

SGX NIFTY : 7827.50 (91.50 Pt Up)

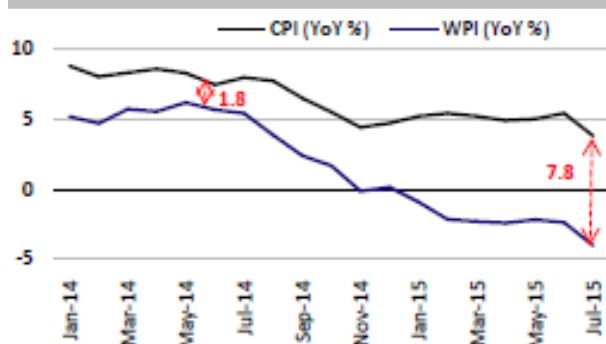
Quote of the Day

"Abnormally good or abnormally bad conditions do not last forever. This is true not only of general business but of particular industries as well. Corrective forces are often set in motion which tend to restore profits where they have disappeared, or to reduce them where they are excessive in relation to capital."

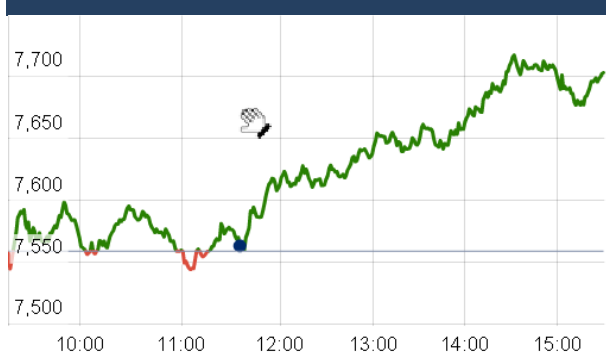
Benjamin Graham

Chart of the Day

CPI & WPI Trend



Index Action Nifty (8th Sept 15)



Index

Contents	Page	Coverage
News	2	Update
Economic Calendar	3	Update

Market

Name	Value	Change
Sensex	25,317.87	424.06
Nifty	7688.25	129.45
DOW	17,545.18	67.78
NASDAQ	4,811.39	128.01
CAC	4,598.26	48.62
DAX	10,271.36	162.67
FTSE	6,146.10	71.58
NIKKEI	18,273.82	846.74
HANG SENG	21,689.97	430.39
EW ALL SHARE	13133.73	(212.76)

Instituional Turnover

FII

Investor	Buy(Cr.)	Sale(Cr.)	Net(Cr.)
08-Sep-15	2970.30	3629.97	(659.67)
Sept,15	56534.73	59974.99	(3440.26)
2015	778026.28	759315.33	18710.95

DII

Investor	Buy(Cr.)	Sale(Cr.)	Net(Cr.)
08-Sep-15	1760.13	1312.72	447.41
Sept,15	23811.41	20932.17	2879.24
2015	300599.65	272017.87	28581.78

Commodity Price

Commodity/Currencies	Value	
GOLD	26406.00	↓
SILVER	35670.00	↑
CRUDEOIL	42.31	↑
COPPER	336.70	↓
NATURALGAS	181.70	↑
DOLLAR/RS.	66.55	↓
EURO/RS.	74.32	↑
POUND/RS.	102.19	↑

Market Snapshot

Top Price Performers

Top Performers 1D	% Change	Top Performers 1W	% Change	Top Performers 1M	% Change
SUJANATOW	19.93	JRG	33.18	ORISSASP	72.54
JRG	19.83	IMPEXFERRO	26.23	JUBLINDS	49.80
ERAINFRA	18.68	ESTER	23.11	DSINVEST	44.74
PRADIP	16.53	AADHAARVEN	20.00	ESTER	43.45
BHAGWATIHO	14.89	PVP	19.68	SHRGLTR	29.13

Worst Price Performers

Worst Performers 1D	% Change	Worst Performers 1W	% Change	Worst Performers 1M	% Change
ENERGYDEV	(20.00)	AMTEKAUTO	(43.37)	AMTEKAUTO	(81.94)
PEERABASAN	(14.40)	DECNGOLD	(36.73)	AHMEDFORGE	(66.58)
GLOBALCA	(13.67)	ENERGYDEV	(24.80)	AMTEKINDIA	(61.97)
SHRIYAMSEC	(11.28)	DSKULKARNI	(24.12)	JMTAUTOLD	(55.78)
KAMATHOTEL	(11.13)	YBRANTDIGI	(22.99)	JYOTISTRUC	(53.72)

Top News

• **City Union Bank Mgt Guideline** : Bank is very optimistic of growth for the bank going forward too . The credit growth for FY16 would be around 12-15 percent although things have to yet improve on the ground. City Union Bank has been a standout performer amongst the banking space. While most banks year to date have given up gains, City Union has lost only one percent.

The net interest income growth rate will also follow credit growth and would be in tune of 15 percent for FY16.

On the non-performing assets (NPA) front although, the stress is reducing but is still higher than previous decade and so, he envisages

• **JSW Energy** acquires 100% of securities of Himachal Baspa Power . Company has concluded the acquisition of 100% of the securities of Himachal Baspa Power Company Ltd. (HBPCL) which has two operating Hydro Power assets - (i) 300 MW Baspa - II HEP and (ii) 1,091 MW Karcham Wangtoo HEP.

• **Hindustan Unilever Ltd (HUL)** has sold the bread and bakery business under 'Modern' brand to Everstone Group's Nimman Foods Pvt Ltd for an undisclosed sum.

• **IVRCL** has cut its employee strength by almost 23 percent in the last fiscal as a cost cutting measure caused by economic slowdown coupled with delays in execution of projects. The company plans to raise Rs 500 crore through the Qualified Institutional Placement (QIP) route during the financial year to meet working capital requirements.

• **Jaiprakash Power Ventures** has concluded the sale of its two hydropower plants to JSW Energy . The two plants include Himachal Baspa Power Company Limited (HBPCL) assets, i) 300 MW Baspa- II HEP, ii) 1,091 MW Karcham Wangtoo HEP. They have been sold at an Enterprise Value (EV) of Rs 9,575 crore.

• **Pfizer** has again rejected the US drug major's new patent application for its rheumatoid arthritis medicine, tofacitinib, citing it did not enhance the efficacy of the existing approved drug.

• **ITC** is looking to set up in three plants -- one each in Punjab, West Bengal and Karnataka -- to cater to its non-cigarettes business . The plants will be built in the cluster format, with focus first being on food and then on personal care . ITC, which is targeting revenue of Rs 1 lakh crore by 2030 from its FMCG business, is looking to increase its in-house manufacturing.

• **National Aluminium Company Ltd (NALCO)** said it will invest Rs 30,000 crore in Odisha, which has unveiled a new industrial policy aimed at attracting investments worth Rs 1,73,000 crore.

• **Eurostat said that GDP** rose to a seasonally adjusted 0.4%, from 0.5% in the preceding quarter whose figure was revised up from 0.3%. Analysts had expected GDP to rise 0.3% in the last quarter.

• **Hungarian Central Statistical Office said that Hungarian CPI** fell to 0.0%, from 0.4% in the preceding quarter. Analysts had expected Hungarian CPI to fall to 0.1% in the last quarter.

• **Germany's Trade Balance** rose to 22.8B, from 22.1B in the preceding month whose figure was revised down from 24.0B. Analysts had expected Germany's Trade Balance to fall to 22.3B last month.

• **Switzerland's unemployment rate** remained unchanged at a seasonally adjusted 3.3%, from 3.3% in the preceding month. Analysts had expected Switzerland's unemployment rate to remain unchanged at 3.3% last month.

• **National Bureau of Statistics of China** said that Chinese Trade Balance rose to 60.24B, from 43.03B in the preceding month. Analysts had expected Chinese Trade Balance to rise to 48.20B last month.

Economic Calendar

Country	Monday 7th Sept 15	Tuesday 8th Sept 15	Wednesday 9th Sept 15	Thursday 10th Sept 15	Friday 11th Sept 15
US	Labor Market Conditions Index m/m .	NFIB Small Business Index ,Consumer Credit m/m .	JOLTS Job Openings ,Crude Oil Inventories , 10-y Bond Auction , Federal Budget Balance , Treasury Currency Report .	Unemployment Claims , Import Prices m/m , Wholesale Inventories m/m , Natural Gas Storage .	PPI m/m , Core PPI m/m , Prelim UoM Consumer Sentiment , Prelim UoM Inflation Expectations , 30-y Bond Auction .
UK/EURO ZONE	Sentix Investor Confidence , German Industrial Production m/m , Construction PMI , BRC Retail Sales Monitor y/y .	Labor Market Conditions Index m/m .	French Gov Budget Balance , French Trade Balance , German 10-y Bond Auction .	French Final Non-Farm Payrolls q/q , French Industrial Production m/m , MPC Official Bank Rate Votes , Official Bank Rate , Asset Purchase Facility , MPC Asset Purchase Facility Votes , MPC Rate Statement .	German Final CPI m/m , Italian Industrial Production m/m , Construction Output m/m , 30-y Bond Auction .
INDIA					

Narnolia Securities Ltd.

Narnolia Research Lab

Stellar IT Park | 5th Floor | Office Space No. 6 | Tower-IIInd Plot No. C-25 | Sector-62 | Noida
| Ph : 0120-4215110

Central Strategy Desk - Kolkata

124 | 1st Floor | 7/1 Lords Sinha Road | Kolkata - 71
Ph : 033-22821500 | M : 93347 14418, 98302 69810