

SGX NIFTY : 8953 (23 Pt Down)

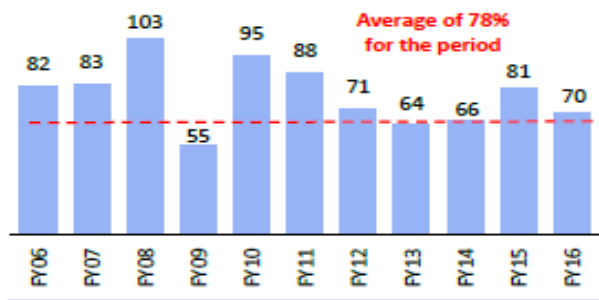
Quote of the Day

"There's a clarity that comes with great ideas: You can explain why something's a great business, how and why it's cheap, why it's cheap for temporary reasons and how, on a normal basis, it should be trading at a much higher level. You're never sitting there on the 40th page of your spreadsheet, as Buffett would say, agonizing over whether you should buy or not."

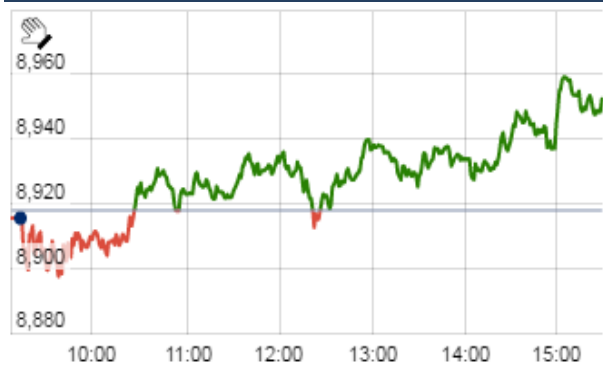
Joel Greenblatt

Chart of the Day

Indian Mkt Cap to GDP (%)



Index Action Nifty (8th Sept 16)



Index

Contents	Page	Coverage
News	2	Update
Economic Calendar	3	Update

Market

Name	Value	Change
Sensex	29,045.28	118.92
Nifty	8952.50	34.55
DOW	18,479.91	(46.23)
NASDAQ	5,259.48	(24.25)
CAC	4,542.20	(15.46)
DAX	10,675.29	(77.69)
FTSE	6,858.78	12.12
NIKKEI	16,943.79	(14.98)
HANG SENG	24,018.63	99.29
EW ALL SHARE	15740.81	55.09

Instituional Turnover

FII

Investor	Buy(Cr.)	Sale(Cr.)	Net(Cr.)
08-Sep-16	4671.07	4559.66	111.41
Sept,16	22752.20	20418.33	2333.87
2016	725989.82	699747.62	26242.20

DII

Investor	Buy(Cr.)	Sale(Cr.)	Net(Cr.)
08-Sep-16	2152.05	2739.48	(587.43)
Sept,16	11746.17	12927.32	(1181.15)
2016	303990.22	304839.26	(849.04)

Commodity Price

Commodity/Currencies	Value	
GOLD	31203.00	↓
SILVER	46714.00	↓
CRUDEOIL	47.42	↑
COPPER	314.00	↑
NATURALGAS	186.10	↑
DOLLAR/RS.	66.41	↑
EURO/RS.	74.89	↓
POUND/RS.	88.46	↓

Market Snapshot

Top Price Performers

Top Performers 1D	% Change	Top Performers 1W	% Change	Top Performers 1M	% Change
HANUNG	19.96	PATELENG	45.12	PRIMEPRO	109.68
ELPROINTL	19.94	ELPROINTL	38.21	PATELENG	107.54
AGCNET	19.92	SUNILHITEC	35.29	NOVAIRNSTL	98.62
EKC	19.91	RBL	34.65	DONEAR	96.34
SHARRESLTD	19.72	MBLINFRA	33.02	BINNY	90.30

Worst Performers 1D	% Change	Worst Performers 1W	% Change	Worst Performers 1M	% Change
GREENLAM	(20.77)	CALSREF	(20.00)	TCI	(46.16)
BIRLACOT	(12.50)	XCHANGING	(16.03)	XCHANGING	(42.70)
CALSREF	(11.11)	SAHARA	(14.02)	WELSPUNIND	(42.11)
PRAKASHSTL	(9.77)	GEINDSYS	(13.86)	GEINDSYS	(41.07)
ORBITCORP	(9.43)	VBCFERROQ	(11.33)	USHERAGRO	(37.90)

Top News

• Mgt Int : TATAMOTORS

It's time NCR diesel issue is put to rest: Tata Motors' Counsel

There is no diesel relief for commercial vehicles in Delhi as the National Green Tribunal (NGT), which is hearing a petition filed by Tata Motors, says the Supreme Court's decision to allow fresh registration of large diesel vehicles doesn't automatically lift the ban on the registration of new commercial vehicles .

• Mgt Int : ASHOKLEY

Ashok Leyland has signed a restructuring agreement with Nissan Motor under which the company is looking to completely take over the 3 joint ventures it currently has with Nissan, said CFO Gopal Mahadevan. The agreement is subject to regulatory approvals . The total investment in the joint ventures was roughly about Rs 500 crore and as a conservative measure Ashok Leyland had booked impairment over the last two financial years. The company will continue to manufacture LCV and small cars that were key products under the JV.

• **HDFC Mgt Guideline** : HDFC said that there is plenty of liquidity. Company has seen it reflected in the cost of borrowing. No question about it. Company has to ensure that incremental funding comes from retail deposits." In periods of tight liquidity, retail deposits is excellent funding . The ability of an RBI to keep lowering interest rates has some limitations . When asked whether there would be pressure on margins in the second half of this fiscal year, Bank maintained that focus for them is on RoE (return on equity). "Higher return on equity comes from sweating the equity. Company is comfortable with spreads which have moved in a narrow band.

• **Reserve Bank** has allowed foreign investors to buy up to 100 percent in Crompton Greaves Consumer Electricals Ltd. Foreign Institutional Investors (FIIs)/Registered Foreign Portfolios Investors (RFPIs) can now invest up to 100 per cent of the paid up capital of Crompton Greaves Consumer Electricals Limited under the Portfolio Investment Scheme (PIS)

• **Indian Oil Corp** plans to start producing gasoline at its Paradip refinery before the year ends following a delay caused by problems at a secondary unit. IOC started up the 300,000 barrels per day (bpd) Paradip refinery in late 2015 and has a continuous catalytic reformer (CCR) which turns naphtha into gasoline.

• **Motherson Sumi Systems Ltd (MSSL)** will be acquiring the automotive business unit of Abraham and Co Ltd in Hungary for about Rs 77 crore. The acquisition is being carried out by MSSL Manufacturing Hungary Kft, an arm of MSSL Gmbh, which again is a subsidiary of MSSL. With this transaction, which is expected to be completed in October 2016, MSSL through its 100 per cent subsidiary...would acquire the land, building, and machinery of Abraham and Co Ltd for a purchase price consideration of EUR 10.4 million

• **Mahindra & Mahindra** , India's top SUV maker, has formed a partnership with ride-sharing firm Ola to spur sales of vehicles and other related services

• **Zensar Technologies** has secured the digital transformation project from Avis Fleet in South Africa. Spread over a time-period of two years, it involves adding scalability and agility to the company's strategic technology roadmap . Zensar will leverage its digital technology skills and expertise to enable Avis Fleet in improving overall customer experience and visible enhancement in the quality of service.

• **U.S. Consumer Credit** rose to a seasonally adjusted 17.71B, from 14.53B in the preceding month whose figure was revised up from 12.32B. Analysts had expected U.S. Consumer Credit to rise 16.00B last month.

• **U.S. Gasoline Inventories** fell to a seasonally adjusted annual rate of -4.211M, from -0.691M in the preceding quarter. Analysts had expected U.S. Gasoline Inventories to fall -0.171M in the last quarter.

• **U.S. Natural Gas Storage** rose to a seasonally adjusted annual rate of 36B, from 51B in the preceding month. Analysts had expected U.S. Natural Gas Storage to rise 43B last month.

• **Mexican CPI** rose to a seasonally adjusted 2.73%, from 2.65% in the preceding month. Analysts had expected Mexican CPI to rise to 2.78% last month.

Result Calendar Q1FY17

BSE Code	Company Name	Result Date	BSE Code	Company Name	Result Date
533278	COALINDIA	09-Sep-16	514354	PREMIERPOL	12-Sep-16
532666	FCSSOFT	09-Sep-16	532939	RPOWER	12-Sep-16
532702	GSPL	09-Sep-16	526725	SANDESH	12-Sep-16
539336	GUJGAS	09-Sep-16	532886	SELMCL	12-Sep-16
513691	JMTAUTOLD	09-Sep-16	532348	SUBEX	12-Sep-16
532532	JPASSOCIAT	09-Sep-16	500470	TATASTEEL	12-Sep-16
532997	KSK	09-Sep-16	520077	AMTEKAUTO	13-Sep-16
532778	LITL	09-Sep-16	532141	ANDHRACEMT	13-Sep-16
513269	MANINDS	09-Sep-16	532870	ANKITMETAL	13-Sep-16
532234	NATIONALUM	09-Sep-16	530245	ARYAMAN	13-Sep-16
505509	RESPONIND	09-Sep-16	531847	ASTAR	13-Sep-16
533206	SJVN	09-Sep-16	539946	BAZELINTER	13-Sep-16
532784	SOBHA	09-Sep-16	539290	BINDALAGRO	13-Sep-16
504960	STEWARTQ	09-Sep-16	532678	BRFL	13-Sep-16
522113	TIMKEN	09-Sep-16	523618	DREDGECORP	13-Sep-16
532966	TWL	09-Sep-16	531615	ERABUILD	13-Sep-16
533156	VASONEQ	09-Sep-16	530323	ERAINFRA	13-Sep-16
532794	ZEEMEDIA	09-Sep-16	523574	FEL	13-Sep-16
534742	ZUARI	09-Sep-16	500163	GODFRYPHLP	13-Sep-16
500780	ZUARIGLOB	09-Sep-16	532734	GPIL	13-Sep-16
502355	BALKRISIND	10-Sep-16	500160	GTL	13-Sep-16
500055	BHUSANSTL	10-Sep-16	532775	GTLINFRA	13-Sep-16
532282	CASTEXTECH	10-Sep-16	532799	HUBTOWN	13-Sep-16
532873	HDIL	10-Sep-16	533177	IL&FSTRANS	13-Sep-16
533207	JPINFRATEC	10-Sep-16	532940	JKIL	13-Sep-16
531687	KGL	10-Sep-16	532629	MBECL	13-Sep-16
531497	MADHUCON	10-Sep-16	532650	MSPL	13-Sep-16
532780	PARSVNATH	10-Sep-16	500108	MTNL	13-Sep-16
533107	RDEL	10-Sep-16	500317	OSWALAGRO	13-Sep-16
503811	SIYSIL	10-Sep-16	539351	PRABHAT	13-Sep-16
507892	WINSOMEDJ	10-Sep-16	531746	PRAENG	13-Sep-16
521070	ALOKTEXT	12-Sep-16	533262	RAMKY	13-Sep-16
500032	BAJAJHIND	12-Sep-16	500390	RELINFRA	13-Sep-16
532930	BGREENERGY	12-Sep-16	500368	RUCHISOYA	13-Sep-16
501833	CHOWGULSTM	12-Sep-16	511672	SCANSTL	13-Sep-16
511716	ESCORTSFIN	12-Sep-16	533206	SJVN	13-Sep-16
509550	GAMMONIND	12-Sep-16	508998	STEERINTER	13-Sep-16
532715	GITANJALI	12-Sep-16	532667	SUZLON	13-Sep-16
506186	GLXYENT	12-Sep-16	532721	VISASTEEL	13-Sep-16
517271	HBLPOWER	12-Sep-16	533292	A2ZINFRA	14-Sep-16
515145	HINDNATGLS	12-Sep-16	534064	AIML	14-Sep-16
532368	LYCOS	12-Sep-16	515055	ANANTRAJ	14-Sep-16
523872	MAGNA	12-Sep-16	518091	APCL	14-Sep-16
533152	MBLINFRA	12-Sep-16	523716	ASHIANA	14-Sep-16
513335	METALFORGE	12-Sep-16	500048	BEML	14-Sep-16
513683	NLCINDIA	12-Sep-16	526853	BI	14-Sep-16
532880	OMAXE	12-Sep-16	533276	BSLIMITED	14-Sep-16

500084	CESC	14-Sep-16	519506	NCCBLUE	14-Sep-16
533160	DBREALTY	14-Sep-16	533008	OISL	14-Sep-16
532696	EDUCOMP	14-Sep-16	590086	ORISSAMINE	14-Sep-16
533296	FMNL	14-Sep-16	531120	PATELENG	14-Sep-16
526367	GANESHHOUC	14-Sep-16	532355	PICTUREHS	14-Sep-16
532754	GMRINFRA	14-Sep-16	533274	PRESTIGE	14-Sep-16
509627	HINDDORROL	14-Sep-16	517556	PVP	14-Sep-16
530773	IVRCLINFRA	14-Sep-16	532712	RCOM	14-Sep-16
511034	JINDRILL	14-Sep-16	532766	RICHAIND	14-Sep-16
530299	KOTHARIPRO	14-Sep-16	500366	ROLTA	14-Sep-16
532899	KSCL	14-Sep-16	533569	SRLTD	14-Sep-16
531882	KWALITY	14-Sep-16	520155	STARLOG	14-Sep-16
500265	MAHSEAMLES	14-Sep-16	512299	STERLINBIO	14-Sep-16
533204	MANDHANA	14-Sep-16	526365	SWARN SAR	14-Sep-16
503101	MARATHON	14-Sep-16	590081	BRAHMANAN	15-Sep-16
513377	MMTC	14-Sep-16	523754	EPCIN	27-Oct-16
513446	MONNETISPA	14-Sep-16	532313	MAHLIFE	27-Oct-16
534309	NBCC	14-Sep-16	524038	VENLONENT	28-Oct-16

Economic Calendar					
Country	Monday 5th Sept 16	Tuesday 6th Sept 16	Wednesday 7th Sept 16	Thursday 8th Sept 16	Friday 9th Sept 16
US		Final Services PMI , ISM Non-Manufacturing PMI , IBD/TIPP Economic Optimism , Labor Market Conditions Index m/m.	JOLTS Job Openings , RBA Deputy Gov Lowe Speaks .	Unemployment Claims , Natural Gas Storage , Crude Oil Inventories , Consumer Credit m/m .	FOMC Member Rosengren Speaks , Wholesale Inventories m/m .
UK/EURO ZONE	Spanish Services PMI , Italian Services PMI , Services PMI , Retail Sales m/m.	German Factory Orders m/m , Retail PMI .	German Industrial Production m/m , French Trade Balance , Manufacturing Production m/m , MPC Member Cunliffe Speaks , Inflation Report Hearings.	Minimum Bid Rate , French Final Non-Farm Payrolls q/q , ECB Press Conference.	German Trade Balance , Goods Trade Balance , Consumer Inflation Expectations , Eurogroup Meetings.
INDIA					



(Regn. No. : INP 00004011)

Narnolia Securities Ltd.

Narnolia Research Lab

Stellar IT Park | 5th Floor | Office Space No. 6 | Tower-IIInd Plot
No. C-25 | Sector-62 | Noida | Ph : 0120-4215110

Narnolia Securities Ltd.

201 | 2nd Floor | Marble Arch Building | 236B-AJC Bose Road Kolkata-
700 020 Ph : 033-40501500
Email : narnolia@narnolia.com website : www.narnolia.com