

SGX NIFTY : 8228 (60 Pt Up)

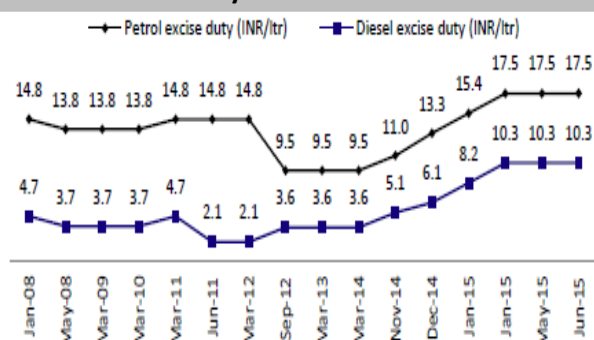
Quote of the Day

"Surprise and shock are endemic to the system, and people should always arrange their affairs so that they will survive such events. They will end up richer that way than focusing all the time on getting rich."

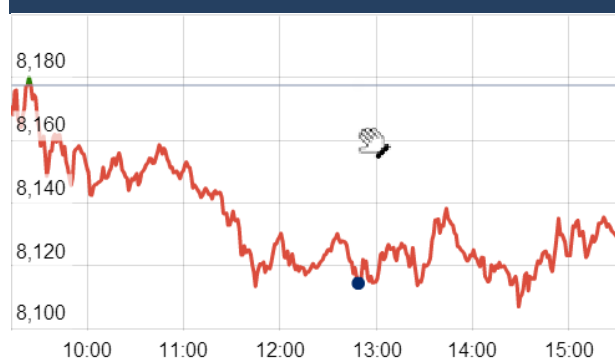
Peter Bernstein

Chart of the Day

Excise duty of Petroleum Product



Index Action Nifty (8th Oct 15)



Index

Contents	Page	Coverage
News	2	Update
Economic Calendar	3	Update

Market

Name	Value	Change
Sensex	26,845.81	(190.04)
Nifty	8129.35	(48.05)
DOW	17,050.75	138.85
NASDAQ	4,810.79	16.64
CAC	4,675.19	8.57
DAX	9,993.07	22.67
FTSE	6,374.82	38.47
NIKKIE	18,293.83	152.66
HANG SENG	22,762.93	408.07
EW ALL SHARE	14080.69	(67.58)

Instituional Turnover

FII

Investor	Buy(Cr.)	Sale(Cr.)	Net(Cr.)
08-Oct-15	4092.94	4141.83	(48.89)
Oct,15	61118.23	66899.09	(5780.86)
2015	731910.54	766239.43	16370.35

DII

Investor	Buy(Cr.)	Sale(Cr.)	Net(Cr.)
08-Oct-15	1382.71	1682.46	(299.75)
Oct,15	2526.75	2693.65	4403.34
2015	303628.11	273522.23	30105.88

Commodity Price

Commodity/Currencies	Value	
GOLD	26453.00	↓
SILVER	36875.00	↓
CRUDEOIL	53.27	↑
COPPER	340.10	↓
NATURALGAS	163.10	↓
DOLLAR/RS.	65.05	↑
EURO/RS.	73.09	↑
POUND/RS.	99.89	↑

Market Snapshot

Top Price Performers

Top Performers 1D	% Change	Top Performers 1W	% Change	Top Performers 1M	% Change
GENESYS	20.00	DWARKESH	61.91	KSOILS	166.67
HEG	19.99	HCL-INSYS	56.97	FARMAXIND	154.55
NDTV	18.49	RENUKA	52.15	ERAINFRA	122.63
EMPEESUG	17.58	SRSLTD	50.82	LITL	97.79
INDSWFTLAB	16.91	IMPEXFERO	43.78	ANDHRACEMT	89.17

Worst Price Performers

Worst Performers 1D	% Change	Worst Performers 1W	% Change	Worst Performers 1M	% Change
TUNITEX	(11.76)	TUNITEX	(30.23)	AEGISCHEM	(88.35)
BAGFILMS	(9.86)	KGNENT	(21.88)	AMTEKINDIA	(61.54)
SANDUMA	(8.86)	ADINATHBI	(20.00)	GOKUL	(33.04)
ZYLOG	(8.35)	VTCIND	(18.25)	HELIOSMATH	(31.07)
MLKFOOD	(8.17)	CANDC	(17.55)	ROLATAN	(30.44)

Top News

- **Shilpi Cable** has entered into a joint venture with Eyecom Telecommunications Equipments, headquartered in New Zealand, one of leading RF path technology solution providers globally . The company planned to foray in next generation technology of radio frequency (RF) by introducing base station antenna (BSA) products for 2G/3G/4G through this joint venture.

- **Crompton Greaves** said it will sell its stake in CG Lucy Switchgear Ltd to its UK-based joint venture partner for over Rs 42 crore. Company's Board of Directors have approved divestment of its 6,00,000 shares of Rs 10 each made in 1994 (aggregating to Rs 6 million) in the share capital of CG Lucy Switchgear Ltd to W Lucy & Co Ltd, UK for consideration of 5.5 million euro (Rs 402.60 million) and the execution of consequent definitive agreements.

- **Mahindra and Mahindra** has been assigned 'Baa3' rating with a stable outlook by foreign rating agency Moody's. M&M says the rating signifies the company's leadership position. On the company's future plans, Parthasarathy says he plans to have a capital expansion of Rs 7,500 crore for the next three years, apart from investments to the tune of Rs 2,500 crore.

- **Tech Mahindra** has signed a Memorandum of Understanding (MoU) with Transport Systems Catapult (TSC) to develop intelligent mobility solutions that address the growing capacity, operational efficiency and interoperability challenges faced by the UK supply chain and freight and logistic industries

- **Pratibha Industries** has won Rs 1,000 crore water supply contract in Telangana. The company has bagged an order worth Rs 376 crore from Telangana Government for providing drinking water to Sangareddy segment from Singur source in Medak district.

- **Reliance Communications (RCom)** has completed the due diligence for its merger with Russia's Sistema Shyam Teleservices . The two companies are going to meet early next month to finalise the merger and the swap ratio. RCom's board, and the MTS management will be overhauled post their merger.

- **Cipla** said its subsidiary has inked a pact with Serum Institute of India (SII) to supply vaccines in South Africa. Cipla Medpro (Pty), the company's South African arm has entered into an exclusive agreement with world's largest vaccine manufacturer SII to supply vaccines . The partnership will not only enable affordable and accessible vaccines for South Africans, but will also facilitate a reliable supply stream to the South African government .

- **TBZ** has tied up with Snapdeal to offer consumers diamond jewellery (rings, earrings, pendants, bracelets) and gold coins on online marketplace,

- **Rajesh Exports** has bagged an export order worth Rs 1360 crore of designer range of gold and diamond studded jewellery and medallions from UAE. The order will be executed at the company's manufacturing facility at Bangalore and it will significantly add to the bottom line of the company.

- **U.S. Natural Gas Storage** rose to a seasonally adjusted annual rate of 95B, from 98B in the preceding month. Analysts had expected U.S. Natural Gas Storage to rise 98B last month.

- **Mexican CPI** fell to a seasonally adjusted 2.52%, from 2.59% in the preceding month. Analysts had expected Mexican CPI to fall to 2.57% last month.

- **U.S. Department of Labor said the number of individuals** filing for initial jobless benefits last week fell to a seasonally adjusted 263K, from 276K in the preceding week whose figure was revised down from 277K.

- **Switzerland's unemployment rate** rose to a seasonally adjusted 3.4%, from 3.3% in the preceding month. Analysts had expected Switzerland's unemployment rate to rise to 3.4% last month.

Result Calendar Q2FY16

BSE Code	Company Name	Date	BSE Code	Company Name	Date
533229	BAJAJCORP	07-Oct-15	513010	TATASPONGE	16-Oct-15
512161	8KMILES	08-Oct-15	532218	SOUTHBANK	17-Oct-15
539149	ICSL	09-Oct-15	532262	TCIIND	17-Oct-15
532187	INDUSINDBK	09-Oct-15	506690	UNICHEMLAB	17-Oct-15
533402	INNOIND	09-Oct-15	511288	GRUH	19-Oct-15
530173	OSCARGLO	09-Oct-15	532281	HCLTECH	19-Oct-15
532981	ANULABS	10-Oct-15	519552	HERITGFOOD	19-Oct-15
533569	SRSLTD	10-Oct-15	502937	KESORAMIND	19-Oct-15
526638	TEXELIN	10-Oct-15	521248	KITEX	19-Oct-15
531247	ALPHA	12-Oct-15	500266	MAHSCOOTER	19-Oct-15
500209	INFY	12-Oct-15	532522	PETRONET	19-Oct-15
524622	ISTRNETWK	12-Oct-15	532987	RBL	19-Oct-15
523445	RIIL	12-Oct-15	533228	SKSMICRO	19-Oct-15
524661	WELCURE	12-Oct-15	513517	STEELCAS	19-Oct-15
532772	DCBBANK	13-Oct-15	533158	THANGAMAYL	19-Oct-15
538708	ETIL	13-Oct-15	504966	TINPLATE	19-Oct-15
507753	SREERAYA	13-Oct-15	500410	ACC	20-Oct-15
532540	TCS	13-Oct-15	532978	BAJAJFINSV	20-Oct-15
531894	VATSAMUS	13-Oct-15	500034	BAJFINANCE	20-Oct-15
500089	DICIND	14-Oct-15	532523	BIOCON	20-Oct-15
509567	GOACARBON	14-Oct-15	511196	CANFINHOME	20-Oct-15
500189	HINDUJAVEN	14-Oct-15	508906	EVERESTIND	20-Oct-15
500696	HINDUNILVR	14-Oct-15	507488	GMBREW	20-Oct-15
532798	NETWORK18	14-Oct-15	533047	IMFA	20-Oct-15
507649	RASOI	14-Oct-15	502330	IPAPPM	20-Oct-15
517506	TTKPRESTIG	14-Oct-15	532926	JYOTHYLAB	20-Oct-15
532800	TV18BRDCST	14-Oct-15	500233	KAJARIACER	20-Oct-15
505537	ZEEL	14-Oct-15	526299	MPHASIS	20-Oct-15
526433	ASMTEC	15-Oct-15	539015	ORTEL	20-Oct-15
532175	CYIENT	15-Oct-15	532661	RML	20-Oct-15
533151	DBCORP	15-Oct-15	532977	BAJAJ-AUTO	21-Oct-15
590003	KARURVYSYA	15-Oct-15	500490	BAJAJHLDNG	21-Oct-15
534690	LAKSHVILAS	15-Oct-15	500180	HDFCBANK	21-Oct-15
500253	LICHSGFIN	15-Oct-15	500228	JSWSTEEL	21-Oct-15
532819	MINDTREE	15-Oct-15	532720	M&MFIN	21-Oct-15
502742	SINTEX	15-Oct-15	532756	MAHINDCIE	21-Oct-15
513434	TATAMETALI	15-Oct-15	514142	TTL	21-Oct-15
532953	VGUARD	15-Oct-15	507685	WIPRO	21-Oct-15
506597	AMAL	16-Oct-15	532321	CADILAHC	22-Oct-15
526847	ASHSI	16-Oct-15	532628	3IINFOTECH	23-Oct-15
500215	ATFL	16-Oct-15	520119	ASAL	23-Oct-15
501833	CHOWGULSTM	16-Oct-15	500820	ASIANPAINT	23-Oct-15
505737	INTLCOMBQ	16-Oct-15	511243	CHOLAFIN	23-Oct-15
517447	RSSOFTWARE	16-Oct-15	513262	SSWL	23-Oct-15
539353	SWARAJAUTO	16-Oct-15	532424	GODREJCP	24-Oct-15
500407	SWARAJENG	16-Oct-15	533179	PERSISTENT	25-Oct-15

532888	ASIANILES	26-Oct-15	501110	SUNRINV	30-Oct-15
500067	BLUESTARCO	26-Oct-15	500114	TITAN	30-Oct-15
500010	HDFC	26-Oct-15	526125	ARHNTTO	31-Oct-15
532988	RANEENGINE	26-Oct-15	500660	GLAXO	31-Oct-15
538268	WONDERLA	26-Oct-15	532659	IDFC	31-Oct-15
532215	AXISBANK	27-Oct-15	532644	JKCEMENT	31-Oct-15
503960	BBL	27-Oct-15	531221	MAYURFL	31-Oct-15
531530	BETALA	27-Oct-15	526935	MBPARIKH	31-Oct-15
506395	COROMANDEL	27-Oct-15	526891	MKTCREAT	31-Oct-15
511676	GICHSGFIN	27-Oct-15	521234	SRINACHA	31-Oct-15
532504	NAVINFLUOR	27-Oct-15	506655	SUDARSCEM	31-Oct-15
531209	NUCLEUS	27-Oct-15	524038	VENLONENT	31-Oct-15
523642	PIIND	27-Oct-15	506590	PHILIPCARB	02-Nov-15
500008	AMARAJABAT	28-Oct-15	500403	SUNDRMFAST	02-Nov-15
500425	AMBUJACEM	28-Oct-15	507747	TTKHEALTH	02-Nov-15
500096	DABUR	28-Oct-15	523411	ADCINDIA	03-Nov-15
531600	GOGIACAP	28-Oct-15	509480	BERGEPAIN	03-Nov-15
532662	HTMEDIA	28-Oct-15	500338	PRISMCEM	03-Nov-15
533293	KIRLOSENG	28-Oct-15	532755	TECHM	03-Nov-15
500264	MAFATIND	28-Oct-15	500414	TIMEX	03-Nov-15
502180	SHREDIGCEM	28-Oct-15	532548	CENTURYPLY	04-Nov-15
532498	SHRIRAMCIT	28-Oct-15	509162	INDAG	04-Nov-15
500830	COLPAL	29-Oct-15	532156	VAIBHAVGBL	04-Nov-15
500124	DRREDDY	29-Oct-15	519606	INTEGFD	05-Nov-15
517449	MAGNAELQ	29-Oct-15	531213	MANAPPURAM	05-Nov-15
500452	NEPCAGRO	29-Oct-15	532097	MUKANDENGG	05-Nov-15
500301	NEPCMICON	29-Oct-15	520151	SHREYAS	05-Nov-15
531077	NEPCPAPER	29-Oct-15	500470	TATASTEEL	05-Nov-15
521192	NEPCTEX	29-Oct-15	523736	DPL	06-Nov-15
500790	NESTLEIND	29-Oct-15	500164	GODREJIND	06-Nov-15
500313	OILCOUNTUB	29-Oct-15	500520	M&M	06-Nov-15
509930	SUPREMEIND	29-Oct-15	532777	NAUKRI	06-Nov-15
500420	TORNTPHARM	29-Oct-15	500260	RAMCOCEM	06-Nov-15
500027	ATUL	30-Oct-15	507966	RASRESOR	06-Nov-15
500049	BEL	30-Oct-15	532133	IFGLREFRAC	07-Nov-15
500147	CMIFPE	30-Oct-15	520113	VESUVIUS	07-Nov-15
523754	EPCIN	30-Oct-15	523248	MACPLASQ	08-Nov-15
500247	KOTAKBANK	30-Oct-15	505800	RANEHOLDIN	09-Nov-15
532652	KTKBANK	30-Oct-15	522113	TIMKEN	09-Nov-15
532313	MAHLIFE	30-Oct-15	530897	NGIND	13-Nov-15
531049	NEELKAN	30-Oct-15	526947	LAOPALA	14-Nov-15
500730	NOCIL	30-Oct-15	500387	SHREECEM	14-Nov-15
502420	ORIENTPPR	30-Oct-15	511626	RRFIN	14-Dec-15
517168	SUBROS	30-Oct-15			

Economic Calendar

Country	Monday 5th Oct 15	Tuesday 6th Oct 15	Wednesday 7th Oct 15	Thursday 8th Oct 15	Friday 9th Oct 15
US	Final Services PMI , ISM Non-Manufacturing PMI , Labor Market Conditions Index m/m .	Trade Balance , IBD/TIPP Economic Optimism , RICS House Price Balance , BRC Shop Price Index y/y .	Crude Oil Inventories , Consumer Credit m/m .	Unemployment Claims , Natural Gas Storage , 10-y Bond Auction , FOMC Meeting Minutes .	Import Prices m/m , Wholesale Inventories m/m , Federal Budget Balance .
UK/EURO ZONE	Services PMI , Retail Sales m/m , Sentix Investor Confidence , French Final Services PMI ,	German Factory Orders m/m , Trade Balance , Housing Equity Withdrawal q/q ,	Trade Balance , IBD/TIPP Economic Optimism , RICS House Price Balance , BRC Shop Price Index y/y .	MPC Official Bank Rate Votes , Official Bank Rate , Asset Purchase Facility , MPC Asset Purchase Facility Votes , MPC Rate Statement , Monetary Policy Summary .	French Industrial Production m/m , Italian Industrial Production m/m , Construction Output m/m , Employment Change , Unemployment Rate .
INDIA	HSBC India Services PMI				



(Regn. No. : INP 000004011)

Narnolia Securities Ltd.

Narnolia Research Lab

Stellar IT Park | 5th Floor | Office Space No. 6 | Tower-IInd Plot No. C-25 | Sector-62 | Noida
| Ph : 0120-4215110

Central Strategy Desk - Kolkata

124 | 1st Floor | 7/1 Lords Sinha Road | Kolkata - 71
Ph : 033-22821500 | M : 93347 14418, 98302 69810