

SGX NIFTY : 8818.50 (9.5 Pt Up)

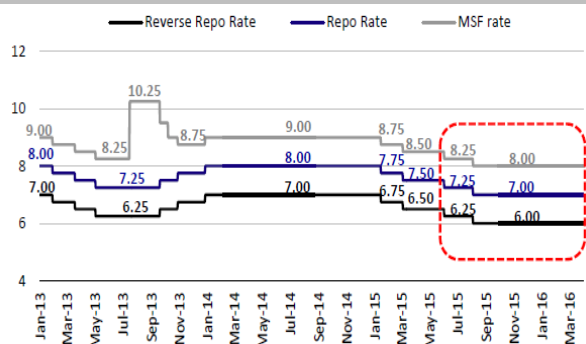
Quote of the Day

"I think it is undeniably true that the human brain must work in models. The trick is to have your brain work better than the other person's brain because it understands the most fundamental models- ones that will do most work per unit."

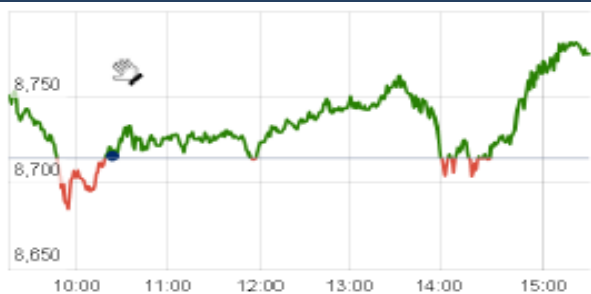
Charlie Munger

Chart of the Day

RBI Rate Policy



Index Action Nifty (9th Mar 15)



Index

Contents	Page	Coverage
News	2	Update
Economic Calendar	3	Update

Market

Name	Value	Change
Sensex	28,885.21	177.46
Nifty	8778.3	63.90
DOW	17,958.73	56.22
NASDAQ	4,974.56	23.74
CAC	5,208.95	72.09
DAX	12,166.44	130.58
FTSE	7,015.36	77.95
NIKKEI	19,926.37	(11.35)
HANG SENG	27,295.31	350.92
EW ALL SHARE	15006.08	58.84

Instituional Turnover

FII

Investor	Buy(Cr.)	Sale(Cr.)	Net(Cr.)
9th Apr,15	5589.40	5395.59	193.81
Apr,15	22210.77	21205.48	1005.29
2015	339218.20	314280.30	24937.90

DII

Investor	Buy(Cr.)	Sale(Cr.)	Net(Cr.)
9th Apr ,15	2166.98	1674.19	492.79
Apr,15	8571.36	7994.87	576.49
2015	123547.68	128945.88	(5398.20)

Commodity Price

Commodity/Currencies	Value	
GOLD	26524.00	↓
SILVER	36289.00	↓
CRUDEOIL	50.69	↑
COPPER	376.10	↓
NATURALGAS	158.70	↓
DOLLAR/RS.	62.24	↑
EURO/RS.	66.45	↑
POUND/RS.	91.65	↑

Market Snapshot

Top Price Performers

Top Performers 1D	% Change	Top Performers 1W	% Change	Top Performers 1M	% Change
TANTIACONS	20.00	ESSDEE	91.54	KIRIINDUS	73.51
EON	20.00	AANJANEYA	70.50	ZENOTECH	59.78
PIRLIFE	19.98	HCIL	60.33	PUNJABCHEM	59.15
PLETHICO	19.97	VISASTEEL	58.08	WANBURY	58.60
NUCLEUS	19.96	PLETHICO	58.03	KITEX	57.18

Worst Price Performers

Worst Performers 1D	% Change	Worst Performers 1W	% Change	Worst Performers 1M	% Change
ONELIFECAP	(18.55)	PRITI	(41.29)	PRITI	(49.80)
LPDC	(17.63)	KGNENT	(17.47)	KGNENT	(44.74)
KSERASERA	(13.04)	STEERINTER	(14.23)	GLODYNE	(41.91)
INFODRIVE	(10.34)	PANCHMSTEL	(13.44)	CURATECH	(35.31)
INNOIND	(9.05)	STRAUSIND	(12.82)	DSINVEST	(31.00)

Top News

- **Cipla Ltd** has informed that Cipla (EU) Limited, U.K., a wholly owned subsidiary of the Company, has entered into a definitive agreement for acquisition of 100% stake in Duomed Produtos Farmaceuticos Ltda. ("Duomed"), a limited liability Company in Brazil for a cash consideration of Brazilian Real (R\$) 1,293,600 (approx. INR 2.6 crores). Duomed was incorporated on June 10, 2013. It has in place approval of ANVISA (Brazilian health authority) and other regulatory authorities to import and distribute pharmaceutical products in Brazil. The acquisition is part of Company's front-end strategy and will expedite its product registrations in Brazil.

- **Kwality Mgt Guideline** : Company started procuring from milk collection centres (MCC) models from 2012 so in three and a half, five years that Company have worked and collected milk from farmers Company have already transferred to our chilling centres. Total capex for next two and a half years is almost Rs 300 crore. Debt would be around Rs 200 crore. EBITDA level is around six percent. Company is targeting 25 percent of revenues in a few years to come from value-added products .

- **Skipper** has received an export order worth Rs 400 crore from Colombian market for supply of transmission towers . It is a supplier and manufacturer of PVC, GI, SWR steel & plastic plumbing pipes, fitting, high mast poles, tower & scaffolding in Kolkata, India.

- **Aurobindo Pharma** has received USFDA Approval for Atracurium Besylate Injections. The approved ANDAs are bioequivalent and therapeutically equivalent to the reference listed drug product (RLD) Atracurium Besylate Injections USP of Eurohealth International Sarl.

- **Std : BAJAJCORP Q4FY15** : SALES YOY 28% PAT YOY 41.58%, (SALES 236.17 Cr (Q4FY15), Vs 184.51Cr (Q4FY14)(PAT 54.24 Cr (Q4FY15) , Vs 38.31Cr (Q4FY14). No Final Dividend has been recommended by the Board of Directors for the year ended March 31, 2015.

- Global rating agencies **Moody's and Fitch** have affirmed India's sovereign rating 'Baa3' and 'BBB-' respectively. However, Moody's has revised the outlook to 'positive' from 'stable' while Fitch has kept the outlook 'stable' unchanged.

- **Biocon** Strengthens its Presence in Mexico; Receives Approval for Insulin Glargine through its partner PiSA Farmaceutica .

- **Kalpataru Power Transmission** has commenced commercial operations of its second transmission line BOOT project. The transmission line project has been setup for evacuation of 2X250 MW state power project at Satpura in the state of Madhya Pradesh. The project scope involves design, financing, construction and commissioning and operation and maintenance of 240 kms of 400 KV transmission line.

- **German Industrial Production** rose to a seasonally adjusted annual rate of 0.2%, from -0.4% in the preceding month whose figure was revised down from 0.6%. Analysts had expected German Industrial Production to rise 0.2% last month.

- **Statistics Canada** said that Canada's New House Price Index rose to 0.2%, from -0.1% in the preceding week. Analysts had expected Canada's New House Price Index to rise 0.1% last week.

- **U.S. Department of Labor** said the number of individuals filing for initial jobless benefits last week rose to a seasonally adjusted 281K, from 267K in the preceding week whose figure was revised down from 268K. Analysts had expected initial jobless claims to rise to 285K last week.

- **Germany's Trade Balance** rose to 19.7B, from 19.6B in the preceding month whose figure was revised down from 19.7B. Analysts had expected Germany's Trade Balance to rise to 20.1B last month.

Result Calendar Q4FY15

BSE CODE	Company Name	Date	BSE CODE	Company Name	Date
512455	LLOYDSME	10-Apr-15	500472	SKFINDIA	23-Apr-15
516020	AGIOPAPER-\$	11-Apr-15	506597	AMAL	24-Apr-15
509162	INDAG	11-Apr-15	511243	CHOLAFIN	24-Apr-15
532900	SEINV	11-Apr-15	530055	HRMNYCP	24-Apr-15
505230	CIMMCO	13-Apr-15	500209	INFY	24-Apr-15
532966	TWL	13-Apr-15	513262	SSWL	24-Apr-15
512161	8KMILES	14-Apr-15	531221	MAYURFL	26-Apr-15
500410	ACC	14-Apr-15	532482	GRANULES	27-Apr-15
531082	ALANKIT	14-Apr-15	532174	ICICIBANK	27-Apr-15
532772	DCBBANK	14-Apr-15	532424	GODREJCP	28-Apr-15
532106	REIAGROLTD	14-Apr-15	532504	NAVINFLUOR	28-Apr-15
523229	BHARATSE-\$	15-Apr-15	500408	TATAELXI	28-Apr-15
507960	GUJHOTE	15-Apr-15	532523	BIOCON	29-Apr-15
509069	INFOMEDIA	15-Apr-15	500010	HDFC	29-Apr-15
500213	ITHL-\$	15-Apr-15	500387	SHRECEM	29-Apr-15
532798	NETWORK18	15-Apr-15	505827	SNL	29-Apr-15
523445	RIIL	15-Apr-15	500027	ATUL	30-Apr-15
532800	TV18BRDCST	15-Apr-15	532215	AXISBANK	30-Apr-15
511288	GRUH	16-Apr-15	500085	CHAMBLFERT	30-Apr-15
532187	INDUSINDBK	16-Apr-15	506395	COROMANDEL	30-Apr-15
520066	JAYBARMARU	16-Apr-15	532659	IDFC	30-Apr-15
532819	MINDTREE	16-Apr-15	532313	MAHLIFE	30-Apr-15
512205	VATSAEDU	16-Apr-15	530243	MANGASOF	30-Apr-15
526187	ASHRAM	17-Apr-15	500730	NOCIL	30-Apr-15
500215	ATFL	17-Apr-15	500313	OILCOUNTUB	30-Apr-15
500092	CRISIL	17-Apr-15	513375	CARBORUNIV	1-May-15
532099	DATABASE	17-Apr-15	533088	MHRIL	1-May-15
530139	KREONFIN	17-Apr-15	532953	VGUARD	4-May-15
530173	OSCARGLO	17-Apr-15	500096	DABUR	5-May-15
517447	RSSOFTWARE	17-Apr-15	511676	GICHSGFIN	6-May-15
521228	TATIAGLOB	17-Apr-15	521234	SRINACHA-\$	6-May-15
531846	TRINITYLEA	17-Apr-15	520113	VESUVIUS	7-May-15
500253	LICHSGFIN	18-Apr-15	507815	GILLETTE	8-May-15
511371	VATCO	18-Apr-15	500165	KANSAINER	8-May-15
533179	PERSISTENT	20-Apr-15	500459	PGHH	8-May-15
513010	TATASPONGE	20-Apr-15	532756	MAHINDCIE	11-May-15
526921	21STCENMGM	21-Apr-15	534804	CARERATING	12-May-15
500089	DICIND	21-Apr-15	500124	DRREDDY	12-May-15
532281	HCLTECH	21-Apr-15	523736	DPL	14-May-15
504961	TATAYODOGA-\$	21-Apr-15	506767	ALKYLAMINE	15-May-15
509966	VSTIND	21-Apr-15	500420	TORNTPHARM	15-May-15
505412	WENDT	21-Apr-15	534742	ZUARI	15-May-15
507685	WIPRO	21-Apr-15	500780	ZUARIGLOB	15-May-15
520119	ASAL	22-Apr-15	532133	IFGLREFRAC	16-May-15
517320	SAVINFOCO	22-Apr-15	532978	BAJAJFINSV	20-May-15
532792	CAIRN	23-Apr-15	500034	BAJFINANCE	20-May-15
500180	HDFCBANK	23-Apr-15	532977	BAJAJ-AUTO	21-May-15
502330	IPAPPM	23-Apr-15	500490	BAJAJHLDNG	21-May-15
532720	M&MFIN	23-Apr-15	500414	TIMEX-\$	21-May-15
500290	MRF	23-Apr-15	531319	MARUTISE	25-May-15

500133	ESABINDIA	26-May-15	532777	NAUKRI	29-May-15
512618	RLF	26-May-15	535514	PRIMECAPM	29-May-15
500164	GODREJIND	27-May-15	532915	RELIGARE	29-May-15
512153	SPECMKT	27-May-15	508963	STRLGUA	29-May-15
500008	AMARAJABAT	28-May-15	506655	SUDARSCHM	29-May-15
508939	BLCISER	28-May-15	511690	WARNER	29-May-15
530779	DYNAMICP	28-May-15	512587	ZODJRD MJ	29-May-15
500202	INDLEASE	29-May-15	526891	MKTCREAT	30-May-15
500520	M&M	29-May-15	524703	SANDUPHQ	30-May-15
501343	MOTOGENFIN	29-May-15	511626	RRFIN	14-Dec-15

Country	Monday 6 April 15	Tuesday 7 April 15	Wednesday 8 April 15	Thursday 9 April 15	Friday 10 April 15
US	Labor Market Conditions Index m/m .	Construction PMI , JOLTS Job Openings .	Crude Oil Inventories ,10-y Bond Auction , FOMC Meeting Minutes .	Unemployment Claims , Wholesale Inventories m/m , Natural Gas Storage , Federal Budget Balance .	Import Prices m/m , Prelim UoM Consumer Sentiment , Prelim UoM Inflation Expectations , 30-y Bond Auction .
UK/EURO ZONE	Spanish Unemployment Change, Sentix Investor Confidence.	French Gov Budget Balance , French Trade Balance , IBD/TIPP Economic Optimism , Consumer Credit m/m .	German Factory Orders m/m ,BOE Credit Conditions Survey , Retail Sales m/m .	Trade Balance , Official Bank Rate , Asset Purchase Facility , MPC Rate Statement ,	French Industrial Production m/m ,French CPI m/m , Manufacturing Production m/m , Construction Output m/m .
INDIA	HSBC service PMI no	RBI Crdit Policy			IIP Data

Risk Disclosure & Disclaimer : This report/message is for the personal information of the authorized recipient and does not construe to be any investment, legal or taxation advice to you. Narnolia Securities Ltd. (Hereinafter referred as NSL) is not soliciting any action based upon it. This report/message is not for public distribution and has been furnished to you solely for your information and should not be reproduced or redistributed to any other person in any form. The report/message is based upon publicly available information, findings of our research wing "East wind" & information that we consider reliable, but we do not represent that it is accurate or complete and we do not provide any express or implied warranty of any kind, and also these are subject to change without notice. The recipients of this report should rely on their own investigations, should use their own judgment for taking any investment decisions keeping in mind that past performance is not necessarily a guide to future performance & that the value of any investment or income are subject to market and other risks. Further it will be safe to assume that NSL and /or its Group or associate Companies, their Directors, affiliates and/or employees may have interests/ positions, financial or otherwise, individually or otherwise in the recommended/mentioned securities/mutual funds/ model funds and other investment products which may be added or disposed including & other mentioned in this report/message. NSL or any of its affiliates or employees shall not be in any way responsible for any loss or damage that may arise to any person from any action taken based on the above information or inadvertent error in the information contained in this report/message

Narnolia Securities Ltd.

Narnolia Research Lab Stellar IT Park 5th Floor Office Space No. 6 Tower-II Ind Plot No. C-25 Sector-62 Noida Ph : 0120-4215110	Central Strategy Desk - Kolkata 124 1st Floor 7/1 Lords Sinha Road Kolkata - 71 Ph : 033-22821500 M : 93347 14418, 98302 69810
--	---