

SGX NIFTY : 7718.50 (103 Pt Down)

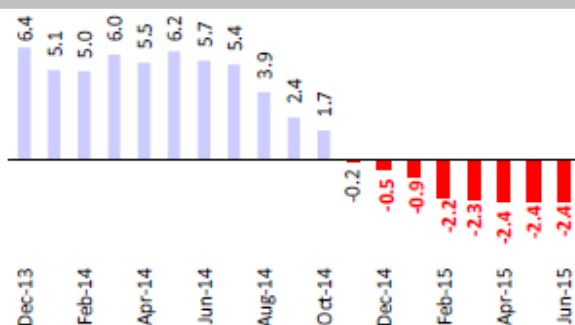
Quote of the Day

"An argument is made that there are just too many question marks about the near future; wouldn't it be better to wait until things clear up a bit?...face up to two unpleasant facts: The future is never clear [and] you pay a very high price for a cheery consensus. Uncertainty actually is the friend of the buyer of long term values."

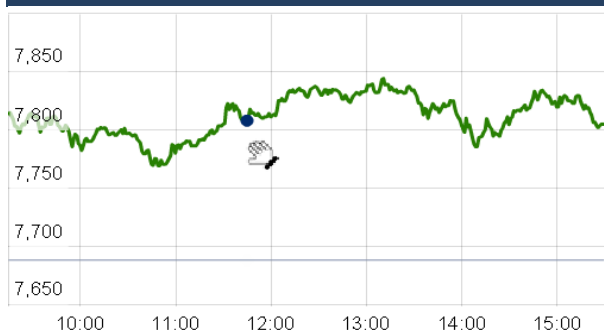
Warren Buffett

Chart of the Day

WPI Trend



Index Action Nifty (9th Sept 15)



Index

Contents	Page	Coverage
News	2	Update
Economic Calendar	3	Update

Market

Name	Value	Change
Sensex	25,719.58	401.17
Nifty	7818.60	130.35
DOW	17,545.18	67.78
NASDAQ	4,756.53	(55.30)
CAC	4,664.59	66.33
DAX	10,303.21	31.76
FTSE	6,229.01	82.91
NIKKEI	18,039.55	(730.36)
HANG SENG	21,588.61	(542.70)
EW ALL SHARE	13496.18	229.43

Instituional Turnover

FII

Investor	Buy(Cr.)	Sale(Cr.)	Net(Cr.)
09-Sep-15	4143.08	4595.21	(452.13)
Sept,15	37316.55	39616.51	(2299.96)
2015	758808.10	738956.85	19851.25

DII

Investor	Buy(Cr.)	Sale(Cr.)	Net(Cr.)
09-Sep-15	2312.81	1118.23	1194.58
Sept,15	15792.35	14354.72	1437.63
2015	292580.59	265440.42	27140.17

Commodity Price

Commodity/Currencies	Value	
GOLD	26085.00	↓
SILVER	35290.00	↓
CRUDEOIL	42.31	↓
COPPER	362.95	↑
NATURALGAS	176.90	↓
DOLLAR/RS.	66.41	↓
EURO/RS.	74.79	↑
POUND/RS.	102.24	↓

Market Snapshot

Top Price Performers

Top Performers 1D	% Change	Top Performers 1W	% Change	Top Performers 1M	% Change
JRG	19.93	JRG	60.48	ORISSASP	82.57
NITINFIRE	19.71	SUJANATOW	31.50	JUBLINDS	59.77
LITL	18.71	PVP	27.19	DSINVEST	44.81
SUJANATOW	18.43	IMPEXFERO	26.04	ESTER	39.64
DEEPIND	18.25	KGL	25.79	DSKULKARNI	31.88

Worst Price Performers

Worst Performers 1D	% Change	Worst Performers 1W	% Change	Worst Performers 1M	% Change
ENERGYDEV	(15.43)	AMTEKAUTO	(37.09)	AMTEKAUTO	(78.84)
JMDTELEFILM	(9.84)	ENERGYDEV	(36.53)	AHMEDFORGE	(63.90)
AADHAARVEN	(8.33)	DECNGOLD	(30.13)	AMTEKINDIA	(61.95)
OMNITECH	(7.65)	JMTAUTOLD	(22.46)	JMTAUTOLD	(56.22)
EUROCERA	(7.42)	ROLATAN	(22.45)	ROLATAN	(53.61)

Top News

- **JSW Steel** has registered a four percent fall in crude steel production at 10.66 lakh tonnes in August, 2015 as compared to 11.16 lakh tonnes in the same month last year. The production of long rolled products registered a growth of 3.57 percent at 2.03 lakh tonnes in August this year as compared to 1.96 lakh tonnes in the corresponding month of 2014.
- **Hero MotorCorp** launched its first overseas manufacturing plant in Cauca, Columbia. Built at a capacity of USD 70 million, the plant has an installed capacity of 80,000 units per year, which is expected to go up to 1, 50,000 units in the second phase.
- **European Commission and US Department of Justice** authorised General Electric to acquire Alstom's energy business for 12.4-billion euro (USD 13.9 billion). This was after agreeing to sell some of the French company's turbine assets to Italian rival Ansaldo Energia.
- **Mahindra & Mahindra (M&M)** announced investment of Rs 2,000 crore in Tamil Nadu, adding that the amount can be doubled by 2022. Mahindra & Mahindra Ltd is signing an MoU with the Government of Tamil Nadu wherein it commits to invest Rs 2,000 crore including its investments in Mahindra Research Valley (MRV), a new Test track for MRV and an automotive plant to meet the company's future needs over the next 5 years
- **ITC** has said its subsidiary Russell Credit has acquired Wills Corporation, another subsidiary of the company . Russell Credit Ltd, a wholly owned subsidiary of ITC, has acquired the entire equity share capital of Rs 4.89 crore of Wills Corporation Ltd (Wills), another wholly owned subsidiary of the company
- **IL&FS Transportation Networks** its subsidiaries have signed two agreements with NHAI worth Rs 4,173.92 crore for four-laning two sections of NH-6 in Maharashtra. The concession agreement for development of 4-laning of Fagne-Gujarat/Maharashtra Border (Package-III) section of NH-6 in the State of Maharashtra from 510 km to 650.79 km has been signed by Fagne Songadh Expressway Ltd, a wholly-owned subsidiary of the company with National Highways Authority of India (NHAI),"
- **Maruti Suzuki** has commenced production of the the upcoming super mini, the Baleno at its Manesar facility and images of the first car have hit the interweb. The Baleno hatchback was codenamed the YRA and a board at the production line also depicts the same. The first car that is seen here is destined for the European customer indicating that Maruti Suzuki plans to ship the first few batches abroad
- **CCI approves amalgamation of Aditya Birla Chemicals with Grasim Industries**
- **Australian Bureau of Statistics said that Australian unemployment rate** fell to a seasonally adjusted 6.2%, from 6.3% in the preceding month. Analysts had expected Australian unemployment rate to fall to 6.2% last month
- **National Bureau of Statistics of China said that Chinese CPI** rose to an annual rate of 0.5%, from 0.3% in the preceding month. Analysts had expected Chinese CPI to rise 0.4% last month.
- **Bank of Japan** said that Japan's Corporate Goods Price Index fell to a seasonally adjusted annual rate of -3.6%, from -3.0% in the preceding month. Analysts had expected Japan's Corporate Goods Price Index to fall to -3.3% last month.
- **U.S. Labor Department said that the number of job openings**, excluding the farming industry, increased to 5.753 million from 5.323 million in June, whose figure was revised up from a previously reported 5.249 million. Analysts had expected the number of job openings to fall to 5.288 million in July.
- **Insituto Nacional de Estadistica Y Geografia said that Mexican CPI fell** to a seasonally adjusted 2.59%, from 2.74% in the preceding month. Analysts had expected Mexican CPI to fall to 2.62% last month.

Economic Calendar

Country	Monday 7th Sept 15	Tuesday 8th Sept 15	Wednesday 9th Sept 15	Thursday 10th Sept 15	Friday 11th Sept 15
US	Labor Market Conditions Index m/m .	NFIB Small Business Index ,Consumer Credit m/m .	JOLTS Job Openings ,Crude Oil Inventories , 10-y Bond Auction , Federal Budget Balance , Treasury Currency Report .	Unemployment Claims , Import Prices m/m , Wholesale Inventories m/m , Natural Gas Storage .	PPI m/m , Core PPI m/m , Prelim UoM Consumer Sentiment , Prelim UoM Inflation Expectations , 30-y Bond Auction .
UK/EURO ZONE	Sentix Investor Confidence , German Industrial Production m/m , Construction PMI , BRC Retail Sales Monitor y/y .	Labor Market Conditions Index m/m .	French Gov Budget Balance , French Trade Balance , German 10-y Bond Auction .	French Final Non-Farm Payrolls q/q , French Industrial Production m/m , MPC Official Bank Rate Votes , Official Bank Rate , Asset Purchase Facility , MPC Asset Purchase Facility Votes , MPC Rate Statement .	German Final CPI m/m , Italian Industrial Production m/m , Construction Output m/m , 30-y Bond Auction .
INDIA					

Narnolia Securities Ltd.

Narnolia Research Lab

Stellar IT Park | 5th Floor | Office Space No. 6 | Tower-IIInd Plot No. C-25 | Sector-62 | Noida
| Ph : 0120-4215110

Central Strategy Desk - Kolkata

124 | 1st Floor | 7/1 Lords Sinha Road | Kolkata - 71
Ph : 033-22821500 | M : 93347 14418, 98302 69810