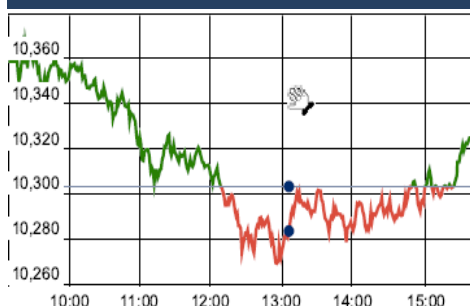


KEY LEVELS

Support 1 : 10203
Support 2 : 10123

Resistance 1 : 10353
Resistance 2 : 10444

Nifty Intraday Chart



Market Outlook

Indian equities gave a volatile movement throughout the day on Thursday and after opening on a subdued note, nifty traded in the band of 10267 - 10368. At the end of the day the index closed at 10308.90. It had a net gain of 0.06% over the previous day's close. The broader market was in favor of bulls as the small cap and midcap indices outshined the benchmark index and closed the day after gaining 0.8%-1.2%.

On the sectoral front, some buying interest was witnessed in PSU Banking and Metal stocks while the other major indices remained subdued. The breadth of the market was positive and about three shares advanced for every share declined at NSE.

Nifty trading above 23 times its trailing 12 months earning requires the market to go in for a price or time correction. Though we need to remember Newton's 1st Rule- "An object at rest stays at rest and an object in motion stays in motion with the same speed and in the same direction unless acted upon by an unbalanced force"

So Nifty that has smartly rallied along with other global markets over last 10-12 months and is now touching a high level of valuation surely needs some unbalanced force to get back to a normal level of valuation. A Recent statement by Chinese Central Bank (PBOC) of "latent risk accumulating, including some that are 'hidden, complex, sudden, contagious and hazardous.'" could be one of those unbalanced force.

Nifty RSI has exhibited negative divergence on 3rd November and suggests caution

Market

Market	Value	% Change
--------	-------	----------

Morning Traded Market

Yesterday Closing Market

Sensex	33,218.81	-0.46%
Nifty	10,308.95	0.06%

EW ALL SHARE	19,236.46	0.38%
--------------	-----------	-------

% Change in 1 day

Institutional Turnover

FII

Investor	Buy(Cr.)	Sale(Cr.)	Net(Cr.)
09-Nov-17	5654	6367	(714)
Nov-17	45433	56682	(11249)
2017	1088650	1123015	(34365)

DII

Investor	Buy(Cr.)	Sale(Cr.)	Net(Cr.)
09-Nov-17	3444	3213	231
Nov-17	31138	33052	(1914)
2017	692673	622553	70120

Event Today Consolidation of Shares

ESARIND

(Exdate : 10.11.2017)

Interim

ASMTEC : Rs. 2.5/-, HEXAWARE: Rs1/-

MAHSHRE : Rs 0.45/-, PFC : Rs6/-

PPAP : Rs 2/-, SRTRANSFIN : Rs 5/-

WSFIN : Rs 4.25/-

(Exdate : 10.11.2017)

Bonus Issue

GGPL (Ratio : 1:20)

(Exdate : 10.11.2017)

Result

ALBK, ASHOKA, ATLASCYCLE

BALAJITELE, BANKINDIA , BPCL

BOSCHLTD, BRIGADE, COCHINSHIP

DENABANK,DLF, EVEREADY, GABRIEL

GAYATRI, GESHIP, GMDCLTD

HINDCOPPER, HSIL, IL&FSTRANS

MOTHERSUMI, M&M, MRF, NESTLEIND

NILKAMAL, NOVARTIND, OIL, PFIZER

RUPA, SBIN, SOBHA, SUNTV, SUZLON

Quote of the Day : "Absent a lot of surprises, stocks are relatively predictable over twenty years. As to whether they're going to be higher or lower in two to three years, you might as well flip a coin to decide."
Peter Lynch

ASHOKLEY

"HOLD"

10th Nov 2017

The commercial vehicle giant has posted 14%YoY growth to Rs.6047 crore of net revenue in 2QFY18. The company witnessed 23%YoY spurt in the volumes during the quarter owing to strong infra activity and heavy discounting. Realization improved by 7%YoY because of price increases taken during the first quarter to net off the cost increase due to BS-IV transition. EBITDA margin declined by approx 150 bps YoY to 10.1% during the quarter on account of higher other expenses which includes expenses related to Hinduja Foundries Limited and higher discounting. PAT for the quarter stood at Rs. 334 crores. Going ahead, the company is focusing on to launch one new product every quarter to expand its LCV portfolio and gain more market share in this category. Ashok Leyland is also working towards a renewed thrust in the international markets, with network expansion and dedicated products. The company has also reduced its net debt to zero level on the standalone basis and generating more cash to fulfill its future expansion requirements. Considering heavy discounting in the industry and increasing raw material prices we have revised our FY19E EPS estimates downward by 3.8% and change our rating from BUY to HOLD, with a target price of Rs.124 (previous target price Rs.127). Although the company has achieved our recommended target of Rs.127 on 26th October 2017.

IRB

"NEUTRAL"

9th Nov 2017

IRB posted stable earning numbers in Q2FY18 which is in line with our expectation. The company has successfully transferred IRB Pathankot to IRB InvIT trust during the quarter at 1.3x Book value. This move has off-loaded debt of Rs.943 Cr and debt to equity has improved to 1.7x. Revenue visibility continues to decline from 3.45x to 1.97x of TTM revenue. Recently Government has announced its ambitious "Bharatmala" project and will invest around 6.9 lakh Cr in roads and Highway sector which is a big booster for the infra companies . Out of 6.9 lakh Cr, 1.4 lakh Cr will be awarded through PPP mode, which will benefit players like IRB though it may take time to flow in new orders. Our FY18 estimate remains intact and we continue to believe 15% EPC revenue growth and 5-6% traffic growth. However FY19 revenue growth seems to be flat based on the current order book. Considering the slowdown in new BOT project orders, we change our view on the stock from "HOLD" to "NEUTRAL" with target price Rs.245.

*For details, refer to our daily report- India Equity Analytics

Top News**MGL concall update:**

- Company is about to start supplying gas in GA3 (Raigad areas) and NH-4 highway.
- 1 New cng station commissioned last quarter and 3 new stations are under construction.
- Management expects volume growth of 5-6% in H2FY18.
- Margins expect to be steady in FY18.
- 100,000 new vehicles in Mumbai are expected to come in next 6 months.
- No growth is observed in the volume of the public transport vehicles. The ratio of public : private vehicle is 40:60
- Management expects industrial PNG volumes to up as alternate fuel cost goes up.
- Capex guidance for FY18E & FY19E- Rs.250 Cr each
- Management doesnot expect any major impact of arrival of electric vehicles, as CNG is the second cleanest fuel and there are multiple challenges in electric vehicles

Petronet LNG concall update:

- Capacity utilization at Kochi terminal stands at 15% in Q2, management has guided for further sequential improvement in utilization.
- Dahej expansion to 17.5 MT is going on schedule and is expected to complete by Q1FY19.
- Guidance for Tax rate is 30-34%. Now the company is out of MAT.
- Company has successfully renegotiated Gorgon volume contact with Mobil Australia Resource Company, an affiliate of Exxon Mobil Company.
- Uniform tariff may take few quarters more, decision is pending with PNGRB.

CIPLA 2QFY18 CONCALL HIGHLIGHTS

- >>Filed 5 products in Q2FY18 and expecting with a target to file 20- 25 ANDAs in the FY18.
- >>Strategic partnership with Serum Institute of India and launched Onco BCG.
- >>Diabetes franchise gaining momentum with traction in brands Prominad and Vysov.
- >>Approval received for Sevelamer from the Invagen pipeline.
- >> Ramp-up expected in the US launch trajectory in 3QFY18 and upcoming quarters with a good mix of differentiated product launches.
- >>South Africa business delivered its highest quarterly sales in history of Rs.1.06 billion.
- >>Cipla grew ahead at 11.3% in the private market.
- >>launched 8 New products in H1 FY18.
- >>Global access business grew 7%.
- >> Emerging markets territories is deepening respiratory franchise.
- >>H2FY18 and FY19 will be a good year.
- >>In the coming quarters EBITDA will grow by 100 basis points every quarter.
- >>Mgmt is expecting similar no.s in other expenses, Excise duty will get knocked off and Sales will be increased QoQ.
- >> From 3QFY18 amortisation will back to 1QFY18.

Result Calendar Q2FY18

BSE Code	Company Name	Date	BSE Code	Company Name	Date
524208	AARTIIND	10-Nov-17	540678	COCHINSHIP	10-Nov-17
517356	ACIIN	10-Nov-17	530859	COSBOARD	10-Nov-17
524091	ACRYSIL	10-Nov-17	508814	COSMOFILMS	10-Nov-17
539189	ADHBHUTIN	10-Nov-17	502137	DECCANCE	10-Nov-17
522273	AHMDSTE	10-Nov-17	506401	DEEPAKNI	10-Nov-17
532351	AKSHOPTFBR	10-Nov-17	532121	DENABANK	10-Nov-17
532480	ALBK	10-Nov-17	506405	DHARAMSI	10-Nov-17
539523	ALKEM	10-Nov-17	511451	DHARFIN	10-Nov-17
531681	AMARDEE	10-Nov-17	530959	DIANATEA	10-Nov-17
531991	AMRAAGRI	10-Nov-17	538432	DIVINUS	10-Nov-17
512091	ANSHNCO	10-Nov-17	532868	DLF	10-Nov-17
514482	ASAHIIND	10-Nov-17	523618	DREDGECORP	10-Nov-17
533271	ASHOKA	10-Nov-17	514118	ESKAY	10-Nov-17
526187	ASHRAM	10-Nov-17	521137	EUREKAI	10-Nov-17
530899	ASIAPAK	10-Nov-17	531508	EVEREADY	10-Nov-17
531847	ASTAR	10-Nov-17	531599	FDC	10-Nov-17
512433	ASUTENT	10-Nov-17	500940	FINOLEXIND	10-Nov-17
505029	ATLASCYCLE	10-Nov-17	523672	FLEXFO	10-Nov-17
531268	B2BSOFT	10-Nov-17	533213	FRONTSEC	10-Nov-17
532989	BAFNAPHARM	10-Nov-17	505714	GABRIEL	10-Nov-17
532382	BALAJITELE	10-Nov-17	500655	GARWARPOLY	10-Nov-17
531591	BAMPSL	10-Nov-17	532183	GAYATRI	10-Nov-17
532149	BANKINDIA	10-Nov-17	500620	GESHIP	10-Nov-17
524687	BASANTGL	10-Nov-17	538788	GILADAFINS	10-Nov-17
500048	BEML	10-Nov-17	533104	GLOBUSSPR	10-Nov-17
512195	BENTCOM	10-Nov-17	532181	GMDCLTD	10-Nov-17
539662	BFLDEV	10-Nov-17	530317	GODAVARI	10-Nov-17
505681	BIMETAL	10-Nov-17	531928	GOLCA	10-Nov-17
539290	BINDALAGRO	10-Nov-17	500166	GOODRICKE	10-Nov-17
502216	BOMBOT	10-Nov-17	539522	GROVY	10-Nov-17
506315	BORAX	10-Nov-17	518029	GSCLCEMENT	10-Nov-17
500530	BOSCHLTD	10-Nov-17	540654	GSTL	10-Nov-17
500547	BPCL	10-Nov-17	500173	GUJFLUORO	10-Nov-17
530207	BRAWN	10-Nov-17	524080	HARLETH	10-Nov-17
532929	BRIGADE	10-Nov-17	532333	HBPOR	10-Nov-17
514045	BSL	10-Nov-17	532216	HBSTOCK	10-Nov-17
509486	CAPRIHANS	10-Nov-17	503689	HEALINV	10-Nov-17
540310	CFL	10-Nov-17	505720	HERCULES	10-Nov-17
531358	CHOICEIN	10-Nov-17	513599	HINDCOPPER	10-Nov-17
511742	CHOKSEC	10-Nov-17	539114	HINDSECR	10-Nov-17
530191	CHROMATIC	10-Nov-17	526217	HITECHCORP	10-Nov-17
532324	CINEVISTA	10-Nov-17	532359	HITKITGLO	10-Nov-17
521210	CITYMAN	10-Nov-17	535217	HPCBL	10-Nov-17
540481	CLFL	10-Nov-17	500187	HSIL	10-Nov-17
532104	CMSINFO	10-Nov-17	532414	IKFTECH	10-Nov-17
501831	COASTCORP	10-Nov-17	533177	IL&FSTRANS	10-Nov-17

509162	INDAG	10-Nov-17	513377	MMTC	10-Nov-17
517077	INDAGIV	10-Nov-17	500288	MOREPENLAB	10-Nov-17
509692	INDIANCARD	10-Nov-17	517334	MOTHERSUMI	10-Nov-17
532745	INDICAP	10-Nov-17	500290	MRF	10-Nov-17
517571	INDLMETER	10-Nov-17	511766	MUTHFTN	10-Nov-17
530747	INDOASIAF	10-Nov-17	539521	NAVIGANT	10-Nov-17
526871	INTECCAP	10-Nov-17	539016	NEIL	10-Nov-17
511208	IVC	10-Nov-17	500790	NESTLEIND	10-Nov-17
522245	IYKOTHITE	10-Nov-17	531959	NEWINFRA	10-Nov-17
512237	JAICORPLTD	10-Nov-17	523630	NFL	10-Nov-17
512233	JAYTEX	10-Nov-17	531083	NIHARINF	10-Nov-17
506943	JBCHEPHARM	10-Nov-17	523385	NILKAMAL	10-Nov-17
530405	JINDCAP	10-Nov-17	508924	NORTHPR	10-Nov-17
570004	JISLDVREQS	10-Nov-17	500672	NOVARTIND	10-Nov-17
500219	JISLJALEQS	10-Nov-17	516082	NRAGRINDQ	10-Nov-17
539947	JLL	10-Nov-17	538019	OBIL	10-Nov-17
504840	KAIRA	10-Nov-17	532466	OFSS	10-Nov-17
539014	KALPACOMME	10-Nov-17	539570	OFSTECH	10-Nov-17
531163	KEMISTAR	10-Nov-17	533106	OIL	10-Nov-17
502937	KESORAMIND	10-Nov-17	507609	OLYOI	10-Nov-17
590068	KHAITANLTD	10-Nov-17	534076	ORIENTREF	10-Nov-17
523218	KILBURN	10-Nov-17	590086	ORISSAMINE	10-Nov-17
524699	KILBURNC	10-Nov-17	531626	OROSMITHS	10-Nov-17
514221	KLIFESTYL	10-Nov-17	500317	OSWALAGRO	10-Nov-17
507598	KLRF	10-Nov-17	509099	OSWALEA	10-Nov-17
502150	KLYNCEM	10-Nov-17	521080	PASARI	10-Nov-17
532673	KMSUGAR	10-Nov-17	513228	PENIND	10-Nov-17
511138	KOTHARIFIN	10-Nov-17	500680	PFIZER	10-Nov-17
523323	KOVAI	10-Nov-17	526747	PGFOILQ	10-Nov-17
539384	KRISHNACAP	10-Nov-17	513403	PMTELELIN	10-Nov-17
530149	KSLIND	10-Nov-17	532387	PNC	10-Nov-17
523594	KUNSTOFF	10-Nov-17	514486	POLTC	10-Nov-17
530421	KUWERIN	10-Nov-17	537573	POLYMAC	10-Nov-17
531206	KWALITYCL	10-Nov-17	512481	POLYTEX	10-Nov-17
511728	KZLFIN	10-Nov-17	540717	PQIF	10-Nov-17
540192	LKPSEC	10-Nov-17	513532	PRADPME	10-Nov-17
539992	LLOYDSTEEL	10-Nov-17	531688	PRITHVIEXCH	10-Nov-17
539227	LOYAL	10-Nov-17	539359	PRITIKAUTO	10-Nov-17
505320	LYNMC	10-Nov-17	519014	PRSNTIN	10-Nov-17
534532	LYPSAGEMS	10-Nov-17	526801	PSL	10-Nov-17
500520	M&M	10-Nov-17	512591	PULSRIN	10-Nov-17
500264	MAFATIND	10-Nov-17	539962	QFSL	10-Nov-17
532896	MAGNUM	10-Nov-17	539678	QUICKHEAL	10-Nov-17
532525	MAHABANK	10-Nov-17	539814	RADHEY	10-Nov-17
532654	MCLEODRUSS	10-Nov-17	522257	RAJOOENG	10-Nov-17
531146	MEDICAMEQ	10-Nov-17	524230	RCF	10-Nov-17
513721	MFSINTRCRP	10-Nov-17	523650	REDEXPR	10-Nov-17
523343	MICROSE	10-Nov-17	531952	RIBATEX	10-Nov-17
538890	MKEXIM	10-Nov-17	526492	RISHIROOP	10-Nov-17

533017	RMMIL	10-Nov-17	511096	TVOLCON	10-Nov-17
500366	ROLTA	10-Nov-17	532513	TVSELECT	10-Nov-17
512115	ROSEMER	10-Nov-17	530363	UGARSUGAR	10-Nov-17
539561	ROXY	10-Nov-17	533644	UJAAS	10-Nov-17
532983	RPGLIFE	10-Nov-17	503671	UNIJOLL	10-Nov-17
534597	RTNINFRA	10-Nov-17	531091	UNITDCR	10-Nov-17
533122	RTNPOWER	10-Nov-17	517146	USHAMART	10-Nov-17
500367	RUBFILA	10-Nov-17	540729	VANTABIO	10-Nov-17
531099	RUBRAME	10-Nov-17	512517	VINVANI	10-Nov-17
533552	RUPA	10-Nov-17	538598	VISHAL	10-Nov-17
531869	SACHEMT	10-Nov-17	531668	VISIONCO	10-Nov-17
540181	SALEM	10-Nov-17	532016	WELLESLEY	10-Nov-17
500112	SBIN	10-Nov-17	526431	WELTI	10-Nov-17
539574	SCL	10-Nov-17	500444	WSTCSTPAPR	10-Nov-17
534598	SEPOWER	10-Nov-17	505583	WWTECHHOL	10-Nov-17
539682	SESL	10-Nov-17	512107	ZGOLKOND	10-Nov-17
539520	SHAILJA	10-Nov-17	509046	ZLEENCON	10-Nov-17
531290	SHDYECH	10-Nov-17	512367	ZSHERAPR	10-Nov-17
524336	SHHARICH	10-Nov-17	512291	ZSPEEDCO	10-Nov-17
539148	SHIVALIK	10-Nov-17	532762	ACE	11-Nov-17
532083	SHKALYN	10-Nov-17	533096	ADANIPOWER	11-Nov-17
532310	SHREERAMA	10-Nov-17	530499	AKCAPIT	11-Nov-17
530841	SHRIBCL	10-Nov-17	539277	ALSTONE	11-Nov-17
538897	SHRINIWAS	10-Nov-17	514286	ASHIMASYN	11-Nov-17
531738	SILICON	10-Nov-17	512573	AVANTI	11-Nov-17
504398	SJCORP	10-Nov-17	513502	BAROEXT	11-Nov-17
505192	SMLISUZU	10-Nov-17	531029	BHATEXT	11-Nov-17
532784	SOBHA	10-Nov-17	500335	BIRLACORPN	11-Nov-17
520057	SONASTEER	10-Nov-17	523019	BNRSEC	11-Nov-17
540079	SPRAYKING	10-Nov-17	533276	BSLIMITED	11-Nov-17
539217	SRESTHA	10-Nov-17	530789	CEEJAY	11-Nov-17
515081	SRIVAJRA	10-Nov-17	532992	CHLLTD	11-Nov-17
531509	STEP2COR	10-Nov-17	530427	CHOKSI	11-Nov-17
532348	SUBEX	10-Nov-17	507515	CJGEL	11-Nov-17
520056	SUNCLAYLTD	10-Nov-17	500147	CMIFPE	11-Nov-17
501110	SUNRINV	10-Nov-17	535142	CNEL	11-Nov-17
532733	SUNTV	10-Nov-17	533278	COALINDIA	11-Nov-17
532904	SUPREMEINF	10-Nov-17	522295	CONTROLPR	11-Nov-17
519604	SURFI	10-Nov-17	521220	DAMOINDUS	11-Nov-17
533101	SURYAAMBA	10-Nov-17	504256	DELTRON	11-Nov-17
532667	SUZLON	10-Nov-17	532610	DWARKESH	11-Nov-17
506863	SWADEIN	10-Nov-17	522027	EMAINDIA	11-Nov-17
512359	SWORDEDGE	10-Nov-17	500246	ENVAIREL	11-Nov-17
526506	SYSTMTXC	10-Nov-17	526468	EUROLED	11-Nov-17
521038	TAMJAIM	10-Nov-17	500150	FOSECOIND	11-Nov-17
533281	TECHNO	10-Nov-17	538881	GALADAFIN	11-Nov-17
532804	TIIL	10-Nov-17	530343	GENUSPOWER	11-Nov-17
522113	TIMKEN	10-Nov-17	500163	GODFRYPHLP	11-Nov-17
500412	TIRUMALCHM	10-Nov-17	532734	GPIL	11-Nov-17

513507	GUJCONT	11-Nov-17	540293	PRICOLLTD	11-Nov-17
532708	GVKPIL	11-Nov-17	530695	PRIMEPRO	11-Nov-17
508956	HBLEAS	11-Nov-17	532693	PUNJLLOYD	11-Nov-17
504176	HIGHENE	11-Nov-17	532891	PURVA	11-Nov-17
514428	HINDADH	11-Nov-17	531887	RAHME	11-Nov-17
503881	HINDSYNTEX	11-Nov-17	532503	RAJPALAYAM	11-Nov-17
532145	HOTLSILV	11-Nov-17	507966	RASRESOR	11-Nov-17
501295	IITL	11-Nov-17	532712	RCOM	11-Nov-17
531505	INDERGR	11-Nov-17	500390	RELINFRA	11-Nov-17
524648	INDOAMIN	11-Nov-17	517500	ROTO	11-Nov-17
500208	INDUNISS	11-Nov-17	532939	RPOWER	11-Nov-17
509709	INTLCONV	11-Nov-17	533470	RUSHIL	11-Nov-17
526859	ISFL	11-Nov-17	539346	SADBHIN	11-Nov-17
533033	ISGEC	11-Nov-17	521206	SAMTEX	11-Nov-17
511609	ISLCONSUL	11-Nov-17	523449	SHARP	11-Nov-17
520051	JAMNAAUTO	11-Nov-17	527005	SHREEPAC	11-Nov-17
532644	JKCEMENT	11-Nov-17	523790	SHUKJEW	11-Nov-17
530163	KERALAYUR	11-Nov-17	538667	SIROHIA	11-Nov-17
532067	KILPEST	11-Nov-17	503811	SIYSIL	11-Nov-17
531274	KINETRU	11-Nov-17	531506	SKRABUL	11-Nov-17
537750	KIRANVYPAR	11-Nov-17	540686	SMRUTHIORG	11-Nov-17
500241	KIRLOSBROS	11-Nov-17	540253	SNTCL	11-Nov-17
524520	KMCSHIL	11-Nov-17	504375	SOFTBPO	11-Nov-17
532997	KSK	11-Nov-17	538402	SPS	11-Nov-17
500510	LT	11-Nov-17	519242	SRDAPRT	11-Nov-17
532368	LYCOS	11-Nov-17	523351	STDSHOE	11-Nov-17
515093	MADHAV	11-Nov-17	531901	STERWEB	11-Nov-17
502157	MANGLMCEM	11-Nov-17	530419	SUMEDHA	11-Nov-17
533152	MBLINFRA	11-Nov-17	500404	SUNFLAG	11-Nov-17
526935	MBPARIKH	11-Nov-17	532154	SUNSHINE	11-Nov-17
539012	MEGRISOFT	11-Nov-17	531752	SUNTECHNO	11-Nov-17
500159	METROGLOBL	11-Nov-17	532509	SUPRAJIT	11-Nov-17
531338	MILESTONE	11-Nov-17	530239	SUVEN	11-Nov-17
538962	MIINDACORP	11-Nov-17	531115	SYNERGY	11-Nov-17
532539	MINDAIND	11-Nov-17	539842	SYSCO	11-Nov-17
532140	MOHITE	11-Nov-17	533170	TAMBOLI	11-Nov-17
505594	MULTIIN	11-Nov-17	506854	TANFACIND	11-Nov-17
532234	NATIONALUM	11-Nov-17	532869	TARMAT	11-Nov-17
532649	NECLIFE	11-Nov-17	533158	THANGAMAYL	11-Nov-17
530129	NILE	11-Nov-17	504973	TIFHL	11-Nov-17
519494	NKIND	11-Nov-17	532856	TIMETECHNO	11-Nov-17
504864	ORISSASP	11-Nov-17	509003	TRANOCE	11-Nov-17
538963	PACT	11-Nov-17	500422	TRANSCEM	11-Nov-17
526905	PADMAIND	11-Nov-17	511730	TRCFIN	11-Nov-17
540727	POOJA	11-Nov-17	502281	TRIVENIGQ	11-Nov-17
519359	POONADAL	11-Nov-17	500148	UFLEX	11-Nov-17
532933	PORWAL	11-Nov-17	506685	ULTRAMAR	11-Nov-17
523874	PRECISION	11-Nov-17	532746	UNITY	11-Nov-17
531802	PRERINFRA	11-Nov-17	526113	UNRYLMA	11-Nov-17

532729	UTTAMSUGAR	11-Nov-17	530063	YASHRAJC	11-Nov-17
500254	UTTAMVALUE	11-Nov-17	514266	ZENIFIB	11-Nov-17
532320	VAARAD	11-Nov-17	500825	BRITANNIA	12-Nov-17
526775	VALIANT	11-Nov-17	532799	HUBTOWN	12-Nov-17
531574	VASINFRA	11-Nov-17	538422	JACKSON	12-Nov-17
534741	VIRTUALG	11-Nov-17	531687	KGL	12-Nov-17
509055	VISAKAIND	11-Nov-17	535730	KHOOSURAT	12-Nov-17
531266	VSTILLERS	11-Nov-17			

Earning Estimate Q2FY18

BSE Code	Company Name	Sale (Cr.)	Sales Growth (%)	PAT (Cr.)	PAT Growth (%)
09-Nov-17	ENDURANCE	1625.00	12.20	108.20	21.20
09-Nov-17	ALLCARGO	1604.20	13.90	62.60	(3.90)
09-Nov-17	AUOPHARMA	4320.10	14.40	711.20	20.30
09-Nov-17	CROMPGREAV	900.00	1.10	59.50	7.40
09-Nov-17	GDL	303.50	6.20	18.10	4.90
09-Nov-17	INDIACEM	1262.70	(3.40)	18.30	(70.60)
09-Nov-17	JAGRAN	591.30	28.80	21.90	(71.00)
09-Nov-17	JINDALSTEL	5784.00	19.00	(637.30)	Loss
09-Nov-17	PAGEIND	645.30	20.00	82.50	20.10
09-Nov-17	SAIL	13857.20	23.40	(662.90)	Loss
09-Nov-17	SRF	1403.70	15.50	114.70	1.00
09-Nov-17	TATAMOTORS	69031.30	4.80	1232.20	50.40
10-Nov-17	ALKEM	1726.50	5.40	249.20	(11.90)
10-Nov-17	BANKINDIA	2572.70	(5.40)	(274.80)	PL
10-Nov-17	BOSCHLTD	3421.10	31.00	438.40	0.90
10-Nov-17	M&M	12224.10	20.20	1359.10	8.50
10-Nov-17	NESTLEIND	2319.40	(0.20)	279.50	(7.50)
10-Nov-17	SBIN	18499.60	2.20	2903.40	LP
10-Nov-17	SUNTV	668.60	6.90	282.50	4.50
11-Nov-17	JKCEMENT	999.00	9.70	56.00	36.90
11-Nov-17	BIRLACORPN	1268.60	64.90	21.60	(63.10)
11-Nov-17	COALINDIA	18620.00	14.80	2062.40	243.70
11-Nov-17	LT	26650.00	6.60	1145.00	10.90
11-Nov-17	NATIONALUM	2098.30	13.70	175.80	45.00

Result Q2FY18

BSE Code	Company Name	Sale (Cr.)	Sales Growth (%)	PAT (Cr.)	PAT Growth (%)
532522	PETRONET	7720.00	21.80	588.70	28.10
500575	VOLTAS	1037.00	25.35	95.00	(24.55)
500331	PIDILITIND	1514.00	24.86	253.00	11.87
502355	BALKRISIND	1114.50	22.18	202.98	(16.44)
500690	GSFC	1540.30	(5.95)	79.20	(36.65)
500411	THERMAX	1033.00	22.24	57.00	(4.46)
530001	GUJALKALI	595.00	14.73	106.40	21.71
532356	TRIVENI	1060.70	65.86	100.60	55.56
532865	MEGH	460.85	20.61	55.09	118.87
500008	AMARAJABAT	1427.00	6.09	127.22	(6.68)

590006	AMRUTANJAN	56.30	2.79	9.33	17.36
500031	BAJAJELEC	932.02	(6.00)	18.98	13.93
501425	BBTC	52.36	(21.56)	(11.02)	10.42
500033	BAJAJTEMPO	892.99	6.07	41.74	(16.98)
532622	GDL	80.18	(3.13)	7.68	(23.73)
532482	GRANULES	392.55	7.97	40.33	(1.20)
500104	HINDPETRO	54152.00	28.84	1734.00	147.25
532514	IGL	1245.47	29.41	168.47	16.85
530005	INDIACEM	1268.00	(3.02)	23.67	(62.07)
532705	JAGRAN	464.00	3.67	93.88	28.55
524000	MAGMA	531.29	(11.27)	48.77	(3.25)
505355	NESCO	82.55	9.67	48.39	2.54
533098	NHPC	1971.42	(16.17)	1018.64	(34.48)
532827	PAGEIND	625.70	18.34	84.05	22.40
520111	RATNAMANI	317.62	1.41	26.75	(6.27)
512529	SEQUENT	265.25	6.56	17.45	(438.83)
500570	TATAMOTORS	70155.00	7.70	2501.00	194.87
532515	TVTODAY	144.35	9.56	29.54	30.65
523261	VENKEYS	587.90	4.41	27.14	7654.29
520113	VESUVIUS	213.77	(3.81)	22.51	(11.59)

Economic Calendar					
Country	Monday 6th Nov 17	Tuesday 7th Nov 17	Wednesday 8th Nov 17	Thursday 9th Nov 17	Friday 10th Nov 17
US		NFIB Small Business Index , Mortgage Delinquencies , IBD/TIPP Economic Optimism , Consumer Credit m/m.	Crude Oil Inventories , 10- y Bond Auction, Crude Oil Inventories	Unemployment Claims , Final Wholesale Inventories m/m, Natural Gas Storage , 30-y Bond Auction , Federal Budget Balance.	Prelim UoM Inflation Expectations , Prelim UoM Consumer Sentiment ,
UK/EURO ZONE	German Factory Orders m/m , Sentix Investor Confidence , BRC Retail Sales Monitor y/y , PPI m/m	German Industrial Production m/m , French Gov Budget Balance , Halifax HPI m/m , ECOFIN Meetings , Italian Retail Sales m/m	10-y Bond Auction , RICS House Price Balance	German Trade Balance , French Industrial Production m/m , ECB Economic Bulletin , Italian Industrial Production m/m , Manufacturing Production m/m , Goods Trade Balance , Construction Output m/m , Industrial Production m/m.	German Final CPI m/m , French Prelim Private Payrolls q/q, Italian Prelim GDP q/q
INDIA					



Narnolia Securities Ltd

201 | 2nd Floor | Marble Arch Building | 236B-AJC Bose
Road | Kolkata-700 020 , Ph : 033-40501500

email: narnolia@narnolia.com,
website : www.narnolia.com

Risk Disclosure & Disclaimer: This report/message is for the personal information of the authorized recipient and does not construe to be any investment, legal or taxation advice to you. Narnolia Securities Ltd. (Hereinafter referred as NSL) is not soliciting any action based upon it. This report/message is not for public distribution and has been furnished to you solely for your information and should not be reproduced or redistributed to any other person in any form. The report/message is based upon publicly available information, findings of our research wing "East wind" & information that we consider reliable, but we do not represent that it is accurate or complete and we do not provide any express or implied warranty of any kind, and also these are subject to change without notice. The recipients of this report should rely on their own investigations, should use their own judgment for taking any investment decisions keeping in mind that past performance is not necessarily a guide to future performance & that the the value of any investment or income are subject to market and other risks. Further it will be safe to assume that NSL and /or its Group or associate Companies, their Directors, affiliates and/or employees may have interests/ positions, financial or otherwise, individually or otherwise in the recommended/mentioned securities/mutual funds/ model funds and other investment products which may be added or disposed including & other mentioned in this report/message.