

SGX NIFTY : 7517 (86 Pt Down)

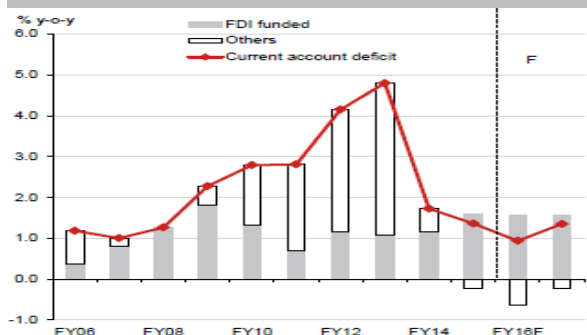
Quote of the Day

"Although I consider myself to be primarily in the quantitative school, the really sensational ideas I have had over the years have been heavily weighted toward the qualitative side where I have had a 'high-probability insight'. This is what causes the cash register to really sing."

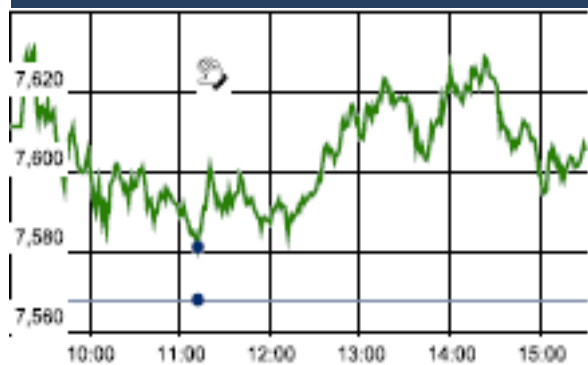
Warren Buffett

Chart of the Day

Current Account Deficit Trend



Index Action Nifty (9th Jan 16)



Index

Contents	Page	Coverage
News	2	Update
Economic Calendar	3	Update

Market

Name	Value	Change
Sensex	24,934.33	82.50
Nifty	7601.35	33.05
DOW	17,148.94	(276.09)
NASDAQ	4,643.63	(45.80)
CAC	4,333.76	(69.82)
DAX	9,849.34	(130.41)
FTSE	5,912.44	(41.64)
NIKKEI	Closed	
HANG SENG	19,898.23	(555.48)
EW ALL SHARE	13622.90	106.25

Instituional Turnover

FII

Investor	Buy(Cr.)	Sale(Cr.)	Net(Cr.)
9-Jan-16	3802.86	5039.81	(1236.95)
Jan,16	17864.64	21187.27	(3322.63)
2016	8943.90	7240.53	1703.37

DII

Investor	Buy(Cr.)	Sale(Cr.)	Net(Cr.)
9-Jan-16	2200.62	1196.63	1003.99
Jan,16	17864.64	21187.27	(3322.63)
2016	8943.90	7240.53	1703.37

Commodity Price

Commodity/Currencies	Value	
GOLD	25982.00	↓
SILVER	33824.00	↓
CRUDEOIL	37.08	↓
COPPER	301.40	↑
NATURALGAS	163.50	↑
DOLLAR/RS.	66.90	↑
EURO/RS.	73.06	↓
POUND/RS.	97.13	↑

Market Snapshot

Top Price Performers

Top Performers 1D	% Change	Top Performers 1W	% Change	Top Performers 1M	% Change
SHIV-VANI	20.00	SURANACORP	89.47	EUROCERA	108.36
TRIVENI	18.44	NUTEK	54.69	SPENTEX	106.67
NEXTMEDIA	18.25	PRADIP	50.00	ZYLOG	105.21
UTTAMSUGAR	15.70	CRANESSOFT	47.68	EKC	104.37
CALSREF	14.29	SUDAR	47.23	SUDAR	102.44

Worst Performers 1D	% Change	Worst Performers 1W	% Change	Worst Performers 1M	% Change
ESSDEE	(19.97)	ESSDEE	(37.68)	ESSDEE	(39.27)
SURANAIND	(9.94)	PARACABLES	(22.20)	SHRENUJ	(37.74)
BEDMUTHA	(8.48)	VALECHAENG	(19.66)	OUTCTYTRVL	(31.72)
ALPHAGEO	(6.21)	OUTCTYTRVL	(18.46)	ALPHAGEO	(23.91)
MARATHON	(5.67)	GEINDSYS	(17.64)	CADILAHC	(20.30)

Top News

- Tata Power** said it will raise Rs 500 crore by issuing unsecured redeemable non-convertible debentures (NCDs) on a private placement basis. The tenure of the instrument is seven years and "floating rate NCDs (are) linked with Base Rate of State Bank of India". The date of allotment of 5,000 debentures is January 16. The company has an installed generation capacity of 8,669 MW in the country and a presence in all the segments of the power sector such as fuel, logistics, generation (thermal, hydro, solar and wind), transmission, distribution and trading
- Container Corporation of India** announced that the management has detected a suspected case of misappropriation of company's funds of an approximate value of Rs 1.24 crore at one of its regional offices. The management has initiated immediate action against the suspected perpetrators and has also taken steps to plug loopholes in the system to prevent any similar leakages in the future.
- Birla Corp** has emerged as the frontrunner to acquire Anil Ambani's cement business, a wholly-owned arm of flagship Reliance Infrastructure, following a competitive sale process that also saw rival offers from leading private equity buyout funds. Birla Corp's offer in the range of Rs 5,000-5,100 crore is said to be in line with Reliance Group's expectations. It trumped competing PE bids pegged at Rs 4,200-4,500 crore.
- Ashok Leyland** said it has bagged an order for 680 vehicles and spare parts worth USD 50 million (over Rs 330 crore) from Zimbabwe. The order is from the Ministry of Local Government, Public Works and National Housing, Government of Republic of Zimbabwe
- Shobha** Says Have Achieved New Sales Of 8.06 Lakh Sq Ft Valued At Rs 478.3 Cr In Q3 Average Realisation In Q3 At Rs 5,932/Sq Ft Bangalore Market Remains Strong For The Co
- L&T Hydrocarbon Engineering**, a fully owned subsidiary of L&T, in consortium with McDermott has bagged a n offshore contract from ONGC values at Rs 2450 crore for the development of its Vashishta and S1 deepwater fields situated off the east coast of India.
- Bharat Heavy Electricals Limited (Bhel)** has commissioned two 220/20kV substations in Afghanistan. The project has been executed by Bhel on EPC basis . The substations have been commissioned at Charikar, around 60 kms from Kabul and Doshi, around 150 kms from Kabul,
- China said that Chinese PPI** remained unchanged at an annual rate of -5.9%, from -5.9% in the preceding month. Analysts had expected Chinese PPI to rise to -5.8% last month.
- U.S. Wholesale Inventories** fell to a seasonally adjusted annual rate of -0.3%, from -0.3% in the preceding quarter whose figure was revised down from -0.1%. Analysts had expected U.S. Wholesale Inventories to fall -0.1% in the last quarter.
- Canadian unemployment rate** remained unchanged at a seasonally adjusted 7.1%, from 7.1% in the preceding month. Analysts had expected Canadian unemployment rate to remain unchanged at 7.1% last month.
- U.S. non-farm payrolls** rose to a seasonally adjusted 292K, from 252K in the preceding month whose figure was revised up from 211K. Analysts had expected U.S. non-farm payrolls to rise 200K last month.
- Brazilian CPI rose** to 10.67%, from 10.48% in the preceding month. Analysts had expected Brazilian CPI to rise to 10.77% last month.
- U.S. Wholesale Inventories** fell to a seasonally adjusted annual rate of -0.3%, from -0.3% in the preceding quarter whose figure was revised down from -0.1%.

Result Q3FY16

BSE Code	Company Name	Date	BSE Code	Company Name	Date
506597	AMAL	9-Jan-16	507948	KEYCORP	15-Jan-16
532414	IKFTECH	9-Jan-16	500458	KORE	15-Jan-16
532850	MIC	9-Jan-16	512455	LLOYDSME	15-Jan-16
502742	SINTEX	9-Jan-16	511000	MADHUSE	15-Jan-16
531082	ALANKIT	11-Jan-16	511766	MUTHTFN	15-Jan-16
526735	EXCAST	11-Jan-16	532541	NIITTECH	15-Jan-16
539206	GVBL	11-Jan-16	533273	OBEROIRLTY	15-Jan-16
500220	JASCH	11-Jan-16	533107	PIPAVAVDOC	15-Jan-16
531357	MERMETL	11-Jan-16	507649	RASOI	15-Jan-16
530439	SIDDHA	11-Jan-16	590005	TIDEWATER	15-Jan-16
524661	WELCURE	11-Jan-16	511736	USHDI	15-Jan-16
531663	YUVRAAJHPL	11-Jan-16	505537	ZEEL	15-Jan-16
532772	DCBBANK	12-Jan-16	520066	JAYBARMARU	16-Jan-16
500469	FEDERALBNK	12-Jan-16	532652	KTKBANK	16-Jan-16
534757	FOCUSIRL	12-Jan-16	533602	LESHAIND	16-Jan-16
532187	INDUSINDBK	12-Jan-16	500253	LICHSGFIN	16-Jan-16
531648	MAHAVIRIND	12-Jan-16	517320	SAVINFOCO	16-Jan-16
532540	TCS	12-Jan-16	511756	ABIRAFN	18-Jan-16
531390	UPSURGE	12-Jan-16	526847	ASHSI	18-Jan-16
539222	VMV	12-Jan-16	500820	ASIANPAINT	18-Jan-16
531247	ALPHA	13-Jan-16	503960	BBL	18-Jan-16
535486	DELTALTD	13-Jan-16	532848	DELTACORP	18-Jan-16
508906	EVERESTIND	13-Jan-16	500186	HINDOILEXP	18-Jan-16
590003	KARURVYSYA	13-Jan-16	500247	KOTAKBANK	18-Jan-16
531212	NALINLEA	13-Jan-16	532819	MINDTREE	18-Jan-16
539016	NEIL	13-Jan-16	500355	RALLIS	18-Jan-16
535658	PAWANSUT	13-Jan-16	520086	SICAL	18-Jan-16
523445	RIIL	13-Jan-16	513262	SSWL	18-Jan-16
538611	RTFL	13-Jan-16	513434	TATAMETALI	18-Jan-16
533101	SURYAAMBA	13-Jan-16	504966	TINPLATE	18-Jan-16
538465	AMARSEC	14-Jan-16	517506	TTKPRESTIG	18-Jan-16
590122	ASHIKACR	14-Jan-16	539331	VETO	18-Jan-16
532175	CYIENT	14-Jan-16	507685	WIPRO	18-Jan-16
590080	EASTERNGAS	14-Jan-16	531147	ALICON	19-Jan-16
538708	ETIL	14-Jan-16	522134	ARTSONEN	19-Jan-16
500209	INFY	14-Jan-16	531340	BERVINL	19-Jan-16
526865	JAINCO	14-Jan-16	526797	GREENPLY	19-Jan-16
532637	MANGALAM	14-Jan-16	532281	HCLTECH	19-Jan-16
523704	MASTEK	14-Jan-16	500188	HINDZINC	19-Jan-16
533399	PARAPRINT	14-Jan-16	532742	PAUSHAKLTD	19-Jan-16
500337	PRIMESECU	14-Jan-16	524570	PODARPIGQ	19-Jan-16
501833	CHOWGULSTM	15-Jan-16	532215	AXISBANK	20-Jan-16
531471	DUKEOFS	15-Jan-16	511072	DHFL	20-Jan-16
511288	GRUH	15-Jan-16	513108	GANDHITUBE	20-Jan-16
506879	GUJTHEM	15-Jan-16	532345	GATI	20-Jan-16
500696	HINDUNILVR	15-Jan-16	533148	JSWENERGY	20-Jan-16
500850	INDHOTEL	15-Jan-16	532400	KPIT	20-Jan-16

500262	MAFATLAFIN	20-Jan-16	505412	WENDT	25-Jan-16
523828	MENONBE	20-Jan-16	532774	AFL	27-Jan-16
531209	NUCLEUS	20-Jan-16	500049	BEL	27-Jan-16
532218	SOUTHBANK	20-Jan-16	500830	COLPAL	27-Jan-16
500408	TATAELXSI	20-Jan-16	507886	DHRUVES	27-Jan-16
513010	TATASPONGE	20-Jan-16	523736	DPL	27-Jan-16
532538	ULTRACEMCO	20-Jan-16	533208	EMAMIPAP	27-Jan-16
533573	APLLTD	21-Jan-16	532424	GODREJCP	27-Jan-16
500215	ATFL	21-Jan-16	509488	GRAPHITE	27-Jan-16
532523	BIOCON	21-Jan-16	500010	HDFC	27-Jan-16
506365	CHEMOPH	21-Jan-16	532662	HTMEDIA	27-Jan-16
500645	DEEPAKFERT	21-Jan-16	533293	KIRLOSENG	27-Jan-16
523708	EIMCOELECO	21-Jan-16	500730	NOCIL	27-Jan-16
500086	EXIDEIND	21-Jan-16	532988	RANEENGINE	27-Jan-16
500150	FOSECOIND	21-Jan-16	512115	ROSEMER	27-Jan-16
519552	HERITGFOOD	21-Jan-16	507984	SERIND	27-Jan-16
502330	IPAPPM	21-Jan-16	532432	UNITDSPR	27-Jan-16
532720	M&MFIN	21-Jan-16	500096	DABUR	28-Jan-16
539268	SYNGENE	21-Jan-16	500171	GHCL	28-Jan-16
501242	TCIFINANCE	21-Jan-16	531600	GOGIACAP	28-Jan-16
509966	VSTIND	21-Jan-16	532174	ICICIBANK	28-Jan-16
523411	ADCINDIA	22-Jan-16	505750	JOSTS	28-Jan-16
500027	ATUL	22-Jan-16	532926	JYOTHYLAB	28-Jan-16
532792	CAIRN	22-Jan-16	501874	MACKINN	28-Jan-16
500147	CMIFPE	22-Jan-16	500264	MAFATIND	28-Jan-16
506395	COROMANDEL	22-Jan-16	532313	MAHLIFE	28-Jan-16
533088	MHRIL	22-Jan-16	531319	MARUTISE	28-Jan-16
504398	SJCORP	22-Jan-16	509196	MMRUBBR-B	28-Jan-16
506680	TRELCH-B	22-Jan-16	532777	NAUKRI	28-Jan-16
524019	HYDROS&S	23-Jan-16	500313	OILCOUNTUB	28-Jan-16
533179	PERSISTENT	23-Jan-16	511702	PARSHINV	28-Jan-16
524037	RAMAPHO	23-Jan-16	532987	RBL	28-Jan-16
517447	RSSOFTWARE	23-Jan-16	532812	TFL	28-Jan-16
506690	UNICHEMLAB	23-Jan-16	590013	XPROINDIA	28-Jan-16
520119	ASAL	25-Jan-16	521097	AMARJOTHI	29-Jan-16
512313	BIJLTEX	25-Jan-16	500067	BLUESTARCO	29-Jan-16
533167	COROENGG	25-Jan-16	534804	CARERATING	29-Jan-16
500180	HDFCBANK	25-Jan-16	511243	CHOLAFIN	29-Jan-16
533217	HMVL	25-Jan-16	532927	ECLERX	29-Jan-16
530055	HRMNYCP	25-Jan-16	505700	ELECON	29-Jan-16
538835	INTELLECT	25-Jan-16	505714	GABRIEL	29-Jan-16
500165	KANSAINER	25-Jan-16	511676	GICHSGFIN	29-Jan-16
500241	KIRLOSBROS	25-Jan-16	500228	JSWSTEEL	29-Jan-16
517449	MAGNAELQ	25-Jan-16	523207	KOKUYOCMLN	29-Jan-16
532661	RML	25-Jan-16	532504	NAVINFLUOR	29-Jan-16
512309	ROSETEX	25-Jan-16	504112	NELCO	29-Jan-16
532156	VAIBHAVGBL	25-Jan-16	506590	PHILIPCARB	29-Jan-16
532498	SHRIRAMCIT	29-Jan-16	532977	BAJAJ-AUTO	4-Feb-16
538876	STSERSV	29-Jan-16	500490	BAJAJHLDNG	4-Feb-16

501110	SUNRINV	29-Jan-16	509480	BERGEPAIN	4-Feb-16
532390	TAJGVK	29-Jan-16	532173	CYBERTECH	4-Feb-16
532953	VGUARD	29-Jan-16	522261	DOLPHINOFF	4-Feb-16
526125	ARHNTTO	30-Jan-16	526299	MPHISIS	4-Feb-16
526187	ASHRAM	30-Jan-16	500470	TATASTEEL	4-Feb-16
530803	BHAGERIA	30-Jan-16	500414	TIMEX	4-Feb-16
521216	DHANROTO	30-Jan-16	532460	PONNIERODE	5-Feb-16
531533	ECOM	30-Jan-16	530073	SANGHVIMOV	5-Feb-16
523754	EPCIN	30-Jan-16	514142	TTL	5-Feb-16
514448	JYOTIRES	30-Jan-16	531599	FDC	6-Feb-16
530139	KREONFIN	30-Jan-16	532133	IFGLREFRAC	6-Feb-16
530243	MANGASOF	30-Jan-16	523323	KOVAI	6-Feb-16
531221	MAYURFL	30-Jan-16	524709	NAGAAGRI	6-Feb-16
514460	OSWAYRN	30-Jan-16	530233	AUROLAB	9-Feb-16
511403	SAIJEEV	30-Jan-16	530609	CARNATIN	9-Feb-16
539217	SRESTHA	30-Jan-16	505800	RANEHOLDIN	9-Feb-16
521234	SRINACHA	30-Jan-16	522113	TIMKEN	9-Feb-16
506655	SUDARSCHEM	30-Jan-16	511742	CHOKSEC	10-Feb-16
521228	TATIAGLOB	30-Jan-16	500660	GLAXO	10-Feb-16
539488	TFLL	30-Jan-16	509162	INDAG	10-Feb-16
524038	VENLONENT	30-Jan-16	530669	PRESOFI	10-Feb-16
538873	WINYCOMM	30-Jan-16	524542	SUKHJITS	10-Feb-16
526831	NAINAMS	31-Jan-16	532097	MUKANDENGG	11-Feb-16
514045	BSL	1-Feb-16	500338	PRISMCEM	11-Feb-16
532349	TCI	1-Feb-16	514440	BPTX	12-Feb-16
533393	TCIDEVELOP	1-Feb-16	530171	DAULAT	12-Feb-16
500280	CENTENKA	2-Feb-16	532425	GULCHEM	12-Feb-16
500266	MAHSCOOTER	2-Feb-16	500202	INDLEASE	12-Feb-16
532978	BAJAJFINSV	3-Feb-16	500520	M&M	12-Feb-16
500034	BAJFINANCE	3-Feb-16	531213	MANAPPURAM	12-Feb-16
506943	JBCHEPHARM	3-Feb-16	501343	MOTOGENFIN	12-Feb-16
526947	LAOPALA	3-Feb-16	500790	NESTLEIND	12-Feb-16
500252	LAXMIMACH	3-Feb-16	523642	PIIND	12-Feb-16
532915	RELIGARE	3-Feb-16	511644	OMEGAIN	13-Feb-16
500387	SHREECEM	3-Feb-16	532756	MAHINDCIE	22-Feb-16
512527	SUPER	3-Feb-16	520113	VESUVIUS	26-Feb-16
507747	TTKHEALTH	3-Feb-16			

Economic Calendar

Country	Monday 11th Jan 16	Tuesday 12th Jan 16	Wednesday 13th Jan 16	Thursday 14th Jan 16	Friday 15th Jan 16
US	Core Retail Sales m/m , PPI m/m , Retail Sales m/m , Core PPI m/m , Prelim UoM Consumer Sentiment , Business Inventories m/m , Prelim UoM Inflation Expectations	JOLTS Job Openings , FOMC Member Fischer Speaks , NFIB Small Business Index .	Crude Oil Inventories , 10-y Bond Auction , Federal Budget Balance .	Unemployment Claims , FOMC Member Bullard Speaks , Import Prices m/m .	Core Retail Sales m/m , PPI m/m , Retail Sales m/m , Core PPI m/m , Empire State Manufacturing Index, Prelim UoM Consumer Sentiment .
UK/EURO ZONE	German Final CPI m/m , German WPI m/m , French CPI m/m , Construction Output m/m , Targeted LTRO .	Manufacturing Production m/m , Industrial Production m/m .	Industrial Production m/m , French CPI m/m , German 10-y Bond Auction .	MPC Official Bank Rate Votes , Monetary Policy Summary , Official Bank Rate , Asset Purchase Facility , MPC Asset Purchase Facility Votes .	ECOFIN Meetings , Trade Balance , BOE Credit Conditions Survey.
INDIA		IIP Data		WPI Data	



SEBI Registered Portfolio Manager

(Regn. No. : INP 000004011)

Narnolia Securities Ltd.

Narnolia Research Lab

Stellar IT Park | 5th Floor | Office Space No. 6 | Tower-II/nd Plot No. C-25 | Sector-62 | Noida | Ph : 0120-4215110

Central Strategy Desk - Kolkata

124 | 1st Floor | 7/1 Lords Sinha Road | Kolkata - 71
Ph : 033-22821500 | M : 93347 14418, 98302 69810