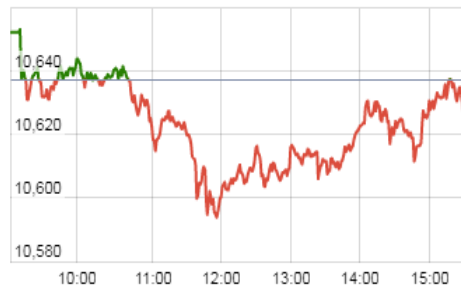


KEY LEVELS

Support 1 : 10520
Support 1 : 10404

Resistance 1 : 10760

Nifty Intraday Chart



Market Outlook

After opening on a subdued note, Nifty fell to make an intraday low of 10592.85 yesterday. However the index was unable to maintain there and some pullback to 10640 was witnessed towards the afternoon session. At the end of the day Nifty closed at 10632.20. It had a net loss of 0.05% over the previous trading day's close. The midcap and small cap indices also moved in line with the benchmark index and closed the day near flat.

On the sectoral front, some buying interest was witnessed in Realty and Information Technology stocks while Banking and Auto indices have shown some weakness. The breadth of the market was negative and about three shares declined for two shares advanced at NSE.

Nifty is trading close to top-end of its existing range. Though the way selective small-cap stocks are showing the intra-day rise and Nifty put options are getting written, it certainly suggests that investors sentiment is highly positive. Not only in India but across global markets there is low volatility (all-time low average VIX) and significant return. US Dow Jones has continuously gone up in last 10 months.

Though there does not yet appear any threat to this on-going rally in terms of market technicals, it's worth to remember that stock market can never be a one-way street. So it would be prudent to continue trading long but with trailing stop loss. Post-Monday gap up rally, Nifty trend reversal level changes to 10,404. Aluminium and Natural Gas fell sharply last weekend, it would be advisable to keep an eye on global events.

Quote of the Day : "The best protection against inflation is your own earning power. If you are the best teacher, you will command earning power and get your share of the national economic pie, regardless of the value of the currency. The second best investment is in a good company." **Warren Buffett**

Market

Market	Value	% Change
Morning Traded Market		
SGX NIFTY	10,624.00	-0.13%
NIKKIE	23,678.65	-0.46%
HANG SENG	31,028.94	-0.14%
Yesterday Closing Market		
Sensex	34,433.07	-0.03%
Nifty	10,632.20	-0.05%
DOW	25,369.13	-0.07%
NASDAQ	7,153.57	-0.14%
CAC	5,504.68	-0.35%
DAX	13,281.34	-0.78%
FTSE	7,748.51	0.23%
EW ALL SHARE	20,408.17	0.01%

% Change in 1 day

Commodity Price (Yesterday Closing)

Commodity/Currencies	Value	% Change
GOLD	29325.00	0.58%
SILVER	38975.00	0.33%
CRUDEOIL	69.14	0.07%
NATURALGAS	185.60	1.31%
DOLLAR/RS.	63.59	-0.19%
EURO/RS.	76.30	0.14%
POUND/RS.	86.15	-0.11%

% Change in 1 day

Institutional Turnover

FII			
Investor	Buy(Cr.)	Sale(Cr.)	Net(Cr.)
10-Jan-18	3797	4369	(572)
Jan-18	29406	27279	2127
2018	29406	27279	2127
DII			
Investor	Buy(Cr.)	Sale(Cr.)	Net(Cr.)
10-Jan-18	3943	3343	600
Jan-18	24340	24959	(620)
2018	24340	24959	(620)

Event Today

Bonus Issue

BILENERGY (Ratio : 1:1)
VKJINFRA (Ratio : 1:3)
(Exdate : 11-Jan-18)

Spin Off

ORIENTPPR
(Exdate : 11-Jan-18)

Buy Back of Shares

SWARAJENG
TIIL
(Exdate : 11-Jan-18)

Result

TCS , BAJAJCORP , INDUSINDBK,
SHREECEM, HMVL

OIL

"BUY"

11th Jan 2018

Oil India Limited is an integrated upstream petroleum company. It is engaged in the business of exploration, development, production and transportation of crude oil and natural gas. The company had reported muted growth from the past few quarters due to lower crude prices, which translated in to lower realization for the company. But now macro scenarios are changing in favor of the company. Rising crude oil and natural gas prices will help the company to explore higher volumes from offshore fields which are relatively costlier than onshore fields. We expect crude oil prices to remain in the range of USD 55-58 per barrel going forward. The company is ramping up the crude production from Baghjan, Dirok, Ningru and Taas oilfields which will improve the crude volume by 6% to 3.6 MMT in FY19E from current level of 3.4 MMT. We expect ROE to improve by 450bps to 9.5% in FY19E. Oil India is presently trading at 0.9 x FY19e Book value(BV) (Standalone). Considering better growth going ahead we are positive on this stock and recommend "BUY" with the target price of Rs.440(1.1x FY19e BV).

WABAG

"BUY"

11th Jan 2018

VA Tech WABAG is one of the world's leading companies in water treatment field with presence across 20 plus countries. Trade receivable was higher at the end of the Q2FY18 by Rs.300 Cr from March 2017 level due to delay in payment on account of GST implementation. So we assume working capital will normalize going ahead. Execution of the current projects under construction is progressing good and we expect steady execution. Profitability will improve on account of better margin orders from Middle East and Africa cluster. We expect that the margin in FY18 will remain at the same level and gradually improve from FY19 onwards. We estimate 12% and 38% CAGR growth in revenue and earnings over FY17-20. We value WABAG at 2.78x of FY20E book value per share and initiate "BUY" rating on the stock with target price Rs.720

*For details, refer to our daily report- *India Equity Analytics***Top News**

>> **Simplex Infrastructure Mgt Guideline** : Company said that margins are stable at about Rs 12 percent. FDI in construction, Mgt said 100 percent foreign direct investment (FDI) will come at the level of equity and technology because construction is basically a local business.

On growth front, Company said revenue growth will be 8-10 percent. It has been subdued because of payment cycle being longer, which is now improving and that is paving way for further increase in revenue growth for the next year.

>> **JMC Projects Guideline** : The government plans 35000 Kilometers of roads at an annual outlay of Rs 5.3 lakh crore over next 3-4 years, which will increase the amount of roads that will be bid by NHAI.

The current orderbook stands at Rs 7000 crore and in the last eight months they have declared orders worth Rs 2000 crore, adding that their L1 position is at Rs 1200 crore.

By the year-end, orderbook is expected to be around Rs 7500 crore plus compared to the Rs 6500 crore they started the year with

they expect growth to be around 20 percent and around 15 percent for the next year as of now in FY18.

Breaking up the orderbook of Rs 7000 crore, Company said 75 percent of it is buildings and 25 percent is infrastructure. The orderbook ratio of private to government stands at 60:40.

With regards to debt, Company said their standalone debt is at Rs 700 crore and consolidated debt (including build-operate-transfer BOT) projects it is around Rs 2000 crore. The company has been able to reduce the interest rates on 3 out of 4 project.

The traffic growth in BOT projects has been good .Tthe 4 projects growth has been to the tune of 7-8 percent.

>> **Balasure Alloys** will acquire 70 percent of Zimbabwe Alloys. The company will acquire either by itself and/or through its nominees and affiliates, 70 percent shares of Zimbabwe Alloys (ZAL).

ZAL holds 19,780 hectares of mining areas in different parts of Zimbabwe, which has proven resources of 72.25 million tonnes of chrome ore.

Zimbabwe Alloys Chrome is a wholly owned subsidiary of ZAL has a ferro chrome plant.

The scheme is subject to fulfilment of certain conditions precedent contained in the scheme of arrangement.

>> **Sadbhav Engineering Mgt Guideline** : Company signed concession agreement for all projects except Jodhpur project. However, Company will sign Jodhpur concession soon over next 20-30 days.

Company have bagged Jodhpur Hybrid Annuity Model (HAM) order worth Rs 1,069 crore in Q3.

The current order book is at Rs 4,000 crore . Therefore ,Company is on track to meet order inflow guidance of Rs 6,000-7,000 crore.

Company have bid for additional orders worth Rs 8,000 crore.

Company see a lot of engineering, procurement and construction (EPC) bids being tendered by National Highways Authority of India (NHAI) in Q4.

>> **Shalby** reported a good performance on the topline front in Q3 but margins and profit came in lower due to capex and new hospital beds coming on stream.

The topline has seen consistent growth of 30 percent.

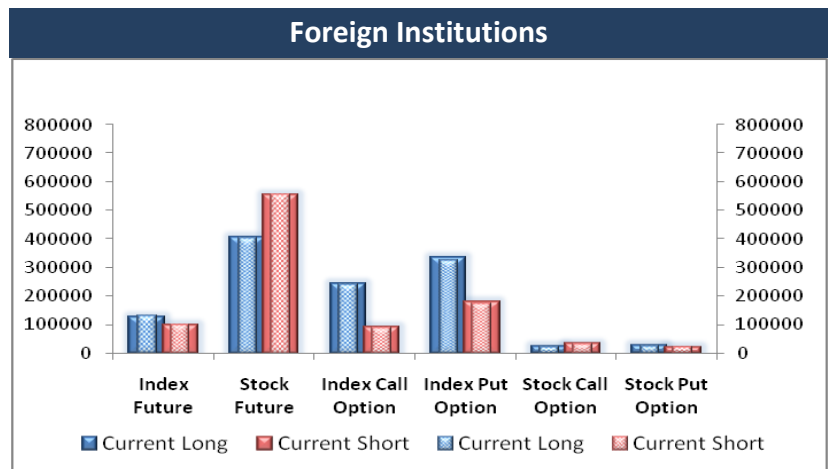
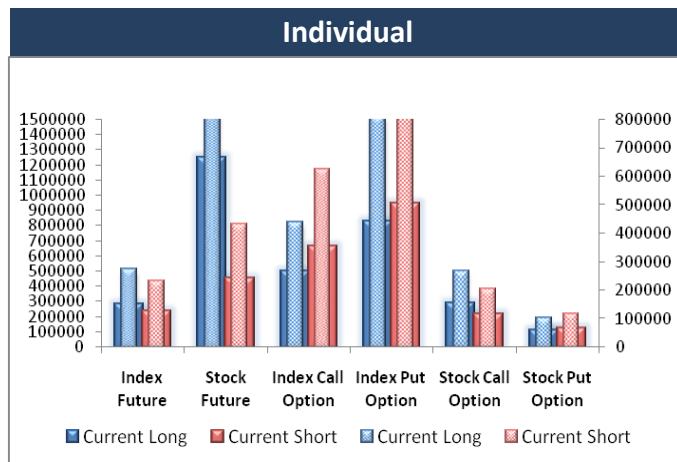
Company is seeing a constant increase in occupancy. However, average occupancy looking lower due to constant addition of hospitals.

Block Deal

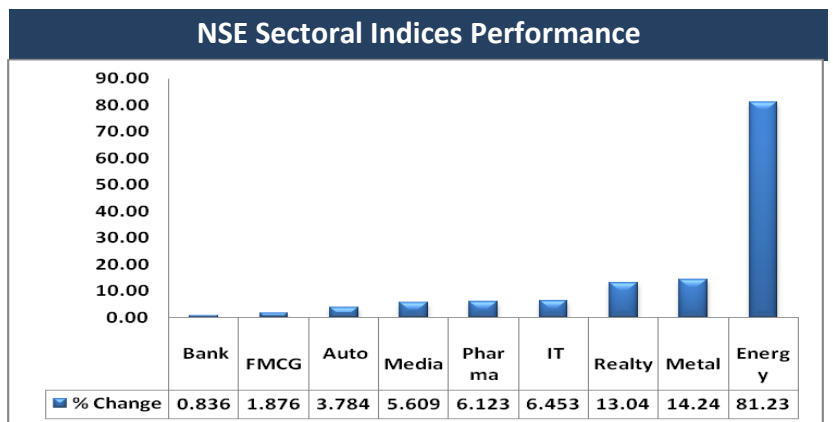
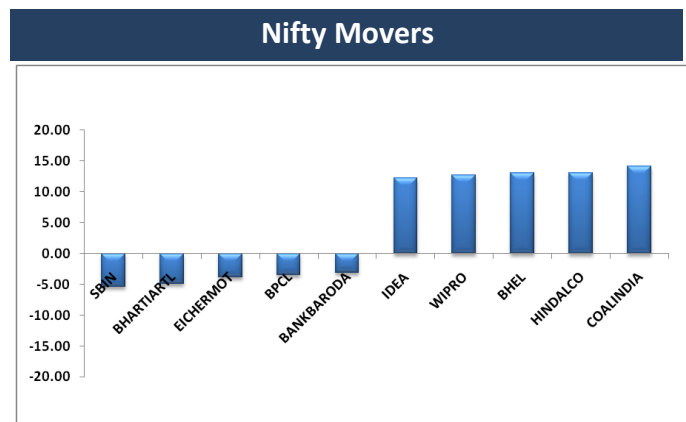
Exchange	Deal Date	Company	Client Name	Deal Type	Quantity	Price
NSE	10-Jan-18	ABAN	N.K. SECURITIES	BUY	570915	245
NSE	10-Jan-18	ABAN	OPG SECURITIES PVT. LTD.	BUY	495414	245
NSE	10-Jan-18	ABAN	PURITY TRADEMAX LLP	BUY	434960	244
NSE	10-Jan-18	ABAN	QE SECURITIES	BUY	337040	246
NSE	10-Jan-18	ABAN	WAY2WEALTH SECURITIES P LTD	BUY	426430	244
NSE	10-Jan-18	ASHIMASYN	ANKITA VISHAL SHAH	BUY	797513	36
NSE	10-Jan-18	CORALFINAC	ACHINTYA SECURITIES PRIVATE LIMITED	BUY	697460	47
NSE	10-Jan-18	CORALFINAC	LIMITED HANS METALS	BUY	768080	45
NSE	10-Jan-18	DOLPHINOFF	DEVISHA DHARMENDRA VYAS (DEVISHA Y UPADHYAY)	BUY	145722	146
NSE	10-Jan-18	DOLPHINOFF	GENUINE STOCK BROKERS PVT LTD	BUY	85227	146
NSE	10-Jan-18	DOLPHINOFF	GRAVITON RESEARCH CAPITAL LLP	BUY	162908	145
NSE	10-Jan-18	DOLPHINOFF	MAHAVEER EQUIBIZ	BUY	113452	145
NSE	10-Jan-18	DOLPHINOFF	N.K. SECURITIES	BUY	97708	146
NSE	10-Jan-18	DOLPHINOFF	PURITY TRADEMAX LLP	BUY	111807	145
NSE	10-Jan-18	GOACARBON	N.K. SECURITIES	BUY	59333	1126
NSE	10-Jan-18	GUJNRECOKE	BP FINTRADE PRIVATE LIMITED	BUY	10000050	2
NSE	10-Jan-18	JETAIRWAYS	CROSSLAND TRADING CO	BUY	651706	853
NSE	10-Jan-18	LINCOLN	AMBE SECURITIES PRIVATE LIMITED	BUY	202046	245
NSE	10-Jan-18	LINCOLN	KRYPTON INVESTMENT CONSULTANCY PRIVATE LIMITED	BUY	150000	231
NSE	10-Jan-18	MOHITIND	AJAY NATHWANI	BUY	215353	53
NSE	10-Jan-18	MOKSH	GUINNESS SECURITIES LIMITED	BUY	6000	46
NSE	10-Jan-18	MOSERBAER	ADROIT FINANCIAL SERVICES PRIVATE LIMITED	BUY	1121605	7
NSE	10-Jan-18	MOSERBAER	INDUS PORTFOLIO (P) LTD	BUY	1435429	7
NSE	10-Jan-18	MPTODAY	SAGAR RAJESHBHAI JHAVERI	BUY	32000	169
NSE	10-Jan-18	ORCHIDPHAR	POLARIS BANYAN HOLDING PRIVATE LTD	BUY	529000	24
NSE	10-Jan-18	PINCON	BP FINTRADE PRIVATE LIMITED	BUY	256398	45
NSE	10-Jan-18	PRIMESECU	LTS INVESTMENT FUND LTD	BUY	150000	60
NSE	10-Jan-18	SDBL	EQ INDIA FUND	BUY	500000	197
NSE	10-Jan-18	SDBL	PORINJU V. VELIYATH	BUY	150000	198
NSE	10-Jan-18	TATASPONGE	WAY2WEALTH SECURITIES P LTD	BUY	85024	1175
NSE	10-Jan-18	TINPLATE	OPG SECURITIES PVT. LTD.	BUY	938403	304
NSE	10-Jan-18	WELSPUNIND	DSP BLACKROCK MUTUAL FUND - BALANCED FUND	BUY	7152682	73
NSE	10-Jan-18	WELSPUNIND	DSP BLACKROCK MUTUAL FUND - MICRO CAP FUND	BUY	16506190	73
NSE	10-Jan-18	WELSPUNIND	DSP BLACKROCK MUTUAL FUND - OPPORTUNITIES FUND	BUY	6800000	73
NSE	10-Jan-18	WELSPUNIND	DSP BLACKROCK MUTUAL FUND - TAX SAVER FUND	BUY	6785420	73
NSE	10-Jan-18	ABAN	N.K. SECURITIES	SELL	570915	245
NSE	10-Jan-18	ABAN	OPG SECURITIES PVT. LTD.	SELL	495414	245
NSE	10-Jan-18	ABAN	PURITY TRADEMAX LLP	SELL	434960	244
NSE	10-Jan-18	ABAN	QE SECURITIES	SELL	337040	246
NSE	10-Jan-18	ABAN	WAY2WEALTH SECURITIES P LTD	SELL	426430	244
NSE	10-Jan-18	ASHIMASYN	ANKITA VISHAL SHAH	SELL	708513	36
NSE	10-Jan-18	CORALFINAC	ACHINTYA SECURITIES PRIVATE LIMITED	SELL	697460	44
NSE	10-Jan-18	DOLPHINOFF	DEVISHA DHARMENDRA VYAS (DEVISHA Y UPADHYAY)	SELL	145722	146
NSE	10-Jan-18	DOLPHINOFF	GENUINE STOCK BROKERS PVT LTD	SELL	85227	146
NSE	10-Jan-18	DOLPHINOFF	GRAVITON RESEARCH CAPITAL LLP	SELL	162908	145
NSE	10-Jan-18	DOLPHINOFF	MAHAVEER EQUIBIZ	SELL	113452	146
NSE	10-Jan-18	DOLPHINOFF	N.K. SECURITIES	SELL	97708	146
NSE	10-Jan-18	DOLPHINOFF	PURITY TRADEMAX LLP	SELL	111807	145
NSE	10-Jan-18	GOACARBON	N.K. SECURITIES	SELL	59333	1126

NSE	10-Jan-18	GUJNRECOKE	BP FINTRADE PRIVATE LIMITED	SELL	2733271	2
NSE	10-Jan-18	HILTON	SONY SEBASTIAN	SELL	71900	41
NSE	10-Jan-18	HITECH	BRIJAL NIKUNJ PATEL	SELL	60000	372
NSE	10-Jan-18	JETAIRWAYS	CROSSLAND TRADING CO	SELL	651706	853
NSE	10-Jan-18	JINDRILL	INDICO PREFAB AND ALLIED INDUSTRIES LLP	SELL	200000	225
NSE	10-Jan-18	LASA	VIVEK BHIMSARIA NRE PIS A/C 50100189885591	SELL	122118	173
NSE	10-Jan-18	LINCOLN	AMBE SECURITIES PRIVATE LIMITED	SELL	202046	245
NSE	10-Jan-18	LINCOLN	KRYPTON INVESTMENT CONSULTANCY PRIVATE LIMITED	SELL	150000	244
NSE	10-Jan-18	MOHITIND	AJAY NATHWANI	SELL	215353	54
NSE	10-Jan-18	MOKSH	GUINNESS SECURITIES LIMITED	SELL	165000	46
NSE	10-Jan-18	MOSERBAER	ADROIT FINANCIAL SERVICES PRIVATE LIMITED	SELL	1381242	7
NSE	10-Jan-18	MOSERBAER	INDUS PORTFOLIO (P) LTD	SELL	1435429	7
NSE	10-Jan-18	MPTODAY	ROMY BANSAL	SELL	32000	169
NSE	10-Jan-18	PINCON	BP FINTRADE PRIVATE LIMITED	SELL	284137	46
NSE	10-Jan-18	SNOWMAN	NORWEST VENTURE PARTNERS VII-A MAURITIUS	SELL	890000	64
NSE	10-Jan-18	STAMPEDE	ROHIT SAHAI HUF	SELL	1400000	15
NSE	10-Jan-18	TATASPONGE	WAY2WEALTH SECURITIES P LTD	SELL	85024	1175
NSE	10-Jan-18	TCIFINANCE	ANMOL SHARE TRADERS LIMITED	SELL	106931	32
NSE	10-Jan-18	TINPLATE	OPG SECURITIES PVT. LTD.	SELL	938403	304
NSE	10-Jan-18	UJIVAN	CDC GROUP PLC	SELL	1100000	405
NSE	10-Jan-18	WELSPUNIND	MGN AGRO PROPERTIES PRIVATE LIMITED	SELL	48096381	73

F&O OPEN INTEREST (Number of Contracts)



MARKET MOVERS (1 MONTH CHANGE)



Result Calendar Q3FY18

Bse Code	Company Name	Date	Bse Code	Company Name	Date
540776	SPAISA	11-Jan-18	524661	WELCURE	15-Jan-18
531247	ALPHA	11-Jan-18	533287	ZEELEARN	15-Jan-18
533229	BAJAJCORP	11-Jan-18	512247	ASHCAP	16-Jan-18
533217	HMVL	11-Jan-18	500215	ATFL	16-Jan-18
532187	INDUSINDBK	11-Jan-18	533137	DEN	16-Jan-18
500387	SHREECEM	11-Jan-18	531196	GAGANPO	16-Jan-18
540653	SINTEXPLAST	11-Jan-18	531111	GOTHIPL	16-Jan-18
531638	SURAJLTD	11-Jan-18	540716	ICICIGI	16-Jan-18
521022	SURYAJYOTI	11-Jan-18	539449	IGC	16-Jan-18
532540	TCS	11-Jan-18	520066	JAYBARMARU	16-Jan-18
517498	WEBELSOLAR	11-Jan-18	532468	KAMAHOLD	16-Jan-18
532628	3IINFOTECH	12-Jan-18	500262	MAFATLAFIN	16-Jan-18
512433	ASUTENT	12-Jan-18	534091	MCX	16-Jan-18
532155	GAIL	12-Jan-18	540767	RNAM	16-Jan-18
532662	HTMEDIA	12-Jan-18	539450	SHK	16-Jan-18
539149	ICSL	12-Jan-18	512257	SVARTCORP	16-Jan-18
509069	INFOMEDIA	12-Jan-18	510245	SWASTIVI	16-Jan-18
500209	INFY	12-Jan-18	533157	SYNCOM	16-Jan-18
532652	KTKBANK	12-Jan-18	531390	UPSURGE	16-Jan-18
508924	NORTHPR	12-Jan-18	530109	VANTAGE	16-Jan-18
500329	PENTAGRAPH	12-Jan-18	533096	ADANIPOWER	17-Jan-18
523445	RIIL	12-Jan-18	539254	ADANITRANS	17-Jan-18
540181	SALEM	12-Jan-18	500696	HINDUNILVR	17-Jan-18
502742	SINTEX	12-Jan-18	533676	INDOTHAI	17-Jan-18
507753	TGVSL	12-Jan-18	534816	INFRATEL	17-Jan-18
517228	TRENDELEC	12-Jan-18	532926	JYOTHLAB	17-Jan-18
500945	VALUEIND	12-Jan-18	505283	KIRLPNU	17-Jan-18
511389	VIDEOIND	12-Jan-18	532819	MINDTREE	17-Jan-18
506597	AMAL	13-Jan-18	524570	PODARPIGQ	17-Jan-18
512404	BENGALS	13-Jan-18	530289	SPCAPIT	17-Jan-18
531306	DHPIND	13-Jan-18	523756	SREINFRA	17-Jan-18
531471	DUKEOFS	13-Jan-18	532374	STRTECH	17-Jan-18
511766	MUTHTFN	13-Jan-18	513010	TATASPONGE	17-Jan-18
512522	NEPTEXP	13-Jan-18	500412	TIRUMALCHM	17-Jan-18
512011	TEATIME	13-Jan-18	505537	ZEEL	17-Jan-18
500052	BEPL	14-Jan-18	512599	ADANIENT	18-Jan-18
505665	ABCBEARS	15-Jan-18	532921	ADANIPOINTS	18-Jan-18
524663	BIBCL	15-Jan-18	532454	BHARTIARTL	18-Jan-18
532848	DELTACORP	15-Jan-18	501833	CHOWGULSTM	18-Jan-18
500469	FEDERALBNK	15-Jan-18	532175	CYIENT	18-Jan-18
539552	FMEC	15-Jan-18	533151	DBCORP	18-Jan-18
533213	FRONTSEC	15-Jan-18	506401	DEEPAKNI	18-Jan-18
532726	GALLANTT	15-Jan-18	500188	HINDZINC	18-Jan-18
533265	GALLISPAT	15-Jan-18	500243	KIRLOSIND	18-Jan-18
513343	GRANDFONRY	15-Jan-18	532732	KKCL	18-Jan-18
540565	INDIGRID	15-Jan-18	523704	MASTEK	18-Jan-18
526622	MFLINDIA	15-Jan-18	540204	NIDL	18-Jan-18

Earning Estimate Q3FY18

BSE CODE	NSE CODE	Sales Rs Cr	Sales YoY	Pat Rs Cr	PAT YoY
11-Jan-18	SHREECEM	2276	23.50	243	2.40
11-Jan-18	TCS	31029	4.40	6393	(5.70)
11-Jan-18	INDUSINDBK	1921	21.70	942	25.50
12-Jan-18	HTMEDIA	659	1.40	60	(34.60)
12-Jan-18	GAIL	13184	8.90	1134	15.30
12-Jan-18	INFY	17817	3.20	3526	(4.90)

Economic Calendar

Country	Monday 8th Jan 18	Tuesday 9th Jan 18	Wednesday 10th Jan 18	Thursday 11th Jan 18	Friday 12th Jan 18
US		NFIB Small Business Index , JOLTS Job Openings , IBD/TIPP Economic Optimism , Consumer Credit m/m	Import Prices m/m , Final Wholesale Inventories m/m , Crude Oil Inventories , 10-y Bond Auction	PPI m/m, Unemployment Claims , Core PPI m/m , Natural Gas Storage , 30-y Bond Auction , Federal Budget Balance	CPI m/m , Core CPI m/m , Core Retail Sales m/m , Retail Sales m/m , Prelim UoM Consumer Sentiment , Business Inventories m/m , Prelim UoM Inflation Expectations
UK/EURO ZONE	Halifax HPI m/m , Italian Retail Sales m/m , Sentix Investor Confidence, Retail Sales m/m , BRC Retail Sales Monitor y/y	Unemployment Rate	French Industrial Production m/m , French Trade Balance, Italian Industrial Production m/m , Manufacturing Production m/m , Goods Trade Balance	BOE Credit Conditions Survey , Industrial Production m/m , 10-y Bond Auction , ECB Monetary Policy Meeting Accounts	German WPI m/m , French Final CPI m/m
INDIA					IIPdata



Narnolia Securities Ltd

201 | 2nd Floor | Marble Arch Building | 236B-AJC Bose
Road | Kolkata-700 020 , Ph : 033-40501500

email: narnolia@narnolia.com,
website : www.narnolia.com

Risk Disclosure & Disclaimer: This report/message is for the personal information of the authorized recipient and does not construe to be any investment, legal or taxation advice to you. Narnolia Securities Ltd. (Hereinafter referred as NSL) is not soliciting any action based upon it. This report/message is not for public distribution and has been furnished to you solely for your information and should not be reproduced or redistributed to any other person in any form. The report/message is based upon publicly available information, findings of our research wing "East wind" & information that we consider reliable, but we do not represent that it is accurate or complete and we do not provide any express or implied warranty of any kind, and also these are subject to change without notice. The recipients of this report should rely on their own investigations, should use their own judgment for taking any investment decisions keeping in mind that past performance is not necessarily a guide to future performance & that the the value of any investment or income are subject to market and other risks. Further it will be safe to assume that NSL and /or its Group or associate Companies, their Directors, affiliates and/or employees may have interests/ positions, financial or otherwise, individually or otherwise in the recommended/mentioned securities/mutual funds/ model funds and other investment products which may be added or disposed including & other mentioned in this report/message.