

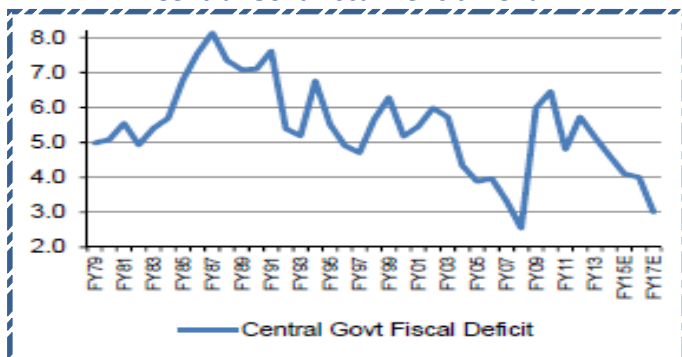
Quote of the Day

" When purchasing depressed stock in troubled companies, seek out the ones with the superior financial positions and avoid the ones with loads of bank debt." **Peter Lynch**

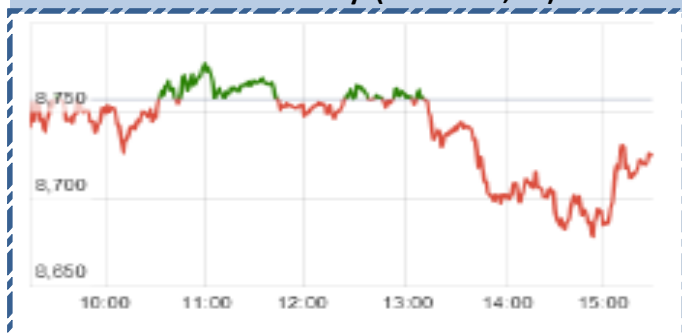
**SGX NIFTY : 8717.50
(38 Pt Down)**

Chart of the Day

Central Govt Fiscal Deficit Trend



Index Action-Nifty (10th Mar, 15)



Index

Contents	Page	Coverage
News	2	UPDATE
Economic Calendar	3	UPDATE

MARKET		
Name	Value	Change
Sensex	28709.87	(134.97)
Nifty	8712.02	(44.70)
DOW	18029.85	(17.73)
NASDAQ	4877.4	(65.04)
CAC	4881.95	(55.25)
DAX	11500.38	(81.73)
FTSE	6702.84	(173.63)
NIKKEI	18665.11	(125.44)
HANG SENG	23896.98	(226.07)
EW ALL SHARE	14749.32	(34.24)

INSTITUTIONAL TURNOVER			
FII			
Investor	Buy(Cr.)	Sale(Cr.)	Net(Cr.)
10th Mar	4292.22	5,040.35	(748.13)
Mar,15	35018.01	30,864.05	4153.96
2015	238793.74	2,17,287.84	21505.90
DII			
Investor	Buy(Cr.)	Sale(Cr.)	Net(Cr.)
10th Mar	1872.98	1,582.50	290.48
Mar,15	11635.18	11,680.19	(45.01)
2015	85421.57	91,636.03	(6214.46)

COMMODITY PRICE		
COMMODITY/CURRENCIES	Value	
GOLD	25916.00	↓
SILVER	35713.00	↓
CRUDEOIL	49.03	↓
COPPER	367.80	↓
NATURALGAS	172.20	↑
DOLLAR/RS.	62.76	↑
EURO/RS.	67.12	↑
POUND/RS.	94.53	↑

Narnolia Securities Ltd.

Markets Snapshot

Top Price Performers

Top Performers 1D	% Change	Top Performers 1W	% Change	Top Performers 1M	% Change
JUBLINDS	19.96	NITESHEST	53.62	WESTE	126.04
SHILPAMED	17.05	CINEPRO	47.31	LOGIXMICRO	103.91
SUBHKAM	17.03	SMPL	38.98	TWL	91.60
JINDALSWHL	15.20	REISIXTEN	38.10	BFINVEST	86.26
MIC	14.49	INDINFO	35.62	WANBURY	83.62

Worst Price Performers

Worst Performers 1D	% Change	Worst Performers 1W	% Change	Worst Performers 1M	% Change
WINSOMEDJ	(18.52)	WINSOMEDJ	(24.14)	STRAUSIND	(40.81)
JRG	(15.17)	PROVOGE	(22.14)	SCANPGEOM	(39.10)
PANCHMSTEL	(14.90)	BILPOWER	(21.54)	PRITHVI	(34.97)
PROVOGE	(11.91)	BRANDHOUSE	(21.21)	FARMAXIND	(32.26)
IKFTECH	(10.81)	DIAPOWER	(19.77)	KGIND	(31.52)

Top News :

- **Technofab Engg Mgt Guideline** : Company is looking to venture into railways. The company recently started bidding for railway projects with electrification vertical being the key focus . The company has placed bids for three-four projects in railway electrification space though it is yet to see any meaningful pick up in this bidding. The engineering company is eyeing close to Rs 200 crore ordering opportunity in the railway sector. The company plans to diversify its market in terms of sectors and geographies. Around 40-50 percent of its revenue comes from the international segment .

- **Siti Cable Network** has raised Rs 221 crore via qualified institutional placement (QIP). QIP is a part of earlier share holder approval of USD 100 million fund raising. The remaining amount will be raised in the second tranche through QIP.

- **Monnet Ispat** its power subsidiary won Utkal C coal block on the fifth day of the second phase of coal block auctions. Monnet Power Company bagged the Utkal C mine in Odisha on Monday for an estimated Rs 9,537.22 crore. The Utkal C was bagged by Monnet Power Company with a closing bid of Rs 770 a tonne. Utkal C has an extractable reserve of 123.86 million tonnes (MT). It was previously allotted to Utkal Coal.

- **MPHASIS Clarification** : News regarding " "Mphasis to Hive Off Domestic BPO Biz Into A Separate Arm" Company wish to mention that such information is not based on any disclosure made by the Company and is based on market rumours. As mentioned in our earlier responses, we would not like to respond on market rumours. Company informed that there has been no negotiations taking place on Sale of Domestic BPO Business.

- **Supreme court** agrees with Natco and denies petition for certiorari on generic tamiflu patent . The denial was issued on March 9, 2015, in the case of Gilead Sciences Inc etal. v. Natco Pharma Limited . Case remains pending in the district of New Jersey where the validity of U.S. patent no. 5,763,483 continues to be challenged

- **Noida Toll Bridge Company Ltd** has informed that Credit Analysis & Research Limited (CARE) has, in their annual review, revised the rating for the Company's Deep Discount Bonds (DDBs) from CARE AA- (Double A Minus) to CARE AA (Double A).

- **Five public sector undertakings (PSUs)** will be closed down by the government, which has included some of the best known state-run enterprises like Air India, MTNL and Hindustan Shipyard, in the list of 65 sick PSUs, Lok Sabha was informed .

- **Switzerland's unemployment rate** remained unchanged at a seasonally adjusted 3.2%, from 3.2% in the preceding month whose figure was revised up from 3.1%. Analysts had expected Switzerland's unemployment rate to rise to 3.2% last month.

- **National Bureau of Statistics of China** said that Chinese PPI fell to an annual rate of -4.8%, from -4.3% in the preceding month. Analysts had expected Chinese PPI to remain unchanged at -4.3% last month.

- **Statistics Norway said that Norwegian CPI** rose to a seasonally adjusted 0.4%, from -0.1% in the preceding month. Analysts had expected Norwegian CPI to rise 0.7% last month.

- **French Industrial Production** rose to 0.4%, from 1.4% in the preceding month whose figure was revised down from 1.5%. Analysts had expected French Industrial Production to fall -0.3% last month.

- **India's current account deficit (CAD)** narrowed to USD 8.2 billion or 1.6 percent of GDP in Q3 of 2014-15 from USD 10.1 billion or 2 percent of GDP in Q2.

Economic Calendar

	Monday 9-Mar-15	Tuesday 10-Mar-15	Wednesday 11-Mar-15	Thursday 12-Mar-15	Friday 13-Mar-15
US	Crude Oil Inventories .	Core Retail Sales m/m ,Retail Sales m/m , Unemployment Claims , Import Prices m/m , Business Inventories m/m Natural Gas Storage .	PPI m/m ,Core PPI m/m , Prelim UoM Consumer Sentiment ,Crude Oil Inventories .	Core Retail Sales m/m , Retail Sales m/m , Unemployment Claims Import Prices m/m ,Business Inventories m/m .	PPI m/m ,Core PPI m/m ,Prelim UoM Consumer Sentiment , Prelim UoM Inflation Expectations .
UK/EURO ZONE	Manufacturing Production m/m , Italian Industrial Production m/m , NIESR GDP Estimate .	Trade Balance , French CPI m/m , French Final Non-Farm Payrolls q/q , Industrial Production m/m .	German Final CPI m/m , Manufacturing Production m/m .	Trade Balance .	
INDIA				IIP Data , CPI Data	



Narnolia Securities Ltd

124, 1st floor 7/ 1, Lords Sinha Road Kolkata 700071, Ph 033-22821251 Toll Free no : 1-800-345-4000

email: research@narnolia.com,

website : www.narnolia.com

Risk Disclosure & Disclaimer: This report/message is for the personal information of the authorized recipient and does not construe to be any investment, legal or taxation advice to you. Narnolia Securities Ltd. (Hereinafter referred as NSL) is not soliciting any action based upon it. This report/message is not for public distribution and has been furnished to you solely for your information and should not be reproduced or redistributed to any other person in any form. The report/message is based upon publicly available information, findings of our research wing "East wind" & information that we consider reliable, but we do not represent that it is accurate or complete and we do not provide any express or implied warranty of any kind, and also these are subject to change without notice. The recipients of this report should rely on their own investigations, should use their own judgment for taking any investment decisions keeping in mind that past performance is not necessarily a guide to future performance & that the the value of any investment or income are subject to market and other risks. Further it will be safe to assume that NSL and /or its Group or associate Companies, their Directors, affiliates and/or employees may have interests/ positions, financial or otherwise, individually or otherwise in the recommended/mentioned securities/mutual funds/ model funds and other investment products which may be added or disposed including & other mentioned in this report/message.