

SGX NIFTY : 7486 (1.5 Pt Down)

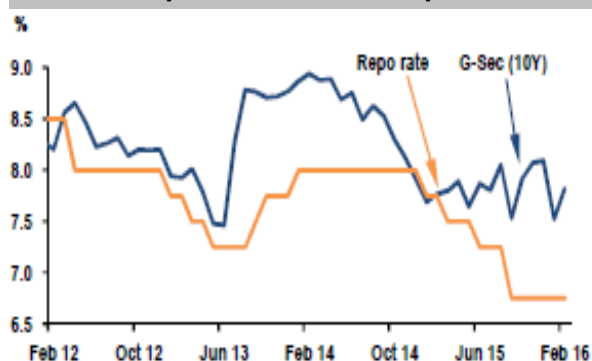
Quote of the Day

"You ought to be able to explain why you're taking the job you're taking, why you're making the investment you're making, or whatever it may be. And if it can't stand applying pencil to paper, you'd better think it through some more. And if you can't write an intelligent answer to those questions, don't do it."

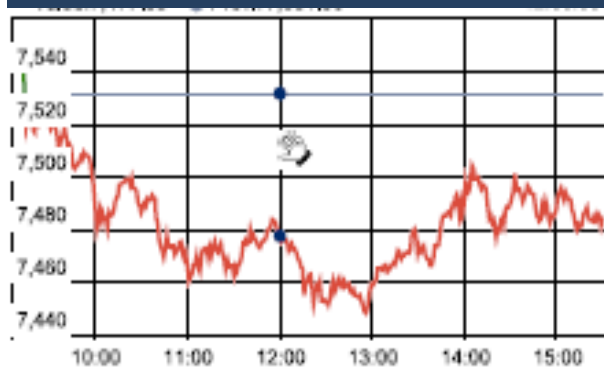
Warren Buffett

Chart of the Day

Policy Rate & Govt Security Trend



Index Action Nifty (10th Mar 16)



Index

| Contents | Page | Coverage |
|-------------------|------|----------|
| News | 2 | Update |
| Economic Calendar | 3 | Update |

Market

| Name | Value | Change |
|--------------|-----------|----------|
| Sensex | 24,623.34 | (170.62) |
| Nifty | 7486.15 | (45.65) |
| DOW | 16,639.97 | (57.32) |
| NASDAQ | 4,662.16 | (12.22) |
| CAC | 4,350.35 | (75.30) |
| DAX | 9,498.10 | (224.95) |
| FTSE | 6,036.70 | (109.62) |
| NIKKEI | 16,705.55 | (146.80) |
| HANG SENG | 20,016.60 | 32.18 |
| EW ALL SHARE | 12905.53 | (56.78) |

Instituional Turnover

FII

| Investor | Buy(Cr.) | Sale(Cr.) | Net(Cr.) |
|-----------|-----------|-----------|------------|
| 10-Mar-16 | 4727.42 | 3664.31 | 1063.11 |
| Mar,16 | 34429.58 | 26866.47 | 7563.11 |
| 2016 | 177567.04 | 196216.13 | (18649.09) |

DII

| Investor | Buy(Cr.) | Sale(Cr.) | Net(Cr.) |
|-----------|----------|-----------|-----------|
| 10-Mar-16 | 952.06 | 1550.09 | (598.03) |
| Mar,16 | 8997.36 | 13653.47 | (4656.11) |
| 2016 | 90912.33 | 71117.67 | 19794.66 |

Commodity Price

| Commodity/Currencies | Value | |
|----------------------|----------|---|
| GOLD | 29957.00 | ↑ |
| SILVER | 37703.00 | ↓ |
| CRUDEOIL | 36.91 | ↑ |
| COPPER | 333.30 | ↑ |
| NATURALGAS | 119.70 | ↑ |
| DOLLAR/RS. | 67.07 | ↓ |
| EURO/RS. | 75.08 | ↓ |
| POUND/RS. | 95.83 | ↓ |

Market Snapshot

Top Price Performers

| Top Performers 1D | % Change | Top Performers 1W | % Change | Top Performers 1M | % Change |
|-------------------|----------|-------------------|----------|-------------------|----------|
| BIRLACOT | 25.00 | DWARKESH | 54.80 | RAMKY | 104.40 |
| INDORAMA | 19.59 | DALMIASUG | 53.02 | LLOYDMETAL | 91.07 |
| MUKTAARTS | 19.58 | RAJSREESUG | 46.78 | NETWORK | 64.11 |
| CALSREF | 16.67 | PRAKASHCON | 45.24 | ENERGYDEV | 47.55 |
| INDSWFTLAB | 16.00 | PIRLIFE | 42.30 | DALMIASUG | 43.89 |

| Worst Performers 1D | % Change | Worst Performers 1W | % Change | Worst Performers 1M | % Change |
|---------------------|----------|---------------------|----------|---------------------|----------|
| MINDTREE | (55.78) | MINDTREE | (53.48) | MINDTREE | (53.86) |
| INDINFO | (16.13) | AMTEKINDIA | (22.57) | PDUMJEPULP | (48.80) |
| JRG | (11.16) | JRG | (21.31) | TFL | (38.30) |
| PRIMESECU | (10.00) | PARABDRUGS | (16.88) | TREEHOUSE | (37.13) |
| SHRENUJ | (9.97) | RAIREKMOH | (16.21) | SMOBILITY | (36.14) |

Top News

- Medical devices industry** has strongly opposed the government's proposal to increase the import duty, saying it will increase healthcare costs for patients and hurt the Rs 50,000-crore industry. Customs duty on all medical devices has been increased by around 7.3 percent. It should have been lowered because majority of the medical devices (75 percent) are imported
- BHEL** has commissioned a 500-mw unit at Anpara-D thermal power plant in Uttar Pradesh. Bharat Heavy Electricals Ltd (BHEL) has achieved yet another landmark in the power development programme... by successfully commissioning the second 500-mw thermal unit at Anpara-D thermal power plant (TPP) in Sonbhadra district of Uttar Pradesh
- Persistent Systems Limited** and its wholly owned U.S. subsidiary Persistent Systems Inc. signed agreements to collaborate with International Business Machines Corporation (IBM) in the development and support of a suite of IBM products.
- BSNL is in preliminary discussions with the country's top operator **Bharti Airtel** for spectrum sharing in four circles and the deal is likely to be finalised by June. BSNL is looking at sharing spectrum in Rajasthan, UP (West), Bihar and Assam and has formed a committee to look into the feasibility aspect.
- Trent** acquired 6.91 percent equity stake of Fiora Services, subsidiary company, from Tata Investment Corporation in addition to its existing holding of 89.88 percent. Post acquisition, the company holds 96.79 percent of share capital of Fiora Services that provides business support services relating to accounting, merchandising, human resources, payroll etc.
- Greenply** has received permission from excise authorities to avail benefit of exemption and consequential refund of excise duty under Notification dated April 25, 2007 for a period of 10 years from July, 2015, in respect of company's plywood unit situated at Tizit (Nagaland)
- Power Grid Corporation** of India its board has approved a total investment of Rs 885 crore in projects to strengthen transmission and augment transformation capacity. The nod was given for transfer of entire equity held by Power Grid Corporation in Power System Operation Corporation Ltd (POSOCO) to the central government at the agreed purchase consideration.
- Hitachi Lift India**, a subsidiary of Tokyo-based Hitachi has bagged an order for 23 units of elevators from ITC for its upcoming deluxe hotel project ITC Kohinoor in Hyderabad. Out of 23, 8 units are 3.5m/sec high speed guest elevator, high speed elevator order, for Hitachi in southern India, Hitachi Elevator Asia Pte,
- Brazilian Retail Sales** fell to a seasonally adjusted -10.3%, from -7.2% in the preceding month whose figure was revised down from -7.1%. Analysts had expected Brazilian Retail Sales to fall to -8.4% last month.
- Israeli GDP** rose to a seasonally adjusted annual rate of 3.9%, from 2.4% in the preceding month whose figure was revised up from 2.1%. Analysts had expected Israeli GDP to rise 2.0% last month.
- U.S.API Weekly Gasoline Stock** rose to a seasonally adjusted -2.124M, from -2.200M in the preceding month. Analysts had expected U.S.API Weekly Gasoline Stock to rise to -1.500M last month.
- Canadian building permits** fell to a seasonally adjusted annual rate of -9.8%, from 7.7% in the preceding month whose figure was revised down from 11.3%. Analysts had expected Canadian building permits to fall to -2.5% last month
- German Industrial Production** rose to a seasonally adjusted annual rate of 3.3%, from -0.3% in the preceding month whose figure was revised up from -1.2%. Analysts had expected German Industrial Production to rise 0.5% last month.

Economic Calendar

| Country | Monday 7th Mar 16 | Tuesday 8th Mar 16 | Wednesday 9th Mar 16 | Thursday 10th Mar 16 | Friday 11th Mar 16 |
|--------------|---|---|--|---|--|
| US | FOMC Member Fischer Speaks, FOMC Member Brainard Speaks. | NFIB Small Business Index, | Crude Oil Inventories, 10-y Bond Auction, Wholesale Inventories m/m. | Unemployment Claims, Natural Gas Storage, 30-y Bond Auction, Federal Budget Balance. | Import Prices m/m, |
| UK/EURO ZONE | German Factory Orders m/m, Eurogroup Meetings, MPC Member Haldane Speaks. | BOE Gov Carney Speaks, ECOFIN Meetings. | Manufacturing Production m/m, Industrial Production m/m. | Minimum Bid Rate, ECB Press Conference, French Final Non-Farm Payrolls q/q, German Trade Balance. | Trade Balance, Construction Output m/m, Consumer Inflation Expectations. |
| INDIA | | | | | IIP Data |

Narnolia Research Lab

Stellar IT Park | 5th Floor | Office Space No. 6 | Tower-I/Ind Plot No. C-25 | Sector-62
| Noida | Ph : 0120-4215110

Central Strategy Desk - Kolkata

124 | 1st Floor | 7/1 Lords Sinha Road | Kolkata - 71
Ph : 033-22821500 | M : 93347 14418, 98302 69810