

SGX NIFTY : 7565 (16 Pt Down)

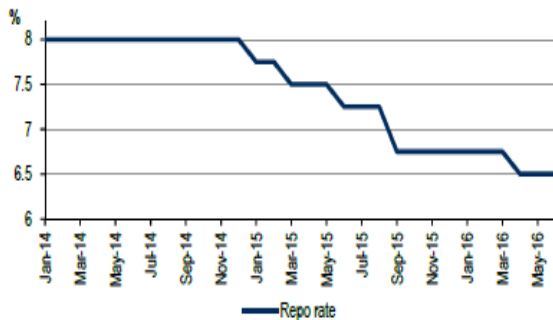
Quote of the Day

"Bargains are the holy grail of the true stockpicker. The fact that 10 to 30 percent of our net worth is lost in a market sell-off is of little consequence. We see the latest correction not as a disaster but as an opportunity to acquire more shares at low prices. This is how great fortunes are made over time."

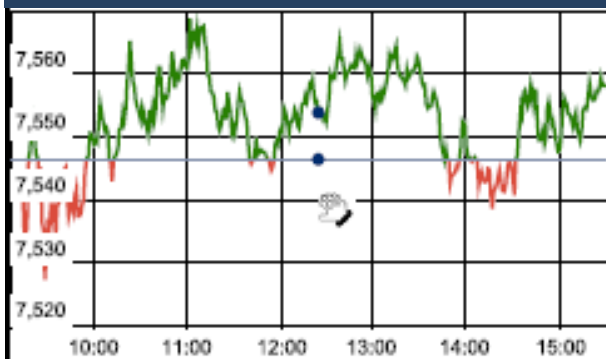
Peter Lynch

Chart of the Day

Repo Rate



Index Action Nifty (9th Apr 16)



Index

Contents	Page	Coverage
News	2	Update
Economic Calendar	3	Update

Market

Name	Value	Change
Sensex	24,673.84	(11.58)
Nifty	7555.20	8.75
DOW	17,602.30	120.81
NASDAQ	4,850.69	2.32
CAC	4,303.12	57.21
DAX	9,622.26	91.64
FTSE	6,204.41	6752.00
NIKKEI	15,599.98	(221.51)
HANG SENG	20,316.12	(54.18)
EW ALL SHARE	13164.49	36.86

Instituional Turnover

FII

Investor	Buy(Cr.)	Sale(Cr.)	Net(Cr.)
09-Apr-16	2609.08	2428.81	180.27
Mar,16	15337.63	15494.81	(157.18)
2016	266478.04	268645.91	(2167.87)

DII

Investor	Buy(Cr.)	Sale(Cr.)	Net(Cr.)
09-Apr-16	1235.43	1394.44	(159.01)
Mar,16	6966.76	7736.80	(770.04)
2016	120457.88	113669.05	6788.83

Commodity Price

Commodity/Currencies	Value	
GOLD	29131.00	↑
SILVER	36671.00	↑
CRUDEOIL	36.48	↑
COPPER	308.20	↑
NATURALGAS	133.90	↓
DOLLAR/RS.	66.47	↑
EURO/RS.	75.84	↓
POUND/RS.	93.98	↑

Market Snapshot



Top Price Performers

Top Performers 1D	% Change	Top Performers 1W	% Change	Top Performers 1M	% Change
BIRLACOT	25.00	KIRIINDUS	78.86	KIRIINDUS	126.29
LLOYDMETAL	20.00	UTTAMSUGAR	56.49	UTTAMSUGAR	119.73
SAGCEM	19.98	LLOYDMETAL	50.75	DHARSUGAR	104.70
SIMPLEX	19.96	RANASUG	43.42	THIRUSUGAR	98.41
PBAINFRA	19.94	CINEPRO	36.55	KAKATCEM	93.48

Worst Performers 1D	% Change	Worst Performers 1W	% Change	Worst Performers 1M	% Change
IPCALAB	(10.61)	VIVIMEDLAB	(79.17)	VIVIMEDLAB	(78.94)
SUJANAUNI	(10.34)	RAINBOWPAP	(24.60)	RAINBOWPAP	(61.37)
WEBELSOLAR	(10.00)	HINDCOMPOS	(16.11)	RICOHQ	(42.44)
SURAJLTD	(7.45)	RICOHQ	(14.46)	GLOBOFFS	(34.13)
HINDCOMPOS	(7.03)	ASHOKA	(14.45)	IVRCLINFRA	(33.16)

Top News

- **Bajaj Auto Ltd's** Austrian partner KTM AG are extending their partnership to Indonesia, the biggest motorcycle market in South East Asia . KTM, through its distribution network in the country, will sell the KTM-branded Duke and RC motorcycles (up to 400cc) which will be managed by Bajaj. The bikes are made by the KTM-Bajaj joint venture at the latter's factory in Chakan. Bajaj Auto sold 3.29 million units, of which 46% were exported, as against 41.6% in the previous year. The company's decade-long association with KTM has been a big success. It has helped Bajaj gain a toehold in advanced markets such as the US, Europe, Canada, Japan and Australia, as it ships "made in India" KTM bikes.

• Bharti Airtel

- Acquires 4G spectrum rights from Aircel for 8 circles for Rs 3,500 crore
- Acquires 4G spectrum for Tamil Nadu, Bihar, J&K, West Bengal, Assam circles
- Acquires 4G spectrum for North East Andhra Pradesh, Odisha, Chennai circles
- Right to use Andhra Pradesh, Odisha spectrum subject to revision of spectrum cap
- Company to become Pan-India 4G operator post spectrum acquisition from Aircel
- Acquires right to use 20 MHz, 2300 band 4G TD spectrum for 8 circles

- **ARSS Infrastructure Projects** announced that a work order amounting to Rs. 156.85 crore namely ""Budhapank-Salegaon Via- Rajathagarh - 3rd & 4th line: Execution of earthwork, minor bridges & other allied works (Km: 483.047 to Km. 398.166 i.e 2*85 =170 km approx" has been awarded in favour one of the Company's Joint Venture (JV) i.e. ARSS-SIPS (JV) by East Coast Railway,

- **Gammon India** has sold its civil engineering, procurement and construction (EPC) business to Thailand's GP Group in a deal pegged at Rs 250 crore. Company will invest in tranches of Rs 26 crore and Rs 224 crore into Gammon Retail Infra Pvt Ltd, the group's EPC arm.

• Tata Steel says

- Q4 hot metal production up 1.5 percent at 2.71 million tonnes (MT) (YoY)
- Q4 crude steel production up 4.9 percent at 2.56 MT (YoY)
- Q4 saleable steel production up 6.6 percent at 2.55 MT (YoY)
- Q4 sales up 12.9 percent at 2.72 MT (YoY)
- FY16 sales up 9 percent at 9.54 MT (YoY)
- FY16 saleable steel production up 6.9 percent at 9.7 MT (YoY)

- **Rupa & Company** entered into a definitive License Agreement with French Connection, whereby the said subsidiary has acquired the exclusive license from French Connection to develop, manufacture, marketing and sale of the innerwear and related products with the Brand name 'FCUK' in India

- **U.S. Wholesale Inventories fell** to a seasonally adjusted annual rate of -0.5%, from -0.2% in the preceding quarter whose figure was revised down from 0.2%. Analysts had expected U.S. Wholesale Inventories to fall -0.1% in the last quarter.

- **Canadian employment change** rose to a seasonally adjusted 40.6K, from -2.3K in the preceding month. Analysts had expected Canadian employment change to rise 10.0K last month.

- **Brazilian CPI** fell to 9.39%, from 10.36% in the preceding month. Analysts had expected Brazilian CPI to fall to 9.42% last month.

- U.K. trade balance rose to a seasonally adjusted -11.96B, from -12.16B in the preceding month whose figure was revised down from -10.29B. Analysts had expected U.K. trade balance to rise to -10.20B last month.

Economic Calendar

Country	Monday 4th April 16	Tuesday 5th April 16	Wednesday 6th April 16	Thursday 7th April 16	Friday 8th April 16
US	Labor Market Conditions Index m/m .	Trade Balance , Final Services PMI , ISM Non-Manufacturing PMI , IBD/TIPP Economic Optimism .	Crude Oil Inventories , FOMC Meeting Minutes,	Unemployment Claims , JOLTS Job Openings , Natural Gas Storage , Consumer Credit m/m , Treasury Currency Report .	NFIB Small Business Index , Wholesale Inventories m/m .
UK/EURO ZONE	Construction PMI , Spanish Unemployment Change , PPI m/m .	German Factory Orders m/m ,Spanish Services PMI , Italian Services PMI , French Final Services PMI , Services PMI , Retail Sales m/m .	Halifax HPI m/m ,Retail PMI , Housing Equity Withdrawal q/q , German Industrial Production m/m .	French Gov Budget Balance ,French Trade Balance , FPC Meeting Minutes .	Manufacturing Production m/m ,Goods Trade Balance , Industrial Production m/m , German Trade Balance , French Industrial Production m/m .
INDIA		RBI Credit Policy	Nikkei Services PMI		



(Regn. No. : INP 000004011)

Narnolia Securities Ltd.

Narnolia Research Lab

Stellar IT Park | 5th Floor | Office Space No. 6 | Tower-IIInd Plot No. C-25 | Sector-62 | Noida | Ph : 0120-4215110

Narnolia Securities Ltd.

201 | 2nd Floor | Marble Arch Building | 236B-AJC Bose Road Kolkata-700 020 Ph : 033-40501500
Email : narnolia@narnolia.com website :www.narnolia.com