

SGX NIFTY : 8140 (26 Pt Up)

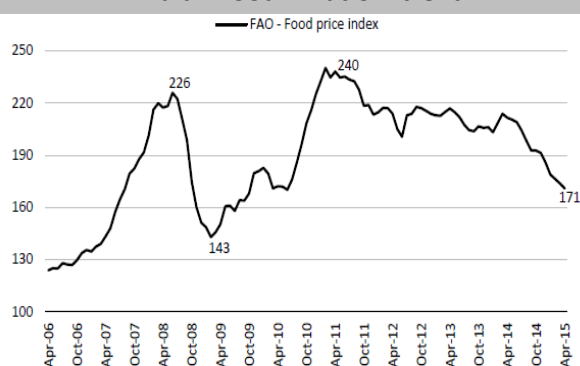
Quote of the Day

"The individual investor should act consistently as an investor and not as a speculator. This means that he should be able to justify every purchase he makes and each price he pays by impersonal, objective reasoning that satisfies him that he is getting more than his money's worth for his purchase."

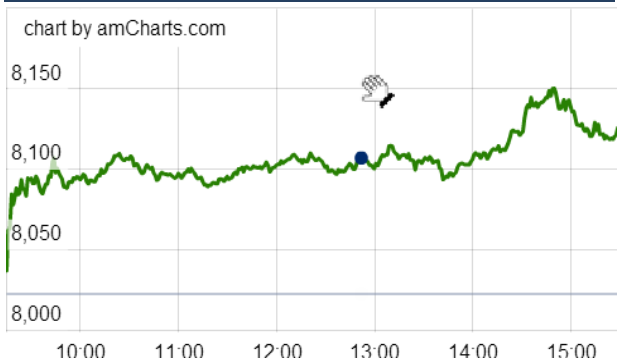
Benjamin Graham

Chart of the Day

Indian Food Inflation trend



Index Action Nifty (10th June 15)



Index

Contents	Page	Coverage
News	2	Update
Economic Calendar	4	Update

Market

Name	Value	Change
Sensex	26,840.50	359.25
Nifty	812445.00	102.05
DOW	18,000.40	236.36
NASDAQ	5,076.69	62.82
CAC	4,934.91	84.69
DAX	11,265.39	264.10
FTSE	6,830.10	76.47
NIKKIE	20,310.47	264.00
HANG SENG	26,931.60	243.65
EW ALL SHARE	13936.03	163.05

Instituional Turnover

FII

Investor	Buy(Cr.)	Sale(Cr.)	Net(Cr.)
10th June,15	3279.45	3761.56	(482.11)
June,15	31199.79	34322.71	(3122.92)
2015	505182.13	479409.25	25772.88

DII

Investor	Buy(Cr.)	Sale(Cr.)	Net(Cr.)
10th June,15	1911.20	1123.14	788.06
June,15	15228.14	10832.79	4395.35
2015	189989.91	174216.28	15773.63

Commodity Price

Commodity/Currencies	Value	
GOLD	26972.00	↑
SILVER	36720.00	↓
CRUDEOIL	61.40	↑
COPPER	387.50	↑
NATURALGAS	184.90	↑
DOLLAR/RS.	63.84	↓
EURO/RS.	72.10	↑
POUND/RS.	98.88	↑

Market Snapshot

Top Price Performers

Top Performers 1D	% Change	Top Performers 1W	% Change	Top Performers 1M	% Change
CHENNPETRO	20.00	JMDTELEFILM	92.46	INDTODE	169.73
VALECHAENG	20.00	INDTODE	52.23	JMDTELEFILM	92.46
TNPETRO	19.97	FULFORD	37.07	FULFORD	69.28
SHRGLTR	19.85	YBRANTDIGI	34.93	SANGAMIND	61.62
COMFINTE	19.10	SANDUMA	33.39	RUPA	54.55

Worst Price Performers

Worst Performers 1D	% Change	Worst Performers 1W	% Change	Worst Performers 1M	% Change
NAKODATEX	(18.84)	ELPROINTL	(82.30)	ROLATAN	(82.59)
AADHAARVEN	(16.67)	ROLATAN	(80.38)	ELPROINTL	(75.32)
PRADIP	(13.79)	INDINFO	(35.48)	INDINFO	(52.38)
TUNITEX	(12.50)	VIVIMEDLAB	(33.92)	PRITI	(47.17)
IMPEXFERRO	(11.68)	NAKODATEX	(28.21)	UNITECH	(45.71)

Top News

• **Spicejet Mgt Guideline** : The fleet will be increased significantly in the winter quarter, starting October. At this time Mgt has 20 operating Boeings and 15 operating Q400s. Mgt is getting into a weak season so the fleet will pretty much stand at the same number or maybe there will be a marginal increase . Mgt also said that any new investment into the company will be used to grow the business instead of funding losses.

• **TTK Prestige Mgt Guideline** : Company said growth in FY16 depends on market growth, monetary policy and monsoons. Market growth is still slow . Mgt is expecting increase in exports in the last two quarters of this year. Mgt also said that the company has not cut any advertisement cost and is future ready as far as capacity is concerned.

• **Emami Mgt Guideline** : Company acquired ayurvedic hair and scalp care brand Kesh King for Rs 1,651 crore. Company says the acquisition was funded via internal accruals and debt. Company expects the new business to be EPS accretive from late 2017-2018 and expects modest growth of 10-15 percent from the acquisition.

The company has been acquiring brands domestically and internationally to enter new product categories . Company says the company has new strategies to grow Kesh King's business and will look to expand the same in new regions.

• **Strides Arcolab** is seeking shareholders' nod to authorise its board to earmark up to Rs 2,000 crore for investment and loan purposes. The approval of shareholders is sought through a postal ballot. The e-voting will commence on June 10 and end on July 9 .

• **LIC** has picked up additional 2 percent stake in Yes Bank that would be worth about Rs 698 crore at current market prices. LIC picked up 83.91 lakh shares or a little over 2 percent of the paid up capital of the Yes Bank through open market transaction over a period of nearly 22 months

• **Aurobindo Pharma** intends to invest up to Rs 900 crore this fiscal on various activities including capacity expansion, clinical trials and product

• **Indusind Bank** is in talks with investment banks to arrange a share sale that could be worth USD 750 million, two sources directly involved in the deal . Morgan Stanley, CLSA, JM Financial and Credit Suisse are in the running to act as arrangers, these sources said, declining to be identified as they were not allowed to talk to the media.

• **Jindal Steel & Power Ltd (JSPL)** said one of its promoters has pledged a total of 3.39 percent stake in the firm with Axis Trustee Services in two tranches between June 3-5. In a BSE filing, JSPL said its promoter OPJ Trading Pvt Ltd has pledged 2.48 percent on June 3 and 0.91 percent stake in the firm on June 5 with Axis Trustee Services Ltd. As of March 2015, the promoter holds 20.51 percent stake in the firm. Post the pledging, the promoter has pledged a total of 10.47 percent stake of the 20.51 percent that it holds in JSP .

• **The Bombay High Court** posted for hearing on June 23 a petition seeking cancellation of the tender awarded to Larsen and Toubro (L&T) for installation of over 6,000 CCTVs in the city in the wake of 26/11 terror attacks.

• **Japan Ministry of Finance** said that BSI large manufacturing conditions fell to a seasonally adjusted annual rate of -6.0, from 2.4 in the preceding quarter. Analysts had expected BSI large manufacturing conditions to rise to 3.2 in the last quarter.

• **U.S. federal budget balance** fell to a seasonally adjusted -82.4B, from 157.0B in the preceding month. Analysts had expected U.S. federal budget balance to fall to -98.0B last month.

• **U.S. Gasoline Inventories** fell to a seasonally adjusted annual rate of -2.939M, from -0.334M in the preceding quarter. Analysts had expected U.S. Gasoline Inventories to rise 0.280M in the last quarter.

• **U.S. Crude Oil Inventories** fell to a seasonally adjusted annual rate of -6.812M, from -1.948M in the preceding month. Analysts had expected U.S. Crude Oil Inventories to fall - 1.720M last month.

Country	Monday 1 June 15	Tuesday 2 June 15	Wednesday 3 June 15	Thursday 4 June 15	Friday 5 June 15
US	Labor Market Conditions Index m/m .	JOLTS Job Openings , Wholesale Inventories m/m , 10-y Bond Auction .	Crude Oil Inventories , 30-y Bond Auction , Federal Budget Balance .	Core Retail Sales m/m , Retail Sales m/m , Unemployment Claims , Import Prices m/m , Business Inventories m/m .	PPI m/m , Core PPI m/m , Prelim UoM Consumer Sentiment , Prelim UoM Inflation Expectations .
UK/EURO ZONE	German Industrial Production m/m , German Trade Balance , Sentix Investor Confidence .	Italian Industrial Production m/m , Inflation Report Hearings , 10-y Bond Auction .	French Industrial Production m/m , Manufacturing Production m/m , Industrial Production m/m , NIESR GDP Estimate , RICS House Price Balance .	French Final Non-Farm Payrolls q/q , French CPI m/m .	German Final CPI m/m , Construction Output m/m , Industrial Production m/m .
INDIA					IIP & CPI Data

Narnolia Securities Ltd.

Narnolia Research Lab

Stellar IT Park | 5th Floor | Office Space No. 6 | Tower-II Ind Plot No. C-25 | Sector-62 | Noida | Ph : 0120-4215110

Central Strategy Desk - Kolkata

124 | 1st Floor | 7/1 Lords Sinha Road | Kolkata - 71
Ph : 033-22821500 | M : 93347 14418, 98302 69810