

SGX NIFTY : 7829.50 (9 Pt Up)

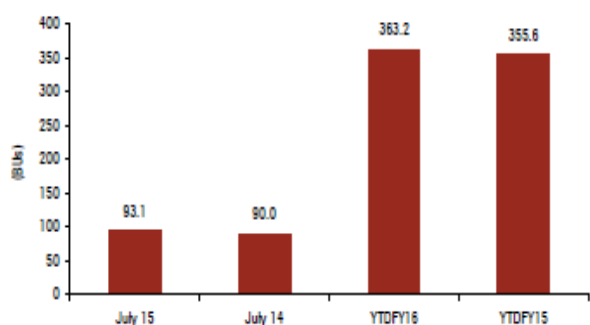
Quote of the Day

"Bargains are the holy grail of the true stockpicker. The fact that 10 to 30 percent of our net worth is lost in a market sell-off is of little consequence. We see the latest correction not as a disaster but as an opportunity to acquire more shares at low prices. This is how great fortunes are made over time."

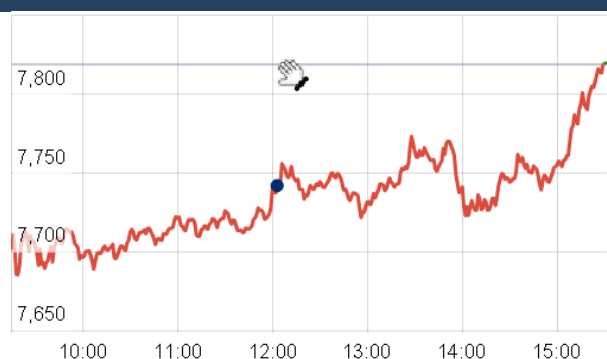
Peter Lynch

Chart of the Day

Monthly Generation Overview



Index Action Nifty (10th Sept 15)



Index

Contents	Page	Coverage
News	2	Update
Economic Calendar	3	Update

Market

Name	Value	Change
Sensex	25,622.17	(97.41)
Nifty	7788.10	(30.50)
DOW	16,330.40	76.38
NASDAQ	4,796.25	39.72
CAC	4,596.53	(68.03)
DAX	10,210.44	(98.88)
FTSE	6,155.81	(73.02)
NIKKIE	18,248.80	(59.31)
HANG SENG	21,680.84	113.34
EW ALL SHARE	13456.51	(39.02)

Instituional Turnover

FII

Investor	Buy(Cr.)	Sale(Cr.)	Net(Cr.)
10-Sep-15	3536.27	3657.46	(121.19)
Sept,15	24536.44	30074.39	(5537.95)
2015	846493.79	849204.70	(2710.91)

DII

Investor	Buy(Cr.)	Sale(Cr.)	Net(Cr.)
10-Sep-15	1321.59	1254.99	66.60
Sept,15	14412.08	9862.71	4549.37
2015	340710.40	294210.07	46500.33

Commodity Price

Commodity/Currencies	Value	Change
GOLD	26160.00	↑
SILVER	35390.00	↑
CRUDEOIL	45.72	↓
COPPER	364.90	↑
NATURALGAS	179.10	↓
DOLLAR/RS.	66.43	↑
EURO/RS.	74.80	↓
POUND/RS.	102.44	↓

Market Snapshot

Top Price Performers

Top Performers 1D	% Change	Top Performers 1W	% Change	Top Performers 1M	% Change
MIRCELECTR	16.70	JRG	52.61	ORISSASP	72.11
CHLOGIST	13.76	SUJANATOW	35.89	SHRGLTR	51.28
NEULANLAB	12.34	OUTCTYTRVL	27.36	JUBLINDS	46.72
SUVEN	11.94	KGL	25.63	DSINVEST	44.83
LML	11.88	BIRLACOT	25.00	ESTER	37.39

Worst Price Performers

Worst Performers 1D	% Change	Worst Performers 1W	% Change	Worst Performers 1M	% Change
SALSTEEL	(15.30)	ENERGYDEV	(38.28)	AMTEKAUTO	(79.63)
EMPEESUG	(12.96)	SCANPGEOM	(24.49)	AHMEDFORGE	(65.94)
CALSREF	(12.50)	JMTAUTOLTD	(22.44)	AMTEKINDIA	(61.93)
SURANAT&P	(10.00)	ROLATAN	(22.41)	JMTAUTOLTD	(58.15)
MANALIPETC	(9.34)	AHMEDFORGE	(22.37)	ROLATAN	(53.58)

Top News

- **Raymond Ltd** has acquired Robot Systems, a wholly owned subsidiary of apparel manufacturer Gokaldas Exports, in a Rs 28-crore deal. The acquisition was done through its wholly-owned subsidiary Silver Spark Apparel Ltd
- **Idea Cellular** plans to invest over Rs 550 crore in Uttar Pradesh over the next two years to deepen its penetration and increase Internet connectivity. the total investment of Rs 42,000 crore that Idea has made across the country, 11 percent of the investment has come to UP
- **Suven Life Sciences** has been granted one patent each in 5 nations, including China and Israel, for a drug used in the treatment of neurodegenerative diseases. one product patent from China, one product patent from Israel, one product patent from Mexico, one product patent from Singapore and one product patent from Sri Lanka corresponding to their New Chemical Entities (NCEs) for the treatment of disorders associated with neurodegenerative diseases
- **Anuh Pharma** expects its FY16 bottomline to grow 40 percent over last year . Company launch of six new products will be the key growth driver in FY17 . The existing products are also growing at the rate of about 20 percent on topline and 14 percent on bottomline
- **Mahindra & Mahindra (M&M)** launched its new compact sports utility vehicle TUV300 at a starting price of Rs 6.9 lakh. The new SUV's variants, which comes with a diesel engine, will be priced between Rs 6.9 lakh and Rs 9 lakh. TUV300 will be pitted against the likes of Ford Ecosport, Renault Duster and the newly launched Hyundai Creta.
- **Larsen & Toubro (L&T)** has received shareholders' approval for raising about Rs 9,600 crore through issuance of various securities, including equity shares and convertible bonds. Company has got approval for "raising funds through issue of convertible bonds and/or equity shares through depository receipts and including by way of qualified institutional placement to qualified institutional buyers for an amount not exceeding Rs 3,600 crore or USD 600 million, whichever is higher
- **Tata Motors** is expecting business of Rs 600 crore for supplying buses under the Centre's urban renewal programme JNNURM, the second phase of which is underway. As far as the orders go for JNNURM, around 50 percent of the total orders are placed with Tata motors. But the company has taken lead in supply of vehicles under this scheme. So if you take the supplies, it is around 65 percent of the total buses that are rolled out under this scheme . Company is expecting Rs 600 crore business total under Jawaharlal Nehru National Urban Renewal Mission (JNNURM)two, JNNURM one was around Rs 400 crore
- **U.S. Department of Labor said the number of individuals filing** for initial jobless benefits in the week ending September 5 decreased by 6,000 to a seasonally adjusted 275,000 from the previous week's total of 281,000.
- **Brazilian CPI** fell to 9.53%, from 9.56% in the preceding month. Analysts had expected Brazilian CPI to remain unchanged at 9.56% last month.
- **Swedish CPI** fell to a seasonally adjusted -0.2%, from -0.1% in the preceding month. Analysts had expected Swedish CPI to remain unchanged at -0.1% last month.
- **Australian unemployment rate** fell to a seasonally adjusted 6.2%, from 6.3% in the preceding month. Analysts had expected Australian unemployment rate to fall to 6.2% last month.
- **U.S. Gasoline Inventories** rose to a seasonally adjusted annual rate of 0.384M, from -0.271M in the preceding quarter . Analysts had expected U.S. Gasoline Inventories to fall -0.567M in the last quarter.
- **U.S. Crude Oil Inventories** rose to a seasonally adjusted annual rate of 2.570M, from 4.667M in the preceding month. Analysts had expected U.S. Crude Oil Inventories to rise 0.933M last month.

Economic Calendar

Country	Monday 7th Sept 15	Tuesday 8th Sept 15	Wednesday 9th Sept 15	Thursday 10th Sept 15	Friday 11th Sept 15
US	Labor Market Conditions Index m/m .	NFIB Small Business Index ,Consumer Credit m/m .	JOLTS Job Openings ,Crude Oil Inventories , 10-y Bond Auction , Federal Budget Balance , Treasury Currency Report .	Unemployment Claims , Import Prices m/m , Wholesale Inventories m/m , Natural Gas Storage .	PPI m/m , Core PPI m/m , Prelim UoM Consumer Sentiment , Prelim UoM Inflation Expectations , 30-y Bond Auction .
UK/EURO ZONE	Sentix Investor Confidence , German Industrial Production m/m , Construction PMI , BRC Retail Sales Monitor y/y .	Labor Market Conditions Index m/m .	French Gov Budget Balance , French Trade Balance , German 10-y Bond Auction .	French Final Non-Farm Payrolls q/q , French Industrial Production m/m , MPC Official Bank Rate Votes , Official Bank Rate , Asset Purchase Facility , MPC Asset Purchase Facility Votes , MPC Rate Statement .	German Final CPI m/m , Italian Industrial Production m/m , Construction Output m/m , 30-y Bond Auction .
INDIA					

Narnolia Securities Ltd.

Narnolia Research Lab

Stellar IT Park | 5th Floor | Office Space No. 6 | Tower-IIInd Plot No. C-25 | Sector-62 | Noida
| Ph : 0120-4215110

Central Strategy Desk - Kolkata

124 | 1st Floor | 7/1 Lords Sinha Road | Kolkata - 71
Ph : 033-22821500 | M : 93347 14418, 98302 69810