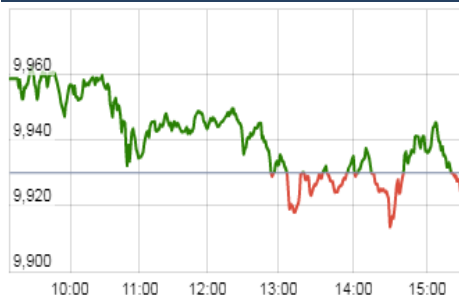


KEY LEVELS

Support 1 : 9860

Resistance 1 : 10013
Resistance 2 : 10132

Nifty Intraday Chart



Market

Market	Value	% Change
Morning Traded Market		
SGX NIFTY	9,989.00	0.43%
NIKKIE	19565.72	1.49%
HANG SENG	27,967.45	1.07%
Yesterday Closing Market		
Sensex	31,687.52	0.08%
Nifty	9,934.80	0.05%
DOW	6,360.19	-0.59%
NASDAQ	21,797.79	0.06%
CAC	5,113.49	-0.02%
DAX	12,303.98	0.06%
FTSE	7,377.60	-0.26%
EW ALL SHARE	18,218.62	-0.19%

% Change in 1 day

Commodity Price (Yesterday Closing)

Commodity/Currencies	Value	% Change
GOLD	30268.00	-0.05%
SILVER	41570.00	-0.11%
CRUDEOIL	53.76	-1.34%
NATURALGAS	193.20	-1.88%
DOLLAR/RS.	63.78	-0.40%
EURO/RS.	76.96	0.19%
POUND/RS.	84.22	0.43%

% Change in 1 day

Institutional Turnover

FII			
Investor	Buy(Cr.)	Sale(Cr.)	Net(Cr.)
08-Sep-17	3737	3993	(256)
Sep-17	16248	20251	(4003)
2017	865590	861768	3822
DII			
Investor	Buy(Cr.)	Sale(Cr.)	Net(Cr.)
08-Sep-17	2859	2371	488
Sep-17	12772	11318	1454
2017	524664	480435	44229

Market Outlook

Indian equities gave a range bound and choppy movement throughout last week and after opening with a red session, Nifty traded in the band of 9861 and 9989. At last the index closed the week with a net loss of 0.40% over the previous week's close. The midcap and small cap indices outperformed the benchmark index and closed the week in green.

On the sectoral front, Metal stocks were on the buyers' radar while FMCG and Pharmaceuticals stocks have shown some weakness during the week. The breadth of the market was slightly positive with more advances than declines.

The market continues to exhibit strong resilience. Nifty has gone up by more than 25% over last nine months. Below expectation, corporate results in Q1FY18 and management commentary post result suggests a higher chance of earning disappointment for the full financial year. But the market is ignoring earning as of now and is focussing more on near term triggers like smooth GST implementation. Market across the globe is also now coming to a consensus that US FED will pursue far easier policy regime than what its stated stand of raising rates is.

Derivative open interest has been the best indicator all through the current rally in the market and now strong open interest getting built at 9900 puts suggests Nifty is getting ready for one more round of rally. Technically, Nifty has traded inside a contracting triangle since 9th August. Presently this triangle provides support at 9861 and resistance at 10013. We should expect trending move in the market after a breakout from this triangle pattern in Nifty. Last week Nifty Mid Cap and Nifty Small Cap Index have made fresh all time high and that suggests a high probability of Nifty break-out on the upside.

Event Today

Today Result

ADVENZYMES , NEULANLAB

Stock Split

DECCANCE (From Rs.10/- to Rs.5/)
(Ex date : 11.9.2017)

Dividend

AMRTCORP : Rs 7.5/-
BGWTATO : Rs 0.80/-
CINELINE : Rs 0.5/-
CLARIS : Rs 2/-
CORALAB : Rs 5/-
ENGINEERSIN : Rs 0.5/-
HMLV : Rs 1.2/-
JBCHEPHARM : Rs 1/-
KAMADGIRI : Rs 1.5/-

KRL : Rs 1/-
MARVINY : Rs 1/-
OCL : Rs 5/-
PANACHE : Rs 0.5/-
PATELSAI : Rs 2.5/-
POWERGRID : Rs 3.35/-

TNPL : Rs 7.50/-
UJAAS : Rs 0.5/-
(Ex date : 11.9.2017)

Quote of the Day : "You get recessions, you have stock market declines. If you don't understand that's going to happen, then you're not ready, you won't do well in the markets." **Peter Lynch**

MATRIMONY.COM LIMITED : IPO Note**"SUBSCRIBE"****11th Sept 2017**

Every year, 10mn marriages happen across India out of which mere 2% happen through online match making portals. Considering this there is huge potential for Bharat Matrimony which has established itself as one of the most trusted brands for online match making services. Matrimony .com has more than 7 lac paid subscriptions in FY17 which has grown at CAGR of 4% over the last 3 years. This assures topline growth for the company in future. Moreover, the company is focussing on marriage services provider for booking of wedding venues, wedding planners, wedding cards, caterers, Photography, apparel, decorations and the whole bouquet of services. This allied business should add margins to the company going forward. We hence recommend SUBSCRIBE with a long term perspective. Company is being offered at 14times FY18E P/B with RoE of 38% (10% discount to retail investors on issue price).

ATLANTA**"BUY"****8th Sept 2017**

ATLANTA is one of the leading companies in EPC & BOT space with over 4 decades of experience in Indian Infrastructure sector. Company has executed more than 2500 lane km projects on PAN India basis. However, last couple of years was challenging for the company but we believe that the tough phase is over and ATLANTA is poised to grow going ahead. Currently, company has order book worth of Rs.1700 Cr in roads and highways along with 3 real estate projects in state of Maharashtra and Rajasthan. Out of Rs.1700 Cr of order book, Rs.1150 Cr is related to HAM project in Gujarat which will start contributing in revenue from Q3FY18 onwards. We expect robust EPC revenue growth of 70% in FY18 and 100% plus in FY19 considering lower base of previous year FY17. Further management expects to receive Rs.1000 Cr worth of new orders in FY18 which will provide strong revenue growth for next 3-4 years. Around Rs.1400 Cr of arbitration claim is pending at various stages and management expect to receive it in next two years which will be utilized for the debt repayment. Considering the strong revenue growth, immense opportunity in infra space and zero debt to equity we initiate "BUY" on ATLANTA with target price Rs.130.

**For details, refer to our daily report- India Equity Analytics*

Top News

>> **TCI Express** is looking at a turnover of Rs 900 crore in the ongoing financial year . The company had a turnover of Rs 750 crore in the 2016-17 fiscal. The domestic express logistics industry is of Rs 25,000 crore and TCI Express has a 3-4 per cent market share in it.

>> **Biocon Mgt Guideline** : Company is betting big on small molecules and generic formulations, biosimilars, branded formulations and research services as it targets USD 1 billion revenue by the next fiscal. The company has been chasing the target since 2011, has identified these verticals as its key focus areas. Biocon had posted a revenue of Rs 4,078.7 crore in 2016-17. Other focus area for the company will be out-licensing and global development of novel molecules . In the area of small molecules and generic formulations, Biocon said it is focusing on the,"improved product mix including abbreviated new drug applications (ANDAs).

In the area of small molecules and generic formulations, Biocon said it is focusing on the,"improved product mix including abbreviated new drug applications (ANDAs).

The company is also looking at out-licensing and global development of its novel molecules for future growth.

Biocon expects that the growth drivers would be supplemented by addition of new offerings such as products, services and partnerships to help the company achieve its target of USD 1 billion revenues by 2018-19.

>> **Indiabulls Housing Finance** has raised Rs 1,000 crore by issuing bonds on a private placement basis. The company today allotted 100,000 unsecured redeemable non-convertible subordinated debentures of face value of Rs 1 lakh each aggregating to Rs 1,000 crore

>> **GST cess hike in cars** to take effect from Sept 11 .The GST Council decided to hike cess on mid-sized cars by 2 percent, taking the effective GST rate to 45 percent. cess on large cars has been hiked by 5 per cent, taking the total GST incidence to 48 percent while that of SUVs by 7 percent to 50 percent . (Negative for Maruti , M&M , Tata Motors etc)

>> **Steel Authority of India Ltd (SAIL)** witnessed a growth of 7 per cent in total sales during the April-August 2017 period over the corresponding period last year. During this period, domestic sales showed improvement in both long and flat products enabling SAIL to increase its market share to 14.6 per cent from 13.4 per cent

>> **GMR Infrastructure** will seek shareholders' nod to raise up to Rs 2,500 crore through issuance of bonds, equity shares and equity-linked instruments later this month.

>> Thyssenkrupp shareholders are urging the group to clinch a deal with **Tata Steel** to merge their European steel businesses this year, warning failure to do so would be a blow to its credibility.

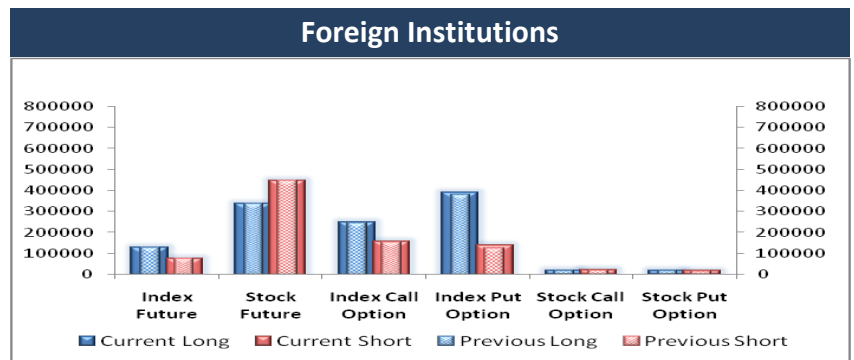
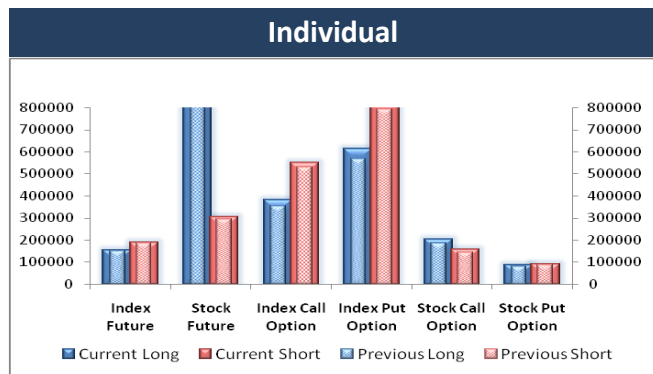
>> **Infosys** will continue to hire about 6,000 engineers annually over next 1-2 years, same as last fiscal . Company is has also ramped up its hiring process in the US and European markets as it looks to tap opportunities and tide over visa- related issues

>> **UCO Bank** has started the process of selling bad loans worth Rs 2,420 crore from 27 accounts, a tender document on its website revealed. The bank has invited expressions of interest from asset reconstruction companies and other financial institutions. The last date for submitting bids is September 11.

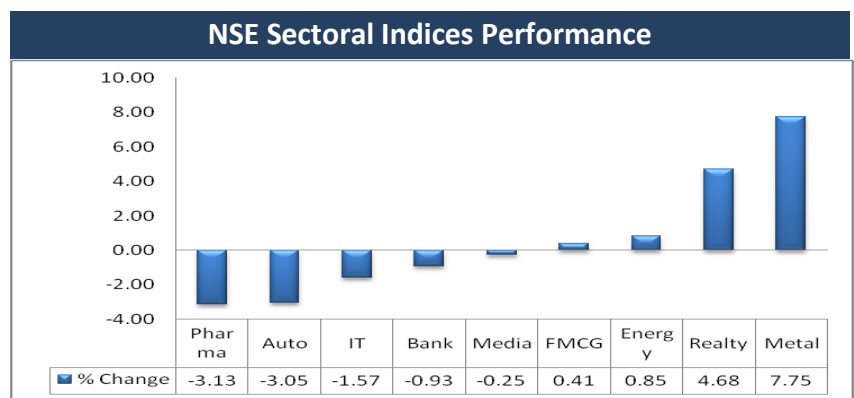
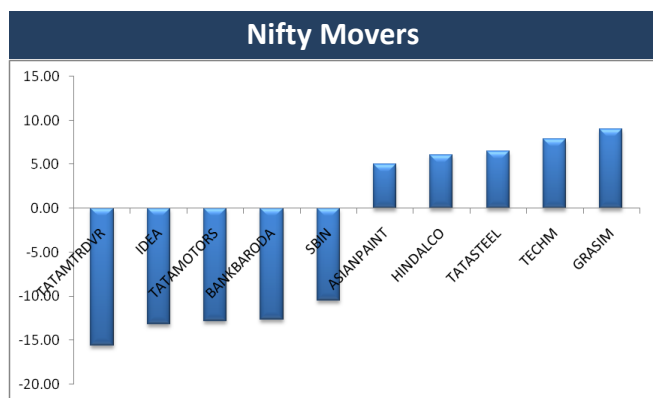
Block Deal

Exchange	Deal Date	Company	Client Name	Deal Type	Quantity	Price
NSE	08-Sep-17	APTECHT	ANKITA VISHAL SHAH	BUY	235815	318
NSE	08-Sep-17	OMKARCHEM	PATEL MANAV NARESHBHAI	BUY	134089	89
NSE	08-Sep-17	PUNJLLOYD	ADROIT FINANCIAL SERVICES PRIVATE LIMITED	BUY	2856339	24
NSE	08-Sep-17	RAMASTEEL	DINESH SHAH	BUY	102075	159
NSE	08-Sep-17	SANCO	DINESH SHAH	BUY	94784	92
NSE	08-Sep-17	WEBELSOLAR	MANGAL SAVITRI BIZCON PRIVATE LIMITED	BUY	61281	112
NSE	08-Sep-17	63MOONS	BLACKSTONE GPV CAPITAL PARTNERS (MAURITIUS) VI FII	SELL	980000	78
NSE	08-Sep-17	APTECHT	ANKITA VISHAL SHAH	SELL	235815	318
NSE	08-Sep-17	OMKARCHEM	PATEL MANAV NARESHBHAI	SELL	134089	88
NSE	08-Sep-17	PUNJLLOYD	ADROIT FINANCIAL SERVICES PRIVATE LIMITED	SELL	2895738	24
NSE	08-Sep-17	RAMASTEEL	DINESH SHAH	SELL	95939	159
NSE	08-Sep-17	REFEX	BP FINTRADE PRIVATE LIMITED	SELL	89054	19
NSE	08-Sep-17	SANCO	DINESH SHAH	SELL	95284	93
NSE	08-Sep-17	WEBELSOLAR	MANGAL SAVITRI BIZCON PRIVATE LIMITED	SELL	246140	112

F&O OPEN INTEREST (Number of Contracts)



MARKET MOVERS (1 MONTH CHANGE)



Result Calendar Q1FY18

Bse Code	Company Name	Date	Bse Code	Company Name	Date
539096	AANANDALAK	11-Sep-17	512626	ORBTEXP	11-Sep-17
526711	ADARSHPL	11-Sep-17	530173	OSCARGLO	11-Sep-17
540025	ADVENZYMES	11-Sep-17	517397	PANELEC	11-Sep-17
517546	ALFATRAN	11-Sep-17	524136	PCCOSMA	11-Sep-17
531557	AMITSEC	11-Sep-17	539195	POEL	11-Sep-17
526173	ANDREWYU	11-Sep-17	524580	PRIYALT	11-Sep-17
532914	ARCOTECH	11-Sep-17	590070	RADAAN	11-Sep-17
530429	ASHISHPO	11-Sep-17	539309	RAMASTEEL	11-Sep-17
514360	AXISRAIL	11-Sep-17	507649	RASOI	11-Sep-17
507944	BAJAJST	11-Sep-17	509845	RJSHAH	11-Sep-17
524824	BALPHARMA	11-Sep-17	531447	ROCKONENT	11-Sep-17
512404	BENGALS	11-Sep-17	517500	ROTO	11-Sep-17
500083	CENTEXT	11-Sep-17	526193	ROYALCU	11-Sep-17
540678	COCHINSHIP	11-Sep-17	503169	RUBYMILLS	11-Sep-17
538521	CROWNTOURS	11-Sep-17	530461	SABOOSOD	11-Sep-17
532271	CYBERMAT	11-Sep-17	534139	SCHNEIDER	11-Sep-17
522261	DOLPHINOFF	11-Sep-17	539111	SHESHAINDS	11-Sep-17
530079	FAZE3Q	11-Sep-17	505729	SINGER	11-Sep-17
536751	FIVEXTRADE	11-Sep-17	526839	SIPL	11-Sep-17
538595	GLOSTER	11-Sep-17	521161	SLSTLQ	11-Sep-17
526729	GOLDIAM	11-Sep-17	534425	SPECIALITY	11-Sep-17
500467	HARRMALAYA	11-Sep-17	532879	SSLEL	11-Sep-17
531968	IITLPROJ	11-Sep-17	534748	STEELXIND	11-Sep-17
531594	INCON	11-Sep-17	521180	SUPERSPIN	11-Sep-17
531253	INDGELA	11-Sep-17	530185	SURATEX	11-Sep-17
523586	INDTONER	11-Sep-17	514140	SURYVANSP	11-Sep-17
532326	INTENTECH	11-Sep-17	531909	SWAGRUHA	11-Sep-17
526558	JAMEHOT	11-Sep-17	519483	TAIIND	11-Sep-17
512597	KEYCORPSE	11-Sep-17	533164	TEXMOPIPES	11-Sep-17
532067	KILPEST	11-Sep-17	500414	TIMEX	11-Sep-17
530145	KISAN	11-Sep-17	531917	TWINSTAR	11-Sep-17
526409	KKALPANAIND	11-Sep-17	500464	UCALFUEL	11-Sep-17
532081	KSERASERA	11-Sep-17	512408	UNIWSEC	11-Sep-17
509048	LANCORHOL	11-Sep-17	513397	VALLABHSQ	11-Sep-17
540360	LLFICL	11-Sep-17	513534	VARDHINDQ	11-Sep-17
523371	MAWANASUG	11-Sep-17	531717	VIDHIING	11-Sep-17
523792	MAZDALTD	11-Sep-17	530477	VIKRAMTH	11-Sep-17
512415	MERCTRD	11-Sep-17	531282	VIRPOLY	11-Sep-17
522036	MIVENMACH	11-Sep-17	509038	VOLLF	11-Sep-17
519287	MODAIRY	11-Sep-17	524212	WANBURY	11-Sep-17
506261	MODISNME	11-Sep-17	514470	WINSOMTX	11-Sep-17
500288	MOREPENLAB	11-Sep-17	524758	WINTAC	11-Sep-17
526169	MULTIBASE	11-Sep-17	521163	ZODIACLOTH	11-Sep-17
524558	NEULANLAB	11-Sep-17	531161	ABMKNO	12-Sep-17
502255	NEYCERI	11-Sep-17	514113	ADINATH	12-Sep-17
530435	NOESISIND	11-Sep-17	538351	AFEL	12-Sep-17

524075	ALBERTDA	12-Sep-17	523550	KRYPTONQ	12-Sep-17
531673	ANKIN	12-Sep-17	533289	KTIL	12-Sep-17
517096	APLAB	12-Sep-17	506079	LAKPRE	12-Sep-17
511064	APLAYA	12-Sep-17	532275	LANDMARC	12-Sep-17
500014	APPLEFIN	12-Sep-17	532829	LEHAR	12-Sep-17
531677	ARISINT	12-Sep-17	531613	MAL	12-Sep-17
533068	ARROWTEX	12-Sep-17	531394	MARVINY	12-Sep-17
532853	ASAHISONG	12-Sep-17	512167	MATRAREAL	12-Sep-17
524594	ASHOKALC	12-Sep-17	531456	MINAXI	12-Sep-17
532759	ATLANTA	12-Sep-17	532407	MOSCHIP	12-Sep-17
533016	AUSTRAL	12-Sep-17	517140	MOSERBAER	12-Sep-17
505506	AXONVL	12-Sep-17	532991	MVL	12-Sep-17
513142	BALASORE	12-Sep-17	512024	NDMETAL	12-Sep-17
522650	BEMHY	12-Sep-17	508875	NITINCAST	12-Sep-17
509449	BHAGWOX	12-Sep-17	519491	OCEAGRO	12-Sep-17
532719	BLKASHYAP	12-Sep-17	511644	OMEGAIN	12-Sep-17
504671	CHASBRT	12-Sep-17	530365	ORIENTBELL	12-Sep-17
530495	CHHATTIND	12-Sep-17	534076	ORIENTREF	12-Sep-17
512213	CLASELE	12-Sep-17	538742	PANACHE	12-Sep-17
524752	COMBDRG	12-Sep-17	524628	PARKERAC	12-Sep-17
532801	CTE	12-Sep-17	511734	PASUFIN	12-Sep-17
532640	CYBERMEDIA	12-Sep-17	526381	PATINTLOG	12-Sep-17
526443	DATASOFT	12-Sep-17	517119	PCS	12-Sep-17
504286	DELTAMAGNT	12-Sep-17	538730	PDSMFL	12-Sep-17
526705	ELEMARB	12-Sep-17	532808	PGIL	12-Sep-17
533218	EMAMIINFRA	12-Sep-17	507864	PIONRINV	12-Sep-17
526574	ENTRINT	12-Sep-17	500333	PIXTRANS	12-Sep-17
531191	FILTRON	12-Sep-17	531397	POLYCON	12-Sep-17
533638	FLEXITUFF	12-Sep-17	517258	PRECISIO	12-Sep-17
536507	FLFL	12-Sep-17	530589	PRIMAPLA	12-Sep-17
530077	FRSHTRP	12-Sep-17	512105	PROAIMENT	12-Sep-17
530317	GODAVARI	12-Sep-17	531437	PWASML	12-Sep-17
533761	GPTINFRA	12-Sep-17	524502	RAAJMEDI	12-Sep-17
509152	GRPLTD	12-Sep-17	514316	RAGHUSYN	12-Sep-17
531918	HINDAPL	12-Sep-17	507300	RAVALSUGAR	12-Sep-17
504713	HINDWRS	12-Sep-17	537254	RCIIND	12-Sep-17
500449	HOCL	12-Sep-17	526861	RISHILASE	12-Sep-17
532145	HOTLSILV	12-Sep-17	523021	RISHITECH	12-Sep-17
526931	HRYNShP	12-Sep-17	532005	SAMINDUS	12-Sep-17
511194	ICDSLTD	12-Sep-17	532836	SANCIA	12-Sep-17
504741	INDIANHUME	12-Sep-17	532435	SANINFRA	12-Sep-17
530787	INLANPR	12-Sep-17	526885	SARLAPOLY	12-Sep-17
531109	ISHANCH	12-Sep-17	517360	SBECSYS	12-Sep-17
532617	JETAIRWAYS	12-Sep-17	509870	SHAHCON	12-Sep-17
517063	JETKINGQ	12-Sep-17	538685	SHEMAROO	12-Sep-17
511131	KAMANWALA	12-Sep-17	531962	SHREMETAL	12-Sep-17
508993	KEDIACN	12-Sep-17	512463	SHRGLTR	12-Sep-17
519602	KELLTONTEC	12-Sep-17	539742	SIMBHALS	12-Sep-17
523652	KKPLASTICK	12-Sep-17	526479	SKYIND	12-Sep-17

523826	SOVERDIA	12-Sep-17	532290	BLBLIMITED	13-Sep-17
531982	SPECFOOD	12-Sep-17	509470	BOMOXY-B1	13-Sep-17
526827	SPICEISL	12-Sep-17	500078	CAMPHOR	13-Sep-17
532651	SPLIL	12-Sep-17	522251	CENLUB	13-Sep-17
500402	SPMLINFRA	12-Sep-17	526817	CHEVIOT	13-Sep-17
539255	STARDELTA	12-Sep-17	517330	CMI	13-Sep-17
526071	STELLANT	12-Sep-17	540597	CONTAINER	13-Sep-17
530845	SUNSHIEL	12-Sep-17	512519	DONEAR	13-Sep-17
523842	SUPTANERY	12-Sep-17	532365	DSSL	13-Sep-17
513307	SYNTHFO	12-Sep-17	534674	DUCON	13-Sep-17
533982	TERASOFT	12-Sep-17	505242	DYNAMATECH	13-Sep-17
506162	TERRAFORM	12-Sep-17	531346	EASTRED	13-Sep-17
512157	TERRAREAL	12-Sep-17	514474	FAIRDSY	13-Sep-17
540210	TMRVL	12-Sep-17	507552	FOODSIN	13-Sep-17
530997	UNIQUEO	12-Sep-17	500155	GARDENSILK	13-Sep-17
522091	UVDRHOR	12-Sep-17	507506	GIRDSGA	13-Sep-17
532867	V2RETAIL	12-Sep-17	539991	GLOBE	13-Sep-17
512229	VERITAS	12-Sep-17	506480	GOCLCORP	13-Sep-17
531069	VIJSOLX	12-Sep-17	532439	GOLDINFRA	13-Sep-17
533427	VMS	12-Sep-17	531439	GOLDTECH	13-Sep-17
522029	WINDMACHIN	12-Sep-17	513309	GOLKONDA	13-Sep-17
514348	WINSOME	12-Sep-17	540081	GOVNOW	13-Sep-17
507817	WIREFABR	12-Sep-17	508918	GREYCELLS	13-Sep-17
511147	WSFIN	12-Sep-17	501314	GROMOTRADE	13-Sep-17
511601	YASHMGM	12-Sep-17	539206	GVBL	13-Sep-17
506720	ZANDUREALT	12-Sep-17	500500	HINDMOTORS	13-Sep-17
517356	ACIIN	13-Sep-17	530853	HIPOLIN	13-Sep-17
507852	ADDIND	13-Sep-17	524342	INDOBORAX	13-Sep-17
533221	AHLWEST	13-Sep-17	509709	INTLCONV	13-Sep-17
506120	ALNATRD	13-Sep-17	532479	ISMTLTD	13-Sep-17
530715	ALPSINDUS	13-Sep-17	523610	ITI	13-Sep-17
534612	AMTL	13-Sep-17	506520	JAYCH	13-Sep-17
511153	ANJANIFOODS	13-Sep-17	513252	JAYUSH	13-Sep-17
511339	APPLECREDIT	13-Sep-17	524109	KABRAEXTRU	13-Sep-17
524640	ARCHITORG	13-Sep-17	514322	KAMADGIRI	13-Sep-17
526851	AREXMIS	13-Sep-17	533451	KARMAENG	13-Sep-17
531553	ARIAC	13-Sep-17	530357	KBSINDIA	13-Sep-17
538556	ARMAN	13-Sep-17	506530	KEMP	13-Sep-17
516064	ARROWGREEN	13-Sep-17	530215	KINGSINFR	13-Sep-17
530723	ASITCFIN	13-Sep-17	524280	KOPRAN	13-Sep-17
522005	AUSTENG	13-Sep-17	526423	KRITIIND	13-Sep-17
532395	AXISCADES	13-Sep-17	533210	KRITINUT	13-Sep-17
524516	BACPHAR	13-Sep-17	505299	KULKPOWT	13-Sep-17
539447	BEARDSSELL	13-Sep-17	532740	LOKESHMACH	13-Sep-17
508664	BESTEAST	13-Sep-17	533343	LOVABLE	13-Sep-17
504646	BGWTATO	13-Sep-17	532906	MAANALU	13-Sep-17
511501	BHARAT	13-Sep-17	523384	MAHAPEXLTD	13-Sep-17
500058	BIHSPONG	13-Sep-17	531176	MEFCOMCAP	13-Sep-17

531357	MERMETL	13-Sep-17	519566	SIMRAN	13-Sep-17
531810	METALCO	13-Sep-17	500388	SKPMIL	13-Sep-17
538962	MINDACORP	13-Sep-17	532316	SKUMAR	13-Sep-17
500279	MIRCELECTR	13-Sep-17	540679	SMSLIFE	13-Sep-17
500890	MODIRUBBER	13-Sep-17	532815	SMSPHARMA	13-Sep-17
513305	MORYOIND	13-Sep-17	513699	SOLIDSTON	13-Sep-17
508867	NEWMKTADV	13-Sep-17	532172	SPHEREGSL	13-Sep-17
511714	NIMBSPROJ	13-Sep-17	512531	STCINDIA	13-Sep-17
521105	OLYMPTX	13-Sep-17	531628	STERSPN	13-Sep-17
531496	OMKAR	13-Sep-17	521113	SUDTIND-B	13-Sep-17
514324	OMNITEX	13-Sep-17	533166	SUNDARAM	13-Sep-17
526325	ORIENTLTD	13-Sep-17	513277	SUPERFORGE	13-Sep-17
506852	PACL	13-Sep-17	532509	SUPRAJIT	13-Sep-17
531349	PANACEABIO	13-Sep-17	506863	SWADEIN	13-Sep-17
500322	PANCM	13-Sep-17	503310	SWANENERGY	13-Sep-17
514087	PBMPOLY	13-Sep-17	532738	TANTIACONS	13-Sep-17
526588	PHOTOQUP	13-Sep-17	505685	TAPARIA	13-Sep-17
523620	PHRMASI	13-Sep-17	532869	TARMAT	13-Sep-17
512026	PHTRADING	13-Sep-17	530533	TERAI	13-Sep-17
533178	PRADIP	13-Sep-17	503663	TILAK	13-Sep-17
531257	PRATIKSH	13-Sep-17	532375	TIPSINDLTD	13-Sep-17
534675	PROZONINTU	13-Sep-17	532928	TRIL	13-Sep-17
506618	PUNJABCHEM	13-Sep-17	504673	UNIVPRIM	13-Sep-17
538596	QUANTBUILD	13-Sep-17	532765	USHERAGRO	13-Sep-17
530047	RAIREKMOH	13-Sep-17	514175	VARDMPOLY	13-Sep-17
514028	RAJKSYN	13-Sep-17	532613	VIPCLOTHNG	13-Sep-17
532826	RAJTV	13-Sep-17	511509	VIVBIOT	13-Sep-17
524037	RAMAPHO	13-Sep-17	507410	WALCHANNAG	13-Sep-17
513369	RJKMRFR	13-Sep-17	533452	WEIZFOREX	13-Sep-17
532692	RMCL	13-Sep-17	523011	WEIZMANIND	13-Sep-17
506642	SADHNANIQ	13-Sep-17	526471	WINSOMBR	13-Sep-17
532713	SAKUMA	13-Sep-17	505872	WPIL	13-Sep-17
530125	SAMRATPH	13-Sep-17	532616	XCHANGING	13-Sep-17
504918	SANDUMA	13-Sep-17	512062	ZSANMCOM	13-Sep-17
514234	SANGAMIND	13-Sep-17	501178	ZSURYODI	13-Sep-17
530993	SARTHAKGL	13-Sep-17	503624	ZSVARAJT	13-Sep-17
508996	SATRAPROP	13-Sep-17	503622	ZSVTRADI	13-Sep-17
502175	SAURASHCEM	13-Sep-17	539632	AARCOM	14-Sep-17
517320	SAVINFOCO	13-Sep-17	514274	AARVEEDEN	14-Sep-17
539143	SBCL	13-Sep-17	526488	AARVINFRA	14-Sep-17
505141	SCOOTER	13-Sep-17	520123	ABCINDQ	14-Sep-17
526508	SHAHISHIP	13-Sep-17	532831	ABHISHEK	14-Sep-17
513097	SHBCLQ	13-Sep-17	517494	ACCEL	14-Sep-17
503205	SHREERAM	13-Sep-17	513149	ACROW	14-Sep-17
532945	SHRIRAMEPC	13-Sep-17	511706	ACTIONFI	14-Sep-17
507998	SIMMOND	13-Sep-17	530431	ADORFO	14-Sep-17

Economic Calendar					
Country	Monday 11th Sept 17	Tuesday 12th Sept 17	Wednesday 13th Sept 17	Thursday 14th Sept 17	Friday 15th Sept 17
US		NFIB Small Business Index, Federal Budget Balance , TIC Long-Term Purchases	PPI m/m, Core PPI m/m, Crude Oil Inventories	CPI m/m, Core CPI m/m, Unemployment Claims , Natural Gas Storage	Core Retail Sales m/m, Retail Sales m/m, Empire State Manufacturing Index, Capacity Utilization Rate, Industrial Production m/m, Prelim UoM Consumer Sentiment, Business Inventories m/m, Prelim UoM Inflation Expectations
UK/EURO ZONE	German Final CPI m/m , Italian Quarterly Unemployment Rate, Sentix Investor Confidence, German Buba Monthly Report	CPI y/y, PPI Input m/m, RPI y/y, Core CPI y/y, HPI y/y, PPI Output m/m	Average Earnings Index 3m/y, Claimant Count Change, Unemployment Rate, Employment Change q/q, Industrial Production m/m, German 10-y Bond Auction	Retail Sales m/m, MPC Official Bank Rate Votes, Monetary Policy Summary, Official Bank Rate, Asset Purchase Facility, MPC Asset Purchase Facility Votes	German WPI m/m , Italian Trade Balance, Trade Balance,
INDIA		IIP Data		WPI Data	Balance of Trade



Narnolia Securities Ltd

201 | 2nd Floor | Marble Arch Building | 236B-AJC Bose
Road | Kolkata-700 020 , Ph : 033-40501500

email: narnolia@narnolia.com,
website : www.narnolia.com

Risk Disclosure & Disclaimer: This report/message is for the personal information of the authorized recipient and does not construe to be any investment, legal or taxation advice to you. Narnolia Securities Ltd. (Hereinafter referred as NSL) is not soliciting any action based upon it. This report/message is not for public distribution and has been furnished to you solely for your information and should not be reproduced or redistributed to any other person in any form. The report/message is based upon publicly available information, findings of our research wing "East wind" & information that we consider reliable, but we do not represent that it is accurate or complete and we do not provide any express or implied warranty of any kind, and also these are subject to change without notice. The recipients of this report should rely on their own investigations, should use their own judgment for taking any investment decisions keeping in mind that past performance is not necessarily a guide to future performance & that the the value of any investment or income are subject to market and other risks. Further it will be safe to assume that NSL and /or its Group or associate Companies, their Directors, affiliates and/or employees may have interests/ positions, financial or otherwise, individually or otherwise in the recommended/mentioned securities/mutual funds/ model funds and other investment products which may be added or disposed including & other mentioned in this report/message.