

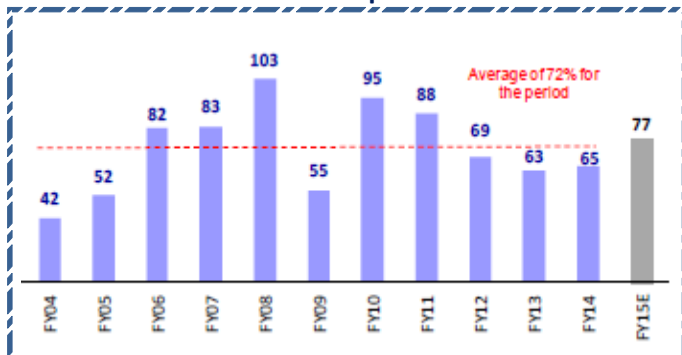
Quote of the Day

"Although I consider myself to be primarily in the quantitative school, the really sensational ideas I have had over the years have been heavily weighted toward the qualitative side where I have had a 'high-probability insight'. This is what causes the cash register to really sing." **Warren Buffett**

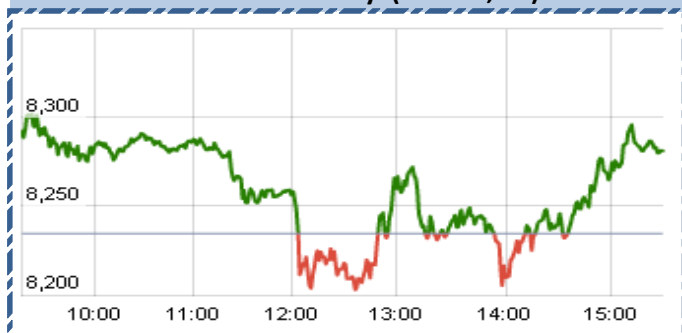
SGX NIFTY : 8277
(37 pts Down)

Chart of the Day

Indian MKT Cap to GDP %



Index Action-Nifty (9th Jan, 15)



Index

Contents	Page	Coverage
News	3	UPDATE
Result Calendar Q3FY15	4 to 7	UPDATE
Result Q3FY15	7	UPDATE
Economic calendar	7	UPDATE

MARKET

Name	Value	Change
Sensex	27,458	183.67
Nifty	8,285	49.90
DOW	17737.37	(170.50)
NASDAQ	4704.07	(32.12)
CAC	4179.07	(81.12)
DAX	9648.5	(189.11)
FTSE	6501.14	(68.82)
NIKKIE	Closed	
HANG SENG	23967.43	47.48
EW ALL SHARE	14032.30	57.53

INSTITUTIONAL TURNOVER

FII			
Investor	Buy(Cr.)	Sale(Cr.)	Net(Cr.)
9th Jan	4182.20	4,480.19	(297.99)
Jan,14	8039.34	8,860.08	(820.74)
2014	8039.34	8,860.08	(820.74)
DII			
Investor	Buy(Cr.)	Sale(Cr.)	Net(Cr.)
9th Jan	1876.92	1,577.39	299.53
Jan,14	5962.95	5,259.70	703.25
2014	5962.95	5,259.70	703.25

COMMODITY PRICE

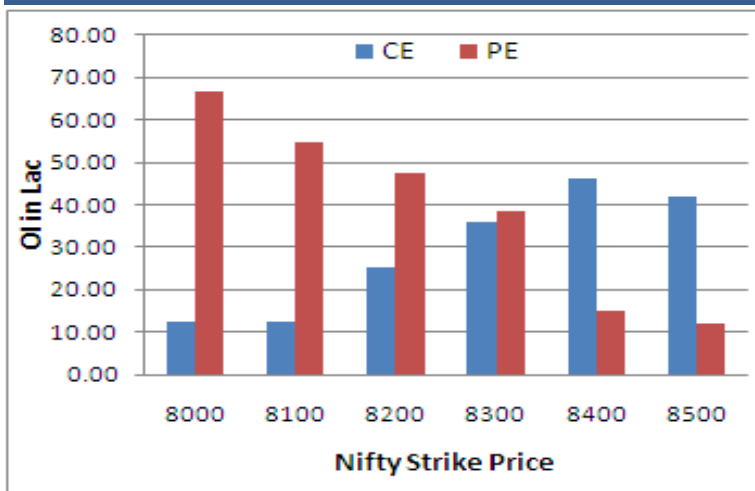
COMMODITY/CURRENCIES	Value	
GOLD	26800.00	↓
SILVER	36833.00	↓
CRUDEOIL	48.17	↓
COPPER	392.18	↓
NATURALGAS	183.90	↓
DOLLAR/RS.	62.33	↓
EURO/RS.	73.84	↑
POUND/RS.	94.52	↑

Narnolia Securities Ltd.

NIFTY SNAPSHOT	
Nifty Spot	8284.50(+49.90)
Nifty Jan 2014 Future	8311
Nifty Feb 2014 Future	8361
Nifty Jan 2014 Open Interest	17111350
Nifty Feb 2014 Open Interest	632875
7 DMA of Spot Nifty	8258
21 DMA of Spot Nifty	8227
50 DMA of Spot Nifty	8334
VOLATILITY INDEX (VIX)	15.95(-0.52)
PUT CALL RATIO	1.08



Nifty (Jan Series) Option OI Distribution:



Activity of Nifty (Jan Series) Strike

Strike	CALL		PUT	
	OI	% Chng	OI	% Chng
8000	1238725	-17.18	6680925	5.85
8100	1241225	-4.42	5477400	13.56
8200	2539425	-11.17	4764150	2.00
8300	3590525	-9.16	3842625	6.87
8400	4618800	-16.79	1499800	6.21
8500	4188925	-3.79	1186375	3.42

FII's Activity (Fig in Cr)

Segment	Buy	Sell	Net
INDEX FUTURE	1,906	1,968	(62)
INDEX OPTION	21,135	20,304	831
STOCK FUTURE	3,556	2,982	574
STOCK OPTION	3,521	3,594	(73)
TOTAL	30,119	28,849	1,270

Fresh Long Seen In (Rising OI -Rising Price)

Scrip	OI	OI ch%	CMP	Ch%
HINDUNILVR	65,24,000	24.8	863.5	5.9
HCLTECH	25,88,125	17.8	1545.2	0.8
EXIDEIND	95,84,000	14.7	189.5	1.9
INFY	86,46,250	10.8	2073.6	5.0
BATAINDIA	8,99,750	6.7	1360.5	2.9

Fresh Shorts Seen In: (Rising OI -Falling Price)

Scrip	OI	OI ch%	CMP	Ch%
CANBK	80,47,000	14.8	440.5	-2.7
ASHOKLEY	851,76,000	13.7	58.7	-3.9
OFSS	90,750	12.9	3288.8	-1.1
IDEA	130,52,000	8.8	147.5	-3.2
DISHTV	236,12,000	7.8	67.4	-2.8

PCR (OI)

STOCK	T1	T2
DRREDDY	0.68	0.49
TCS	0.79	0.68
UBL	0.31	0.27
HAVELLS	0.37	0.33
TECHM	0.75	0.66

PCR (OI)

STOCK	T1	T2
BAJAJ-AUTO	0.45	0.94
ABIRLANUVO	0.57	0.79
ASHOKLEY	0.53	0.72
AXISBANK	0.47	0.59
INDUSINDBK	0.91	1.10

Markets Snapshot

Top Price Performers

Top Performers 1D	% Change	Top Performers 1W	% Change	Top Performers 1M	% Change
VIDEOIND	19.99	XLENERGY	64.31	ABGHEAVY	102.92
GMBREW	19.99	NTCIND	59.38	NTCIND	81.87
RPPINFRA	19.98	SHIV-VANI	53.26	EMPIND	73.24
VALUEIND	19.93	IMPEXFERRO	47.98	CENTRUM	56.46
RICHAIND	15.35	PRADIP	44.39	SUNDARAM	56.28

Worst Price Performers

Worst Performers 1D	% Change	Worst Performers 1W	% Change	Worst Performers 1M	% Change
BILPOWER	(14.29)	AADHAARVEN	(33.33)	INFODRIVE	(88.50)
SHILPI	(12.52)	MAVENS BIO	(31.17)	KSERASERA	(70.15)
MANJEERA	(9.98)	OUTCTYTRVL	(30.51)	PRITI	(67.39)
CURATECH	(9.96)	MAHAPOL	(27.06)	OUTCTYTRVL	(63.42)
JCTEL	(9.88)	CRANESSOFT	(24.16)	RASOYPR	(53.68)

Top News :

- **Tech Mahindra** has signed a definitive agreement to acquire Switzerland-based niche consulting and services company SOFGEN Holdings. The transaction is expected to close by March 2015 . The acquisition will add USD 45 million to the revenue . SOFGEN has a worldwide presence specializing in private, commercial and retail banking and has around 20 Tier-I clients across geographies. The firm has over 450 employees.

- **ABB** has bagged a contract worth Rs 256 crore from the Ceylon Electricity Board (CEB) to supply two 220 kV substations and upgrade an existing substation in Sri Lanka. The new substations will be constructed at Polpitiya in the Central Province and Padukka near the capital, Colombo, in the Western Province, while the existing substation at Pannipitiya, a suburb of Colombo, will be augmented . The project is scheduled for completion in 2017.

- **Asian Paints** is yet to secure land for its third plant in South India that could entail a tentative investment of Rs 2,500 crore. Asian Paints was trying to build a 6 lakh KL per year capacity decorative paints in Karnataka near Mysore but land acquisition of 130 acres, needed for the project, ran into trouble since 2013. Asian Paints was not considering any plant immediately in eastern India because of being a small market and also for land and power issues. The company indicated that there was no immediate plans to cut paint prices due to easing of crude price.

- **Orange Mauritius Investments Limited** bought 20,00,150 shares of Lloyd Electric and Engineering at Rs 137.80 on the BSE. Oppenheimer Developing Markets sold 1,08,31,639 shares of Marico at Rs 319.25 on the NSE.

- **HDFC** has sold nearly 70 lakh shares in HDFC Life to Azim Premji Trust for Rs 73.31 crore. In December, HDFC Ltd, the holding company of HDFC Life, had sold over 1.89 crore shares to the Premji Trust for about Rs 198.99 crore.

- **Adani Enterprises** plan to invest up to \$4 billion in what would be one of India's largest solar panel makers . Modi wants companies from China, Japan, Germany and the United States to lead investments of \$100 billion over seven years to boost India's solar energy capacity by 33 times to 100,000 megawatts (MW). This plant, which is expected to take three years to build, would add up to 20,000 jobs to the local economy.

- **8K Miles Mgt Guideline** : Company expects to be able to sustain current level of margins on the back of new product launches lined up for the next few quarters. The company's third quarter EBITDA margin stood at 36 percent versus 31.2 percent quarter-on-quarter (QoQ).Mgt expects margins to increase in the next few quarters. Company company has no plans to raise capital, but may explore going ahead. Mgt is also evaluating more options on the acquisition front.

- **U.K. manufacturing production** rose to a seasonally adjusted 0.7%, from -0.7% in the preceding month. Analysts had expected U.K. manufacturing production to rise 0.3% last month.

- **Czech CPI** fell to a seasonally adjusted -0.1%, from -0.2% in the preceding quarter. Analysts had expected Czech CPI to fall -0.1% in the last quarter.

- **Norwegian CPI** remained unchanged at a seasonally adjusted 0.0%, from 0.1% in the preceding month. Analysts had expected Norwegian CPI to remain unchanged at 0.0% last month.

- **U.K. trade balance** rose to a seasonally adjusted -8.85B, from -9.84B in the preceding month whose figure was revised down from -9.62B. Analysts had expected U.K. trade balance to rise to -9.40B last month.

Result Calendar Q3FY15

Bse Coade	Company Name	Date	Bse Coade	Company Name	Date
532406	AVANTEL	12-Jan-15	534060	PMCFIN	16-Jan-15
517326	CMC	12-Jan-15	512591	PULSRIN	16-Jan-15
521248	KITEX	12-Jan-15	513406	RAIPF	16-Jan-15
532131	TRIUMPIN	12-Jan-15	500325	RELIANCE	16-Jan-15
538611	ASSCERL	13-Jan-15	517447	RSSOFTWARE	16-Jan-15
532772	DCBBANK	13-Jan-15	530017	SIL	16-Jan-15
538708	ETIL	13-Jan-15	512197	SILVERO	16-Jan-15
532285	GEOJITBNPP	13-Jan-15	504180	STDBAT	16-Jan-15
532187	INDUSINDBK	13-Jan-15	530445	SUMERUIND	16-Jan-15
534690	LAKSHVILAS	13-Jan-15	531295	SUNLAKE	16-Jan-15
500266	MAHSCOOTER	13-Jan-15	532953	VGUARD	16-Jan-15
531212	NALINLEA	13-Jan-15	507685	WIPRO	16-Jan-15
523445	RIIL	13-Jan-15	500173	GUJFLUORO	17-Jan-15
504960	STEWARTQ-\$	13-Jan-15	517571	INDLMETER	17-Jan-15
505036	ACGL-\$	14-Jan-15	532720	M&MFIN	17-Jan-15
532978	BAJAFINSV	14-Jan-15	531572	RANJITSE	17-Jan-15
500034	BAJFINANCE	14-Jan-15	506105	STANROS	17-Jan-15
509069	INFOMEDIA	14-Jan-15	517385	SYMPHONY	17-Jan-15
500233	KAJARIACER	14-Jan-15	506690	UNICHEMLAB	17-Jan-15
500253	LICHSGFIN	14-Jan-15	524661	WELCURE	17-Jan-15
532798	NETWORK18	14-Jan-15	523229	BHARATSE-\$	19-Jan-15
532541	NIITTECH	14-Jan-15	532346	BLUESTINFO	19-Jan-15
526893	SRINIHAT-\$	14-Jan-15	519600	CCL	19-Jan-15
532790	TANLA	14-Jan-15	501833	CHOWGULSTM	19-Jan-15
532800	TV18BRDCST	14-Jan-15	532491	ECEIND-\$	19-Jan-15
532893	VTMLTD	14-Jan-15	530655	GOODLUC	19-Jan-15
532648	YESBANK	14-Jan-15	511288	GRUH	19-Jan-15
505665	ABCBEARS-\$	15-Jan-15	507960	GUJHOTE	19-Jan-15
532977	BAJAJ-AUTO	15-Jan-15	500183	HFCL	19-Jan-15
500490	BAJAJHLDNG	15-Jan-15	509675	HIL	19-Jan-15
532175	CYIENT	15-Jan-15	500696	HINDUNILVR	19-Jan-15
533151	DBCORP	15-Jan-15	500188	HINDZINC	19-Jan-15
500469	FEDERALBNK	15-Jan-15	532960	IBSEC	19-Jan-15
533896	FERVENTSYN	15-Jan-15	535789	IBULHSGFIN	19-Jan-15
500187	HSIL	15-Jan-15	533257	INDOSOLAR	19-Jan-15
533344	PFS	15-Jan-15	500213	ITHL-\$	19-Jan-15
519234	SIEL	15-Jan-15	524378	JMDEPACKR	19-Jan-15
531307	SRK	15-Jan-15	500262	MAFATLAFIN	19-Jan-15
532540	TCS	15-Jan-15	532819	MINDTREE	19-Jan-15
532166	ALKASEC	16-Jan-15	532777	NAUKRI	19-Jan-15
522134	ARTSONEN	16-Jan-15	532663	SASKEN	19-Jan-15
526847	ASHSI	16-Jan-15	517320	SAVINFOCO	19-Jan-15
532215	AXISBANK	16-Jan-15	507984	SERIND	19-Jan-15
530457	CINERAD	16-Jan-15	513262	SSWL	19-Jan-15
511072	DHFL	16-Jan-15	513010	TATASPONGE	19-Jan-15
500033	FORCEMOT	16-Jan-15	506680	TRELICHE-B	19-Jan-15
532706	INOXLEISUR	16-Jan-15	533644	UJAAS	19-Jan-15
524270	MAGNACOL	16-Jan-15	531390	UPSURGE	19-Jan-15
500304	NIITLTD	16-Jan-15	531950	VERTEX	19-Jan-15
533273	OBEROIRLTY	16-Jan-15	538465	AMARSEC	20-Jan-15

532694	BARTRONICS	20-Jan-15	531548	SOMANYCERA	22-Jan-15
500042	BASF	20-Jan-15	524542	SUKHIITS-\$	22-Jan-15
511196	CANFINHOME	20-Jan-15	509930	SUPREMEIND	22-Jan-15
506365	CHEMOPH	20-Jan-15	512257	SVARTCORP	22-Jan-15
533217	HMVL	20-Jan-15	510245	SWASTIVI	22-Jan-15
530055	HRMNYCP	20-Jan-15	532262	TCIIND	22-Jan-15
532642	JSWHL	20-Jan-15	509966	VSTIND	22-Jan-15
533293	KIRLOSENG	20-Jan-15	532794	ZEEMEDIA	22-Jan-15
500247	KOTAKBANK	20-Jan-15	523411	ADCINDIA	23-Jan-15
532504	NAVINFLUOR	20-Jan-15	500027	ATUL	23-Jan-15
522205	PRAJIND	20-Jan-15	503960	BBL-\$	23-Jan-15
500355	RALLIS	20-Jan-15	500049	BEL	23-Jan-15
532692	RMCL	20-Jan-15	530803	BHAGERIA	23-Jan-15
536666	SFCL	20-Jan-15	500830	COLPAL	23-Jan-15
532218	SOUTHBANK	20-Jan-15	506395	COROMANDEL	23-Jan-15
531581	ALKADIA	21-Jan-15	532922	EDELWEISS	23-Jan-15
500012	ANDHRAPET	21-Jan-15	523754	EPCIN	23-Jan-15
500067	BLUESTARCO	21-Jan-15	506528	KELENRG	23-Jan-15
532548	CENTURYPLY	21-Jan-15	526596	LIBERTSHOE	23-Jan-15
508906	EVERESTIND	21-Jan-15	530175	ODYSSEY-\$	23-Jan-15
531807	INGVYSYABK	21-Jan-15	500314	ORIENTHOT	23-Jan-15
500214	IONEXCHANG-\$	21-Jan-15	532987	RBL	23-Jan-15
590053	KARMOB-\$	21-Jan-15	511640	SANGHCO	23-Jan-15
532400	KPIT	21-Jan-15	523363	STERLINH	23-Jan-15
533519	L&TFH	21-Jan-15	533023	WABCOINDIA	23-Jan-15
532654	MCLEODRUSS	21-Jan-15	533179	PERSISTENT	24-Jan-15
523828	MENONBE-\$	21-Jan-15	511218	SRTRANSFIN	24-Jan-15
532988	RANEENGINE	21-Jan-15	512313	BIJLTEX	27-Jan-15
500408	TATAELXSI	21-Jan-15	500110	CHENNPETRO	27-Jan-15
507747	TTKHEALTH	21-Jan-15	511243	CHOLAFIN	27-Jan-15
517506	TTKPRESTIG	21-Jan-15	500690	GSFC	27-Jan-15
514142	TTL-\$	21-Jan-15	512329	JARITEX	27-Jan-15
505537	ZEEL	21-Jan-15	532652	KTKBANK	27-Jan-15
504988	ZWELCAST	21-Jan-15	524103	LINEARPO	27-Jan-15
526397	ALPHAGEO-\$	22-Jan-15	532500	MARUTI	27-Jan-15
512247	ASHCAP	22-Jan-15	512115	ROSEMER	27-Jan-15
500215	ATFL	22-Jan-15	512309	ROSETEX	27-Jan-15
526849	BANARBEADS	22-Jan-15	516108	STHINPA	27-Jan-15
532523	BIOCON	22-Jan-15	524129	VINYLINDIA	27-Jan-15
532792	CAIRN	22-Jan-15	505412	WENDT	27-Jan-15
506401	DEEPAKNI	22-Jan-15	512297	WHELTEX	27-Jan-15
519588	DFM	22-Jan-15	506767	ALKYLAMINE	28-Jan-15
532839	DISHTV	22-Jan-15	531162	EMAMILTD	28-Jan-15
502330	IPAPPM	22-Jan-15	531600	GOGIACAP	28-Jan-15
505283	KIRLPNU	22-Jan-15	532482	GRANULES	28-Jan-15
523704	MASTEK	22-Jan-15	531319	MARUTISE	28-Jan-15
533088	MHRIL	22-Jan-15	500730	NOCIL	28-Jan-15
500162	PARRYSUGAR	22-Jan-15	500359	RANBAXY	28-Jan-15
506590	PHILIPCARB	22-Jan-15	500420	TORNTPHARM	28-Jan-15
532254	POLARIS	22-Jan-15	500477	ASHOKLEY	29-Jan-15
532661	RML	22-Jan-15	526187	ASHRAM	29-Jan-15
507894	SCHABLON	22-Jan-15	500820	ASIANPAINT	29-Jan-15

500124	DRREDDY	29-Jan-15	532755	TECHM	30-Jan-15
500133	ESABINDIA	29-Jan-15	524038	VENLONENT	30-Jan-15
506803	FULFORD	29-Jan-15	590013	XPROINDIA	30-Jan-15
500010	HDFC	29-Jan-15	531519	ANKUSHFI	31-Jan-15
532835	ICRA	29-Jan-15	526125	ARHNTTO	31-Jan-15
532659	IDFC	29-Jan-15	502216	BOMBPOT	31-Jan-15
532150	INDRAMEDCO	29-Jan-15	521216	DHANROTO	31-Jan-15
511208	IVC	29-Jan-15	503796	DIGJAM	31-Jan-15
523592	JENSONICOL	29-Jan-15	531533	ECOM	31-Jan-15
523207	KOKUYOCMLN	29-Jan-15	531608	GORANIN	31-Jan-15
523323	KOVAI	29-Jan-15	530915	JRFOODS	31-Jan-15
530139	KREONFIN	29-Jan-15	514448	JYOTIRES	31-Jan-15
500313	OILCOUNTUB	29-Jan-15	508993	KEDIACN	31-Jan-15
505827	SNL	29-Jan-15	530243	MANGASOF	31-Jan-15
521228	TATIAGLOB	29-Jan-15	531221	MAYURFL	31-Jan-15
500414	TIMEX-\$	29-Jan-15	526251	MIDEASTP	31-Jan-15
504966	TINPLATE	29-Jan-15	505594	MULTIIN	31-Jan-15
512117	TWIROST	29-Jan-15	508875	NITINALOY	31-Jan-15
532156	VAIBHAVGBL	29-Jan-15	520073	RAUNAQAU	31-Jan-15
512511	VARUNME	29-Jan-15	532527	RKFORGE	31-Jan-15
521097	AMARJOTHI	30-Jan-15	522152	SOLIMAC	31-Jan-15
509480	BERGEPAIN	30-Jan-15	531814	TIRSARJ	31-Jan-15
526269	CRSTCHM	30-Jan-15	532779	TORNTPOWER	31-Jan-15
500096	DABUR	30-Jan-15	520119	ASAL	02-Feb-15
532927	ECLERX	30-Jan-15	511676	GICHSGFIN	02-Feb-15
503681	ELCIDIN	30-Jan-15	500252	LAXMIMACH	02-Feb-15
532281	HCLTECH	30-Jan-15	532915	RELIGARE	02-Feb-15
519552	HERITGFOOD	30-Jan-15	512527	SUPER-\$	02-Feb-15
532174	ICICIBANK	30-Jan-15	500645	DEEPAKFERT	03-Feb-15
538835	INTELLECT	30-Jan-15	530835	ELTROL	03-Feb-15
506161	ISHWATR	30-Jan-15	533047	IMFA	03-Feb-15
500228	JSWSTEEL	30-Jan-15	531528	MAARSOFTW	03-Feb-15
500165	KANSAINER	30-Jan-15	534369	TBZ	03-Feb-15
511138	KOTHARIFIN	30-Jan-15	522113	TIMKEN	03-Feb-15
532313	MAHLIFE	30-Jan-15	530889	ALKA	04-Feb-15
526891	MKTCREAT	30-Jan-15	532047	ASIANFILMS	04-Feb-15
509196	MMRUBBR-B	30-Jan-15	522261	DOLPHINOFF-\$	04-Feb-15
509760	MODRNSH	30-Jan-15	506943	JBCHEPHARM	04-Feb-15
524084	MONSANTO	30-Jan-15	507779	KANPRPLA	04-Feb-15
531049	NEELKAN	30-Jan-15	500400	TATAPOWER	04-Feb-15
500452	NEPCAGRO	30-Jan-15	532173	CYBERTECH	05-Feb-15
500301	NEPCMICON	30-Jan-15	532424	GODREJCP	05-Feb-15
531077	NEPCPAPER	30-Jan-15	524709	NAGAAGRI	05-Feb-15
521192	NEPCTEX	30-Jan-15	500260	RAMCOCEM	05-Feb-15
511702	PARSHINV	30-Jan-15	531179	ARMANFIN	06-Feb-15
530253	RAJTUBE	30-Jan-15	532834	CAMLINFIN	06-Feb-15
511403	SAIJEEV	30-Jan-15	500085	CHAMBLFERT	06-Feb-15
531893	SAWABUSI	30-Jan-15	517344	MINDTECK	06-Feb-15
523790	SHUKJEW	30-Jan-15	532460	PONNIERODE	06-Feb-15
530439	SIDDHA	30-Jan-15	530307	CHAMANSEQ-\$	07-Feb-15
531506	SKRABUL	30-Jan-15	531599	FDC	07-Feb-15
501110	SUNRINV	30-Jan-15	517300	GIPCL	07-Feb-15

532644	JKCEMENT	07-Feb-15	535658	PAWANSUT	12-Feb-15
526947	LAOPALA	07-Feb-15	517203	BEELE	13-Feb-15
516030	YASHPPR-\$	07-Feb-15	532324	CINEVISTA	13-Feb-15
530233	AUROLAB	09-Feb-15	512213	CLASELE	13-Feb-15
534804	CARERATING	10-Feb-15	530171	DAULAT	13-Feb-15
523736	DPL	10-Feb-15	531252	FARRYIND	13-Feb-15
526721	NICOPAR-\$	10-Feb-15	534757	FOCUSIRL	13-Feb-15
512099	PUNITCO	10-Feb-15	531196	GAGANPO	13-Feb-15
517496	RICOHQ	10-Feb-15	531918	HINDAPL	13-Feb-15
511185	SURYAKR	10-Feb-15	500202	INDLEASE	13-Feb-15
500780	ZUARIGLOB	10-Feb-15	504840	KAIRA	13-Feb-15
519174	ASHAI	11-Feb-15	501343	MOTOGENFIN	13-Feb-15
520151	SHREYAS	11-Feb-15	534184	NAGAROIL	13-Feb-15
512153	SPECMKT	11-Feb-15	507952	SHIKHARLETR	13-Feb-15
508939	BLCISER	12-Feb-15	506655	SUDARSCHEM	13-Feb-15
530779	DYNAMICP	12-Feb-15	532133	IFGLREFRAC	14-Feb-15
531463	GBLINFRA	12-Feb-15	530125	SAMRATPH-\$	14-Feb-15
507815	GILLETTE	12-Feb-15	500425	AMBUJACEM	18-Feb-15

Result Q3FY15

BSE Code	NSE Code	Sales (Cr.)	Sales Growth(%)	PAT(Cr.)	PAT Growth (%)
512161	8KMILES	34.5	232.7	5.4	174.5
500209	INFY	13796	5.9	3250	13
533229	BAJAJCORP	205	30	41.84	44
533389	SHILPI	859.68	92	40.02	26.9
507488	GMBREW	78.77	2.471	6.05	41.025
538771	PINCON	148.17	59.43	3.62	74.88

Economic Calendar

	Monday 12-Jan-15	Tuesday 13-Jan-15	Wednesday 14-Jan-15	Thursday 15-Jan-15	Friday 16-Jan-15
US	10-y Bond Auction .	JOLTS Job Openings .	Core Retail Sales m/m , Retail Sales m/m , Import Prices m/m , Business Inventories m/m .	PPI m/m , Unemployment Claims , Core PPI m/m , Empire State Manufacturing Index , NAHB Housing Market Index .	CPI m/m , Core CPI m/m , Capacity Utilization Rate , Industrial Production m/m , Prelim UoM Consumer Sentiment , Prelim UoM Inflation Expectations , TIC Long-Term Purchases .
UK/EURO ZONE	Italian Industrial Production m/m .	CPI y/y , PPI Input m/m , RPI y/y .	Industrial Production m/m , CB Leading Index m/m .	German WPI m/m .	Final CPI y/y , French Gov Budget Balance , German Final CPI m/m .
INDIA	IIP Data , CPI Data		WPI Data .		



Narnolia Securities Ltd

124, 1st floor 7/ 1, Lords Sinha Road Kolkata 700071, Ph 033-22821251 Toll Free no : 1-800-345-4000

email: research@narnolia.com,

website : www.narnolia.com

Risk Disclosure & Disclaimer: This report/message is for the personal information of the authorized recipient and does not construe to be any investment, legal or taxation advice to you. Narnolia Securities Ltd. (Hereinafter referred as NSL) is not soliciting any action based upon it. This report/message is not for public distribution and has been furnished to you solely for your information and should not be reproduced or redistributed to any other person in any form. The report/message is based upon publicly available information, findings of our research wing "East wind" & information that we consider reliable, but we do not represent that it is accurate or complete and we do not provide any express or implied warranty of any kind, and also these are subject to change without notice. The recipients of this report should rely on their own investigations, should use their own judgment for taking any investment decisions keeping in mind that past performance is not necessarily a guide to future performance & that the the value of any investment or income are subject to market and other risks. Further it will be safe to assume that NSL and /or its Group or associate Companies, their Directors, affiliates and/or employees may have interests/ positions, financial or otherwise, individually or otherwise in the recommended/mentioned securities/mutual funds/ model funds and other investment products which may be added or disposed including & other mentioned in this report/message.