

SGX NIFTY : 7580 (5 Pt Down)

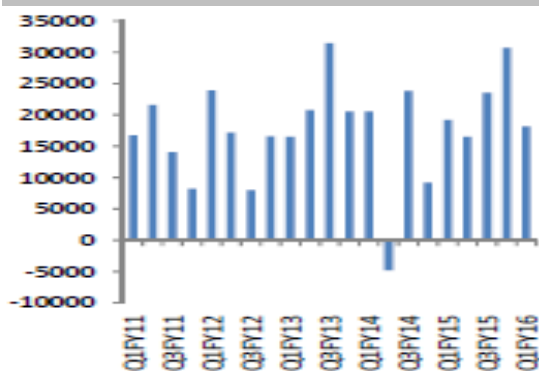
Quote of the Day

"Mathematics is ordinarily considered as producing precise and dependable results; but in the stock market the more elaborate and abstruse the mathematics, the more uncertain and speculative are the conclusions we draw there from."

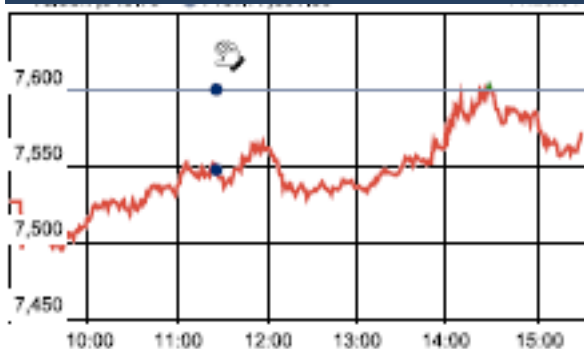
Benjamin Graham

Chart of the Day

Indian Capital Flow Trend



Index Action Nifty (11th Jan 16)



Index

Contents	Page	Coverage
News	2	Update
Economic Calendar	3	Update

Market

Name	Value	Change
Sensex	24,825.04	(109.29)
Nifty	7563.85	(37.50)
DOW	16,398.57	52.12
NASDAQ	4,637.99	(5.64)
CAC	4,312.74	(21.02)
DAX	9,825.01	(24.27)
FTSE	5,871.83	(40.61)
NIKKIE	17,364.03	(333.93)
HANG SENG	19,942.60	54.10
EW ALL SHARE	13535.48	(86.62)

Instituional Turnover

FII

Investor	Buy(Cr.)	Sale(Cr.)	Net(Cr.)
11-Jan-16	3157.82	4477.06	(1319.24)
Jan,16	21022.46	25664.33	(4641.87)
2016	10792.37	8188.01	2604.36

DII

Investor	Buy(Cr.)	Sale(Cr.)	Net(Cr.)
11-Jan-16	1848.47	947.48	900.99
Jan,16	21022.46	25664.33	(4641.87)
2016	10792.37	8188.01	2604.36

Commodity Price

Commodity/Currencies	Value	
GOLD	25870.00	↓
SILVER	33664.00	↓
CRUDEOIL	31.12	↓
COPPER	293.80	↓
NATURALGAS	159.30	↓
DOLLAR/RS.	66.77	↓
EURO/RS.	72.61	↑
POUND/RS.	97.05	↑

Market Snapshot

Top Price Performers

Top Performers 1D	% Change	Top Performers 1W	% Change	Top Performers 1M	% Change
SMOBILITY	19.95	SURANACORP	65.93	SPENTEX	123.81
EMPEESUG	19.91	WESTE	42.71	EKC	120.38
INDSWFTLAB	13.88	SHIV-VANI	39.14	ZYLOG	111.60
WESTE	13.48	EMPEESUG	38.66	SUDAR	99.12
NITINSPIN	12.86	MUKTAARTS	38.41	SURANACORP	97.39

Worst Performers 1D	% Change	Worst Performers 1W	% Change	Worst Performers 1M	% Change
MIC	(14.02)	ESSDEE	(41.26)	ESSDEE	(43.93)
CRANESSOFT	(9.64)	EUROCERA	(22.36)	OUTCTYTRVL	(31.69)
ESSDEE	(8.56)	PARACABLES	(22.16)	SHRENUJ	(28.26)
REMIMETAL	(8.17)	OUTCTYTRVL	(20.51)	SUNILHITEC	(20.89)
NUTEK	(8.08)	VALECHAENG	(20.25)	CADILAHC	(20.67)

Top News

- Bharat Heavy Electricals Ltd (BHEL)** said it has commissioned a 520-mw coal-based thermal power unit in Andhra Pradesh. The unit has been commissioned at the 2x520 mw Vizag Thermal Power Project of Hinduja National Power Company Limited (HNPC), Visakhapatnam . Significantly, in Visakhapatnam district, four 500 mw thermal sets supplied and executed by BHEL are already in successful operation at Simhadri Super Thermal Power Station of NTPC . The 2x520 mw Vizag thermal power project is being executed by BHEL on engineering, procurement and construction (EPC) basis
- Cadila Healthcare** said it has received Establishment Inspection Report (EIR) for Baddi manufacturing plant from the US health regulator after successful inspection closure. This will now pave the way for further approval of products from this site . The company makes formulations at its Baddi manufacturing facility. Establishment Inspection Report is given to an establishment after the completion of the inspection by the FDA.
- SriCity Special Economic Zone** said it has signed pacts with 11 companies, including Colgate Palmolive, pledging investment of about Rs 1,215 crore that will result in the creation of 4,000 jobs. The highest amount of investment is pledged by Colgate Pamolive at Rs 450 crore followed by Thermax (Rs 200 crore), Isuzu , Bachawat Enterprises (Rs 25 crore), Aero Piston (Rs 20 crore), Nucleas (Rs 20 crore), Valmat (Rs 10 crore) MSR Garments (Rs 10 crore), UNP (Rs 20 crore) and Red Star Plastick (Rs 10 crore).
- Maruti** sold 40,000 units of the S Cross and Baleno through the NEXA showrooms since launching the concept in last July. While sales were slow when the outlets were launched simultaneously with the S Cross .
- Adani Ports and Special Economic Zone Ltd** plans to raise Rs 4,500 crore through long-term debentures. The aim is to reduce short-term debt and finance projects, including those at Mundra in Gujarat.
- Time Technoplast Mgt Guideline** : Company has launched composite plastic LPG cylinders under the name of "LiteSafe". Time Technoplast will generate Rs 35 crore revenues in FY16 and Rs 170 crore in FY17 from composite cylinders. Company expects larger order for plastic cylinders post successful trial by March 16.
- Aurobindo Pharma Limited** is pleased to announce that the company has received final approval from the US Food & Drug Administration (USFDA) to manufacture and market Norethindrone Acetate Tablets USP, 5mg.
- Spanish Industrial Production** rose to 4.2%, from 4.1% in the preceding month whose figure was revised up from 4.0%. Analysts had expected Spanish Industrial Production to fall to 3.8% last month.
- National Bureau of Statistics of China** said that Chinese PPI remained unchanged at an annual rate of -5.9%, from -5.9% in the preceding month. Analysts had expected Chinese PPI to rise to -5.8% last month.
- U.S. Wholesale Inventories** fell to a seasonally adjusted annual rate of -0.3%, from -0.3% in the preceding quarter whose figure was revised down from -0.1%. Analysts had expected U.S. Wholesale Inventories to fall -0.1% in the last quarter.
- U.S. Department of Labor said the unemployment rate** remained unchanged at a seasonally adjusted 5.0%, from 5.0% in the preceding month . Analysts had expected the U.S. unemployment rate to remain unchanged at 5.0% last month.
- Norwegian CPI** fell to a seasonally adjusted -0.4%, from 0.4% in the preceding month. Analysts had expected Norwegian CPI to fall -0.2% last month.
- U.S. Wholesale Inventories** fell to a seasonally adjusted annual rate of -0.3%, from -0.3% in the preceding quarter whose figure was revised down from -0.1%.

Result Calendar Q3FY16

BSE Code	Company Name	Date	BSE Code	Company Name	Date
532772	DCBBANK	12-Jan-16	520066	JAYBARMARU	16-Jan-16
500469	FEDERALBNK	12-Jan-16	532652	KTKBANK	16-Jan-16
534757	FOCUSIRL	12-Jan-16	533602	LESHAIND	16-Jan-16
532187	INDUSINDBK	12-Jan-16	500253	LICHSGFIN	16-Jan-16
531648	MAHAVIRIND	12-Jan-16	517320	SAVINFOCO	16-Jan-16
532540	TCS	12-Jan-16	511756	ABIRAFN	18-Jan-16
531390	UPSURGE	12-Jan-16	526847	ASHSI	18-Jan-16
539222	VMV	12-Jan-16	500820	ASIANPAINT	18-Jan-16
531247	ALPHA	13-Jan-16	503960	BBL	18-Jan-16
535486	DELTALTD	13-Jan-16	532848	DELTACORP	18-Jan-16
508906	EVERESTIND	13-Jan-16	500186	HINDOILEXP	18-Jan-16
590003	KARURVYSYA	13-Jan-16	500247	KOTAKBANK	18-Jan-16
531212	NALINLEA	13-Jan-16	532819	MINDTREE	18-Jan-16
539016	NEIL	13-Jan-16	500355	RALLIS	18-Jan-16
535658	PAWANSUT	13-Jan-16	520086	SICAL	18-Jan-16
523445	RIIL	13-Jan-16	513262	SSWL	18-Jan-16
538611	RTFL	13-Jan-16	513434	TATAMETALI	18-Jan-16
533101	SURYAAMBA	13-Jan-16	504966	TINPLATE	18-Jan-16
538465	AMARSEC	14-Jan-16	517506	TTKPRESTIG	18-Jan-16
590122	ASHIKACR	14-Jan-16	539331	VETO	18-Jan-16
532175	CYIENT	14-Jan-16	507685	WIPRO	18-Jan-16
590080	EASTERNGAS	14-Jan-16	531147	ALICON	19-Jan-16
538708	ETIL	14-Jan-16	522134	ARTSONEN	19-Jan-16
500209	INFY	14-Jan-16	531340	BERVINL	19-Jan-16
526865	JAINCO	14-Jan-16	526797	GREENPLY	19-Jan-16
532637	MANGALAM	14-Jan-16	532281	HCLTECH	19-Jan-16
523704	MASTEK	14-Jan-16	500188	HINDZINC	19-Jan-16
533399	PARAPRINT	14-Jan-16	532742	PAUSHAKLTD	19-Jan-16
500337	PRIMESECU	14-Jan-16	524570	PODARPIGQ	19-Jan-16
501833	CHOWGULSTM	15-Jan-16	532215	AXISBANK	20-Jan-16
531471	DUKEOFS	15-Jan-16	511072	DHFL	20-Jan-16
511288	GRUH	15-Jan-16	513108	GANDHITUBE	20-Jan-16
506879	GUJTHEM	15-Jan-16	532345	GATI	20-Jan-16
500696	HINDUNILVR	15-Jan-16	533148	JSWENERGY	20-Jan-16
500850	INDHOTEL	15-Jan-16	532400	KPIT	20-Jan-16
507948	KEYCORP	15-Jan-16	500262	MAFATLAFIN	20-Jan-16
500458	KORE	15-Jan-16	523828	MENONBE	20-Jan-16
512455	LLOYDSME	15-Jan-16	531209	NUCLEUS	20-Jan-16
511000	MADHUSE	15-Jan-16	532218	SOUTHBANK	20-Jan-16
511766	MUTHTFN	15-Jan-16	500408	TATAELXSI	20-Jan-16
532541	NIITTECH	15-Jan-16	513010	TATASPONGE	20-Jan-16
533273	OBEROIRLTY	15-Jan-16	532538	ULTRACEMCO	20-Jan-16
533107	PIPAVAVDOC	15-Jan-16	533573	APLLTD	21-Jan-16
507649	RASOI	15-Jan-16	500215	ATFL	21-Jan-16
590005	TIDEWATER	15-Jan-16	532523	BIOCON	21-Jan-16
511736	USHDI	15-Jan-16	506365	CHEMOPH	21-Jan-16
505537	ZEEL	15-Jan-16	500645	DEEPAKFERT	21-Jan-16

523708	EIMCOELECO	21-Jan-16	512115	ROSEMER	27-Jan-16
500086	EXIDEIND	21-Jan-16	507984	SERIND	27-Jan-16
500150	FOSECOIND	21-Jan-16	532432	UNITDSPR	27-Jan-16
519552	HERITGFOOD	21-Jan-16	500096	DABUR	28-Jan-16
502330	IPAPPM	21-Jan-16	500171	GHCL	28-Jan-16
532720	M&MFIN	21-Jan-16	531600	GOGIACAP	28-Jan-16
539268	SYNGENE	21-Jan-16	532174	ICICIBANK	28-Jan-16
501242	TCIFINANCE	21-Jan-16	505750	JOSTS	28-Jan-16
509966	VSTIND	21-Jan-16	532926	JYOTHYLAB	28-Jan-16
523411	ADCINDIA	22-Jan-16	501874	MACKINN	28-Jan-16
500027	ATUL	22-Jan-16	500264	MAFATIND	28-Jan-16
532792	CAIRN	22-Jan-16	532313	MAHLIFE	28-Jan-16
500147	CMIFPE	22-Jan-16	531319	MARUTISE	28-Jan-16
506395	COROMANDEL	22-Jan-16	509196	MMRUBBR-B	28-Jan-16
533088	MHRIL	22-Jan-16	532777	NAUKRI	28-Jan-16
504398	SJCORP	22-Jan-16	500313	OILCOUNTUB	28-Jan-16
506680	TRELCHE-B	22-Jan-16	511702	PARSHINV	28-Jan-16
524019	HYDROS&S	23-Jan-16	532987	RBL	28-Jan-16
533179	PERSISTENT	23-Jan-16	532812	TFL	28-Jan-16
524037	RAMAPHO	23-Jan-16	590013	XPROINDIA	28-Jan-16
517447	RSSOFTWARE	23-Jan-16	521097	AMARJOTHI	29-Jan-16
506690	UNICHEMLAB	23-Jan-16	500067	BLUESTARCO	29-Jan-16
520119	ASAL	25-Jan-16	534804	CARERATING	29-Jan-16
512313	BIJLTEX	25-Jan-16	511243	CHOLAFIN	29-Jan-16
533167	COROENGG	25-Jan-16	532927	ECLERX	29-Jan-16
500180	HDFCBANK	25-Jan-16	505700	ELECON	29-Jan-16
533217	HMVL	25-Jan-16	505714	GABRIEL	29-Jan-16
530055	HRMNYCP	25-Jan-16	511676	GICHSGFIN	29-Jan-16
538835	INTELLECT	25-Jan-16	500228	JSWSTEEL	29-Jan-16
500165	KANSAINER	25-Jan-16	523207	KOKUYOCLN	29-Jan-16
500241	KIRLOSBROS	25-Jan-16	532504	NAVINFLUOR	29-Jan-16
517449	MAGNAELQ	25-Jan-16	504112	NELCO	29-Jan-16
532661	RML	25-Jan-16	506590	PHILIPCARB	29-Jan-16
512309	ROSETEX	25-Jan-16	532498	SHRIRAMCIT	29-Jan-16
532156	VAIBHAVGBL	25-Jan-16	538876	STSERV	29-Jan-16
505412	WENDT	25-Jan-16	501110	SUNRINV	29-Jan-16
532774	AFL	27-Jan-16	532390	TAJGVK	29-Jan-16
500049	BEL	27-Jan-16	532953	VGUARD	29-Jan-16
500830	COLPAL	27-Jan-16	526125	ARHNTTO	30-Jan-16
507886	DHRUVES	27-Jan-16	526187	ASHRAM	30-Jan-16
523736	DPL	27-Jan-16	530803	BHAGIL	30-Jan-16
533208	EMAMIPAP	27-Jan-16	521216	DHANROTO	30-Jan-16
532424	GODREJCP	27-Jan-16	531533	ECOM	30-Jan-16
509488	GRAPHITE	27-Jan-16	523754	EPCIN	30-Jan-16
500010	HDFC	27-Jan-16	514448	JYOTIRES	30-Jan-16
532662	HTMEDIA	27-Jan-16	530139	KREONFIN	30-Jan-16
533293	KIRLOSENG	27-Jan-16	530243	MANGASOF	30-Jan-16
500730	NOCIL	27-Jan-16	531221	MAYURFL	30-Jan-16
532988	RANEENGINE	27-Jan-16	514460	OSWAYRN	30-Jan-16

511403	SAJEEV	30-Jan-16	532460	PONNIERODE	5-Feb-16
539217	SRESTHA	30-Jan-16	530073	SANGHVIMOV	5-Feb-16
521234	SRINACHA	30-Jan-16	514142	TTL	5-Feb-16
506655	SUDARSCHEM	30-Jan-16	531599	FDC	6-Feb-16
521228	TATIAGLOB	30-Jan-16	532133	IFGLREFRAC	6-Feb-16
539488	TFLL	30-Jan-16	523323	KOVAI	6-Feb-16
524038	VENLONENT	30-Jan-16	524709	NAGAAGRI	6-Feb-16
538873	WINYCOMM	30-Jan-16	530233	AUROLAB	9-Feb-16
526831	NAINAMS	31-Jan-16	530609	CARNATIN	9-Feb-16
514045	BSL	1-Feb-16	505800	RANEHOLDIN	9-Feb-16
532349	TCI	1-Feb-16	522113	TIMKEN	9-Feb-16
533393	TCIDEVELOP	1-Feb-16	511742	CHOKSEC	10-Feb-16
500280	CENTENKA	2-Feb-16	500660	GLAXO	10-Feb-16
500266	MAHSCOOTER	2-Feb-16	509162	INDAG	10-Feb-16
532978	BAJAFINSV	3-Feb-16	530669	PRESOFI	10-Feb-16
500034	BAJFINANCE	3-Feb-16	524542	SUKHJITS	10-Feb-16
506943	JBCHEPHARM	3-Feb-16	532097	MUKANDENGG	11-Feb-16
526947	LAOPALA	3-Feb-16	500338	PRISMCEM	11-Feb-16
500252	LAXMIMACH	3-Feb-16	514440	BPTX	12-Feb-16
532915	RELIGARE	3-Feb-16	530171	DAULAT	12-Feb-16
500387	SHREECEM	3-Feb-16	532425	GULCHEM	12-Feb-16
512527	SUPER	3-Feb-16	500202	INDLEASE	12-Feb-16
507747	TTKHEALTH	3-Feb-16	500520	M&M	12-Feb-16
532977	BAJAJ-AUTO	4-Feb-16	531213	MANAPPURAM	12-Feb-16
500490	BAJAJHLDNG	4-Feb-16	501343	MOTOGENFIN	12-Feb-16
509480	BERGEPAIN	4-Feb-16	500790	NESTLEIND	12-Feb-16
532173	CYBERTECH	4-Feb-16	523642	PIIND	12-Feb-16
522261	DOLPHINOFF	4-Feb-16	511644	OMEGAIN	13-Feb-16
526299	MPHASIS	4-Feb-16	532756	MAHINDCIE	22-Feb-16
500470	TATASTEEL	4-Feb-16	520113	VESUVIUS	26-Feb-16
500414	TIMEX	4-Feb-16			

Result Q3FY16

NSE CODE	BSE CODE	SALES Rs (cr.)	SALES YOY	PAT Rs Cr	PAT YOY
BAJAJCORP	533229	208.19	10.7	46.78	24.95
SINTEX	502742	1911.95	13.7	145.74	35.7
8KMILES	512161	61.09	125.6	8.74	110.6
MIC	532850	55	48.5	2.2	144.4

Economic Calendar

Country	Monday 11th Jan 16	Tuesday 12th Jan 16	Wednesday 13th Jan 16	Thursday 14th Jan 16	Friday 15th Jan 16
US	Core Retail Sales m/m , PPI m/m , Retail Sales m/m , Core PPI m/m , Prelim UoM Consumer Sentiment , Business Inventories m/m , Prelim UoM Inflation Expectations	JOLTS Job Openings , FOMC Member Fischer Speaks , NFIB Small Business Index .	Crude Oil Inventories , 10-y Bond Auction , Federal Budget Balance .	Unemployment Claims , FOMC Member Bullard Speaks , Import Prices m/m .	Core Retail Sales m/m , PPI m/m , Retail Sales m/m , Core PPI m/m , Empire State Manufacturing Index, Prelim UoM Consumer Sentiment .
UK/EURO ZONE	German Final CPI m/m , German WPI m/m , French CPI m/m , Construction Output m/m , Targeted LTRO .	Manufacturing Production m/m , Industrial Production m/m .	Industrial Production m/m , French CPI m/m , German 10-y Bond Auction .	MPC Official Bank Rate Votes , Monetary Policy Summary , Official Bank Rate , Asset Purchase Facility , MPC Asset Purchase Facility Votes .	ECOFIN Meetings , Trade Balance , BOE Credit Conditions Survey.
INDIA		IIP Data		WPI Data	



SEBI Registered Portfolio Manager

(Regn. No. : INP 000004011)

Narnolia Securities Ltd.

Narnolia Research Lab

Stellar IT Park | 5th Floor | Office Space No. 6 | Tower-II Ind Plot No. C-25 | Sector-62 | Noida | Ph : 0120-4215110

Central Strategy Desk - Kolkata

124 | 1st Floor | 7/1 Lords Sinha Road | Kolkata - 71
Ph : 033-22821500 | M : 93347 14418, 98302 69810