

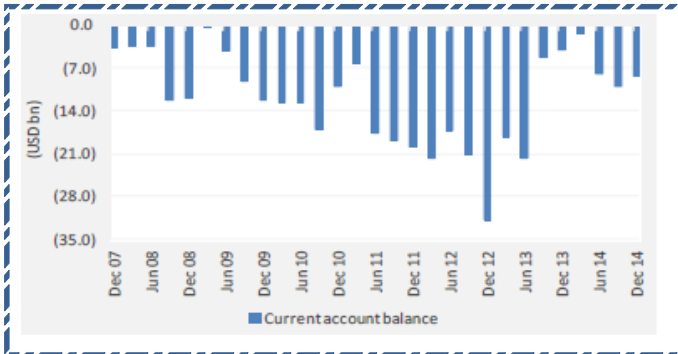
SGX NIFTY : 8758 (4 Pt Up)

Quote of the Day

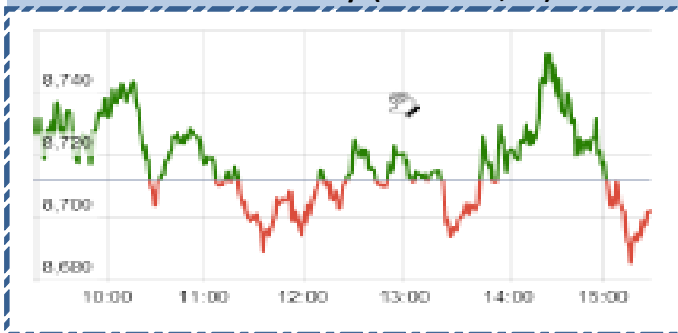
"First, many in Wall Street - a community in which quality control is not prized - will sell investors anything they will buy." **Warren Buffett**

Chart of the Day

Current Account Deficit



Index Action-Nifty (11th Mar, 15)



Index

Contents	Page	Coverage
News	2	UPDATE
Economic Calendar	3	UPDATE

MARKET

Name	Value	Change
Sensex	28659.17	(50.70)
Nifty	8699.17	(12.10)
DOW	17635.39	(27.55)
NASDAQ	4849.94	(9.86)
CAC	4997.75	115.80
DAX	11805.99	305.61
FTSE	6721.51	18.67
NIKKIE	18870.6	147.80
HANG SENG	23717.97	(179.01)
EW ALL SHARE	14711.45	(37.87)

INSTITUTIONAL TURNOVER

FII			
Investor	Buy(Cr.)	Sale(Cr.)	Net(Cr.)
11th Mar	4343.92	4,788.57	(444.65)
Mar,15	39361.93	35,652.62	3709.31
2015	243137.66	2,22,076.41	21061.25
DII			
Investor	Buy(Cr.)	Sale(Cr.)	Net(Cr.)
11th Mar	1697.31	2,036.27	(338.96)
Mar,15	13332.49	13,716.46	(383.97)
2015	87118.88	93,672.30	(6553.42)

COMMODITY PRICE

COMMODITY/CURRENCIES	Value	
GOLD	25685.00	↓
SILVER	35080.00	↓
CRUDEOIL	48.18	↓
COPPER	365.00	↓
NATURALGAS	178.10	↑
DOLLAR/RS.	62.78	↑
EURO/RS.	66.18	↓
POUND/RS.	93.70	↑

Narnolia Securities Ltd.

Markets Snapshot

Top Price Performers

Top Performers 1D	% Change	Top Performers 1W	% Change	Top Performers 1M	% Change
JUBLINDS	19.95	NITESHEST	44.90	WESTE	117.37
MANJEERA	19.80	JUBLINDS	42.14	WANBURY	92.31
IFBAGRO	19.58	AMBIKCO	36.77	ENTEGRA	87.75
IFBIND	19.35	ARSHIYA	32.77	LOGIXMICRO	83.14
RESPONIND	14.19	LOTUSEYE	30.00	TWL	81.44

Worst Price Performers

Worst Performers 1D	% Change	Worst Performers 1W	% Change	Worst Performers 1M	% Change
SUBHKAM	(19.13)	ONELIFECAP	(25.58)	STRAUSIND	(40.57)
MTNL	(18.88)	WINSOMEDJ	(25.00)	SCANPGEOM	(37.67)
ISIBARS	(13.07)	MTNL	(22.32)	GEINDSYS	(34.69)
SMPL	(12.93)	PROVOGE	(22.13)	DIAPOWER	(32.71)
RESTILE	(11.48)	STRAUSIND	(21.25)	KGIND	(32.25)

Top News :

- **NIITTECH Management:** New Deal Wins/Qtr To Exceed \$100 m Run Rate, Expect Improvement In Margins To Conitnue, Expect FY16 Growth To Be Better Than FY15, Gross Margins Improved As Large Projs Became Operational, Seeing A Recovery In US Market, See Cross Currency Impact Of 180-200 bps On Topline in Q4.

- **BHEL** has achieved one more milestone by successfully_ commissioning another 270 MW coal based thermal power plant in Maharashtra. Incidentally, on the same day, BHEL has also commissioned the second 660 MW supercritical thermal unit at NTPG Barh in Bihar.

- **DR.REDDY'S LABORATORIES LTD. Clarification :** News regarding "DRL may Buy UCB's India Ops for \$135m." Company would like to state that company do not comment on market speculations. Any M&A transaction or similar other event, if material in nature, will be communicated to the Stock Exchanges by the Company, at an appropriate time whenever it becomes certain."

- **Crompton Greaves** has been awarded a prestigious contract worth Euro 3.4 million by Saudi Electricity Company to supply ZIV three phase smart meters. the largest power utility company in the Middle East serving approximately five million customers in the Kingdom of Saudi Arabia (KSA), to supply ZIV three phase smart meters. CG has bagged the largest lot for the supply of the first batch of industrial smart meters after months of close dedication from its application and sales team to understand the customer's needs which enabled us to offer a customized and competitive product.

- **West Bengal Electricity Regulatory commission** has approved a multi-year tariff plan of Rs 6.98 per unit. This new tariff order is beneficial to the company as it will give visibility for next two year earnings.

- **Australian Queensland's** new state government cleared plans by two Indian companies Adani Enterprises &GVK expand a port for coal projects that are opposed by green groups worried about pollution and damage to the Great Barrier Reef.

- **The US Food and Drug Administration (USFDA)** has inspected 2 manufacturing units of shilpa medicare at Raichur . Shilpa has filed 10 abbreviated new drug applications (ANDAs) in both injectables and oral division .

- **U.K. manufacturing production** decreased by a seasonally adjusted 0.5% in January, disappointing expectations for an increase of 0.2% and following a 0.1% gain in December.

- **Statistiska Centralbyran** said that Swedish CPI rose to a seasonally adjusted 0.1%, from -0.2% in the preceding month. Analysts had expected Swedish CPI to rise to -0.1% last month.

- **French non-farm payrolls remained** unchanged at a seasonally adjusted 0.0%, from 0.0% in the preceding quarter. Analysts had expected French non-farm payrolls to remain unchanged at 0.0% in the last quarter.

- **Australian Bureau of Statistics** said that Australian home loans fell to a seasonally adjusted -3.5%, from 2.7% in the preceding month. Analysts had expected Australian home loans to fall -2.0% last month.

- **National Statistics Office** said that Philippines Industrial Production fell to a seasonally adjusted annual rate of -1.8%, from 4.2% in the preceding month. Analysts had expected Philippines Industrial Production to rise to 4.9% last month.

Economic Calendar

	Monday 9-Mar-15	Tuesday 10-Mar-15	Wednesday 11-Mar-15	Thursday 12-Mar-15	Friday 13-Mar-15
US	Crude Oil Inventories .	Core Retail Sales m/m ,Retail Sales m/m , Unemployment Claims , Import Prices m/m , Business Inventories m/m Natural Gas Storage .	PPI m/m ,Core PPI m/m , Prelim UoM Consumer Sentiment ,Crude Oil Inventories .	Core Retail Sales m/m , Retail Sales m/m , Unemployment Claims Import Prices m/m ,Business Inventories m/m .	PPI m/m ,Core PPI m/m ,Prelim UoM Consumer Sentiment , Prelim UoM Inflation Expectations .
UK/EURO ZONE	Manufacturing Production m/m , Italian Industrial Production m/m , NIESR GDP Estimate .	Trade Balance , French CPI m/m , French Final Non-Farm Payrolls q/q , Industrial Production m/m .	German Final CPI m/m , Manufacturing Production m/m .	Trade Balance .	
INDIA				IIP Data , CPI Data	



Narnolia Securities Ltd

124, 1st floor 7/ 1, Lords Sinha Road Kolkata 700071, Ph 033-22821251 Toll Free no : 1-800-345-4000

email: research@narnolia.com,

website : www.narnolia.com

Risk Disclosure & Disclaimer: This report/message is for the personal information of the authorized recipient and does not construe to be any investment, legal or taxation advice to you. Narnolia Securities Ltd. (Hereinafter referred as NSL) is not soliciting any action based upon it. This report/message is not for public distribution and has been furnished to you solely for your information and should not be reproduced or redistributed to any other person in any form. The report/message is based upon publicly available information, findings of our research wing "East wind" & information that we consider reliable, but we do not represent that it is accurate or complete and we do not provide any express or implied warranty of any kind, and also these are subject to change without notice. The recipients of this report should rely on their own investigations, should use their own judgment for taking any investment decisions keeping in mind that past performance is not necessarily a guide to future performance & that the the value of any investment or income are subject to market and other risks. Further it will be safe to assume that NSL and /or its Group or associate Companies, their Directors, affiliates and/or employees may have interests/ positions, financial or otherwise, individually or otherwise in the recommended/mentioned securities/mutual funds/ model funds and other investment products which may be added or disposed including & other mentioned in this report/message.