

SGX NIFTY : 7694 (3 Pt Up)

Quote of the Day

"Charlie and I decided long ago that in an investment lifetime it's too hard to make hundreds of smart decisions. That judgment became ever more compelling as Berkshire's capital mushroomed and the universe of investments that could significantly affect our results shrank dramatically. Therefore, we adopted a strategy that required our being smart - and not too smart at that - only a very few times. Indeed, we'll now settle for one good idea a year."

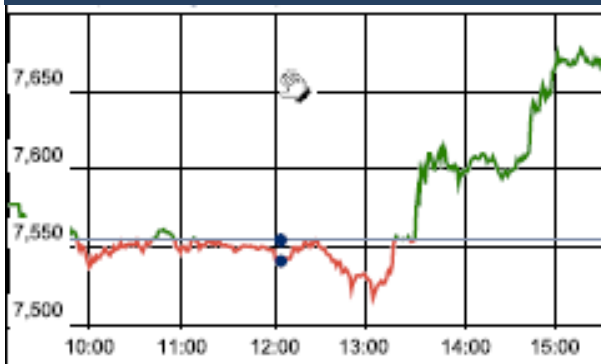
Warren Buffett

Chart of the Day

Fiscal Deficit



Index Action Nifty (11th Apr 16)



Index

Contents	Page	Coverage
News	2	Update
Economic Calendar	3	Update

Market

Name	Value	Change
Sensex	25,022.16	348.22
Nifty	7671.40	116.20
DOW	17,602.30	120.81
NASDAQ	4,833.40	(17.29)
CAC	4,312.63	9.51
DAX	9,682.99	60.73
FTSE	6,200.12	(4.29)
NIKKEI	15,957.20	206.07
HANG SENG	20,488.57	49.70
EW ALL SHARE	13331.82	169.31

Instituional Turnover

FII

Investor	Buy(Cr.)	Sale(Cr.)	Net(Cr.)
11-Apr-16	4907.60	4800.37	107.23
Mar,16	20245.23	20295.18	(49.95)
2016	731910.54	273446.28	458464.26

DII

Investor	Buy(Cr.)	Sale(Cr.)	Net(Cr.)
11-Apr-16	1382.93	1079.05	303.88
Mar,16	2526.75	2693.65	(166.90)
2016	121840.81	114748.10	7092.71

Commodity Price

Commodity/Currencies	Value	
GOLD	29330.00	↑
SILVER	37764.00	↑
CRUDEOIL	36.48	↑
COPPER	307.25	↓
NATURALGAS	127.70	↓
DOLLAR/RS.	66.41	↓
EURO/RS.	75.75	↑
POUND/RS.	94.54	↑

Market Snapshot

Top Price Performers

Top Performers 1D	% Change	Top Performers 1W	% Change	Top Performers 1M	% Change
BIRLACOT	25.00	KIRIINDUS	78.86	KIRIINDUS	126.29
LLOYDMETAL	20.00	UTTAMSUGAR	56.49	UTTAMSUGAR	119.73
SAGCEM	19.98	LLOYDMETAL	50.75	DHARSUGAR	104.70
SIMPLEX	19.96	RANASUG	43.42	THIRUSUGAR	98.41
PBAINFRA	19.94	CINEPRO	36.55	KAKATCEM	93.48

Worst Performers 1D	% Change	Worst Performers 1W	% Change	Worst Performers 1M	% Change
IPCALAB	(10.61)	VIVIMEDLAB	(79.17)	VIVIMEDLAB	(78.94)
SUJANAUNI	(10.34)	RAINBOWPAP	(24.60)	RAINBOWPAP	(61.37)
WEBELSOLAR	(10.00)	HINDCOMPOS	(16.11)	RICOHQ	(42.44)
SURAJLTD	(7.45)	RICOHQ	(14.46)	GLOBOFFS	(34.13)
HINDCOMPOS	(7.03)	ASHOKA	(14.45)	IVRCLINFRA	(33.16)

Top News

- Suzlon Group** has received maiden order of 105 MW (50 units of S97 120m 2100kW WTG with Hybrid Tower) from Greenko Group with over 1GW of operating assets. The project will be located in Andhra Pradesh, India and will be progressively commissioned by January 2017.
- Bharat Heavy Electricals** is getting big EPC contract from country's largest power generation company NTPC . NTPC's joint venture utility in Bangladesh has awarded engineering, procurement and construction contract to Indian equipment maker BHEL for an estimated value of USD 2.4 billion . This contract involves setting up two units of 650 MW each along with civil construction at Rampal in Bagerhat district,
- Orchid Pharma Ltd** has informed that Orchid received the Establishment inspection report (EIR) from USFDA based on the successful inspection closure for the API manufacturing facility located at Alathur, Kancheepuram District, India. The facility was inspected by USFDA in the month of August 2015.
- DLF** initiated the process to sell promoters' 40 per cent stake in the rental arm, a deal estimated at Rs 12,000-14,000 crore. DLF had in October announced that its promoters will sell their stake in the DLF Cyber City Developers Ltd (DCCDL), which holds the bulk of office and retail complexes.
- TTK Prestige** acquires kitchenware business in UK . Company forms wholly owned subsidiary in UK by name TTK British Holdings . Subsidiary to acquire branded kitchenware business
- Sun Life Financial** has increased its stake in Birla Sun Life Insurance, an ABNL subsidiary . Stake hiked from 26 percent to 49 percent, at an investment of Rs 1,664 crore
- Great Eastern Shipping Company Ltd** (GE Shipping) has contracted to buy a Japan-built second hand vessel which will be delivered to it in the current quarter. The company now owns a fleet of 32 vessels. The GE Shipping has contracted to buy a second hand very large gas carrier (1996 built) of about 76,931 cbm. The Japan-built vessel will be delivered to the company in Q1 FY 2016-17
- NTPC** has supplied surplus power of up to 100 MW to Gujarat, which is facing power shortage due multiple outage of their generating units. NTPC, through its subsidiary NTPC Vidyut Vyapar Nigam Ltd (NVVN) has supplied Un-Requisitioned Surplus (URS) power from Dadri Stage-I to Gujarat Urja Vitaran Nigam Ltd (GUVNL) under short-term bilateral mode on April 10 and 100 MW
- Malaysian Industrial Production** rose to a seasonally adjusted annual rate of 3.9%, from 3.2% in the preceding month. Analysts had expected Malaysian Industrial Production to rise to 4.0% last month.
- Chinese PPI** rose to an annual rate of -4.3%, from -4.9% in the preceding month. Analysts had expected Chinese PPI to rise to -4.6% last month.
- Japan's Core Machinery Orders** fell to -9.2%, from 15.0% in the preceding month. Analysts had expected Japan's Core Machinery Orders to fall to -12.4% last month.
- U.S. Wholesale Inventories** fell to a seasonally adjusted annual rate of -0.5%, from -0.2% in the preceding quarter whose figure was revised down from 0.2%. Analysts had expected U.S. Wholesale Inventories to fall -0.1% in the last quarter.

Economic Calendar

Country	Monday 11th April 16	Tuesday 12th April 16	Wednesday 13th April 16	Thursday 14th April 16	Friday 15th April 16
US	Federal Budget Balance	Import Prices m/m ,	Core Retail Sales m/m ,PPI m/m , Retail Sales m/m , Core PPI m/m , Empire State Manufacturing Index , Business Inventories m/m , Crude Oil Inventories , 10-y Bond Auction , Beige Book .	CPI m/m , Core CPI m/m , Unemployment Claims , Natural Gas Storage , 30-y Bond Auction , TIC Long-Term Purchases.	Empire State Manufacturing Index , Capacity Utilization Rate , Industrial Production m/m , Prelim UoM Consumer Sentiment , Prelim UoM Inflation Expectations .
UK/EURO ZONE	Sentix Investor Confidence	CPI y/y ,PPI Input m/m , RPI y/y , Core CPI y/y , HPI y/y , PPI Output m/m , German Final CPI m/m , Italian Industrial Production m/m .	Italian Trade Balance , BOE Credit Conditions Survey, Industrial Production m/m .	Final CPI y/y , Final Core CPI y/y , German 10-y Bond Auction , Spanish 10-y Bond Auction , MPC Official Bank Rate Votes , Monetary Policy Summary , Official Bank Rate , Asset Purchase Facility , MPC Asset Purchase Facility Votes.	German WPI m/m , Construction Output m/m , Trade Balance , French 10-y Bond Auction , 10-y Bond Auction.
INDIA		IIP Data .		WPI Data .	



(Regn. No. : INP 000004011)

Narnolia Securities Ltd.

Narnolia Research Lab

Stellar IT Park | 5th Floor | Office Space No. 6 | Tower-IIInd Plot No. C-25 | Sector-62 | Noida | Ph : 0120-4215110

Narnolia Securities Ltd.

201 | 2nd Floor | Marble Arch Building | 236B-AJC Bose Road Kolkata-700 020 Ph : 033-40501500
Email : narnolia@narnolia.com website :www.narnolia.com