

SGX NIFTY : 7924 (36 Pt Down)

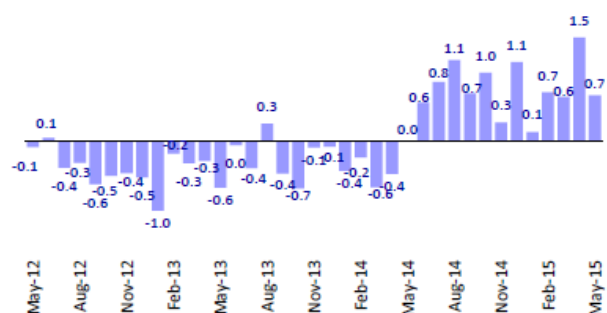
Quote of the Day

"You ought to be able to explain why you're taking the job you're taking, why you're making the investment you're making, or whatever it may be. And if it can't stand applying pencil to paper, you'd better think it through some more. And if you can't write an intelligent answer to those questions, don't do it."

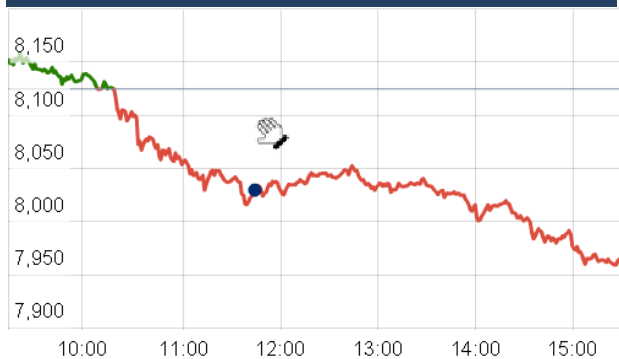
Warren Buffett

Chart of the Day

Monthly Domestic MF Flow



Index Action Nifty (11th June 15)



Index

Contents	Page	Coverage
News	2	Update
Economic Calendar	3	Update

Market

Name	Value	Change
Sensex	26,370.98	(469.52)
Nifty	7965.35	(159.10)
DOW	18,039.37	38.97
NASDAQ	5,082.51	5.82
CAC	4,971.31	36.46
DAX	11,332.78	67.39
FTSE	6,846.74	16.47
NIKKIE	20,411.65	28.68
HANG SENG	27,067.24	159.63
EW ALL SHARE	13700.41	(231.53)

Instituional Turnover

FII

Investor	Buy(Cr.)	Sale(Cr.)	Net(Cr.)
11th June,15	3752.77	4375.66	(622.89)
June,15	34952.56	38698.37	(3745.81)
2015	501902.68	475647.69	26254.99

DII

Investor	Buy(Cr.)	Sale(Cr.)	Net(Cr.)
11th June,15	1875.48	1286.19	589.29
June,15	17103.62	12118.98	4984.64
2015	188078.71	173093.14	14985.57

Commodity Price

Commodity/Currencies	Value	
GOLD	26886.00	↓
SILVER	36823.00	↑
CRUDEOIL	60.51	↓
COPPER	378.95	↓
NATURALGAS	182.60	↓
DOLLAR/RS.	63.97	↑
EURO/RS.	71.97	↓
POUND/RS.	99.26	↑

Market Snapshot

Top Price Performers

Top Performers 1D	% Change	Top Performers 1W	% Change	Top Performers 1M	% Change
PRADIP	20.00	JMDTELEFILM	63.70	INDTODE	140.77
ASTRAZEN	20.00	FULFORD	34.74	FULFORD	68.12
NOVARTIND	15.72	INDTODE	32.68	JMDTELEFILM	59.57
WHEELS	13.49	NOVARTIND	30.09	SANGAMIND	53.03
ISIBARS	12.85	ISIBARS	30.00	3IINFOTECH	52.07

Worst Price Performers

Worst Performers 1D	% Change	Worst Performers 1W	% Change	Worst Performers 1M	% Change
NAKODATEX	(18.75)	NAKODATEX	(36.81)	ROLATAN	(82.68)
PARRYSUGAR	(12.43)	VIVIMEDLAB	(34.68)	INDINFO	(57.78)
INDSWFTLAB	(11.44)	VTCIND	(31.13)	MAHAPOL	(50.60)
OMNITECH	(11.20)	REMIMETAL	(28.09)	PRITI	(49.80)
ALCHEM	(10.11)	BSLIMITED	(26.32)	UNITECH	(48.97)

Top News

• **RPP Infra Mgt Guideline** : Company is working on four-five big projects worth Rs 150 to 400 crore

The company has entered into a Joint Venture (JV) with Hunan Construction Engineering Group for development of large projects in India

The percentage of shareholding is yet to be decided by the company, adding that profit sharing will be decided project-wise depending upon the 'risk factor' of each project.

Mgt said that Dealmore & Owl are concentrating on public private partnership (PPP) and building, operating and transfer (BOT) projects

Dealmore & Owl are concentrating on public private partnership (PPP) and building, operating and transfer (BOT) projects

On the possibility of deficient monsoon, Mgt said that it would not affect the company's work as they are concentrating on drinking water line or sewage line and lining work for canals.

• **Motherson Sumi Mgt Guideline** : The company is capable of achieving its revenue target of USD 18 billion by 2020. Sehgal said the company intends to push 2-3 plants onstream in FY16. The company has recently won orders worth euro 4.4 billion. In last guidece Company has given for six months is a total of about 4.4 billion euro for approximately about Rs 35,000 crore. Before that the pipeline also company had given almost about a 9 billion orders in pipeline. So, they are in various stages and they start fructifying from maybe within the next three to four months. So, it is a difficult process to put everything down.

• **Bank of Maha Mgt Guideline** : Bank is will seek capital infusion from the finance ministry that will take its capital requirement higher by 0.5 percent . The bank is adequately capitalised, and the recapitalization from government will help its FY16 expansion plans .

• **Sakthi Sugars Mgt Guideline** : The government diverting excess four million tonne of sugar capacity into ethanol and ensuring that oil companies will buy it is a huge positive. The Rs 6,000 crore interest-free loan will also go a long way in helping the ailing sector . Mills may be in a position to clear Rs 4,000-5,000 crore, with their own resources. So, this Rs 6,000 crore will be an addition.

• **Glenmark Pharmaceuticals Inc.** USA has been granted final approval by the USFDA for Calcipotriene Cream, 0.005 percent, the therapeutic equivalent of Dovonex Cream, 0.005 percent of Leo Pharma A/S . Glenmark will commence shipping of Calcipotriene cream immediately,

• **AstraZeneca Pharma** announced the launch of Forxiga (dapaglifozin), a breakthrough treatment for Type 2 diabetes mellitus. The announcement was made during market hours today, 11 June 2015. Forxiga belongs to a new class of Type 2 diabetes mellitus medication-a highly selective inhibitor of sodium-glucose cotransporter 2 (SGLT2) .

• **Promoters of Adani Ports and Special Economic Zone (APSEZ)** have increased their stake in the company to 56.26 percent.

• **DLF** is looking to garner Rs 1500 crore by calendar year 2015 end through stake sale in two projects.

• **Malaysian Industrial Production** fell to a seasonally adjusted annual rate of 4.0%, from 6.9% in the preceding month. Analysts had expected Malaysian Industrial Production to fall to 4.0% last month.

• **Australian employment** change rose to a seasonally adjusted 42.0K, from -2.9K in the preceding month. Analysts had expected Australian employment change to rise 11.0K last month.

• **National Bureau of Statistics of China said that** Chinese Industrial Production rose to 6.1%, from 5.9% in the preceding month . Analysts had expected Chinese Industrial Production to rise to 6.0% last month.

• **French CPI** rose to a seasonally adjusted 0.2%, from 0.1% in the preceding month. Analysts had expected French CPI to rise 0.3% last month.

• **Swedish CPI** rose to a seasonally adjusted 0.1%, from -0.2% in the preceding month. Analysts had expected Swedish CPI to rise to -0.1% last month.

Country	Monday 1 June 15	Tuesday 2 June 15	Wednesday 3 June 15	Thursday 4 June 15	Friday 5 June 15
US	Labor Market Conditions Index m/m .	JOLTS Job Openings , Wholesale Inventories m/m , 10-y Bond Auction .	Crude Oil Inventories , 30-y Bond Auction , Federal Budget Balance .	Core Retail Sales m/m , Retail Sales m/m , Unemployment Claims , Import Prices m/m , Business Inventories m/m .	PPI m/m , Core PPI m/m , Prelim UoM Consumer Sentiment , Prelim UoM Inflation Expectations .
UK/EURO ZONE	German Industrial Production m/m , German Trade Balance , Sentix Investor Confidence .	Italian Industrial Production m/m , Inflation Report Hearings , 10-y Bond Auction .	French Industrial Production m/m , Manufacturing Production m/m , Industrial Production m/m , NIESR GDP Estimate , RICS House Price Balance .	French Final Non-Farm Payrolls q/q , French CPI m/m .	German Final CPI m/m , Construction Output m/m , Industrial Production m/m .
INDIA					IIP & CPI Data

Narnolia Securities Ltd.

<p>Narnolia Research Lab Stellar IT Park 5th Floor Office Space No. 6 Tower-II Ind Plot No. C-25 Sector-62 Noida Ph : 0120-4215110</p>	<p>Central Strategy Desk - Kolkata 124 1st Floor 7/1 Lords Sinha Road Kolkata - 71 Ph : 033-22821500 M : 93347 14418, 98302 69810</p>
---	--