

SGX NIFTY : 8518 (30 Pt Up)

Quote of the Day

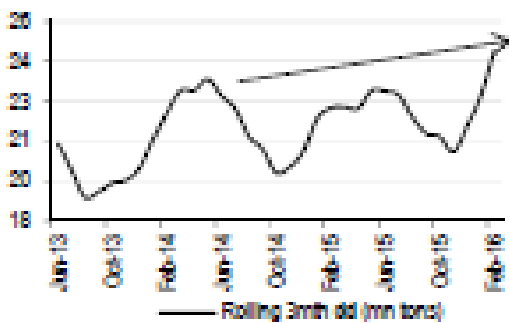
"Abnormally good or abnormally bad conditions do not last forever. This is true not only of general business but of particular industries as well. Corrective forces are often set in motion which tend to restore profits where they have disappeared, or to reduce them where they are excessive in relation to capital."

Benjamin Graham

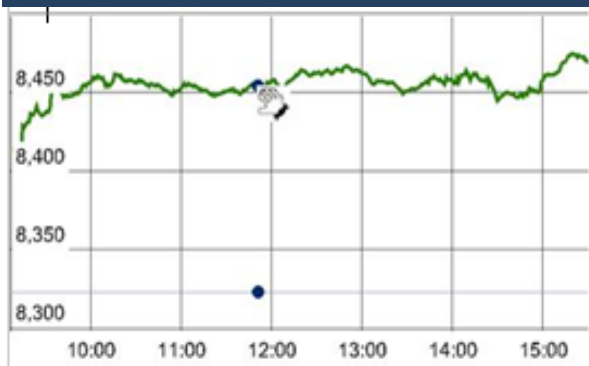
Chart of the Day

India Cement Demand Trend

India cement demand trend



Index Action Nifty (11th July 16)



Index

Contents	Page	Coverage
News	2	Update
Economic Calendar	3	Update

Market

Name	Value	Change
Sensex	27,626.69	499.79
Nifty	8467.90	144.70
DOW	18,226.93	80.19
NASDAQ	4,988.64	31.88
CAC	4,264.53	73.85
DAX	9,833.41	203.75
FTSE	6,682.86	92.22
NIKKEI	16,124.36	415.54
HANG SENG	21,042.29	161.79
EW ALL SHARE	14766.15	215.58

Instituional Turnover

FII

Investor	Buy(Cr.)	Sale(Cr.)	Net(Cr.)
11-Jul-16	4865.31	3809.51	1055.80
June,16	78213.93	74356.63	3857.30
2016	329354.34	327507.73	1846.61

DII

Investor	Buy(Cr.)	Sale(Cr.)	Net(Cr.)
11-Jul-16	1519.64	2130.21	(610.57)
June,16	27319.73	29703.86	(2384.13)
2016	140810.85	135636.11	5174.74

Commodity Price

Commodity/Currencies	Value	
GOLD	31578.00	↓
SILVER	47812.00	↑
CRUDEOIL	44.49	↓
COPPER	321.60	↑
NATURALGAS	182.10	↓
DOLLAR/RS.	67.12	↓
EURO/RS.	74.44	↑
POUND/RS.	87.80	↑

Market Snapshot

Top Price Performers

Top Performers 1D	% Change	Top Performers 1W	% Change	Top Performers 1M	% Change
AUSTENG	20.00	BLBLIMITED	57.95	ARSSINFRA	90.24
BEDMUTHA	20.00	PBAINFRA	55.09	EMAMIINFRA	90.06
JYOTISTRUC	19.98	GRAVITA	54.40	REIAGROLTD	89.47
JINDCOT	19.91	XLENERGY	43.89	GNRL	89.34
VIVIDHA	19.13	UBHOLDINGS	43.50	KEMROCK	86.32

Worst Performers 1D	% Change	Worst Performers 1W	% Change	Worst Performers 1M	% Change
LLOYDSTEEL	(9.52)	DCMSRMIND	(68.84)	MANDHANA	(72.20)
COMFINTE	(7.95)	LKPMERFIN	(27.17)	DCMSRMIND	(69.48)
REMIMETAL	(7.50)	LLOYDSTEEL	(21.49)	GEEFC	(34.33)
BANG	(7.06)	MANDHANA	(18.46)	SUNASIAN	(29.68)
TREEHOUSE	(6.36)	SHRENUJ	(18.25)	RAIREKMOH	(29.22)

Top News

- **Vedanta Mgt Guideline** : Company is investing USD 1 billion in South Africa for the production of zinc and lead concentrates at Black Mountain Mining. The company has invested USD 4 billion in Africa in the past 12 years and it is this long-standing presence that helped them go ahead with the investment . the company got tremendous support from the South African government with regard to the investment plans. Vedanta's other operations in Africa include copper mining at Konkola Copper Mines in Zambia and production of special high grade zinc metal at Skorpioon Zinc in Namibia.

- **NBCC Mgt Guideline** : Company has won contracts for redevelopment of 7 colonies in South Delhi. The company will be constructing Rs 25,000 crore worth of the total project. About Rs 6000 crore worth project will be undertaken by the Central Public Works Department .

The seed money for the project will come from NBCC, Mittal added, for which it would get an interest of 12 percent.

The company expects margins of Rs 2500 crore in five years. Revenue booking from this project will begin from FY17-18

- **Inox Wind** has bagged an order from Atria Wind Power to set up a 50 megawatt project in Gujarat. As part of the turnkey order, Inox Wind will provide Atria with end-to-end solutions from development and construction to commissioning and providing long-term operations and maintenance services.

- **Apollo Hospitals** announced that it recently signed a MoU with Stanford University for the Stanford South Asian Translational Heart Initiative (SSAATHI) related to South Asians and Chronic Disease. Together, both parties will attempt to delve deeper into the causes associated with cardiovascular risk in diabetic and prediabetic South Asians. The MoU is the first step towards a long-term partnership that will develop and grow over time.

- **Dewan Housing** - CARE & Brickwork Ratings (BWR) have provided CARE AAA and BWR AAA to the proposed NCDs

- **Tata Power** its board has approved raising up to Rs 3,500 crore through issuance of non-convertible debentures in one or more tranches on a private placement basis. The tenor of these securities will not exceed three years (Debentures) from the date of issue on private placement basis to any persons, entities, bodies corporate, companies, banks, financial institutions and any other categories of eligible investors permitted to invest in the Debentures under applicable laws.

- **Ashok Leyland** bags orders for 3600 buses from various STUs in current fiscal .

- **Japan's Corporate Goods Price** Index remained unchanged at a seasonally adjusted annual rate of -4.2%, from -4.2% in the preceding month. Analysts had expected Japan's Corporate Goods Price Index to remain unchanged at -4.2% last month.

- **Canadian housing starts** rose to a seasonally adjusted annual rate of 218.3K, from 186.7K in the preceding month whose figure was revised down from 188.6K. Analysts had expected Canadian housing starts to rise to 189.5K last month.

- **Polish CPI** rose to a seasonally adjusted annual rate of -0.8%, from -0.9% in the preceding month. Analysts had expected Polish CPI to rise to -0.8% last month.

- **Japan's Core Machinery Orders** rose to -1.4%, from -11.0% in the preceding month. Analysts had expected Japan's Core Machinery Orders to rise to 2.6% last month.

- **Chinese PPI** rose to an annual rate of -2.6%, from -2.8% in the preceding month. Analysts had expected Chinese PPI to rise to -2.5% last month.

- **Norwegian CPI** rose to a seasonally adjusted 0.6%, from 0.3% in the preceding month. Analysts had expected Norwegian CPI to rise 0.1% last month.

BSE Code	Company Name	Result Date	BSE Code	Company Name	Result Date
511505	CAPITALT	12-Jul-16	505982	HINDUJAFO	18-Jul-16
532443	CERA	12-Jul-16	532819	MINDTREE	18-Jul-16
501831	COASTCORP	12-Jul-16	531212	NALINLEA	18-Jul-16
509760	MODRNSH	12-Jul-16	517536	ONWARDTEC	18-Jul-16
538596	QUANTBUILD	12-Jul-16	504961	TATAYODOGA	18-Jul-16
519307	VIKASWSP	12-Jul-16	500174	GLFL	19-Jul-16
531364	AQUAPIV	13-Jul-16	507685	WIPRO	19-Jul-16
530843	CUPID	13-Jul-16	500093	CROMPGREAV	20-Jul-16
509069	INFOMEDIA	13-Jul-16	500150	FOSECOIND	20-Jul-16
533007	LGBFORGE	13-Jul-16	524109	KABRAEXTRU	20-Jul-16
539767	MNIL	13-Jul-16	521248	KITEX	20-Jul-16
532798	NETWORK18	13-Jul-16	531209	NUCLEUS	20-Jul-16
523445	RIIL	13-Jul-16	523648	PLASTIBLEN	20-Jul-16
532800	TV18BRDCST	13-Jul-16	532663	SASKEN	20-Jul-16
517494	ACCEL	14-Jul-16	500472	SKFINDIA	20-Jul-16
531247	ALPHA	14-Jul-16	500002	ABB	21-Jul-16
511196	CANFINHOME	14-Jul-16	532215	AXISBANK	21-Jul-16
531358	CHOICEIN	14-Jul-16	533228	BHARATFIN	21-Jul-16
532175	CYIENT	14-Jul-16	532523	BIOCON	21-Jul-16
538708	ETIL	14-Jul-16	532792	CAIRN	21-Jul-16
531410	GUJFOIL	14-Jul-16	500670	GNFC	21-Jul-16
520066	JAYBARMARU	14-Jul-16	500180	HDFCBANK	21-Jul-16
523828	MENONBE	14-Jul-16	500292	HEIDELBERG	21-Jul-16
511766	MUTHTFN	14-Jul-16	505726	IFBIND	21-Jul-16
539673	RCL	14-Jul-16	500241	KIRLOSBROS	21-Jul-16
538611	RTFL	14-Jul-16	500247	KOTAKBANK	21-Jul-16
517201	SWITCHTE	14-Jul-16	532987	RBL	21-Jul-16
532540	TCS	14-Jul-16	539268	SYNGENE	21-Jul-16
524394	VIMTALABS	14-Jul-16	533167	COROENGG	22-Jul-16
506597	AMAL	15-Jul-16	539844	EQUITAS	22-Jul-16
513309	GOLKONDA	15-Jul-16	500469	FEDERALBNK	22-Jul-16
531253	INDGELA	15-Jul-16	505283	KIRLPNU	22-Jul-16
500209	INFY	15-Jul-16	532720	M&MFIN	22-Jul-16
500253	LICHSGFIN	15-Jul-16	533179	PERSISTENT	22-Jul-16
524103	LINEARIND	15-Jul-16	532661	RML	22-Jul-16
512337	MAHSHRE	15-Jul-16	500674	SANOFI	22-Jul-16
523704	MASTEK	15-Jul-16	504960	STEWARTQ	22-Jul-16
532407	MOSCHIP	15-Jul-16	532410	TRANSCOR	22-Jul-16
532541	NIITTECH	15-Jul-16	526299	MPHASIS	23-Jul-16
500325	RELIANCE	15-Jul-16	506690	UNICHEMLAB	23-Jul-16
511403	SAIJEEV	15-Jul-16	507525	AMRITCORP	25-Jul-16
513262	SSWL	15-Jul-16	520119	ASAL	25-Jul-16
509550	GAMMONIND	16-Jul-16	523708	EIMCOELECO	25-Jul-16
513729	AROGRANITE	18-Jul-16	500171	GHCL	25-Jul-16
503960	BBL	18-Jul-16	500266	MAHSCOOTER	25-Jul-16
500086	EXIDEIND	18-Jul-16	500126	MERCK	25-Jul-16
511288	GRUH	18-Jul-16	532777	NAUKRI	25-Jul-16

532504	NAVINFLUOR	25-Jul-16	512587	ZODJRD MKJ	28-Jul-16
532988	RANEENGINE	25-Jul-16	521097	AMARJOTHI	29-Jul-16
513010	TATASPONGE	25-Jul-16	511243	CHOLAFIN	29-Jul-16
500425	AMBUJACEM	26-Jul-16	523754	EPCIN	29-Jul-16
532978	BAJAJFINSV	26-Jul-16	532424	GODREJCP	29-Jul-16
500034	BAJFINANCE	26-Jul-16	519552	HERITGFOOD	29-Jul-16
506395	COROMANDEL	26-Jul-16	532174	ICICIBANK	29-Jul-16
500124	DRREDDY	26-Jul-16	500165	KANSAINER	29-Jul-16
500123	ELANTAS	26-Jul-16	532652	KTKBANK	29-Jul-16
505700	ELECON	26-Jul-16	539524	LALPATHLAB	29-Jul-16
532809	FSL	26-Jul-16	500264	MAFATIND	29-Jul-16
509567	GOACARBON	26-Jul-16	500262	MAFATLAFIN	29-Jul-16
532659	IDFC	26-Jul-16	530243	MANGASOF	29-Jul-16
539437	IDFCBANK	26-Jul-16	531049	NEELKAN	29-Jul-16
534816	INFRATEL	26-Jul-16	500790	NESTLEIND	29-Jul-16
504786	INVPRECQ	26-Jul-16	500220	JASCH	30-Jul-16
532756	MAHINDCIE	26-Jul-16	531221	MAYURFL	30-Jul-16
523642	PIIND	26-Jul-16	526831	NAINAMS	30-Jul-16
532460	PONNIERODE	26-Jul-16	530565	SSLFINANCE	30-Jul-16
500407	SWARAJENG	26-Jul-16	513488	SSWRL	30-Jul-16
500408	TATAELXSI	26-Jul-16	531762	UNJHAFOR	30-Jul-16
532953	VGUARD	26-Jul-16	524038	VENLONENT	30-Jul-16
524129	VINYLINDIA	26-Jul-16	516030	YASHPPR	30-Jul-16
505412	WENDT	26-Jul-16	511403	SAIJEEV	31-Jul-16
505537	ZEEL	26-Jul-16	523411	ADCINDIA	01-Aug-16
500215	ATFL	27-Jul-16	500067	BLUESTARCO	01-Aug-16
532977	BAJAJ-AUTO	27-Jul-16	590072	SUNDRMBRAK	01-Aug-16
500490	BAJAJHLDNG	27-Jul-16	512527	SUPER	01-Aug-16
500096	DABUR	27-Jul-16	509480	BERGEPAIN	03-Aug-16
500123	ELANTAS	27-Jul-16	531162	EMAMILTD	03-Aug-16
511676	GICHSGFIN	27-Jul-16	531319	MARUTISE	03-Aug-16
500010	HDFC	27-Jul-16	500346	PUNJCOMMU	03-Aug-16
504741	INDIANHUME	27-Jul-16	500414	TIMEX	03-Aug-16
502330	IPAPPM	27-Jul-16	533217	HMVL	04-Aug-16
500730	NOCIL	27-Jul-16	534804	CARERATING	05-Aug-16
526492	RISHIROOP	27-Jul-16	532662	HTMEDIA	05-Aug-16
511218	SRTRANSFIN	27-Jul-16	500252	LAXMIMACH	05-Aug-16
524542	SUKHJITS	27-Jul-16	530555	PARACABLES	05-Aug-16
530401	VINYOFL	27-Jul-16	507747	TTKHEALTH	05-Aug-16
532648	YESBANK	27-Jul-16	532865	MEGH	06-Aug-16
500147	CMIFPE	28-Jul-16	500830	COLPAL	08-Aug-16
590031	DENORA	28-Jul-16	522261	DOLPHINOFF	08-Aug-16
505790	FAGBEARING	28-Jul-16	511208	IVC	08-Aug-16
500660	GLAXO	28-Jul-16	590066	KCP	08-Aug-16
517449	MAGNAELQ	28-Jul-16	531213	MANAPPURAM	09-Aug-16
532313	MAHLIFE	28-Jul-16	511632	OLYMTFI	09-Aug-16
504093	PANAENERG	28-Jul-16	500338	PRISMCEM	09-Aug-16
530931	STANPACK	28-Jul-16	500144	FINCABLES	10-Aug-16
501370	WALCHPF	28-Jul-16	531500	RAJESHEXPO	10-Aug-16

500411	THERMAX	10-Aug-16	505800	RANEHOLDIN	11-Aug-16
522113	TIMKEN	10-Aug-16	523736	DPL	12-Aug-16
520113	VESUVIUS	10-Aug-16	504840	KAIRA	12-Aug-16
530609	CARNATIN	11-Aug-16	530125	SAMRATPH	12-Aug-16
522064	HONDAPOWER	11-Aug-16	506655	SUDARSCHEM	12-Aug-16

Economic Calendar

Country	Monday 4th July 16	Tuesday 5th July 16	Wednesday 6th July 16	Thursday 7th July 16	Friday 8th July 16
US	Factory Orders m/m.	Final Services PMI , IBD/TIPP Economic Optimism .	ADP Non-Farm Employment Change , Trade Balance, FOMC Meeting Minutes .	Unemployment Claims , JOLTS Job Openings ,Crude Oil Inventories .	Average Hourly Earnings m/m , Non-Farm Employment Change ,Unemployment Rate , Consumer Credit m/m More .
UK/EURO ZONE	Spanish Unemployment Change ,Sentix Investor Confidence , Construction PMI , PPI m/m .	Spanish Services PMI , Italian Services PMI , French Final Services PMI , German Final Services PMI , Services PMI , BOE Financial Stability Report .	French Gov Budget Balance , French Trade Balance , Housing Equity Withdrawal q/q .	German Industrial Production m/m ,Halifax HPI m/m , Manufacturing Production m/m , FPC Meeting Minutes , Industrial Production m/m .	German Trade Balance ,Italian Industrial Production m/m , Goods Trade Balance , French 10- y Bond Auction , 10-y Bond Auction .
INDIA					

Narnolia Securities Ltd.

Narnolia Research Lab

Stellar IT Park | 5th Floor | Office Space No. 6 | Tower-IIInd Plot
No. C-25 | Sector-62 | Noida | Ph : 0120-4215110

Narnolia Securities Ltd.

201 | 2nd Floor | Marble Arch Building | 236B -AJC Bose Road Kolkata-
700 020 Ph : 033-40501500
Email : narnolia@narnolia.com website :www.narnolia.com