

SGX NIFTY : 8229 (38.50 Pt Up)

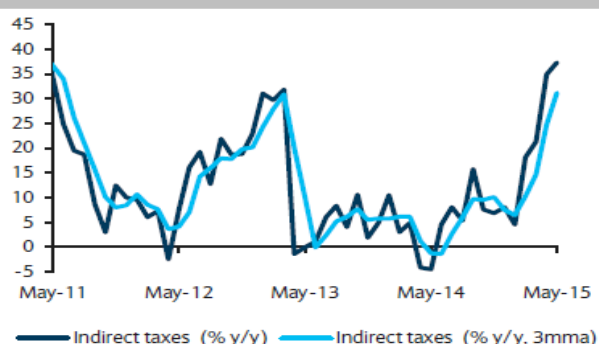
Quote of the Day

"It's not given to human beings to have such talent that they can just know everything about everything all the time. But it is given to human beings who work hard at it - who look and sift the world for a mispriced bet - that they can occasionally find one. And the wise ones bet heavily when the world offers them that opportunity. They bet big when they have the odds. And the rest of the time they don't. It's just that simple."

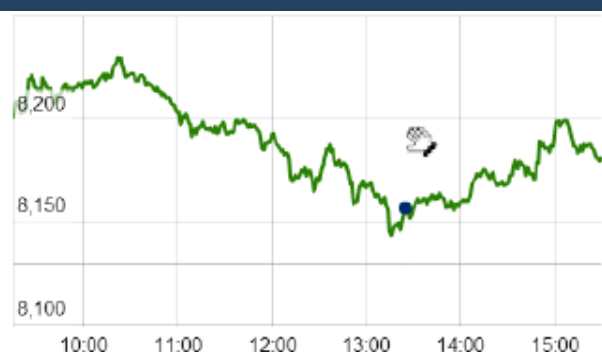
Charlie Munger

Chart of the Day

Indirect Tax Trend



Index Action Nifty (9th Oct 15)



Index

| Contents | Page | Coverage |
|-------------------|------|----------|
| News | 2 | Update |
| Economic Calendar | 3 | Update |
| | | |

Market

| Name | Value | Change |
|--------------|-----------|--------|
| Sensex | 27,079.51 | 233.70 |
| Nifty | 8189.70 | 60.35 |
| DOW | 17,048.49 | 33.74 |
| NASDAQ | 4,830.47 | 19.68 |
| CAC | 4,701.80 | 25.48 |
| DAX | 10,096.36 | 103.53 |
| FTSE | 6,416.16 | 41.34 |
| NIKKEI | Closed | |
| HANG SENG | 22,667.87 | 209.07 |
| EW ALL SHARE | 14114.32 | 33.87 |

Instituional Turnover

FII

| Investor | Buy(Cr.) | Sale(Cr.) | Net(Cr.) |
|-----------|-----------|-----------|-----------|
| 09-Oct-15 | 3594.01 | 3110.15 | 483.86 |
| Oct,15 | 48039.22 | 53968.16 | (5928.94) |
| 2015 | 869996.57 | 873098.47 | (3101.90) |

DII

| Investor | Buy(Cr.) | Sale(Cr.) | Net(Cr.) |
|-----------|-----------|-----------|----------|
| 09-Oct-15 | 1583.23 | 1952.23 | (369.00) |
| Oct,15 | 41851.78 | 29825.23 | 6156.75 |
| 2015 | 348095.45 | 299987.74 | 48107.71 |

Commodity Price

| Commodity/Currencies | Value | |
|----------------------|----------|---|
| GOLD | 26622.00 | ↑ |
| SILVER | 36822.00 | ↓ |
| CRUDEOIL | 53.03 | ↓ |
| COPPER | 347.75 | ↑ |
| NATURALGAS | 163.10 | ↑ |
| DOLLAR/RS. | 64.75 | ↓ |
| EURO/RS. | 73.63 | ↑ |
| POUND/RS. | 99.26 | ↑ |

Market Snapshot

Top Price Performers

| Top Performers 1D | % Change | Top Performers 1W | % Change | Top Performers 1M | % Change |
|-------------------|----------|-------------------|----------|-------------------|----------|
| ESTER | 20.00 | HCL-INSYS | 65.70 | KSOILS | 166.67 |
| GENESYS | 19.99 | DWARKESH | 65.69 | FARMAXIND | 154.55 |
| SHYAMTEL | 19.97 | GENESYS | 59.44 | ERAINFRA | 122.63 |
| ESL | 19.85 | RENUKA | 55.83 | LITL | 97.79 |
| TCI | 19.66 | ADSL | 54.40 | ANDHRACEMT | 89.17 |

Worst Price Performers

| Worst Performers 1D | % Change | Worst Performers 1W | % Change | Worst Performers 1M | % Change |
|---------------------|----------|---------------------|----------|---------------------|----------|
| BIRLACOT | (20.00) | CANDC | (25.59) | AEGISCHEM | (88.35) |
| GLOBOFFS | (8.09) | KGNENT | (21.91) | AMTEKINDIA | (61.54) |
| WELSPUNIND | (7.62) | ADINATHBI | (20.83) | GOKUL | (33.04) |
| SUNDARAM | (7.33) | GREENFIRE | (18.83) | HELIOSMATH | (31.07) |
| REMIMETAL | (6.54) | INFODRIVE | (15.00) | ROLATAN | (30.44) |

Top News

- **Fund Action** : Nalanda India Equity Fund Limited bought 16,50,000 shares of Elgi Equipments at Rs 121.50 on the NSE and bought 18,05,588 shares at Rs 121.50 on the BSE . ** ASK Securities Advisory Services Private Limited sold 1,84,000 shares of Bannariamman Sugars at Rs 815.50 on the BSE. ** Amtek Auto has pledged an additional 4.37 per cent stake in its subsidiary Castex Technologies towards short-term borrowing needs.

- **Unichem Laboratories** has received Abbreviated New Drug Application (ANDA) approval from United States Food and Drug Administration (USFDA) for Montelukast Sodium tablets. Montelukast sodium tablets 10 milligram (mg) are therapeutically equivalent to Singulair tablets 10mg of Merck Sharp & Dohme Corp . Montelukast is a leukotriene receptor antagonist (LTRA) which is indicated for prophylaxis and chronic treatment of asthma in adults and adolescents patients over 15 years of age. It is also indicated for prevention of exercise-induced bronchoconstriction (EIB) adults and adolescents patients over 15 years of age. It is also prescribed for relief of symptoms of allergic rhinitis in adults and adolescents patients over 15 years of age.

- **Apollo Hospitals** will raise up to Rs 750 crore through rights issue for the expansion of the hospitals in a couple of months . In May this year, proposal for a rights issue for an amount not exceeding Rs 750 crore to its shareholders was approved by the company's board, although the price was to be determined either by it or a committee late

- **U.K. -based private equity firm Apex Partners** is all set to acquire a 23.3 percent stake in Zensar Technologies . Sources have told that firm will buy the stake from Electra Partners, at a price of Rs 826 per share. The total deal size is pegged at Rs 859 crore.

- **Aurobindo Pharma** has received the final approval from the US health regulator FDA to manufacture and market generic Aripiprazole tablets used for treatment of psychotic conditions in the American market. The approval is for the tablets in the strengths of 2mg, 5mg, 10mg, 15mg, 20mg and 30mg, it added. The approved ANDA (Abbreviated New Drug Application) is for the generic version of Otsuka Pharmaceutical's Abilify tablets in the same strengths

- **Jagran Prakashan Mgt Guideline** : Company has given a nod to demerger of radio business into Music Broadcast, a subsidiary of the company. The board also approved merger of Spectrum Broadcast and Crystal Sound & Music holdings with the company. The demerger will ensure that Jagran Prakashan has direct stake in the Radio City and not through its subsidiaries, Agarwal said adding that post the demerger, the company will hold 93 percent stake in the radio channel. Company expects a 15 percent compounded annual growth rate (CAGR) and nearly 36 percent operating margin in next two year

- **Promoter and promoter group companies (Fortis Healthcare, Religare Enterprises, Religare Wellness, Dion Global Solutions and Ligare Voyages)** have 72.98 percent stake in SRL and the balance stake is held by private equity investors & others.

- **Canadian unemployment rate** rose to a seasonally adjusted 7.1%, from 7.0% in the preceding month. Analysts had expected Canadian unemployment rate to fall to 6.9% last month.

- **U.K. trade balance rose** to a seasonally adjusted -11.15B, from -12.20B in the preceding month whose figure was revised down from -11.08B. Analysts had expected U.K. trade balance to rise to -10.00B last month.

- **Norwegian CPI** rose to a seasonally adjusted 0.6%, from -0.1% in the preceding month. Analysts had expected Norwegian CPI to rise 0.7% last month.

- **French Industrial Production** rose to 1.6%, from -1.1% in the preceding month whose figure was revised down from -0.8%. Analysts had expected French Industrial Production to rise 0.5% last month.

- **U.S. Natural Gas Storage** rose to a seasonally adjusted annual rate of 95B, from 98B in the preceding month. Analysts had expected U.S. Natural Gas Storage to rise 98B last month.

Result Calendar Q2FY16

| BSE Code | Company Name | Date | BSE Code | Company Name | Date |
|----------|--------------|-----------|----------|--------------|-----------|
| 531247 | ALPHA | 12-Oct-15 | 532893 | VTMLTD | 15-Oct-15 |
| 500209 | INFY | 12-Oct-15 | 506597 | AMAL | 16-Oct-15 |
| 524622 | ISTRNETWK | 12-Oct-15 | 526847 | ASHSI | 16-Oct-15 |
| 523445 | RIIL | 12-Oct-15 | 500215 | ATFL | 16-Oct-15 |
| 509992 | UBENGG | 12-Oct-15 | 501833 | CHOWGULSTM | 16-Oct-15 |
| 524661 | WELCURE | 12-Oct-15 | 532329 | DANLAW | 16-Oct-15 |
| 532772 | DCBBANK | 13-Oct-15 | 532922 | EDELWEISS | 16-Oct-15 |
| 538708 | ETIL | 13-Oct-15 | 505737 | INTLCOMBQ | 16-Oct-15 |
| 532999 | NEXTGENT | 13-Oct-15 | 523828 | MENONBE | 16-Oct-15 |
| 538611 | RTFL | 13-Oct-15 | 532541 | NIITTECH | 16-Oct-15 |
| 500389 | SILVERLINE | 13-Oct-15 | 500325 | RELIANCE | 16-Oct-15 |
| 507753 | SREERAYA | 13-Oct-15 | 517447 | RSSOFTWARE | 16-Oct-15 |
| 532540 | TCS | 13-Oct-15 | 517320 | SAVINFOCO | 16-Oct-15 |
| 531894 | VATSAMUS | 13-Oct-15 | 539353 | SWARAJAUTO | 16-Oct-15 |
| 500089 | DICIND | 14-Oct-15 | 500407 | SWARAJENG | 16-Oct-15 |
| 509567 | GOACARBON | 14-Oct-15 | 513010 | TATASPONGE | 16-Oct-15 |
| 500189 | HINDUJAVEN | 14-Oct-15 | 531846 | TRINITYLEA | 16-Oct-15 |
| 500696 | HINDUNILVR | 14-Oct-15 | 500052 | BEPL | 17-Oct-15 |
| 509069 | INFOMEDIA | 14-Oct-15 | 500092 | CRISIL | 17-Oct-15 |
| 531212 | NALINLEA | 14-Oct-15 | 505368 | REVATHI | 17-Oct-15 |
| 539016 | NEIL | 14-Oct-15 | 511640 | SANGHCO | 17-Oct-15 |
| 532798 | NETWORK18 | 14-Oct-15 | 532218 | SOUTHBANK | 17-Oct-15 |
| 507649 | RASOI | 14-Oct-15 | 504961 | TATAYODOGA | 17-Oct-15 |
| 517506 | TTKPRESTIG | 14-Oct-15 | 532262 | TCIIND | 17-Oct-15 |
| 532800 | TV18BRDCST | 14-Oct-15 | 506690 | UNICHEMLAB | 17-Oct-15 |
| 505537 | ZEEL | 14-Oct-15 | 532345 | GATI | 19-Oct-15 |
| 526433 | ASMTEC | 15-Oct-15 | 511288 | GRUH | 19-Oct-15 |
| 511505 | CAPITALT | 15-Oct-15 | 532281 | HCLTECH | 19-Oct-15 |
| 519600 | CCL | 15-Oct-15 | 519552 | HERITGFOOD | 19-Oct-15 |
| 532175 | CYIENT | 15-Oct-15 | 500188 | HINDZINC | 19-Oct-15 |
| 533151 | DBCORP | 15-Oct-15 | 502937 | KESORAMIND | 19-Oct-15 |
| 533896 | FERVENTSYN | 15-Oct-15 | 521248 | KITEX | 19-Oct-15 |
| 509563 | GARWAMAR | 15-Oct-15 | 500262 | MAFATLAFIN | 19-Oct-15 |
| 514043 | HIMATSEIDE | 15-Oct-15 | 500266 | MAHSCOOTER | 19-Oct-15 |
| 520066 | JAYBARMARU | 15-Oct-15 | 530011 | MANGCHEFER | 19-Oct-15 |
| 501151 | KARTKIN | 15-Oct-15 | 532892 | MOTILALOFS | 19-Oct-15 |
| 590003 | KARURVYSYA | 15-Oct-15 | 506734 | MYSORPETRO | 19-Oct-15 |
| 526209 | KSOILS | 15-Oct-15 | 535754 | ORIENTCEM | 19-Oct-15 |
| 534690 | LAKSHVILAS | 15-Oct-15 | 532522 | PETRONET | 19-Oct-15 |
| 500253 | LICHSGFIN | 15-Oct-15 | 532987 | RBL | 19-Oct-15 |
| 511000 | MADHUSE | 15-Oct-15 | 532663 | SASKEN | 19-Oct-15 |
| 523704 | MASTEK | 15-Oct-15 | 533228 | SKSMICRO | 19-Oct-15 |
| 532819 | MINDTREE | 15-Oct-15 | 513517 | STEELCAS | 19-Oct-15 |
| 502742 | SINTEX | 15-Oct-15 | 533158 | THANGAMAYL | 19-Oct-15 |
| 513434 | TATAMETALI | 15-Oct-15 | 504966 | TINPLATE | 19-Oct-15 |
| 532953 | VGUARD | 15-Oct-15 | 532538 | ULTRACEMCO | 19-Oct-15 |

| | | | | | |
|--------|------------|-----------|--------|------------|-----------|
| 500410 | ACC | 20-Oct-15 | 532321 | CADILAHC | 22-Oct-15 |
| 513729 | AROGRANITE | 20-Oct-15 | 532628 | 3IINFOTECH | 23-Oct-15 |
| 519105 | AVTNPL | 20-Oct-15 | 520119 | ASAL | 23-Oct-15 |
| 532978 | BAJAJFINSV | 20-Oct-15 | 500820 | ASIANPAINT | 23-Oct-15 |
| 500034 | BAJFINANCE | 20-Oct-15 | 511243 | CHOLAFIN | 23-Oct-15 |
| 506285 | BAYERCROP | 20-Oct-15 | 534816 | INFRATEL | 23-Oct-15 |
| 532523 | BIOCON | 20-Oct-15 | 526169 | MULTIBASE | 23-Oct-15 |
| 511196 | CANFINHOME | 20-Oct-15 | 513262 | SSWL | 23-Oct-15 |
| 531344 | CONCOR | 20-Oct-15 | 505412 | WENDT | 23-Oct-15 |
| 511072 | DHFL | 20-Oct-15 | 532424 | GODREJCP | 24-Oct-15 |
| 508906 | EVERESTIND | 20-Oct-15 | 532732 | KKCL | 24-Oct-15 |
| 500469 | FEDERALBNK | 20-Oct-15 | 533179 | PERSISTENT | 25-Oct-15 |
| 500150 | FOSECOIND | 20-Oct-15 | 532888 | ASIANILES | 26-Oct-15 |
| 507488 | GMBREW | 20-Oct-15 | 512313 | BIJLTEX | 26-Oct-15 |
| 500182 | HEROMOTOCO | 20-Oct-15 | 500067 | BLUESTARCO | 26-Oct-15 |
| 533047 | IMFA | 20-Oct-15 | 500010 | HDFC | 26-Oct-15 |
| 502330 | IPAPPM | 20-Oct-15 | 509675 | HIL | 26-Oct-15 |
| 532926 | JYOTHYLAB | 20-Oct-15 | 523398 | HITACHIOM | 26-Oct-15 |
| 500233 | KAJARIACER | 20-Oct-15 | 533217 | HMVL | 26-Oct-15 |
| 526299 | MPHASIS | 20-Oct-15 | 531319 | MARUTISE | 26-Oct-15 |
| 539015 | ORTEL | 20-Oct-15 | 532988 | RANEENGINE | 26-Oct-15 |
| 500337 | PRIMESECU | 20-Oct-15 | 512115 | ROSEMER | 26-Oct-15 |
| 532661 | RML | 20-Oct-15 | 532390 | TAJGVK | 26-Oct-15 |
| 500674 | SANOFI | 20-Oct-15 | 538268 | WONDERLA | 26-Oct-15 |
| 501061 | SBBJ | 20-Oct-15 | 532215 | AXISBANK | 27-Oct-15 |
| 539268 | SYNGENE | 20-Oct-15 | 503960 | BBL | 27-Oct-15 |
| 532794 | ZEEMEDIA | 20-Oct-15 | 531530 | BETALA | 27-Oct-15 |
| 522134 | ARTSONEN | 21-Oct-15 | 506395 | COROMANDEL | 27-Oct-15 |
| 532977 | BAJAJ-AUTO | 21-Oct-15 | 523708 | EIMCOELECO | 27-Oct-15 |
| 500490 | BAJAJHLDNG | 21-Oct-15 | 511676 | GICHSGFIN | 27-Oct-15 |
| 532792 | CAIRN | 21-Oct-15 | 505283 | KIRLPNU | 27-Oct-15 |
| 500180 | HDFCBANK | 21-Oct-15 | 532504 | NAVINFLUOR | 27-Oct-15 |
| 532822 | IDEA | 21-Oct-15 | 531209 | NUCLEUS | 27-Oct-15 |
| 538835 | INTELLECT | 21-Oct-15 | 523642 | PIIND | 27-Oct-15 |
| 500228 | JSWSTEEL | 21-Oct-15 | 500411 | THERMAX | 27-Oct-15 |
| 532400 | KPIT | 21-Oct-15 | 500008 | AMARAJABAT | 28-Oct-15 |
| 532720 | M&MFIN | 21-Oct-15 | 500425 | AMBUJACEM | 28-Oct-15 |
| 532756 | MAHINDCIE | 21-Oct-15 | 521210 | CITYMAN | 28-Oct-15 |
| 500304 | NIITLTD | 21-Oct-15 | 500096 | DABUR | 28-Oct-15 |
| 532481 | NOIDATOLL | 21-Oct-15 | 505700 | ELECON | 28-Oct-15 |
| 532301 | TATACOFFEE | 21-Oct-15 | 533208 | EMAMIPAP | 28-Oct-15 |
| 514142 | TTL | 21-Oct-15 | 531600 | GOGIACAP | 28-Oct-15 |
| 507685 | WIPRO | 21-Oct-15 | 532662 | HTMEDIA | 28-Oct-15 |
| 531335 | ZYDUSWELL | 21-Oct-15 | 500306 | JAYKAY | 28-Oct-15 |

| | | | | | |
|--------|------------|-----------|--------|------------|-----------|
| 524378 | JMDEPACKR | 28-Oct-15 | 538876 | STSERV | 30-Oct-15 |
| 533293 | KIRLOSENG | 28-Oct-15 | 517168 | SUBROS | 30-Oct-15 |
| 500264 | MAFATIND | 28-Oct-15 | 501110 | SUNRINV | 30-Oct-15 |
| 531039 | MSECURI | 28-Oct-15 | 500114 | TITAN | 30-Oct-15 |
| 512309 | ROSETEX | 28-Oct-15 | 524129 | VINYLINDIA | 30-Oct-15 |
| 522034 | SHANTIGEAR | 28-Oct-15 | 531519 | ANKUSHFI | 31-Oct-15 |
| 502180 | SHREDIGCEM | 28-Oct-15 | 526125 | ARHNTTO | 31-Oct-15 |
| 532498 | SHRIRAMCIT | 28-Oct-15 | 521216 | DHANROTO | 31-Oct-15 |
| 500830 | COLPAL | 29-Oct-15 | 500171 | GHCL | 31-Oct-15 |
| 532526 | DISHMAN | 29-Oct-15 | 500660 | GLAXO | 31-Oct-15 |
| 500124 | DRREDDY | 29-Oct-15 | 532659 | IDFC | 31-Oct-15 |
| 503681 | ELCIDIN | 29-Oct-15 | 500220 | JASCH | 31-Oct-15 |
| 531162 | EMAMILTD | 29-Oct-15 | 530405 | JINDCAP | 31-Oct-15 |
| 504840 | KAIRA | 29-Oct-15 | 532644 | JKCEMENT | 31-Oct-15 |
| 521242 | KANDAGIRI | 29-Oct-15 | 508993 | KEDIACN | 31-Oct-15 |
| 500250 | LGBBROSLTD | 29-Oct-15 | 511728 | KZLFIN | 31-Oct-15 |
| 517449 | MAGNAELQ | 29-Oct-15 | 531221 | MAYURFL | 31-Oct-15 |
| 500452 | NEPCAGRO | 29-Oct-15 | 526935 | MBPARIKH | 31-Oct-15 |
| 500301 | NEPCMICON | 29-Oct-15 | 526891 | MKTCREAT | 31-Oct-15 |
| 531077 | NEPCPAPER | 29-Oct-15 | 508875 | NITINALOY | 31-Oct-15 |
| 521192 | NEPCTEX | 29-Oct-15 | 511403 | SAIJEEV | 31-Oct-15 |
| 500790 | NESTLEIND | 29-Oct-15 | 521234 | SRINACHA | 31-Oct-15 |
| 500313 | OILCOUNTUB | 29-Oct-15 | 506655 | SUDARSCHEM | 31-Oct-15 |
| 501154 | ROSEI | 29-Oct-15 | 524038 | VENLONENT | 31-Oct-15 |
| 500472 | SKFINDIA | 29-Oct-15 | 508933 | WELSPSY | 31-Oct-15 |
| 509930 | SUPREMEIND | 29-Oct-15 | 538873 | WINYCOMM | 31-Oct-15 |
| 500420 | TORNTPHARM | 29-Oct-15 | 500136 | ESTER | 02-Nov-15 |
| 514470 | WINSOMTX | 29-Oct-15 | 500500 | HINDMOTORS | 02-Nov-15 |
| 533227 | AHLEAST | 30-Oct-15 | 500252 | LAXMIMACH | 02-Nov-15 |
| 532166 | ALKASEC | 30-Oct-15 | 506590 | PHILIPCARB | 02-Nov-15 |
| 500877 | APOLLOTYRE | 30-Oct-15 | 503837 | SHRAJSYNQ | 02-Nov-15 |
| 500027 | ATUL | 30-Oct-15 | 500403 | SUNDRMFAST | 02-Nov-15 |
| 500049 | BEL | 30-Oct-15 | 507747 | TTKHEALTH | 02-Nov-15 |
| 500147 | CMIFPE | 30-Oct-15 | 511764 | UPASAFN | 02-Nov-15 |
| 523754 | EPCIN | 30-Oct-15 | 539118 | VRLLG | 02-Nov-15 |
| 532174 | ICICIBANK | 30-Oct-15 | 500002 | ABB | 03-Nov-15 |
| 532612 | INDOCO | 30-Oct-15 | 523411 | ADCINDIA | 03-Nov-15 |
| 506161 | ISHWATR | 30-Oct-15 | 509480 | BERGEPAIN | 03-Nov-15 |
| 500247 | KOTAKBANK | 30-Oct-15 | 500085 | CHAMBLFERT | 03-Nov-15 |
| 532652 | KTKBANK | 30-Oct-15 | 532865 | MEGH | 03-Nov-15 |
| 532313 | MAHLIFE | 30-Oct-15 | 500338 | PRISMCEM | 03-Nov-15 |
| 530243 | MANGASOF | 30-Oct-15 | 523236 | SHRENUJ | 03-Nov-15 |
| 500126 | MERCK | 30-Oct-15 | 534369 | TBZ | 03-Nov-15 |
| 509196 | MMRUBBR-B | 30-Oct-15 | 532755 | TECHM | 03-Nov-15 |
| 531049 | NEELKAN | 30-Oct-15 | 500414 | TIMEX | 03-Nov-15 |
| 500730 | NOCIL | 30-Oct-15 | 532548 | CENTURYPLY | 04-Nov-15 |
| 502420 | ORIENTPPR | 30-Oct-15 | 533150 | GODREJPROP | 04-Nov-15 |
| 532915 | RELIGARE | 30-Oct-15 | 509162 | INDAG | 04-Nov-15 |
| 519230 | RICHIRICH | 30-Oct-15 | 532945 | SHRIRAMEPC | 04-Nov-15 |

| | | | | | |
|--------|------------|-----------|--------|------------|-----------|
| 524542 | SUKHJITS | 04-Nov-15 | 507966 | RASRESOR | 06-Nov-15 |
| 532156 | VAIBHAVGBL | 04-Nov-15 | 532515 | TVTODAY | 06-Nov-15 |
| 500645 | DEEPAKFERT | 05-Nov-15 | 500069 | BNKCAP | 07-Nov-15 |
| 500133 | ESABINDIA | 05-Nov-15 | 532133 | IFGLREFRAC | 07-Nov-15 |
| 505790 | FAGBEARING | 05-Nov-15 | 502150 | KLYNCEM | 07-Nov-15 |
| 517044 | IDM | 05-Nov-15 | 502450 | SESHAPAPER | 07-Nov-15 |
| 519606 | INTEGFD | 05-Nov-15 | 520113 | VESUVIUS | 07-Nov-15 |
| 531213 | MANAPPURAM | 05-Nov-15 | 523248 | MACPLASQ | 08-Nov-15 |
| 532097 | MUKANDENGG | 05-Nov-15 | 500547 | BPCL | 09-Nov-15 |
| 520151 | SHREYAS | 05-Nov-15 | 530171 | DAULAT | 09-Nov-15 |
| 503804 | SHRIDINE | 05-Nov-15 | 505800 | RANEHOLDIN | 09-Nov-15 |
| 521232 | SUNILTX | 05-Nov-15 | 532509 | SUPRAJIT | 09-Nov-15 |
| 500470 | TATASTEEL | 05-Nov-15 | 522113 | TIMKEN | 09-Nov-15 |
| 523319 | BALMLAWRIE | 06-Nov-15 | 526775 | VALIANT | 09-Nov-15 |
| 532485 | BLIL | 06-Nov-15 | 500202 | INDLEASE | 13-Nov-15 |
| 514440 | BPTX | 06-Nov-15 | 501343 | MOTOGENFIN | 13-Nov-15 |
| 522261 | DOLPHINOFF | 06-Nov-15 | 530897 | NGIND | 13-Nov-15 |
| 523736 | DPL | 06-Nov-15 | 526947 | LAOPALA | 14-Nov-15 |
| 500164 | GODREJIND | 06-Nov-15 | 530125 | SAMRATPH | 14-Nov-15 |
| 500520 | M&M | 06-Nov-15 | 500387 | SHREECEM | 14-Nov-15 |
| 532777 | NAUKRI | 06-Nov-15 | 511626 | RRFIN | 14-Dec-15 |
| 532460 | PONNIERODE | 06-Nov-15 | 500260 | RAMCOCEM | 06-Nov-15 |

Economic Calendar

| Country | Monday 12th Oct 15 | Tuesday 13th Oct 15 | Wednesday 14th Oct 15 | Thursday 15th Oct 15 | Friday 16th Oct 15 |
|---------------------|---|--|--|---|--|
| US | 30-y Bond Auction . | NFIB Small Business Index . | Core Retail Sales m/m , PPI m/m , Retail Sales m/m , Core PPI m/m , Business Inventories m/m , Crude Oil Inventories . | CPI m/m , Core CPI m/m , Unemployment Claims , Empire State Manufacturing Index , Philly Fed Manufacturing Index , Natural Gas Storage , Beige Book . | Capacity Utilization Rate , Industrial Production m/m , Prelim UoM Consumer Sentiment , JOLTS Job Openings , Prelim UoM Inflation Expectations , TIC Long-Term Purchases . |
| UK/EURO ZONE | CB Leading Index m/m , BRC Retail Sales Monitor y/y . | German Final CPI m/m , French CPI m/m , German ZEW Economic Sentiment , ZEW Economic Sentiment , 10-y Bond Auction , | CPI y/y , PPI Input m/m , RPI y/y , Industrial Production m/m , German 10-y Bond Auction , Spanish 10-y Bond Auction , | Average Earnings Index 3m/y , Claimant Count Change , Unemployment Rate , CBI Industrial Order Expectations , | German WPI m/m , Final CPI y/y , Final Core CPI y/y , Trade Balance . |
| INDIA | IIP Data . | CPI Data | WPI Data . | | |



(Regn. No. : INP 000004011)

Narnolia Securities Ltd.

Narnolia Research Lab

Stellar IT Park | 5th Floor | Office Space No. 6 | Tower-II Ind Plot No. C-25 | Sector-62 | Noida
| Ph : 0120-4215110

Central Strategy Desk - Kolkata

124 | 1st Floor | 7/1 Lords Sinha Road | Kolkata - 71
Ph : 033-22821500 | M : 93347 14418, 98302 69810