

SGX NIFTY : 7572 (35 Pt Up)

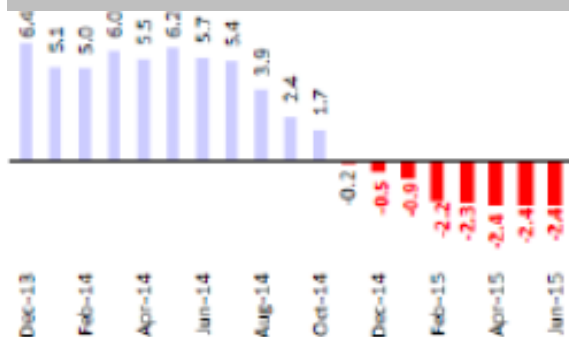
Quote of the Day

"Surprise and shock are endemic to the system, and people should always arrange their affairs so that they will survive such events. They will end up richer that way than focusing all the time on getting rich."

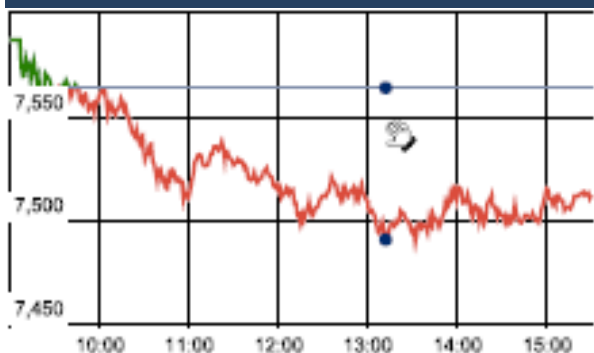
Peter Bernstein

Chart of the Day

WPI Trend



Index Action Nifty (11th Jan 16)



Index

Contents	Page	Coverage
News	2	Update
Economic Calendar	3	Update

Market

Name	Value	Change
Sensex	24,825.04	(109.29)
Nifty	7510.30	(53.55)
DOW	16,398.57	52.12
NASDAQ	4,685.92	47.93
CAC	4,378.75	66.01
DAX	9,985.43	160.36
FTSE	5,929.24	57.41
NIKKIE	17,645.06	426.10
HANG SENG	20,161.90	450.14
EW ALL SHARE	13535.48	(86.62)

Institutional Turnover

FII

Investor	Buy(Cr.)	Sale(Cr.)	Net(Cr.)
12-Jan-16	3090.47	3631.46	(540.99)
Jan,16	24112.93	29295.79	(5182.86)
2016	12653.02	9907.41	2745.61

DII

Investor	Buy(Cr.)	Sale(Cr.)	Net(Cr.)
12-Jan-16	1860.65	1719.40	141.25
Jan,16	24112.93	29295.79	(5182.86)
2016	12653.02	9907.41	2745.61

Commodity Price

Commodity/Currencies	Value	
GOLD	25674.00	↓
SILVER	33389.00	↓
CRUDEOIL	31.12	↓
COPPER	292.70	↓
NATURALGAS	153.40	↓
DOLLAR/RS.	66.81	↓
EURO/RS.	72.35	↓
POUND/RS.	96.55	↓

Market Snapshot

Top Price Performers

Top Performers 1D	% Change	Top Performers 1W	% Change	Top Performers 1M	% Change
CIMMCO	19.99	EMPEESUG	66.79	SPENTEX	137.43
SMOBILITY	19.84	SHIV-VANI	59.27	ZYLOG	114.85
EMPEESUG	19.01	MUKTAARTS	42.51	JINDCOT	97.53
SHIV-VANI	18.10	SMOBILITY	38.75	SUDAR	95.17
MUKTAARTS	9.97	WESTE	37.79	SURANACORP	93.55

Worst Performers 1D	% Change	Worst Performers 1W	% Change	Worst Performers 1M	% Change
ASHAPURMIN	(13.19)	ESSDEE	(36.04)	ESSDEE	(38.80)
CALSREF	(12.50)	CHROMATIC	(24.67)	OUTCTYTRVL	(24.60)
THIRUSUGAR	(9.99)	VALECHAENG	(22.41)	SUNILHITEC	(24.31)
TIDEWATER	(9.92)	EUROCERA	(22.34)	SHRENUJ	(23.83)
SURANAIND	(9.82)	SARLAPOLY	(21.17)	MARATHON	(23.57)

Top News

- **Canara Bank** says -Will move to 4-tier system from the existing system of 3-tier . 4-tier system will help improve business & profitability . Bank Will move to 4-tier system in FY17 in a phased manner . Moving to 4-tier system will strengthen control mechanism
- **UltraTech Cement Ltd**, backed by K.M. Birla, may buy a controlling stake in ARM Cement Ltd of Kenya . ARM announced on 23 December it's in talks with an unidentified institutional investor about a \$125 million investment. Chief executive officer Pradeep Paurana declined to comment on Tuesday when Bloomberg called him, citing regulatory compliance.
- **Tata Power Company** has successfully issued and allotted 5,000 unsecured, non-cumulative, redeemable, taxable, listed, rated Non-Convertible Debentures (NCDs) of the face value of Rs 10 lakh each aggregating Rs 500 crore on a private placement basis. These NCDs carry a floating interest rate linked to base rate of State Bank of India and have been rated CARE AA by CAR.
- **Bajaj Corporation Ltd (BCL)** plans to pursue acquisitions targeting niche brands and tap rural areas to push growth, particularly in light hair oil segment, where it aims to have a market share of 65 percent. The company, which has key brands, Almond Drops, Brahmi Amla, Jasmine, Kailash Parbat, Amla Shikakai in its hair care portfolio, said it "will seek inorganic growth opportunities in the FMCG and hair oil market as part of growth strategy
- **GMR Infrastructure Ltd** has informed that 5MW Solar Power Plant Operational at GMR Hyderabad International Airport".
- **Bharti Airtel says**
Orange to acquire company's operations in Burkina Faso & Sierra Leone . Orange will acquire 100 percent of the two companies' share capital . Consolidated revenue of 2 companies is around 275 million euro . Acquisitions will be implemented in partnership with Orange's subsidiaries . Outlay for Orange will be based on financials of company's two arms for FY16
- **Time Technoplast Mgt Guideline** : Company has launched composite plastic LPG cylinders under the name of "LiteSafe". Time Technoplast will generate Rs 35 crore revenues in FY16 and Rs 170 crore in FY17 from composite cylinders. Company expects larger order for plastic cylinders post successful trial by March 16.
- **IGL** has received approval from the Oil Ministry to set up CNG pumps at oil marketing companies (OMC's) fuel outlets and may also receive new sites to establish fuel outlets in the.
- **Dec 2015 , Indian CPI Inflation** at 5.61% Vs 5.41% (MoM) . Dec 2015 , Food Inflation @ 6.4% Vs 6.07% (MoM) . Dec 2015 , Rural Inflation at 6.32% Vs 5.95% (MoM) . Dec 2015 , Urban Inflation at 4.73% Vs 4.71% (MoM) .
- **Nov Indian IIP Growth down** at (-3.2%) Vs 1.81% (Expectation) Vs 9.8% (MoM) . Nov , Manufacturing Sector Growth at -4.4% Vs 10.6% (MoM) . Nov 2015 , Mining Sector Growth at 2.3% Vs 4.2% (MoM) . Nov 2015 , Electricity Sector Growth at 0.7% Vs 9% (MoM) . Nov 2015 , Basic Good Sector Growth at -0.7% Vs 4.1% (MoM) .
- **U.K. manufacturing production** decreased by a seasonally adjusted 0.4% in November, disappointing expectations for a gain of 0.1% and following a decline of 0.4% a month earlier.
- **Japan's Bank Lending** fell to a seasonally adjusted annual rate of 2.2%, from 2.3% in the preceding quarter. Analysts had expected Japan's Bank Lending to remain unchanged at 2.3% in the last quarter.
- **Japan's Economy Watchers Current Index** rose to a seasonally adjusted 48.7, from 46.1 in the preceding month. Analysts had expected Japan's Economy Watchers Current Index to rise to 46.7 last month.

Result Calendar Q3FY16

BSE Code	Company Name	Date	BSE Code	Company Name	Date
531247	ALPHA	13-Jan-16	517320	SAVINFOCO	16-Jan-16
535486	DELTALTD	13-Jan-16	511756	ABIRAFN	18-Jan-16
508906	EVERESTIND	13-Jan-16	526847	ASHSI	18-Jan-16
590003	KARURVYSYA	13-Jan-16	500820	ASIANPAINT	18-Jan-16
531212	NALINLEA	13-Jan-16	503960	BBL	18-Jan-16
539016	NEIL	13-Jan-16	512608	BHANDHOS	18-Jan-16
535658	PAWANSUT	13-Jan-16	523229	BHARATSE	18-Jan-16
523445	RIIL	13-Jan-16	532848	DELTACORP	18-Jan-16
538611	RTFL	13-Jan-16	500186	HINDOILEXP	18-Jan-16
533101	SURYAAMBA	13-Jan-16	500247	KOTAKBANK	18-Jan-16
538465	AMARSEC	14-Jan-16	532819	MINDTREE	18-Jan-16
590122	ASHIKACR	14-Jan-16	530175	ODYSSEY	18-Jan-16
532175	CYIENT	14-Jan-16	500355	RALLIS	18-Jan-16
590080	EASTERNGAS	14-Jan-16	520086	SICAL	18-Jan-16
538708	ETIL	14-Jan-16	513262	SSWL	18-Jan-16
500209	INFY	14-Jan-16	513434	TATAMETALI	18-Jan-16
526865	JAINCO	14-Jan-16	504966	TINPLATE	18-Jan-16
532637	MANGALAM	14-Jan-16	517506	TTKPRESTIG	18-Jan-16
523704	MASTEK	14-Jan-16	539331	VETO	18-Jan-16
533399	PARAPRINT	14-Jan-16	507685	WIPRO	18-Jan-16
500337	PRIMESECU	14-Jan-16	531147	ALICON	19-Jan-16
501833	CHOWGULSTM	15-Jan-16	522134	ARTSONEN	19-Jan-16
531471	DUKEOFS	15-Jan-16	531340	BERVINL	19-Jan-16
511288	GRUH	15-Jan-16	532760	DEEPIND	19-Jan-16
506879	GUJTHEM	15-Jan-16	526797	GREENPLY	19-Jan-16
500696	HINDUNILVR	15-Jan-16	532281	HCLTECH	19-Jan-16
500850	INDHOTEL	15-Jan-16	500188	HINDZINC	19-Jan-16
509069	INFOMEDIA	15-Jan-16	539116	OPCHAINS	19-Jan-16
507948	KEYCORP	15-Jan-16	532742	PAUSHAKLTD	19-Jan-16
500458	KORE	15-Jan-16	524570	PODARPIGQ	19-Jan-16
512455	LLOYDSME	15-Jan-16	532215	AXISBANK	20-Jan-16
511000	MADHUSE	15-Jan-16	511501	BHARAT	20-Jan-16
511766	MUTHTFN	15-Jan-16	511072	DHFL	20-Jan-16
532798	NETWORK18	15-Jan-16	513108	GANDHITUBE	20-Jan-16
532541	NIITTECH	15-Jan-16	532345	GATI	20-Jan-16
533273	OBEROIRLTY	15-Jan-16	532764	GEECEE	20-Jan-16
533107	PIPAVAVDOC	15-Jan-16	533148	JSWENERGY	20-Jan-16
507649	RASOI	15-Jan-16	532400	KPIT	20-Jan-16
590005	TIDEWATER	15-Jan-16	500262	MAFATLAFIN	20-Jan-16
532800	TV18BRDCST	15-Jan-16	523828	MENONBE	20-Jan-16
511736	USHDI	15-Jan-16	531209	NUCLEUS	20-Jan-16
505537	ZEEL	15-Jan-16	532663	SASKEN	20-Jan-16
520066	JAYBARMARU	16-Jan-16	532218	SOUTHBANK	20-Jan-16
532652	KTKBANK	16-Jan-16	512257	SVARTCORP	20-Jan-16
533602	LESHAIND	16-Jan-16	510245	SWASTIVI	20-Jan-16
500253	LICHSGFIN	16-Jan-16	500408	TATAELXSI	20-Jan-16
526235	MERCATOR	16-Jan-16	513010	TATASPONGE	20-Jan-16

532538	ULTRACEMCO	20-Jan-16	532661	RML	25-Jan-16
533573	APLLTD	21-Jan-16	512309	ROSETEX	25-Jan-16
500215	ATFL	21-Jan-16	509930	SUPREMEIND	25-Jan-16
500059	BINANIIND	21-Jan-16	531652	THIRDFIN	25-Jan-16
532523	BIOCON	21-Jan-16	532156	VAIBHAVGBL	25-Jan-16
506365	CHEMOPH	21-Jan-16	502986	VTL	25-Jan-16
500645	DEEPAKFERT	21-Jan-16	505412	WENDT	25-Jan-16
523708	EIMCOELECO	21-Jan-16	532774	AFL	27-Jan-16
500086	EXIDEIND	21-Jan-16	500049	BEL	27-Jan-16
500150	FOSECOIND	21-Jan-16	500830	COLPAL	27-Jan-16
500690	GSFC	21-Jan-16	507886	DHRUVES	27-Jan-16
519552	HERITGFOOD	21-Jan-16	523736	DPL	27-Jan-16
502330	IPAPPM	21-Jan-16	533208	EMAMIPAP	27-Jan-16
532720	M&MFIN	21-Jan-16	532424	GODREJCP	27-Jan-16
539268	SYNGENE	21-Jan-16	509488	GRAPHITE	27-Jan-16
501242	TCIFINANCE	21-Jan-16	500010	HDFC	27-Jan-16
509966	VSTIND	21-Jan-16	532662	HTMEDIA	27-Jan-16
532794	ZEEMEDIA	21-Jan-16	533293	KIRLOSENG	27-Jan-16
523411	ADCINDIA	22-Jan-16	500250	LGBBROSLTD	27-Jan-16
500027	ATUL	22-Jan-16	533007	LGBFORGE	27-Jan-16
532792	CAIRN	22-Jan-16	516062	NATPLY	27-Jan-16
511196	CANFINHOME	22-Jan-16	500730	NOCIL	27-Jan-16
500147	CMIFPE	22-Jan-16	532988	RANEENGINE	27-Jan-16
506395	COROMANDEL	22-Jan-16	512115	ROSEMER	27-Jan-16
500875	ITC	22-Jan-16	507984	SERIND	27-Jan-16
502937	KESORAMIND	22-Jan-16	532301	TATACOFFEE	27-Jan-16
505283	KIRLPNU	22-Jan-16	532432	UNITDSPR	27-Jan-16
533088	MHRIL	22-Jan-16	500096	DABUR	28-Jan-16
504398	SJCORP	22-Jan-16	531162	EMAMILTD	28-Jan-16
506680	TRELCHE-B	22-Jan-16	500171	GHCL	28-Jan-16
522267	VJLAXMIE	22-Jan-16	531600	GOGIACAP	28-Jan-16
534392	VSSL	22-Jan-16	532174	ICICIBANK	28-Jan-16
524019	HYDROS&S	23-Jan-16	505750	JOSTS	28-Jan-16
533179	PERSISTENT	23-Jan-16	532926	JYOTHYLAB	28-Jan-16
524037	RAMAPHO	23-Jan-16	501874	MACKINN	28-Jan-16
517447	RSSOFTWARE	23-Jan-16	500264	MAFATIND	28-Jan-16
506690	UNICHEMLAB	23-Jan-16	532313	MAHLIFE	28-Jan-16
520119	ASAL	25-Jan-16	531319	MARUTISE	28-Jan-16
526849	BANARBEADS	25-Jan-16	509196	MMRUBBR-B	28-Jan-16
512313	BIJLTEX	25-Jan-16	532777	NAUKRI	28-Jan-16
533167	COROENGG	25-Jan-16	500313	OILCOUNTUB	28-Jan-16
500180	HDFCBANK	25-Jan-16	511702	PARSHINV	28-Jan-16
533217	HMVL	25-Jan-16	532987	RBL	28-Jan-16
530055	HRMNYCP	25-Jan-16	532812	TFL	28-Jan-16
538835	INTELLECT	25-Jan-16	524129	VINYLINDIA	28-Jan-16
500165	KANSAINER	25-Jan-16	590013	XPROINDIA	28-Jan-16
500241	KIRLOSBROS	25-Jan-16	521097	AMARJOTHI	29-Jan-16
521248	KITEX	25-Jan-16	500067	BLUESTARCO	29-Jan-16
517449	MAGNAELQ	25-Jan-16	534804	CARERATING	29-Jan-16

511243	CHOLAFIN	29-Jan-16	500280	CENTENKA	2-Feb-16
526821	DAICHI	29-Jan-16	533150	GODREJPROP	2-Feb-16
532927	ECLERX	29-Jan-16	500266	MAHSCOOTER	2-Feb-16
503681	ELCIDIN	29-Jan-16	532978	BAJAFINSV	3-Feb-16
505700	ELECON	29-Jan-16	500034	BAJFINANCE	3-Feb-16
504387	ELFTRDG	29-Jan-16	506943	JBCHEPHARM	3-Feb-16
505714	GABRIEL	29-Jan-16	526947	LAOPALA	3-Feb-16
511676	GICHSGFIN	29-Jan-16	500252	LAXMIMACH	3-Feb-16
532100	INDOCITY	29-Jan-16	532865	MEGH	3-Feb-16
500228	JSWSTEEL	29-Jan-16	532915	RELIGARE	3-Feb-16
500243	KIRLOSIND	29-Jan-16	500387	SHREECEM	3-Feb-16
523207	KOKUYOCLMN	29-Jan-16	512527	SUPER	3-Feb-16
532504	NAVINFLUOR	29-Jan-16	507747	TTKHEALTH	3-Feb-16
504112	NELCO	29-Jan-16	532977	BAJAJ-AUTO	4-Feb-16
500452	NEPCAGRO	29-Jan-16	500490	BAJAJHLDNG	4-Feb-16
500301	NEPCMICON	29-Jan-16	509480	BERGEPAIN	4-Feb-16
531077	NEPCPAPER	29-Jan-16	532173	CYBERTECH	4-Feb-16
521192	NEPCTEX	29-Jan-16	522261	DOLPHINOFF	4-Feb-16
506590	PHILIPCARB	29-Jan-16	500211	INSILCO	4-Feb-16
532638	SHOPERSTOP	29-Jan-16	526299	MPHASIS	4-Feb-16
532498	SHRIRAMCIT	29-Jan-16	500470	TATASTEEL	4-Feb-16
538876	STSERV	29-Jan-16	500414	TIMEX	4-Feb-16
501110	SUNRINV	29-Jan-16	530783	TRANSASIA	4-Feb-16
532390	TAJGVK	29-Jan-16	500089	DICIND	5-Feb-16
532343	TVSMOTOR	29-Jan-16	532460	PONNIERODE	5-Feb-16
532953	VGUARD	29-Jan-16	530073	SANGHVIMOV	5-Feb-16
526125	ARHNTTO	30-Jan-16	514142	TTL	5-Feb-16
526187	ASHRAM	30-Jan-16	532867	V2RETAIL	5-Feb-16
530803	BHAGIL	30-Jan-16	531599	FDC	6-Feb-16
521216	DHANROTO	30-Jan-16	532133	IFGLREFRAC	6-Feb-16
531533	ECOM	30-Jan-16	523323	KOVAI	6-Feb-16
523754	EPCIN	30-Jan-16	524709	NAGAAGRI	6-Feb-16
530915	JRFOODS	30-Jan-16	526721	NICCOPAR	6-Feb-16
514448	JYOTIRES	30-Jan-16	526775	VALIANT	6-Feb-16
530139	KREONFIN	30-Jan-16	519174	ASHAI	8-Feb-16
530243	MANGASOF	30-Jan-16	530233	AUROLAB	9-Feb-16
531221	MAYURFL	30-Jan-16	530609	CARNATIN	9-Feb-16
514460	OSWAYRN	30-Jan-16	500260	RAMCOCEM	9-Feb-16
511403	SAJEEV	30-Jan-16	505800	RANEHOLDIN	9-Feb-16
502450	SESHAPAPER	30-Jan-16	520056	SUNCLAYLTD	9-Feb-16
539217	SRESTHA	30-Jan-16	522113	TIMKEN	9-Feb-16
521234	SRINACHA	30-Jan-16	511742	CHOKSEC	10-Feb-16
506655	SUDARSHEM	30-Jan-16	500660	GLAXO	10-Feb-16
521228	TATIAGLOB	30-Jan-16	509162	INDAG	10-Feb-16
539488	TFL	30-Jan-16	531626	OROSMITHS	10-Feb-16
524038	VENLONENT	30-Jan-16	530669	PRESOFI	10-Feb-16
538873	WINYCOMM	30-Jan-16	502180	SHREDIGCEM	10-Feb-16
526831	NAINAMS	31-Jan-16	524542	SUKHJITS	10-Feb-16
514045	BSL	1-Feb-16	590043	HARITASEAT	11-Feb-16
532349	TCI	1-Feb-16	532097	MUKANDENGG	11-Feb-16
533393	TCIDEVELOP	1-Feb-16	500338	PRISMCEM	11-Feb-16
532755	TECHM	1-Feb-16	531500	RAJESHEXPO	11-Feb-16

517273	S&SPOWER	11-Feb-16	501343	MOTOGENFIN	12-Feb-16
500041	BANARISUG	12-Feb-16	500790	NESTLEIND	12-Feb-16
514440	BPTX	12-Feb-16	506128	PARNAXLAB	12-Feb-16
530171	DAULAT	12-Feb-16	523642	PIIND	12-Feb-16
532425	GULCHEM	12-Feb-16	526558	JAMEHOT	13-Feb-16
500202	INDLEASE	12-Feb-16	511644	OMEGAIN	13-Feb-16
500520	M&M	12-Feb-16	532756	MAHINDCIE	22-Feb-16
531213	MANAPPURAM	12-Feb-16	520113	VESUVIUS	26-Feb-16

Result Q3FY16

NSE CODE	BSE CODE	SALES Rs (cr.)	SALES YOY	PAT Rs Cr	PAT YOY
INDUSINDBK	532187	1173.42	36.22	581	29.97
DCB	532772	160.32	31.4	41.2	-3.05
FEDERALBNK	500469	605.2	3.07	162.72	-38.52
TCS	532540	27364	11.7	6109	14.7

Economic Calendar

Country	Monday 11th Jan 16	Tuesday 12th Jan 16	Wednesday 13th Jan 16	Thursday 14th Jan 16	Friday 15th Jan 16
US	Core Retail Sales m/m , PPI m/m , Retail Sales m/m , Core PPI m/m , Prelim UoM Consumer Sentiment , Business Inventories m/m , Prelim UoM Inflation Expectations	JOLTS Job Openings , FOMC Member Fischer Speaks , NFIB Small Business Index .	Crude Oil Inventories , 10-y Bond Auction , Federal Budget Balance .	Unemployment Claims , FOMC Member Bullard Speaks , Import Prices m/m .	Core Retail Sales m/m , PPI m/m , Retail Sales m/m , Core PPI m/m , Empire State Manufacturing Index, Prelim UoM Consumer Sentiment .
UK/EURO ZONE	German Final CPI m/m , German WPI m/m , French CPI m/m , Construction Output m/m , Targeted LTRO .	Manufacturing Production m/m , Industrial Production m/m .	Industrial Production m/m , French CPI m/m , German 10-y Bond Auction .	MPC Official Bank Rate Votes , Monetary Policy Summary , Official Bank Rate , Asset Purchase Facility , MPC Asset Purchase Facility Votes .	ECOFIN Meetings , Trade Balance , BOE Credit Conditions Survey.
INDIA		IIP Data		WPI Data	



(Regn. No. : INP 000004011)

Narnolia Securities Ltd.

Narnolia Research Lab

Stellar IT Park | 5th Floor | Office Space No. 6 | Tower-II | Ind Plot No. C-25 | Sector-62 | Noida | Ph :
0120-4215110

Central Strategy Desk - Kolkata

124 | 1st Floor | 7/1 Lords Sinha Road | Kolkata - 71
Ph : 033-22821500 | M : 93347 14418, 98302 69810