

SGX NIFTY : 7803 (65 Pt Up)

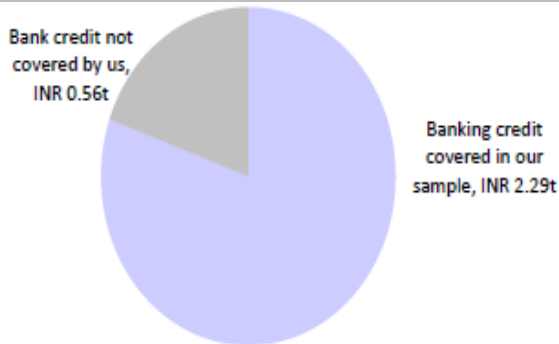
Quote of the Day

"Price fluctuations have only one significant meaning for the true investor. They provide him with an opportunity to buy wisely when prices fall sharply and to sell wisely when they advance a great deal. At other times he will do better if he forgets about the stock market and pays attention to...the operating results of his companies."

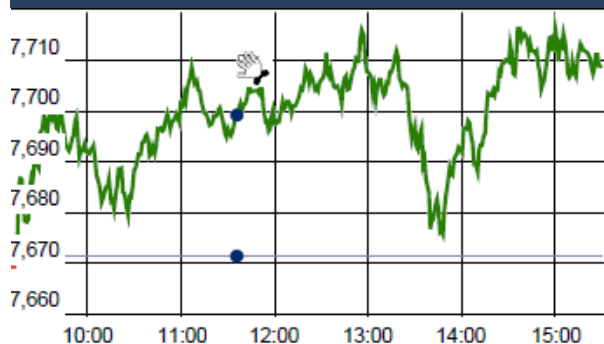
Ben Graham

Chart of the Day

Bank Credit to steel Sectors



Index Action Nifty (12th Apr 16)



Index

Contents	Page	Coverage
News	2	Update
Economic Calendar	3	Update

Market

Name	Value	Change
Sensex	25,145.59	123.43
Nifty	7708.95	37.55
DOW	17,602.30	120.81
NASDAQ	4,872.09	38.69
CAC	4,345.91	33.28
DAX	9,761.41	7848.00
FTSE	6,242.39	42.27
NIKKEI	16,349.82	421.08
HANG SENG	20,946.46	441.63
EW ALL SHARE	13413.55	81.82

Instituional Turnover

FII

Investor	Buy(Cr.)	Sale(Cr.)	Net(Cr.)
12-Apr-16	3149.90	2842.18	307.72
Mar,16	4308.60	4983.92	(675.32)
2016	826265.95	824114.23	2151.72

DII

Investor	Buy(Cr.)	Sale(Cr.)	Net(Cr.)
12-Apr-16	1674.55	1736.29	(61.74)
Mar,16	2396.86	1714.93	681.93
2016	328695.18	286062.29	42632.89

Commodity Price

Commodity/Currencies	Value	
GOLD	29336.00	↑
SILVER	38312.00	↑
CRUDEOIL	41.86	↑
COPPER	315.15	↑
NATURALGAS	131.50	↑
DOLLAR/RS.	66.43	↑
EURO/RS.	75.44	↑
POUND/RS.	94.64	↑

Top Price Performers

Top Performers 1D	% Change	Top Performers 1W	% Change	Top Performers 1M	% Change
PANORAMUNI	20.00	ELECTHERM	56.54	KIRIINDUS	126.29
ELECTHERM	19.98	SIMPLEX	55.94	UTTAMSUGAR	119.73
SUPREMEINF	19.09	MEGASOFT	42.25	DHARSUGAR	104.70
RSSOFTWARE	18.25	SAGCEM	38.31	THIRUSUGAR	98.41
GOACARBON	17.38	LLOYDMETAL	34.08	KAKATCEM	93.48

Worst Performers 1D	% Change	Worst Performers 1W	% Change	Worst Performers 1M	% Change
CALSREF	(14.29)	VIVIMEDLAB	(79.41)	VIVIMEDLAB	(78.94)
CHROMATIC	(10.78)	CHROMATIC	(26.07)	RAINBOWPAP	(61.37)
JSL	(10.24)	KSOILS	(21.60)	RICOHQ	(42.44)
COMFINTE	(10.08)	GMBREW	(21.22)	GLOBOFFS	(34.13)
PARABDRUGS	(8.81)	ISMTLTD	(17.39)	IVRCLINFRA	(33.16)

Top News

- **Future Group** plans to invest Rs 250-300 crore in FY17 to grow Future Lifestyle Fashion (FLF), said Kishore Biyani, founder and chief executive of the group, in an interview to CNBC-TV18. The strategy for the current year is to achieve revenue of Rs 5,000 crore and be cash positive . the company will launch 11 Brand Factory stores and 9 Central stores during FY17. Brand Factory, an all-year discount store, and Central are part of FLF. Future Group currently has 8-9 reasonably-sized investments that are mature now and the company will consider divesting them in the current year. This will include divesting the 6.0-6.5 percent stake that they have in sportswear company SSIPL via an initial public offer (IPO)

- **Two years of drought** have adversely impacted Insecticides . The El-Nino years [2014-15] have been very bad. It has been really a tough time for the farmer and for agro-chemical companies during this period . The company expects to achieve 20-25 percent growth in FY17 . While the company's margins dipped owing to discounts it offered to create demand, Insecticides still expects to benefit from economies of scale

- **MEP Infrastructure Developers** has bagged a Rs 826-crore order for four-laning of Kante Waked section on National Highway 66 in Maharashtra. MEP along with its joint venture partner Sanjose India Infrastructure and Construction has been declared as a successful bidder by the Road Transport and Highways Ministry for a project under the hybrid annuity model for four-laning of Kante Waked section of NH-66 in Maharashtra worth Rs 826.28 crore

- **Inox Wind Ltd** said it has bagged two wind energy projects totalling 70 MW from Adani Green Energy Ltd an arm of Adani Enterprises Ltd. Inox Wind inked two contracts for a cumulative capacity of 70 MW with Adani Green Energy Ltd, a wholly-owned subsidiary of Adani Enterprises Limited and part of the Adani Group

- **JP Associates** has pulled out of the project to set up an electronic chip plant that entailed an investment of about Rs 34,000 crore. JP Associates has withdrawn its proposal of semiconductor plant. They have said that it is not commercially viable to set up this plant at present,

- **Sundram Fasteners' subsidiary** TVS Infotech has acquired 90 percent of the equity share capital of Blisslogix Technology Solutions.

- **Index of industrial production (IIP)**, rose to 2 percent compared to estimates of 1.5 percent. March CPI falls to 4.83% . Retail inflation fell to 4.83 percent, compared to economists' forecast of 5.05 percent, while industrial output rose to 2 percent compared to estimates of 1.5 percent.

- **Japan's M2 Money Stock remained** unchanged at a seasonally adjusted 3.2%, from 3.2% in the preceding month whose figure was revised up from 3.1%. Analysts had expected Japan's M2 Money Stock to remain unchanged at 3.1% last month.

- **Japan's Corporate Goods Price Index** fell to a seasonally adjusted annual rate of -3.8%, from -3.4% in the preceding month. Analysts had expected Japan's Corporate Goods Price Index to fall to -3.5% last month

- **The U.S. government** posted a \$108 billion budget deficit in March . March would have shown a \$102 billion deficit compared with an adjusted \$89 billion deficit in March 2015.

- **U.S. Bureau of Labor Statistics said import prices increased** by a seasonally adjusted 0.2% last month, compared to forecasts for a 1.0% rise. Import prices fell by 0.4% in February, revised from an initial reading of a 0.3% decline.

Economic Calendar

Country	Monday 11th April 16	Tuesday 12th April 16	Wednesday 13th April 16	Thursday 14th April 16	Friday 15th April 16
US	Federal Budget Balance	Import Prices m/m ,	Core Retail Sales m/m ,PPI m/m , Retail Sales m/m , Core PPI m/m , Empire State Manufacturing Index , Business Inventories m/m , Crude Oil Inventories , 10-y Bond Auction , Beige Book .	CPI m/m , Core CPI m/m , Unemployment Claims , Natural Gas Storage , 30-y Bond Auction , TIC Long-Term Purchases.	Empire State Manufacturing Index , Capacity Utilization Rate , Industrial Production m/m , Prelim UoM Consumer Sentiment , Prelim UoM Inflation Expectations .
UK/EURO ZONE	Sentix Investor Confidence	CPI y/y ,PPI Input m/m , RPI y/y , Core CPI y/y , HPI y/y , PPI Output m/m , German Final CPI m/m , Italian Industrial Production m/m .	Italian Trade Balance , BOE Credit Conditions Survey, Industrial Production m/m .	Final CPI y/y , Final Core CPI y/y , German 10-y Bond Auction , Spanish 10-y Bond Auction , MPC Official Bank Rate Votes , Monetary Policy Summary , Official Bank Rate , Asset Purchase Facility , MPC Asset Purchase Facility Votes.	German WPI m/m , Construction Output m/m , Trade Balance , French 10-y Bond Auction , 10-y Bond Auction.
INDIA		IIP Data .		WPI Data .	



(Regn. No. : INP 000004011)

Narnolia Securities Ltd.

Narnolia Research Lab

Stellar IT Park | 5th Floor | Office Space No. 6 | Tower-IIInd Plot No. C-25 | Sector-62 | Noida | Ph : 0120-4215110

Narnolia Securities Ltd.

201 | 2nd Floor | Marble Arch Building | 236B-AJC Bose Road Kolkata-700 020 Ph : 033-40501500
Email : narnolia@narnolia.com website :www.narnolia.com