

### KEY LEVELS

Support 1 : 9761

Support 2 : 9623

Resistance 1: 9855

### Event Today

#### Today Result

TCS, MCX, CYIENT,

HATSUN, RIIL

#### Concall

Bajaj Corp : 11:00 AM

Cyient Ltd : 4.15 PM

MCX : 6:30 PM, TCS : 7:00 PM

#### Dividend

ATUL : Rs 10/-, BHARTIARTL : Rs 1/-

COROMANDEL : Rs 1/-

DHFL : Rs 3/-, JOSTS : Rs 1/-

KELENRG : Rs 2.5/-, KIRLOSMBROS : Rs 1/-

LUMAXIND : Rs 14.5/-

M&M : Rs 13/-, MAHLIFE : Rs 6/-

MENNPIS : Rs 0.5/-

MPHASIS : Rs 17/-, NAUKRI : Rs 1.5/-

ONWARDTEC : Rs 1/-

PREMCO : Rs 3/-, RELIANCE : Rs 11/-

RPGLIFE : Rs 2.8/-, SASKEN : Rs 4.5/-

SHANTIGEAR : Rs 0.5/-, SILINV : 1.5/-

SUTLEJTEX : Rs 13/-, SWARAJAUTO : Rs 4/-

ATAMETALI : Rs 2.5/-, UNICHEMLAB : Rs 2/-

TIRUMALCHM : Rs 18.5/-, VFL : Rs 0.01/-

WABAG : Rs 4/-, ZUARI : Rs 1/-

ZUARIGLOB : Rs 1/-

( Exdate : 13.7.2017)

#### Bonus issue

BPCL ( Ratio : 1:2)

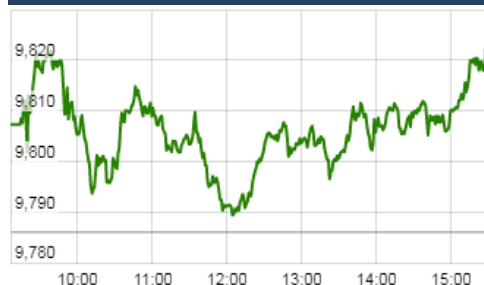
GPTINFRA ( Ratio 1:1)

CUB : ( Ratio 1:10)

LT ( Ratio 1:2)

( Exdate : 13.7.2017)

### Nifty Intraday Chart



### Market Outlook

After opening on a subdued note, Nifty rose to make a high of 9824.45 and then it fell to make a low of 9787.95. At the end of the day the index closed at 9816.10. It had a net gain of 0.31% over the previous day's close. The broader market was in favor of bulls as the midcap and small cap indices outshined the benchmark index and closed the day after gaining 0.7%-1%.

On the sectoral front, some buying interest was witnessed in Media, PSU banking and Financial Services stocks while Information Technology stocks have shown some weakness. The breadth of the market was positive and about three shares advanced for two shares declined at NSE.

On the sectoral front, some buying interest was witnessed in Auto and Information Technology stocks while the other major indices closed in red. The breadth of the market was negative and about two shares declined for every share advanced at NSE.

Nifty moved higher at the early hours of Tuesday's trade. However it was unable to maintain the same and fell from day's higher point towards the closing session. The breadth of the market was negative (947 shares declined as against 557 advanced at NSE). Some profit booking was also witnessed in Midcap and Small cap stocks though Nifty has made its new life time higher price at 9829.85. We believe something is missing in the market as per as strength is concern. Therefore we advise not to initiate fresh long position at the current level.

In terms of derivative structure, Nifty has strong support at 9600 for July series. But breadth of the market suggests weakness for mid and small cap indices and stocks.

**Quote of the Day** : "Even the intelligent investor is likely to need considerable willpower to keep from following the crowd." **Benjamin Graham**

### Market

Market	Value	% Change
<b>Morning Traded Market</b>		
SGX NIFTY	9,878.00	0.43%
NIKKIE	20133.11	0.17%
HANG SENG	26,340.29	1.13%
<b>Yesterday Closing Market</b>		
Sensex	31,804.00	0.18%
Nifty	9,816.10	0.31%
DOW	21,532.00	0.57%
NASDAQ	6,261.17	1.08%
CAC	5,222.13	1.56%
DAX	12,626.58	1.50%
FTSE	7,416.93	1.18%
EW ALL SHARE	17,805.00	0.55%

% Change in 1 day

### Commodity Price ( Yesterday Closing )

Commodity/Currencies	Value	% Change
GOLD	27851.00	0.06%
SILVER	36968.00	0.54%
CRUDEOIL	45.34	-0.33%
NATURALGAS	192.50	-2.18%
DOLLAR/RS.	64.54	-0.08%
EURO/RS.	73.93	0.44%
POUND/RS.	83.05	-0.40%

% Change in 1 day

### Institutional Turnover

FI			
Investor	Buy(Cr.)	Sale(Cr.)	Net(Cr.)
12-Jul-17	4563	4202	361
Jul-17	31325	32629	(1304)
2017	680580	659530	21050
DII			
Investor	Buy(Cr.)	Sale(Cr.)	Net(Cr.)
12-Jul-17	2604	2934	(331)
Jul-17	22896	19636	3261
2017	392344	368692	23652

**DBL** **"HOLD"**
**13th July 2017**

DBL is one of the best EPC Company in Engineering and Construction with strong execution capabilities. In FY17 DBL has completed 17 projects, out of this 10 projects were completed before its scheduled time. Early completion of projects helped DBL to earn Rs.103 Cr as early completion bonus which resulted in superior EBITDA margin compared to other players in the industry. Strong opening order book gives us the confidence of 15% plus revenue growth in EPC business going forward. Increasing contribution from Mining segment in top line will help to improve working capital cycle. Debt to equity will remain under control as the management introduces equity arrangement scheme for HAM projects. According to recent management interview, DBL will announce equity arrangement scheme by Q2FY18 which makes strong outlook going forward. The stock has achieved our recommend target price of Rs.504 but still we are positive on the stock and advice our investors to "HOLD" it. We will upgrade target price post the quarterly result.

**INDUSINDBK** **"NEUTRAL"**
**12th July 2017**

Among the mid size private bank, Indusind bank remains one of the consistent performers in growth and profitability parameter. Superior loan book growth, diversified fee income profile and low credit cost are the key drivers of the bank. However, due to BS4 implementation in vehicles and GST implementation in economy, credit growth of the system is expected to get impacted. For Indusind bank, we cut down loan growth estimate by 1% to 24% in near term as vehicle finance book and mid/small corporate book is expected to get impacted by BS4 norm, GST and loan waiver sentiment. Lower growth than expectation in consumer finance and focus on better rated corporate loan will impact the yield to decline significantly, however improving CASA ratio will offset the pressure to some extent. Hence we have cut our PAT estimate slightly by 1.6% for FY18 and expect RoA /RoE of 1.9%/16.5% in FY18. The stock trades at 3.5x FY19E P/BV, we maintain 'Neutral' view on this stock with our previous target price of Rs 1480.

\*For details, refer to our daily report- *India Equity Analytics*

**Top News**

**Bank of Baroda** has filed a petition against Binani Cement Ltd with the National Company Law Tribunal's (NCLT) Kolkata bench, seeking to recover Rs97 crore in an outstanding loan under the new Insolvency and Bankruptcy Code after the firm failed to come up with a restructuring plan to clear its dues.

**Era Infra Engineering Ltd** questioned the Delhi bench of the National Company Law Tribunal (NCLT) over whether insolvency proceedings can be initiated against it when winding-up petitions are pending against the company

**Housing & Urban Development Corporation (HUDCO)** 's board is going to consider issuing debentures up to Rs 100 crore plus greenshoe option on July 14.

**SBI** has waived charges for fund transfer of up to Rs 1,000 through its IMPS (Immediate Payment Service) to promote small transactions.

India's industrial output also fell to 1.7 percent in May from 3.1 percent in April. However, April IIP was revised to 2.8 percent from 3.1 percent. India's retail inflation cooled down to 1.54 percent in June from 2.18 percent in May, mainly due to goods and services tax-induced discounts. Core inflation rate was at 3.8 percent versus 4.2 percent month on month and food inflation came in at -1.17 percent versus -1.05 percent MoM.

**Hatsun Agro Product Ltd** has entered into a pact with Germany-based GEA for setting up its greenfield plant in Tamil Nadu. Hatsun Agro Product is currently establishing an automated greenfield dairy project at Dharapuram near Coimbatore in Tamil Nadu. The company has contracted GEA to install it (the factory) on turnkey basis.

**Magma Fincorp**, has plans to disburse Rs 6,000 crore this fiscal in the asset finance business category, a senior company official said today. In the asset finance category our disbursal in FY17 was Rs 4,700 crore and this year we would like to see a growth of 25 per cent over last year. Company is confident that FY18 would be a good year

**Andhra Bank** is planning to raise Rs 800-1,000 crore through a qualified institutional placement (QIP) in the next five months to fund growth . The lender is looking to close the QIP issue by December, which would bring down the government's shareholding in the bank below the 60 per cent mark

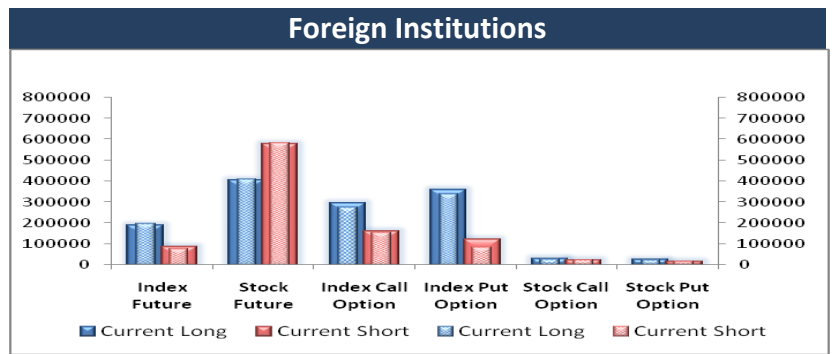
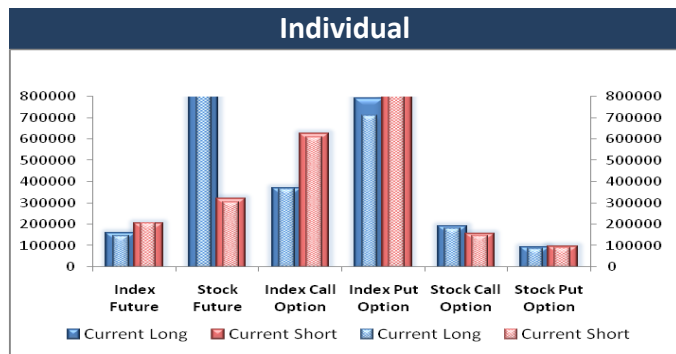
**Dilip Buildcon** is expected to announce its equity deal soon. The total value of company's assets, under-construction and completed, will be around Rs 1,500 crore.

**PNB Housing Finance** is confident of a better than industry growth rate and also maintaining margins at the current level. Company is doing very well and I think our growth rates will be far smarter than the industry growth rates

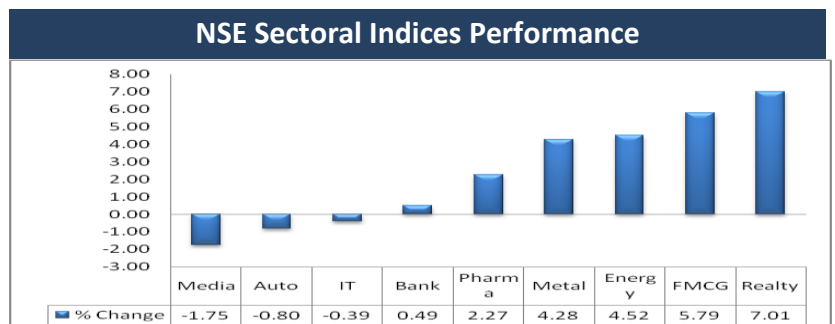
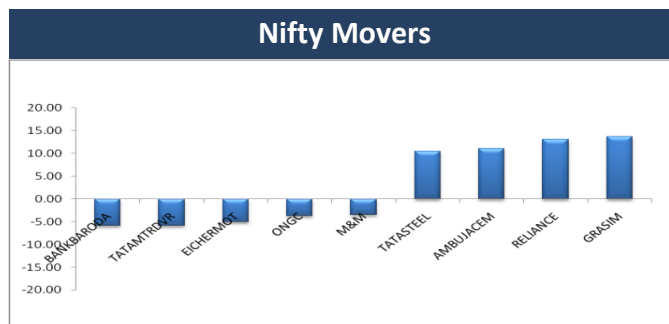
**Block Deal**

Exchange	Deal Date	Company	Client Name	Deal Type	Quantity	Price
NSE	12-Jul-17	BIRLAMONEY	BHAVIN Y MEHTA	BUY	266420	101.29
NSE	12-Jul-17	GOACARBON	ELIXIR EQUITIES PRIVATE LIMITED	BUY	62705	349.62
NSE	12-Jul-17	GOACARBON	N.K. SECURITIES	BUY	54153	348.38
NSE	12-Jul-17	GOACARBON	RAHUL DOSHI	BUY	50027	364.32
NSE	12-Jul-17	MEP	PEARL BROKING SERVICES LIMITED	BUY	1043405	132.36
NSE	12-Jul-17	PATINTLOG	NEW BERRY CAPITALS PRIVATE LIMITED	BUY	90039	93.29
NSE	12-Jul-17	RTNINFRA	UAL INDUSTRIES LIMITED	BUY	23370855	3.96
NSE	12-Jul-17	SINTEX	ADROIT FINANCIAL SERVICES PRIVATE LIMITED	BUY	3140067	28.39
NSE	12-Jul-17	SINTEX	MORGAN STANLEY (FRANCE) S.A.S.	BUY	3569625	28.95
NSE	12-Jul-17	SUNILHITEC	ARCADIA SHARE & STOCK BROKERS PRIVATE LIMITE	BUY	2381810	14.06
NSE	12-Jul-17	VETO	AMBE SECURITIES PRIVATE LIMITED	BUY	346393	201.65
NSE	12-Jul-17	VETO	KIRJAL SECUITIES PVT. LTD	BUY	114000	196.86
NSE	12-Jul-17	VSSL	ANKITA VISHAL SHAH	BUY	171543	141.13
NSE	12-Jul-17	WEIZFOREX	HANSNEEL IMPEX PVT LTD	BUY	150000	660.5
NSE	12-Jul-17	BIRLAMONEY	BHAVIN Y MEHTA	SELL	299864	100.61
NSE	12-Jul-17	GOACARBON	ELIXIR EQUITIES PRIVATE LIMITED	SELL	61906	350.25
NSE	12-Jul-17	GOACARBON	N.K. SECURITIES	SELL	54153	348.54
NSE	12-Jul-17	GOACARBON	RAHUL DOSHI	SELL	30024	366.59
NSE	12-Jul-17	MEP	PEARL BROKING SERVICES LIMITED	SELL	1088816	132.89
NSE	12-Jul-17	PATINTLOG	NEW BERRY CAPITALS PRIVATE LIMITED	SELL	39	89.24
NSE	12-Jul-17	RTNINFRA	RATNABALI CAPITAL MARKETS PRIVATE LIMITED	SELL	25000000	3.96
NSE	12-Jul-17	SINTEX	ADROIT FINANCIAL SERVICES PRIVATE LIMITED	SELL	3016796	28.5
NSE	12-Jul-17	VETO	AMBE SECURITIES PRIVATE LIMITED	SELL	346393	202.39
NSE	12-Jul-17	VETO	KIRJAL SECUITIES PVT. LTD	SELL	114000	197.34
NSE	12-Jul-17	VSSL	ANKITA VISHAL SHAH	SELL	171543	143.13
NSE	12-Jul-17	WEIZFOREX	WINDIA INFRASTRUCTURE FINANCE LTD.	SELL	150000	660.5

**F&O OPEN INTEREST ( Number of Contracts )**



**MARKET MOVERS (1 MONTH CHANGE)**



### Result Calendar Q1FY18

Bse Code	Company Name	Date	Bse Code	Company Name	Date
506597	AMAL	13-Jul-17	504080	JSLINDL	18-Jul-17
531364	AQUAPIV	13-Jul-17	530019	JUBILANT	18-Jul-17
532175	CYIENT	13-Jul-17	500266	MAHSCOOTER	18-Jul-17
509567	GOACARBON	13-Jul-17	530267	SABOBR	18-Jul-17
513343	GRANDFONRY	13-Jul-17	532663	SASKEN	18-Jul-17
531531	HATSUN	13-Jul-17	590071	SUNDARMFIN	18-Jul-17
534091	MCX	13-Jul-17	532284	TCFCFINQ	18-Jul-17
523445	RIIL	13-Jul-17	532538	ULTRACEMCO	18-Jul-17
532540	TCS	13-Jul-17	532978	BAJAJFINSV	19-Jul-17
500052	BEPL	14-Jul-17	532483	CANBK	19-Jul-17
539149	ICSL	14-Jul-17	540124	GNA	19-Jul-17
509069	INFOMEDIA	14-Jul-17	517354	HAVELLS	19-Jul-17
500209	INFY	14-Jul-17	532400	KPIT	19-Jul-17
532303	INTEGHIT	14-Jul-17	523704	MASTEK	19-Jul-17
539910	KOCL	14-Jul-17	532819	MINDTREE	19-Jul-17
531212	NALINLEA	14-Jul-17	500674	SANOFI	19-Jul-17
531358	CHOICEIN	15-Jul-17	532782	SUTLEJTEX	19-Jul-17
532772	DCBBANK	15-Jul-17	500002	ABB	20-Jul-17
511288	GRUH	15-Jul-17	512091	ANSHNCO	20-Jul-17
532652	KTKBANK	15-Jul-17	533573	APLLTD	20-Jul-17
515081	SRIVAJRA	15-Jul-17	532977	BAJAJ-AUTO	20-Jul-17
534741	VIRTUALG	15-Jul-17	500490	BAJAJHLDNG	20-Jul-17
532016	WELLESLEY	15-Jul-17	500033	FORCEMOT	20-Jul-17
500410	ACC	17-Jul-17	500188	HINDZINC	20-Jul-17
507525	AMRITCORP	17-Jul-17	500165	KANSAINER	20-Jul-17
530721	ANGIND	17-Jul-17	500247	KOTAKBANK	20-Jul-17
531595	CGCL	17-Jul-17	532756	MAHINDCIE	20-Jul-17
513353	COCHINM	17-Jul-17	523828	MENONBE	20-Jul-17
531155	EPSOMPRO	17-Jul-17	532541	NIITTECH	20-Jul-17
533217	HMVL	17-Jul-17	531209	NUCLEUS	20-Jul-17
531840	IECEDU	17-Jul-17	500355	RALLIS	20-Jul-17
533047	IMFA	17-Jul-17	540065	RBLBANK	20-Jul-17
533155	JUBLFOOD	17-Jul-17	517447	RSSOFTWARE	20-Jul-17
523457	LINDEINDIA	17-Jul-17	507685	WIPRO	20-Jul-17
506022	PRAKASH	17-Jul-17	500477	ASHOKLEY	21-Jul-17
540181	SALEM	17-Jul-17	500027	ATUL	21-Jul-17
535602	SHARDA	17-Jul-17	511196	CANFINHOME	21-Jul-17
502180	SHREDIGCEM	17-Jul-17	501833	CHOWGULSTM	21-Jul-17
521194	SILINV	17-Jul-17	511072	DHFL	21-Jul-17
512153	SPECMKT	17-Jul-17	500089	DICIND	21-Jul-17
522134	ARTSONEN	18-Jul-17	506528	KELENRG	21-Jul-17
523229	BHARATSE	18-Jul-17	500262	MAFATLAFIN	21-Jul-17
500092	CRISIL	18-Jul-17	517536	ONWARDTEC	21-Jul-17
509675	HIL	18-Jul-17	533179	PERSISTENT	21-Jul-17
532662	HTMEDIA	18-Jul-17	513010	TATASPONGE	21-Jul-17
520066	JAYBARMARU	18-Jul-17	504966	TINPLATE	21-Jul-17

532628	3IINFOTECH	22-Jul-17	535755	ABFRL	27-Jul-17
513729	AROGRANITE	22-Jul-17	532523	BIOCON	27-Jul-17
531727	MENNPIS	22-Jul-17	511243	CHOLAFIN	27-Jul-17
500412	TIRUMALCHM	22-Jul-17	500147	CMIFPE	27-Jul-17
500425	AMBUJACEM	24-Jul-17	539876	CROMPTON	27-Jul-17
532511	EXCELCROP	24-Jul-17	500124	DRREDDY	27-Jul-17
511676	GICHSGFIN	24-Jul-17	509525	EMPIND	27-Jul-17
500180	HDFCBANK	24-Jul-17	500086	EXIDEIND	27-Jul-17
534816	INFRATEL	24-Jul-17	532174	ICICIBANK	27-Jul-17
523405	JMFINANCIL	24-Jul-17	532659	IDFC	27-Jul-17
532925	KAUSHALYA	24-Jul-17	539437	IDFCBANK	27-Jul-17
532720	M&MFIN	24-Jul-17	523638	IPRINGLTD	27-Jul-17
532777	NAUKRI	24-Jul-17	500241	KIRLOSBROS	27-Jul-17
504112	NELCO	24-Jul-17	532500	MARUTI	27-Jul-17
519230	RICHIRICH	24-Jul-17	500730	NOCIL	27-Jul-17
505400	TEXINFRA	24-Jul-17	532944	ONMOBILE	27-Jul-17
533326	TEXRAIL	24-Jul-17	502090	SAGCEM	27-Jul-17
524129	VINYLINDIA	24-Jul-17	524542	SUKHIJTS	27-Jul-17
524661	WELCURE	24-Jul-17	531003	SWRNASE	27-Jul-17
505412	WENDT	24-Jul-17	539268	SYNGENE	27-Jul-17
505537	ZEEL	24-Jul-17	533023	WABCOINDIA	27-Jul-17
500820	ASIANPAINT	25-Jul-17	505216	ALFREDHE	28-Jul-17
532215	AXISBANK	25-Jul-17	520119	ASAL	28-Jul-17
524663	BIBCL	25-Jul-17	500280	CENTENKA	28-Jul-17
500660	GLAXO	25-Jul-17	506395	COROMANDEL	28-Jul-17
500182	HEROMOTOCO	25-Jul-17	522074	ELGIEQUIP	28-Jul-17
500500	HINDMOTORS	25-Jul-17	523754	EPCIN	28-Jul-17
530055	HRMNYCP	25-Jul-17	531600	GOGIACAP	28-Jul-17
540133	ICICIPRULI	25-Jul-17	532150	INDRAMEDCO	28-Jul-17
502330	IPAPPM	25-Jul-17	523248	MACPLASQ	28-Jul-17
532313	MAHLIFE	25-Jul-17	530243	MANGASOF	28-Jul-17
532504	NAVINFLUOR	25-Jul-17	509760	MODRNSH	28-Jul-17
500314	ORIENTHOT	25-Jul-17	511702	PARSHINV	28-Jul-17
500331	PIDILITIND	25-Jul-17	532638	SHOPERSTOP	28-Jul-17
513517	STEELCAS	25-Jul-17	501110	SUNRINV	28-Jul-17
513434	TATAMETALI	25-Jul-17	534742	ZUARI	28-Jul-17
500215	ATFL	26-Jul-17	531210	COLINZ	29-Jul-17
533228	BHARATFIN	26-Jul-17	500171	GHCL*	29-Jul-17
532974	BIRLAMONEY	26-Jul-17	531221	MAYURFL	29-Jul-17
508906	EVERESTIND	26-Jul-17	500452	NEPCAGRO	29-Jul-17
506076	GRINDWELL	26-Jul-17	500301	NEPCMICON	29-Jul-17
500010	HDFC	26-Jul-17	531077	NEPCPAPER	29-Jul-17
531319	MARUTISE	26-Jul-17	521192	NEPCTEX	29-Jul-17
526299	MPHASIS	26-Jul-17	502450	SESHAPAPER	29-Jul-17
511766	MUTHTFN	26-Jul-17	516038	SOMAPPR	29-Jul-17
500790	NESTLEIND	26-Jul-17	500049	BEL	31-Jul-17
503811	SIYSIL	26-Jul-17	513375	CARBORUNIV	31-Jul-17
533158	THANGAMAYL	26-Jul-17	530389	GEEFC	31-Jul-17
532648	YESBANK	26-Jul-17	532424	GODREJCP	31-Jul-17

532041	HINDBIO	31-Jul-17	512527	SUPER	04-Aug-17
538838	ICL	31-Jul-17	507747	TTKHEALTH	04-Aug-17
511208	IVC	31-Jul-17	504648	BOMBWIR	07-Aug-17
530915	JRFOODS	31-Jul-17	539524	LALPATHLAB	07-Aug-17
530441	MAHAN	31-Jul-17	500670	GNFC	04-Aug-17
500387	SHREECEM	31-Jul-17	524084	MONSANTO	04-Aug-17
513488	SSWRL	31-Jul-17	590072	SUNDRMBRAK	04-Aug-17
500403	SUNDRMFAST	31-Jul-17	512527	SUPER	04-Aug-17
500251	TRENT	31-Jul-17	507747	TTKHEALTH	04-Aug-17
524038	VENLONENT	31-Jul-17	504648	BOMBWIR	07-Aug-17
532953	VGUARD	31-Jul-17	539524	LALPATHLAB	07-Aug-17
512587	ZODJRDMKJ	31-Jul-17	500252	LAXMIMACH	07-Aug-17
500840	EIHOTEL	01-Aug-17	532254	POLARIS	07-Aug-17
502420	ORIENTPPR	01-Aug-17	500085	CHAMBLFERT	08-Aug-17
533393	TCIDEVELOP	01-Aug-17	532809	FSL	08-Aug-17
540212	TCIEXP	01-Aug-17	500676	GSKCONS	08-Aug-17
532755	TECHM	01-Aug-17	532865	MEGH	08-Aug-17
523708	EIMCOELECO	02-Aug-17	508941	PANCARBON	08-Aug-17
531162	EMAMILTD	02-Aug-17	500338	PRISMCEM	08-Aug-17
504258	LAKSELEC	02-Aug-17	520056	SUNCLAYLTD	08-Aug-17
524000	MAGMA	02-Aug-17	533170	TAMBOLI	08-Aug-17
532460	PONNIERODE	02-Aug-17	500144	FINCABLES	09-Aug-17
532349	TCI	02-Aug-17	500307	NIRLON	09-Aug-17
500830	COLPAL	03-Aug-17	531306	DHPIND	10-Aug-17
500133	ESABINDIA	03-Aug-17	526901	SONALAD	11-Aug-17
500260	RAMCOCEM*	03-Aug-17	532343	TVSMOTOR	11-Aug-17
532369	RAMCOIND	03-Aug-17	509162	INDAG	14-Aug-17
500114	TITAN	03-Aug-17	521226	UNIROYAL	14-Aug-17
509480	BERGEPAIN	04-Aug-17	532988	RANEENGINE	21-Aug-17
500096	DABUR	04-Aug-17	532987	RBL	23-Aug-17
523127	EIHAHOTELS	04-Aug-17	532661	RML	24-Aug-17
500670	GNFC	04-Aug-17	505800	RANEHOLDIN	31-Aug-17
524084	MONSANTO	04-Aug-17	500414	TIMEX	11-Sep-17
590072	SUNDRMBRAK	04-Aug-17			

### Result Q1FY18

Bse Code	NSE code	Sales	sales Growth	PAT	PAT Growth
533229	BAJAJCORP	204.00	(3.40)	52.00	5.30

### Earning Estimate Q1FY18

Bse Code	NSE code	Sales	sales Growth	PAT	PAT Growth
13-Jul-17	CYIENT	942.70	12.90	95.50	29.10
13-Jul-17	TCS	29712.70	1.40	6200.10	(1.90)
13-Jul-17	MCX	55.70	(4.40)	29.70	(9.40)
14-Jul-17	INFY	17047.30	1.60	3438.50	0.10
15-Jul-17	DCB	231.80	31.00	59.50	26.60
15-Jul-17	GRUH	156.70	28.20	77.80	29.40

Economic Calendar					
Country	Monday 10th July 17	Tuesday 11th July 17	Wednesday 12th July 17	Thursday 13th July 17	Friday 14th July 17
<b>US</b>	JOLTS Job Openings , Labor Market Conditions Index m/m, Consumer Credit m/m, BRC Retail Sales Monitor y/y, RICS House Price Balance.	Final Wholesale Inventories m/m, NFIB Small Business Index, Federal Budget Balance, TIC Long-Term Purchases.	Crude Oil Inventories , 10-y Bond Auction, Beige Book.	PPI m/m , Unemployment Claims, Core PPI m/m, Natural Gas Storage, 30-y Bond Auction.	CPI m/m , Core CPI m/m, Core Retail Sales m/m, Retail Sales m/m, Capacity Utilization Rate, Industrial Production m/m, Prelim UoM Consumer Sentiment Business Inventories m/m, Prelim UoM Inflation Expectations.
<b>UK/EURO ZONE</b>	German Final CPI m/m, German Trade Balance, French Industrial Production m/m, Italian Industrial Production m/m,	CB Leading Index m/m.	French Final CPI m/m, Average Earnings Index 3m/y, Claimant Count Change, Unemployment Rate, Industrial Production m/m, German 10-y Bond Auction	Italian Trade Balance , BOE Credit Conditions Survey	Trade Balance , Manufacturing Sales m/m.
<b>INDIA</b>			IIP Data		WPI Data

# Narnolia

Advance Strategy - Simple Solutions

## Narnolia Securities Ltd

201 | 2nd Floor | Marble Arch Building | 236B-AJC Bose  
Road | Kolkata-700 020 , Ph : 033-40501500

email: [narnolia@narnolia.com](mailto:narnolia@narnolia.com),  
website : [www.narnolia.com](http://www.narnolia.com)

**Risk Disclosure & Disclaimer:** This report/message is for the personal information of the authorized recipient and does not construe to be any investment, legal or taxation advice to you. Narnolia Securities Ltd. (Hereinafter referred as NSL) is not soliciting any action based upon it. This report/message is not for public distribution and has been furnished to you solely for your information and should not be reproduced or redistributed to any other person in any form. The report/message is based upon publicly available information, findings of our research wing "East wind" & information that we consider reliable, but we do not represent that it is accurate or complete and we do not provide any express or implied warranty of any kind, and also these are subject to change without notice. The recipients of this report should rely on their own investigations, should use their own judgment for taking any investment decisions keeping in mind that past performance is not necessarily a guide to future performance & that the the value of any investment or income are subject to market and other risks. Further it will be safe to assume that NSL and /or its Group or associate Companies, their Directors, affiliates and/or employees may have interests/ positions, financial or otherwise, individually or otherwise in the recommended/mentioned securities/mutual funds/ model funds and other investment products which may be added or disposed including & other mentioned in this report/message.