

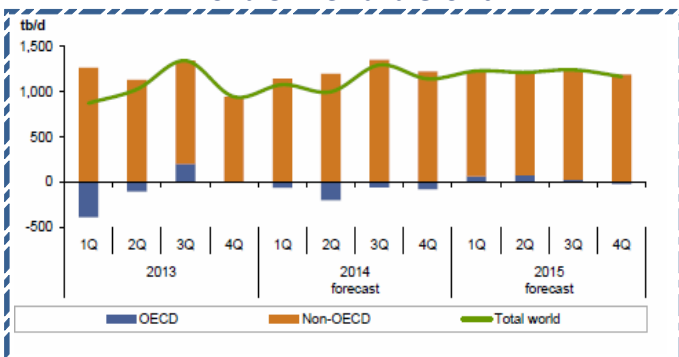
Quote of the Day

"You do things when the opportunities come along. I've had periods in my life when I've had a bundle of ideas come along, and I've had long dry spells. If I get an idea next week, I'll do something. If not, I won't do a damn thing." **Warren Buffett**

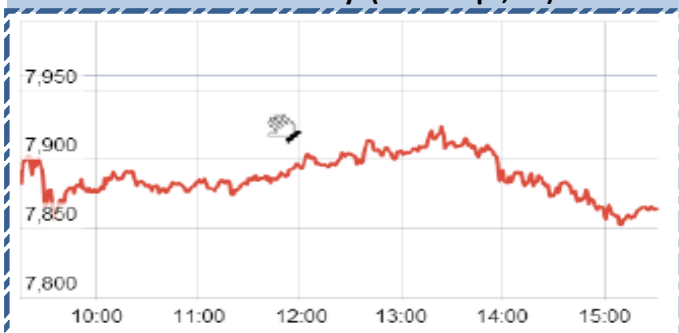
SGX NIFTY : 7828
(48 pts Down)

Chart of the Day

World Oil Demand Growth



Index Action-Nifty (10th Sept, 14)



Index

Contents	Page	Coverage
Derivative Research	2	UPDATE
News	3	UPDATE
Result Calendar Q2FY15	4 to 6	UPDATE
Result Q2FY15	6	UPDATE
Economic calendar	7	UPDATE

MARKET

Name	Value	Change
Sensex	26297.38	(339.90)
Nifty	7859.95	(100.60)
DOW	16544.1	(115.15)
NASDAQ	4276.24	(102.10)
CAC	4073.41	(67.74)
DAX	8788.81	(216.21)
FTSE	6339.97	(91.88)
NIKKIE	Closed	
HANG SENG	22953.34	(135.20)
EW ALL SHARE	13224.07	(8.76)

INSTITUTIONAL TURNOVER

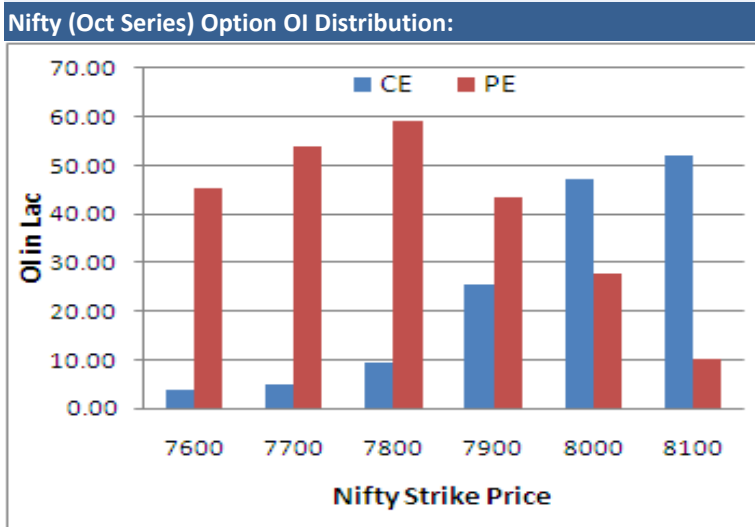
FII			
Investor	Buy(Cr.)	Sale(Cr.)	Net(Cr.)
10th Oct	2576.53	3,296.30	(719.77)
Oct,14	17569.29	20,147.02	(2577.73)
2014	760589.79	7,01,556.38	59033.41
DII			
Investor	Buy(Cr.)	Sale(Cr.)	Net(Cr.)
10th Oct	1866.91	1,308.70	558.21
Oct,14	9057.09	6,728.81	2328.28
2014	272895.70	3,01,731.38	(28835.68)

COMMODITY PRICE

COMMODITY/CURRENCIES	Value	
GOLD	26964.00	↑
SILVER	38512.00	↓
CRUDEOIL	5284.00	↑
COPPER	414.40	↑
NATURALGAS	236.00	↑
DOLLAR/RS.	61.35	↑
EURO/RS.	77.36	↓
POUND/RS.	98.49	↑

Narnolia Securities Ltd.

NIFTY SNAPSHOT	
Nifty Spot	7859.95(-100.60)
Nifty Oct 2014 Future	7982
Nifty Nov 2014 Future	7938
Nifty Oct 2014 Open Interest	15434050
Nifty Nov 2014 Open Interest	852050
7 DMA of Spot Nifty	7912
21 DMA of Spot Nifty	8002
50 DMA of Spot Nifty	7913
VOLATILITY INDEX (VIX)	14.33(+1.18)
PUT CALL RATIO	1.1



Activity of Nifty (Oct Series) Strike				
Strike	CALL		PUT	
	OI	% Chng	OI	% Chng
7600	366100	-11.7	4512250	17.2
7700	499950	-3.6	5408900	16.0
7800	946750	15.6	5927750	1.5
7900	2533750	32.1	4325650	-10.9
8000	4730250	16.8	2771850	-8.9
8100	5185050	0.3	1011650	-5.6

FIIs Activity (Fig in Cr)			
Segment	Buy	Sell	Net
INDEX FUTURE	1,258	2,722	(1,464)
INDEX OPTION	18,971	16,748	2,222
STOCK FUTURE	2,383	2,560	(176)
STOCK OPTION	3,876	3,889	(13)
TOTAL	26,488	25,919	569

Fresh Long Seen In (Rising OI -Rising Price)				
Scrip	OI	OI ch%	CMP	Ch%
INFY	43,54,125	7.2	3889.0	6.7
BHEL	352,02,000	5.8	220.9	0.9
TECHM	28,15,625	3.7	2338.7	0.1
GMRINFRA	2275,90,000	1.3	21.9	3.8
CIPLA	59,02,000	0.4	592.2	0.1

Fresh Shorts Seen In: (Rising OI -Falling Price)				
Scrip	OI	OI ch%	CMP	Ch%
ORIENTBANK	68,80,000	18.8	224.0	-4.6
SUNTV	18,62,000	8.8	333.1	-2.0
BHARATFORG	50,46,000	8.4	762.2	-5.4
SYNDIBANK	119,72,000	7.6	112.2	-1.8
SRTRANSFIN	10,17,000	6.9	874.1	-3.2

PCR (OI)			
STOCK	T1	T2	
INFY	0.84	0.53	
ASIANPAINT	0.51	0.37	
TATAGLOBAL	0.31	0.24	
ABIRLANUVO	0.45	0.38	
HCLTECH	0.42	0.37	

PCR (OI)			
STOCK	T1	T2	
JSWSTEEL	0.51	0.77	
M&M	0.35	0.51	
FEDERALBNK	0.33	0.47	
ITC	0.27	0.38	
HINDALCO	0.61	0.83	

Markets Snapshot

Top Price Performers

Top Performers 1D	% Change	Top Performers 1W	% Change	Top Performers 1M	% Change
NDTV	15.96	NDTV	50.14	DUNLOP	132.96
TIPSINDLTD	14.41	TIPSINDLTD	49.94	AJMERA	127.60
TDPOWERSYS	12.43	SURAJLTD	47.29	GREENFIRE	81.08
SMARTLINK	10.55	IFBAGRO	39.06	RAIREKMOH	74.31
GRAVISSHO	9.80	SANDESH	28.59	MUTHTFN	61.28

Worst Price Performers

Worst Performers 1D	% Change	Worst Performers 1W	% Change	Worst Performers 1M	% Change
INDINFO	(18.92)	MAVENS BIO	(26.44)	RASOYPR	(59.89)
GANDHITUBE	(15.44)	RASOYPR	(26.36)	CREWBOS	(49.42)
BINNY	(9.93)	RAMKASH	(23.96)	CMAHENDRA	(49.27)
VIKASGLOB	(9.89)	INDINFO	(22.58)	INDINFO	(48.50)
ISIBARS	(9.43)	CMAHENDRA	(22.33)	SARDAEN	(48.07)

Top News :

- **JSW Steel** is very close to finalising a deal to acquire London Mining which is battling big debts amid crashing iron-ore prices and the Ebola outbreak in Africa, where it operates a mine . The announcement of acquisition may be made on October 21 along with the financial results .

- **Mahindra & Mahindra** would be observing No Production Days at the Company's Tractor Plants located at Rudrapur and Jaipur for four days during the balance period of October, 2014 .

- **Amtek Auto Mgt Guideline** : Company is confident of maintaining FY15 sales of Rs 16000 crore and consolidated EBITDA margins in excess of 20 percent. The capacity utilisation for the company currently stands at 57 percent, which is likely to go up to 58-59% for the year .

- **The Delhi High Court** gives green signal to Competition Commission of India (CCI) to investigate and pass final orders against DLF (Delhi HC pulls up DLF and observes that the plea was a delaying tactic to pay fine of Rs 630 crore, slapped by CCI, in Belair Project in Gurgaon .)

- **Aban Offshore** has received orders of approximately Rs 1114cr from ONGC for the deployment of jack-up rig Aban IV and Aban III for a period of 3 years. The order is 125 % of sales .

- **Fund Action** : Dinero Wealth sells 1.04 lakh shares of Astec Lifesciences . Balashri Commercial bought 500,000 shares of IndiaNivesh at Rs 42.45 per share on the BSE. Sundaram Mutual Fund bought 228,683 shares of PVR at Rs 603 per share on the BSE. HDFC Mutual Fund bought 175,000 shares of Shemaroo Entertainment at Rs 152.25 per share on the NSE.

- **Fitch** has revised the outlook on Tata Motors ' British arm Jaguar Land Rover (JLR) to positive from stable apart from affirming the long-term foreign currency issuer default ratings and senior unsecured debt rating at 'BB-'.

- **India Ratings & Research Private Limited**, a Fitch Group have affirmed the Long-Term Issuer Rating of 'IND AAA' to the Cipla and 'IND A1+' rating to the Cipla's Rs. 10 billion Commercial Paper/Short Term Debt Programme. Further, India Ratings & Research Private Limited has assigned 'IND AAA' rating to the Cipla's proposed Rs. 20 billion NCD programme .

- **Index of Industrial Production (IIP)**, remained unchanged at 0.4 percent against 0.5 percent . Manufacturing sector growth stood at -1.4 percent against -1 percent, while the capital goods growth shrunk further to -11.3 percent against -3.8 percent on a month-on-month basis. Consumer goods growth stood at -6.9 percent against -7.4 percent (MoM).

- **The U.S. import price index** fell to a seasonally adjusted -0.5%, from -0.6% in the preceding month whose figure was revised up from -0.9%. Analysts had expected U.S. import price index to fall -0.7% last month.

- **U.K. trade balance** rose to a seasonally adjusted -9.10B, from -10.41B in the preceding month whose figure was revised down from -10.19B. Analysts had expected U.K. trade balance to rise to -9.60B last month.

- **Canadian employment change** rose to a seasonally adjusted 74.1K, from -11.0K in the preceding month. Analysts had expected Canadian employment change to rise 20.0K last month.

Result Calendar Q2FY15

BSE Code	Company Name	Date	BSE Code	Company Name	Date
521220	DAMOINDUS-\$	13-Oct-14	500027	ATUL	17-Oct-14
535431	GCMSECU	13-Oct-14	532215	AXISBANK	17-Oct-14
532187	INDUSINDBK	13-Oct-14	534109	BCBFL	17-Oct-14
520066	JAYBARMARU	13-Oct-14	511505	CAPITALT	17-Oct-14
526596	LIBERTSHOE	13-Oct-14	500092	CRISIL	17-Oct-14
500266	MAHSCOOTER	13-Oct-14	530393	DBSTOCKBRO	17-Oct-14
500325	RELIANCE	13-Oct-14	532922	EDELWEISS	17-Oct-14
502742	SINTEX	13-Oct-14	504008	EMCO-\$	17-Oct-14
517506	TTKPRESTIG	13-Oct-14	500246	ENVAIREL	17-Oct-14
532977	BAJAJ-AUTO	14-Oct-14	508906	EVERESTIND	17-Oct-14
532978	BAJAJFINSV	14-Oct-14	509567	GOACARBON-\$	17-Oct-14
500034	BAJFINANCE	14-Oct-14	532281	HCLTECH	17-Oct-14
526612	BLUEDART	14-Oct-14	509675	HIL	17-Oct-14
532913	CSIL	14-Oct-14	532662	HTMEDIA	17-Oct-14
511128	GALAXCP	14-Oct-14	502330	IPAPPM	17-Oct-14
534060	PMCFIN	14-Oct-14	533293	KIRLOSENG	17-Oct-14
523363	STERLINH	14-Oct-14	532732	KKCL	17-Oct-14
517385	SYMPHONY	14-Oct-14	523207	KOKUYOCLN	17-Oct-14
500490	BAJAJHLDNG	15-Oct-14	534690	LAKSHVILAS	17-Oct-14
532175	CYIENT	15-Oct-14	532313	MAHLIFE	17-Oct-14
511288	GRUH	15-Oct-14	517536	ONWARDTEC	17-Oct-14
500690	GSFC	15-Oct-14	533179	PERSISTENT	17-Oct-14
533217	HMVL	15-Oct-14	500338	PRISMCEM	17-Oct-14
521248	KITEX	15-Oct-14	517447	RSOFTWARE	17-Oct-14
532819	MINDTREE	15-Oct-14	502090	SAGCEM	17-Oct-14
532541	NIITTECH	15-Oct-14	509930	SUPREMEIND	17-Oct-14
520075	SAMKRG-\$	15-Oct-14	532790	TANLA	17-Oct-14
513010	TATASPONGE	15-Oct-14	504273	TUMUSEL	17-Oct-14
533229	BAJAJCORP	16-Oct-14	531950	VERTEX	17-Oct-14
532330	BIOPAC-\$	16-Oct-14	512345	YASTF	17-Oct-14
501833	CHOWGULSTM	16-Oct-14	505537	ZEEL	17-Oct-14
517326	CMC	16-Oct-14	533029	ALKALI	18-Oct-14
500093	CROMPGREAV	16-Oct-14	533138	ASTEC	18-Oct-14
533151	DBCORP	16-Oct-14	522005	AUSTENG	18-Oct-14
532848	DELTACORP	16-Oct-14	514358	EVERLON	18-Oct-14
500469	FEDERALBNK	16-Oct-14	500033	FORCEMOT	18-Oct-14
507488	GMBREW	16-Oct-14	532285	GEOJITBNPP	18-Oct-14
500182	HEROMOTOCO	16-Oct-14	500171	GHCL	18-Oct-14
533297	KBIL	16-Oct-14	524669	HESTERBIO	18-Oct-14
500243	KIRLOSIND	16-Oct-14	532924	KOLTEPATIL	18-Oct-14
523828	MENONBE-\$	16-Oct-14	500253	LICHSGFIN	18-Oct-14
531065	OSWALOR	16-Oct-14	533273	OBEROIRLTY	18-Oct-14
522205	PRAJIND	16-Oct-14	504398	SJCORP	18-Oct-14
500355	RALLIS	16-Oct-14	530445	SUMERUIND	18-Oct-14
507894	SCHABLON	16-Oct-14	505978	TRITONV	18-Oct-14
531548	SOMANYCERA	16-Oct-14	532538	ULTRACEMCO	18-Oct-14
500405	SUPPETRO	16-Oct-14	506690	UNICHEMLAB	18-Oct-14
532540	TCS	16-Oct-14	533573	APLLTD	20-Oct-14
522134	ARTSONEN	17-Oct-14	520119	ASAL	20-Oct-14
500215	ATFL	17-Oct-14	519105	AVTNPL	20-Oct-14

533309	DALMIABHA	20-Oct-14	532720	M&MFIN	22-Oct-14
522261	DOLPHINOFF-\$	20-Oct-14	513434	TATAMETALI	22-Oct-14
500086	EXIDEIND	20-Oct-14	504966	TINPLATE	22-Oct-14
500179	HCL-INSYS	20-Oct-14	507685	WIPRO	22-Oct-14
500188	HINDZINC	20-Oct-14	590053	KARMOB-\$	24-Oct-14
530055	HRMNYCP	20-Oct-14	532988	RANEENGINE	24-Oct-14
504786	INVPRECQ	20-Oct-14	531533	ECOM	25-Oct-14
532189	ITDC	20-Oct-14	531169	SKPSEC	25-Oct-14
535648	JUSTDIAL	20-Oct-14	505412	WENDT	25-Oct-14
500245	KIRLFER	20-Oct-14	500233	KAJARIACER	27-Oct-14
504823	MAHINDUGIN	20-Oct-14	500252	LAXMIMACH	27-Oct-14
522241	MMFL-\$	20-Oct-14	531319	MARUTISE	27-Oct-14
532504	NAVINFLUOR	20-Oct-14	517320	SAVINFOCO	27-Oct-14
502165	OCL	20-Oct-14	521234	SRINACHA-\$	27-Oct-14
532983	RPGLIFE	20-Oct-14	500002	ABB	28-Oct-14
532663	SASKEN	20-Oct-14	523411	ADCINDIA	28-Oct-14
533228	SKSMICRO	20-Oct-14	506767	ALKYLAMINE	28-Oct-14
511218	SRTRANSFIN	20-Oct-14	523754	EPCIN	28-Oct-14
500407	SWARAJENG	20-Oct-14	531600	GOGIACAP	28-Oct-14
504961	TATAYODOGA-\$	20-Oct-14	531807	INGVYSYABK	28-Oct-14
523856	TORRCABS	20-Oct-14	524103	LINEARPO	28-Oct-14
532432	UNITDSPR	20-Oct-14	500790	NESTLEIND	28-Oct-14
533023	WABCOINDIA	20-Oct-14	500314	ORIENTHOT	28-Oct-14
512297	WHELTEX	20-Oct-14	500359	RANBAXY	28-Oct-14
532794	ZEEMEDIA	20-Oct-14	500124	DRREDDY	29-Oct-14
531581	ALKADIA	21-Oct-14	531162	EMAMILTD	29-Oct-14
523229	BHARATSE-\$	21-Oct-14	500300	GRASIM	29-Oct-14
532523	BIOCON	21-Oct-14	533047	IMFA	29-Oct-14
500067	BLUESTARCO	21-Oct-14	504258	LAKSELEC	29-Oct-14
532792	CAIRN	21-Oct-14	526299	MPHASIS	29-Oct-14
511072	DHFL	21-Oct-14	500452	NEPCAGRO	29-Oct-14
500670	GNFC	21-Oct-14	500301	NEPCMICON	29-Oct-14
530001	GUJALKALI	21-Oct-14	531077	NEPCPAPER	29-Oct-14
500180	HDFCBANK	21-Oct-14	521192	NEPCTEX	29-Oct-14
500228	JSWSTEEL	21-Oct-14	504093	PANAENERG-\$	29-Oct-14
532400	KPIT	21-Oct-14	500408	TATAELXSI	29-Oct-14
524138	MAHINCOMP-\$	21-Oct-14	534742	ZUARI	29-Oct-14
532756	MAHINDCIE	21-Oct-14	500780	ZUARIGLOB	29-Oct-14
500458	PHILCORP	21-Oct-14	500425	AMBUJACEM	30-Oct-14
500472	SKFINDIA	21-Oct-14	524723	BIJHANS	30-Oct-14
532218	SOUTHBANK	21-Oct-14	511243	CHOLAFIN	30-Oct-14
531359	SRAMSET	21-Oct-14	532927	ECLERX	30-Oct-14
512070	UPL	21-Oct-14	532482	GRANULES	30-Oct-14
533287	ZEELEARN	21-Oct-14	532174	ICICIBANK	30-Oct-14
500820	ASIANPAINT	22-Oct-14	532659	IDFC	30-Oct-14
500059	BINANIIND	22-Oct-14	533088	MHRIL	30-Oct-14
506076	GRINDWELL	22-Oct-14	531049	NEELKAN	30-Oct-14
500010	HDFC	22-Oct-14	533098	NHPC	30-Oct-14
500165	KANSAINER	22-Oct-14	500313	OILCOUNTUB	30-Oct-14
500247	KOTAKBANK	22-Oct-14	532509	SUPRAJIT	30-Oct-14
500249	KSBPUMPS	22-Oct-14	532390	TAJGVK	30-Oct-14
533519	L&T;TFH	22-Oct-14	532888	ASIANTILES	31-Oct-14

500040	CENTURYTEX	31-Oct-14	523736	DPTL	05-Nov-14
523592	JENSONICOL	31-Oct-14	511208	IVC	05-Nov-14
523323	KOVAI	31-Oct-14	500133	ESABINDIA	06-Nov-14
500520	M&M	31-Oct-14	500660	GLAXO	06-Nov-14
530243	MANGASOF	31-Oct-14	533007	LGBFORGE	06-Nov-14
526891	MKTCREAT	31-Oct-14	500260	RAMCOCEM	06-Nov-14
532460	PONNIERODE	31-Oct-14	500085	CHAMBLFERT	07-Nov-14
524667	SOTL	31-Oct-14	532915	RELIGARE	07-Nov-14
532349	TCI	31-Oct-14	508963	STRLGUA	07-Nov-14
533393	TCIDEVELOP	31-Oct-14	538268	WONDERLA	07-Nov-14
524038	VENLONENT	31-Oct-14	532133	IFGLREFRAC	08-Nov-14
532424	GODREJCP	01-Nov-14	519359	POONADAL	08-Nov-14
502450	SESHAPAPER	01-Nov-14	500387	SHREECEM	10-Nov-14
500096	DABUR	03-Nov-14	522113	TIMKEN	10-Nov-14
509480	BERGEPAIN	04-Nov-14	504840	KAIRA	11-Nov-14
512237	JAICORPLTD	04-Nov-14	523236	SHRENUJ	12-Nov-14
500331	PIDILITIND	04-Nov-14	526775	VALIANT-\$	12-Nov-14
534369	TBZ	04-Nov-14	500202	INDLEASE	13-Nov-14
500411	THERMAX	04-Nov-14	501343	MOTOGENFIN	13-Nov-14
500043	BATAINDIA	05-Nov-14	500414	TIMEX-\$	13-Nov-14

Consensus Estimate Q2 FY15

BSE Code	NSE Code	Sales (Cr .)	Sales Growth (YoY)	PAT (Cr .)	PAT Growth (YoY)
532215	AXISBANK	3323.9	13.20	1600.5	17.50
500469	FEDERALBNK	587.7	7.20	212.1	(6.10)
532187	INDUSINDBK	842.8	20.40	431.4	30.60
532538	ULTRACEMCO	5187.8	15.20	316	19.60
500093	CROMPGREAV	3410.4	6.40	61.6	5.40
500325	RELIANCE	98839.5	(4.70)	5646.7	2.90
533151	DBCORP	478.8	9.30	62	3.00
532662	HTMEDIA	556.7	4.10	37	78.30
505537	ZEEL	1178.2	7.00	244.3	3.40
502742	SINTEX	1593.4	16.70	87.3	7.40
517385	SYMPHONY	90.1	25.00	18.1	34.10
532313	MAHLIFE	207.4	5.70	26.1	34.10
533273	OBEROIRLTY	185.3	(1.90)	65.2	1.70
532281	HCLTECH	8799.6	10.50	1714.6	21.10
532819	MINDTREE	892.2	15.90	131.2	2.00
533179	PERSISTENT	464.9	7.50	67.1	10.40
532540	TCS	24094	14.90	5616.8	20.80

Result Q2 FY15

BSE Code	NSE Code	Sales (Cr .)	Sales Growth (YoY)	PAT (Cr .)	PAT Growth (YoY)
532443	CERA	208	31.00	15.75	48.30
512161	8KMILES	2708	199.60	4.14	666.70
522163	DIAPOWER	89557	34.50	40.31	29.00
522163	INFY	13342	2.90	3096	28.60
522163	RIIL	23.79	14.90	5.47	(8.02)
522163	NETWORK18	744	11.21	(36.44)	7.10
522163	TV18BRDCST	553.77	14.61	43.22	327.46

Economic Calendar

	Monday 13-Oct-14	Tuesday 14-Oct-14	Wednesday 15-Oct-14	Thursday 16-Oct-14	Friday 17-Oct-14
US		NFIB Small Business Index , Federal Budget Balance .	Core Retail Sales m/m , PPI m/m , Retail Sales m/m ,Core PPI m/m , Empire State Manufacturing Index , Business Inventories m/m ,	FOMC Member Plosser Speaks , Unemployment Claims , Capacity Utilization Rate , Industrial Production m/m , Philly Fed Manufacturing Index , FOMC Member Kocherlakota Speaks , NAHB Housing Market Index , Crude Oil Inventories .	Building Permits , Fed Chair Yellen Speaks , Housing Starts , Prelim UoM Consumer Sentiment .
UK/EURO ZONE	Average Earnings Index 3m/y , Sentix Investor Confidence , Italian Trade Balance , Average Earnings Index 3m/y , Claimant Count Change , Unemployment Rate .	CPI y/y , PPI Input m/m , RPI y/y , Core CPI y/y , HPI y/y , PPI Output m/m , German ZEW Economic Sentiment , ZEW Economic Sentiment , Industrial Production m/m.	ECB President Draghi Speaks , Average Earnings Index 3m/y , Claimant Count Change , Unemployment Rate , ECB President Draghi Speaks	Final CPI y/y , German Buba President Weidmann Speaks , Final Core CPI y/y .	Final GDP q/q .
INDIA	CPI Data.	WPI Data .			



Narnolia Securities Ltd

124, 1st floor 7/ 1, Lords Sinha Road Kolkata 700071, Ph 033-22821251 Toll Free no : 1-800-345-4000

email: research@narnolia.com,

website : www.narnolia.com

Risk Disclosure & Disclaimer: This report/message is for the personal information of the authorized recipient and does not construe to be any investment, legal or taxation advice to you. Narnolia Securities Ltd. (Hereinafter referred as NSL) is not soliciting any action based upon it. This report/message is not for public distribution and has been furnished to you solely for your information and should not be reproduced or redistributed to any other person in any form. The report/message is based upon publicly available information, findings of our research wing "East wind" & information that we consider reliable, but we do not represent that it is accurate or complete and we do not provide any express or implied warranty of any kind, and also these are subject to change without notice. The recipients of this report should rely on their own investigations, should use their own judgment for taking any investment decisions keeping in mind that past performance is not necessarily a guide to future performance & that the the value of any investment or income are subject to market and other risks. Further it will be safe to assume that NSL and /or its Group or associate Companies, their Directors, affiliates and/or employees may have interests/ positions, financial or otherwise, individually or otherwise in the recommended/mentioned securities/mutual funds/ model funds and other investment products which may be added or disposed including & other mentioned in this report/message.