

SGX NIFTY : 8153 (2 Pt Up)

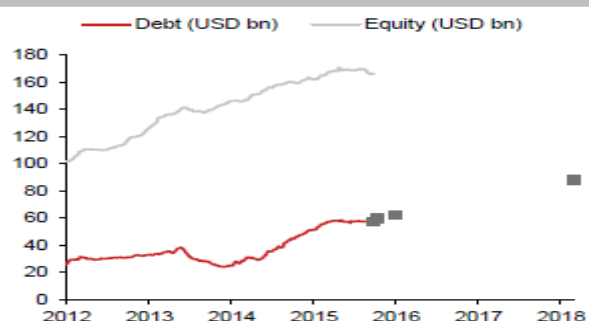
Quote of the Day

"Obviously the stock market is quite irrational in thus varying its valuation of a company proportionately with the temporary changes in its reported profits. A private business might easily earn twice as much in a boom year as in poor times, but its owner would never think of correspondingly marking up or down the value of his capital investment."

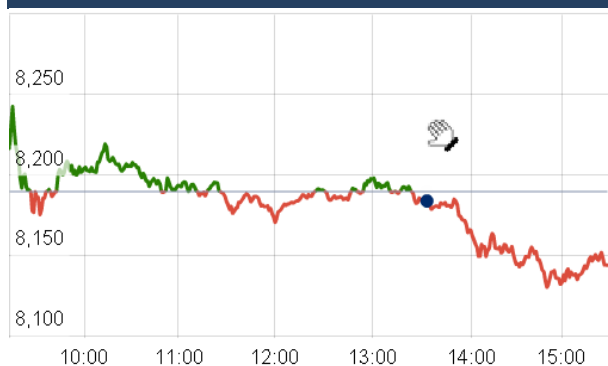
Benjamin Graham

Chart of the Day

FII Debt & Equity Holding Chart



Index Action Nifty (12th Oct 15)



Index

Contents	Page	Coverage
News	2	Update
Economic Calendar	3	Update

Market

Name	Value	Change
Sensex	26,904.71	(175.40)
Nifty	8189.70	60.35
DOW	17,131.86	47.37
NASDAQ	4,838.64	8.17
CAC	4,688.70	(12.69)
DAX	10,119.83	23.23
FTSE	6,371.18	(44.98)
NIKKEI	18,293.15	145.52
HANG SENG	22,700.44	(30.49)
EW ALL SHARE	14114.32	33.87

Instituional Turnover

FII

Investor	Buy(Cr.)	Sale(Cr.)	Net(Cr.)
12-Oct-15	3594.01	3110.15	483.86
Oct,15	28269.36	26388.69	1880.67
2015	925394.99	930760.20	(5365.21)

DII

Investor	Buy(Cr.)	Sale(Cr.)	Net(Cr.)
12-Oct-15	1583.23	1952.23	(369.00)
Oct,15	11711.04	12311.26	(600.22)
2015	373139.93	323122.14	50017.79

Commodity Price

Commodity/Currencies	Value	
GOLD	26778.00	↑
SILVER	36975.00	↑
CRUDEOIL	47.50	↑
COPPER	348.40	↑
NATURALGAS	165.10	↑
DOLLAR/RS.	64.75	↑
EURO/RS.	73.61	↑
POUND/RS.	99.28	↓

Market Snapshot

Top Price Performers

Top Performers 1D	% Change	Top Performers 1W	% Change	Top Performers 1M	% Change
BIRLACOT	25.00	DWARKESH	69.60	ENERGYDEV	158.44
STOREONE	20.00	DALMIASUG	61.75	KSOILS	120.83
DALMIASUG	19.94	ESL	57.21	MODIRUBBER	101.18
INDSWFTLAB	18.99	SIMBHSUGAR	50.91	FARMAXIND	100.00
ASTRAMICRO	17.43	HCL-INSYS	49.12	DWARKESH	97.49

Worst Price Performers

Worst Performers 1D	% Change	Worst Performers 1W	% Change	Worst Performers 1M	% Change
GLOBOFFS	(19.99)	GLOBOFFS	(25.77)	AEGISCHEM	(88.64)
CALSREF	(12.50)	ERAINFRA	(22.47)	AMTEKINDIA	(48.45)
CHIRAWA	(9.97)	KGNENT	(21.83)	VTCIND	(43.08)
SRSLTD	(9.92)	STEERINTER	(21.56)	OUTCTYTRVL	(40.86)
DOLATINVES	(9.44)	CANDC	(20.50)	MAHAPOL	(30.77)

Top News

- Indiabulls Housing Finance Mgt Guideline** : After raising Rs 4000 crore through qualified institutional placement (QIP) in September, the company is done with capital raising for the next 4-5 years assuming the company grows the book between 25-30% and profits are between 20-25% . The company in September successfully raised Rs 3,997 crore by allotting 56.93 million shares to qualified institutional buyers (QIBs).
- Alstom** has successfully manufactured and delivered India's first 800 kV high voltage direct current power transformer for the prestigious Champa-Kurukshetra ultra high voltage direct current phase 1 link
- PTC India** has inked pact with the Solar Energy Corporation of India (SECI) for sale and purchase of power generated from 3,000-mw solar projects for onward sale on a long-term basis, for a full 25 years from commercial operation date of each of the project/facility to state utilities,
- Kolte-Patil Developers** has completed the buy-out of 10 percent stake in its SPV, Corolla Realty, from 37 percent held earlier, for a total consideration of Rs 164 crore.
- Environment Ministry's green panel EAC** has approved drug maker Aurobindo Pharma 's proposal to expand its bulk drugs facility in Medak district in Telangana, entailing an investment of about Rs 300 crore. Company had sought green nod for increasing the production at its bulk drugs unit in Medak district to 421.2 tonnes per month (TPM) from the existing 96 TPM.
- Lanco Infratech** has pre-closed Rs 205.42 crore term loan with Yes Bank and expects cash flows to increase within 2-3 years after its projects become operational. The term loan was taken for a couple of solar power projects that are operating well and have healthy cash flows
- U.S-based oil and gas consultant** Degolyer and Macnaughton or D&M has submitted its draft report on the RIL-ONGC gas issue to DGH and to both the companies. News agency PTI says the D&M report has found connectivity between ONGC's G-4 block and RIL's KG-D6 block.
- Fitch Ratings** has given a stable outlook to Indiabulls Real Estate and expects the realty firm's debt to reduce by more than Rs 700 crore this fiscal. Fitch Ratings affirmed Indiabulls Real Estate Ltd's (IBREL) long-term foreign-currency issuer default rating (IDR) of 'B+'. "The outlook is stable .
- JSW Steel** said its crude steel production was lower at 3.25 million tonnes (MT) for the second quarter for the FY 2015-16. Crude steel production for the quarter ended September 2015 was lower at 3.25 MT as compared to 3.30 MT in Q2 last year as one of the blast furnaces at Vijayanagar works was taken under shut down for relining and is expected to be re-commissioned in early December 2015
- Indian Consumer Price Inflation (CPI)** for the month of September came in at 4.41 percent, much higher than the 3.66 percent recorded in the month of August,
- Mexican Industrial Production** rose to a seasonally adjusted annual rate of 1.0%, from 0.7% in the preceding month. Analysts had expected Mexican Industrial Production to rise to 1.1% last month.
- Danish CPI remained** unchanged at 0.5%, from 0.5% in the preceding month. Analysts had expected Danish CPI to remain unchanged at 0.5% last month.
- U.S. import price index** fell to a seasonally adjusted -0.1%, from -1.6% in the preceding month whose figure was revised up from -1.8%. Analysts had expected U.S. import price index to fall -0.5% last month.
- U.K. trade balance** rose to a seasonally adjusted -11.15B, from -12.20B in the preceding month whose figure was revised down from -11.08B. Analysts had expected U.K. trade balance to rise to -10.00B last month.
- Italian Industrial Production** fell to -0.5%, from 1.1% in the preceding month. Analysts had expected Italian Industrial Production to fall -0.3% last month.

Result Calendar Q2FY16

BSE Code	Company Name	Date	BSE Code	Company Name	Date
531247	ALPHA	12-Oct-15	506597	AMAL	16-Oct-15
500209	INFY	12-Oct-15	526847	ASHSI	16-Oct-15
524622	ISTRNETWK	12-Oct-15	500215	ATFL	16-Oct-15
523445	RIIL	12-Oct-15	501833	CHOWGULSTM	16-Oct-15
509992	UBENGG	12-Oct-15	532329	DANLAW	16-Oct-15
524661	WELCURE	12-Oct-15	532922	EDELWEISS	16-Oct-15
532772	DCBBANK	13-Oct-15	505737	INTLCOMBQ	16-Oct-15
538708	ETIL	13-Oct-15	523828	MENONBE	16-Oct-15
532999	NEXTGENT	13-Oct-15	532541	NIITTECH	16-Oct-15
538611	RTFL	13-Oct-15	500325	RELIANCE	16-Oct-15
500389	SILVERLINE	13-Oct-15	517447	RSSOFTWARE	16-Oct-15
507753	SREERAYA	13-Oct-15	517320	SAVINFOCO	16-Oct-15
532540	TCS	13-Oct-15	539353	SWARAJAUTO	16-Oct-15
531894	VATSAMUS	13-Oct-15	500407	SWARAJENG	16-Oct-15
500089	DICIND	14-Oct-15	513010	TATASPONGE	16-Oct-15
509567	GOACARBON	14-Oct-15	531846	TRINITYLEA	16-Oct-15
500189	HINDUJAVEN	14-Oct-15	500052	BEPL	17-Oct-15
500696	HINDUNILVR	14-Oct-15	500092	CRISIL	17-Oct-15
509069	INFOMEDIA	14-Oct-15	505368	REVATHI	17-Oct-15
531212	NALINLEA	14-Oct-15	511640	SANGHCO	17-Oct-15
539016	NEIL	14-Oct-15	532218	SOUTHBANK	17-Oct-15
532798	NETWORK18	14-Oct-15	504961	TATAYODOGA	17-Oct-15
507649	RASOI	14-Oct-15	532262	TCIIND	17-Oct-15
517506	TTKPRESTIG	14-Oct-15	506690	UNICHEMLAB	17-Oct-15
532800	TV18BRDCST	14-Oct-15	532345	GATI	19-Oct-15
505537	ZEEL	14-Oct-15	511288	GRUH	19-Oct-15
526433	ASMTEC	15-Oct-15	532281	HCLTECH	19-Oct-15
511505	CAPITALT	15-Oct-15	519552	HERITGFOOD	19-Oct-15
519600	CCL	15-Oct-15	500188	HINDZINC	19-Oct-15
532175	CYIENT	15-Oct-15	502937	KESORAMIND	19-Oct-15
533151	DBCORP	15-Oct-15	521248	KITEX	19-Oct-15
533896	FERVENTSYN	15-Oct-15	500262	MAFATLAFIN	19-Oct-15
509563	GARWAMAR	15-Oct-15	500266	MAHSCOOTER	19-Oct-15
514043	HIMATSEIDE	15-Oct-15	530011	MANGCHEFER	19-Oct-15
520066	JAYBARMARU	15-Oct-15	532892	MOTILALOF	19-Oct-15
501151	KARTKIN	15-Oct-15	506734	MYSORPETRO	19-Oct-15
590003	KARURVYSYA	15-Oct-15	535754	ORIENTCEM	19-Oct-15
526209	KSOILS	15-Oct-15	532522	PETRONET	19-Oct-15
534690	LAKSHVILAS	15-Oct-15	532987	RBL	19-Oct-15
500253	LICHSGFIN	15-Oct-15	532663	SASKEN	19-Oct-15
511000	MADHUSE	15-Oct-15	533228	SKSMICRO	19-Oct-15
523704	MASTEK	15-Oct-15	533158	THANGAMAYL	19-Oct-15
532819	MINDTREE	15-Oct-15	504966	TINPLATE	19-Oct-15
502742	SINTEX	15-Oct-15	532538	ULTRACEMCO	19-Oct-15
532953	VGUARD	15-Oct-15	500410	ACC	20-Oct-15
532893	VTMLTD	15-Oct-15	513729	AROGRANITE	20-Oct-15

519105	AVTNPL	20-Oct-15	520119	ASAL	23-Oct-15
532978	BAJAJFINSV	20-Oct-15	500820	ASIANPAINT	23-Oct-15
500034	BAJFINANCE	20-Oct-15	511243	CHOLAFIN	23-Oct-15
506285	BAYERCROP	20-Oct-15	534816	INFRATEL	23-Oct-15
532523	BIOCON	20-Oct-15	526169	MULTIBASE	23-Oct-15
511196	CANFINHOME	20-Oct-15	513262	SSWL	23-Oct-15
531344	CONCOR	20-Oct-15	505412	WENDT	23-Oct-15
511072	DHFL	20-Oct-15	532424	GODREJCP	24-Oct-15
508906	EVERESTIND	20-Oct-15	532732	KKCL	24-Oct-15
500469	FEDERALBNK	20-Oct-15	533179	PERSISTENT	25-Oct-15
500150	FOSECOIND	20-Oct-15	532888	ASIANILES	26-Oct-15
507488	GMBREW	20-Oct-15	512313	BIJLTEX	26-Oct-15
500182	HEROMOTOCO	20-Oct-15	500067	BLUESTARCO	26-Oct-15
533047	IMFA	20-Oct-15	500010	HDFC	26-Oct-15
502330	IPAPPM	20-Oct-15	509675	HIL	26-Oct-15
532926	JYOTHYLAB	20-Oct-15	523398	HITACHIOM	26-Oct-15
500233	KAJARIACER	20-Oct-15	533217	HMVL	26-Oct-15
526299	MPHASIS	20-Oct-15	531319	MARUTISE	26-Oct-15
539015	ORTEL	20-Oct-15	532988	RANEENGINE	26-Oct-15
500337	PRIMESECU	20-Oct-15	512115	ROSEMER	26-Oct-15
532661	RML	20-Oct-15	532390	TAJGVK	26-Oct-15
500674	SANOFI	20-Oct-15	538268	WONDERLA	26-Oct-15
501061	SBBJ	20-Oct-15	532215	AXISBANK	27-Oct-15
539268	SYNGENE	20-Oct-15	503960	BBL	27-Oct-15
532794	ZEEMEDIA	20-Oct-15	531530	BETALA	27-Oct-15
522134	ARTSONEN	21-Oct-15	506395	COROMANDEL	27-Oct-15
532977	BAJAJ-AUTO	21-Oct-15	523708	EIMCOELECO	27-Oct-15
500490	BAJAJHLDNG	21-Oct-15	511676	GICHSGFIN	27-Oct-15
532792	CAIRN	21-Oct-15	505283	KIRLPNU	27-Oct-15
500180	HDFCBANK	21-Oct-15	532504	NAVINFLUOR	27-Oct-15
532822	IDEA	21-Oct-15	531209	NUCLEUS	27-Oct-15
538835	INTELLECT	21-Oct-15	523642	PIIND	27-Oct-15
500228	JSWSTEEL	21-Oct-15	500411	THERMAX	27-Oct-15
532400	KPIT	21-Oct-15	500008	AMARAJABAT	28-Oct-15
532720	M&MFIN	21-Oct-15	500425	AMBUJACEM	28-Oct-15
532756	MAHINDCIE	21-Oct-15	521210	CITYMAN	28-Oct-15
500304	NIITLTD	21-Oct-15	500096	DABUR	28-Oct-15
532481	NOIDATOLL	21-Oct-15	505700	ELECON	28-Oct-15
532301	TATACOFFEE	21-Oct-15	533208	EMAMIPAP	28-Oct-15
514142	TTL	21-Oct-15	531600	GOGIACAP	28-Oct-15
507685	WIPRO	21-Oct-15	532662	HTMEDIA	28-Oct-15
531335	ZYDUSWELL	21-Oct-15	500306	JAYKAY	28-Oct-15
532321	CADILAHC	22-Oct-15	524378	JMDEPACKR	28-Oct-15
532628	3IINFOTECH	23-Oct-15	533293	KIRLOSENG	28-Oct-15

500264	MAFATIND	28-Oct-15	501110	SUNRINV	30-Oct-15
531039	MSECURI	28-Oct-15	500114	TITAN	30-Oct-15
512309	ROSETEX	28-Oct-15	524129	VINYLINDIA	30-Oct-15
522034	SHANTIGEAR	28-Oct-15	531519	ANKUSHFI	31-Oct-15
502180	SHREDIGCEM	28-Oct-15	526125	ARHNTTO	31-Oct-15
532498	SHRIRAMCIT	28-Oct-15	521216	DHANROTO	31-Oct-15
500830	COLPAL	29-Oct-15	500171	GHCL	31-Oct-15
532526	DISHMAN	29-Oct-15	500660	GLAXO	31-Oct-15
500124	DRREDDY	29-Oct-15	532659	IDFC	31-Oct-15
503681	ELCIDIN	29-Oct-15	500220	JASCH	31-Oct-15
531162	EMAMILTD	29-Oct-15	530405	JINDCAP	31-Oct-15
504840	KAIRA	29-Oct-15	532644	JKCEMENT	31-Oct-15
521242	KANDAGIRI	29-Oct-15	508993	KEDIACN	31-Oct-15
500250	LGBBROSLTD	29-Oct-15	511728	KZLFIN	31-Oct-15
517449	MAGNAELQ	29-Oct-15	531221	MAYURFL	31-Oct-15
500452	NEPCAGRO	29-Oct-15	526935	MBPARIKH	31-Oct-15
500301	NEPCMICON	29-Oct-15	526891	MKTCREAT	31-Oct-15
531077	NEPCPAPER	29-Oct-15	508875	NITINALOY	31-Oct-15
521192	NEPCTEX	29-Oct-15	511403	SAJEEV	31-Oct-15
500790	NESTLEIND	29-Oct-15	521234	SRINACHA	31-Oct-15
500313	OILCOUNTUB	29-Oct-15	506655	SUDARSCEM	31-Oct-15
501154	ROSEI	29-Oct-15	524038	VENLONENT	31-Oct-15
500472	SKFINDIA	29-Oct-15	508933	WELSPSY	31-Oct-15
509930	SUPREMEIND	29-Oct-15	538873	WINYCOMM	31-Oct-15
500420	TORNTPHARM	29-Oct-15	500136	ESTER	02-Nov-15
514470	WINSOMTX	29-Oct-15	500500	HINDMOTORS	02-Nov-15
533227	AHLEAST	30-Oct-15	500252	LAXMIMACH	02-Nov-15
532166	ALKASEC	30-Oct-15	506590	PHILIPCARB	02-Nov-15
500877	APOLLOTYRE	30-Oct-15	503837	SHRAJSYNQ	02-Nov-15
500027	ATUL	30-Oct-15	500403	SUNDRMFAST	02-Nov-15
500049	BEL	30-Oct-15	507747	TTKHEALTH	02-Nov-15
500147	CMIFPE	30-Oct-15	511764	UPASAFN	02-Nov-15
523754	EPCIN	30-Oct-15	539118	VRLOG	02-Nov-15
532174	ICICIBANK	30-Oct-15	500002	ABB	03-Nov-15
532612	INDOCO	30-Oct-15	523411	ADCINDIA	03-Nov-15
506161	ISHWATR	30-Oct-15	509480	BERGEPAIN	03-Nov-15
500247	KOTAKBANK	30-Oct-15	500085	CHAMBLFERT	03-Nov-15
532652	KTKBANK	30-Oct-15	532865	MEGH	03-Nov-15
532313	MAHLIFE	30-Oct-15	500338	PRISMCEM	03-Nov-15
530243	MANGASOF	30-Oct-15	523236	SHRENUJ	03-Nov-15
500126	MERCK	30-Oct-15	534369	TBZ	03-Nov-15
509196	MMRUBBR-B	30-Oct-15	532755	TECHM	03-Nov-15
531049	NEELKAN	30-Oct-15	500414	TIMEX	03-Nov-15
500730	NOCIL	30-Oct-15	532548	CENTURYPLY	04-Nov-15
502420	ORIENTPPR	30-Oct-15	533150	GODREJPROP	04-Nov-15
532915	RELIGARE	30-Oct-15	509162	INDAG	04-Nov-15
519230	RICHIRICH	30-Oct-15	532945	SHRIRAMEPC	04-Nov-15
538876	STSERV	30-Oct-15	524542	SUKHJITS	04-Nov-15
517168	SUBROS	30-Oct-15	532156	VAIBHAVGBL	04-Nov-15

500645	DEEPAKFERT	05-Nov-15	507966	RASRESOR	06-Nov-15
500133	ESABINDIA	05-Nov-15	532515	TVTODAY	06-Nov-15
505790	FAGBEARING	05-Nov-15	500069	BNKCAP	07-Nov-15
517044	IDM	05-Nov-15	532133	IFGLREFRAC	07-Nov-15
519606	INTEGFD	05-Nov-15	502150	KLYNCEM	07-Nov-15
531213	MANAPPURAM	05-Nov-15	502450	SESHAPAPER	07-Nov-15
532097	MUKANDENGG	05-Nov-15	520113	VESUVIUS	07-Nov-15
520151	SHREYAS	05-Nov-15	523248	MACPLASQ	08-Nov-15
503804	SHRIDINE	05-Nov-15	500547	BPCL	09-Nov-15
521232	SUNILTX	05-Nov-15	530171	DAULAT	09-Nov-15
500470	TATASTEEL	05-Nov-15	505800	RANEHOLDIN	09-Nov-15
523319	BALMLAWRIE	06-Nov-15	532509	SUPRAJIT	09-Nov-15
532485	BLIL	06-Nov-15	522113	TIMKEN	09-Nov-15
514440	BPTX	06-Nov-15	526775	VALIANT	09-Nov-15
522261	DOLPHINOFF	06-Nov-15	500202	INDLEASE	13-Nov-15
523736	DPL	06-Nov-15	501343	MOTOGENFIN	13-Nov-15
500164	GODREJIND	06-Nov-15	530897	NGIND	13-Nov-15
500520	M&M	06-Nov-15	526947	LAOPALA	14-Nov-15
532777	NAUKRI	06-Nov-15	530125	SAMRATPH	14-Nov-15
532460	PONNIERODE	06-Nov-15	500387	SHREECEM	14-Nov-15
500260	RAMCOCEM	06-Nov-15	511626	RRFIN	14-Dec-15

Economic Calendar

Country	Monday 12th Oct 15	Tuesday 13th Oct 15	Wednesday 14th Oct 15	Thursday 15th Oct 15	Friday 16th Oct 15
US	30-y Bond Auction .	NFIB Small Business Index .	Core Retail Sales m/m , PPI m/m , Retail Sales m/m , Core PPI m/m , Business Inventories m/m , Crude Oil Inventories .	CPI m/m , Core CPI m/m , Unemployment Claims , Empire State Manufacturing Index , Philly Fed Manufacturing Index , Natural Gas Storage , Beige Book .	Capacity Utilization Rate , Industrial Production m/m , Prelim UoM Consumer Sentiment , JOLTS Job Openings , Prelim UoM Inflation Expectations , TIC Long-Term Purchases .
UK/EURO ZONE	CB Leading Index m/m , BRC Retail Sales Monitor y/y .	German Final CPI m/m , French CPI m/m , German ZEW Economic Sentiment , ZEW Economic Sentiment , 10-y Bond Auction ,	CPI y/y , PPI Input m/m , RPI y/y , Industrial Production m/m , German 10-y Bond Auction , Spanish 10-y Bond Auction ,	Average Earnings Index 3m/y , Claimant Count Change , Unemployment Rate , CBI Industrial Order Expectations ,	German WPI m/m , Final CPI y/y , Final Core CPI y/y , Trade Balance .
INDIA	IIP Data .		WPI Data .		



(Regn. No. : INP 000004011)

Narnolia Securities Ltd.

Narnolia Research Lab

Stellar IT Park | 5th Floor | Office Space No. 6 | Tower-II Ind Plot No. C-25 | Sector-62 | Noida
| Ph : 0120-4215110

Central Strategy Desk - Kolkata

124 | 1st Floor | 7/1 Lords Sinha Road | Kolkata - 71
Ph : 033-22821500 | M : 93347 14418, 98302 69810