

SGX NIFTY : 8761 (47 Pt Up)

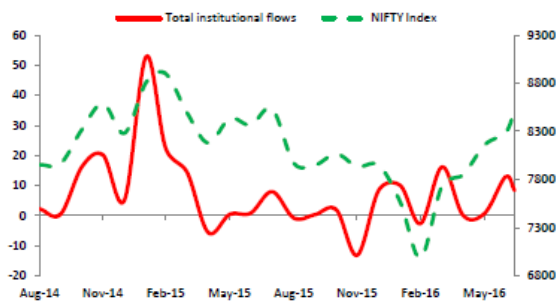
Quote of the Day

"Bargains are the holy grail of the true stockpicker. The fact that 10 to 30 percent of our net worth is lost in a market sell-off is of little consequence. We see the latest correction not as a disaster but as an opportunity to acquire more shares at low prices. This is how great fortunes are made over time."

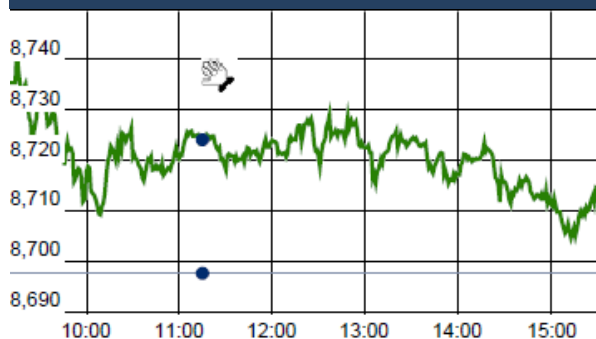
Peter Lynch

Chart of the Day

PMI Trend



Index Action Nifty (11th Oct 16)



Index

Contents	Page	Coverage
News	2	Update
Economic Calendar	3	Update

Market

Name	Value	Change
Sensex	28,082.34	21.20
Nifty	8708.80	11.20
DOW	18,268.50	(12.53)
NASDAQ	5,239.02	(7.77)
CAC	4,452.22	(19.50)
DAX	10,523.07	(54.09)
FTSE	7,024.01	(46.87)
NIKKEI	16,911.55	71.55
HANG SENG	23,270.89	(136.16)
EW ALL SHARE	15694.00	(21.65)

Instituional Turnover

FII

Investor	Buy(Cr.)	Sale(Cr.)	Net(Cr.)
11-Oct-16	1742.57	2289.83	(547.26)
Oct,16	31389.12	29192.46	2196.66
2016	734626.74	708521.75	26104.99

DII

Investor	Buy(Cr.)	Sale(Cr.)	Net(Cr.)
11-Oct-16	2058.51	1589.55	468.96
Oct,16	18656.50	18766.34	(109.84)
2016	310900.55	310678.28	222.27

Commodity Price

Commodity/Currencies	Value	
GOLD	29651.00	↓
SILVER	42051.00	↑
CRUDEOIL	49.21	↑
COPPER	324.00	↓
NATURALGAS	214.50	↓
DOLLAR/RS.	66.53	↓
EURO/RS.	73.56	↑
POUND/RS.	81.33	↓

Market Snapshot

Top Price Performers

Top Performers 1D	% Change	Top Performers 1W	% Change	Top Performers 1M	% Change
ARCHIDPLY	20.00	REMIMETAL	58.24	GTLINFRA	159.84
MCDHOLDING	19.97	XLENERGY	50.94	RAINBOWPAP	113.47
PNC	19.95	SUJANAUNI	47.52	FACORALL	105.49
MEGASOFT	19.95	ALKALI	46.34	PRIMESECU	97.92
PSL	19.94	MEGASOFT	46.22	UBHOLDINGS	89.61

Worst Performers 1D	% Change	Worst Performers 1W	% Change	Worst Performers 1M	% Change
RADHEDE	(11.56)	KANANIIND	(19.87)	MANDHANA	(75.64)
KANANIIND	(10.93)	VTCIND	(15.75)	ROLATAN	(46.58)
COMMEXTECH	(8.51)	NEOCORP	(14.46)	ENTEGRA	(38.29)
SATRAPROP	(6.77)	GTL	(13.61)	HINDUJAFO	(37.49)
ABGHEAVY	(6.06)	MODERN	(11.68)	YBRANTDIGI	(32.82)

Top News

• Mgt int : TATAMOTORS

Expect Q3 show to improve on strong festive demand: Tata Motors

The auto industry is seeing a good demand in a long time, due to festive season.

On the back of this festive demand, Mgt expects Tata Motors' 3Q performance to improve YoY.

The company doesn't plan to launch a compact SUV soon, but will launch Hexa SUV in January

• **FMCG major ITC Ltd** said it would divest 100 % of its equity stake in US-based King Maker Marketing Inc for an estimated consideration of \$24 million. King Maker Marketing Inc has clocked sales of Rs 216.97 cr and PAT of Rs 3.49 cr in FY16. Book value of the investment in ITC's balance sheet is Rs 10.23(204 Shares of Common Stock with no par value).

• **Gujarat State Fertilizers & Chemicals Mgt Guideline** : The 18 percent reduction in domestic natural gas price that the government effected on October 1 will help Gujarat State Fertilizers & Chemicals boost margins . The gas price cut will see reduced interest costs and lower the working capital for the company, said VD Nanavaty, Senior VP-Finance and Chief Finance Officer of GSFC. This is likely to lead to a 7-8 percent rise in margins

• **UFO Moviez** gets 35 percent of its business from ad revenues, says the company's Joint Managing Director Kapil Agarwal. He expects 30 percent growth in ad revenues in FY17. This will contribute to a consolidated revenue growth of 15 percent in FY17. The company is going to concentrate on volume-led growth in advertisements and not price. Pricing is only picking up around 4-5 percent annually.

• **Ruchira Papers** said that demand for paper is increasing and that's the reason for the sector to be excited. Company further said that because of demand increase the prices and realisations are slightly better . Garg also spoke about Ballarpur Industries ' (BILT) two plant shutdowns and its effects.

• New Maruti Suzuki Alto to get crossover styling

In March this year, Maruti Suzuki revealed that the company was planning to develop a new-generation Alto.

The next-generation Alto will be developed on a new platform.

The company is also planning to revamp the WagonR (code-named YCA) and the Celerio (code-named YNC) and launch the new models in the next three years

This is part of the company's bigger plan of launching 15 new models in India by 2020.

• **Cipla** has received Establishment Inspection Report from the US health regulator for its Indore plant after completion of the inspection there. The company has "received Establishment Inspection Report (EIR) from the United States Food and Drug Administration (USFDA) for its Indore facility indicating formal closure of the USFDA inspection conducted in July/August, 2015," . EIR is given after the successful completion of the inspection by the USFDA.

• **Japan's Bank Lending** rose to a seasonally adjusted annual rate of 2.2%, from 2.0% in the preceding quarter. Analysts had expected Japan's Bank Lending to remain unchanged at 2.0% in the last quarter.

• **Russian Trade Balance** fell to a seasonally adjusted annual rate of 4.93B, from 6.49B in the preceding month. Analysts had expected Russian Trade Balance to rise to 7.20B last month.

• **Mexican Industrial Production** rose to a seasonally adjusted annual rate of 0.3%, from -1.0% in the preceding month. Analysts had expected Mexican Industrial Production to rise to 0.7% last month.

• **Euro zone industrial production** rose to a seasonally adjusted 1.6%, from -0.7% in the preceding month whose figure was revised up from -1.1%. Analysts had expected Euro zone industrial production to rise 1.5% last month.

Economic Calendar					
Country	Monday 10th Oct 16	Tuesday 11th Oct 16	Wednesday 12th Oct 16	Thursday 13th Oct 16	Friday 14th Oct 16
US	NFIB Small Business Index , Labor Market Conditions Index m/m		10-y Bond Auction , FOMC Meeting Minutes .	Unemployment Claims , Import Prices m/m , Natural Gas Storage , Crude Oil Inventories , 30-y Bond Auction , Federal Budget Balance.	Core Retail Sales m/m ,PPI m/m , Retail Sales m/m , Core PPI m/m , Prelim UoM Consumer Sentiment , Business Inventories m/m , Prelim UoM Inflation Expectations .
UK/EURO ZONE	German Trade Balance ,French 10-y Bond Auction , German 10-y Bond Auction .	CPI y/y , PPI Input m/m , RPI y/y ,German ZEW Economic Sentiment , ZEW Economic Sentiment .	Industrial Production m/m , Spanish 10-y Bond Auction .	Retail Sales m/m , MPC Official Bank Rate Votes , Monetary Policy Summary , Official Bank Rate , Asset Purchase Facility .	French Final CPI m/m , Trade Balance , BOE Credit Conditions Survey .
INDIA			IIP Data		WPI Data

Risk Disclosure & Disclaimer : This report/message is for the personal information of the authorized recipient and does not construe to be any investment, legal or taxation advice to you. Narnolia Securities Ltd. (Hereinafter referred as NSL) is not soliciting any action based upon it. This report/message is not for public distribution and has been furnished to you solely for your information and should not be reproduced or redistributed to any other person in any form. The report/message is based upon publicly available information, findings of our research wing "East wind" & information that we consider reliable, but we do not represent that it is accurate or complete and we do not provide any express or implied warranty of any kind, and also these are subject to change without notice. The recipients of this report should rely on their own investigations, should use their own judgment for taking any investment decisions keeping in mind that past performance is not necessarily a guide to future performance & that the the value of any investment or income are subject to market and other risks. Further it will be safe to assume that NSL and /or its Group or associate Companies, their Directors, affiliates and/or employees may have interests/ positions, financial or otherwise, individually or otherwise in the recommended/mentioned securities/mutual funds/ model funds and other investment products which may be added or disposed including & other mentioned in this report/message. NSL or any of its affiliates or employees shall not be in any way responsible for any loss or damage that may arise to any person from any action taken based on the above information or inadvertent error in the information contained in this report/message.



(Regn. No. : INP 000004011)

Narnolia Securities Ltd.

Narnolia Research Lab

Stellar IT Park | 5th Floor | Office Space No. 6 | Tower-IIInd Plot
No. C-25 | Sector-62 | Noida | Ph : 0120-4215110

Central Strategy Desk - Kolkata

201 | 2nd Floor | Marble Arch Building | 236B-AJC Bose Road
Kolkata-700 020 , Ph : 033-40501500 |
Email : research@narnolia.com | www.narnolia.com