

SGX NIFTY : 7214 (40 Pt Up)

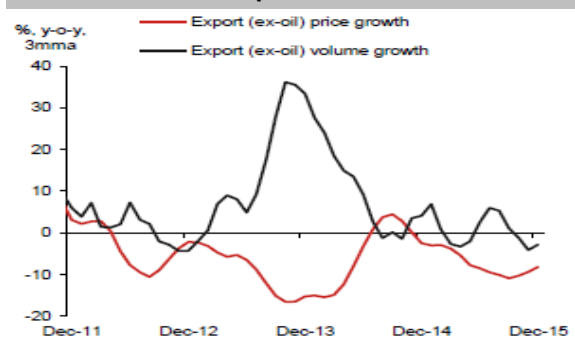
Quote of the Day

"The line separating investment and speculation, which is never bright and clear, becomes blurred still further when most market participants have recently enjoyed triumphs. Nothing sedates rationality like large doses of effortless money."

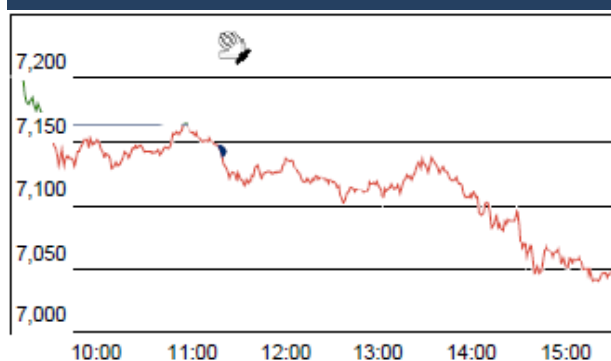
Warren Buffett

Chart of the Day

Export Trend



Index Action Nifty (16th Feb 16)



Index

Contents	Page	Coverage
News	2	Update
Economic Calendar	3	Update

Market

Name	Value	Change
Sensex	23,191.97	(362.17)
Nifty	7048.25	(114.70)
DOW	15,973.84	313.66
NASDAQ	4,435.95	98.45
CAC	4,110.66	(4.59)
DAX	9,135.11	(71.73)
FTSE	5,862.71	37.89
NIKKEI	15,944.64	-109.79
HANG SENG	19,182.57	60.49
EW ALL SHARE	12247.68	(216.78)

Instituional Turnover

FII

Investor	Buy(Cr.)	Sale(Cr.)	Net(Cr.)
16-Feb-16	2898.07	3862.26	(964.19)
Feb,16	11211.97	12036.26	(824.29)
2016	91017.79	106058.19	(15040.40)

DII

Investor	Buy(Cr.)	Sale(Cr.)	Net(Cr.)
16-Feb-16	1525.18	934.45	590.73
Feb,16	3975.79	4243.99	(268.20)
2016	48130.87	36160.31	11970.56

Commodity Price

Commodity/Currencies	Value	
GOLD	28882.00	↑
SILVER	37244.00	↑
CRUDEOIL	29.51	↓
COPPER	311.10	↑
NATURALGAS	129.70	↓
DOLLAR/RS.	68.37	↑
EURO/RS.	76.37	↑
POUND/RS.	97.98	↑

Market Snapshot

Top Price Performers

Top Performers 1D	% Change	Top Performers 1W	% Change	Top Performers 1M	% Change
LPDC	18.24	NETWORK	21.18	NDTV	59.52
VALECHAENG	16.09	RAMCOSYS	15.83	TFL	58.11
WSI	15.52	GOLDIAM	14.27	STOREONE	55.67
JMTAUTOLTD	10.65	APOLLOTYRE	13.99	INFODRIVE	36.59
OPTOCIRCUI	9.99	ABGHEAVY	13.71	PRICOL	32.73

Worst Performers 1D	% Change	Worst Performers 1W	% Change	Worst Performers 1M	% Change
BIRLACOT	(20.00)	PDUMJEPULP	(59.70)	PDUMJEPULP	(51.16)
ROHITFERRO	(19.83)	AFL	(34.67)	SYNCOM	(42.80)
SUPREMEINF	(19.19)	BLISSGVS	(30.94)	JUSTDIAL	(41.84)
SHREYAS	(15.25)	SHREYAS	(27.87)	GEMINI	(38.74)
SURAJLTD	(12.36)	EDL	(27.45)	WOCKPHARMA	(37.32)

Top News

- Omoxe Ltd's** sales booking has increased by 16 percent to Rs 1,335 crore in the April-December period of this fiscal. Company sold a total of 3.57 million sq ft, consisting of 3.10 million sq ft of residential spaces and 0.47 million sq ft of commercial spaces with a total sales value of Rs 1,335 crore. The average realisation for the year ended is Rs 3,744 per sq ft . Omoxe had sold 2.87 million sq ft for Rs 1,145 crore in the corresponding period of the previous fiscal.
- High Court** issued notice to the Centre on a PIL seeking to ban websites from selling scheduled medicines online in violation of Drugs and Cosmetic Rules.
- S&P Ratings** revised the outlook on Bank of India to negative from stable as it sees the asset quality of the state-run lender weakening over 12-18 months . The US-based rating agency, however, affirmed 'BBB-' long-term and 'A-3' short-term issuer credit ratings on BoI, which reflects sound franchise and a very high likelihood of support from the government. S&P said it expects BoI's credit costs to remain high because of continued pressure on asset quality, given the tough operating conditions for the corporate sector in India.
- Bharat Petroleum Corp Ltd (BPCL)** has received clearance from the Environment Ministry for a Rs 337-crore project at its Kochi Refinery in Kerala. Based on the recommendations of the Expert Appraisal Committee (EAC), the Environment Ministry has given coastal regulation zone (CRZ) clearance to BPCL's project 'laying heat traced pipeline' from south tanker berth to Kochi Refinery in Ernakulam
- HCL Tech** has signed a five-year deal with automobile giant Volvo for its external IT business. The new deal will add close to 40 new clients, 3,500 applications, 20 data centers and include 2500 employees in about 11 countries, says Pankaj Tagra, Head of Nordics Business at HCL Tech. The deal is the biggest in the sector in last two years in the global space. The deal is for five years and will be extended post that. The external business is just a fraction of the total internal business, which we would be signing up with Volvo
- The government** is considering to increase the foreign investment limit in public sector banks to 49 percent from 20 percent with a view to attract overseas inflows. If the government accepts this proposal, it would lead to amendments in various Acts dealing with public sector banks to enable raising foreign investment limit. 20 percent foreign investment is permitted in the PSBs under government approval route.
- Gammon Infra** said that the newly acquired projects can add Rs 175-200 crore to the company's revenue on an annual basis.
- U.S. TIC long term purchases** fell to a seasonally adjusted -29.4B, from 31.4B in the preceding month. Analysts had expected U.S. TIC long term purchases to rise 30.0B last month.
- Brazilian Retail Sales** rose to a seasonally adjusted -7.1%, from -7.8% in the preceding month. Analysts had expected Brazilian Retail Sales to rise to -7.1% last month.
- Euro zone ZEW economic sentiment** fell to a seasonally adjusted 13.6, from 22.7 in the preceding month. Analysts had expected Euro zone ZEW economic sentiment to fall to 10.3 last month.
- U.K. Retail Price Inflation** rose to a seasonally adjusted 1.3%, from 1.2% in the preceding quarter. Analysts had expected U.K. Retail Price Inflation to rise to 1.4% in the last quarter.
- U.K. PPI input** fell to a seasonally adjusted -0.7%, from -0.3% in the preceding month whose figure was revised up from -0.8%. Analysts had expected U.K. PPI input to fall -1.4% last month.
- Taiwanese Trade Balance** fell to a seasonally adjusted annual rate of 3.51B, from 4.17B in the preceding month. Analysts had expected Taiwanese Trade Balance to rise to 4.33B last month.

Economic Calendar

Country	Monday 15th Feb 16	Tuesday 16th Feb 16	Wednesday 17th Feb 16	Thursday 18th Feb 16	Friday 19th Feb 16
US	TIC Long-Term Purchases	Empire State Manufacturing Index , Mortgage Delinquencies , NAHB Housing Market Index.	Building Permits ,PPI m/m , FOMC Meeting Minutes , Industrial Production m/m , Capacity Utilization Rate , Housing Starts, FOMC Member Bullard Speaks.	Philly Fed Manufacturing Index ,Unemployment Claims , CB Leading Index m/m , Natural Gas Storage , Crude Oil Inventories .	CPI m/m ,Core CPI m/m .
UK/EURO ZONE	Trade Balance	German Constitutional Court Ruling , CPI y/y , German ZEW Economic Sentiment , ZEW Economic Sentiment.	Average Earnings Index 3m/y , Claimant Count Change ,	ECB Monetary Policy Meeting Accounts , Current Account , French 10-y Bond Auction .	Retail Sales m/m , Public Sector Net Borrowing , Consumer Confidence .
INDIA	WPI Data .				

Narnolia Research Lab

Stellar IT Park | 5th Floor | Office Space No. 6 | Tower-II Ind Plot No. C-25 | Sector-62 | Noida | Ph : 0120-4215110

Central Strategy Desk - Kolkata

124 | 1st Floor | 7/1 Lords Sinha Road | Kolkata - 71
Ph : 033-22821500 | M : 93347 14418, 98302 69810