

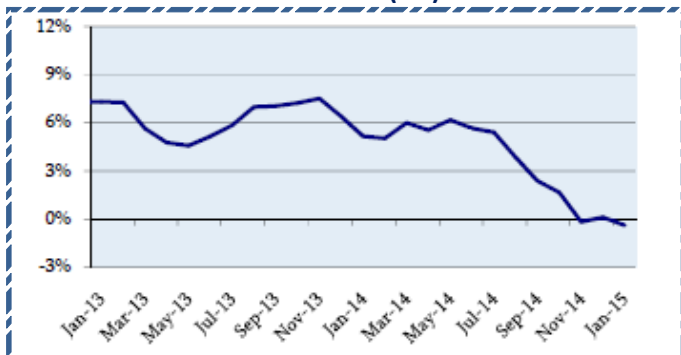
Quote of the Day

"By confining himself to a relatively few, easy-to-understand cases, a reasonably intelligent, informed and diligent person can judge investment risks with a useful degree of accuracy." **Benjamin Graham**

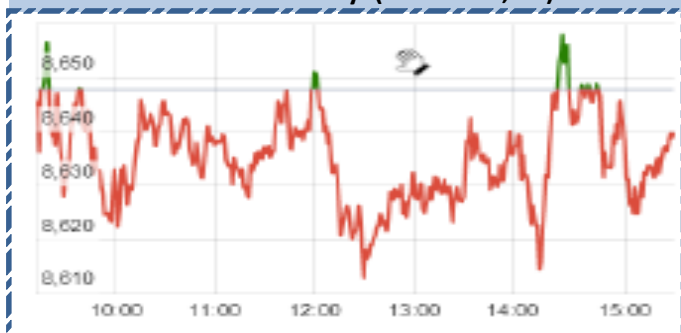
SGX NIFTY : 8852 (9 Pt Up)

Chart of the Day

WPI Trend (%)



Index Action-Nifty (16th Mar, 15)



Index

Contents	Page	Coverage
News	2	UPDATE
Economic Calendar	3	UPDATE

MARKET		
Name	Value	Change
Sensex	28437.71	(65.59)
Nifty	8633.15	(14.60)
DOW	17977.42	(228.11)
NASDAQ	4929.51	57.75
CAC	5061.16	50.70
DAX	12167.72	266.11
FTSE	6804.08	63.50
NIKKIE	19403.19	157.13
HANG SENG	24084.06	134.51
EW ALL SHARE	14661.72	(200.76)

INSTITUTIONAL TURNOVER			
FII			
Investor	Buy(Cr.)	Sale(Cr.)	Net(Cr.)
16th Mar	4582.91	5,345.46	(762.55)
Mar,15	54215.06	50,468.23	3746.83
2015	257990.79	2,36,892.02	21098.77
DII			
Investor	Buy(Cr.)	Sale(Cr.)	Net(Cr.)
16th Mar	1469.32	1,310.67	158.65
Mar,15	18172.00	18,850.81	(678.81)
2015	91958.39	98,806.65	(6848.26)

COMMODITY PRICE		
COMMODITY/CURRENCIES	Value	
GOLD	25775.00	↓
SILVER	35551.00	↑
CRUDEOIL	46.08	↓
COPPER	373.45	↓
NATURALGAS	171.50	↑
DOLLAR/RS.	62.81	↓
EURO/RS.	66.33	↑
POUND/RS.	93.10	↑

Narnolia Securities Ltd.

Markets Snapshot

Top Price Performers

Top Performers 1D	% Change	Top Performers 1W	% Change	Top Performers 1M	% Change
ELPROINTL	20.00	NATCOPHARM	46.66	WESTE	105.49
VIMTALABS	19.98	JUBLINDS	44.40	WANBURY	92.32
FLATPROD	16.63	HESTERBIO	35.39	SHLAKSHMI	75.85
IITL	14.58	ADHUNIK	31.75	BFINVEST	73.51
MANJEERA	12.00	PDUMJEPULP	31.37	ENTEGRA	72.25

Worst Price Performers

Worst Performers 1D	% Change	Worst Performers 1W	% Change	Worst Performers 1M	% Change
MANINDS	(14.27)	GEMINI	(34.67)	SCANPGEOM	(46.42)
BILENERGY	(12.63)	JMDTELEFILM	(24.15)	DIAPOWEP	(40.14)
FACORALL	(11.76)	ONELIFECAP	(22.84)	GEINDSYS	(39.10)
ARIHANT	(10.67)	XLENERGY	(20.10)	GEMINI	(35.10)
SUJANAUNI	(10.55)	CHLOGIST	(19.97)	STRAUSIND	(33.33)

Top News :

- Blue Star Mgt Guideline :** Company has announced the transfer of its Professional Electronics & Industrial Systems (PE&IS) business to wholly-owned subsidiary called Blue Star Engineering & Electronics on lumpsum basis at consideration of Rs 110.5 crore. The company expects its PE&IS business, which reported a turnover of Rs 122 crore for 2013-14, to scale up once it gets independent identity. Company estimate is by March the market in value terms should have grown by around 19 percent or so and in volume terms by around 10 percent and Company has been growing at least 10 percentage points higher than the market . FY16 outlook is something like minimum of 15 percent growth and company is aiming 10 percentage point more than the market growth which means 25. So the planning of inventory and other marketing inputs are all based on this kind of growth numbers.

- SBI Mgt Guideline :** The capital adequacy ratio (CAR) of the bank will go up from 10.66% to 11.1 percent With the forthcoming over Rs 2900-crore preferential issue to government as part of its capital infusion plan this fiscal . Mgt said the bank had an enabling resolution to raise Rs 15,000 crore but the timeline and exact amount was not yet decided. Mgt denied the news report of the bank rejecting USD 1 billion loan to Adani Enterprises and said the matter was still in process and decision was still pending. Mgt said that in case the cost of funds were to go down then the bank would look to cut base rates . There was likelihood of a rate cut in first quarter of FY16.

- Granules India Ltd** has informed that US-FDA had inspected Gagillapur facility last week and the inspection concluded with no observations. The inspection was triggered by one of the applicant's ANDA filing.

- ONGC Clarification :** News regarding "OVL in talks to buy stake in two Siberia oilfields" Oil & Natural Gas Corporation Ltd replied stating "ONGC Videsh, the overseas arm and 100% subsidiary of Oil and Natural Gas Corporation Limited (ONGC), is regularly in the process of scouting for E&P opportunities worldwide and, as a part of these efforts, is routinely engaged with many overseas E&P companies, including Russian companies. Accordingly, ONGC Videsh was in preliminary discussions with a Russian Oil Company for possible acquisition of Participating Interest in two Siberian oil fields.

- UltraTech Cement** has commissioned its clinkerisation plant of 2 mtpa at Aditya Cement Works, Shambhupura, Rajasthan . A communication being sent to the financial analysts and investors is attached titled "Commissioning of 3rd Clinker Line at Aditya Cement Shambhupura, Rajasthan"Source

- Suven Life Sciences** secures 2 (two) Product Patents for their NCE's through New mechanism of action H3 Inverse Agonist in USA & New Zealand

- Canadian foreign securities purchases** rose to a seasonally adjusted 5.73B, from -13.54B in the preceding month whose figure was revised up from -13.55B.

- Feb 2015 WPI Inflation is @ -2.06% Vs Expectation -0.65% Vs -0.39% (MoM) . Feb Food Article 7.74% Vs 8% (MoM) . Feb 2015 , Manufacturing Pdt Inflation @ 0.33% Vs 1.05% (MoM) . Feb 2015 , Fuel & Power Inflation @ -14.72 Vs 10.39% (MOM) . Feb 2015 , Primary Article inflation @ 1.43% Vs 3.27% (MoM) . Feb 2015 , Non Food Article Inflation @ -5.55% Vs -4.07% (MOM)**

Economic Calendar

	Monday 16-Mar-15	Tuesday 17-Mar-15	Wednesday 18-Mar-15	Thursday 19-Mar-15	Friday 20-Mar-15
US	Empire State Manufacturing Index , Capacity Utilization Rate , Industrial Production m/m , TIC Long-Term Purchases .	Building Permits , Housing Starts , NAHB Housing Market Index .	FOMC Economic Projections , FOMC Statement , Federal Funds Rate , FOMC Press Conference .	Unemployment Claims ,Current Account , Philly Fed Manufacturing Index , Natural Gas Storage .	Flash Manufacturing PMI , CB Leading Index m/m .
UK/EURO ZONE	German Buba Monthly Report , CB Leading Index m/m .	German WPI m/m , German ZEW Economic Sentiment , Final CPI y/y , ZEW Economic Sentiment , Employment Change q/q , Final Core CPI y/y .	Average Earnings Index 3m/y , Claimant Count Change , MPC Official Bank Rate Votes ,MPC Asset Purchase Facility Votes , Unemployment Rate , Annual Budget Release .	ECB Economic Bulletin , Targeted LTRO , CBI Industrial Order Expectations .	French Flash Manufacturing PMI , French Flash Services PMI , German Flash Manufacturing PMI , German Flash Services PMI , Flash Manufacturing PMI , Public Sector Net Borrowing .
INDIA	WPI Data .				



Narnolia Securities Ltd

124, 1st floor 7/ 1, Lords Sinha Road Kolkata 700071, Ph 033-22821251 Toll Free no : 1-800-345-4000

email: research@narnolia.com,

website : www.narnolia.com

Risk Disclosure & Disclaimer: This report/message is for the personal information of the authorized recipient and does not construe to be any investment, legal or taxation advice to you. Narnolia Securities Ltd. (Hereinafter referred as NSL) is not soliciting any action based upon it. This report/message is not for public distribution and has been furnished to you solely for your information and should not be reproduced or redistributed to any other person in any form. The report/message is based upon publicly available information, findings of our research wing "East wind" & information that we consider reliable, but we do not represent that it is accurate or complete and we do not provide any express or implied warranty of any kind, and also these are subject to change without notice. The recipients of this report should rely on their own investigations, should use their own judgment for taking any investment decisions keeping in mind that past performance is not necessarily a guide to future performance & that the the value of any investment or income are subject to market and other risks. Further it will be safe to assume that NSL and /or its Group or associate Companies, their Directors, affiliates and/or employees may have interests/ positions, financial or otherwise, individually or otherwise in the recommended/mentioned securities/mutual funds/ model funds and other investment products which may be added or disposed including & other mentioned in this report/message.