

SGX NIFTY : 8539 ( 7 Pt Down )

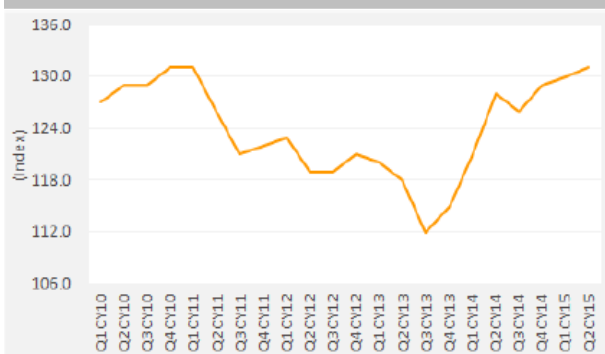
**Quote of the Day**

"Although I consider myself to be primarily in the quantitative school, the really sensational ideas I have had over the years have been heavily weighted toward the qualitative side where I have had a 'high-probability insight'. This is what causes the cash register to really sing."

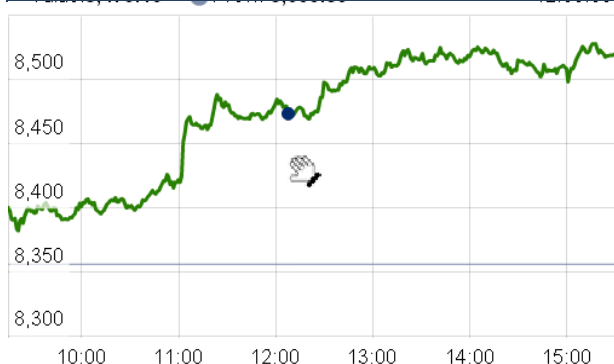
Warren Buffett

**Chart of the Day**

**Consumer Confident Index**



**Index Action Nifty ( 14th Aug 15 )**



**Index**

Contents	Page	Coverage
News	2	Update
Economic Calendar	3	Update

**Market**

Name	Value	Change
Sensex	28,067.31	517.78
Nifty	8518.55	162.70
DOW	17,690.46	(55.52)
NASDAQ	5,048.23	14.67
CAC	4,956.47	(30.38)
DAX	10,985.14	(29.49)
FTSE	6,550.74	(17.59)
NIKKIE	20,519.45	(76.10)
HANG SENG	23,991.03	(27.77)
EW ALL SHARE	14716.17	263.41

**Instituional Turnover**

**FII**

Investor	Buy(Cr.)	Sale(Cr.)	Net(Cr.)
14th Aug,15	4442.23	4038.47	403.76
Aug,15	41758.78	43654.98	(1896.20)
2015	763250.33	742995.32	20255.01

**DII**

Investor	Buy(Cr.)	Sale(Cr.)	Net(Cr.)
14th Aug,15	1591.59	1412.39	179.20
Aug,15	17383.94	15767.11	1616.83
2015	294172.18	266852.81	27319.37

**Commodity Price**

Commodity/Currencies	Value	
GOLD	25768.00	↓
SILVER	65429.00	↓
CRUDEOIL	46.80	↓
COPPER	338.60	↓
NATURALGAS	182.70	↓
DOLLAR/RS.	65.00	↓
EURO/RS.	72.26	↓
POUND/RS.	101.87	↑

## Market Snapshot

### Top Price Performers

Top Performers 1D	% Change	Top Performers 1W	% Change	Top Performers 1M	% Change
ALKYLAMINE	19.98	CHENNPETRO	35.16	GREENFIRE	142.41
HARRMALAYA	19.83	FCSSOFT	33.33	GMBREW	99.12
DLF	18.28	AADHAARVEN	28.57	RUSHIL	96.41
JAYSREETA	16.15	CALSREF	28.57	WINSOMEDJ	80.36
ALICON	15.03	GREENFIRE	26.82	BAJAJTEMPO	73.82

### Worst Price Performers

Worst Performers 1D	% Change	Worst Performers 1W	% Change	Worst Performers 1M	% Change
JYOTISTRUC	(19.91)	JYOTISTRUC	(34.32)	PRITI	(33.61)
SHRGLTR	(13.36)	IOLCP	(27.96)	IOLCP	(34.73)
SPENTEX	(11.98)	PARACABLES	(23.15)	JYOTISTRUC	(36.33)
PANACEABIO	(10.65)	INDOSOLAR	(23.03)	ONELIFECAP	(37.39)
PRAKASHCON	(9.88)	AMTEKINDIA	(22.54)	AMTEKINDIA	(62.16)

## Top News

• **National Buildings Construction Corporation Mgt Guideline :** Company expects 30 percent growth in topline (Rs 6000 crore) and bottomline in FY16. Company expects order inflow to the tune of Rs 2500-3000 crore in the second quarter, while expecting order book to be at Rs 30,000-35,000 crore by this financial year end.

Mgt also adds that margins of project management consultancy (PMC) business will improve from current levels.

• **Tata Global Beverages Ltd** is planning a capex of Rs 150 crore on a consolidated basis in the current fiscal . Mgt said the company would continue to invest in its power brands to stay future-ready. Tetley, Tata Tea, EOC Coffee and Himalayan are the key brands on which the company is focusing . The company is planning to restructure Russian business and the China venture is yet to get stabilised. Instant tea production has stabilised but polypropylene production hasn't and so technically, the operation has not yet stabilised

• **Moil** gets environmental clearance for purchase of land for new mine . Company had applied for mining lease over 53.75 Ha. land in Parsoda village, Tehsil Ramtek, Dist. Nagpur for opening a new mine.

• **Glenmark** has been added to the MSCI Emerging Markets Index, while Indiabulls Housing Finance finds a mention in MSCI ACWI Value Index. Meanwhile, MSCI excluded Jindal Steel from the from MSCI India index. MSCI, a leading provider of research-based indexes and analytics, announced the results of the August 2015 Quarterly Index Review for the MSCI Equity Indexes.

MSCI has said that all changes will reflect from August 31.

• **V-Mart Retail Ltd** has opened a new store located at "Srishty Enclave, Padari Bazar, Opp. Police Chowki, Gorakhpur, (U.P)". The store is spread in an area of 7,000 Sq. Ft. This is the 52nd store in the state of Uttar Pradesh across 40 cities. With this, the Company have increased the tally of the state to 16 Composite & 36 Fashion Stores

• **Finance Ministry** has shortlisted five merchant bankers, including Citibank and Nomura, for disinvestment of 10 percent stake in Indian Oil Corporation (IOC), which could fetch the exchequer about Rs 9,500 crore.

• Government to infuse Rs17.32bn in PNB, Rs17.86bn Bank of Baroda, Rs9.47bn Canara Bank, Rs20.09bn IOB, Rs24.55bn Bank of India, Rs3.94bn Bank of Maharashtra, Rs2.83bn Allahabad Bank, Rs4.07bn Dena Bank

• **July WPI Inflation @ -4.05% Vs -2.4 % ( MoM )** . Primary Article inflation @ -3.66% Vs -0.76% ( MoM ) . Manufacturing Inflation @ -1.47% VS -0.77% ( MoM ) . Food Article Inflation @ -1.16% Vs -2.88% ( MoM ) . Non Foos Article Inflation @ -0.74% Vs -1.06% ( MoM ) . Vegetable Inflation @ -24.52% Vs -7.07% ( MoM ) . Fuel & Power Inflation @ -12.81% Vs -10.83% ( MoM )

• **U.S Bureau of Labor Statistics - Department of Labor said that U.S.** core PPI rose to a seasonally adjusted 0.3%, from 0.3% in the preceding month. Analysts had expected U.S. core PPI to rise 0.1% last month.

• **U.S Bureau of Labor Statistics - Department of Labor said that U.S.** PPI rose to a seasonally adjusted 0.2%, from 0.4% in the preceding month. Analysts had expected U.S. PPI to rise 0.1% last month.

• **Euro zone CPI** remained unchanged at a seasonally adjusted annual rate of 0.2%, from 0.2% in the preceding month. Analysts had expected Euro zone CPI to remain unchanged at 0.2% last month.

• **Italian GDP** rose to 0.2%, from 0.3% in the preceding month. Analysts had expected Italian GDP to rise 0.3% last month.

• **French non-farm payrolls** rose to a seasonally adjusted 0.2%, from 0.0% in the preceding quarter. Analysts had expected French non-farm payrolls to rise 0.1% in the last quarter.

• **U.S. Department of Labor said** the number of individuals filing for initial jobless benefits in the week ending August 8 rose by 5,000 to a seasonally adjusted 274,000 from the previous week's total of 269,000. Analysts had expected initial jobless claims to rise by 1,000 to 270,000 last week.

### Result Calendar Q1FY16

BSE Code	Company Namr	Date	BSE Code	Company Namr	Date
532729	UTTAMSUGAR	19-Aug-15	523519	UNIOFFICE	27-Aug-15
505890	KENNAMET	21-Aug-15	517467	MARSONS	29-Aug-15
517044	IDM	26-Aug-15	524038	VENLONENT	31-Oct-15
521234	SRINACHA	27-Aug-15	511626	RRFIN	14-Dec-15

### Result Q1FY16

NSE Code	BSE Cose	Sales Q1FY16(e)	Sales YOY(%)	Sales Q1FY16(e)	PAT YOY(%)
ANTFRIBEAR	505665	44.22	9.60	1.10	20.88
ABMKNO	531161	19.77	28.40	4.35	7.94
ACROPETAL	533330	8.47	(2.50)	(10.26)	1.30
ADANIENT	512599	11274.79	(31.80)	379.67	(31.80)
ADINATHBI	590088	0.22	(26.70)	0.05	0.00
ABIRLANUVO	500303	6820.47	9.90	396.66	50.40
AEGISCHEM	500003	751.38	(20.90)	25.26	46.20
AKSHOPTFBR	532351	93.28	26.70	11.10	84.39
AKSCHEM	524598	47.90	24.00	3.24	(20.78)
ALEMBICLTD	506235	34.94	6.80	2.56	(19.24)
ALMONDZ	531400	5.52	(83.40)	(4.21)	(135.40)
ANANTRAJ	515055	82.20	15.90	11.83	10.50
ANUHPHR	506260	86.81	15.20	8.02	22.26
APOLLOHOSP	508869	1264.96	20.00	90.84	9.79
APOLLOTYRE	500877	2137.26	(7.30)	227.11	63.33
ARIES	532935	65.85	28.50	2.54	(8.30)
ARNOLD	537069	4.39	84.50	0.42	(2.33)
ASAHISONG	532853	58.02	(28.50)	5.04	19.43
ASHOKLEY	500477	3841.22	55.00	159.32	432.26
ASIANHOTNR	500023	49.94	4.90	(28.67)	(2830.48)
AURIONPRO	532668	164.28	(8.20)	16.49	9.30
AVANCE	512149	21.45	11.70	0.14	40.00
AXIS-IT&T	532395	86.13	19.90	6.19	69.10
BLBLIMITED	532290	22.07	(77.00)	1.10	(78.04)
BSLIMITED	533276	970.33	93.40	23.65	24.00
BALRAMCHIN	500038	636.12	(20.90)	(72.74)	(1736.87)
BASML	532674	176.40	2.20	5.99	(0.17)
BEDMUTHA	533270	101.61	77.50	(6.23)	(286.53)
BHARATRAS	590021	114.86	(2.40)	8.23	(16.28)
BIMETAL	505681	36.75	3.30	1.29	230.77
BINNY	514215	0.01	(99.60)	(4.21)	(428.91)
CHLLTD	532992	12.13	(0.20)	(2.58)	(101.56)
CADILAHC	532321	2500.65	22.00	353.39	47.10
CTE	532801	14.00	109.30	1.20	850.00
CELEBRITY	532695	44.92	(15.60)	(3.20)	(1.59)
COALINDIA	533278	19518.08	6.60	3765.34	(6.60)
DECCANCE	502137	158.76	101.10	13.92	398.07
DHANUKA	507717	180.44	3.20	18.56	(9.24)
DHENUBUILD	501945	2.06	(45.60)	0.01	(50.00)
DOLPHINOFF	522261	47.09	(23.00)	24.00	(1.30)

EMAMIPAP	533208	127.03	(2.60)	3.60	
EMCO	504008	144.37	(14.30)	(7.12)	(882.42)
EMKAY	532737	24.57	(12.00)	2.82	(25.20)
EON	532658	33.82	11.00	(3.42)	(4785.71)
EKC	532684	104.33	3.60	(28.92)	2.40
FULFORD	506803	42.13	(32.60)	(2.00)	(188.50)
FMNL	533296	16.76	9.60	(49.39)	(138.25)
GSS	532951	51.59	(33.10)	0.49	(65.20)
GTLINFRA	532775	153.71	5.40	(196.69)	(25.99)
GLXYENT	506186	16.44	169.10	(0.10)	(150.00)
GINNIFILA	590025	177.11	(17.70)	3.28	(13.68)
GODREJIND	500164	2510.67	7.90	94.32	21.40
GOKUL	532980	402.26	(74.40)	1.63	(22.38)
GOLDENTOBC	500151	12.72	(22.20)	(8.27)	(22.34)
GOODYEAR	500168	432.38	0.00	36.27	25.46
GRAPHITE	509488	322.50	(12.90)	16.33	(40.60)
GESHIP	500620	946.54	17.10	323.67	45.20
GUJFOIL	531410	137.24	33.90	1.83	(48.60)
HBESD	532334	15.52	29.90	(8.96)	0.55
HBPORT	532333	0.55	(24.70)	0.19	(42.42)
HARRMALAYA	500467	62.92	(19.20)	(8.36)	36.33
HITECHGEAR	522073	115.25	15.70	6.59	124.91
HCIL	500184	275.92	(21.50)	(20.06)	(239.69)
HINDMILL	509895	42.49	15.30	0.20	121.28
HINDCOPPER	513599	236.38	(20.40)	14.57	10.38
HOCL	500449	62.22	154.40	(34.37)	16.21
HINDPETRO	500104	51803.26	(12.50)	1588.04	3349.26
HONDAPOWER	522064	152.80	(5.70)	10.87	46.50
IFCI	500106	886.13	22.00	101.54	7.48
IVC	511208	46.35	5.10	15.16	(1.20)
ISTLTD	508807	4.51	(12.10)	0.63	(3.08)
ITI	523610	125.54	29.40	40.73	139.30
INDIACEM	530005	1075.45	(12.90)	40.10	1454.73
INDHOTEL	500850	453.48	14.00	51.08	814.41
INDTERRAIN	533329	56.30	8.80	5.33	95.96
INDOSOLAR	533257	51.18	1275.80	(25.01)	20.02
INSILCO	500211	16.70	4.20	(0.32)	(346.15)
INTLCONV	509709	26.38	25.90	0.39	44.44
JBMA	532605	364.30	(6.30)	17.03	(20.40)
JAMNAAUTO	520051	290.07	23.40	12.82	134.40
JETKINGQ	517063	5.74	(7.70)	0.27	(79.55)
JEYPORE	590054	25.20	(56.10)	(19.42)	(149.77)
JINDALSTEL	532286	4426.32	(5.60)	(339.26)	(181.10)
JUBLINDS	533320	193.32	(9.80)	(11.00)	41.80
JUBILANT	530019	1458.55	(1.00)	128.06	2579.10
KABRAEXTRU	524109	47.72	16.80	0.62	51.22
KAMANWALA	511131	6.99	167.80	(2.72)	(6.25)
KERNEX	532686	5.38	16.70	(3.13)	(125.18)
KOPRAN	524280	43.91	(35.80)	2.58	(14.85)
KOTHARIPRO	530299	1148.65	22.90	16.61	34.39

KOVAL	523323	113.03	22.80	10.14	22.32
KRITIIND	526423	143.84	20.70	6.07	110.76
DAAWAT	532783	475.26	(7.70)	6.37	(38.04)
LINCPENQ	531241	79.19	8.40	3.74	13.68
LOTUSEYE	532998	8.39	7.40	0.79	295.00
MAFATLAIND	500264	372.06	59.30	6.51	68.22
MAX	500271	45.51	(59.30)	24.59	(69.74)
MAXWELL	532613	58.04	(12.80)	8.71	310.85
MOSCHIP	532407	1.02	(15.70)	(1.76)	(43.10)
NCLIND	502168	187.57	61.30	20.34	205.72
NAHARINDUS	519136	432.97	(11.70)	3.91	172.41
NATIONALUM	532234	1491.27	(11.20)	163.44	(39.69)
NFL	523630	1547.14	(28.40)	(12.79)	(170.98)
NATPEROXID	500298	56.41	56.70	2.69	28.10
OIL	533106	2882.64	8.80	775.42	(8.97)
ORBTEXP	512626	43.66	14.70	8.58	36.19
ORIENTLTD	526325	53.00	2.90	0.91	65.45
PGFOILQ	526747	55.67	(9.60)	2.10	(13.58)
PGIL	532808	282.08	18.80	12.18	126.40
PIRPHYTO	532979	0.76	(28.30)	(1.15)	(27.78)
PIXTRANS	500333	50.78	4.70	0.39	(57.61)
PLASTIBLEN	523648	128.06	9.50	10.55	76.13
PODDARDEV	523628	6.77	(87.90)	3.57	(65.00)
PRAKASH	506022	644.34	(20.60)	1.34	(97.98)
PRECWIRE	523539	222.89	(7.00)	4.22	54.01
PREMEXPLQ	526247	37.65	7.10	(1.47)	(372.22)
PROZONECSC	534675	24.41	226.30	0.65	136.30
PUNALKALI	506852	61.37	(19.50)	(0.67)	(126.91)
PUNJABCHEM	506618	66.61	(33.60)	(5.44)	(6900.00)
PUNJCOMMU	500346	4.13	9.80	(2.69)	(1.13)
RAJPALAYAM	532503	91.49	2.90	0.31	(97.04)
RAJGLOWIR	517522	54.84	(13.90)	1.36	(29.53)
REALSTR	513558	65.05	(37.70)	(2.92)	(417.39)
REPRO	532687	116.52	22.70	3.00	(48.45)
RISHILASE	526861	24.63	(15.40)	(3.46)	9.20
SANDESH	526725	92.47	9.70	20.35	52.66
SANGHVIMOV	530073	109.53	90.10	21.09	441.82
SAURASHCEM	502175	129.57	(21.40)	9.25	(41.08)
CLARUS	511672	93.25	(5.00)	0.18	(86.47)
SCHNEIDER	534139	332.77	28.30	(13.61)	65.37
SEAMECLTD	526807	87.83	(23.20)	13.15	(47.17)
SCI	523598	1056.46	(1.20)	163.54	230.45
SHIVTEX	511108	107.51	(6.80)	3.59	(26.73)
RAMANEWS	500356	66.42	(39.10)	(5.30)	63.82
SHRENUJ	523236	1419.96	5.60	21.02	2.50
SHRIRAMEPC	532945	151.35	9.10	(2.79)	94.99
PEERABASAN	511411	43.51	23.40	0.22	(45.00)
STONEIN	522085	25.54	12.20	0.16	130.19
SUBEX	532348	73.51	12.80	(4.75)	76.90

SUNDARAM	533166	33.82	21.90	0.59	116.25
SUPER	512527	53.90	(0.20)	3.20	1554.55
SUPRAJIT	532509	123.39	5.10	12.43	21.51
SUPREMETEX	531934	86.87	(19.00)	(3.37)	36.77
SURATEX	530185	28.15	(34.00)	0.40	(90.07)
SURYAJYOTI	521022	91.72	(13.60)	(2.81)	(11.95)
TVSSRICHAK	509243	503.57	11.70	48.97	183.72
TALBROAUTO	505160	95.89	3.90	2.23	(23.40)
TATAINVEST	501301	18.40	(11.80)	36.53	5.91
THEMISMED	530199	51.53	7.20	4.02	185.11
TRITRADE	512417	20.82	(29.20)	0.02	(71.43)
VJTFEDU	509026	5.12	48.40	0.58	363.64
VLSFINANCE	511333	1238.52	19.00	1.18	(10.61)
VSTILLERS	531266	166.63	6.70	20.84	6.54
VHL	500439	3.24	(0.30)	2.61	(5.09)
VASCONEQ	533156	94.53	24.30	0.34	105.08
VIJAYTX	530151	37.82	34.90	0.70	120.65
VIKASGLOB	530961	58.60	6.70	0.86	(7.53)
VINDHYATEL	517015	204.63	68.00	20.20	263.31
VIPUL	511726	56.57	(24.00)	0.12	(77.78)
VOLTAS	500575	1598.30	(9.10)	110.54	1.40
WELPROJ	532553	20.87	(53.60)	2.97	121.64
WSTCSTPAPR	500444	393.04	(0.20)	(23.91)	(333.04)
ZICOM	531404	257.39	16.60	10.17	17.80
ZODIACLOTH	521163	87.09	(11.90)	(5.34)	(232.50)

### Economic Calendar

Country	Monday 17th Aug 15	Tuesday 18th Aug 15	Wednesday 19th Aug 15	Thursday 20th Aug 15	Friday 21th Aug 15
US	NAHB Housing Market Index , Empire State Manufacturing Index	Building Permits ,Housing Starts .	CPI m/m , Core CPI m/m , Crude Oil Inventories , FOMC Meeting Minutes .	Unemployment Claims , Flash Manufacturing PMI , Philly Fed Manufacturing Index , Existing Home Sales , CB Leading Index m/m , Natural Gas Storage .	Flash Services PMI .
UK/EURO ZONE	Trade Balance , German Buba Monthly Report .	CPI y/y ,PPI Input m/m ,RPI y/y , Core CPI y/y , HPI y/y .	Current Account , Consumer Confidence ,	French Flash Manufacturing PMI ,French Flash Services PMI , German Flash Manufacturing PMI , German Flash Services PMI , Flash Manufacturing PMI , Flash Services PMI , Retail Sales m/m , Public Sector Net Borrowing .	
INDIA					



(Regn. No. : INP 000004011)

## **Narnolia Securities Ltd.**

### **Narnolia Research Lab**

Stellar IT Park | 5th Floor | Office Space No. 6 | Tower-II Ind Plot No. C-25 |  
Sector-62 | Noida | Ph : 0120-4215110

### **Central Strategy Desk - Kolkata**

124 | 1st Floor | 7/1 Lords Sinha Road | Kolkata - 71  
Ph : 033-22821500 | M : 93347 14418, 98302 69810