

SGX NIFTY : 8641 ( 19 Pt Down)

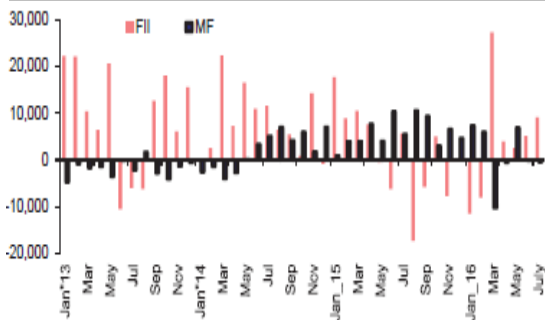
### Quote of the Day

"If you understood a business perfectly and the future of the business, you would need very little in the way of a margin of safety. So, the more vulnerable the business is, assuming you still want to invest in it, the larger margin of safety you'd need. If you're driving a truck across a bridge that says it holds 10,000 pounds and you've got a 9,800 pound vehicle, if the bridge is 6 inches above the crevice it covers, you may feel okay, but if it's over the Grand Canyon, you may feel you want a little larger margin of safety..."

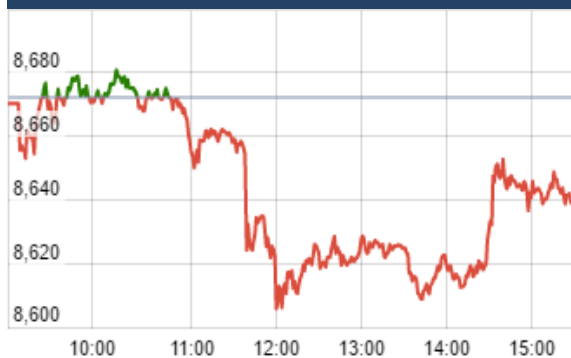
Warren Buffett

### Chart of the Day

FII & MF Investment Trend



### Index Action Nifty ( 10th Aug 16 )



### Index

Contents	Page	Coverage
News	2	Update
Economic Calendar	3	Update

### Market

Name	Value	Change
Sensex	28,064.00	(87.00)
Nifty	8642.00	(29.00)
DOW	18,587.00	(20.00)
NASDAQ	5,227.00	(34.00)
CAC	4,460.00	(37.00)
DAX	10,676.00	(62.00)
FTSE	6,893.00	(47.00)
NIKKIE	16,679.00	83.00
HANG SENG	23,007.00	96.61
EW ALL SHARE	15221.00	(4.25)

### Instituional Turnover

#### FII

Investor	Buy(Cr.)	Sale(Cr.)	Net(Cr.)
16-Aug-16	5754.75	4551.04	1203.71
Aug,16	26278.12	22625.40	3652.72
2016	623559.73	604614.78	18944.95

#### DII

Investor	Buy(Cr.)	Sale(Cr.)	Net(Cr.)
16-Aug-16	1908.44	2300.91	(392.47)
Aug,16	9847.86	12459.73	(2611.87)
2016	259179.19	257067.06	2112.13

### Commodity Price

Commodity/Currencies	Value	
GOLD	31220.00	↑
SILVER	46088.00	↑
CRUDEOIL	45.63	↑
COPPER	317.10	↑
NATURALGAS	173.60	↑
DOLLAR/RS.	66.89	↓
EURO/RS.	74.77	↑
POUND/RS.	86.10	↓

## Market Snapshot

### Top Price Performers

Top Performers 1D	% Change	Top Performers 1W	% Change	Top Performers 1M	% Change
BIRLAMONEY	20.00	ELECTHERM	35.37	SAHARAHOUS	123.11
GREENFIRE	16.91	STOREONE	34.33	PARABDRUGS	87.59
GITANJALI	16.33	APTECHT	32.17	JINDCOT	74.56
STOREONE	13.61	20MICRONS	32.03	RPGLIFE	70.38
APTECHT	11.20	PRAKASHCON	27.08	LAKSHMIEFL	66.74

Worst Performers 1D	% Change	Worst Performers 1W	% Change	Worst Performers 1M	% Change
DALMIASUG	(19.40)	DWARKESH	(22.92)	LLOYDSTEEL	(45.33)
UPERGANGES	(13.40)	CALSREF	(22.22)	YBRANTDIGI	(37.15)
GALLANTT	(12.71)	DALMIASUG	(21.48)	PRATIBHA	(34.99)
CALSREF	(12.50)	UGARSUGAR	(18.43)	BSLIMITED	(34.58)
STEERINTER	(11.43)	DCMSRMIND	(18.43)	TRICOM	(34.17)

### Top News

- Jindal Saw** Steel price dip, altered contract structure hit sales. Softening steel prices and changes in contracts in accounting for pass-through of raw material costs led to the over 30-percent year-on-year decline in Jindal Saw. expects revenue for the coming quarters to remain relatively lower than last year but profitability is seen improving.

#### • IPCAB CONCALL UPDATE:

- Gross Margins for 2QFY17 is likely to grow by 2 % from 62.8% to 65 %
- Employee benefit expenses has grown in this quarter due to the higher incentives paid in this quarter and higher provisions are made for bonus
- Domestic formulation market will probably grow at 12% in 2QFY17
- Guidance for the sales growth in 2QFY17 is 11-12%
- Guidance for EBITDA margin for 2QFY17 is 16-16.5%
- Sales of domestic Anti-malarial will increase in 2QFY17
- Dermatology and Urology business is growing at the rate of 20-25%
- Exports of API business is up by 9% in 1QFY17 , and the guidance for 2QFY17 is 12%
- Quantum of Remediation and consultation cost is \$ 8 Million for FY17
- Capex guidance for FY17 is 50 Cr and maintenance capex is around 150 Cr in FY17
- Overall API business will grow at the rate of 10-12% in FY17
- Total debt repayment in FY17 is around \$30 mn
- Tax rate will be equivalent to MAT rate in FY17

- RPP Infra** Aiming for Rs 410 crore revenue in coming quarters. the total order book of the company is Rs 830 crore of which 40 percent is for road projects. The company has guided for 14-16 percent margins for FY17 and there is revenue target of Rs 410 crore in coming quarters.

- Sanghi Ind** Net debt of Rs 400 crore payable over next 3-4 years. On the pure cement volume, we have achieved a growth of almost 10 percent from 6,02,000 tonne to 6,63,000 tonne, which has helped margins also.

- NMDC** aims to increase its sales by 21 percent to 35 million tonnes (MT) in the current fiscal. Company envisages raising iron ore production by 24 percent to 35 MT in 2016-17 from 28.32 MT in 2015-16

- Swiss PPI fell** to a seasonally adjusted -0.1%, from 0.1% in the preceding month. Analysts had expected Swiss PPI to fall -0.2% last month.

- Indonesian Trade Balance** fell to a seasonally adjusted 0.59B, from 0.90B in the preceding month. Analysts had expected Indonesian Trade Balance to fall to 0.80B last month.

- Thailand said that Thai GDP** rose to a seasonally adjusted 3.5%, from 3.2% in the preceding month . Analysts had expected Thai GDP to remain unchanged at 3.2% last month.

Result Calendar Q1FY17					
BSE Code	Company Name	Result Date	BSE Code	Company Name	Result Date
535648	JUSTDIAL	16-Aug-16	500400	TATAPOWER	23-Aug-16
502165	OCL	16-Aug-16	519191	JOLYMER	25-Aug-16
532898	POWERGRID	16-Aug-16	506943	JBCHEPHARM	26-Aug-16
506590	PHILIPCARB	17-Aug-16	500459	PGHH	26-Aug-16
532497	RADICO	17-Aug-16	532240	INDNIPPON	27-Aug-16
530005	INDIACEM	18-Aug-16	500207	INDORAMA	27-Aug-16
532349	TCI	18-Aug-16	526961	TRANSFIN	27-Aug-16
532026	THEWEST	18-Aug-16	532927	ECLERX	29-Aug-16
513428	TRINETRA	18-Aug-16	532181	GMDCLTD	29-Aug-16
523630	NFL	19-Aug-16	532150	INDRAMEDCO	30-Aug-16
509243	TVSSRICHAK	20-Aug-16	535755	ABFRL	31-Aug-16
513599	HINDCOPPER	22-Aug-16	534742	ZUARI	08-Sep-16
507815	GILLETTE	23-Aug-16	500780	ZUARIGLOB	08-Sep-16
521016	ICIL	23-Aug-16	522113	TIMKEN	09-Sep-16
512237	JAICORPLTD	23-Aug-16	524038	VENLONENT	28-Oct-16

Economic Calendar					
Country	Monday 15th Aug 16	Tuesday 16th Aug 16	Wednesday 17th Aug 16	Thursday 18th Aug 16	Friday 19th Aug 16
US	Empire State Manufacturing Index , NAHB Housing Market Index , TIC Long-Term Purchases.	Building Permits , CPI m/m , Core CPI m/m , Housing Starts , Capacity Utilization Rate , Industrial Production m/m.	Crude Oil Inventories , FOMC Member Bullard Speaks , FOMC Meeting Minutes.	Philly Fed Manufacturing Index , Unemployment Claims , CB Leading Index m/m , FOMC Member Dudley Speaks.	
UK/EURO ZONE	German Buba Monthly Report	German ZEW Economic Sentiment , ZEW Economic Sentiment , Trade Balance.	Average Earnings Index 3m/y , Claimant Count Change , Unemployment Rate ,.	Current Account , Retail Sales m/m , Final CPI y/y , ECB Monetary Policy Meeting Accounts.	German PPI m/m , Public Sector Net Borrowing .
INDIA		WPI			



(Regn. No. : INP 00004011)

---

### **Narnolia Securities Ltd.**

#### **Narnolia Research Lab**

Stellar IT Park | 5th Floor | Office Space No. 6 | Tower-IIInd Plot  
No. C-25 | Sector-62 | Noida | Ph : 0120-4215110

#### **Narnolia Securities Ltd.**

201 | 2nd Floor | Marble Arch Building | 236B-AJC Bose Road Kolkata-  
700 020 Ph : 033-40501500  
Email : [narnolia@narnolia.com](mailto:narnolia@narnolia.com) website : [www.narnolia.com](http://www.narnolia.com)

