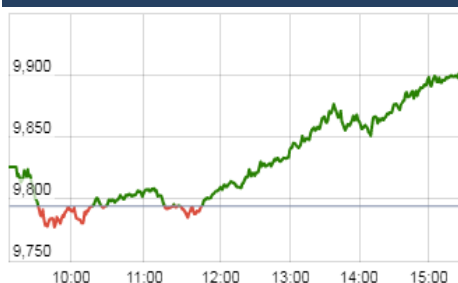


### KEY LEVELS

Support 1 : 9646

Resistance 1 : 9874  
Resistance 2: 9960

### Nifty Intraday Chart



### Market Outlook

Last week saw sharp long unwinding in the market. In particular, market breadth deteriorated sharply. While Nifty saw a fall of mere 3%, Mid Cap Index saw fall of 6% and Small Cap Index fell by 9%. Mid cap and small cap index got closed to lows made in the month of May.

In the meanwhile global market too saw sharp losses and most of the global market now has broken below their immediate support. Though this is a much-awaited correction in equity markets as valuation has got stretched and the risk-reward ratio was not favorable for bulls. On a long term basis, this fall provides another opportunity for those who missed out earlier to participate in this structural bull market in India. Fundamentally, the market would like to see a clearer sign of better earnings for corporate in the 2nd half of FY18 before resuming its next leg upward.

### Market

Market	Value	% Change
<b>Morning Traded Market</b>		
SGX NIFTY	9,894.00	-0.14%
NIKKIE	19689.64	-0.20%
HANG SENG	27,402.00	-0.02%
<b>Yesterday Closing Market</b>		
Sensex	31,770.89	1.02%
Nifty	9,897.30	1.05%
DOW	22,054.00	0.12%
NASDAQ	6,345.11	0.19%
CAC	5,176.61	0.70%
DAX	12,263.86	0.71%
FTSE	7,433.03	0.66%
EW ALL SHARE	17,853.61	1.05%

% Change in 1 day

### Commodity Price ( Yesterday Closing )

Commodity/Currencies	Value	% Change
GOLD	28952.00	-0.44%
SILVER	38863.00	-0.80%
CRUDEOIL	50.48	0.42%
NATURALGAS	186.20	-1.64%
DOLLAR/RS.	64.15	0.04%
EURO/RS.	75.08	-0.74%
POUND/RS.	82.52	-0.05%

% Change in 1 day

### Institutional Turnover

FII			
Investor	Buy(Cr.)	Sale(Cr.)	Net(Cr.)
16-Aug-17	5400	6490	(1090)
Aug-17	48787	55433	(6646)
2017	802539	785367	17173
DII			
Investor	Buy(Cr.)	Sale(Cr.)	Net(Cr.)
16-Aug-17	3570	2233	1337
Aug-17	43320	32688	10632
2017	480679	444870	35809

### Event Today

#### Today Result

DISHTV , SOMANYCERA  
NIPPOBATTERY , VIMTALABS

#### Concall

Globus Spirits : 11:00 AM  
Ujaas Energy : 11:00 AM  
Vivimed Labs : 11:00 AM  
Power Finance : 11 : 30 AM  
PNC Infratech : 12:30 PM  
Nandan Denim : 2:00 PM  
Time Techno : 4:00 PM  
HPL Electric and Power : 4:00 PM

**Quote of the Day** : " Develop into a lifelong self-learner through voracious reading; cultivate curiosity and strive to become a little wiser every day ." **Charlie Munger**

**KNRCON**

"NEUTRAL"

17th Aug 2017

KNRCON is one of the fastest growing companies in Engineering and Procurement segment. KNRCON has posted yet another quarter with strong set of numbers. Revenue was up by the 58% YoY coupled with strong operating margin. Slow progress in land acquisition and GST resulted into subdued awarding activity. KNRCON had not received any new order in last twelve months time period. Subsequently, the revenue visibility has come down from 4.1x to 1.96x of TTM revenue. Though we expect healthy revenue growth of 24% in FY18 but growth in FY19 will be negative based on the current order book position. However, management expects to receive Rs.2000-2500 Cr of new orders in FY18 but any delay in order intake may cause greater risk to future earnings of the company. Considering the lower revenue visibility we change our rating from "BUY" to "NETURAL" with target price 230.

**DBL**

"HOLD"

16th Aug 2017

Dilip Buildcon is one of the best EPC Company in Engineering and Construction with strong execution capabilities. DBL continue to outpace other major players in the industry in terms of top line and bottom line growth. During the quarter it has posted 59% and 128% growth in sales and PAT respectively. Improvement in working capital (WC days down from 129 days to 104 days QoQ) and strong execution boosted the bottom line. Till date this quarter DBL did not receive any new orders expect small order of Rs.125 Cr, which drag down the revenue visibilities from 3.4x to 2.7x of TTM. However we expect at least Rs.6000-8000 Cr of new orders in FY18. We expect 23% and 17% revenue growth in FY18 and FY19 respective based on the current order book. DBL is in final stage to close the deal to monetize operating asset and equity arrangement for the upcoming HAM projects. Cash inflow from sale of assets will be used to repay some of the debt. Reduced revenue visibility gives us limited upside at the current valuation. Hence, we maintain our "HOLD" rating on the stock with target price of Rs. 595

\*For details, refer to our daily report- *India Equity Analytics***Top News****Dishman concall highlights:**

- Successfully completed new merger with Dishman carbogenics.
- Company has completed all procedural filing with the BSE & NSE and expects re-listing on stock exchange in few days.
- Company has healthy order book across all business segments.
- Revenue is impacted due to rupee appreciation and deferment from one client due to which Rs.22 cr is impacted in each quarter.
- Forex loss of Rs.11 Cr in Q1FY18.
- 20 molecules are in phase-III , 110 in pre-clinical and 150 in phase -I of studies.
- Management expects USFDA inspection on Unit-9 at any point of time (in next 3-6 months).Unit -9 produces hypo-toxic products and oncology products.
- Revenue guidance for CRAMS business is 10-15% and in growth in generic segment is 5-10% in FY18.
- 1-3 molecules to be commercialized in FY18.
- Tax rate of 26-27% in FY18.

**Larsen & Toubro Limited** has entered into definitive agreement for the divestment of its entire stake in L&T Cutting Tools Limited, a wholly owned subsidiary, with IMC International Metalworking Companies B.V, a company owned by Berkshire Hathaway Inc.

**Granules India** said the US health regulator has issued establishment inspection report for its Gagillapur plant in Hyderabad without any observations.

**Biocon** has requested for withdrawal of the dossiers for biosimilars - Trastuzumab and Pegfilgrastim - as part of the procedural requirements for re-inspection by the European regulator EMA.

**Granules concall update:**

- Full affect of launch of Paracetamol will be visible from Q4.
- Q1 is affected by forex loss.
- Company didn't face pricing pressure in US market due to product mix and efficient in pricing.
- Expanded capacities and PFI capacities coming on stream will be the key growth drivers for FY18 & 19.
- Company did not witness any significant impact of GST on the business.
- Gross R&D exp for Q1FY18 is Rs. 5Cr and guidance for FY18 is Rs. 25 Cr.

**BLUESTAR Concall Highlight (1QFY18)**

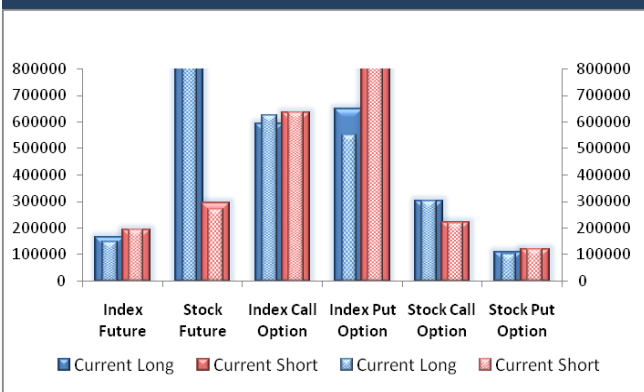
- >>Room AC segment grew by 7% in value terms Market remain flat
- >>VRF grew by 24% while market grew by 15%
- >>Investment in Water purifier will affect the margin by 100-150 bps.
- >>Water Purifier is now in 100 town,400 channel partner ,1500 retail point
- >>Bluestar to enter Egypt Market
- >>Commercial Refrigeration & VRF aircon have driven the growth in 1qfy18
- >>Energy efficient Systems like Inverter AC & 5 Star rated ac contribute 40 % in unitary product.
- >>Inverter is 25% can go upto 35 to 40 % in fy18
- >>No price hike due to gst, price hike post Q4 due to commodity prices
- >>Growth will be 10% for fy18 ,15% for unitary product,15% in E&p
- >>Margin 11% for 1QFY18 , 12 % For entire year FY18
- >>Margin for E&p will be 4.5% to 5%,Order Book to grow 20-25%

## Block Deal

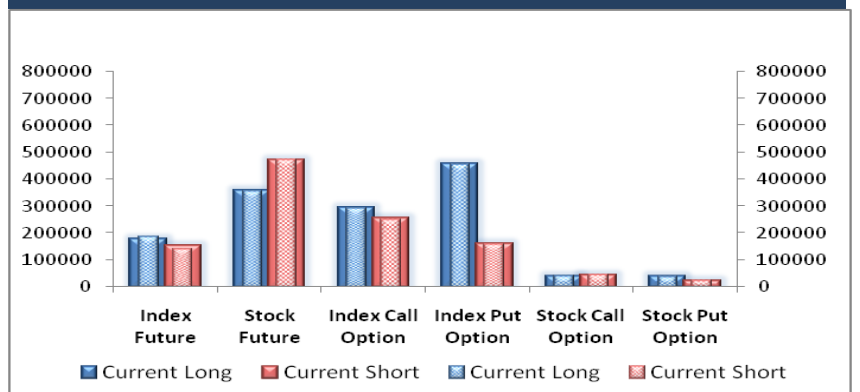
Exchange	Deal Date	Company	Client Name	Deal Type	Quantity	Price
NSE	16-Aug-17	AUTOIND	NAISHADH VINODBHAI SADARIYA	BUY	85988	83
NSE	16-Aug-17	JPASSOCIAT	SHAASTRA SECURITIES TRADING PRIVATE LIMITED	BUY	15657889	24
NSE	16-Aug-17	MBLINFRA	PEARL BROKING SERVICES LIMITED	BUY	235424	24
NSE	16-Aug-17	SINTEX	ADROIT FINANCIAL SERVICES PRIVATE LIMITED	BUY	3432615	33
NSE	16-Aug-17	SINTEX	MORGAN STANLEY FRANCE SAS	BUY	3180144	33
NSE	16-Aug-17	SINTEX	RUSSELL INVESTMENT COMPANY PLC - THE PACIFIC BASI	BUY	3443624	33
NSE	16-Aug-17	SINTEX	SHAASTRA SECURITIES TRADING PRIVATE LIMITED	BUY	3669036	33
NSE	16-Aug-17	AKASH	MAHENDRABHAI GULABDAS PATEL	SELL	100000	78
NSE	16-Aug-17	AUTOIND	NAISHADH VINODBHAI SADARIYA	SELL	85988	83
NSE	16-Aug-17	JPASSOCIAT	SHAASTRA SECURITIES TRADING PRIVATE LIMITED	SELL	15657889	24
NSE	16-Aug-17	MBLINFRA	PEARL BROKING SERVICES LIMITED	SELL	235424	25
NSE	16-Aug-17	ORIENTALTTL	SARITA PATRO	SELL	75938	9
NSE	16-Aug-17	SINTEX	ADROIT FINANCIAL SERVICES PRIVATE LIMITED	SELL	3458125	33
NSE	16-Aug-17	SINTEX	SHAASTRA SECURITIES TRADING PRIVATE LIMITED	SELL	3669036	33
NSE	16-Aug-17	WEBELSOLAR	MANGAL SAVITRI BIZCON PRIVATE LIMITED	SELL	141695	113

## F&O OPEN INTEREST ( Number of Contracts )

### Individual

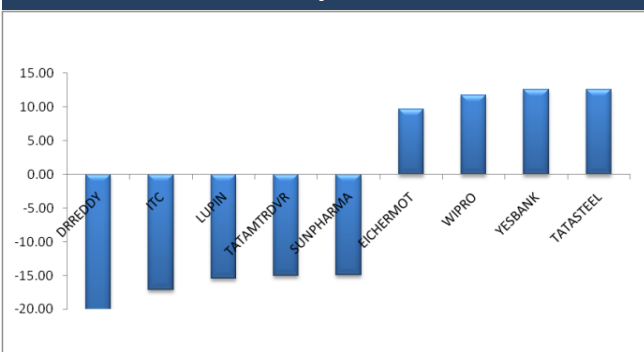


### Foreign Institutions

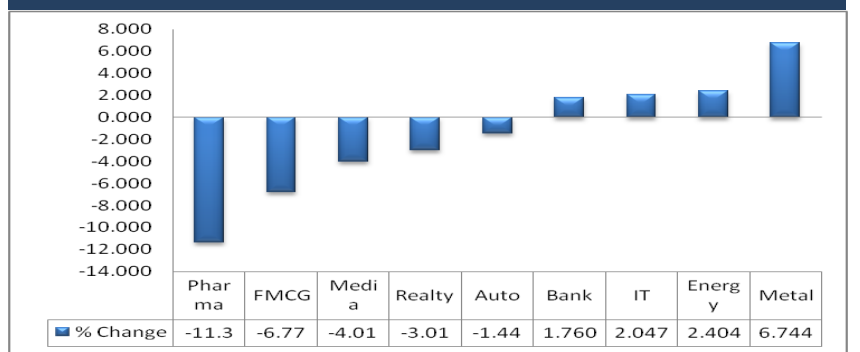


## MARKET MOVERS (1 MONTH CHANGE)

### Nifty Movers



### NSE Sectoral Indices Performance



**Result Calendar Q1FY18**

Bse Code	Company Name	Date	Bse Code	Company Name	Date
506767	ALKYLAMINE	17-Aug-17	513532	PRADPME	21-Aug-17
523694	APCOTEXIND	17-Aug-17	532988	RANEENGINE	21-Aug-17
532839	DISHTV	17-Aug-17	504345	SAMLEPU	21-Aug-17
526783	DRAGARWQ	17-Aug-17	540497	SCHAND	21-Aug-17
540596	ERIS	17-Aug-17	512289	SHIRPUR-G	21-Aug-17
504269	KHAITANELE	17-Aug-17	505515	SHYMINV	21-Aug-17
504058	NIPPOBATRY	17-Aug-17	511726	VIPUL	21-Aug-17
513519	PITTILAM	17-Aug-17	503675	WAGEND	21-Aug-17
500346	PUNJCOMMU	17-Aug-17	517498	WEBELSOLAR	21-Aug-17
505817	REILELEC	17-Aug-17	523031	ADSDIAG	22-Aug-17
531548	SOMANYCERA	17-Aug-17	532811	AHLUCONT	22-Aug-17
530821	SSPDL	17-Aug-17	534804	CARERATING	22-Aug-17
538987	TALBROSENG	17-Aug-17	523369	DCMSRMIND	22-Aug-17
532398	UMESLTD	17-Aug-17	500246	ENVAIREL	22-Aug-17
524394	VIMTALABS	17-Aug-17	532345	GATI	22-Aug-17
524348	AARTIDRUGS	18-Aug-17	504786	INVPRECQ	22-Aug-17
514060	EVERTEX	18-Aug-17	507794	KHAICHEM	22-Aug-17
524164	IOLCP	18-Aug-17	532097	MUKANDENGG	22-Aug-17
538964	MERCURYLAB	18-Aug-17	500460	MUKANDLTD	22-Aug-17
500890	MODIRUBBER	18-Aug-17	540293	PRICOLLTD	22-Aug-17
538836	MONTECARLO	18-Aug-17	531240	SHAMROIN	22-Aug-17
538742	PANACHE	18-Aug-17	500870	CASTROLIND	23-Aug-17
526043	POLYCHMP	18-Aug-17	522165	INDSILHYD	23-Aug-17
500192	PRAGBOS	18-Aug-17	502901	JAMSHRI	23-Aug-17
526247	PREMEXPLQ	18-Aug-17	502958	LAKSHMIMIL	23-Aug-17
533284	RPPINFRA	18-Aug-17	500459	PGHH	23-Aug-17
532005	SAMINDUS	18-Aug-17	539113	PML	23-Aug-17
539010	SMADL	18-Aug-17	504341	RAVINDT	23-Aug-17
533110	SPSL	18-Aug-17	532987	RBL	23-Aug-17
537259	SUYOG	18-Aug-17	505160	TALBROAUTO	23-Aug-17
532845	TGBHOTELS	18-Aug-17	537524	VIAANINDUS	23-Aug-17
534976	VMART	18-Aug-17	503960	BBL	24-Aug-17
504356	ZMULTIPU	18-Aug-17	507815	GILLETTE	24-Aug-17
539506	ADCON	19-Aug-17	500170	GTNINDS	24-Aug-17
530871	CHEMBOND	19-Aug-17	505893	HINDHARD	24-Aug-17
517571	INDLMETER	19-Aug-17	505890	KENNAMET	24-Aug-17
531280	PANKAJPO	19-Aug-17	532661	RML	24-Aug-17
532373	WEPSOLN	19-Aug-17	506079	LAKPRE	25-Aug-17
539528	AAYUSH	21-Aug-17	530201	KALLAM	26-Aug-17
532392	CREATIVEYE	21-Aug-17	507598	KLRF	26-Aug-17
504369	GRANDMA	21-Aug-17	526947	LAOPALA	26-Aug-17
532001	INDCTST	21-Aug-17	526481	PHOENXINTL	26-Aug-17
516007	MANGTIMBER	21-Aug-17	526009	PROCAL	26-Aug-17
538874	NEXUSCOMMO	21-Aug-17	524774	NGLFINE	28-Aug-17
504378	NYSSACORP	21-Aug-17	500354	RAJSREESUG	28-Aug-17
531157	ORGOAT	21-Aug-17	526133	SUPERTEX	28-Aug-17

521200	SURYALAXMI	28-Aug-17	509449	BHAGWOX	12-Sep-17
530151	VIJAYTX	28-Aug-17	530077	FRSHTRP	12-Sep-17
506405	DHARAMSI	29-Aug-17	526931	HRYNSHP	12-Sep-17
538902	DHUNTEAIND	29-Aug-17	523550	KRYPTONQ	12-Sep-17
517041	ADORWELD	30-Aug-17	532808	PGIL	12-Sep-17
522245	IYKOTHITE	30-Aug-17	500333	PIXTRANS	12-Sep-17
590066	KCP	31-Aug-17	532435	SANINFRA	12-Sep-17
505800	RANEHOLDIN	31-Aug-17	539255	STARDELTA	12-Sep-17
505978	TRITONV	31-Aug-17	526071	STELLANT	12-Sep-17
533146	DLINKINDIA	01-Sep-17	506120	ALNATRD	13-Sep-17
501151	KARTKIN	01-Sep-17	512519	DONEAR	13-Sep-17
517496	RICOHQ	01-Sep-17	539206	GVBL	13-Sep-17
500211	INSILCO	05-Sep-17	526588	PHOTOQUP	13-Sep-17
521234	SRINACHA	06-Sep-17	530125	SAMRATPH	13-Sep-17
516016	SHREYANIND	07-Sep-17	531628	STERSPN	13-Sep-17
526662	ARENTERP	08-Sep-17	530533	TERAI	13-Sep-17
531413	KIRANPR	08-Sep-17	517544	CENTUM	14-Sep-17
539006	PTCIL	08-Sep-17	505526	DOLAT	14-Sep-17
511447	SYLPH	08-Sep-17	523840	INNOVTEC	14-Sep-17
524695	ASIANFR	09-Sep-17	533103	JINDCOT	14-Sep-17
531953	GCCL	09-Sep-17	505693	LATIMMETAL	14-Sep-17
514142	TTL	09-Sep-17	500267	MAJESAUT	14-Sep-17
522261	DOLPHINOFF	11-Sep-17	531996	ODYCORP	14-Sep-17
512597	KEYCORPSE	11-Sep-17	511632	OLYMTFI	14-Sep-17
532081	KSERASERA	11-Sep-17	500371	SAMTELIN	14-Sep-17
517397	PANELEC	11-Sep-17	531569	SANJIVIN	14-Sep-17
505729	SINGER	11-Sep-17	513472	SIMPLEXCAS	14-Sep-17
526839	SIPL	11-Sep-17	531411	TUNITEX	14-Sep-17
500414	TIMEX	11-Sep-17	539123	VBIND	14-Sep-17
513397	VALLABHSQ	11-Sep-17	530675	YORKEXP	14-Sep-17
513534	VARDHINDQ	11-Sep-17	505502	PSITINFRA	15-Sep-17
517096	APLAB	12-Sep-17			

### Earning Estimate Q1FY18

DATE	NSE code	Sales	sales Growth	PAT	PAT Growth
17-Aug-17	DISHTV	718.20	(7.70)	(1.30)	PL
23-Aug-17	CASTROL	935.70	(3.30)	193.20	(6.60)

### Result Q1FY18

Bse Code	NSE code	Sales	sales Growth	PAT	PAT Growth
590006	AMRUTANJAN	32.02	(6.65)	(1.51)	(171.56)
500335	BIRLACORPN	966.18	6.57	27.80	(70.53)
500117	DCW	290.23	2.18	(18.07)	(1727.93)
500300	GRASIM	9845.92	8.37	1248.10	9.48
500032	BAJAJHIND	1650.95	30.41	(25.08)	(67.59)
500710	AKZOINDIA	707.03	1.47	41.27	(35.78)
509162	INDAG	34.42	(29.34)	1.52	(76.18)
500223	JCT	167.33	(16.92)	(14.20)	(686.78)

504076	JYOTI	113.22	55.65	(12.85)	(26.36)
509243	TVSSRICHAK	539.25	5.36	17.84	(61.64)
500400	TATAPOWER	6968.62	1.91	163.78	125.93
508869	APOLLOHOSP	1684.46	14.95	35.21	(51.21)
500163	GODFRYPHLP	491.94	5.66	(3.14)	(114.03)
505355	NESCO	64.93	10.13	41.69	16.26
507960	GUJHOTE	0.74	4.23	0.89	14.10
500296	NAHARSPING	488.21	(9.66)	(20.01)	(233.40)
500439	VHL	3.91	(46.22)	2.63	(61.32)
520057	SONASTEER	293.18	11.93	5.63	178.71
524051	Polyplex Corpn	816.38	3.48	14.87	(69.41)
513228	PENIND	427.57	39.41	10.69	37.76
520051	JAMNAAUTO	271.37	(18.55)	17.41	(35.95)
524091	ACRYSIL	46.73	(4.24)	3.68	18.33
500207	INDORAMA	593.44	(8.30)	(15.57)	(5.98)
507442	DHARSUGAR	147.17	77.85	1.08	(110.59)
511108	SHIVTEX	122.72	3.15	6.03	41.55
517224	SUJANAUNI	52.24	(70.89)	(48.39)	40.38
508954	FINKURVE	3.60	48.76	0.52	477.78
512299	STERLINBIO	94.82	(0.06)	(109.50)	25.09
500366	ROLTA	723.88	(9.56)	32.91	42.16
523391	NAHARPOLY	59.94	(12.73)	0.06	(98.45)
533033	SARASIND	494.44	(26.07)	16.92	(59.77)
500265	MAHSEAMLES	448.48	55.88	37.25	55.86
514167	GANECOS	193.20	26.40	8.85	49.24
500108	MTNL	657.22	(11.75)	(703.17)	(2.07)
513683	NEYVELILIG	2254.00	19.78	316.09	36.98
513359	PARINFRA	0.21	31.25	0.03	(40.00)
523642	PIIND	553.17	(13.42)	100.14	(21.06)
522122	PORRITSPEN	22.04	18.75	4.07	2.26
500013	ANSALAPI	259.25	34.38	(6.55)	(485.29)
590005	TIDEWATER	218.06	(10.50)	16.29	(40.76)
521064	TRIDENT	1168.38	1.76	88.94	13.37
523023	SINCLAIR	15.61	15.29	6.85	107.58
500213	INTLTRAVHS	51.46	1.76	3.03	10.58
513414	SMPL	141.33	(55.39)	(112.22)	221.92
526235	MERCATOR	301.37	(48.41)	(28.70)	(229.92)
519307	VIKASWSP	138.70	790.24	5.33	(136.06)
513566	NOVAIRSTL	5.59	(81.10)	(1.00)	(119.38)
511505	CAPITALT	35.73	80.82	(11.36)	(224.56)
513597	SURANAIND	14.66	53.67	(60.37)	6.98
513599	HINDCOPPER	367.07	78.20	10.21	(454.51)
500227	JINDALPOLY	1816.10	2.14	37.62	(62.16)
512599	ADANIENT	8778.51	(1.57)	141.15	(61.77)
526666	BIL	107.75	7.26	3.85	17.02
520151	SHREYAS	117.86	38.48	19.17	293.63
515145	HINDNATGLS	458.61	(9.23)	(66.91)	218.01
524820	PANAMAPET	276.33	51.21	14.54	56.34

511768	MASTERTR	1.20	(20.00)	0.16	45.45
530363	UGARSUGAR	105.08	(10.00)	(24.22)	(1293.10)
530695	PRIMEPRO	2.28	(94.50)	0.93	(94.42)
519570	LAKSHMIEFL	128.17	(52.06)	9.09	(50.19)
531102	SURANACORP	77.69	(5.01)	(74.44)	10.84
509051	INDINFO	1.95	(63.28)	(0.68)	(115.74)
511533	SAHARAHOUS	3.29	1.86	0.87	81.25
532868	DLF	2047.70	9.65	109.01	(58.37)
504351	EMPOWER	12.90	(45.04)	0.05	(70.59)
532189	INDTODE	87.51	1.07	18.75	99.04
532221	SONATSOFTW	634.53	4.12	43.16	(0.83)
531768	POLYMED	107.40	4.79	12.02	(4.68)
531934	SUPREMETEX	88.52	(11.08)	(35.80)	226.05
531830	TODAYS	2.76	(71.07)	(4.28)	21.94
531795	ATULAUTO	115.53	24.96	7.81	61.70
532351	AKSHOPTFBR	115.39	6.45	2.18	(79.22)
531831	UNISH	98.90	(31.84)	0.38	(47.95)
533208	EMAMIPAP	278.30	10.06	2.58	(58.12)
531978	AMBIKCO	137.73	9.68	14.43	15.07
532644	JKCEMENT	1041.47	16.35	79.34	30.39
533012	LPDC	0.58	(13.43)	0.21	(4.55)
532972	SANKHYAIN	43.52	5.10	1.55	19.23
532921	ADANIPOINTS	2745.14	50.29	710.25	(13.65)
532710	SADBHAV	944.35	17.02	55.48	13.97
532456	COMPUAGE	752.56	9.74	3.84	13.61
506142	VYAPAR	0.63	31.25	(0.05)	(225.00)
532670	RENUKA	1592.10	(0.72)	(92.20)	(2981.25)
532649	NECLIFE	317.77	(10.28)	10.39	(15.53)
509053	BANASFN	0.14	(91.03)	0.48	166.67
532780	PARSVNATH	49.46	(42.93)	(26.06)	(669.00)
532527	RKFORGE	257.61	18.47	9.08	71.97
532674	BASML	211.03	3.96	6.12	27.77
532660	VIVIMEDLAB	317.97	(13.32)	23.90	(13.44)
532734	GPIL	557.73	35.94	6.84	(121.71)
532718	PRATIBHA	402.02	(42.14)	(418.78)	1288.99
532712	RCOM	3494.00	(33.56)	(1221.00)	(2361.11)
532721	VISASTEEL	401.08	61.58	(49.05)	62.15
532757	VOLTAMP	130.45	13.34	14.50	30.75
532886	SELMCL	507.95	(10.64)	(219.07)	17.46
532890	TAKE	354.37	11.56	35.72	4.38
532952	NAHARCAP	1.07	59.70	10.40	14.04
533470	RUSHIL	78.87	4.69	6.42	40.79
533001	SOMICONV	10.80	(29.04)	0.25	(28.57)
532942	KNRCON	480.75	58.57	67.59	123.73
532994	ARCHIDPLY	74.12	24.59	1.86	24.00
532997	KSK	1104.51	(0.25)	(288.09)	16.82
533264	ESL	706.87	(9.81)	(242.19)	(10.58)

533303	BFINVEST	0.40	(51.22)	0.55	0.00
533281	TECHNO	412.27	52.17	69.01	43.77
533569	SRSLTD	249.33	(58.25)	(41.96)	418.02
533296	FMNL	18.42	(4.71)	(8.02)	9.12
534060	PMCFIN	2.14	10.31	0.28	(52.54)

Economic Calendar					
Country	Monday 14th Aug 17	Tuesday 15th Aug 17	Wednesday 16th Aug 17	Thursday 17th Aug 17	Friday 18th Aug 17
<b>US</b>		Core Retail Sales m/m, Retail Sales m/m, Empire State Manufacturing Index, Import Prices m/m, Business Inventories m/m, NAHB Housing Market Index, TIC Long-Term Purchases.	Building Permits, Housing Starts, Crude Oil Inventories, FOMC Meeting Minutes	Unemployment Claims , Philly Fed Manufacturing Index, Capacity Utilization Rate , Industrial Production m/m , CB Leading Index m/m, Natural Gas Storage.	Prelim UoM Consumer Sentiment , Prelim UoM Inflation Expectations
<b>UK/EURO ZONE</b>	Italian Trade Balance, Industrial Production m/m, German Buba Monthly Report.	German Prelim GDP q/q, CPI y/y, PPI Input m/m, RPI y/y, Core CPI y/y, German ZEW Economic Sentiment, ZEW Economic Sentiment, CB Leading Index m/m.	Average Earnings Index 3m/y, Claimant Count Change, Unemployment Rate, Flash GDP q/q , German 10-y Bond Auction	Retail Sales m/m , Final CPI y/y , Final Core CPI y/y, Trade Balance, ECB Monetary Policy Meeting Accounts	German PPI m/m , Current Account
<b>INDIA</b>	WPI Data	Balance of Trade			





## Narnolia Securities Ltd

201 | 2nd Floor | Marble Arch Building | 236B-AJC Bose  
Road | Kolkata-700 020 , Ph : 033-40501500

email: [narnolia@narnolia.com](mailto:narnolia@narnolia.com),  
website : [www.narnolia.com](http://www.narnolia.com)

**Risk Disclosure & Disclaimer:** This report/message is for the personal information of the authorized recipient and does not construe to be any investment, legal or taxation advice to you. Narnolia Securities Ltd. (Hereinafter referred as NSL) is not soliciting any action based upon it. This report/message is not for public distribution and has been furnished to you solely for your information and should not be reproduced or redistributed to any other person in any form. The report/message is based upon publicly available information, findings of our research wing "East wind" & information that we consider reliable, but we do not represent that it is accurate or complete and we do not provide any express or implied warranty of any kind, and also these are subject to change without notice. The recipients of this report should rely on their own investigations, should use their own judgment for taking any investment decisions keeping in mind that past performance is not necessarily a guide to future performance & that the the value of any investment or income are subject to market and other risks. Further it will be safe to assume that NSL and /or its Group or associate Companies, their Directors, affiliates and/or employees may have interests/ positions, financial or otherwise, individually or otherwise in the recommended/mentioned securities/mutual funds/ model funds and other investment products which may be added or disposed including & other mentioned in this report/message.