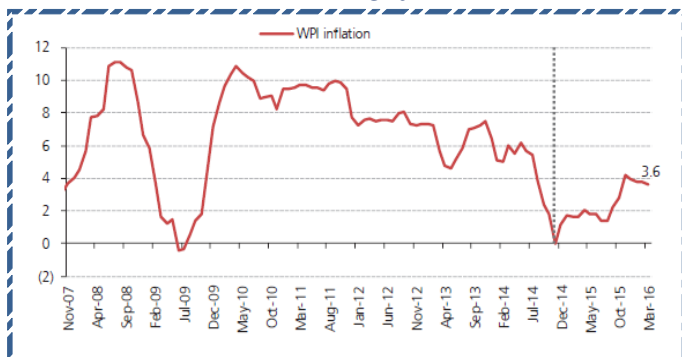


Quote of the Day

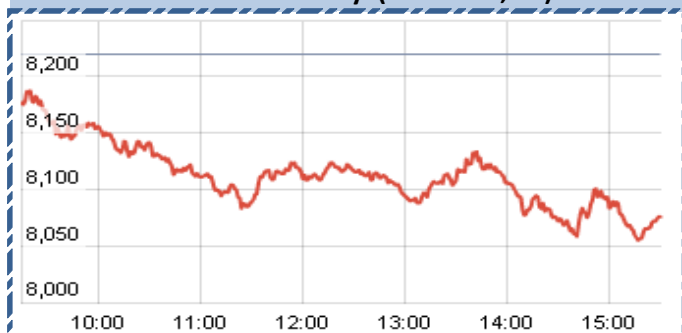
"An argument is made that there are just too many question marks about the near future; wouldn't it be better to wait until things clear up a bit?...face up to two unpleasant facts: The future is never clear [and] you pay a very high price for a cheery consensus. Uncertainty actually is the friend of the buyer of long term values."

Chart of the Day

WPI Trend



Index Action-Nifty (16th Dec, 14)



Index

Contents	Page	Coverage
News	3	UPDATE
Economic calendar	4	UPDATE

SGX NIFTY : 8112
(0.50 pts Up)

MARKET

Name	Value	Change
Sensex	26,781	(538.12)
Nifty	8,067.60	(152.00)
DOW	17068.87	(111.97)
NASDAQ	4547.83	(57.33)
CAC	4093.2	87.82
DAX	9563.89	229.88
FTSE	6331.83	149.11
NIKKIE	16851.81	96.49
HANG SENG	22677.25	6.75
EW ALL SHARE	13439.18	(285.77)

INSTITUTIONAL TURNOVER

FII			
Investor	Buy(Cr.)	Sale(Cr.)	Net(Cr.)
16th Dec	4005.90	5,253.14	(1247.24)
Dec,14	50624.85	48,382.49	2242.36
2014	949865.82	8,76,782.00	73083.82
DII			
Investor	Buy(Cr.)	Sale(Cr.)	Net(Cr.)
16th Dec	2370.36	1,835.76	534.60
Dec,14	20978.91	20,559.48	419.43
2014	342400.89	3,76,382.83	(33981.94)

COMMODITY PRICE

COMMODITY/CURRENCIES	Value	
GOLD	27165.00	↓
SILVER	36605.00	↓
CRUDEOIL	55.13	↓
COPPER	408.60	↓
NATURALGAS	234.60	↓
DOLLAR/RS.	63.50	↑
EURO/RS.	79.34	↓
POUND/RS.	99.80	↓

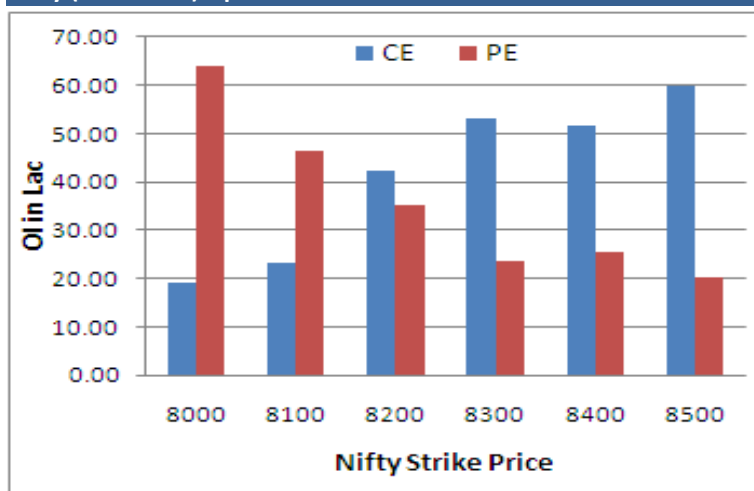
Narnolia Securities Ltd.

124, 1st floor 7/1, Lords Sinha Road Kolkata -700071. Ph 033-22821251 Toll Free no : 1-800-345-4000
email: research@narnolia.com, website : www.narnolia.com

NIFTY SNAPSHOT

Nifty Spot	8067.60(-152.00)
Nifty Dec 2014 Future	8118
Nifty Jan 2014 Future	8185
Nifty Dec 2014 Open Interest	23949650
Nifty Jan 2014 Open Interest	1859575
7 DMA of Spot Nifty	8276
21 DMA of Spot Nifty	8423
50 DMA of Spot Nifty	8224
VOLATILITY INDEX (VIX)	14.02(+2.29)
PUT CALL RATIO	1.01

Nifty (Dec Series) Option OI Distribution:



Activity of Nifty (Dec Series) Strike

Strike	CALL		PUT	
	OI	% Chng	OI	% Chng
8000	1925125	14.61	6385925	36.90
8100	2333800	79.50	4658925	-0.11
8200	4231175	65.14	3503000	-40.70
8300	5306125	30.29	2343100	-49.74
8400	5175575	-7.01	2533650	-17.98
8500	5992750	-18.08	2018150	-11.66

Fresh Long Seen In (Rising OI -Rising Price)

Scrip	OI	OI ch%	CMP	Ch%
INFY	119,91,500	3.5	1937.7	0.7
TECHM	24,05,000	0.7	2533.7	1.5
BHARTIARTL	184,79,000	0.2	350.1	0.0

PCR (OI)

STOCK	T1	T2
HCLTECH	0.56	0.42
EXIDEIND	0.46	0.38
JISLJALEQS	0.27	0.23
TCS	0.48	0.41
CESC	0.31	0.27



FIIs Activity (Fig in Cr)

Segment	Buy	Sell	Net
INDEX FUTURE	3,204	3,761	(557)
INDEX OPTION	40,885	40,917	(33)
STOCK FUTURE	2,798	3,851	(1,053)
STOCK OPTION	3,101	3,258	(158)
TOTAL	49,987	51,788	(1,801)

Fresh Shorts Seen In: (Rising OI -Falling Price)

Scrip	OI	OI ch%	CMP	Ch%
HDIL	348,76,000	16.5	62.1	-6.9
DRREDDY	13,21,000	14.5	3142.1	-6.3
ICICIBANK	567,66,250	10.3	330.7	-4.3
M&M	37,84,500	10.0	1229.9	-1.8
ITC	320,89,000	9.7	380.5	-3.1

PCR (OI)

STOCK	T1	T2
ITC	0.81	1.36
HDFC	0.32	0.49
DRREDDY	0.28	0.42
LICHSGFIN	0.44	0.66
HINDUNILVR	0.45	0.68

Markets Snapshot

Top Price Performers

Top Performers 1D	% Change	Top Performers 1W	% Change	Top Performers 1M	% Change
FORBESGOK	10.00	INDBANK	54.06	FORBESGOK	101.54
INDBANK	9.84	MANAKSIA	27.47	BINNY	89.36
RPPINFRA	8.60	MASTEK	26.51	FARMAXIND	79.01
JETAIRWAYS	7.20	STRAUSIND	26.29	MIC	77.02
EMPEESUG	6.05	BARTRONICS	22.29	INFODRIVE	72.16

Worst Price Performers

Worst Performers 1D	% Change	Worst Performers 1W	% Change	Worst Performers 1M	% Change
PRITI	(18.68)	PRITI	(35.80)	DIAPOWER	(53.32)
SATRAPROP	(17.71)	SHREEKRPOL	(30.56)	ERAINFRA	(47.67)
KSERASERA	(16.58)	SCANPGEOM	(25.03)	RASOYPR	(46.68)
SCANPGEOM	(15.11)	ELDERPHARM	(24.99)	REIAGROLTD	(42.36)
REMIMETAL	(14.77)	HAVELLS	(24.04)	WSI	(41.96)

Top News :

- **Strides Arcolab** has received approval from the United States Food & Drug Administration for Calcitriol Softgel capsules (vitamin D capsules). The product will be manufactured at the company's oral dosage facility at Bangalore and marketed by Strides in the US market . The US market for these capsules is approximately USD 50 million .
- **Alstom T&D India** has secured an order worth Rs 151.5 crore from Rajasthan Rajya Vidyut Prasaran Nigam to supply a 400/220 kV substation in Bhadla, and expand the existing 400/220 kV substation in Bikaner.
- **Coal India Ltd Clarification** : News regarding " "Coal India to set up South Africa Unit for acquiring Coal Assets." Company clarified that coal india approved to start dialogue with Government of Limpopo to undertake initiatives in its 272nd meeting held on 12th August 2011 . A Memorandum of Understanding (MOU) was signed amongst CIL, Trade and Investment of Limpopo (TIL) and Corridor Mining Resources (CMR) of the provincial Govt. of Limpopo in South Africa in Sep 2011. No agreement or any contract has been signed by the parties.
- **Dr. Reddy's** announces the Launch of Valganciclovir Tablets, USP". Dr Reddy s Laboratories announced today that it has launched Valganciclovir Tablets USD 450 mg, a therapeutic equivalent version of VALCYTE tablets in the US market on December 15, 2014, approved by the USFDA
- **Jagran Prakashan** has board approved the entry of the Company into the radio industry via acquisition of Music Broadcast Private Limited (MBPL)
- **KEC** executed a sale deed with Ardent Properties Private, a 100 percent subsidiary of Tata Housing Development Company and has completed all the formalities of said sale .
- **The Reserve Bank of India** issued a notification allowing commercial banks to flexibly structure existing project loans to infrastructure projects and core industries projects with the option to periodically refinance the loans, subject to certain conditions. Only term loans to projects in which the aggregate exposure of all institutional lenders exceeds Rs 500 crore in the infrastructure sector and in the core industries sector will qualify for such flexible structuring and refinancing, the RBI said. Banks may refinance the project term loan periodically after the project has commenced commercial operations, the RBI notification to commercial banks stated. If the project term loan or refinancing debt facility becomes a non-performing asset (NPA) at any stage, further refinancing should stop and the bank which holds the loan when it becomes NPA would be required to recognise the loan as such and make necessary provisions as required under the extant regulation .
- **ZEW said that Euro zone ZEW economic sentiment** fell to a seasonally adjusted 10.0, from 11.0 in the preceding month. Analysts had expected Euro zone ZEW economic sentiment to rise to 20.1 last month.
- **U.K. core CPI** fell to a seasonally adjusted annual rate of 1.2%, from 1.5% in the preceding month. Analysts had expected U.K. core CPI to remain unchanged at 1.5% last month.
- **Euro Zone Services PMI** rose to 51.9, from 51.1 in the preceding quarter. Analysts had expected Euro Zone Services PMI to rise to 51.5 in the last quarter.
- **U.K. PPI input** fell to a seasonally adjusted -1.0%, from -1.5% in the preceding month. Analysts had expected U.K. PPI input to fall -1.4% last month

Economic Calendar					
	Monday 15-Dec-14	Tuesday 16-Dec-14	Wednesday 17-Dec-14	Thursday 18-Dec-14	Friday 19-Dec-14
US	Empire State Manufacturing Index ,Capacity Utilization Rate , Industrial Production m/m , NAHB Housing Market Index ,	Building Permits .	CPI m/m , Core CPI m/m , current Account , FOMC Economic Projections , FOMC Statement , Federal Funds Rate , FOMC Press Conference .	Unemployment Claims , Philly Fed Manufacturing Index , CB Leading Index m/m , Natural Gas Storage .	
UK/EURO ZONE	PPI Input m/m , CPI y/y , RPI y/y , Core CPI y/y , HPI y/y , CBI Industrial Order Expectations .	Average Earnings Index 3m/y , Claimant Count Change , Unemployment Rate , German ZEW Economic Sentiment , ZEW Economic Sentiment , BOE Gov Carney Speaks , BOE Financial Stability Report , FPC Statement	Average Earnings Index 3m/y , Claimant Count Change , Unemployment Rate , German ZEW Economic Sentiment , ZEW Economic Sentiment ,German Buba Monthly Report .	German Ifo Business Climate , Retail Sales m/m , BOE Credit Conditions Survey .	GfK German Consumer Climate , German PPI m/m , Current Account , Public Sector Net Borrowing , CBI Realized Sales .
INDIA	WPI Data				



Narnolia Securities Ltd

124, 1st floor 7/ 1, Lords Sinha Road Kolkata 700071, Ph 033-
22821251 Toll Free no : 1-800-345-4000

email: research@narnolia.com,
website : www.narnolia.com

Risk Disclosure & Disclaimer: This report/message is for the personal information of the authorized recipient and does not construe to be any investment, legal or taxation advice to you. Narnolia Securities Ltd. (Hereinafter referred as NSL) is not soliciting any action based upon it. This report/message is not for public distribution and has been furnished to you solely for your information and should not be reproduced or redistributed to any other person in any form. The report/message is based upon publicly available information, findings of our research wing "East wind" & information that we consider reliable, but we do not represent that it is accurate or complete and we do not provide any express or implied warranty of any kind, and also these are subject to change without notice. The recipients of this report should rely on their own investigations, should use their own judgment for taking any investment decisions keeping in mind that past performance is not necessarily a guide to future performance & that the value of any investment or income are subject to market and other risks. Further it will be safe to assume that NSL and /or its Group or associate Companies, their Directors, affiliates and/or employees may have interests/ positions, financial or otherwise, individually or otherwise in the recommended/mentioned securities/mutual funds/ model funds and other investment products which may be added or disposed including & other mentioned in this report/message.