

SGX NIFTY : 7787 (27 Pt Up)

Quote of the Day

"Long ago, Sir Isaac Newton gave us three laws of motion, which were the work of genius. But Sir Isaac's talents didn't extend to investing: He lost a bundle in the South Sea Bubble, explaining later, 'I can calculate the movement of the stars, but not the madness of men.' If he had not been traumatized by this loss, Sir Isaac might well have gone on to discover the Fourth Law of Motion: For investors as a whole, returns decrease as motion increases."

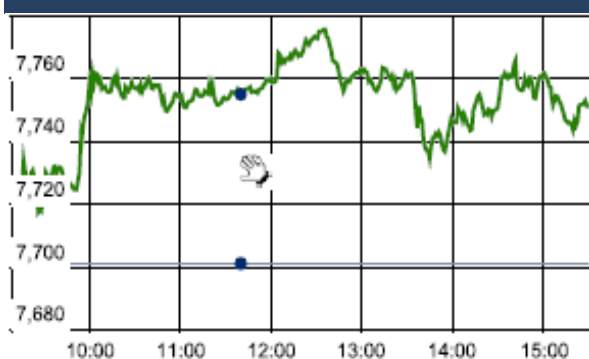
Warren Buffett

Chart of the Day

Domestic Mutual Fund Trend



Index Action Nifty (16th Dec 15)



Index

Contents	Page	Coverage
News	2	Update
Economic Calendar	3	Update

Market

Name	Value	Change
Sensex	25,320.44	170.09
Nifty	7750.90	50.00
DOW	17,748.89	223.98
NASDAQ	5,071.13	75.77
CAC	4,624.67	10.27
DAX	10,469.26	18.88
FTSE	6,061.19	43.40
NIKKEI	19,486.78	436.87
HANG SENG	21,941.52	240.31
EW ALL SHARE	13445.83	71.26

Instituional Turnover

FII

Investor	Buy(Cr.)	Sale(Cr.)	Net(Cr.)
16-Dec-15	2732.49	3235.71	(503.22)
Dec,15	32472.15	36878.39	(4406.24)
2015	1083114.69	1100361.42	(17246.73)

DII

Investor	Buy(Cr.)	Sale(Cr.)	Net(Cr.)
16-Dec-15	2288.98	1264.95	1024.03
Dec,15	20817.25	12475.60	8341.65
2015	446649.52	380852.70	65796.82

Commodity Price

Commodity/Currencies	Value	
GOLD	25468.00	↑
SILVER	34400.00	↑
CRUDEOIL	35.35	↓
COPPER	310.08	↑
NATURALGAS	120.80	↓
DOLLAR/RS.	66.73	↓
EURO/RS.	72.12	↑
POUND/RS.	99.41	↑

Market Snapshot

Top Price Performers

Top Performers 1D	% Change	Top Performers 1W	% Change	Top Performers 1M	% Change
RAMANEWS	20.00	EKC	54.42	GEMINI	134.97
POLYMED	19.99	DOLATINVES	52.27	BLKASHYAP	121.20
LPDC	19.79	LPDC	44.20	RAMANEWS	87.12
PIPAVAVDOC	16.70	RAMANEWS	43.82	EKC	80.84
MAFATLAIND	15.72	HITECHPLAS	42.07	DONEAR	76.70

Worst Performers 1D	% Change	Worst Performers 1W	% Change	Worst Performers 1M	% Change
WESTE	(11.99)	SANWARIA	(20.05)	KGNIND	(44.70)
CHROMATIC	(10.68)	SUDAR	(17.86)	SUDAR	(42.72)
SHRENUJ	(9.86)	SHRENUJ	(17.23)	NCOPPER	(37.06)
SUDAR	(9.67)	REIAGROLTD	(17.11)	TREEHOUSE	(29.41)
DOLATINVES	(8.22)	3IINFOTECH	(16.70)	KGNENT	(27.60)

Top News

- **Infosys** its product subsidiary has received order for banking solution from a Hong Kong-based bank. Infosys Finacle and Fubon Bank (Hong Kong) announced the bank's decision to adopt the new generation Finacle Core Banking solution. This transformation initiative will significantly improve the bank's operational efficiency, strengthen innovation capabilities and support rapid growth. Finacle is the banking solution from EdgeVerve Systems, a wholly owned product subsidiary of Infosys. Fubon Bank (Hong Kong) is a wholly owned subsidiary of Fubon Financial Holding Company.

- **AstraZeneca** has agreed to buy Takeda Pharmaceutical's respiratory business, including expanded rights to roflumilast, a treatment for chronic obstructive pulmonary disease (COPD). AstraZeneca, which has marketed roflumilast in the United States under the name Daliresp since the first quarter of 2015, said it would pay USD 575 million to the Japanese company.

- **Gayatri Projects** wins Rs 143 cr order from Govt of Mizoram. The order is from State Investment Program Management and Implementation Unit (SIPMIU), Urban Development and Poverty Alleviation Development (UD&PA), Government of Mizoram for contract of water distribution networks and feeder mains at Aizwal. This is the company's first foray into the fast growing and specialized water supply EPC industry and it expects a significant ramp-up in this space over next 2-3 years.

- **South Indian Bank's** advances growth may stand at about 15-16 percent in fiscal 2015-16, compared to 11 percent in fiscal 2014-15. There are no major indicators in the economy that show large industries are going to turn around or their cash flows will improve significantly. Company added that they does see a material impact from the Chennai floods on its non-performing asset (NPA) picture.

- **LIC Housing Finance** is getting board approval for acquiring further stake in asset management company and Trustee set up by country's largest insurance company LIC. The company had received a proposal to acquire stake in LIC Nomura Mutual Fund Asset Management Company and LIC Nomura Mutual Fund Trustee Company from the Japanese financial firm.

- **Thomas Cook (India)** said that it has received approval from competition watchdog for its acquisition of rival Kuoni Travel. The Competition Commission of India (CCI) has passed an order approving the proposed deal. Thomas Cook had announced acquisition of Kuoni group's business in India and Hong Kong for Rs 535 crore. The company had entered into an agreement with Kuoni group to buy 100 per cent stake in Kuoni Travel (India) Pvt Ltd.

- **The government increased** excise duty on petrol by Rs 0.30 per litre and by Rs 1.17 a litre on diesel to make use of slump in oil prices to garner an additional Rs 2,500 crore. The government on Wednesday increased excise duty on petrol by Rs 0.30 per litre and by Rs 1.17 a litre on diesel to make use of slump in oil prices to garner an additional Rs 2,500 crore.

- **Brazilian Retail Sales** rose to a seasonally adjusted -5.6%, from -6.3% in the preceding month whose figure was revised down from -6.2%.

- **Eurostat said consumer price inflation** rose by a seasonally adjusted 0.2% last month, up from a preliminary estimate of 0.1%. Euro zone inflation rose by 0.1% in October.

- **U.K. Office of National Statistics said that Average hourly earnings + bonus** fell to a seasonally adjusted annual rate of 2.4%, from 3.0% in the preceding month.

- **South Korean Unemployment Rate remained** unchanged at a seasonally adjusted annual rate of 3.4%, from 3.4% in the preceding month.

- **U.S. API Weekly Crude Stock rose** to 2.300M, from -1.900M in the preceding week. Analysts had expected U.S. API Weekly Crude Stock to fall -2.500M last week.

- **Singaporean Unemployment Rate** remained unchanged at 2.0%, from 2.0% in the preceding quarter. Analysts had expected Singaporean Unemployment Rate to remain unchanged at 2.0% in the last quarter.

Economic Calendar					
Country	Monday 14th Dec 15	Tuesday 15th Dec 15	Wednesday 16th Dec 15	Thursday 17th Dec 15	Friday 18th Dec 15
US		CPI m/m , Core CPI m/m , Empire State Manufacturing Index , NAHB Housing Market Index .	Building Permits , Housing Starts , FOMC Member Dudley Speaks , Crude Oil Inventories . , FOMC Press Conference , Federal Funds Rate , TIC Long-Term Purchases .	Unemployment Claims , Current Account , Philly Fed Manufacturing Index , Natural Gas Storage .	CB Leading Index m/m .
UK/EURO ZONE	Industrial Production m/m	Italian Trade Balance , CPI y/y , PPI Input m/m , RPI y/y , German ZEW Economic Sentiment , ZEW Economic Sentiment , Employment Change q/q .	Average Earnings Index 3m/y , Claimant Count Change , Unemployment Rate , Final CPI y/y , Final Core CPI y/y , Trade Balance .	German Ifo Business Climate , ECB Economic Bulletin , Retail Sales m/m m , CBI Industrial Order Expectations .	Current Account .
INDIA	WPI Data .				

Narnolia Securities Ltd.

Narnolia Research Lab

Stellar IT Park | 5th Floor | Office Space No. 6 | Tower-I/nd Plot No. C-25 | Sector-62 | Noida | Ph : 0120-4215110

Central Strategy Desk - Kolkata

124 | 1st Floor | 7/1 Lords Sinha Road | Kolkata - 71
Ph : 033-22821500 | M : 93347 14418, 98302 69810