

SGX NIFTY : 7418 (23 Pt Down)

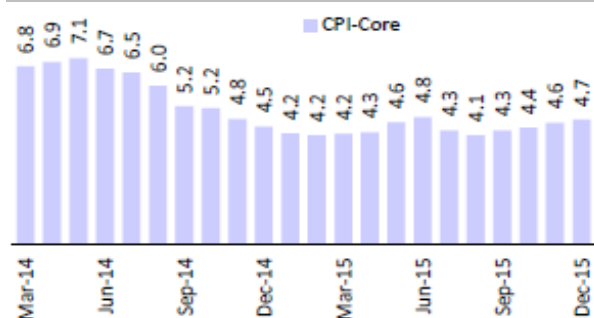
Quote of the Day

"The market does reflect the available information, as the professors tell us. But just as the funhouse mirrors don't always accurately reflect your weight, the markets don't always accurately reflect that information. Usually they are too pessimistic when it's bad and too optimistic when it's good."

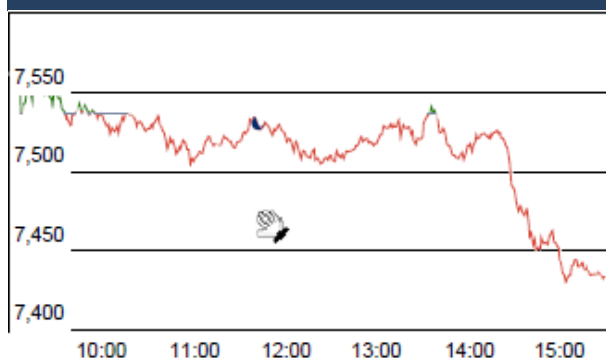
Bill Miller

Chart of the Day

Core CPI Trend



Index Action Nifty (15th Jan 16)



Index

Contents	Page	Coverage
News	2	Update
Economic Calendar	3	Update

Market

Name	Value	Change
Sensex	24,455.04	(317.23)
Nifty	7437.80	(99.00)
DOW	15,988.08	(390.97)
NASDAQ	4,488.42	(126.58)
CAC	4,210.16	(102.73)
DAX	9,545.27	(248.93)
FTSE	5,804.10	(114.12)
NIKKEI	16,814.10	(333.01)
HANG SENG	7,726.18	(35.58)
EW ALL SHARE	13038.69	(264.68)

Instituional Turnover

FII

Investor	Buy(Cr.)	Sale(Cr.)	Net(Cr.)
15-Jan-16	3172.68	4296.47	(1123.79)
Jan,16	34698.86	42303.38	(7604.52)
2016	34698.86	42303.38	(7604.52)

DII

Investor	Buy(Cr.)	Sale(Cr.)	Net(Cr.)
15-Jan-16	2320.25	1631.41	688.84
Jan,16	20758.04	15178.58	5579.46
2016	20758.04	15178.58	5579.46

Commodity Price

Commodity/Currencies	Value	
GOLD	26112.00	↑
SILVER	34054.00	↑
CRUDEOIL	30.17	↓
COPPER	294.65	↓
NATURALGAS	142.90	↓
DOLLAR/RS.	67.60	↑
EURO/RS.	73.80	↓
POUND/RS.	96.54	↓

Market Snapshot

Top Price Performers

Top Performers 1D	% Change	Top Performers 1W	% Change	Top Performers 1M	% Change
PANORAMUNI	18.05	SMOBILITY	42.55	ZYLOG	132.08
GREENFIRE	11.06	SHRENUJ	27.48	KANANIIND	100.64
BURNPUR	9.89	TFL	27.23	JHS	79.01
JHS	5.00	JHS	27.14	SPENTEX	77.53
KHAITANELE	5.00	EMPEESUG	26.14	SURANACORP	75.32

Worst Performers 1D	% Change	Worst Performers 1W	% Change	Worst Performers 1M	% Change
BIRLACOT	(20.00)	MARKSANS	(35.46)	ESSDEE	(42.63)
MARKSANS	(19.96)	SUDAR	(28.92)	BSLIMITED	(38.51)
BSLIMITED	(17.21)	TRF	(28.62)	OUTCTYTRVL	(37.52)
GEE	(16.87)	CRANESSOFT	(27.13)	MARKSANS	(37.24)
TRF	(16.21)	MBSWITCH	(26.72)	SHREYAS	(35.62)

Top News

• **Fund Action** : White Collar Venture Capital Fund Limited bought 535,000 shares of Burnpur Cement at Rs 10.83 per share on the BSE.

** GMO Emerging Dom Opportunities FD bought 838,515 shares of Gateway Distriparks at Rs 343 per share on the NSE. Also, the house bought 732,174 shares of the same company at Rs 343 per share on the BSE.

** Century Textile & Industries bought 391,500 shares of Mangalam Timber at Rs 15.75 per share on the NSE. However, Ladha Finance Limited sold 391,500 shares at Rs 15.75 on the NSE.

• **Cyient Mgt Guideline** : Cyient said that capacity output in Q3 was low due to fewer working days which resulted in a weak quarter. However, he expects better revenue in Q4. The Rangsons (acquired in January, 2015) has generated revenue of USD 28 million in first 9 months and expects it to generate USD 40 million for FY16.

• **State Bank of India (SBI)** said it proposes to raise up to Rs 15,000 crore from various means, including public offer and overseas issuance of shares, in the next 14 months. The fund raised will help the bank to meet global risk norms, Basel III, which will kick in from March 2019. SBI had said it is planning to monetise non-core assets to raise capital for meeting Basel norms.

• **Bank of India** said it has acquired 49 percent stake from BSE Ltd in their joint venture BOI Shareholding Ltd for an undisclosed amount. BOI Shareholding Ltd was established in 1989 as an independent full-fledged clearing house of the exchange with the public lender having 51 percent stake.

• **NTPCB** has cut average cost of generating electricity from coal by 13.6 per cent in the last three months by slashing coal imports, saving consumers Rs 300 crore a month. This fiscal cut coal imports by 30 per cent to 8.6 million tons from 12.3 million tons a year ago

• **Dalmia Bharat** said it has inked a pact with KKR to acquire the global private equity giant's 15 percent stake in its subsidiary Dalmia Cement Bharat Ltd for over Rs 1,218 crore in a cash and stock deal.

• **Wockhardt Ltd** has informed that Inspection of manufacturing unit at E-1/1, MIDC, Shendra, Aurangabad by US FDA has since been completed. US FDA has made 9 observations for which appropriate reply would be submitted to inspecting authority in due course. Further to inform you that Shendra manufacturing unit is a new facility and presently there are no supply of products from the said Unit to USA markets

• **India Services exports** fell by 3.8 % year-on-year to USD 12.01 billion in November 2015. Import of services too fell by 7.6 percent to USD 5.69 billion in the month last year compared to November 2014.

• **University of Michigan said that consumer sentiment** rose to a seasonally adjusted 93.3, from 92.6 in the preceding month. Analysts had expected UoM consumer sentiment to rise to 93.0 last month.

• **U.S. Business Inventories** fell to a seasonally adjusted -0.2%, from -0.1% in the preceding month. Analysts had expected U.S. Business Inventories to fall -0.1% last month.

• **Federal Reserve said that industrial production** fell to -0.4%, from -0.9% in the preceding month whose figure was revised down from -0.6%. Analysts had expected industrial production to fall -0.2% last month.

• **U.S. Capacity Utilization Rate** fell to 76.5%, from 76.9% in the preceding month whose figure was revised down from 77.0%. Analysts had expected U.S. Capacity Utilization Rate to fall to 76.8% last month.

• **U.S. core retail sales** fell to a seasonally adjusted -0.1%, from 0.3% in the preceding month whose figure was revised down from 0.4%. Analysts had expected U.S. core retail sales to rise 0.2% last month.

• **U.S Bureau of Labor Statistics - Department of Labor said that U.S. PPI** fell to a seasonally adjusted -0.2%, from 0.3% in the preceding month. Analysts had expected U.S. PPI to fall -0.2% last month.

Result Calendar Q3FY16

BSE Code	Company Name	Date	BSE Code	Company Name	Date
511756	ABIRAFN	18-Jan-16	532764	GEECEE	20-Jan-16
526847	ASHSI	18-Jan-16	531301	HIGHSTREE	20-Jan-16
500820	ASIANPAINT	18-Jan-16	535789	IBULHSGFIN	20-Jan-16
503960	BBL	18-Jan-16	532960	IBVENTURES	20-Jan-16
512608	BHANDHOS	18-Jan-16	524622	ISTRNETWK	20-Jan-16
523229	BHARATSE	18-Jan-16	533148	JSWENERGY	20-Jan-16
532848	DELTACORP	18-Jan-16	532400	KPIT	20-Jan-16
500186	HINDOILEXP	18-Jan-16	517415	LEENEE	20-Jan-16
500247	KOTAKBANK	18-Jan-16	500262	MAFATLAFIN	20-Jan-16
539303	MINDAFIN	18-Jan-16	523828	MENONBE	20-Jan-16
532819	MINDTREE	18-Jan-16	500304	NIITLTD	20-Jan-16
530175	ODYSSEY	18-Jan-16	531209	NUCLEUS	20-Jan-16
500355	RALLIS	18-Jan-16	500390	RELINFRA	20-Jan-16
532884	REFEX	18-Jan-16	532663	SASKEN	20-Jan-16
520086	SICAL	18-Jan-16	532218	SOUTHBANK	20-Jan-16
513262	SSWL	18-Jan-16	512257	SVARTCORP	20-Jan-16
513434	TATAMETALI	18-Jan-16	510245	SWASTIVI	20-Jan-16
504966	TINPLATE	18-Jan-16	500408	TATAELXI	20-Jan-16
517506	TTKPRESTIG	18-Jan-16	513010	TATASPONGE	20-Jan-16
539331	VETO	18-Jan-16	504961	TATAYODOGA	20-Jan-16
507685	WIPRO	18-Jan-16	532356	TRIVENI	20-Jan-16
531147	ALICON	19-Jan-16	532538	ULTRACEMCO	20-Jan-16
522134	ARTSONEN	19-Jan-16	532893	VTMLTD	20-Jan-16
500042	BASF	19-Jan-16	532056	ADIEXRE	21-Jan-16
531340	BERVINL	19-Jan-16	533573	APLLTD	21-Jan-16
532760	DEEPIND	19-Jan-16	500215	ATFL	21-Jan-16
531346	EASTRED	19-Jan-16	511724	BALFC	21-Jan-16
526797	GREENPLY	19-Jan-16	500059	BINANIIND	21-Jan-16
532281	HCLTECH	19-Jan-16	532523	BIOCON	21-Jan-16
507981	JINDHOT	19-Jan-16	500085	CHAMBLFERT	21-Jan-16
531648	MAHAVIRIND	19-Jan-16	506365	CHEMOPH	21-Jan-16
539116	OPCHAINS	19-Jan-16	500645	DEEPAKFERT	21-Jan-16
532742	PAUSHAKLTD	19-Jan-16	523708	EIMCOELECO	21-Jan-16
524570	PODARPIGQ	19-Jan-16	500135	ESSELPRO	21-Jan-16
500325	RELIANCE	19-Jan-16	500086	EXIDEIND	21-Jan-16
532939	RPOWER	19-Jan-16	500150	FOSECOIND	21-Jan-16
533655	TRITURBINE	19-Jan-16	500174	GLFL	21-Jan-16
504067	ZENSARTECH	19-Jan-16	500690	GSFC	21-Jan-16
505665	ABCBEARS	20-Jan-16	532855	HARYNACAP	21-Jan-16
512247	ASHCAP	20-Jan-16	531531	HATSUN	21-Jan-16
506267	ASSAPET	20-Jan-16	519552	HERITGFOOD	21-Jan-16
532215	AXISBANK	20-Jan-16	500183	HFCL	21-Jan-16
511501	BHARAT	20-Jan-16	500188	HINDZINC	21-Jan-16
511072	DHFL	20-Jan-16	532832	IBREALEST	21-Jan-16
532922	EDELWEISS	20-Jan-16	532822	IDEA	21-Jan-16
513108	GANDHITUBE	20-Jan-16	539448	INDIGO	21-Jan-16
532345	GATI	20-Jan-16	502330	IPAPPM	21-Jan-16

511034	JINDRILL	21-Jan-16	506680	TRELCHE-B	22-Jan-16
532720	M&MFIN	21-Jan-16	522267	VJLAXMIE	22-Jan-16
520021	OMAXAUTO	21-Jan-16	534392	VSSL	22-Jan-16
531512	ORIENTTR	21-Jan-16	524634	ALUFLUOR	23-Jan-16
500327	PILITA	21-Jan-16	513729	AROGRANITE	23-Jan-16
538771	PINCON	21-Jan-16	500033	FORCEMOT	23-Jan-16
500330	RAYMOND	21-Jan-16	524019	HYDROS&S	23-Jan-16
500111	RELCAPITAL	21-Jan-16	517569	KEI	23-Jan-16
505807	ROLCOEN	21-Jan-16	507813	NOL	23-Jan-16
532795	SITICABLE	21-Jan-16	532521	PALRED	23-Jan-16
539268	SYNGENE	21-Jan-16	533179	PERSISTENT	23-Jan-16
501242	TCIFINANCE	21-Jan-16	524037	RAMAPHO	23-Jan-16
523301	TCPLPACK	21-Jan-16	517447	RSSOFTWARE	23-Jan-16
500254	UTTAMVALUE	21-Jan-16	503811	SIYSIL	23-Jan-16
519457	VIRATCRA	21-Jan-16	539255	STARDELTA	23-Jan-16
509966	VSTIND	21-Jan-16	506690	UNICHEMLAB	23-Jan-16
526525	WWLEATH	21-Jan-16	520119	ASAL	25-Jan-16
532794	ZEEMEDIA	21-Jan-16	526849	BANARBEADS	25-Jan-16
523411	ADCINDIA	22-Jan-16	512313	BIJLTEX	25-Jan-16
533271	ASHOKA	22-Jan-16	531344	CONCOR	25-Jan-16
500027	ATUL	22-Jan-16	533167	COROENGG	25-Jan-16
532792	CAIRN	22-Jan-16	508814	COSMOFILMS	25-Jan-16
511196	CANFINHOME	22-Jan-16	500246	ENVAIREL	25-Jan-16
500147	CMIFPE	22-Jan-16	531508	EVEREADY	25-Jan-16
506395	COROMANDEL	22-Jan-16	509597	HARDCAS	25-Jan-16
533151	DBCORP	22-Jan-16	500179	HCL-INSYS	25-Jan-16
524790	EVERESTO	22-Jan-16	500180	HDFCBANK	25-Jan-16
532285	GEOJITBNPP	22-Jan-16	524669	HESTERBIO	25-Jan-16
538979	GRNLAMIND	22-Jan-16	533217	HMVL	25-Jan-16
500875	ITC	22-Jan-16	530055	HRMNYCP	25-Jan-16
530049	JJEXPO	22-Jan-16	511194	ICDSLTD	25-Jan-16
508929	JOYREALTY	22-Jan-16	538835	INTELLECT	25-Jan-16
506528	KELENG	22-Jan-16	500165	KANSAINER	25-Jan-16
502937	KESORAMIND	22-Jan-16	539276	KAYA	25-Jan-16
505283	KIRLPNU	22-Jan-16	500241	KIRLOSBROS	25-Jan-16
536170	KUSHAL	22-Jan-16	521248	KITEX	25-Jan-16
533519	L&TFH	22-Jan-16	517449	MAGNAELQ	25-Jan-16
534690	LAKSHVILAS	22-Jan-16	532654	MCLEODRUSS	25-Jan-16
532796	LUMAXTECH	22-Jan-16	531395	PADAMCO	25-Jan-16
533088	MHRIL	22-Jan-16	500162	PARRYSUGAR	25-Jan-16
517536	ONWARDTEC	22-Jan-16	517522	RAJGLOWIR	25-Jan-16
514300	PIONEEREMB	22-Jan-16	532661	RML	25-Jan-16
532712	RCOM	22-Jan-16	512309	ROSETEX	25-Jan-16
517500	ROTO	22-Jan-16	507894	SCHABLON	25-Jan-16
526885	SARLAPOLY	22-Jan-16	531548	SOMANYCERA	25-Jan-16
538685	SHEMAROO	22-Jan-16	517168	SUBROS	25-Jan-16
504398	SJCORP	22-Jan-16	509930	SUPREMEIND	25-Jan-16
500405	SUPPETRO	22-Jan-16	500407	SWARAJENG	25-Jan-16
526650	TFCILTD	22-Jan-16	533158	THANGAMAYL	25-Jan-16

531652	THIRDFIN	25-Jan-16	505250	GGDANDE	28-Jan-16
532156	VAIBHAVGBL	25-Jan-16	500171	GHCL	28-Jan-16
531950	VERTEX	25-Jan-16	531600	GOGIACAP	28-Jan-16
502986	VTL	25-Jan-16	505576	GOLDCORP	28-Jan-16
505412	WENDT	25-Jan-16	533248	GPPL	28-Jan-16
519224	WILLAMAGOR	25-Jan-16	500185	HCC	28-Jan-16
532774	AFL	27-Jan-16	532174	ICICIBANK	28-Jan-16
505216	ALFREDHE	27-Jan-16	517380	IGARASHI	28-Jan-16
506767	ALKYLAMINE	27-Jan-16	501295	IITL	28-Jan-16
500049	BEL	27-Jan-16	500214	IONEXCHANG	28-Jan-16
524606	BERLDRG	27-Jan-16	505750	JOSTS	28-Jan-16
531582	BERYLSE	27-Jan-16	532926	JYOTHYLAB	28-Jan-16
532974	BIRLAMONEY	27-Jan-16	500245	KIRLFER	28-Jan-16
500830	COLPAL	27-Jan-16	524103	LINEARPO	28-Jan-16
532099	DATABASE	27-Jan-16	533012	LPDC	28-Jan-16
507886	DHRUVES	27-Jan-16	501874	MACKINN	28-Jan-16
523736	DPL	27-Jan-16	500264	MAFATIND	28-Jan-16
533208	EMAMIPAP	27-Jan-16	532313	MAHLIFE	28-Jan-16
500670	GNFC	27-Jan-16	521018	MARALOVER	28-Jan-16
532424	GODREJCP	27-Jan-16	531319	MARUTISE	28-Jan-16
509488	GRAPHITE	27-Jan-16	509196	MMRUBBR-B	28-Jan-16
517354	HAVELLS	27-Jan-16	533398	MUTHOOTFIN	28-Jan-16
500010	HDFC	27-Jan-16	532777	NAUKRI	28-Jan-16
509631	HEG	27-Jan-16	508670	NEAGI	28-Jan-16
532662	HTMEDIA	27-Jan-16	532481	NOIDATOLL	28-Jan-16
539437	IDFCBANK	27-Jan-16	500313	OILCOUNTUB	28-Jan-16
534816	INFRATEL	27-Jan-16	511702	PARSHINV	28-Jan-16
500233	KAJARIACER	27-Jan-16	532987	RBL	28-Jan-16
533293	KIRLOSENG	27-Jan-16	531539	RISHDIGA	28-Jan-16
500250	LGBBROSLTD	27-Jan-16	532699	ROHLTD	28-Jan-16
533007	LGBFORGE	27-Jan-16	531359	SRAMSET	28-Jan-16
532440	MPSLTD	27-Jan-16	516108	STHINPA	28-Jan-16
516062	NATPLY	27-Jan-16	530231	SUBSM	28-Jan-16
513683	NEYVELILIG	27-Jan-16	532812	TFL	28-Jan-16
500730	NOCIL	27-Jan-16	590005	TIDEWATER	28-Jan-16
539354	POLYSPIN	27-Jan-16	500114	TITAN	28-Jan-16
532988	RANEENGINE	27-Jan-16	505854	TRF	28-Jan-16
512115	ROSEMER	27-Jan-16	512205	VATSAEDU	28-Jan-16
502090	SAGCEM	27-Jan-16	524129	VINYLINDIA	28-Jan-16
507984	SERIND	27-Jan-16	519214	WILLIMFI	28-Jan-16
522034	SHANTIGEAR	27-Jan-16	590013	XPROINDIA	28-Jan-16
532143	SKMEGGPROD	27-Jan-16	512587	ZODJRDMKJ	28-Jan-16
532301	TATACOFFEE	27-Jan-16	531581	ALKADIA	29-Jan-16
532432	UNITDSPR	27-Jan-16	521097	AMARJOTHI	29-Jan-16
532259	APARINDS	28-Jan-16	505688	BHARATGEAR	29-Jan-16
532454	BHARTIARTL	28-Jan-16	500067	BLUESTARCO	29-Jan-16
533108	BTTL	28-Jan-16	534804	CARERATING	29-Jan-16
500096	DABUR	28-Jan-16	511243	CHOLAFIN	29-Jan-16
531162	EMAMILTD	28-Jan-16	526821	DAICHI	29-Jan-16

509525	EMPIND	28-Jan-16	532927	ECLERX	29-Jan-16
532809	FSL	28-Jan-16	503681	ELCIDIN	29-Jan-16
505700	ELECON	29-Jan-16	532648	YESBANK	29-Jan-16
504387	ELFTRDG	29-Jan-16	526125	ARHNTTO	30-Jan-16
517477	ELNET	29-Jan-16	526187	ASHRAM	30-Jan-16
526574	ENTRINT	29-Jan-16	522004	BATLIBOI	30-Jan-16
505714	GABRIEL	29-Jan-16	530803	BHAGIL	30-Jan-16
511676	GICHSGFIN	29-Jan-16	502216	BOMBPOT	30-Jan-16
505726	IFBIND	29-Jan-16	531210	COLINZ	30-Jan-16
531968	IITLPROJ	29-Jan-16	521216	DHANROTO	30-Jan-16
504741	INDIANHUME	29-Jan-16	531533	ECOM	30-Jan-16
532240	INDNIPPON	29-Jan-16	500840	EIHOTEL	30-Jan-16
532100	INDOCITY	29-Jan-16	523754	EPCIN	30-Jan-16
532612	INDOCO	29-Jan-16	531155	EPSOMPRO	30-Jan-16
511391	INTRGLB	29-Jan-16	530705	FLORATX	30-Jan-16
500228	JSWSTEEL	29-Jan-16	500300	GRASIM	30-Jan-16
508993	KEDIACN	29-Jan-16	504176	HIGHENE	30-Jan-16
500243	KIRLOSIND	29-Jan-16	538838	ICL	30-Jan-16
523207	KOKUYOCLN	29-Jan-16	532659	IDFC	30-Jan-16
517463	LINAKS	29-Jan-16	530405	JINDCAP	30-Jan-16
507912	LKPFIN	29-Jan-16	530915	JRFOODS	30-Jan-16
500510	LT	29-Jan-16	514448	JYOTIRES	30-Jan-16
532504	NAVINFUOR	29-Jan-16	532352	KIRLMU	30-Jan-16
504112	NELCO	29-Jan-16	530139	KREONFIN	30-Jan-16
500452	NEPCAGRO	29-Jan-16	530243	MANGASOF	30-Jan-16
500301	NEPCMICON	29-Jan-16	531221	MAYURFL	30-Jan-16
531077	NEPCPAPER	29-Jan-16	526251	MIDEASTP	30-Jan-16
521192	NEPCTEX	29-Jan-16	526891	MKTCREAT	30-Jan-16
500307	NIRLON	29-Jan-16	530733	NOVAPUB	30-Jan-16
508875	NITINALOY	29-Jan-16	514460	OSWAYRN	30-Jan-16
502420	ORIENTPPR	29-Jan-16	521080	PASARI	30-Jan-16
506590	PHILPCARB	29-Jan-16	519359	POONADAL	30-Jan-16
500331	PIDILITIND	29-Jan-16	511403	SAIJEEV	30-Jan-16
500540	PREMIER	29-Jan-16	502450	SESHAPAPER	30-Jan-16
532826	RAJTV	29-Jan-16	522152	SOLIMAC	30-Jan-16
507966	RASRESOR	29-Jan-16	524667	SOTL	30-Jan-16
501154	ROSEI	29-Jan-16	539217	SRESTHA	30-Jan-16
532638	SHOPERSTOP	29-Jan-16	521234	SRINACHA	30-Jan-16
532498	SHRIRAMCIT	29-Jan-16	513488	SSWRL	30-Jan-16
531219	SHYAMAINFO	29-Jan-16	506655	SUDARSCHEM	30-Jan-16
530593	SIRHIND	29-Jan-16	521228	TATIAGLOB	30-Jan-16
516038	SOMAPPR	29-Jan-16	524204	TEEAI	30-Jan-16
508963	STRLGUA	29-Jan-16	539488	TFLI	30-Jan-16
538876	STSERV	29-Jan-16	521226	UNIROYAL	30-Jan-16
501110	SUNRINV	29-Jan-16	531762	UNJHAFOR	30-Jan-16
531003	SWRNASE	29-Jan-16	531894	VATSAMUS	30-Jan-16
532390	TAJGVK	29-Jan-16	524038	VENLONENT	30-Jan-16
500411	THERMAX	29-Jan-16	538873	WINYCOMM	30-Jan-16
505978	TRITONV	29-Jan-16	526831	NAINAMS	31-Jan-16

532343	TVSMOTOR	29-Jan-16	530253	RAJTUBE	31-Jan-16
511371	VATCO	29-Jan-16	514045	BSL	1-Feb-16
532953	VGUARD	29-Jan-16	500040	CENTURYTEX	1-Feb-16
533023	WABCOINDIA	29-Jan-16	534328	HEXATRADEX	1-Feb-16
538382	WESTLEIRES	29-Jan-16	500378	JINDALSAW	1-Feb-16
539347	PHL	1-Feb-16	534076	ORIENTREF	5-Feb-16
533170	TAMBOLI	1-Feb-16	532460	PONNIERODE	5-Feb-16
532349	TCI	1-Feb-16	530073	SANGHVIMOV	5-Feb-16
533393	TCIDEVELOP	1-Feb-16	503804	SHRIDINE	5-Feb-16
532755	TECHM	1-Feb-16	505192	SMLISUZU	5-Feb-16
539118	VRLOG	1-Feb-16	520057	SONASTEER	5-Feb-16
500280	CENTENKA	2-Feb-16	500400	TATAPOWER	5-Feb-16
500093	CROMPGREAV	2-Feb-16	514142	TTL	5-Feb-16
533150	GODREJPROP	2-Feb-16	532867	V2RETAIL	5-Feb-16
531608	GORANIN	2-Feb-16	509910	ZSOUTGAS	5-Feb-16
506076	GRINDWELL	2-Feb-16	506820	ASTRAZEN	6-Feb-16
504786	INVPRECQ	2-Feb-16	531599	FDC	6-Feb-16
500266	MAHSCOOTER	2-Feb-16	532133	IFGLREFRAC	6-Feb-16
502165	OCL	2-Feb-16	532644	JKCEMENT	6-Feb-16
503229	SIMPLXREA	2-Feb-16	523323	KOVAI	6-Feb-16
505827	SNL	2-Feb-16	526935	MBPARIKH	6-Feb-16
532513	TVSELECT	2-Feb-16	524709	NAGAAGRI	6-Feb-16
532978	BAJAFINSV	3-Feb-16	526721	NICOPAR	6-Feb-16
500034	BAJFINANCE	3-Feb-16	500459	PGHH	6-Feb-16
501455	GREAVESCOT	3-Feb-16	526775	VALIANT	6-Feb-16
532129	HEXAWARE	3-Feb-16	519174	ASHAI	8-Feb-16
506943	JBCHEPHARM	3-Feb-16	500020	BOMDYEING	8-Feb-16
523405	JMFINANCIL	3-Feb-16	521176	GANGOTRI	8-Feb-16
526947	LAOPALA	3-Feb-16	524084	MONSANTO	8-Feb-16
500252	LAXMIMACH	3-Feb-16	531157	ORGOAT	8-Feb-16
532865	MEGH	3-Feb-16	517296	PHOENIXLL	8-Feb-16
532915	RELIGARE	3-Feb-16	530233	AUROLAB	9-Feb-16
500387	SHREECEM	3-Feb-16	500825	BRITANNIA	9-Feb-16
512527	SUPER	3-Feb-16	531306	DHPIND	9-Feb-16
507747	TTKHEALTH	3-Feb-16	500124	DRREDDY	9-Feb-16
500002	ABB	4-Feb-16	538962	MINDACORP	9-Feb-16
532977	BAJAJ-AUTO	4-Feb-16	517334	MOTHERSUMI	9-Feb-16
500490	BAJAJHLDNG	4-Feb-16	526801	PSL	9-Feb-16
509480	BERGEPAIN	4-Feb-16	500260	RAMCOCEM	9-Feb-16
517544	CENTUM	4-Feb-16	505800	RANEHOLDIN	9-Feb-16
532173	CYBERTECH	4-Feb-16	539470	SHREEGANES	9-Feb-16
522261	DOLPHINOFF	4-Feb-16	533018	SIMPLXMIL	9-Feb-16
507815	GILLETTE	4-Feb-16	533019	SIMPLXPAP	9-Feb-16
508486	HAWKINCOOK	4-Feb-16	512153	SPECMKT	9-Feb-16
500211	INSILCO	4-Feb-16	520056	SUNCLAYLTD	9-Feb-16
504258	LAKSELEC	4-Feb-16	532509	SUPRAJIT	9-Feb-16
502958	LAKSHMIMIL	4-Feb-16	522113	TIMKEN	9-Feb-16
526299	MPHASIS	4-Feb-16	500410	ACC	10-Feb-16
500403	SUNDRMFAST	4-Feb-16	524824	BALPHARMA	10-Feb-16
500470	TATASTEEL	4-Feb-16	524663	BIBCL	10-Feb-16
534369	TBZ	4-Feb-16	511742	CHOKSEC	10-Feb-16
500414	TIMEX	4-Feb-16	500660	GLAXO	10-Feb-16
530783	TRANSASIA	4-Feb-16	509162	INDAG	10-Feb-16
506808	TUTIALKA	4-Feb-16	531626	OROSMITHS	10-Feb-16
524598	AKSCHEM	5-Feb-16	509782	OSEASPR	10-Feb-16

513375	CARBORUNIV	5-Feb-16	530669	PRESOFI	10-Feb-16
533144	COX&KINGS	5-Feb-16	502180	SHREDIGCEM	10-Feb-16
500089	DICIND	5-Feb-16	524542	SUKHJITS	10-Feb-16
520043	MUNJALSHOW	5-Feb-16	509917	TECHCON	10-Feb-16
530367	NRBBEARING	5-Feb-16	513540	TNSTLTU	10-Feb-16
538268	WONDERLA	10-Feb-16	500520	M&M	12-Feb-16
590043	HARITASEAT	11-Feb-16	531213	MANAPPURAM	12-Feb-16
532835	ICRA	11-Feb-16	517344	MINDTECK	12-Feb-16
532097	MUKANDENGG	11-Feb-16	501343	MOTOGENFIN	12-Feb-16
526481	PHOENXINTL	11-Feb-16	500790	NESTLEIND	12-Feb-16
500338	PRISMCEM	11-Feb-16	530897	NGIND	12-Feb-16
531500	RAJESHEXPO	11-Feb-16	506128	PARNAXLAB	12-Feb-16
517273	S&SPOWER	11-Feb-16	535755	PFRL	12-Feb-16
501423	SHAILY	11-Feb-16	523642	PIIND	12-Feb-16
524212	WANBURY	11-Feb-16	532527	RKFORGE	12-Feb-16
500041	BANARISUG	12-Feb-16	521222	SANBLUE	12-Feb-16
514440	BPTX	12-Feb-16	526532	SFPIL	12-Feb-16
530609	CARNATIN	12-Feb-16	520151	SHREYAS	12-Feb-16
530171	DAULAT	12-Feb-16	526901	SONALAD	12-Feb-16
531237	DHRUVCA	12-Feb-16	513307	SYNTHFO	12-Feb-16
590087	ELLENBARR	12-Feb-16	526558	JAMEHOT	13-Feb-16
505790	FAGBEARING	12-Feb-16	505594	MULTIIN	13-Feb-16
500141	FERROALL	12-Feb-16	511644	OMEGAIN	13-Feb-16
500164	GODREJIND	12-Feb-16	530125	SAMRATPH	13-Feb-16
532425	GULCHEM	12-Feb-16	532756	MAHINDCIE	22-Feb-16
500202	INDLEASE	12-Feb-16	520113	VESUVIUS	26-Feb-16
506079	LAKPRE	12-Feb-16			

Earning Estimate Q3FY16

BSE CODE	NSE CODE	SALES Rs (cr.)	SALES YOY	PAT Rs Cr	PAT YOY
500820	ASIANPAINT	4053.20	12.50	460.00	24.90
500875	ITC	9434.40	5.50	2775.60	5.30
500086	EXIDEIND	1751.40	12.40	151.80	56.20
532281	HCLTECH	10320.30	11.20	1775.90	(7.60)
532400	KPIT	817.00	4.80	68.70	5.10
532819	MINDTREE	1200.10	31.60	153.90	9.30
533179	PERSISTENT	579.20	17.10	68.20	(8.40)
500408	TATAELXSI	276.90	25.00	37.70	35.80
507685	WIPRO	12849.90	7.10	2196.00	0.10
532538	ULTRACEMCO	5825.20	6.10	415.60	14.10
533573	APLLTD	792.20	55.10	169.20	139.50
532523	BIOCON	879.40	15.60	123.10	35.50
533151	DBCORP	591.30	6.60	118.30	12.50
532795	SITICABLE	314.40	41.80	34.10	LP
500188	HINDZINC	3147.50	(18.30)	1400.80	(41.10)
532792	CAIRN	2126.90	(39.30)	199.20	(85.20)
500325	RELIANCE	62972.30	(21.50)	7003.60	37.70
532832	IBREALEST	630.80	(3.30)	55.90	(29.10)
532822	IDEA	9195.00	14.70	873.20	13.80
532712	RCOM	5460.20	(0.20)	105.00	(55.10)
500390	RELINFRA	2735.00	0.20	403.20	(0.70)
531344	CONCOR	1365.90	(5.90)	201.40	(33.10)
506395	COROMANDEL	3199.00	8.00	132.30	7.20

539448	INDIGO	4191.60	NA	718.80	NA
517506	TTKPRESTIG	414.40	8.00	34.20	21.70
532215	AXISBANK	4026.00	12.20	1928.10	1.50
500180	HDFCBANK	6879.70	20.70	3368.30	20.50
500247	KOTAKBANK	1758.30	66.00	628.70	35.40
511072	DHFL	416.60	17.40	191.50	20.00
535789	IBULHSGFIN	787.10	17.00	588.80	23.20
532720	M&MFIN	773.50	4.70	151.90	11.40

Result Q3FY16

NSE CODE	BSE CODE	SALES Rs (cr.)	SALES YOY	PAT Rs Cr	PAT YOY
ASHIKACR	590122	1.12	49.30	0.81	55.77
EXCAST	526735	18.30	66.10	0.57	42.50
PAWANSUT	535658	0.45	45.20	0.01	(50.00)
PRIMESECU	500337	1.88	28.80	3.41	342.86
RIIL	523445	22.13	(2.60)	3.96	(25.56)
NETWORK18	532798	905.59	8.90	(2.41)	80.20
NIITTECH	532541	381.00	14.70	48.07	8.44
ZEEL	505537	1595.00	17.00	274.40	(11.10)
TV18BRDCST	532800	693.00	14.10	78.00	29.20
HINDUNILVR	500696	7980.99	2.70	971.40	(22.42)
GRUH	511288	323.55	19.30	53.74	7.83
INDHOTEL	500850	663.05	10.50	61.70	18.97
LLOYDMETAL	512455	77.62	(34.20)	0.25	103.84
OBEROIRLTY	533273	781.91	260.20	209.35	164.20
PIPAVAVDOC	533107	50.53	(80.00)	(293.60)	(318.11)

Country	Monday 18th Jan 16	Tuesday 19th Jan 16	Wednesday 20th Jan 16	Thursday 21th Jan 16	Friday 22th Jan 16
US		TIC Long-Term Purchases , NAHB Housing Market Index .	Building Permits ,CPI m/m , Core CPI m/m , Housing Starts , Crude Oil Inventories .	Philly Fed Manufacturing Index , Unemployment Claims.	Flash Manufacturing PMI , Existing Home Sales , CB Leading Index m/m.
UK/EURO ZONE	Italian Trade Balance ,German Buba Monthly Report .	CPI y/y ,PPI Input m/m , RPI y/y , German ZEW Economic Sentiment ,	Average Earnings Index 3m/y ,Claimant Count Change, Unemployment Rate,	Minimum Bid Rate , ECB Press Conference , Spanish 10-y Bond Auction , French 10-y Bond Auction .	French Flash Manufacturing PMI ,French Flash Services PMI , German Flash Manufacturing PMI , German Flash Services PMI , Flash Manufacturing PMI , Retail Sales m/m, Public Sector Net Borrowing.
INDIA					



(Regn. No. : INP 000004011)

Narnolia Securities Ltd.

Narnolia Research Lab

Stellar IT Park | 5th Floor | Office Space No. 6 | Tower-II Ind Plot No. C-25 | Sector-62 | Noida | Ph : 0120-4215110

Central Strategy Desk - Kolkata

124 | 1st Floor | 7/1 Lords Sinha Road | Kolkata - 71
Ph : 033-22821500 | M : 93347 14418, 98302 69810