

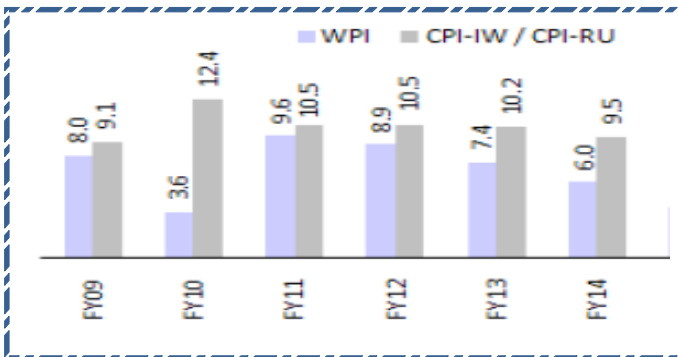
Quote of the Day

"The line separating investment and speculation, which is never bright and clear, becomes blurred still further when most market participants have recently enjoyed triumphs. Nothing sedates rationality like large doses of effortless money." **Warren Buffett**

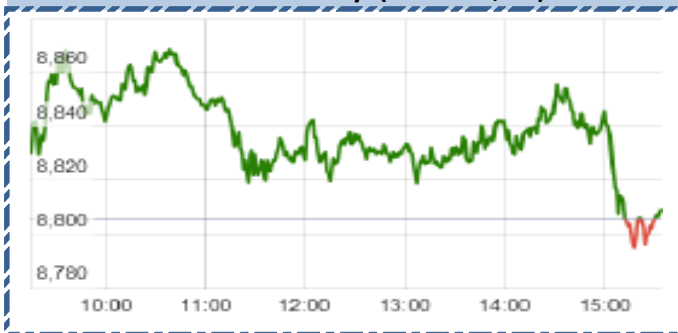
SGX NIFTY : 8855
(15 pts Up)

Chart of the Day

WPI & CPI Trend



Index Action-Nifty (16th Feb, 15)



Index

Contents	Page	Coverage
News	2	UPDATE
Result Q3FY15	3	UPDATE
Economic Calendar	3	UPDATE

MARKET

Name	Value	Change
Sensex	29135.88	40.95
Nifty	8809.35	3.85
DOW	18047.58	28.23
NASDAQ	4899.27	5.43
CAC	4753.99	2.04
DAX	10895.62	(27.61)
FTSE	6898.13	41.08
NIKKIE	18158.96	171.98
HANG SENG	24833.49	48.61
EW ALL SHARE	14743.83	1.38

INSTITUTIONAL TURNOVER

FII			
Investor	Buy(Cr.)	Sale(Cr.)	Net(Cr.)
16th Feb	3707.54	3,890.34	(182.80)
Feb,15	49099.22	52,693.30	(3594.08)
2015	154250.43	1,47,238.27	7012.16
DII			
Investor	Buy(Cr.)	Sale(Cr.)	Net(Cr.)
16th Feb	1525.22	1,244.45	280.77
Feb,15	20914.71	18,356.42	2558.29
2015	56228.36	61,551.84	(5323.48)

COMMODITY PRICE

COMMODITY/CURRENCIES	Value	
GOLD	26219.00	↓
SILVER	36314.00	↓
CRUDEOIL	54.10	↑
COPPER	354.30	↓
NATURALGAS	169.20	↓
DOLLAR/RS.	62.16	↑
EURO/RS.	70.94	↓
POUND/RS.	95.48	↓

Narnolia Securities Ltd.

Markets Snapshot

Top Price Performers

Top Performers 1D	% Change	Top Performers 1W	% Change	Top Performers 1M	% Change
PETRONENGG	20.00	RICOHQ	51.26	NTCIND	93.54
MANAKSIA	20.00	AUSTRAL	43.14	ISFT	75.39
REPRO	20.00	IL&FSENGG	39.76	SHREYAS	71.34
INFINITE	19.95	GEORGFISCH	36.48	SPARC	59.10
SUZLON	19.84	PETRONENGG	36.00	HDIL	47.53

Worst Price Performers

Worst Performers 1D	% Change	Worst Performers 1W	% Change	Worst Performers 1M	% Change
ALMONDZ	(17.63)	ALMONDZ	(30.26)	PRITHVI	(46.83)
BILPOWER	(15.33)	STRAUSIND	(21.79)	SVCRES	(42.37)
FIRSTOBJ	(15.27)	XLENERGY	(21.06)	CENTRUM	(40.04)
CESC	(12.15)	PRITHVI	(20.71)	STRAUSIND	(39.80)
DIAPOWER	(12.07)	MEGH	(20.09)	FARMAXIND	(38.85)

Top News :

- **Jaiprakash Power Ventures** bagged the Amelia (North) mine in Madhya Pradesh quoting Rs 712 per tonne, the highest among 11 firms including Adani Power , BALCO and Essar Power. Bids are underway on the fourth day of auction for another two coal blocks - Ardhamgram in West Bengal and Chotia in Chhattisgarh to be given to firms in non power sector. Jaiprakash Power the highest bidder at (Rs) 712 (a tonne) for Amelia North," Coal Secretary Anil Swarup tweeted.

- **Zydrus** completes single rising dose Phase I studies for its oral HIF inhibitor, ZYAN1 for treating Anemia and initiates multiple dosing studies

- **Hindalco Clarification** : news regarding " " Hindalco bags Kathautia mine for Rs 228cr" . Hindalco Industries Ltd replied stating " We state that we have participated in the e-auction for Kathautia coal mine held on February 15, 2015 in accordance with the Coal Mines (Special Provisions) Second Ordinance, 2014/Coal Mines (Special Provisions) Rules, 2014.

The results of the bid are yet to be communicated by the concerned authority.

- **Sun Pharmaceutical Industries** , Dilip Sanghvi, has agreed to buy a 23 percent stake in Indian wind turbine maker Suzlon Energy for about USD 290 million . Sanghvi, India's second-richest man, will pay Rs 1800 crore through Dilip Sanghvi Family and Associates (DSA) for 1 billion new shares in Suzlon, issued by way of a preferential allotment.

- **Suven Life Sciences** secures 4 (four) Product Patents for their NCE's through New mechanism of action - H3 Inverse Agonist in Australia, Canada, Japan and New Zealand

- **Crompton Greaves Ltd** wins INR 119 crore order from NTPC, India's largest generation utility .

- **January wholesale price index inflation** drops to negative 0.39 percent from 0.11 percent in December . Jan Food Article Inflation @ 8% Vs 5.2% (MoM) . Jan Non Food Article Inflation @ -4.07% Vs -3.06% (MoM) . Jan Primary Article Inflation @ 3.27% Vs 2.17% (MoM) . Jan Fuel & Power Infaltion @ -10.69% Vs -7.82% (MoM) . Jan Vegetable Inflation @ 19.47% Vs -4.78% (MoM) . The November WPI data has been revised further lower to - 0.17 percent from zero.

- **Japan's GDP price index** rose to a seasonally adjusted annual rate of 2.3%, from 2.0% in the preceding quarter. Analysts had expected Japan's GDP price index to fall to 1.9% in the last quarter.

- **Israeli GDP** rose to a seasonally adjusted annual rate of 7.2%, from 0.6% in the preceding quarter whose figure was revised up from 0.2%. Analysts had expected Israeli GDP to rise 2.6% last quarter.

- **Japan's GDP price index** rose to a seasonally adjusted annual rate of 2.3%, from 2.0% in the preceding quarter. Analysts had expected Japan's GDP price index to fall to 1.9% in the last quarter.

- **Swiss PPI** fell to a seasonally adjusted -0.6%, from -0.4% in the preceding month. Analysts had expected Swiss PPI to fall -0.6% last month.

Result Calendar Q3FY15

Bse Coade	Company Name	Date	Bse Coade	Company Name	Date
507180	KESARENT-\$	17-Feb-15	500249	KSBPUMPS	20-Feb-15
523457	LINDEINDIA	17-Feb-15	500674	SANOFI	20-Feb-15
500425	AMBUJACEM	18-Feb-15	520113	VESUVIUS	24-Feb-15
523371	MAWANASUG	18-Feb-15	500870	CASTROLIND	25-Feb-15
500472	SKFINDIA	18-Feb-15	523888	VRWODAR	27-Feb-15
590031	DENORA	19-Feb-15	500166	GOODRICKE	28-Feb-15
504959	STOVACQ	19-Feb-15	511626	RRFIN	14-Dec-15

Economic Calendar

	Monday 16-Feb-15	Tuesday 17-Feb-15	Wednesday 18-Feb-15	Thursday 19-Feb-15	Friday 20-Feb-15
US		Empire State Manufacturing Index . Mortgage Delinquencies , NAHB Housing Market Index .	Building Permits , PPI m/m , Core PPI m/m , FOMC Meeting Minutes , Industrial Production m/m .	Unemployment Claims , Philly Fed Manufacturing Index , Crude Oil Inventories ,	Flash Manufacturing PMI
UK/EURO ZONE	Eurogroup Meetings , German Buba Monthly Report , Trade Balance .	CPI y/y , PPI Input m/m , German ZEW Economic Sentiment , ECOFIN Meetings	Average Earnings Index 3m/y , Claimant Count Change , German 10-y Bond Auction , Claimant Count Change , MPC Official Bank Rate Votes .	CBI Industrial Order Expectations , ECB Monetary Policy Meeting Accounts .	French Flash Manufacturing PMI , French Flash Services PMI , German Flash Manufacturing PMI , German Flash Services PMI , Flash Manufacturing PMI
INDIA	WPI				

Result Q3FY15

NSE Code	BSE Code	Sales (Cr.)	Sales Growth(%)	PAT(Cr.)	PAT Growth (%)
SUZLON	532667	4977.00	(1.50)	(6539.00)	(508.10)
SUNPHARMA	524715	4276.60	(0.80)	1425.07	(6.90)
RAJESHEXPORT	531500	12432.00	147.50	171.20	86.80
20MICRONS	533022	70.97	(0.40)	(2.40)	(658.14)
ARSSINFRA	533163	113.16	(58.70)	(1.46)	75.54
AARYAGLOBL	531731	0.32	(88.50)	0.09	(96.67)
ABHICAP	532057	1.25	171.70	0.67	179.17
ADHUNIK	532727	162.47	(62.50)	(116.03)	(2707.42)
ADIFINCHM	530117	37.19	(6.00)	2.95	(46.27)
ABCIL	500057	276.45	(3.60)	3.41	(79.16)
AHLUCONT	532811	267.16	11.00	13.57	453.88
AHMEDFORGE	513335	669.76	27.40	37.52	5.75
AISHWARYA	532975	9.44	54.00	(0.29)	75.42
AJMERA	513349	58.38	714.20	6.21	800.00
AKSHOPTFBR	532351	94.13	104.30	10.04	296.84
AKSCHEM	524598	45.97	30.00	2.43	(42.69)
ALCHEM	526707	83.27	(63.70)	6.38	(10.89)
AREALTY	532114	0.08	(99.80)	1.51	221.28
AIML	534064	155.14	16.80	0.30	(21.05)
ADSL	532875	54.00	(16.80)	(7.81)	(265.00)
ALLSEC	532633	33.13	(32.50)	(3.64)	43.10
ALMONDZ	531400	7.66	(69.80)	(1.98)	(270.70)

ALOKTEXT	521070	3592.21	(2.90)	25.86	(73.69)
ALPGRAPH	531720	0.16	60.00	0.01	200.00
ALPSINDUS	530715	159.42	(28.50)	(39.23)	(36.50)
AMBASARABH	500009	4.96	34.40	(6.48)	1.37
AMTEKAUTO	520077	1118.94	24.60	70.81	(9.26)
AMTEKINDIA	532282	821.41	23.60	54.92	(8.39)
ANANTRAJ	515055	73.04	(53.00)	11.91	(49.80)
ANSALAPI	500013	217.84	0.70	5.97	64.46
ANUHPHR	506260	66.32	(0.70)	5.70	32.25
ARCHIDPLY	532994	63.08	14.90	1.31	11.97
ARCHIES	532212	51.96	(1.90)	1.46	(32.41)
LIFELINE	506113	8.82	(8.50)	0.47	27.03
ARNAVCORP	531467	4.15	336.80	0.08	14.29
ASAHIINDIA	515030	495.37	(8.30)	9.38	738.10
ASAHIIND	514482	91.27	38.10	0.24	0.00
ASAHISONG	532853	66.50	(16.80)	5.15	21.18
AHLEAST	533227	25.86	7.80	3.97	(24.52)
ASTRAZEN	506820	108.20	(9.00)	(13.41)	(982.24)
AVANCE	512149	32.16	25.00	0.30	42.86
BEML	500048	576.89	(26.40)	(11.42)	(307.26)
BLBLIMITED	532290	59.94	42.20	(0.96)	(157.83)
BSELINFRA	532123	0.11	(47.60)	0.28	366.67
BABA	532380	85.09	9250.50	(2.48)	(2655.56)
BAFNAPHARM	532989	23.62	(49.40)	(4.65)	(522.73)
BAJAJHIND	500032	1160.97	48.40	(280.84)	27.82
BANG	532946	19.78	(47.40)	(1.60)	(401.89)
BANARISUG	500041	133.29	(31.20)	1.15	(82.14)
BVCL	532916	38.90	47.00	0.86	127.00
BATAINDIA	500043	537.22	(3.10)	34.95	(33.74)
BEDMUTHA	533270	76.96	71.90	(2.09)	(186.30)
BHAGYNAGAR	512296	65.57	22.10	0.44	(26.67)
BHEL	500103	6197.96	(28.20)	212.60	(69.40)
BHARATRAS	590021	93.70	3.90	4.80	(18.51)
BIL	526666	119.50	39.60	3.61	52.32
BINNY	514215	2.14	(11.60)	0.64	103.34
BIRLACOT	533006	31.49	(1.50)	(2.05)	90.46
BIRLAPREC	522105	38.30	8.50	0.48	71.43
BIRSHLEDU	511607	0.27	(83.20)	(1.69)	21.76
BLISSGVS	506197	85.81	43.00	17.99	69.40
BLUECOAST	531495	32.17	1.40	(1.46)	32.72
BODALCHEM	524370	175.70	(30.70)	12.75	158.25
BRFL	532678	880.07	6.90	(22.76)	(6.01)
BUTTERFLY	517421	118.27	(51.10)	0.29	(95.07)
CESC	500084	1249.00	3.70	111.00	3.74
CEATFIN	511272	0.49	250.00	(16.84)	(15.18)
CTE	532801	6.29	19.60	0.40	(41.18)
CANTABIL	533267	40.08	27.80	1.41	229.36
CAPRIHANS	509486	64.73	3.60	1.94	55.20
CAREERP	533260	20.30	22.10	1.79	(59.90)
CHEMFALKAL	506894	27.98	(8.60)	3.48	(35.32)
CHENNPETRO	500110	9436.25	(16.90)	(680.52)	(603.02)
CIMMCO	505230	1.71	(96.30)	(9.54)	(1222.35)

CLNINDIA	506390	232.31	(17.20)	844.07	13937.21
CLARIS	533288	182.61	23.10	89.85	406.20
COMPUSOFT	532339	12.30	(31.40)	1.27	(53.99)
CCCL	532902	147.20	(32.70)	(42.11)	39.89
CONCOR	531344	1451.79	17.10	301.08	20.64
CRANESSOFT	512093	93.55	0.90	(20.87)	24.40
CRAVATEX	509472	41.15	(13.40)	0.27	(76.52)
CUBIFIN	511710	0.89	67.90	(1.94)	(746.67)
CYBERMEDIA	532640	3.70	(42.30)	(0.54)	(172.00)
DBSTOCKBRO	530393	2.26	24.90	0.79	38.60
DCW	500117	258.28	(22.10)	(33.73)	(474.36)
DATAMATICS	532528	213.40	5.20	11.78	(16.90)
DEEPAKFERT	500645	818.48	(19.30)	1.25	(98.06)
DHARSUGAR	507442	67.64	(54.00)	(27.90)	(45.77)
GEORGFISCH	500068	87.81	37.80	16.08	74.59
DOLATINVES	505526	4.59	96.20	2.64	13100.00
DWARKESH	532610	153.89	(16.10)	(23.44)	25.61
EASTSILK	590022	15.47	(31.90)	(2.96)	77.84
EFFTXT	512207	5.10	(30.70)	0.07	(41.67)
ELECTHERM	526608	465.68	72.70	(100.30)	(18.14)
ELPROINTL	504000	9.26	20.60	(0.74)	(57.45)
EDL	532920	100.13	28.20	0.93	212.05
EMPEESUG	500132	23.77	(52.60)	(104.02)	(726.87)
EMPOWER	504351	29.05	9.90	0.26	(10.34)
ENERGYDEV	532219	5.09	(54.20)	0.24	155.81
ESCORTS	500495	1046.37	(9.80)	35.69	(21.66)
SHREEKRPET	514118	59.97	(51.10)	(50.80)	(30.06)
ESSDEE	532787	243.04	37.40	11.04	(20.10)
ESTER	500136	212.86	(7.90)	(2.54)	(398.82)
EVERONN	532876	6.16	(45.10)	(18.55)	14.28
FAGBEARING	505790	429.50	9.10	39.92	14.35
S Software Solutions L	532666	23.15	(48.40)	(12.52)	21.60
FACORALL	532656	0.00	(100.00)	(4.72)	(412.58)
FEDDERLOYD	500139	310.22	7.90	8.62	(48.20)
FERROALLOY	500141	163.44	0.00	1.68	(21.50)
FACT	590024	558.24	(20.50)	(107.91)	(806.68)
FIEMIND	532768	202.88	7.90	10.09	(1.85)
FINCABLES	500144	582.06	3.40	38.19	56.07
FLEXITUFF	533638	288.68	9.40	(0.19)	(117.80)
FCEL	533400	369.97	69.70	(21.45)	(133.60)
GMM	505255	59.55	8.40	4.53	9.95
GTOFFSHORE	532786	268.79	18.30	(16.58)	(167.73)
GPTINFRA	533761	82.01	(6.90)	1.92	0.00
GARDENSILK	500155	638.17	(15.90)	(54.88)	(32.21)
GARWARPOLY	500655	205.89	(10.60)	0.64	(69.52)
GEMINI	532318	13.98	45.30	(6.15)	4.21
GILLANDERS	532716	216.78	(17.90)	2.55	(82.95)
GITANJALI	532715	1752.31	38.60	39.43	1599.57
GLAXO	500660	650.86	2.10	45.30	(61.24)
GLENMARK	532296	657.26	23.60	116.73	99.85
GBLINFRA	531463	5.39	247.70	0.13	(69.05)
GLOBUSSPR	533104	155.57	24.90	0.11	10.00

GOENKA	533189	34.89	(24.30)	1.28	487.88
GOKUL	532980	1244.49	(21.70)	2.98	(60.58)
GOLDENGOEN	530579	27.62	682.40	1.14	46.15
GOLDENTOBC	500151	11.17	(35.50)	(8.87)	(60.69)
GOLDIAM	526729	89.41	(8.70)	0.13	(97.50)
GOLDTECH	531439	17.66	(7.70)	0.50	(52.80)
GONTERPEIP	504701	34.24	(24.20)	(7.68)	(460.58)
GRAPHITE	509488	314.08	(27.70)	20.40	(51.61)
GRAUWEIL	505710	103.80	8.30	8.45	28.03
GREENFIRE	590057	0.16	6.70	(0.88)	64.08
GREENCREST	531737	0.66	(90.40)	0.93	520.00
AUSTRAL	533016	0.76	(88.10)	(3.73)	31.31
GUJRATGAS	523477	598.35	(23.30)	76.92	(15.10)
GMDCLTD	532181	305.88	8.90	79.68	(3.18)
HBSTOCK	532216	2.54	30.30	1.27	(3.79)
HMT	500191	14.42	(32.20)	(23.37)	28.38
HOVS	532761	3.31	0.30	0.02	110.00
HTMEDIA	532662	605.50	4.20	63.97	(4.60)
HARITASEAT	590043	68.43	18.00	2.18	603.23
HARRMALAYA	500467	84.77	(22.70)	1.27	(86.55)
HATHWAY	533162	239.15	1.90	(58.05)	(57.49)
HITECHGEAR	522073	115.53	25.20	5.40	31.39
HCIL	500184	326.95	(2.40)	(9.46)	(143.47)
HIRECT	504036	20.76	(5.80)	(2.02)	(8.60)
HINDALCO	500440	8603.03	18.30	359.36	7.60
HINDMILL	509895	34.19	(7.30)	(1.63)	(308.97)
HINDCOMPOS	509635	37.71	6.00	6.07	9.76
HINDDORROL	509627	62.98	(2.90)	(60.08)	(102.02)
HOCL	500449	47.27	29.40	(86.23)	(81.38)
HINDPETRO	500104	51106.15	(7.80)	(325.38)	81.23
HINDTINWRK	530315	69.94	(12.20)	1.83	22.00
HINDNATGLS	515145	478.03	13.50	(61.67)	26.62
Hitech Plast Ltd.	526217	115.75	(1.90)	2.34	9.90
HONDAPOWER	522064	155.12	2.60	12.16	72.48
HOTELEELA	500193	213.60	5.70	(125.04)	(24.31)
HUBTOWN	532799	128.45	4.80	19.39	(39.48)
IL&FSENGG	532907	679.63	45.70	76.52	233.12
IL&FSTRANS	533177	1953.88	(0.60)	129.06	17.50
ISMTLTD	532479	350.65	(1.40)	(66.81)	24.37
ITI	523610	160.46	3.60	(85.55)	15.07
INDIACEM	530005	1040.22	0.20	(11.68)	(2880.95)
ISIBARS	513361	117.31	(18.30)	0.57	(57.46)
IBREALEST	532832	7.41	(61.50)	3.10	484.91
INDIANCARD	509692	16.52	(7.90)	(1.60)	(166.39)
IOC	530965	107073.60	(9.00)	(2636.80)	(174.25)
INDICAP	532745	6.18	10.40	2.27	299.10
INDORAMA	500207	659.58	11.80	(58.40)	(159.97)
INDOPACIF	531565	1.69	0.00	0.22	69.23
IGL	532514	944.41	(9.10)	108.20	20.95
INDPRUD	501298	0.87	(14.70)	0.70	(26.32)
INFINITE	533154	486.53	8.10	48.43	98.70
INSECTICID	532851	148.98	(22.00)	8.34	23.19

INSILCO	500211	13.52	(12.90)	(0.61)	92.15
INTLNKP	526512	0.03	200.00	(0.24)	(4.35)
INTLCONV	509709	17.95	(52.10)	0.54	(79.07)
INVENTURE	533506	6.04	(10.70)	0.10	(91.00)
JBFIND	514034	2402.38	12.60	21.73	526.20
JCT	500223	245.23	9.80	0.51	(16.39)
JKIL	532940	303.43	11.20	23.89	21.27
JMDTELEFILM	511092	96.01	55.90	0.73	7200.00
JAYAGROGN	524330	153.24	(5.90)	2.32	(89.38)
JAYNECOIND	522285	703.03	(18.70)	(44.53)	(286.47)
JAYTEX	512233	136.08	12.50	(73.07)	(7791.58)
JETKINGQ	517063	6.18	(9.50)	0.54	(14.29)
JEYPORE	590054	35.89	8.70	(22.01)	(100.64)
JINDALHOT	532624	61.36	(21.90)	(1.05)	86.24
JINDALPOLY	500227	549.50	(6.90)	0.19	(96.49)
JSL	532508	2973.55	(1.30)	(341.98)	(13.77)
JINDWORLD	531543	180.01	5.20	6.60	(8.21)
KCP	590066	153.64	7.10	1.01	329.55
KNRCON	532942	213.56	2.20	14.88	10.55
KSE	519421	229.14	12.90	11.22	68.98
SHREEKRPOL	514221	95.34	(26.90)	(85.45)	(73.36)
KABRAEXTRU	524109	52.05	(7.20)	1.10	5.77
KAKATCEM	500234	36.21	(7.20)	4.80	220.00
KANSNST	513456	55.60	(5.90)	0.34	466.67
KEMROCK	526015	6.06	(83.90)	(14.91)	(157.96)
KERALAYUR	530163	7.65	15.00	0.63	152.00
KESORAMIND	502937	1214.11	(2.50)	(244.60)	(177.07)
KHAITANELE	504269	81.40	(34.50)	(17.01)	(237.50)
KHOBSURAT	535730	0.31	(82.90)	0.13	(55.17)
KILBUNENGG	522101	38.27	63.60	1.63	143.28
KILITCH	524500	3.80	148.40	(0.75)	(192.59)
TIMEXWATCH	500414	43.15	6.90	(1.51)	48.64
KIRIINDUS	532967	152.45	30.20	31.45	18.90
KOTHARIPRO	530299	1029.85	10.20	9.87	(84.99)
KWALITY	531882	1286.22	12.60	36.12	12.42
LAKSHMIMIL	502958	50.37	(9.80)	0.66	(37.74)
LITL	532778	2181.45	(9.00)	(616.62)	(16.40)
LINCOPH	531633	67.53	27.50	2.59	(21.50)
LOKHSG	500256	0.90	(84.00)	(3.09)	(935.14)
LOTUSCHO	523475	13.49	11.50	(0.13)	89.43
LOVABLE	533343	41.47	5.80	3.81	19.44
LOYALTEX	514036	351.72	(11.10)	0.93	(78.52)



Narnolia Securities Ltd

124, 1st floor 7/ 1, Lords Sinha Road Kolkata 700071, Ph 033-22821251 Toll Free no : 1-800-345-4000

email: research@narnolia.com,

website : www.narnolia.com

Risk Disclosure & Disclaimer: This report/message is for the personal information of the authorized recipient and does not construe to be any investment, legal or taxation advice to you. Narnolia Securities Ltd. (Hereinafter referred as NSL) is not soliciting any action based upon it. This report/message is not for public distribution and has been furnished to you solely for your information and should not be reproduced or redistributed to any other person in any form. The report/message is based upon publicly available information, findings of our research wing "East wind" & information that we consider reliable, but we do not represent that it is accurate or complete and we do not provide any express or implied warranty of any kind, and also these are subject to change without notice. The recipients of this report should rely on their own investigations, should use their own judgment for taking any investment decisions keeping in mind that past performance is not necessarily a guide to future performance & that the the value of any investment or income are subject to market and other risks. Further it will be safe to assume that NSL and /or its Group or associate Companies, their Directors, affiliates and/or employees may have interests/ positions, financial or otherwise, individually or otherwise in the recommended/mentioned securities/mutual funds/ model funds and other investment products which may be added or disposed including & other mentioned in this report/message.