

SGX NIFTY : 7196 ( 60 Pt Up)

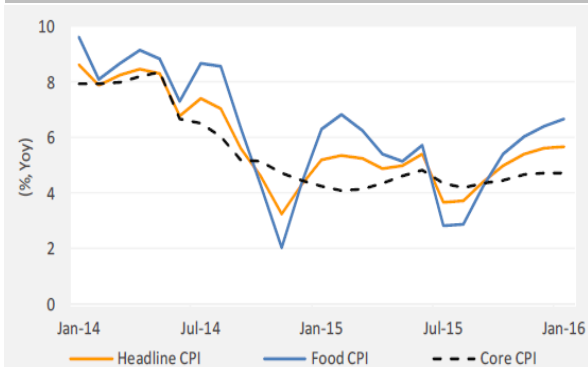
**Quote of the Day**

"Some people seem to think there's no trouble just because it hasn't happened yet. If you jump out the window at the 42nd floor and you're still doing fine as you pass the 27th floor, that doesn't mean you don't have a serious problem. I would want to address the problem right now."

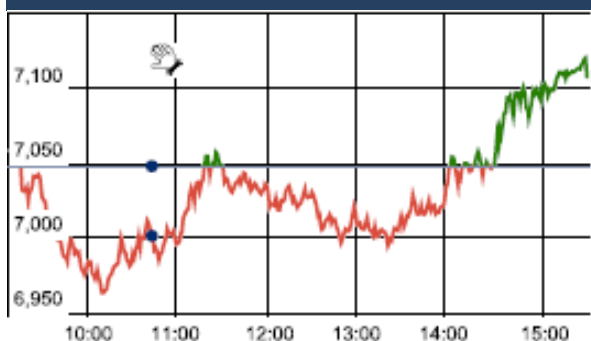
Charlie Munger

**Chart of the Day**

**CPI Trend**



**Index Action Nifty ( 17th Feb 16 )**



**Index**

Contents	Page	Coverage
News	2	Update
Economic Calendar	3	Update

**Market**

Name	Value	Change
Sensex	23,381.87	189.90
Nifty	7108.45	60.20
DOW	15,973.84	313.66
NASDAQ	4,534.06	98.10
CAC	4,233.47	122.81
DAX	9,377.21	242.10
FTSE	6,030.20	168.15
NIKKIE	16,229.20	392.84
HANG SENG	19,323.52	398.55
EW ALL SHARE	12324.35	77.64

**Instituional Turnover**

**FII**

Investor	Buy(Cr.)	Sale(Cr.)	Net(Cr.)
17-Feb-16	3029.01	3589.01	(560.00)
Feb,16	42377.71	49261.09	(6883.38)
2016	113869.63	135109.02	(21239.39)

**DII**

Investor	Buy(Cr.)	Sale(Cr.)	Net(Cr.)
17-Feb-16	1511.72	1127.19	384.53
Feb,16	25868.12	20603.20	5264.92
2016	67572.59	49209.98	18362.61

**Commodity Price**

Commodity/Currencies	Value	
GOLD	28888.00	↓
SILVER	37197.00	↓
CRUDEOIL	29.51	↓
COPPER	313.70	↑
NATURALGAS	132.50	↓
DOLLAR/RS.	68.39	↑
EURO/RS.	76.17	↑
POUND/RS.	97.80	↑

## Market Snapshot

### Top Price Performers

Top Performers 1D	% Change	Top Performers 1W	% Change	Top Performers 1M	% Change
BIRLACOT	25.00	NETWORK	27.10	NDTV	62.34
JUSTDIAL	18.60	LLOYDMETAL	19.31	INFODRIVE	54.05
ESL	16.88	PFOCUS	18.76	STOREONE	51.64
CHENNPETRO	13.60	INFODRIVE	18.75	LLOYDMETAL	33.92
VALECHAENG	13.37	BANKBARODA	17.75	RUSHIL	30.74

Worst Performers 1D	% Change	Worst Performers 1W	% Change	Worst Performers 1M	% Change
SHARRESLTD	(11.48)	PDUMJEPULP	(58.97)	PDUMJEPULP	(54.27)
SHREERAM	(11.42)	EDL	(31.38)	AMTEKINDIA	(48.02)
ALMONDZ	(10.13)	SUPREMEINF	(31.23)	AFL	(42.23)
TRICOM	(9.76)	INTLCONV	(29.62)	RSSOFTWARE	(40.70)
DSKULKARNI	(9.17)	AMTEKINDIA	(29.07)	SHREYAS	(38.61)

## Top News

- **Dr Reddy's** will buyback around 44.85 lakh shares, accounting for about 2.6 percent of the existing paid up capital of the company, for up to Rs 1,569.4 crore. The company's board has approved a proposal to buyback shares, subject to the approval of shareholders, for an aggregate of amount not exceeding Rs 1,569.4 crore at a price not more than Rs 3,500 per share under the open market route
- **Mahindra & Mahindra (M&M)** is looking to enhance its market share in the utility vehicles segment beyond 40 percent. The company is banking on the KUV100, which has crossed 21,000 bookings a month after launch, and its another new model TUV300, to gain additional volumes.
- **IRB Infrastructure Developers** said it expects to sign a concession agreement for the ambitious Rs 10,050-crore Zozila Pass tunnel in Jammu and Kashmir by March. Company will be signing the concession agreement for the project by March and in the next six months, Company hope to complete the financial closure. The company had bagged the contract from the Ministry of Road Transport and Highways for construction, operation and maintenance of the longest tunnel in South-East Asia, the Zozila Pass tunnel in Jammu and Kashmir.
- **Valecha Engineering** has won orders worth Rs 400 crore for the rehabilitation and upgradation of Chhattisgarh's NH-43 and for constructing rail flyover (harbour line) at Kurla in connection with Mumbai CST-Kurla 5th and 6th lines project.
- **Thomas Cook India** says it is likely to post a positive bottom line during the fourth quarter after completion of Kuoni consolidation. Elaborating on the pilot project inked with Airbnb, Iyer says internal research suggests the experiential holiday concept is catching up fast in India, as travellers today seek varied experiences than being confined to a hotel room. The Airbnb project will be launched in Mumbai and Pune for the time being and rolled out to other cities over the next quarter. Company, however, declined any comments on the financial arrangements with Airbnb.
- **BHEL** has emerged as the lowest bidder for the 1,320 MW thermal power project worth USD 1.6 billion in Bangladesh and may be awarded the same by the end of this month. The tender for the project was floated by Bangladesh India Friendship Power Company Private Ltd (BIFPCL), a 50:50 joint venture between NTPC and Bangladesh Power Development Board (BPDB).
- **Motherson Sumi** is in talks with Wilbur Ross to buy IAC for USD 750-800 million . IAC is International Automotive Components . Company is the business of car interiors
- **U.K. Unemployment Rate** remained unchanged at a seasonally adjusted 5.1%, from 5.1% in the preceding month. Analysts had expected U.K. Unemployment Rate to fall to 5.0% last month.
- **U.K. Office of National Statistics said that Average hourly earnings + bonus** fell to a seasonally adjusted annual rate of 1.9%, from 2.1% in the preceding month whose figure was revised up from 2.0%. Analysts had expected Average hourly earnings + bonus to fall to 1.9% last month.
- **South African CPI** rose to a seasonally adjusted annual rate of 0.8%, from 0.3% in the preceding quarter. Analysts had expected South African CPI to rise 0.5% in the last quarter.
- **Japan's Core Machinery Orders** rose to 4.2%, from -14.4% in the preceding month. Analysts had expected Japan's Core Machinery Orders to rise to 4.7% last month.
- **Canadian manufacturing sales** rose to a seasonally adjusted 1.2%, from 1.0% in the preceding month. Analysts had expected Canadian manufacturing sales to rise 0.7% last month.

**Economic Calendar**

Country	Monday 15th Feb 16	Tuesday 16th Feb 16	Wednesday 17th Feb 16	Thursday 18th Feb 16	Friday 19th Feb 16
<b>US</b>	TIC Long-Term Purchases	Empire State Manufacturing Index , Mortgage Delinquencies , NAHB Housing Market Index.	Building Permits ,PPI m/m , FOMC Meeting Minutes , Industrial Production m/m , Capacity Utilization Rate , Housing Starts, FOMC Member Bullard Speaks.	Philly Fed Manufacturing Index ,Unemployment Claims , CB Leading Index m/m , Natural Gas Storage , Crude Oil Inventories .	CPI m/m ,Core CPI m/m .
<b>UK/EURO ZONE</b>	Trade Balance	German Constitutional Court Ruling , CPI y/y , German ZEW Economic Sentiment , ZEW Economic Sentiment.	Average Earnings Index 3m/y , Claimant Count Change ,	ECB Monetary Policy Meeting Accounts , Current Account , French 10-y Bond Auction .	Retail Sales m/m , Public Sector Net Borrowing , Consumer Confidence .
<b>INDIA</b>	WPI Data .				