

SGX NIFTY : 7547 (58 Pt Up)

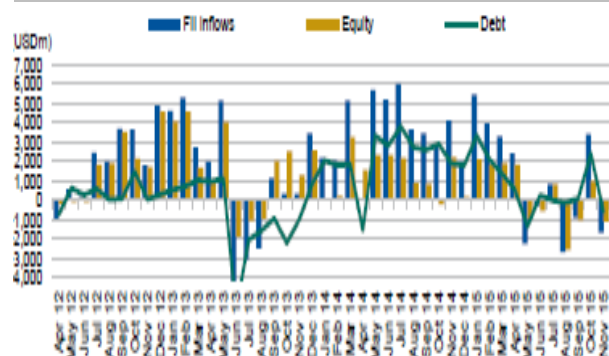
Quote of the Day

"You ought to be able to explain why you're taking the job you're taking, why you're making the investment you're making, or whatever it may be. And if it can't stand applying pencil to paper, you'd better think it through some more. And if you can't write an intelligent answer to those questions, don't do it."

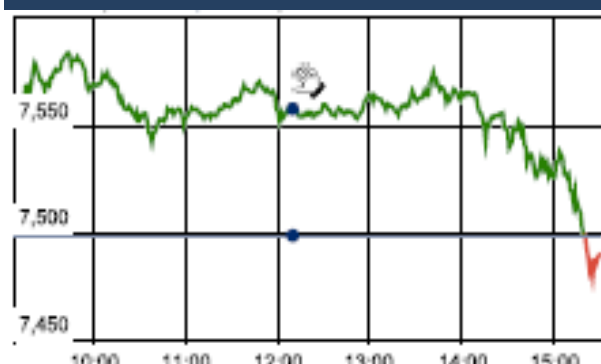
Warren Buffett

Chart of the Day

FII Inflow



Index Action Nifty (17th Mar 16)



Index

Contents	Page	Coverage
News	2	Update
Economic Calendar	3	Update

Market

Name	Value	Change
Sensex	24,677.37	(5.11)
Nifty	7512.55	13.80
DOW	16,639.97	(57.32)
NASDAQ	4,774.98	11.01
CAC	4,442.89	(20.11)
DAX	9,892.20	(91.21)
FTSE	6,201.12	25.63
NIKKEI	16,679.77	(256.61)
HANG SENG	20,580.11	76.30
EW ALL SHARE	12930.93	25.86

Instituional Turnover

FII

Investor	Buy(Cr.)	Sale(Cr.)	Net(Cr.)
17-Mar-16	4997.97	4253.48	744.49
Mar,16	8313.90	8174.00	139.90
2016	79805.82	94021.93	(14216.11)

DII

Investor	Buy(Cr.)	Sale(Cr.)	Net(Cr.)
17-Mar-16	1945.25	2113.63	(168.38)
Mar,16	2450.61	3309.54	(858.93)
2016	44155.08	31916.32	12238.76

Commodity Price

Commodity/Currencies	Value	
GOLD	29362.00	↑
SILVER	38120.00	↑
CRUDEOIL	36.91	↑
COPPER	338.90	↑
NATURALGAS	127.70	↑
DOLLAR/RS.	66.75	↓
EURO/RS.	75.42	↑
POUND/RS.	96.40	↓

Market Snapshot

Top Price Performers

Top Performers 1D	% Change	Top Performers 1W	% Change	Top Performers 1M	% Change
TRF	19.85	VADILALIND	36.19	RAMKY	98.30
OCL	15.68	DHARSUGAR	30.33	PRAKASHCON	92.60
VOLTAMP	14.36	SASKEN	29.99	DWARKESH	87.74
MARKSANS	14.06	SMOBILITY	27.42	UTTAMSUGAR	62.83
COMMEXTECH	12.62	USHAMART	25.10	SASKEN	60.09

Worst Performers 1D	% Change	Worst Performers 1W	% Change	Worst Performers 1M	% Change
RUSHIL	(17.74)	RUSHIL	(23.08)	SHRENUJ	(36.53)
COMFINTE	(13.33)	SHRENUJ	(21.62)	KEMROCK	(30.47)
BAGFILMS	(10.90)	COMMEXTECH	(21.09)	FACORALL	(29.81)
KIRIINDUS	(8.77)	INFODRIVE	(18.52)	COMMEXTECH	(29.27)
QUADRANT	(8.06)	LLOYDMETAL	(18.32)	MURLIIND	(28.85)

Top News

- **CCL Products Mgt Guideline** : Company is looking to expand the business, but will take a decision only by the second quarter of FY17 . The government of Andhra Pradesh is insisting that we should do something here in India . Company will definitely expand but the expansion will take place - final decision we will make in the second quarter. In June - July we should be able to be more clearer

- **Deep Industries** has received notification of award for hiring of gas dehydration system for four (04) production installations for a period of 5 years at ONGC Rajamundry Asset viz. Tatipaka GCS, Kesanapalli GCS, KPDA EPT & Endamuru GCS . Total estimated value of this project is Rs 246.88 crore.

- **Orchid Pharma** has received final approval from USFDA for Rasagiline tablets. The company has got an approval for its ANDA (Abbreviated New Drug Application) for Rasagiline tablets 0.5 mg and 1 mg. The company has got an approval for its ANDA (Abbreviated New Drug Application) for Rasagiline tablets 0.5 mg and 1 mg. The company expect to launch this product in Q4 of FY16-17. This tablets are indicated for the treatment of the signs and symptoms of idiopathic parkinson's disease

- **Hitachi Group** has set up an ATM manufacturing firm in India with an investment of Rs 100 crore to cash in on the growing number of banking users in the country. Hitachi-Omron Terminal Solutions, which is globally developing the group's cash recycling ATM business, has set up Hitachi Terminal Solutions India in Bengaluru for manufacturing ATMs in the country.

- **DLF** sold its shopping mall at Saket in the national capital to its wholly-owned subsidiary for Rs 904.5 crore as part of its strategy to consolidate and monetise the rental assets. Company the Board has "approved sale of 'DLF Place Saket', a shopping mall, having built up area of 5.16 lakh sq ft along with land parcel to Nambi Buildwell Pvt Ltd, a wholly-owned subsidiary of the company

- **Bharti Airtel** has acquired Videocon Telecom for Rs 4,428 crore. Bharti Airtel will get rights to use 2X5 MHZ in 1800 band allocated to Videocon by the Government of India, Ministry of Communication & IT, Department of Telecommunication (DoT) on April 5, 2013.

- **SEBI has granted the certificate of registration to IRB Infrastructure Investment Trust Fund (InvIT)**, to carry out the activities as an InvIT. A domestic InvIT can raise long-term funds from unit holders, helping developers unlock value in their operational or completed projects or repay debt associated with those projects

- **Marksans** said that UK health regulator allowed company to manufacture critical products at Goa plant. After company's response to observations, UK MHRA issued a restricted good manufacturing practice (GMP) certificate, allowing the company to continue manufacturing and marketing of critical products for the UK markets

- **U.S. current account balance** fell to a seasonally adjusted -125.3B, from -129.9B in the preceding month whose figure was revised down from -124.1B. Analysts had expected U.S. current account balance to fall -118.9B last month.

- **Canadian wholesale sales** remained unchanged at a seasonally adjusted 0.0%, from 2.0% in the preceding month. Analysts had expected Canadian wholesale sales to rise 0.2% last month.

- **U.S. Department of Labor said the number of individuals filing for initial jobless** benefits in the week ending March 12 increased by 7,000 to a seasonally adjusted 265,000 from the previous week's total of 258,000. Analysts expected jobless claims to rise by 10,000 to 268,000 last week.

- **Hong Kong Unemployment Rate** remained unchanged at a seasonally adjusted 3.3%, from 3.3% in the preceding month. Analysts had expected Hong Kong Unemployment Rate to remain unchanged at 3.3% last month.

- **Euro zone CPI** remained unchanged at a seasonally adjusted annual rate of -0.2%, from -0.2% in the preceding month. Analysts had expected Euro zone CPI to remain unchanged at -0.2% last month.

Economic Calendar

Country	Monday 14th Mar 16	Tuesday 15th Mar 16	Wednesday 16th Mar 16	Thursday 17th Mar 16	Friday 18th Mar 16
US	Import Prices m/m ,NAHB Housing Market Index , TIC Long-Term Purchases.	Core Retail Sales m/m ,PPI m/m , Retail Sales m/m , Core PPI m/m , Empire State Manufacturing Index , Business Inventories m/m .	Building Permits , CPI m/m , Core CPI m/m , Housing Starts , Capacity Utilization Rate , Industrial Production m/m , Crude Oil Inventories , FOMC Economic Projections , FOMC Statement , Federal Funds Rate , FOMC Press Conference.	Unemployment Claims , Current Account ,CB Leading Index m/m ,Natural Gas Storage.	Philly Fed Manufacturing Index.
UK/EURO ZONE	Industrial Production m/m , CB Leading Index m/m.	Employment Change q/q.	Average Earnings Index 3m/y , Claimant Count Change , Unemployment Rate , Annual Budget Release .	Final CPI y/y , Final Core CPI y/y , Italian Retail Sales m/m , MPC Official Bank Rate Votes , Monetary Policy Summary , Official Bank Rate ,Asset Purchase Facility , MPC Asset Purchase Facility Votes .	German PPI m/m .
INDIA	WPI Data .				



(Regn. No. : INP 000004011)

Narnolia Securities Ltd.

Narnolia Research Lab

Stellar IT Park | 5th Floor | Office Space No. 6 | Tower-I/Ind Plot No. C-25 | Sector-62 | Noida | Ph : 0120-4215110

Central Strategy Desk - Kolkata

124 | 1st Floor | 7/1 Lords Sinha Road | Kolkata - 71
Ph : 033-22821500 | M : 93347 14418, 98302 69810