

SGX NIFTY : 7902 (29 Pt Down)

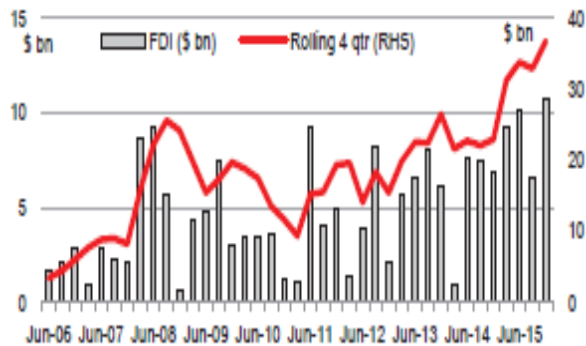
Quote of the Day

"Surprise and shock are endemic to the system, and people should always arrange their affairs so that they will survive such events. They will end up richer that way than focusing all the time on getting rich."

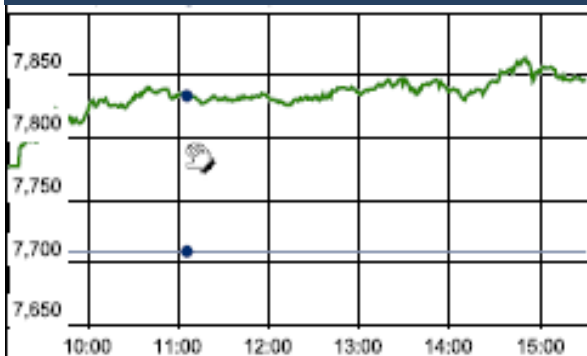
Peter Bernstein

Chart of the Day

FDI Trend



Index Action Nifty (13th Apr 16)



Index

Contents	Page	Coverage
News	2	Update
Economic Calendar	3	Update

Market

Name	Value	Change
Sensex	25,626.75	481.16
Nifty	7850.45	141.50
DOW	17,897.60	(28.97)
NASDAQ	4,938.22	(7.67)
CAC	4,495.17	(16.34)
DAX	10,051.57	(42.08)
FTSE	6,343.75	(21.35)
NIKKEI	16,384.32	(459.39)
HANG SENG	21,129.86	(186.79)
EW ALL SHARE	13602.63	191.79

Instituional Turnover

FII

Investor	Buy(Cr.)	Sale(Cr.)	Net(Cr.)
13-Apr-16	4923.76	4279.49	644.27
Mar,16	28318.89	27416.85	902.04
2016	279459.30	280567.95	(1108.65)

DII

Investor	Buy(Cr.)	Sale(Cr.)	Net(Cr.)
13-Apr-16	2519.32	2249.43	269.89
Mar,16	12543.56	12801.57	(258.01)
2016	126034.68	118733.82	7300.86

Commodity Price

Commodity/Currencies	Value	
GOLD	28959.00	↑
SILVER	38507.00	↑
CRUDEOIL	39.87	↑
COPPER	317.18	↓
NATURALGAS	127.70	↓
DOLLAR/RS.	66.64	↑
EURO/RS.	75.24	↓
POUND/RS.	94.43	↓

Market Snapshot

Top Price Performers

Top Performers 1D	% Change	Top Performers 1W	% Change	Top Performers 1M	% Change
BIRLACOT	25.00	KIRIINDUS	78.86	KIRIINDUS	126.29
LLOYDMETAL	20.00	UTTAMSUGAR	56.49	UTTAMSUGAR	119.73
SAGCEM	19.98	LLOYDMETAL	50.75	DHARSUGAR	104.70
SIMPLEX	19.96	RANASUG	43.42	THIRUSUGAR	98.41
PBAINFRA	19.94	CINEPRO	36.55	KAKATCEM	93.48

Worst Performers 1D	% Change	Worst Performers 1W	% Change	Worst Performers 1M	% Change
IPCALAB	(10.61)	VIVIMEDLAB	(79.17)	VIVIMEDLAB	(78.94)
SUJANAUNI	(10.34)	RAINBOWPAP	(24.60)	RAINBOWPAP	(61.37)
WEBELSOLAR	(10.00)	HINDCOMPOS	(16.11)	RICOHQ	(42.44)
SURAJLTD	(7.45)	RICOHQ	(14.46)	GLOBOFFS	(34.13)
HINDCOMPOS	(7.03)	ASHOKA	(14.45)	IVRCLINFRA	(33.16)

Top News

- **A US grand jury** has slapped two companies of India's Tata group -- Tata Consultancy Services (TCS) and Tata America International Corp -- with a USD 940 million fine in a trade secret lawsuit filed against them. Tata Consultancy Services Ltd and Tata America International Corp. must pay USD 240 million to Epic Systems for allegedly ripping off its software.

- **Bharat Heavy Electricals** is getting big EPC contract from country's largest power generation company NTPC . NTPC's joint venture utility in Bangladesh has awarded engineering, procurement and construction contract to Indian equipment maker BHEL for an estimated value of USD 2.4 billion . This contract involves setting up two units of 650 MW each along with civil construction at Rampal in Bagerhat district,

- **Orchid Pharma Ltd** has informed that Orchid received the Establishment inspection report (EIR) from USFDA based on the successful inspection closure for the API manufacturing facility located at Alathur, Kancheepuram District, India. The facility was inspected by USFDA in the month of August 2015.

- **DLF** initiated the process to sell promoters' 40 per cent stake in the rental arm, a deal estimated at Rs 12,000-14,000 crore. DLF had in October announced that its promoters will sell their stake in the DLF Cyber City Developers Ltd (DCCDL), which holds the bulk of office and retail complexes.

- **Suzlon Group** has received maiden order of 105 MW (50 units of S97 120m 2100kW WTG with Hybrid Tower) from Greenko Group with over 1GW of operating assets. The project will be located in Andhra Pradesh, India and will be progressively commissioned by January 2017.

- **L&T Finance** will raise Rs 300 crore by issuing debentures on private placement basis. The company intends to issue secured, redeemable, non-convertible debentures of Rs 300 crore on private placement basis

- **Alkem Laboratories** has been accused by Germany's health regulator of fudging data on clinical trials of an antibiotic and brain disorder drug, becoming the third Indian firm to be scrutinised since 2014 for suspected manipulation of trial data.

- **Great Eastern Shipping Company Ltd** (GE Shipping) has contracted to buy a Japan-built second hand vessel which will be delivered to it in the current quarter. The company now owns a fleet of 32 vessels. The GE Shipping has contracted to buy a second hand very large gas carrier (1996 built) of about 76,931 cbm. The Japan-built vessel will be delivered to the company in Q1 FY 2016-17

- **NTPC** has supplied surplus power of up to 100 MW to Gujarat, which is facing power shortage due multiple outage of their generating units. NTPC, through its subsidiary NTPC Vidyut Vyapar Nigam Ltd (NVVN) has supplied Un-Requisitioned Surplus (URS) power from Dadri Stage-I to Gujarat Urja Vitaran Nigam Ltd (GUVNL) under short-term bilateral mode on April 10 and 100 MW

- **U.S. retail sales fell to a seasonally adjusted -0.3%**, from -0.1% in the preceding month . Analysts had expected retail sales to rise 0.1% last month.

- **U.S. PPI fell to a seasonally adjusted -0.1%**, from -0.2% in the preceding month. Analysts had expected U.S. PPI to rise 0.2% last month.

- **Euro zone industrial production** fell to a seasonally adjusted -0.8%, from 1.9% in the preceding month whose figure was revised down from 2.1%. Analysts had expected Euro zone industrial production to fall -0.7% last month.

- **U.S. API Weekly Crude Stock** rose to 6.200M, from -4.300M in the preceding week. Analysts had expected U.S. API Weekly Crude Stock to rise 1.000M last week.

- U.S. TIC long term purchases rose to a seasonally adjusted 72.0B, from -11.9B in the preceding month whose figure was revised up from -12.0B. Analysts had expected U.S. TIC long term purchases to rise 32.2B last month.

- U.S. consumer sentiment fell to a seasonally adjusted 89.7, from 91.0 in the preceding month. Analysts had expected UoM consumer sentiment to rise to 92.0 last month.

Result Calendar Q4FY16

BSE Code	Company Name	Date	BSE Code	Company Name	Date
531247	ALPHA	14-Apr-16	513262	SSWL	23-Apr-16
509162	INDAG	14-Apr-16	533179	PERSISTENT	24-Apr-16
512455	LLOYDSME	14-Apr-16	500002	ABB	25-Apr-16
523229	BHARATSE	15-Apr-16	531201	SHILCTECH	25-Apr-16
526612	BLUEDART	15-Apr-16	513010	TATASPONGE	25-Apr-16
532772	DCBBANK	15-Apr-16	524661	WELCURE	25-Apr-16
500209	INFY	15-Apr-16	500215	ATFL	26-Apr-16
532742	PAUSHAKLTD	15-Apr-16	532215	AXISBANK	26-Apr-16
506981	BLUECHIPT	16-Apr-16	531340	BERVINL	26-Apr-16
506935	CONTCHM	16-Apr-16	532523	BIOCON	26-Apr-16
507960	GUJHOTE	16-Apr-16	500670	GNFC	26-Apr-16
517526	INDITALIA	16-Apr-16	534816	INFRATEL	26-Apr-16
500213	ITHL	16-Apr-16	532313	MAHLIFE	26-Apr-16
526187	ASHRAM	18-Apr-16	532500	MARUTI	26-Apr-16
500186	HINDOILEXP	18-Apr-16	500355	RALLIS	26-Apr-16
530139	KREONFIN	18-Apr-16	500407	SWARAJENG	26-Apr-16
500253	LICHSGFIN	18-Apr-16	539268	SYNGENE	26-Apr-16
532819	MINDTREE	18-Apr-16	506395	COROMANDEL	27-Apr-16
531626	OROSMITHS	18-Apr-16	523708	EIMCOELECO	27-Apr-16
521228	TATIAGLOB	18-Apr-16	505700	ELECON	27-Apr-16
532540	TCS	18-Apr-16	523754	EPCIN	27-Apr-16
500092	CRISIL	19-Apr-16	500086	EXIDEIND	27-Apr-16
511288	GRUH	19-Apr-16	505790	FAGBEARING	27-Apr-16
534623	JUPITERIN	19-Apr-16	500150	FOSECOIND	27-Apr-16
523704	MASTEK	19-Apr-16	532345	GATI	27-Apr-16
511766	MUTHTFN	19-Apr-16	509675	HIL	27-Apr-16
511559	TIMESGTY	19-Apr-16	500165	KANSAINER	27-Apr-16
520066	JAYBARMARU	20-Apr-16	532400	KPIT	27-Apr-16
500405	SUPPETRO	20-Apr-16	534690	LAKSHVILAS	27-Apr-16
509966	VSTIND	20-Apr-16	522034	SHANTIGEAR	27-Apr-16
507685	WIPRO	20-Apr-16	532648	YESBANK	27-Apr-16
532175	CYIENT	21-Apr-16	500425	AMBUJACEM	28-Apr-16
500188	HINDZINC	21-Apr-16	520119	ASAL	28-Apr-16
532187	INDUSINDBK	21-Apr-16	511196	CANFINHOME	28-Apr-16
511585	REGTRUS	21-Apr-16	500096	DABUR	28-Apr-16
509930	SUPREMEIND	21-Apr-16	500233	KAJARIACER	28-Apr-16
506597	AMAL	22-Apr-16	507300	RAVALSUGAR	28-Apr-16
522134	ARTSONEN	22-Apr-16	500408	TATAELXSI	28-Apr-16
532792	CAIRN	22-Apr-16	501242	TCIFINANCE	28-Apr-16
500089	DICIND	22-Apr-16	505412	WENDT	28-Apr-16
526227	FILATEX	22-Apr-16	500027	ATUL	29-Apr-16
500180	HDFCBANK	22-Apr-16	511243	CHOLAFIN	29-Apr-16
502330	IPAPPM	22-Apr-16	500033	FORCEMOT	29-Apr-16
532756	MAHINDCIE	22-Apr-16	511676	GICHSGFIN	29-Apr-16
511736	USHDI	22-Apr-16	532174	ICICIBANK	29-Apr-16
516030	YASHPPR	22-Apr-16	523457	LINDEINDIA	29-Apr-16
532720	M&MFIN	23-Apr-16	500674	SANOFI	29-Apr-16
517447	RSSOFTWARE	23-Apr-16	531003	SWRNASE	29-Apr-16

530243	MANGASOF	30-Apr-16	526775	VALIANT	20-May-16
516062	NATPLY	30-Apr-16	500266	MAHSCOOPER	23-May-16
532504	NAVINFLUOR	30-Apr-16	532978	BAJAJFINSV	24-May-16
500452	NEPCAGRO	30-Apr-16	500034	BAJFINANCE	24-May-16
500301	NEPCMICON	30-Apr-16	523736	DPL	24-May-16
531077	NEPCPAPER	30-Apr-16	523642	PIIND	24-May-16
521192	NEPCTEX	30-Apr-16	532977	BAJAJ-AUTO	25-May-16
500010	HDFC	02-May-16	500490	BAJAJHLDNG	25-May-16
500264	MAFATIND	02-May-16	500660	GLAXO	25-May-16
532424	GODREJCP	03-May-16	533217	HMVL	25-May-16
532638	SHOPERSTOP	03-May-16	532777	NAUKRI	25-May-16
533228	SKSMICRO	04-May-16	532662	HTMEDIA	26-May-16
532513	TVSELECT	04-May-16	500387	SHREECEM	26-May-16
520113	VESUVIUS	04-May-16	500414	TIMEX	26-May-16
532953	VGUARD	04-May-16	506655	SUDARSCHEM	27-May-16
531162	EMAMILTD	05-May-16	508939	BLCISER	28-May-16
507815	GILLETTE	05-May-16	511092	JMDTELEFILM	28-May-16
500730	NOCIL	05-May-16	533202	NITESHEST	28-May-16
500459	PGHH	05-May-16	524038	VENLONENT	28-May-16
502420	ORIENTPPR	06-May-16	500067	BLUESTARCO	30-May-16
500085	CHAMBLFERT	11-May-16	539131	CLLIMITED	30-May-16
531213	MANAPPURAM	12-May-16	531737	GREENCREST	30-May-16
500790	NESTLEIND	12-May-16	532851	INSECTICID	30-May-16
524378	JMDEPACKR	13-May-16	539446	KRISHFAB	30-May-16
526947	LAOPALA	13-May-16	506113	LIFELINE	30-May-16
534742	ZUARI	13-May-16	531319	MARUTISE	30-May-16
500780	ZUARIGLOB	13-May-16	535514	PRIMECAPM	30-May-16
532166	ALKASEC	14-May-16	530125	SAMRATPH	30-May-16
532133	IFGLREFRAC	14-May-16	531411	TUNITEX	30-May-16
500133	ESABINDIA	19-May-16	521226	UNIROYAL	30-May-16
533023	WABCOINDIA	19-May-16	531831	UNISH	30-May-16
522113	TIMKEN	20-May-16	539123	VBIND	30-May-16
			511690	WARNER	30-May-16

Earning Estimate Q4FY16

BSE Code	NSE Code	Sales (Cr.)	Sales Growth	PAT (Cr.)	PAT Growth
500188	HINDZINC	2804	-32.00	1327	-33.90
532792	CAIRN	1690	-36.90	-40	PL
532175	CYIENT	820	12.30	101	7.60
532819	MINDTREE	1300	41.60	147	14.50
532540	TCS	28457	17.50	6196	4.90
507685	WIPRO	13735	13.10	2215	-2.60
500180	HDFCBANK	7206	19.80	3370	20.10
532187	INDUSINDBK	1203	30.00	628	26.80
511288	GRUH	157	28.10	86	15.70
500253	LICHSGFIN	878	35.10	482	27.50
532720	M&MFIN	936	6.00	258	-22.70

Economic Calendar

Country	Monday 18th April 16	Tuesday 19th April 16	Wednesday 20th April 16	Thursday 21th April 16	Friday 22th April 16
US		Building Permits , Housing Starts.	Existing Home Sales .	Philly Fed Manufacturing Index , Unemployment Claims , HPI m/m, Flash Manufacturing PMI , Flash Services PMI , CB Leading Index m/m , Natural Gas Storage.	
UK/EURO ZONE	German Buba Monthly Report.	German ZEW Economic Sentiment , ZEW Economic Sentiment , Current Account .	Average Earnings Index 3m/y , Claimant Count Change, German PPI m/m , Unemployment Rate , Italian Retail Sales m/m , CBI Industrial Order Expectations .	French Flash Manufacturing PMI , French Flash Services PMI , Spanish Unemployment Rate , German Constitutional Court Ruling , German Flash Manufacturing PMI , German Flash Services PMI , Flash Manufacturing PMI , Flash Services PMI , Minimum Bid Rate , ECB Press Conference .	German Ifo Business Climate , Belgian NBB Business Climate .
INDIA					



(Regn. No. : INP 000004011)

Narnolia Securities Ltd.

Narnolia Research Lab

Stellar IT Park | 5th Floor | Office Space No. 6 | Tower-II Ind Plot No. C-25 | Sector-62 | Noida | Ph : 0120-4215110

Narnolia Securities Ltd.

201 | 2nd Floor | Marble Arch Building | 236B-AJC Bose Road Kolkata-700 020 Ph : 033-40501500
Email : narnolia@narnolia.com website :www.narnolia.com