

SGX NIFTY : 8501.50 ( 17.50 Pt Up )

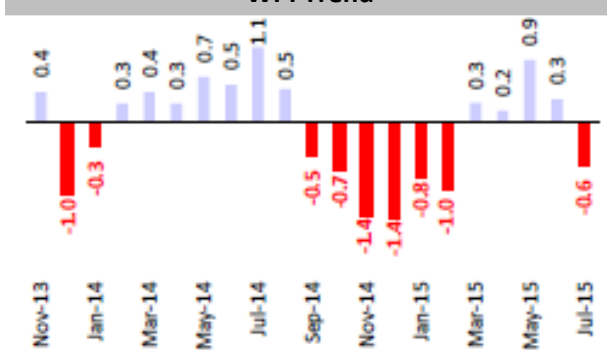
**Quote of the Day**

"Mathematics is ordinarily considered as producing precise and dependable results; but in the stock market the more elaborate and abstruse the mathematics, the more uncertain and speculative is the conclusions we draw there from."

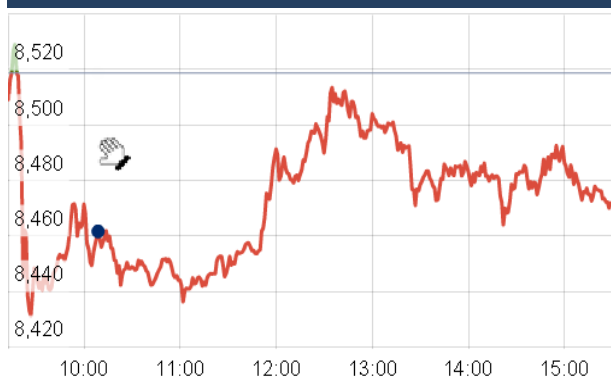
Benjamin Graham

**Chart of the Day**

WPI Trend



**Index Action Nifty ( 17th Aug 15 )**



**Index**

Contents	Page	Coverage
News	2	Update
Economic Calendar	3	Update

**Market**

Name	Value	Change
Sensex	27,878.27	(189.04)
Nifty	8477.30	(41.25)
DOW	17,545.18	67.78
NASDAQ	5,091.70	43.26
CAC	4,984.83	28.36
DAX	10,940.30	(44.81)
FTSE	6,550.30	(0.44)
NIKKEI	20,578.08	(47.18)
HANG SENG	23,769.85	(44.80)
EW ALL SHARE	14706.35	10.29

**Institutional Turnover**

**FII**

Investor	Buy(Cr.)	Sale(Cr.)	Net(Cr.)
17th Aug,15	3507.74	3365.40	142.34
Aug,15	45266.52	47020.38	(1753.86)
2015	766758.07	746360.72	20397.35

**DII**

Investor	Buy(Cr.)	Sale(Cr.)	Net(Cr.)
17th Aug,15	1471.16	1287.44	183.72
Aug,15	18855.10	17054.55	1800.55
2015	295643.34	268140.25	27503.09

**Commodity Price**

Commodity/Currencies	Value	
GOLD	26020.00	↑
SILVER	35805.00	↑
CRUDEOIL	42.31	↓
COPPER	336.70	↓
NATURALGAS	178.50	↓
DOLLAR/RS.	65.32	↑
EURO/RS.	72.37	↓
POUND/RS.	101.85	↓

## Market Snapshot

### Top Price Performers

Top Performers 1D	% Change	Top Performers 1W	% Change	Top Performers 1M	% Change
JUBLINDS	20.00	JUBLINDS	40.82	GREENFIRE	143.64
BIRLACORPN	19.27	SHRENUJ	34.86	GMBREW	124.80
TANLA	18.82	GREENFIRE	26.81	RUSHIL	105.17
RAMCOIND	16.31	KGIND	26.72	CHLOGIST	79.48
BANKBARODA	15.15	GRAVISSHO	25.53	HIMATSEIDE	72.04

### Worst Price Performers

Worst Performers 1D	% Change	Worst Performers 1W	% Change	Worst Performers 1M	% Change
TRF	(19.98)	JYOTISTRUC	(39.58)	AMTEKINDIA	(62.16)
KSCL	(16.97)	KSCL	(32.61)	JYOTISTRUC	(39.24)
AHMEDFORGE	(14.48)	IOLCP	(30.11)	ONELIFECAP	(36.49)
PUNJLLOYD	(12.20)	AHMEDFORGE	(30.05)	AHMEDFORGE	(35.85)
EMPEESUG	(11.92)	OISL	(29.00)	FARMAXIND	(34.62)

## Top News

• **Suven Life Sciences Mgt Guideline** : Company said that, with three molecules in clinical development at different stages, growth will be visible from the third quarter onwards. This year is a consolidation phase for the company.

Suven will set up an overseas subsidiary with an initial investment of USD 22-25 million for two years . Suven might invest in small drug development companies in coming quarters.

• **Manappuram Finance Mgt Guideline** : The company saw a sequential growth of 5.3 percent and reduction in cost of funds. The cost of funds was down 35 basis points sequentially, and 99 basis points year-on-year . They currently stood at 11.6% . Talking about the two new subsidiaries that is micro finance and housing finance were now gaining traction and are expected to perform better going forward. The micro finance business has added five new states to its portfolio already besides Kerala and Karnataka . The current assets under management had crossed the Rs 10000 crore market . Gold loan finance company Manappuram Finance first quarter consolidated net profit rose 34.3 percent to Rs 59.30 crore helped by healthy growth in assets under management.. The company had reported a profit after tax of Rs 44.15 crore in the year-ago quarter

• **Punj Lloyd** says the order book for the June quarter was around Rs 3700 crore, compared to Rs 7000 crore for the whole of FY15. Mgt expects the order book for the first half to increase to Rs 10,000 at the very least. Company is confident that the company will be able to meet its standalone revenue guidance of Rs 8000 crore and consolidated revenue guidance of Rs 10,000 crore.

• **Asian Paints** is looking to increase its capacity by 20 percent to 12 lakh kilo litres (KL) per annum by March 2016, which will be mostly powered by a doubling of capacity at its Rohtak facility . The expansion would be driven by capacity enhancement at its Rohtak (Haryana) plant to 4 lakh KL from the existing 2 lakh KL. The expansion is expected to be completed by March 2016

• **Siemens** said it's modernising electricity distribution network in three states - Punjab, Uttarakhand and Haryana - with Smart Grid solutions at a total cost of Rs 75 crore. The objective of these projects is to improve quality and availability of power supply to residents and reduce the downtime in the event of a blackout in the entire grid.

• **Vedanta Ltd** will issue non-convertible debentures (NCD) worth Rs 2,000 crore as the mining conglomerate aims to refinance its debt. Out of the total debt of Rs 79,530 crore, debt in Indian currency is Rs 38,616 crore and the balance Rs 40,914 crore in US dollars. The gross debt comprises loans of Rs 64,825 crore for the long term and Rs 14,705 crore for short-term working capital

• **Credit Suisse (Singapore) Limited** A/C Credit Suisse (Singapore) sold 66,50,000 shares of Gujarat Pipavav Port at Rs 196.80 on the NSE. Kotak Mahindra buys 65 lakh shares of Gujarat Pipavav Port

• **The Federal Reserve Bank of New York** said that its general business conditions index dropped to -14.9 this month from 3.86 in July. Economists had forecast an uptick to 5.0

• **National Statistical Office Thailand** said that **Thai GDP** fell to a seasonally adjusted 2.8%, from 3.0% in the preceding month. Analysts had expected Thai GDP to fall to 2.8% last month.

• **University of Michigan** said that **consumer sentiment** fell to a seasonally adjusted 92.9, from 93.1 in the preceding month. Analysts had expected UoM consumer sentiment to rise to 93.5 last month.

• **U.S. Industrial production** rose to 0.6%, from 0.1% in the preceding month whose figure was revised down from 0.3%. Analysts had expected industrial production to rise 0.3% last month.

• **U.S. core PPI** rose to a seasonally adjusted 0.3%, from 0.3% in the preceding month. Analysts had expected U.S. core PPI to rise 0.1% last month.

• **Euro zone CPI** remained unchanged at a seasonally adjusted annual rate of 0.2%, from 0.2% in the preceding month. Analysts had expected Euro zone CPI to remain unchanged at 0.2% last month.

**Result Calendar Q1FY16**

BSE Code	Company Name	Date	BSE Code	Company Name	Date
532729	UTTAMSUGAR	19-Aug-15	523519	UNIOFFICE	27-Aug-15
505890	KENNAMET	21-Aug-15	517467	MARSONS	29-Aug-15
517044	IDM	26-Aug-15	524038	VENLONENT	31-Oct-15
521234	SRINACHA	27-Aug-15	511626	RRFIN	14-Dec-15

**Result Q1FY16**

NSE Code	BSE Code	Sales Q1FY16(e)	Sales YOY(%)	Sales Q1FY16(e)	PAT YOY(%)
CIPLA	500087	3852.60	41.60	651.00	121.00
RCOM	532712	5493.00	2.60	177.00	34.10
KSCL	532899	664.00	(19.70)	218.00	(5.40)
ABCINDQ	520123	34.20	(10.30)	(1.54)	52.32
ABGHEAVY	520155	19.63	28.10	(1.30)	39.81
ADFFOODS	519183	50.19	(10.40)	0.92	(78.20)
ANGIND	530721	40.81	6.00	1.03	116.20
AADHAARVEN	531611	6.48	38.50	0.08	100.00
AARVEEDEN	514274	215.45	23.60	2.18	234.57
ACRYSIL	524091	35.12	8.10	2.64	(20.00)
AFTEK	530707	7.19	(53.10)	(2.75)	(33.50)
AGARIND	531921	65.00	6.60	2.55	8.50
AHLUCONT	532811	265.04	11.00	18.81	11.37
AISHWARYA	532975	9.58	77.10	0.11	1200.00
AJANTPHARM	532331	340.58	18.50	81.06	38.04
AKZOINDIA	500710	658.40	2.70	45.31	(17.89)
ALBERTDA	524075	84.94	4.40	2.79	45.31
ALCHEM	526707	6.56	(88.70)	(1.79)	41.50
ALKYLAMINE	506767	128.41	1.20	11.99	(3.62)
ALPSINDUS	530715	159.45	0.10	(4.84)	87.00
AMARAJABAT	500008	1144.97	11.30	122.09	15.22
AMBASARABH	500009	1.93	(54.70)	67.71	1130.59
AMRUTANJAN	590006	29.09	13.10	1.70	132.88
AMTEKAUTO	520077	866.32	(18.60)	(157.60)	(283.09)
ANDREWYULE	526173	62.61	9.80	(9.36)	(75.61)
ANKITMETAL	532870	258.32	(28.00)	(44.30)	28.35
ARCHIDPLY	532994	63.10	0.20	1.36	7.09
LIFELINE	506113	2.44	(82.40)	0.43	(21.82)
ASIANILES	532888	193.27	9.70	3.32	(0.90)
ASTAR	531847	832.70	(2.50)	18.43	(6.30)
ATLANTA	532759	7.00	(94.60)	(7.69)	(139.99)
ATLASCYCLE	505029	129.44	(12.10)	(2.56)	(3100.00)
AURUMSOFT	530885	2.28	(19.10)	0.02	300.00
BAGFILMS	532507	5.09	(47.50)	(1.30)	18.24
BEML	500048	590.25	17.70	(74.87)	21.63
BLKASHYAP	532719	172.32	(2.50)	(3.89)	74.98
BPL	500074	6.42	15.50	13.46	2704.17
BAFNAPHARM	532989	23.12	(34.40)	(1.19)	(483.87)
BAJAJHIND	500032	1545.92	57.80	107.20	173.11
BALAJITELE	532382	69.38	57.00	4.51	130.10

ISPATALLOY	513142	211.77	6.60	9.52	
BALLARPUR	500102	1250.54	2.60	(1.99)	(573.80)
BANSWRAS	503722	291.58	(2.70)	1.71	(65.17)
BARTRONICS	532694	8.21	58.50	(9.75)	50.96
BEPL	500052	136.97	(10.00)	8.48	1045.95
BPCL	500547	51966.07	(22.20)	2376.16	95.37
BHUSANSTL	500055	2982.61	6.50	(738.96)	(421.75)
BILENERGY	533321	7.17	(46.30)	(0.49)	66.44
BIRLACORPN	500335	787.44	(10.00)	16.64	(83.28)
BIRLACOT	533006	22.54	(22.20)	(17.35)	(16.29)
BIRLAPREC	522105	37.37	5.40	0.36	1000.00
BIRSHLEDU	511607	0.06	(97.90)	(3.10)	(961.11)
BRAHMINFRA	535693	50.69	(19.10)	(5.58)	54.22
CAMPALLIED	500078	85.94	6.80	5.12	25.18
CAPITALT	511505	12.12	49.60	3.56	123.90
CGCL	531595	45.24	2.90	23.03	1.50
CAREERP	533260	17.52	9.40	2.39	(2.80)
AMTEKINDIA	532282	653.91	(18.10)	(105.58)	(266.42)
CATECH	531682	0.99	28.60	(0.63)	19.23
CTRNIND	509499	1.42	(63.50)	0.11	(15.38)
CEREBRAINT	532413	65.87	17.90	0.23	130.00
CHLOGIST	531977	45.20	30.90	2.19	80.99
CHEVIOT	526817	57.42	11.30	10.36	216.82
CIGNITI	534758	130.34	68.90	10.72	92.10
CIMMCO	505230	22.00	431.40	1.41	135.88
CINELINE	532807	5.07	15.50	0.68	(27.66)
CLUTCHAUTO	505052	11.16	24.60	(1.42)	64.85
COMPUSOFT	532339	14.67	(1.30)	1.56	(36.84)
CCCL	532902	95.35	(53.00)	(37.73)	7.23
CORDSCABLE	532941	59.49	4.50	0.45	80.00
COSMOFILMS	508814	408.94	(7.80)	18.42	372.30
COUNCLB	526550	62.74	(13.00)	(6.20)	(216.33)
CRANESSOFT	512093	92.27	3.10	(35.52)	(120.10)
CYBERMEDIA	532640	11.95	(4.60)	(0.58)	(7.40)
DCM	502820	210.97	(9.80)	1.96	117.40
DCMSRMIND	523369	303.02	(10.00)	(1.63)	(111.99)
DCW	500117	305.06	(2.70)	9.12	21.12
DFM	519588	68.05	9.30	2.09	(22.88)
DLF	532868	2231.15	29.30	121.55	(4.90)
DQE	533176	25.73	24.70	(12.66)	(5.00)
DEEPIND	532760	27.26	1.00	6.73	15.24
DHARSUGAR	507442	72.84	(30.20)	(16.24)	(55.85)
DIAPOWER	522163	399.02	(41.80)	0.57	(98.42)
DIGJAM	503796	33.97	39.40	(2.77)	59.20
DWARKESH	532610	197.23	(25.10)	(56.20)	(1665.46)
ECEIND	532491	29.82	(13.00)	(0.41)	61.32
MUDRA	532820	52.08	36.40	(3.90)	(136.35)
EASTSILK	590022	19.52	37.70	(12.65)	(429.29)
EASUNREYRL	532751	12.38	(47.20)	(11.53)	(126.52)
EDUCOMP	532696	143.23	(0.30)	(85.26)	75.20

EIMCOELECO	523708	25.62	24.70	1.49	7.19
ELECON	505700	97.61	1.80	3.57	185.60
ELECTHERM	526608	488.75	29.20	(62.67)	51.68
ELPROINTL	504000	8.36	(14.30)	(2.78)	(4733.33)
EMMSONS	532038	127.25	(67.90)	(19.53)	(1714.05)
EMPOWER	504351	23.94	18.30	0.22	15.79
ENNORE	512369	50.92	(36.20)	(10.85)	26.34
EPIC	530407	4.77	16.10	0.03	200.00
EROSMEDIA	533261	472.48	95.70	53.35	48.90
ESARIND	531502	0.53	(89.20)	(0.32)	(116.33)
ESSDEE	532787	184.61	1.70	7.04	26.80
ESSARPORTS	500630	411.73	1.10	99.05	7.50
ESSARSHPNG	533704	425.88	(14.20)	(115.71)	17.40
EUROCERA	532823	14.75	36.30	(6.21)	37.65
EVERONN	532876	6.07	(29.70)	(13.47)	25.99
EXCAST	526735	12.48	78.30	0.42	625.00
EXCELINFO	533090	10.53	138.20	0.14	600.00
FARMAXIND	590094	4.82	50.60	(2.51)	(5.02)
FEDDERLOYD	500139	305.93	5.60	5.99	1.35
FACT	590024	430.65	9.50	(117.97)	(33.98)
FILATEX	526227	297.31	(31.90)	3.14	14.60
FCL	533333	16.76	5.70	2.95	76.65
FOMEHOT	503831	12.64	1.50	3.44	34.38
FORTUNEF	530023	34.00	9.30	1.15	88.50
GMRINFRA	532754	2966.01	8.60	(429.45)	27.60
GTOFFSHORE	532786	357.44	56.30	(5.23)	(248.58)
GPTINFRA	533761	104.77	28.10	3.05	48.80
GVKPIL	532708	999.03	40.20	(123.92)	56.00
GANESHHOUC	526367	68.28	11.20	13.17	24.80
GARDENSILK	500155	609.61	(13.80)	(24.89)	23.95
GEMSI	531137	0.54	28.60	0.35	12.90
GILLANDERS	532716	179.01	(12.80)	(2.61)	(214.46)
GITANJALI	532715	1639.78	7.40	15.80	98.24
GBLINFRA	531463	3.34	(57.40)	0.11	(31.25)
GLOBOFFS	501848	106.93	(0.30)	7.53	(61.30)
GLOBALVECT	532773	96.87	(2.20)	8.34	(20.95)
GOENKA	533189	46.92	249.40	3.32	548.65
GOKEX	532630	267.37	(1.60)	(11.06)	(305.13)
GONTERPEIP	504701	25.47	(40.90)	(4.29)	(78.75)
GRAUWEIL	505710	90.44	0.30	7.18	(2.18)
GRAVISSHO	509546	11.32	(1.70)	(0.84)	57.10
AUSTRAL	533016	0.08	(98.30)	(4.37)	(23.45)
GUJAPOLLO	522217	14.44	19.80	1.43	391.84
GIPCL	517300	335.41	(3.30)	54.38	11.96
GMETCOAL	531881	161.04	963.00	0.09	12.50
GAL	533275	46.22	(4.00)	0.25	130.12
HBLPOWER	517271	304.21	6.50	6.71	138.70
HALDYINGL	515147	33.74	(5.50)	3.08	(27.36)
HANUNG	532770	26.80	(8.30)	(198.83)	(51.13)

HATHWAY	533162	264.41	5.70	(43.91)	(4672.83)
HEXATRADEX	534328	3.98	(6.80)	2.42	(7.28)
HIRECT	504036	12.70	2.00	(2.71)	13.69
HINDALCO	500440	8575.27	7.20	107.19	(67.27)
HINDUJAFO	505982	151.37	(9.90)	(98.52)	(113.29)
HGS	532859	738.83	10.90	16.17	(50.20)
HINDMOTORS	500500	0.10	(98.90)	(4.90)	68.75
PAPERPROD	509820	544.84	76.20	19.92	6.70
ICRA	532835	76.99	12.90	16.50	(24.30)
IL&FSENGG	532907	480.05	(11.10)	(60.95)	(65.58)
INDLMETER	517571	55.96	12.50	(1.59)	57.70
IOLCP	524164	137.23	13.20	(17.94)	(1535.20)
IRB	532947	1108.87	9.80	165.95	10.30
IVRCLINFRA	530773	620.29	(25.60)	(187.19)	(18.53)
IMPEXFERRO	532614	85.26	(32.00)	(13.02)	43.22
INDAG	509162	64.12	10.30	8.03	16.21
IOC	530965	101306.82	(18.90)	6435.70	155.09
INDORAMA	500207	642.48	(10.60)	4.91	(77.73)
INDOTECH	532717	41.67	(6.70)	0.75	367.86
INFINITE	533154	469.55	20.80	25.49	(5.00)
INGERRAND	500210	143.62	(2.40)	7.71	(40.92)
INTENTECH	532326	5.21	(40.40)	(5.28)	(823.29)
INVENTURE	533506	7.08	(8.30)	(0.58)	(105.80)
JCT	500223	217.42	(4.50)	0.88	(56.86)
JHS	532771	23.33	158.10	(1.53)	70.20
JMDTELEFILM	511092	46.72	(57.30)	0.44	22.20
JMTAUTOLTD	513691	84.25	(30.70)	1.69	(52.92)
JVLAGRO	519248	1105.50	(7.80)	17.20	1.12
JAIHINDPRO	531339	60.52	67.40	(13.26)	(49.66)
JETAIRWAYS	532617	5220.11	11.40	221.70	201.86
JINDCOT	533103	26.79	(59.10)	(16.17)	(42.30)
JINDALPOLY	500227	720.90	8.00	107.09	118.51
JUBLFOOD	533155	570.69	19.70	29.47	6.27
JYOTI	504076	54.84	(12.80)	(20.96)	10.62
JYOTISTRUC	513250	600.58	(13.00)	(151.97)	(851.60)
KCP	590066	207.25	49.90	34.18	553.32
KNRCON	532942	174.63	(26.20)	15.01	(24.19)
KSE	519421	215.40	(0.30)	2.18	(25.60)
KSK	532997	668.88	58.60	(271.88)	(134.10)
KAKATCEM	500234	38.56	(14.20)	(3.37)	(208.71)
KGL	531687	66.67	22.80	5.18	13.60
KEMROCK	526015	12.54	18.40	(9.75)	56.69
KERALAYUR	530163	7.63	16.70	0.39	39.29
KHAITANELE	504269	83.87	(32.50)	(13.37)	(69.46)
KILBUNENGG	522101	28.48	87.50	1.30	271.43
KILITCH	524500	3.99	(30.10)	(2.49)	(598.00)
KINETICENG	500240	13.66	9.50	(4.17)	21.32
KECL	533193	126.94	(10.60)	(17.85)	21.37
KALPENA	526409	435.21	4.70	9.10	21.33
KOHINOOR	512559	284.12	(13.60)	5.25	17.98

RMS	533482	130.21	(19.50)	5.62	36.70
KWALITY	531882	1411.36	6.30	35.59	4.37
LML	500255	37.56	(27.80)	(22.29)	(6.96)
LAOPALA	526947	51.98	24.00	9.21	50.74
LAKSELECON	504258	46.68	4.00	1.58	(38.04)
LAKSHMIEFL	519570	155.33	(38.40)	(11.81)	(276.53)
LAKPRE	506079	79.79	(12.50)	(2.16)	(626.83)
LITL	532778	1541.72	(40.80)	(300.36)	2.00
LANCORHOL	509048	23.00	(42.80)	2.86	(42.50)
LIBERTSHOE	526596	110.08	7.90	3.42	2.70
LLOYDELENG	517518	729.34	36.70	34.20	55.31
LOHIASEC	590082	10.62	(7.30)	1.96	(30.25)
LOKESHMACH	532740	20.73	(35.20)	(0.85)	(219.72)
LOTUSCHO	523475	13.70	(33.90)	0.32	(51.52)
LOYALTEX	514036	306.57	(11.40)	3.66	46.40
MBLINFRA	533152	612.91	19.50	29.92	25.80
MIC	532850	47.53	25.80	7.38	330.60
MMTC	513377	2040.75	(60.60)	(31.22)	(176.58)
MOIL	533286	184.62	(8.00)	89.88	(15.25)
MVL	532991	6.54	(60.90)	0.42	(27.60)
MAAJTL	511082	20.57	20.30	0.21	50.00
MADHUCON	531497	204.50	35.90	8.59	32.36
MAHASTEEL	513554	81.18	(5.40)	0.61	(14.08)
MTNL	500108	803.63	(6.10)	(744.97)	(1.60)
MAITHANALL	590078	187.80	(16.40)	7.86	(43.45)
MAJESAUTO	500267	31.22	(3.70)	(6.43)	(145.20)
MANAPPURAM	531213	515.37	12.90	55.92	27.12
MANDHANA	533204	350.78	10.90	15.13	(5.79)
MANUGRAPH	505324	33.37	(42.50)	(8.60)	(110.78)
MARG	530543	28.08	(30.30)	(40.03)	15.42
MASTERTR	511768	26.28	(5.80)	2.28	(36.10)
MAXIMAA	526538	4.45	31.70	0.13	550.00
MAYURUNIQ	522249	128.55	3.20	19.41	29.57
MCDHOLDING	532852	3.03	2.40	(1.25)	(131.48)
MBECL	532629	468.16	14.30	(59.55)	(315.85)
AHMEDFORGE	513335	558.12	(14.10)	(66.23)	(214.72)
METKORE	532990	35.75	(44.20)	(2.58)	(410.84)
MLKFOOD	507621	98.33	(3.90)	(2.88)	(105.71)
MIRCELECTR	500279	237.81	(30.60)	2.74	23.98
RMMOHITE	532140	45.33	(16.80)	0.80	(62.26)
MONNETISPA	513446	624.00	(30.20)	(375.35)	(2255.94)
MORGANITE	523160	23.83	6.30	2.55	(1.16)
MOSERBAER	517140	165.25	(38.90)	(133.36)	29.51
MOTOGENFIN	501343	3.16	34.50	0.28	(51.72)
MUDITFN	531919	6.38	(35.10)	0.20	(57.45)
MUKTAARTS	532357	13.23	(47.10)	(1.43)	94.19
NBCC	534309	1149.50	37.10	43.27	33.30
NECLIFE	532649	407.70	6.80	17.41	7.14
NEULANLAB	524558	122.63	19.40	7.30	141.72
NILA	530377	32.25	16.90	3.02	47.32

NITINFIRE	532854	337.90	18.60	20.77	10.50
NUTEK	533015	9.24	(61.60)	(2.51)	(712.20)
OISL	533008	97.58	(71.80)	(34.93)	(87425.00)
OKPLA	526415	14.07	(23.80)	(7.39)	(1243.64)
ONGC	500312	17162.61	7.10	5459.90	14.18
OPTIEMUS	530135	699.84	19.90	7.14	22.05
OFSS	532466	1056.56	(1.50)	329.33	(16.50)
ORIENTCONT	513121	325.26	33.60	14.17	133.80
ORIENTBELL	530365	137.95	(12.20)	0.02	(86.67)

### Economic Calendar

Country	Monday 17th Aug 15	Tuesday 18th Aug 15	Wednesday 19th Aug 15	Thursday 20th Aug 15	Friday 21th Aug 15
<b>US</b>	NAHB Housing Market Index , Empire State Manufacturing Index	Building Permits ,Housing Starts .	CPI m/m , Core CPI m/m , Crude Oil Inventories , FOMC Meeting Minutes .	Unemployment Claims , Flash Manufacturing PMI , Philly Fed Manufacturing Index , Existing Home Sales , CB Leading Index m/m , Natural Gas Storage .	Flash Services PMI .
<b>UK/EURO ZONE</b>	Trade Balance , German Buba Monthly Report .	CPI y/y ,PPI Input m/m ,RPI y/y , Core CPI y/y , HPI y/y .	Current Account , Consumer Confidence ,	French Flash Manufacturing PMI ,French Flash Services PMI , German Flash Manufacturing PMI , German Flash Services PMI , Flash Manufacturing PMI , Flash Services PMI , Retail Sales m/m , Public Sector Net Borrowing .	
<b>INDIA</b>					

## Narnolia Securities Ltd.

### Narnolia Research Lab

Stellar IT Park | 5th Floor | Office Space No. 6 | Tower-IInd Plot No. C-25 | Sector-62 | Noida | Ph : 0120-4215110

### Central Strategy Desk - Kolkata

124 | 1st Floor | 7/1 Lords Sinha Road | Kolkata - 71  
Ph : 033-22821500 | M : 93347 14418, 98302 69810