

SGX NIFTY : 8660 (31 Pt Up)

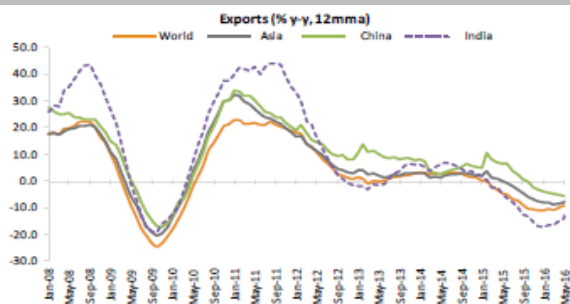
Quote of the Day

"Although I consider myself to be primarily in the quantitative school, the really sensational ideas I have had over the years have been heavily weighted toward the qualitative side where I have had a 'high-probability insight'. This is what causes the cash register to really sing."

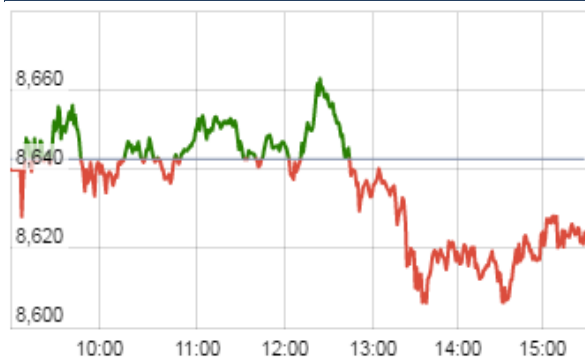
Warren Buffett

Chart of the Day

Export Trend



Index Action Nifty (17th Aug 16)



Index

Contents	Page	Coverage
News	2	Update
Economic Calendar	3	Update

Market

Name	Value	Change
Sensex	28,005.37	(59.24)
Nifty	8624.05	(18.50)
DOW	18,690.40	16.10
NASDAQ	5,228.66	1.55
CAC	4,417.68	(42.76)
DAX	10,537.67	(138.98)
FTSE	6,859.15	(34.77)
NIKKIE	16,670.95	(74.37)
HANG SENG	23,173.83	374.05
EW ALL SHARE	15238.57	(16.76)

Instituional Turnover

FII

Investor	Buy(Cr.)	Sale(Cr.)	Net(Cr.)
17-Aug-16	4033.12	4033.07	0.05
Aug,16	60193.17	53147.65	7045.52
2016	657474.78	635137.03	22337.75

DII

Investor	Buy(Cr.)	Sale(Cr.)	Net(Cr.)
17-Aug-16	1647.46	1736.83	(89.37)
Aug,16	22658.96	27613.73	(4954.77)
2016	271990.29	272221.06	(230.77)

Commodity Price

Commodity/Currencies	Value	
GOLD	31368.00	↓
SILVER	45886.00	↓
CRUDEOIL	46.74	↑
COPPER	319.00	↑
NATURALGAS	176.10	↓
DOLLAR/RS.	66.76	↑
EURO/RS.	75.49	↑
POUND/RS.	87.13	↓

Top Price Performers

Top Performers 1D	% Change	Top Performers 1W	% Change	Top Performers 1M	% Change
PRIMEPRO	19.83	PRIMEPRO	49.46	SAHARAHOUS	108.14
BFINVEST	18.25	GLOBOFFS	36.94	PARABDRUGS	64.32
KOPRAN	16.99	ATLANTA	33.53	KSL	59.36
TREEHOUSE	15.51	HGS	31.98	MANDHANA	56.74
PARACABLES	13.54	INVENTURE	31.83	PRAKASHCON	56.46

Worst Performers 1D	% Change	Worst Performers 1W	% Change	Worst Performers 1M	% Change
DHARSUGAR	(19.33)	JKIL	(35.14)	JKIL	(47.67)
ISIBARS	(13.02)	DHARSUGAR	(31.13)	DHARSUGAR	(46.72)
KANANIIND	(9.80)	MAWANASUG	(26.56)	UGARSUGAR	(38.74)
COMFINTE	(9.52)	STOREONE	(25.40)	DCMSRMIND	(38.74)
MAWANASUG	(9.11)	USHERAGRO	(22.14)	RAJSREESUG	(38.62)

Top News

• **Power Grid Mgt Guideline** : This year we are targeting to cross Rs 500 crore. Similarly in consultancy also we are expecting 20 percent growth. Company is certainly targeting about Rs 28000-30000 crore capitalization . Company has a total order book of Rs 1,44,000 crore. Company has already capitalised Rs 6,700 crore and after that still company has Rs 1,44,000 crore and company have to do capex near about Rs 1,00,000 crore.

• **Jubilant Life Sciences** has had a good run up, still it looks very good for another almost about 30-40 percent run from the current level. Company will see that happening almost every six months of debt level coming down . Company is getting for the pharma business on an SOP basis is significantly lower and that is where that will also come to its true form.

• **Jain Irrigation Mgt Guideline** : Company expects the firm margins to sustain for the rest of the year. Company expects FY17 growth to be around 18% . The rains are very good now, so post October, Company expect lot more demand. Also, some of the government action like making sugarcane mandatory with drip should result into a very strong domestic business.

• **Just Dial Mgt Guideline** : Just Dial has been paying the price for not expanding and executing on the sales side for the last 2 year . The company has taken corrective steps and it should start yielding results leading to double-digit revenue run rate starting from the third quarter this fiscal. The company has added roughly 600 sales force in the first quarter and will add total 2,000-2,500 in FY17. Company expects margin will be under pressure for the next few quarters as marketing and advertising spends will have to be undertaken but says there is nothing to be worried about.

The company currently has Rs 860 crore cash on books but does not have any inorganic plans with cash right now.

• **Piramal Enterprises** has going to acquire US based company. The company's US based wholly owned subsidiary has entered into an agreement to acquire 100 percent stake in Ash Stevens Inc., in an all cash deal for a total consideration of USD 42.95 million with an earn-out consideration of USD 10 million payable over the next six months.

• **Lupin** receives FDA approval for potassium chloride extended-release capsules. Lupin's US subsidiary, Gavis Pharmaceuticals LLC., USA has received final approval for its Potassium Chloride Extended Release Capsules USP, 8 mEq (600 mg) and 10 mEq (750 mg) from the USFDA to market a generic equivalent of Actavis Labs FL, Inc's Potassium Chloride Extended Release Capsules USP, 8 mEq and 10 mEq.

• **DHFL**

-Issue unsecured subordinated perpetual non-convertible debentures worth Rs 200 crore with green shoe option upto Rs 275 crore

-Issue secured redeemable non-convertible debentures worth Rs 140 crore with green shoe option upto Rs 10 crore on private placement basis

• **Uttam Galva Metallics** has signed an investment agreement of \$150 million with China's Tidfore Heavy Equipment Group Co Limited, a deal galvanised by South Korean steel major Posco.

• **Philippines GDP** rose to a seasonally adjusted annual rate of 7.0%, from 6.9% in the preceding month whose figure was revised up from 6.9%. Analysts had expected Philippines GDP to fall to 6.7% last month.

• **Australian employment change** rose to a seasonally adjusted 26.2K, from 7.9K in the preceding month. Analysts had expected Australian employment change to rise 11.0K last month.

• **U.S. Gasoline Inventories** fell to a seasonally adjusted annual rate of -2.724M, from -2.807M in the preceding quarter. Analysts had expected U.S. Gasoline Inventories to fall -1.638M in the last quarter.

• **Russian Unemployment Rate** fell to a seasonally adjusted annual rate of 5.3%, from 5.4% in the preceding month. Analysts had expected Russian Unemployment Rate to remain unchanged at 5.4% last month.

Result Calendar Q1FY17

BSE Code	Company Name	Result Date	BSE Code	Company Name	Result Date
535648	JUSTDIAL	16-Aug-16	500400	TATAPOWER	23-Aug-16
502165	OCL	16-Aug-16	519191	JOLYMER	25-Aug-16
532898	POWERGRID	16-Aug-16	506943	JBCHEPHARM	26-Aug-16
506590	PHILIPCARB	17-Aug-16	500459	PGHH	26-Aug-16
532497	RADICO	17-Aug-16	532240	INDNIPPON	27-Aug-16
530005	INDIACEM	18-Aug-16	500207	INDORAMA	27-Aug-16
532349	TCI	18-Aug-16	526961	TRANSFIN	27-Aug-16
532026	THEWEST	18-Aug-16	532927	ECLERX	29-Aug-16
513428	TRINETRA	18-Aug-16	532181	GMDCLTD	29-Aug-16
523630	NFL	19-Aug-16	532150	INDRAMEDCO	30-Aug-16
509243	TVSSRICHAK	20-Aug-16	535755	ABFRL	31-Aug-16
513599	HINDCOPPER	22-Aug-16	534742	ZUARI	8-Sep-16
507815	GILLETTE	23-Aug-16	500780	ZUARIGLOB	8-Sep-16
521016	ICIL	23-Aug-16	522113	TIMKEN	9-Sep-16
512237	JAICORPLTD	23-Aug-16	524038	VENLONENT	28-Oct-16

Economic Calendar

Country	Monday 15th Aug 16	Tuesday 16th Aug 16	Wednesday 17th Aug 16	Thursday 18th Aug 16	Friday 19th Aug 16
US	Empire State Manufacturing Index , NAHB Housing Market Index , TIC Long-Term Purchases.	Building Permits , CPI m/m , Core CPI m/m , Housing Starts , Capacity Utilization Rate , Industrial Production m/m.	Crude Oil Inventories , FOMC Member Bullard Speaks , FOMC Meeting Minutes.	Philly Fed Manufacturing Index , Unemployment Claims , CB Leading Index m/m , FOMC Member Dudley Speaks.	
UK/EURO ZONE	German Buba Monthly Report	German ZEW Economic Sentiment , ZEW Economic Sentiment , Trade Balance.	Average Earnings Index 3m/y , Claimant Count Change , Unemployment Rate ,.	Current Account , Retail Sales m/m , Final CPI y/y , ECB Monetary Policy Meeting Accounts.	German PPI m/m , Public Sector Net Borrowing .
INDIA		WPI			



(Regn. No. : INP 000004011)

Narnolia Securities Ltd.

Narnolia Research Lab

Stellar IT Park | 5th Floor | Office Space No. 6 | Tower-IIInd Plot
No. C-25 | Sector-62 | Noida | Ph : 0120-4215110

Narnolia Securities Ltd.

201 | 2nd Floor | Marble Arch Building | 236B-AJC Bose Road Kolkata-
700 020 Ph : 033-40501500
Email : narnolia@narnolia.com website : www.narnolia.com