

SGX NIFTY : 7979.50 (39 Pt Up)

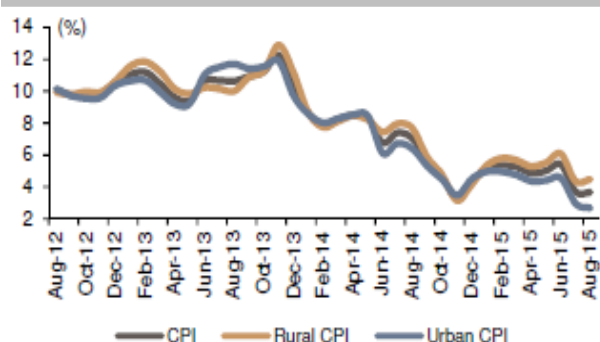
Quote of the Day

"Most businesses change in character and quality over the years, sometimes for the better, perhaps more often for the worse. The investor need not watch his companies' performance like a hawk; but he should give it a good, hard look from time to time."

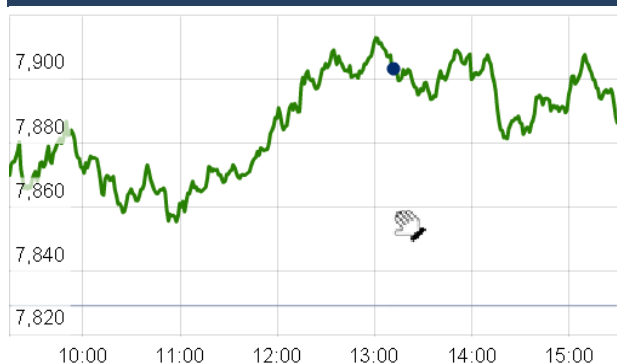
Benjamin Graham

Chart of the Day

CPI Trend



Index Action Nifty (16th Sept 15)



Index

Contents	Page	Coverage
News	2	Update
Economic Calendar	3	Update

Market

Name	Value	Change
Sensex	25,963.97	258.04
Nifty	7899.15	70.05
DOW	16,674.41	(65.21)
NASDAQ	4,893.95	4.71
CAC	4,655.14	9.30
DAX	10,229.58	2.37
FTSE	6,186.99	(42.22)
NIKKEI	18,186.95	(245.32)
HANG SENG	21,980.57	125.94
EW ALL SHARE	13595.71	42.14

Instituional Turnover

FII

Investor	Buy(Cr.)	Sale(Cr.)	Net(Cr.)
16-Sep-15	3812.86	4150.13	(337.27)
Sept,15	33813.20	40540.52	(6727.32)
2015	855770.55	859670.83	(3900.28)

DII

Investor	Buy(Cr.)	Sale(Cr.)	Net(Cr.)
16-Sep-15	1664.14	1240.33	423.81
Sept,15	18743.05	13105.47	5637.58
2015	345041.37	297452.83	47588.54

Commodity Price

Commodity/Currencies	Value	
GOLD	26155.00	↓
SILVER	35930.00	↑
CRUDEOIL	46.81	↓
COPPER	363.25	↓
NATURALGAS	175.80	↓
DOLLAR/RS.	66.46	↑
EURO/RS.	75.51	↓
POUND/RS.	103.09	↑

Market Snapshot

Top Price Performers

Top Performers 1D	% Change	Top Performers 1W	% Change	Top Performers 1M	% Change
INDTODE	19.99	AMTEKAUTO	92.32	ORISSASP	64.09
NBVENTURES	17.44	REIAGROLTD	59.52	DSINVEST	44.91
PGEL	15.12	FARMAXIND	45.45	REIAGROLTD	42.55
CALSREF	14.29	NITINFIRE	36.47	JRG	40.92
AADHAARVEN	10.00	JYOTISTRUC	34.05	SHRGLTR	35.22

Worst Price Performers

Worst Performers 1D	% Change	Worst Performers 1W	% Change	Worst Performers 1M	% Change
GOLDTECH	(13.62)	AMTEKINDIA	(22.40)	AMTEKINDIA	(61.90)
GOKUL	(10.34)	JMDTELEFILM	(21.27)	DECNGOLD	(50.25)
TRICOM	(10.00)	STEERINTER	(17.87)	AHMEDFORGE	(49.48)
JCTEL	(9.76)	BLUECOAST	(14.00)	JMTAUTOLTD	(48.85)
SHRGLTR	(9.59)	IMPEXFERRO	(13.85)	ROLATAN	(48.43)

Top News

- **Five power plants, including two of state-run NTPC and one of Torrent Power** won the government subsidy worth about Rs 278 crore to buy imported LNG to make up for shortfall in domestic supplies. The auction for government support to power stations with inadequate supply of natural gas from domestic fields, Torrent, NTPC and Gujarat Industries Power Co quoted lower tariff than the base rate for generating electricity from imported LNG.

- **TVS Motor Harita Employees Welfare Foundation** has sold over 34.9 lakh shares of TVS Motor for about Rs 81 crore through open market transaction. The shares were sold on an average price of Rs 231.48, valuing the transaction at Rs 80.84 crore.

- **Maruti Suzuki India** plans to kickstart an investor roadshow next month to explain its move for letting parent Suzuki Motor Corp own upcoming plant in Gujarat. Company planning these roadshows probably in October and November subject to investors agreeing to dates which are convenient to them and once the road shows are on, the dates of the polling (on Gujarat plant) can also be announced

- **Power Grid** said its shareholders have approved a proposal to raise up to Rs 14,000 crore through issuance of bonds from domestic and external sources in 2016-17. Shareholders approved the proposal to raise the amount through issue of secured/unsecured, non-convertible, non-cumulative, redeemable, taxable/tax-free, rupee linked bonds under private placement in 2016-17

- **NTPC** are in the fray for the Rs 298 crore government subsidy on offer for plants receiving inadequate domestic natural gas. The power plants can use the subsidy support from the government to buy expensive imported LNG to make up for the fuel deficit

- **JMC Projects** is securing orders worth Rs 702 crore in Bihar and Karnataka. The civil engineering and EPC company has received orders for Bhagalpur Water Supply projects worth approximately Rs 199 crore and building for Central University of Bihar at Gaya approximately Rs 152 crore. It also bagged orders for Karnataka State Highways improvement project Rs 181 crore and two building projects in Bangalore worth approximately Rs 170 crore.

- **Sterlite Power Grid Ventures** has commissioned its Jabalpur Transmission project, which has been set up at an estimated cost of about Rs 1,500 crore. Sterlite Power Grid Ventures (Sterlite Grid), a subsidiary of Pune-based Sterlite Technologies, announces commissioning of its Jabalpur transmission Project. Sterlite Grid charged the 379 km-long 765-kv double circuit Dharamjaygarh-Jabalpur transmission line, the longest 765-kv line in the country

- **Orchid Chemicals and Pharmaceuticals** is exploring various options to cut down interest burden. This plan is to try and reduce the interest burden on the company which will ultimately be beneficial to the company's bottomline

- **The Indian trade deficit** for the month of August has come in almost flat at USD 12.48 billion against USD 12.81 billion month-on-month (MoM), even as imports dipped 9.95 percent to USD 33.74 billion versus USD 35.95 billion MoM.

- **Fed** leaves rates unchanged. September was supposed to be the month the US central bank finally came off its zero interest rate policy, but instead it opted to hold steady for at least one more month.

- **U.S. Natural Gas Storage** rose to a seasonally adjusted annual rate of 73B, from 68B in the preceding month. Analysts had expected U.S. Natural Gas Storage to rise 73B last month.

- **The Department of Labor said the number of individuals filing for initial jobless** benefits in the week ending September 12 decreased by 11,000 to a seasonally adjusted 264,000 from the previous week's total of 275,000.

- **U.S. current account balance** fell to a seasonally adjusted -109.7B, from -118.3B in the preceding month whose figure was revised down from -113.3B.

Economic Calendar

Country	Monday 14th Sept 15	Tuesday 15th Sept 15	Wednesday 16th Sept 15	Thursday 17th Sept 15	Friday 18th Sept 15
US		Core Retail Sales m/m , Retail Sales m/m , Empire State Manufacturing Index , Capacity Utilization Rate , Industrial Production m/m , TIC Long-Term Purchases , Business Inventories m/m .	CPI m/m ,Core CPI m/m , Crude Oil Inventories .	Building Permits ,Unemployment Claims , Current Account , Philly Fed Manufacturing Index , FOMC Economic Projections , FOMC Statement , Federal Funds Rate , FOMC Press Conference .	CB Leading Index m/m
UK/EURO ZONE	Italian Trade Balance , Industrial Production m/m , French CPI m/m .	German ZEW Economic Sentiment , ZEW Economic Sentiment , Employment Change q/q , Trade Balance , CB Leading Index m/m .	Average Earnings Index 3m/y , Claimant Count Change ,Unemployment Rate .	Retail Sales m/m , ECB Economic Bulletin , Italian Trade Balance	Current Account
INDIA	WPI Data .				

Narnolia Securities Ltd.

Narnolia Research Lab

Stellar IT Park | 5th Floor | Office Space No. 6 | Tower-I/Ind Plot No. C-25 | Sector-62 | Noida
| Ph : 0120-4215110

Central Strategy Desk - Kolkata

124 | 1st Floor | 7/1 Lords Sinha Road | Kolkata - 71
Ph : 033-22821500 | M : 93347 14418, 98302 69810