

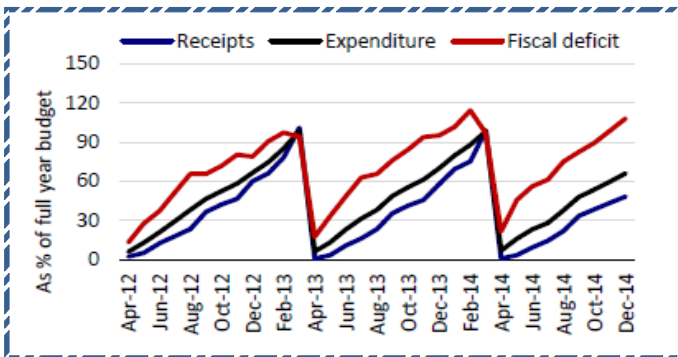
Quote of the Day

"Although I consider myself to be primarily in the quantitative school, the really sensational ideas I have had over the years have been heavily weighted toward the qualitative side where I have had a 'high-probability insight'. This is what causes the cash register to really sing." **Warren Buffett**

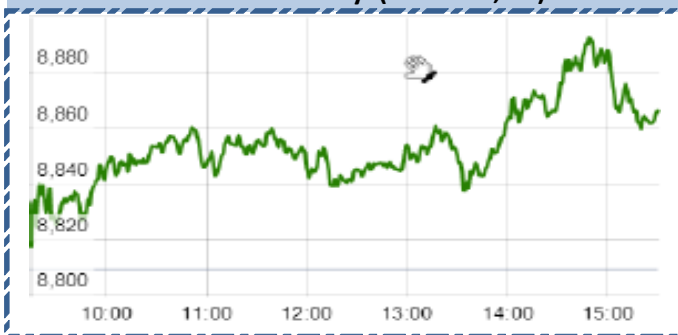


Chart of the Day

Fiscal Trend



Index Action-Nifty (18th Feb, 15)



Index

Contents	Page	Coverage
News	2	UPDATE
Result Q3FY15	3	UPDATE
Economic Calendar	3	UPDATE

MARKET

Name	Value	Change
Sensex	29320.26	184.38
Nifty	8869.1	59.75
DOW	18029.85	(17.73)
NASDAQ	4906.36	7.09
CAC	4799.03	45.04
DAX	10961	65.38
FTSE	6898.08	(0.05)
NIKKIE		Closed
HANG SENG		Closed
EW ALL SHARE	14847.90	93.54

INSTITUTIONAL TURNOVER

FII			
Investor	Buy(Cr.)	Sale(Cr.)	Net(Cr.)
18th Feb	6540.83	4,352.87	2187.96
Feb,15	55640.05	57,046.17	(1406.12)
2015	160791.26	1,51,591.14	9200.12
DII			
Investor	Buy(Cr.)	Sale(Cr.)	Net(Cr.)
18th Feb	2181.18	1,853.31	327.87
Feb,15	23095.89	20,209.73	2886.16
2015	58409.54	63,405.15	(4995.61)

COMMODITY PRICE

COMMODITY/CURRENCIES	Value	
GOLD	26154.00	↓
SILVER	36238.00	↓
CRUDEOIL	51.28	↓
COPPER	359.44	↑
NATURALGAS	174.80	↑
DOLLAR/RS.	62.34	↑
EURO/RS.	70.77	↑
POUND/RS.	95.80	↑

Narnolia Securities Ltd.

Markets Snapshot

Top Price Performers

Top Performers 1D	% Change	Top Performers 1W	% Change	Top Performers 1M	% Change
OISL	20.00	IL&FSENGG	67.39	NTCIND	88.09
BLKASHYAP	19.99	RICOHQ	63.02	ISFT	83.21
IL&FSENGG	19.98	SUZLON	52.71	SHREYAS	66.21
HINDOILEXP	19.97	PETRONENGG	48.90	SPARC	64.79
STEERINTER	19.95	KGL	42.74	IL&FSENGG	57.72

Worst Price Performers

Worst Performers 1D	% Change	Worst Performers 1W	% Change	Worst Performers 1M	% Change
GEMINI	(12.03)	ALMONDZ	(33.80)	PRITHVI	(46.89)
SAMTEL	(9.92)	STRAUSIND	(21.97)	SVCRES	(42.60)
SEZAL	(9.88)	SAMTEL	(21.58)	FARMAXIND	(40.29)
BILENERGY	(8.70)	PRITHVI	(21.47)	STRAUSIND	(39.79)
KINETICENG	(8.43)	SEZAL	(18.58)	CENTRUM	(39.74)

Top News :

- **Sun Pharma Mgt Guideline** : Company is hopeful of meeting the FY15 topline growth guidance of 13-15 percent and are not changing the guidance at the moment. The company has grown faster than the market in India and would be focused on research and development (R&D) spends going forward. The company is eagerly waiting for the Punjab & Haryana High Court (HC) approval for the Ranbaxy merger .

- **Lupin' s US subsidiary Lupin Pharmaceuticals Inc** has launched the all new InspiraChamber Anti-Static Valved Holding Chamber under a strategic licensing agreement with the New Jersey bases respiratory research and development company InspiRX Inc .

- **Berger Paints** has Government of Stavropol Region, Russian Federation entered into a Memorandum of Understanding for conducting a feasibility study and establishment of an industrial coatings plant in the Stavropol region of Russian by Berger.

- **Tata Communications** launches RoamPulse™ platform, a real-time roaming intelligence service that allows mobile network operators to improve their customers roaming experience and make their business more efficient.

- **NTPC** announced big expansion plan for executing green energy projects in the next five years as part of government's plans to provide thrust to clean electricity generation.

- **IL&FS Transportation Networks Ltd** said that the Government of Jharkhand has approved on February 16, 2015, the issuance of Provisional Completion Certificate effective November 30, 2014 for the improvement works on Chaibasa Kandra Chowka Road implemented by Jharkhand Road Project Implementation Company Limited, a subsidiary of the Company under the Jharkhand Accelerated Road Development Programme of the Government of Jharkhand. The length of the road is 68.700 km. The Government of Jharkhand will pay a semi-annual annuity of Rs. 41.13 Crores for a period of 15 years.

- **National Fertilizers Limited (NFL)**, Engineers India Limited (EIL) and Fertilizer Corporation of India Limited (FCIL) have signed a Joint Venture Agreement for setting up new Ammonia and Urea Plants of 2200 MT per day and 3850 MT per day capacity respectively at the existing site of Ramagundam Fertilizer Plant in Distt. Karim Nagar in Telangana

- **CESC** submits closing bid for Sarisatolli coal mine in West Bengal . CESC has informed that following an e-Auction conducted by the Ministry of Coal, Government of India on February 15, 2015 and the results thereof since posted on the Ministry's website, CESC Limited has submitted the closing bid of Rs 470 per MT for Sarisatolli coal mine in the State of West Bengal.

- **U.K. Office for National Statistics** said that the rate of unemployment dipped to 5.7% in the three months to December from 5.8% in the preceding three month-period and better than expectations for a reading of 5.8%.

- **South African Retail Sales** rose to 3.4%, from 2.5% in the preceding month whose figure was revised down from 2.6%. Analysts had expected South African Retail Sales to fall to 2.3% last month.

- **South Africa Head Office** said that South African CPI fell to a seasonally adjusted annual rate of -0.2%, from -0.2% in the preceding quarter. Analysts had expected South African CPI to fall -0.1% in the last quarter

- **U.K. Office for National Statistics** said that the average earnings index, including bonuses, rose by a seasonally adjusted 2.1% in the three months to December, above forecasts for 1.7% and after increasing by 1.8% in the three months to November.

Result Calendar Q3FY15

Bse Coade	Company Name	Date	Bse Coade	Company Name	Date
590031	DENORA	19-Feb-15	500870	CASTROLIND	25-Feb-15
504959	STOVACQ	19-Feb-15	523888	VRWODAR	27-Feb-15
500249	KSBPUMPS	20-Feb-15	500166	GOODRICKE	28-Feb-15
500674	SANOFI	20-Feb-15	511626	RRFIN	14-Dec-15
520113	VESUVIUS	24-Feb-15			

Economic Calendar

	Monday 16-Feb-15	Tuesday 17-Feb-15	Wednesday 18-Feb-15	Thursday 19-Feb-15	Friday 20-Feb-15
US		Empire State Manufacturing Index . Mortgage Delinquencies , NAHB Housing Market Index .	Building Permits , PPI m/m , Core PPI m/m , FOMC Meeting Minutes , Industrial Production m/m .	Unemployment Claims , Philly Fed Manufacturing Index , Crude Oil Inventories ,	Flash Manufacturing PMI
UK/EURO ZONE	Eurogroup Meetings , German Buba Monthly Report , Trade Balance .	CPI y/y , PPI Input m/m , German ZEW Economic Sentiment , ECOFIN Meetings	Average Earnings Index 3m/y , Claimant Count Change , German 10-y Bond Auction , Claimant Count Change , MPC Official Bank Rate Votes .	CBI Industrial Order Expectations , ECB Monetary Policy Meeting Accounts .	French Flash Manufacturing PMI , French Flash Services PMI , German Flash Manufacturing PMI , German Flash Services PMI , Flash Manufacturing PMI
INDIA	WPI				



Narnolia Securities Ltd

124, 1st floor 7/ 1, Lords Sinha Road Kolkata 700071, Ph 033-22821251 Toll Free no : 1-800-345-4000

email: research@narnolia.com,

website : www.narnolia.com

Risk Disclosure & Disclaimer: This report/message is for the personal information of the authorized recipient and does not construe to be any investment, legal or taxation advice to you. Narnolia Securities Ltd. (Hereinafter referred as NSL) is not soliciting any action based upon it. This report/message is not for public distribution and has been furnished to you solely for your information and should not be reproduced or redistributed to any other person in any form. The report/message is based upon publicly available information, findings of our research wing "East wind" & information that we consider reliable, but we do not represent that it is accurate or complete and we do not provide any express or implied warranty of any kind, and also these are subject to change without notice. The recipients of this report should rely on their own investigations, should use their own judgment for taking any investment decisions keeping in mind that past performance is not necessarily a guide to future performance & that the the value of any investment or income are subject to market and other risks. Further it will be safe to assume that NSL and /or its Group or associate Companies, their Directors, affiliates and/or employees may have interests/ positions, financial or otherwise, individually or otherwise in the recommended/mentioned securities/mutual funds/ model funds and other investment products which may be added or disposed including & other mentioned in this report/message.