

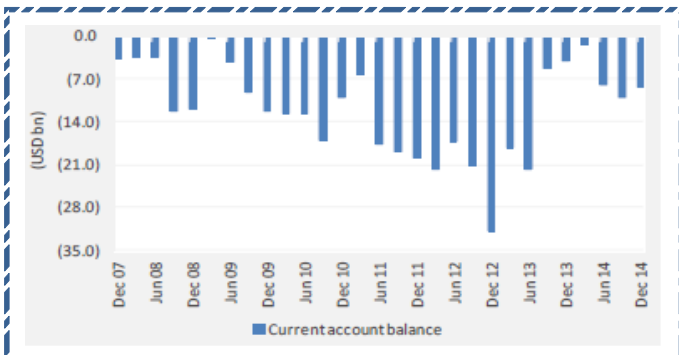
Quote of the Day

"Some people seem to think there's no trouble just because it hasn't happened yet. If you jump out the window at the 42nd floor and you're still doing fine as you pass the 27th floor, that doesn't mean you don't have a serious problem. I would want to address the problem right now." **Charlie Munger**

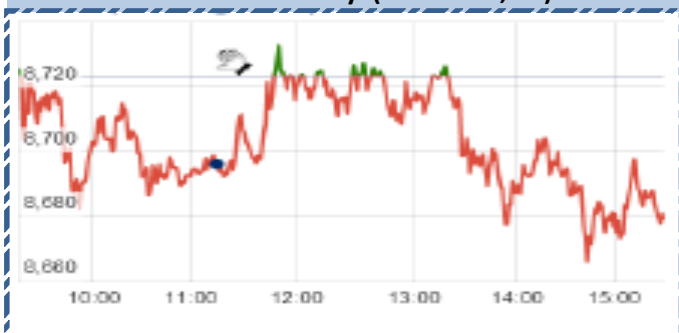
SGX NIFTY : 8769 (76 Pt Up)

Chart of the Day

Current Account Deficit



Index Action-Nifty (18th Mar, 15)



Index

Contents	Page	Coverage
News	2	UPDATE
Economic Calendar	3	UPDATE

MARKET

Name	Value	Change
Sensex	28622.12	(114.26)
Nifty	8685.9	(37.40)
DOW	18076.19	227.11
NASDAQ	4982.83	45.39
CAC	5033.22	4.49
DAX	11922.77	(58.08)
FTSE	6945.2	107.59
NIKKIE	19391.01	(153.47)
HANG SENG	24302.17	182.09
EW ALL SHARE	14728.90	14.72

INSTITUTIONAL TURNOVER

FII			
Investor	Buy(Cr.)	Sale(Cr.)	Net(Cr.)
18th Mar	3985.72	4,443.15	(457.43)
Mar,15	39361.93	35,652.62	3709.31
2015	243137.66	2,22,076.41	21061.25
DII			
Investor	Buy(Cr.)	Sale(Cr.)	Net(Cr.)
18th Mar	1504.07	2,387.06	(882.99)
Mar,15	13332.49	13,716.46	(383.97)
2015	87118.88	93,672.30	(6553.42)

COMMODITY PRICE

COMMODITY/CURRENCIES	Value	
GOLD	25647.00	↑
SILVER	35400.00	↑
CRUDEOIL	46.11	↓
COPPER	358.70	↓
NATURALGAS	184.00	↑
DOLLAR/RS.	62.69	↓
EURO/RS.	67.99	↓
POUND/RS.	93.76	↓

Narnolia Securities Ltd.

Markets Snapshot

Top Price Performers

Top Performers 1D	% Change	Top Performers 1W	% Change	Top Performers 1M	% Change
DIAPOWER	43.87	VIMTALABS	52.95	WESTE	105.49
MUDRA	39.75	MUDRA	48.05	WANBURY	92.32
BILENERGY	30.12	RUSHIL	31.18	SHLAKSHMI	75.85
ABGHEAVY	29.43	ABGHEAVY	30.85	BFINVEST	73.51
VIMTALABS	27.69	DIAPOWER	30.62	ENTEGRA	72.25

Worst Price Performers

Worst Performers 1D	% Change	Worst Performers 1W	% Change	Worst Performers 1M	% Change
GLOBOFFS	(26.90)	GEMINI	(46.00)	SCANPGEOM	(46.42)
GSS	(23.20)	GLOBOFFS	(38.06)	DIAPOWER	(40.14)
ESSDEE	(21.95)	GSS	(27.41)	GEINDSYS	(39.10)
SCANPGEOM	(18.89)	ESSDEE	(25.87)	GEMINI	(35.10)
GEMINI	(17.35)	SCANPGEOM	(25.64)	STRAUSIND	(33.33)

Top News :

- **Greenply Industries Mgt Guideline** : Company will launch a natural veneer, which should help the company earn total revenues of about Rs 35 crore in the next fiscal. The company is also planning an additional 400 dealer appointments in the next two years . Going forward in the next two financial years Company should be touching revenues upto Rs 50-55 crore. Company expect a topline growth in MDF business of 12-15 percent and margins to remain a pretty constant may be a 100 basis points increase in that.

- **Domestic natural gas prices** are likely to be slashed by over 10 percent to USD 5.02 per unit from April 1, hitting revenues of companies like ONGC and Reliance Industries . The new rate will be around USD 5.02 per million British thermal unit (mmBtu) as compared to the current price of USD 5.61

- **Piramal Enterprises Ltd Clarification** : News regarding " "Piramal may buy Apollo's Health Super HiWay." Company write to clarify that as part of its growth strategy, the Company continually looks at strategic initiatives including viable investment opportunities. All of these are channelled towards achieving operational excellence and growth.

- **ICICI Bank** concludes sell of its non-material wholly-owned banking subsidiary in Russia . With reference to the earlier communication dated December 05, 2014 regarding the grant of Board approval for sale of the bank's non-material wholly-owned banking subsidiary in Russia, to Sovcombank, a Russian bank. ICICI Bank Ltd has now informed that the sale has concluded .

- **The central government** has floated a Cabinet note to start the process of selling 10 percent stake in NTPC . The government may offer a 5 percent discount for retail investors on the price it would offer in the stake sale. Discounts for institutional investors may be included too.

- **Wockhardt Ltd** said the US health regulator has not found any issues with respect to data security and control measures at Chikalthana plant in a recent inspection, but suggested continuous voluntary compliance for "desired quality culture"

- **TPG Capital** has Sell its 20% stake in Shriram City Union FinanceBSE 2.20 % on the block. TPG is in talks with several private equity players like KKR, Apax, GAAP, Warburg Pincus, to name a few, sources shared. As per the current market price, the deal could be valued at around Rs 2,500 crores.

- **The Federal Reserve** moved a step closer to hiking rates for the first time since 2006, but downgraded its economic growth and inflation projections, signalling it is in no rush to push borrowing costs to more normal levels.

- **Polish Industrial Output** rose to a seasonally adjusted 4.9%, from 1.7% in the preceding month. Analysts had expected Polish Industrial Output to rise to 4.0% last month.

- **Central Statistical Office** said that Polish PPI rose to a seasonally adjusted -2.7%, from -2.9% in the preceding month. Analysts had expected Polish PPI to rise to -2.7% last month.

- **Canada said wholesale** sales tumbled by a seasonally adjusted 3.1% in January, worse than expectations for a decline of 1.0%. Wholesale sales growth in December was revised up to a 2.8% increase from a previously reported gain of 2.5%.

- **Energy Information Administration said that U.S. Crude Oil Inventories** rose to a seasonally adjusted annual rate of 9.622M, from 4.512M in the preceding month. Analysts had expected U.S. Crude Oil Inventories to rise 3.750M last month.

Economic Calendar

	Monday 16-Mar-15	Tuesday 17-Mar-15	Wednesday 18-Mar-15	Thursday 19-Mar-15	Friday 20-Mar-15
US	Empire State Manufacturing Index , Capacity Utilization Rate , Industrial Production m/m , TIC Long-Term Purchases .	Building Permits , Housing Starts , NAHB Housing Market Index .	FOMC Economic Projections , FOMC Statement , Federal Funds Rate , FOMC Press Conference .	Unemployment Claims ,Current Account , Philly Fed Manufacturing Index , Natural Gas Storage .	Flash Manufacturing PMI , CB Leading Index m/m .
UK/EURO ZONE	German Buba Monthly Report , CB Leading Index m/m .	German WPI m/m , German ZEW Economic Sentiment , Final CPI y/y , ZEW Economic Sentiment , Employment Change q/q , Final Core CPI y/y .	Average Earnings Index 3m/y , Claimant Count Change , MPC Official Bank Rate Votes ,MPC Asset Purchase Facility Votes , Unemployment Rate , Annual Budget Release .	ECB Economic Bulletin , Targeted LTRO , CBI Industrial Order Expectations .	French Flash Manufacturing PMI , French Flash Services PMI , German Flash Manufacturing PMI , German Flash Services PMI , Flash Manufacturing PMI , Public Sector Net Borrowing .
INDIA	WPI Data .				



Narnolia Securities Ltd

124, 1st floor 7/ 1, Lords Sinha Road Kolkata 700071, Ph 033-22821251 Toll Free no : 1-800-345-4000

email: research@narnolia.com,

website : www.narnolia.com

Risk Disclosure & Disclaimer: This report/message is for the personal information of the authorized recipient and does not construe to be any investment, legal or taxation advice to you. Narnolia Securities Ltd. (Hereinafter referred as NSL) is not soliciting any action based upon it. This report/message is not for public distribution and has been furnished to you solely for your information and should not be reproduced or redistributed to any other person in any form. The report/message is based upon publicly available information, findings of our research wing "East wind" & information that we consider reliable, but we do not represent that it is accurate or complete and we do not provide any express or implied warranty of any kind, and also these are subject to change without notice. The recipients of this report should rely on their own investigations, should use their own judgment for taking any investment decisions keeping in mind that past performance is not necessarily a guide to future performance & that the the value of any investment or income are subject to market and other risks. Further it will be safe to assume that NSL and /or its Group or associate Companies, their Directors, affiliates and/or employees may have interests/ positions, financial or otherwise, individually or otherwise in the recommended/mentioned securities/mutual funds/ model funds and other investment products which may be added or disposed including & other mentioned in this report/message.