

SGX NIFTY : 8200 ( 38 Pt Up )

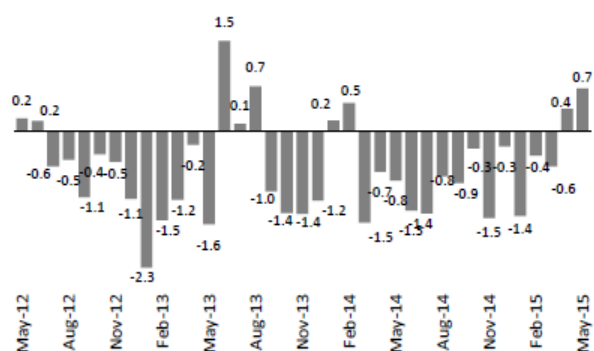
**Quote of the Day**

"Basically, price fluctuations have only one significant meaning for the true investor. They provide him with an opportunity to buy wisely when prices fall sharply and to sell wisely when they advance a great deal. At other times he will do better if he forgets about the stock market and pays attention to his dividend returns and to the operating results of his companies."

Benjamin Graham

**Chart of the Day**

Monthly DII Vs MF Flow



**Index Action Nifty (18th June 15)**



**Index**

Contents	Page	Coverage
News	2	Update
Economic Calendar	4	Update

**Market**

Name	Value	Change
Sensex	27,115.83	283.17
Nifty	8174.60	83.05
DOW	18,115.18	180.10
NASDAQ	5,132.95	68.97
CAC	4,803.48	12.86
DAX	11,100.30	122.29
FTSE	6,707.88	2733.00
NIKKIE	20,151.68	160.68
HANG SENG	26,947.74	253.08
EW ALL SHARE	14032.2	137.51

**Instituional Turnover**

**FII**

Investor	Buy(Cr.)	Sale(Cr.)	Net(Cr.)
18th June,15	4041.26	4825.99	(784.73)
June,15	48802.72	55286.91	(6484.19)
2015	501902.68	475647.69	26254.99

**DII**

Investor	Buy(Cr.)	Sale(Cr.)	Net(Cr.)
18th June,15	2297.54	1187.53	1110.01
June,15	24417.58	15985.01	8432.57
2015	188078.71	173093.14	14985.57

**Commodity Price**

Commodity/Currencies	Value	
GOLD	27161.00	↓
SILVER	36880.00	↑
CRUDEOIL	60.77	↓
COPPER	366.85	↓
NATURALGAS	177.40	↓
DOLLAR/RS.	63.73	↓
EURO/RS.	72.41	↑
POUND/RS.	101.11	↑

## Market Snapshot

### Top Price Performers

Top Performers 1D	% Change	Top Performers 1W	% Change	Top Performers 1M	% Change
CMAHENDRA	20.17	SEINV	70.59	3IINFOTECH	139.91
JAIBALAJI	20.00	WESTE	44.33	INDTODE	115.04
IBPOW	19.20	TIL	39.38	CHENNPETRO	67.18
ORCHIDCHEM	15.40	ALKALI	36.90	REVATHI	53.56
RMCL	14.73	ESSAROIL	34.52	FOURSOFT	53.29

### Worst Price Performers

Worst Performers 1D	% Change	Worst Performers 1W	% Change	Worst Performers 1M	% Change
CMAHENDRA	(39.91)	RAJTV	(42.11)	ROLATAN	(83.46)
XLENERGY	(13.04)	CMAHENDRA	(38.86)	ELPROINTL	(75.21)
AMTEKAUTO	(12.45)	JMDTELEFILM	(29.41)	INDINFO	(65.85)
MEDIAONE	(11.93)	SURANAT&P	(28.03)	STRAUSIND	(54.40)
SHRGLTR	(11.72)	INDINFO	(26.32)	KGNIND	(50.85)

## Top News

• **Eicher Motors Mgt Guideline** : Company launched its first personal utility vehicle Multix, thereby creating a new category in the auto segment.

The car has been created keeping in mind the independent businessmen. Lal says the company will produce about 5000 per month, ie 60,000 per year, in the first phase of production.

• **Ujaas Energy Mgt Guideline** : Company expects its business to improve as Renewable Purchase Obligations are on the rise. The target comprises 40 GW rooftop and 60 GW large-and-medium scale sloar power grid projects.

Ujaas Energy says that rooftop projects target can be achieved by strengthening distribution network over the 200 million Indian households.

• **NTPC** will seek its board's nod on the takeover of Damodar Valley Corporation's Raghunathpur thermal power plant in West Bengal's Purulia district. Mgt said even the cap price for the project had been decided with DVC chairman and the techno-feasibility report of NTPC would be negotiated for a final deal price to bridge the gap.

• **Adani Group** has launched an Indigenous Participation Plan (IPP) that could deliver benefits worth 250 million dollars over the next 30 years to the traditional owners who are opposing the company's 16.5 billion dollar project in Australia's Queensland state.

• **AMTEK AUTO LTD Clarification** : "The Company facing trouble with \$70 million FCCB issue" Amtek Auto Ltd has Clarified to the Company has not issued FCCB of US\$70 Mn. This statement is factually not correct.

• **GAIL** signs MoU with SDMC to provide civic services in Bhikaiji Cama Place Services to be provided as part of 'Swachh Bharat Abhiyaan' .

• **Indiabulls Housing Finance** says the company will continue to focus on opening branches in cities they are already present. Furthermore, Banga is targeting a 20 percent growth in disbursement.

• **Oracle Financial Services Software (OFSS)** said an arbitrator has passed an award amounting to Rs 80.4 crore against one of its subsidiaries.

• **Mangalore Refinery and Petrochemicals** successfully commenced commercial production of polypropylene from its polypropylene (PP) plant.

• **U.S. Natural Gas Storage** rose to a seasonally adjusted annual rate of 89B, from 111B in the preceding month. Analysts had expected U.S. Natural Gas Storage to rise 93B last month

• **Russian Federation State Committee on Statistics said that** Russian retail sales rose to a seasonally adjusted annual rate of -9.2%, from -9.6% in the preceding month whose figure was revised up from -9.8%.

• **Statistics South Africa Head Office** said that South African Retail Sales rose to 3.4%, from 2.5% in the preceding month whose figure was revised up from 2.0% . Analysts had expected South African Retail Sales to fall to 1.8% last month.

• **U.S. Bureau of Economic Analysis** said the country's current account deficit rose to a seasonally adjusted \$113.3 billion in the first quarter from a revised deficit of \$103.1 billion in the fourth quarter. Analysts had expected the U.S. current account deficit to widen to \$117.0 billion in the first quarter.

• **Central Statistical Office said that Polish Industrial** Output rose to a seasonally adjusted 2.8%, from 2.3% in the preceding month. Analysts had expected Polish Industrial Output to rise to 4.1% last month.

Country	Monday 15 June 15	Tuesday 16 June 15	Wednesday 17 June 15	Thursday 18 June 15	Friday 19 June 15
US	Empire State Manufacturing Index , Capacity Utilization Rate ,Industrial Production m/m , NAHB Housing Market Index , TIC Long-Term Purchases .	Building Permits ,Housing Starts .	FOMC Economic Projections , FOMC Statement , Crude Oil Inventories , Federal Funds Rate , FOMC Press Conference .	CPI m/m , Core CPI m/m , Unemployment Claims , Current Account , Philly Fed Manufacturing Index , CB Leading Index m/m .	
UK/EURO ZONE	Trade Balance .	CPI y/y , PPI Input m/m , German ZEW Economic Sentiment , ZEW Economic Sentiment , RPI y/y .	Average Earnings Index 3m/y , Claimant Count Change , MPC Official Bank Rate Votes , BOE Credit Conditions Survey , MPC Asset Purchase Facility Votes .	Retail Sales m/m , Targeted LTRO , Spanish 10-y Bond Auction .	Public Sector Net Borrowing .
INDIA	WPI Data .				

## Narnolia Securities Ltd.

**Narnolia Research Lab**  
Stellar IT Park | 5th Floor | Office Space No. 6 | Tower-II Ind Plot No. C-25 | Sector-62 | Noida | Ph : 0120-4215110

**Central Strategy Desk - Kolkata**  
124 | 1st Floor | 7/1 Lords Sinha Road | Kolkata - 71  
Ph : 033-22821500 | M : 93347 14418, 98302 69810