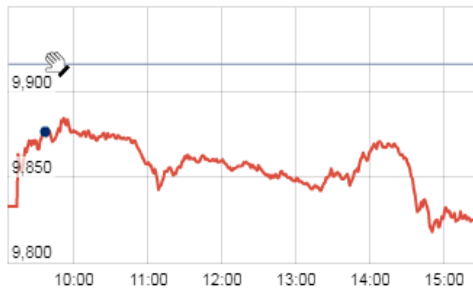


KEY LEVELS

Support 1 : 9830
Support 2 : 9777

Resistance 1: 9850
Resistance 2: 10030

Nifty Intraday Chart



Market Outlook

After giving a gap down opening, Nifty continuously fell to make an intraday low of 9813.80 yesterday and closed the day at 9827.15. It had a net loss of 0.90% over the previous day's close. The broader market was also in favor of bulls as the midcap and small cap indices moved in line with the benchmark index and closed the day after losing over 0.5% each.

On the sectoral front, FMCG index was the main catalyst to drag the market down. It fell by 6.73% as ITC fell 12.50% during the day. The breadth of the market was negative and about two shares declined for every share advanced at NSE

Last week saw Nifty inching closer to golden mark of 10000. Globally too things changed for better post Janet Yellen confirming that Federal Reserve will remain "highly accomodative" to the markets by saying that interest rate would not have to rise much further- 'the federal fund would not have to rise all that much further to get a neutral policy stance'. S&P500 (US) made a new high on Friday.

Last week Nifty also made a gap between 9830 & 9845 and that would be key support area to be watched this week. Only worrying sign is valuation. Though valuation debate appears to have taken a backseat lately and buy on dip has become consensus view among market participants. And here we must remember that a strong bull market needs skepticism to keep flourishing. Once consensus becomes optimistic, we should surely change the side

Market

Market	Value	% Change
Morning Traded Market		
SGX NIFTY	9,863.00	0.05%
NIKKIE	19993	-0.03%
HANG SENG	26,556.11	0.12%
Yesterday Closing Market		
Sensex	31,710.99	-1.13%
Nifty	9,827.15	-0.90%
DOW	21,574.73	-0.25%
NASDAQ	6,344.30	0.47%
CAC	5,173.27	-1.10%
DAX	12,430.00	-1.26%
FTSE	7,390.62	-0.19%
EW ALL SHARE	17,807.57	-0.62%

% Change in 1 day

Commodity Price (Yesterday Closing)

Commodity/Currencies	Value	% Change
GOLD	28563.00	0.47%
SILVER	37695.00	0.76%
CRUDEOIL	48.69	-0.06%
NATURALGAS	198.10	2.11%
DOLLAR/RS.	64.33	-0.03%
EURO/RS.	74.28	0.68%
POUND/RS.	83.71	-0.42%

% Change in 1 day

Institutional Turnover

FII			
Investor	Buy(Cr.)	Sale(Cr.)	Net(Cr.)
18-Jul-17	6676	6359	317
Jul-17	52152	52195	(43)
2017	701407	679096	22311
DII			
Investor	Buy(Cr.)	Sale(Cr.)	Net(Cr.)
18-Jul-17	3017	3992	(975)
Jul-17	34031	32049	1981
2017	403478	381105	22372

Event Today

Today Result

AMTEKAUTO , BAJFINANCE , CANBK

HAVELLS, KPIT, MINDTREE

SANOFI

Concall

Hindustan Media : 9:00 AM

UltraTech : 9:30 AM

HT Media : 10:00 AM,

Mastek : 3:30PM

Havells : 4:00 PM

Sterlite Tech: 5:00 PM

Bajaj Fin : 5:30 PM

Mindtree : 6:30 PM

Dividend

ABMKNO : Rs 1.25/-

ALEMBICLTD : Rs 0.2/-

ASTRAMICRO : Rs 1/-

CHOLAINV : Rs 2/-, EXIDEIND : Rs 0.8/-

GOODRICK : Rs 4.5/-, KIRLPNU : Rs 10/-

LGBBROSLTD : Rs 7/-,MEP : Rs 0.150/-

MANUGRAPH : Rs 0.50/-

MODRNSH : Rs 0.50/-, NOCIL : Rs 1.80/-

NOVARTIND ; Rs 10/-, SAURASHCEM: Rs 1/-

SICAGEN : Rs 0.60/-, TRENT : Rs 1/-

(Exdate : 19.7.2017)

Stock Split

NAVINFLUOR From Rs.10/- to Rs.2/-

(Exdate : 19.7.2017)

Spin Off

GRASIM

(Exdate : 19.7.2017)

Quote of the Day : "We never want to count on the kindness of strangers in order to meet tomorrow's obligations. When forced to choose, I will not trade even a night's sleep for the chance of extra profits."
Warren Buffett

MGL**"BUY"****19th July 2017**

MGL is a sole distributor of CNG and PNG in Mumbai and its adjoining areas with the exclusive gas distribution rights till 2020 in Mumbai. The company has recently started its operations in Raigad district in Maharashtra with two CNG stations. Initially the company has set the target to add 1000 new PNG connections in urban area in Raigad. Further, the Management is focusing to expand its CNG distribution network on Mumbai-Pune expressway. We expect company to clock 6 to 8% volume growth in FY18E and expect 1 Lakh new PNG connections till March 2019 which will make total count to around 10,37,000 PNG connections. In addition the company plans to add 20-25 new CNG filling stations every year which will help it in improving volume every year. Going forward we expect ROE to become 22%, 100 bps improvement with stable margin and consistent future cash flow, we are positive on this stock and recommend BUY with a target price of Rs. 1120

DCBBANK**NEUTRAL****18th July 2017**

With retail focus and aggressive expansion of branch network, DCB Bank is well poised to grow its loan book in the range of 20%-22% in long run. Assets quality has remained healthy; however recent major policies in economy like demonetization, BS4, loan waiver and GST may affect the assets quality in near term. As per the strategy, management is close to its Oct 2015 guideline of branch expansion and afterwards will slow the pace of expansion. However we don't expect C/I to fall significantly as the newly opened branches are still far away to mature. Margins are at the peak level and we don't expect significant traction in it due to intensified competition. Recent capital raised has let the tier 1 to 13.4%. We largely maintain our estimate of FY19 and expect RoE of 11-12% and RoA of 1-1.1%. The stock is currently trading at 2x P/B FY19. Earlier we had recommended BUYING this stock at a price of Rs 177 with the target price of Rs 205 which got achieved recently. We maintain our previous target price which gives us limited upside of 4% at current market price. Hence we recommend to book profit at this level and we are NEUTRAL till further update.

*For details, refer to our daily report- *India Equity Analytics*

Top News**Q1FY18 Concall Highlights of KTKBANK:**

- >>65% of NPA is under substandard account and are secured by collateral security.
- >>Increase in NPA is led by the steel account that has slipped into NPA. Mgt consider it as temporary aberration.
- >>Detail about Steel Sector:-
 - Total exposure-1022cr
 - 15% provision
 - 18 crore substandard
- >>Expects Credit growth of 15% for FY18.
- >>Aims recovery to be higher than the Slippages. Going forward expects slippage to be below 1%.
- >>Guideline about PCR 50-60% during the FY18.
- >>Interest slippage is about 50-54cr.Impact of around 5-10bps in NIM due to this.
- >>Migration to the digital channel has increased by 57% .Mgt expects 60% growth in the FY18 and 80% growth in FY20.This will lead to increase in the staff efficiency and long term gain is expected.
- >>Expects double digit growth in fee income going forward.
- >>Targeting 15% decline in the cost to income ratio.
- >>Optimistic about NIM improvement during the remaining 3 Quarters.
- >>Fresh NPA during the current quarter 378 cr from two account.

Life Insurance Corporation (LIC) has reduced its stake in Tata Global Beverages by 2.14 per cent, selling 1.35 crore shares in the market.

Eicher Motors Mgt Guideline : The benefits of effect rate post GST were passed on to the consumers to the tune of 1.5 to 5 percent on all the models. Prior to GST the effective rates were from 26 to 31 percent. The company also has some benefits on input purchase prices

The industry in the last 9-12 months went through many challenges be it demonetisation, move from BS III to BS IV, then GST. So, the sales are expected to go up from the festive month of September

The CV sales for the company in the month of June dropped 20 percent

Company is also hopeful of positive reforms from the government giving boost to the sector, for eg government's infrastructure investments, scrapping of old trucks. Moreover, monsoon is also good.

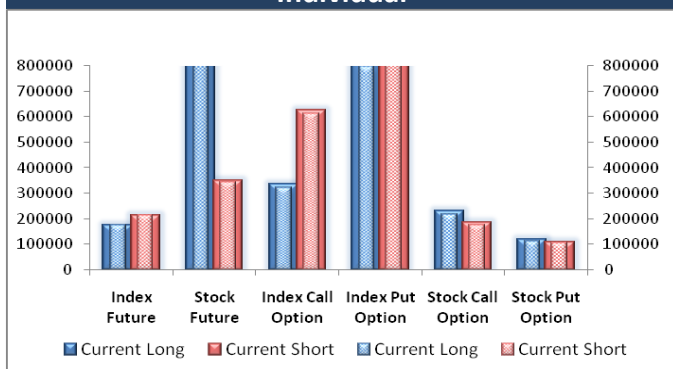
Can Fin Homes said it plans to raise about Rs 6,000 crore by way of debt issuances. The Board of Directors at its meeting on July 21, will consider and approve raising of secured non-convertible debentures to the extent of Rs 6,000 crore on private placement basis

Block Deal

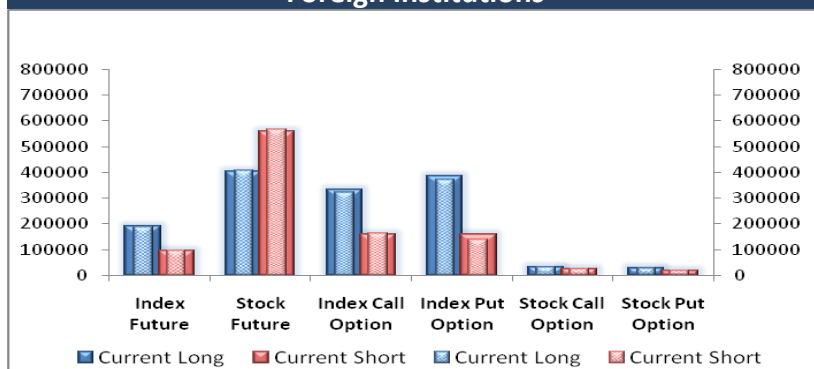
Exchange	Deal Date	Company	Client Name	Deal Type	Quantity	Price
NSE	18-Jul-17	FORTIS	NORGES BANK ON ACCOUNT OF GOVERNMENT PEN	BUY	5732461	149.99
NSE	18-Jul-17	HEXATRADEX	DIVYAM TIE UP LLP .	BUY	280000	34.8
NSE	18-Jul-17	INFIBEAM	PARIKH BHARATBHAI SURESH HUF	BUY	402014	1175.61
NSE	18-Jul-17	JUBLFOOD	GOLDMAN SACHS SINGAPORE PTE	BUY	408206	1322.19
NSE	18-Jul-17	NELCO	ANKITA VISHAL SHAH	BUY	552957	105.31
NSE	18-Jul-17	OMKARCHEM	PATEL MANAV NARESHBHAI	BUY	561	104.92
NSE	18-Jul-17	SINTEX	ADROIT FINANCIAL SERVICES PRIVATE LIMITED	BUY	3857713	33.71
NSE	18-Jul-17	EROSMEDIA	EROS WORLDWIDE FZ LLC	SELL	1186926	216.06
NSE	18-Jul-17	FORTIS	FORTIS HEALTHCARE HOLDINGS PRIVATE LIMITED	SELL	8600000	150.91
NSE	18-Jul-17	FORTIS	FORTIS HEALTHCARE HOLDINGS PRIVATE LIMITED	SELL	4909330	150.02
NSE	18-Jul-17	HEXATRADEX	MAYUR MANGALDAS KOTHARI	SELL	400000	34.63
NSE	18-Jul-17	INFIBEAM	PARIKH BHARATBHAI SURESH HUF	SELL	402014	1172.08
NSE	18-Jul-17	NELCO	ANKITA VISHAL SHAH	SELL	548121	105.08
NSE	18-Jul-17	OMKARCHEM	PATEL MANAV NARESHBHAI	SELL	102900	104.97
NSE	18-Jul-17	SINTEX	ADROIT FINANCIAL SERVICES PRIVATE LIMITED	SELL	4092385	33.71
NSE	18-Jul-17	VETO	VETO ELECTROPOWERS INDIA PRIVATE LIMITED	SELL	160000	225.17

F&O OPEN INTEREST (Number of Contracts)

Individual

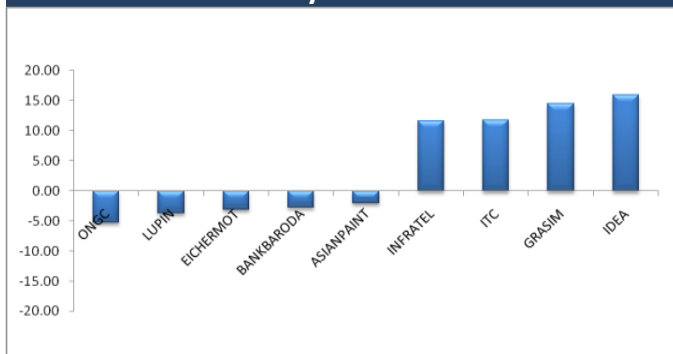


Foreign Institutions

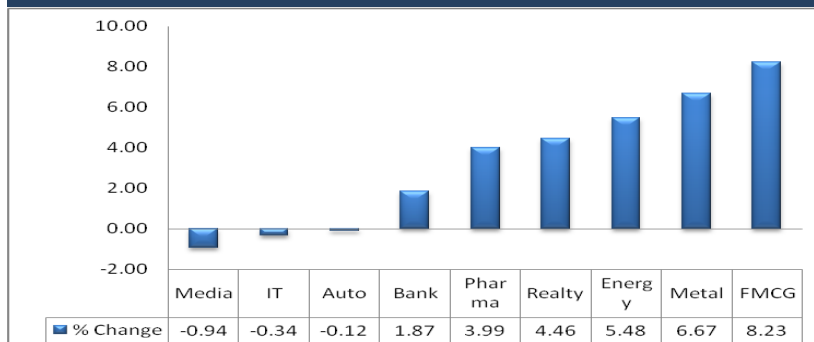


MARKET MOVERS (1 MONTH CHANGE)

Nifty Movers



NSE Sectoral Indices Performance



Result Calendar Q1FY18

Bse Code	Company Name	Date	Bse Code	Company Name	Date
520077	AMTEKAUTO	19-Jul-17	509627	HINDDORROL	21-Jul-17
532978	BAJAJFINSV	19-Jul-17	532814	INDIANB	21-Jul-17
500034	BAJFINANCE	19-Jul-17	506528	KELENRG	21-Jul-17
532483	CANBK	19-Jul-17	517415	LEENEE	21-Jul-17
540124	GNA	19-Jul-17	500262	MAFATLAFIN	21-Jul-17
517354	HAVELLS	19-Jul-17	500109	MRPL	21-Jul-17
505358	INTEGRAEN	19-Jul-17	517536	ONWARDTEC	21-Jul-17
533320	JUBLINDS	19-Jul-17	533179	PERSISTENT	21-Jul-17
532400	KPIT	19-Jul-17	539978	QUESS	21-Jul-17
523704	MASTEK	19-Jul-17	505827	SNL	21-Jul-17
532819	MINDTREE	19-Jul-17	513010	TATASPONGE	21-Jul-17
532440	MPSLTD	19-Jul-17	504966	TINPLATE	21-Jul-17
500674	SANOFI	19-Jul-17	500254	UTTAMVALUE	21-Jul-17
532374	STRTECH	19-Jul-17	532628	3IINFOTECH	22-Jul-17
532782	SUTLEJTEX	19-Jul-17	513729	AROGRANITE	22-Jul-17
500002	ABB	20-Jul-17	532488	DIVISLAB	22-Jul-17
512091	ANSHNCO	20-Jul-17	540376	DMART	22-Jul-17
533573	APLLTD	20-Jul-17	506945	IGLFXPL-B	22-Jul-17
512437	APOLLOFI	20-Jul-17	532636	IIFL	22-Jul-17
532977	BAJAJ-AUTO	20-Jul-17	532209	J&KKBANK	22-Jul-17
500490	BAJAJHLDNG	20-Jul-17	517206	LUMAXIND	22-Jul-17
530843	CUPID	20-Jul-17	531727	MENNPIS	22-Jul-17
533151	DBCORP	20-Jul-17	514414	OXFORDIN	22-Jul-17
500033	FORCEMOT	20-Jul-17	532900	SEINV	22-Jul-17
500188	HINDZINC	20-Jul-17	524546	SHABCHM	22-Jul-17
500165	KANSAINER	20-Jul-17	513709	SHILGRAVQ	22-Jul-17
500247	KOTAKBANK	20-Jul-17	523756	SREINFRA	22-Jul-17
532756	MAHINDCIE	20-Jul-17	500412	TIRUMALCHM	22-Jul-17
523828	MENONBE	20-Jul-17	512175	VAMA	22-Jul-17
532541	NITTECH	20-Jul-17	532401	VIJAYABANK	22-Jul-17
531209	NUCLEUS	20-Jul-17	532432	UNITDSPR	23-Jul-17
500355	RALLIS	20-Jul-17	500425	AMBUJACEM	24-Jul-17
540065	RBLBANK	20-Jul-17	509438	BENARAS	24-Jul-17
500325	RELIANCE	20-Jul-17	532511	EXCELCROP	24-Jul-17
517447	RSSOFTWARE	20-Jul-17	511676	GICHSGFIN	24-Jul-17
511403	SAIJEEV	20-Jul-17	531111	GOTHIPL	24-Jul-17
507685	WIPRO	20-Jul-17	538567	GULFOILLUB	24-Jul-17
504067	ZENSARTECH	20-Jul-17	500180	HDFCBANK	24-Jul-17
500477	ASHOKLEY	21-Jul-17	540530	HUDCO	24-Jul-17
500027	ATUL	21-Jul-17	534816	INFRATEL	24-Jul-17
530885	AURUMSOFT	21-Jul-17	523405	JMFINANCIL	24-Jul-17
511196	CANFINHOME	21-Jul-17	532925	KAUSHALYA	24-Jul-17
501833	CHOWGULSTM	21-Jul-17	540005	LTI	24-Jul-17
511072	DHFL	21-Jul-17	532720	M&MFIN	24-Jul-17
500089	DICIND	21-Jul-17	532777	NAUKRI	24-Jul-17
531471	DUKEOFS	21-Jul-17	539332	NAVKARCORP	24-Jul-17

504112	NELCO	24-Jul-17	513434	TATAMETALI	25-Jul-17
531120	PATELENG	24-Jul-17	500215	ATFL	26-Jul-17
530381	PETRONENGG	24-Jul-17	533228	BHARATFIN	26-Jul-17
539354	POLYSPIN	24-Jul-17	532974	BIRLAMONEY	26-Jul-17
519230	RICHIRICH	24-Jul-17	508906	EVERESTIND	26-Jul-17
523351	STDSHOE	24-Jul-17	500469	FEDERALBNK	26-Jul-17
500407	SWARAJENG	24-Jul-17	506076	GRINDWELL	26-Jul-17
500483	TATACOMM	24-Jul-17	500010	HDFC	26-Jul-17
505400	TEXINFRA	24-Jul-17	507438	IFBAGRO	26-Jul-17
533326	TEXRAIL	24-Jul-17	500214	IONEXCHANG	26-Jul-17
524129	VINYLINDIA	24-Jul-17	533519	L&TFH	26-Jul-17
524661	WELCURE	24-Jul-17	531319	MARUTISE	26-Jul-17
505412	WENDT	24-Jul-17	526299	MPHASIS	26-Jul-17
505537	ZEEL	24-Jul-17	511766	MUTHTFN	26-Jul-17
533287	ZEELEARN	24-Jul-17	500790	NESTLEIND	26-Jul-17
500820	ASIANPAINT	25-Jul-17	522034	SHANTIGEAR	26-Jul-17
532215	AXISBANK	25-Jul-17	503811	SIYSIL	26-Jul-17
532454	BHARTIARTL	25-Jul-17	500405	SUPPETRO	26-Jul-17
524663	BIBCL	25-Jul-17	533158	THANGAMAYL	26-Jul-17
512313	BIJLTEX	25-Jul-17	532648	YESBANK	26-Jul-17
533167	COROENGG	25-Jul-17	535755	ABFRL	27-Jul-17
500123	ELANTAS	25-Jul-17	505036	ACGL	27-Jul-17
511716	ESCORTSFIN	25-Jul-17	530999	BALAMINES	27-Jul-17
505790	FAGBEARING	25-Jul-17	526849	BANARBEADS	27-Jul-17
538961	GENUSPAPER	25-Jul-17	531340	BERVINL	27-Jul-17
500660	GLAXO	25-Jul-17	532523	BIOCON	27-Jul-17
513507	GUJCONT	25-Jul-17	532485	BLIL	27-Jul-17
500182	HEROMOTOCO	25-Jul-17	511243	CHOLAFIN	27-Jul-17
500500	HINDMOTORS	25-Jul-17	500147	CMIFPE	27-Jul-17
530055	HRMNYCP	25-Jul-17	539876	CROMPTON	27-Jul-17
540133	ICICIPRULI	25-Jul-17	500124	DRREDDY	27-Jul-17
540565	INDIGRID	25-Jul-17	509525	EMPIND	27-Jul-17
502330	IPAPPM	25-Jul-17	500086	EXIDEIND	27-Jul-17
532468	KAMAHOLD	25-Jul-17	500150	FOSECOIND	27-Jul-17
500243	KIRLOSIND	25-Jul-17	532296	GLENMARK	27-Jul-17
532889	KPRMILL	25-Jul-17	532281	HCLTECH	27-Jul-17
500249	KSBPUMPS	25-Jul-17	532174	ICICIBANK	27-Jul-17
511728	KZLFIN	25-Jul-17	532659	IDFC	27-Jul-17
540115	LTTS	25-Jul-17	539437	IDFCBANK	27-Jul-17
532313	MAHLIFE	25-Jul-17	505726	IFBIND	27-Jul-17
523144	MEDICAPQ	25-Jul-17	523638	IPRINGLTD	27-Jul-17
532504	NAVINFUOR	25-Jul-17	500875	ITC	27-Jul-17
531819	NUWAY	25-Jul-17	500241	KIRLOSIBROS	27-Jul-17
500314	ORIENTHOT	25-Jul-17	532500	MARUTI	27-Jul-17
500331	PIDILITIND	25-Jul-17	500730	NOCIL	27-Jul-17
500330	RAYMOND	25-Jul-17	532944	ONMOBILE	27-Jul-17
512309	ROSETEX	25-Jul-17	526490	PRATIK	27-Jul-17
531219	SHYAMAINFO	25-Jul-17	505807	ROLCOEN	27-Jul-17
513517	STEELCAS	25-Jul-17	502090	SAGCEM	27-Jul-17

521206	SAMTEX	27-Jul-17	500367	RUBFILA	28-Jul-17
512589	SITAENT	27-Jul-17	507984	SERIND	28-Jul-17
524542	SUKHJITS	27-Jul-17	532638	SHOPERSTOP	28-Jul-17
537259	SUYOG	27-Jul-17	500472	SKFINDIA	28-Jul-17
531003	SWRNASE	27-Jul-17	521178	SRMCL	28-Jul-17
539268	SYNGENE	27-Jul-17	530953	SUNILAGR	28-Jul-17
532301	TATACOFFEE	27-Jul-17	501110	SUNRINV	28-Jul-17
500408	TATAELXSI	27-Jul-17	519604	SURFI	28-Jul-17
540595	TEJASNET	27-Jul-17	532790	TANLA	28-Jul-17
505854	TRF	27-Jul-17	511096	TVOLCON	28-Jul-17
530401	VINYOFL	27-Jul-17	538873	WINYCOMM	28-Jul-17
533023	WABCOINDIA	27-Jul-17	509046	ZLEENCON	28-Jul-17
533227	AHLEAST	28-Jul-17	534742	ZUARI	28-Jul-17
505216	ALFREDHE	28-Jul-17	531175	BLSINFOTE	29-Jul-17
520119	ASAL	28-Jul-17	532885	CENTRALBK	29-Jul-17
532493	ASTRAMICRO	28-Jul-17	531210	COLINZ	29-Jul-17
531310	AVAILFC	28-Jul-17	507833	COMPUPN	29-Jul-17
500280	CENTENKA	28-Jul-17	500171	GHCL*	29-Jul-17
506395	COROMANDEL	28-Jul-17	502150	KLYNCEM	29-Jul-17
522074	ELGIEQUIP	28-Jul-17	531221	MAYURFL	29-Jul-17
526574	ENTRINT	28-Jul-17	516062	NATPLY	29-Jul-17
523754	EPCIN	28-Jul-17	500452	NEPCAGRO	29-Jul-17
500495	ESCORTS	28-Jul-17	500301	NEPCMICON	29-Jul-17
531600	GOGIACAP	28-Jul-17	531077	NEPCPAPER	29-Jul-17
517372	GUJINTRX	28-Jul-17	521192	NEPCTEX	29-Jul-17
530005	INDIACEM	28-Jul-17	521009	NIWASSP	29-Jul-17
532150	INDRAMEDCO	28-Jul-17	515043	SAINTGOBAIN	29-Jul-17
532732	KKCL	28-Jul-17	511640	SANGHCO	29-Jul-17
500510	LT	28-Jul-17	502450	SESHAPAPER	29-Jul-17
523248	MACPLASQ	28-Jul-17	522152	SOLIMAC	29-Jul-17
530243	MANGASOF	28-Jul-17	516038	SOMAPPR	29-Jul-17
509760	MODRNSH	28-Jul-17	523826	SOVERDIA	29-Jul-17
532529	NDTV	28-Jul-17	538876	STSERV	29-Jul-17
516082	NRAGRINDQ	28-Jul-17	531279	TRISHAKT	29-Jul-17
511702	PARSHINV	28-Jul-17	522108	YUKEN	29-Jul-17
512099	PUNITCO	28-Jul-17	537292	AGRITECH	31-Jul-17

Result Q1FY18

Bse Code	NSE code	Sales	sales Growth	PAT	PAT Growth
522134	ARTSONENGG	30.04	45.40	0.49	(474.38)
509675	HIL	431.90	12.15	36.87	17.12
500696	HINDUNILVR	9094.00	13.85	1281.00	9.12
532662	HTMEDIA	652.18	7.04	41.01	83.00
530019	JUBILANT	1596.08	13.93	183.18	(7.48)
500266	MAHSCOOTER	2.89	228.41	1.06	(22.06)
532798	NETWORK18	336.90	(4.04)	(66.23)	(133.45)
532800	TV18BRDCST	226.72	7.61	(18.70)	(109.44)
532538	ULTRACEMCO	8094.00	23.80	873.00	340.91

Earning Estimate Q1FY18

DATE	NSE code	Sales	sales Growth	PAT	PAT Growth
18-Jul-17	ULTRACEMCO	6755.00	9.30	814.00	5.00
18-Jul-17	HTMEDIA	634.40	3.20	24.40	8.70
19-Jul-17	HAVELLS	1852.80	26.30	169.50	16.90
19-Jul-17	SANOFI	671.80	10.50	88.00	3.20
19-Jul-17	KPIT	845.60	5.30	52.90	(3.90)
19-Jul-17	MINDTREE	1313.30	(1.10)	124.40	0.70
19-Jul-17	CANBK	2575.90	11.60	585.90	155.90
19-Jul-17	BAJAJFINSV	1908.40	36.00	580.10	36.80
20-Jul-17	BAJAJ-AUTO	5233.50	(8.90)	883.20	(9.70)
20-Jul-17	ABB	2383.30	13.40	105.60	36.40
20-Jul-17	APLLTD	763.60	5.00	92.50	(9.30)
20-Jul-17	DBCORP	594.20	4.20	112.00	7.70
20-Jul-17	HINDZINC	4419.50	74.60	1707.90	64.60
20-Jul-17	RELIANCE	57494.40	7.50	8292.40	9.90
20-Jul-17	NIITTECH	686.20	2.50	58.70	87.60
20-Jul-17	WIPRO	13406.20	(1.40)	1856.60	(9.50)
20-Jul-17	ZENSARTECH	761.00	(0.20)	55.80	(26.80)
20-Jul-17	KOTAKBANK	2224.10	15.90	919.00	23.90
20-Jul-17	RBLBANK	374.80	53.20	142.00	45.90
21-Jul-17	ASHOKLEY	4275.50	0.40	206.60	(29.00)
21-Jul-17	MRPL	10612.60	25.90	332.50	(53.70)
21-Jul-17	PERSISTENT	726.90	3.60	75.80	3.50
21-Jul-17	INDIANB	1342.10	8.60	379.20	23.40
21-Jul-17	DHFL	552.10	20.90	249.80	24.00
22-Jul-17	DIVISLAB	974.80	(3.10)	234.30	(22.40)

Economic Calendar

Country	Monday 17th July 17	Tuesday 18th July 17	Wednesday 19th July 17	Thursday 20th July 17	Friday 21th July 17
US	Empire State Manufacturing Index.	Building Permits, Housing Starts , Crude Oil Inventories	Building Permits, Housing Starts , Crude Oil Inventories	Unemployment Claims , Philly Fed Manufacturing Index, CB Leading Index m/m, Natural Gas Storage.	Flash Manufacturing PMI , Flash Services PMI.
UK/EURO ZONE	German WPI m/m , German Buba Monthly Report	CPI y/y, PPI Input m/m, RPI y/y, Final CPI y/y, German ZEW Economic Sentiment, Final Core CPI y/y, ZEW Economic Sentiment.	Manufacturing Sales m/m	German PPI m/m, Current Account, Retail Sales m/m, CBI Industrial Order Expectations, Minimum Bid Rate, ECB Press Conference, Consumer Confidence.	French Flash Manufacturing PMI, French Flash Services PMI, German Flash Manufacturing PMI, German Flash Services PMI, Flash Manufacturing PMI, Flash Services PMI, Public Sector Net Borrowing, Italian Retail Sales m/m.
INDIA					

Narnolia

Advance Strategy - Simple Solutions

Narnolia Securities Ltd

201 | 2nd Floor | Marble Arch Building | 236B-AJC Bose
Road | Kolkata-700 020 , Ph : 033-40501500

email: narnolia@narnolia.com,

website : www.narnolia.com

Risk Disclosure & Disclaimer: This report/message is for the personal information of the authorized recipient and does not construe to be any investment, legal or taxation advice to you. Narnolia Securities Ltd. (Hereinafter referred as NSL) is not soliciting any action based upon it. This report/message is not for public distribution and has been furnished to you solely for your information and should not be reproduced or redistributed to any other person in any form. The report/message is based upon publicly available information, findings of our research wing "East wind" & information that we consider reliable, but we do not represent that it is accurate or complete and we do not provide any express or implied warranty of any kind, and also these are subject to change without notice. The recipients of this report should rely on their own investigations, should use their own judgment for taking any investment decisions keeping in mind that past performance is not necessarily a guide to future performance & that the the value of any investment or income are subject to market and other risks. Further it will be safe to assume that NSL and /or its Group or associate Companies, their Directors, affiliates and/or employees may have interests/ positions, financial or otherwise, individually or otherwise in the recommended/mentioned securities/mutual funds/ model funds and other investment products which may be added or disposed including & other mentioned in this report/message.