

SGX NIFTY : 8458 ( 16 Pt Down )

**Quote of the Day**

"We've long felt that the only value of stock forecasters is to make fortune tellers look good. Even now, Charlie and I continue to believe that short-term market forecasts are poison and should be kept locked up in a safe place, away from children and also from grown-ups who behave in the market like children."

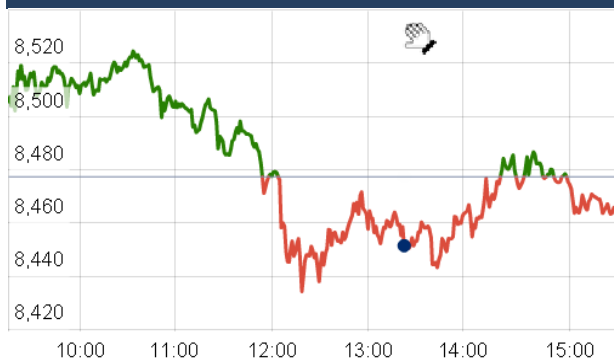
Warren Buffett

**Chart of the Day**

**Fiscal Deficit**



**Index Action Nifty ( 18th Aug 15 )**



**Index**

Contents	Page	Coverage
News	2	Update
Economic Calendar	3	Update

**Market**

Name	Value	Change
Sensex	27,831.54	(46.73)
Nifty	8466.55	(10.75)
DOW	17,511.34	(33.84)
NASDAQ	5,059.35	(32.35)
CAC	4,971.25	(13.58)
DAX	10,915.82	(24.41)
FTSE	6,526.29	(24.01)
NIKKEI	20,448.50	(105.97)
HANG SENG	23,435.68	(39.29)
EW ALL SHARE	14727.71	22.09

**Institutional Turnover**

**FII**

Investor	Buy(Cr.)	Sale(Cr.)	Net(Cr.)
18th Aug,15	3436.01	3691.43	(255.42)
Aug,15	10418.99	9949.88	469.11
2015	731910.54	709290.22	22620.32

**DII**

Investor	Buy(Cr.)	Sale(Cr.)	Net(Cr.)
18th Aug,15	1194.33	1066.83	127.50
Aug,15	2526.75	2693.65	(145.91)
2015	280441.13	254884.50	25556.63

**Commodity Price**

Commodity/Currencies	Value	
GOLD	26005.00	↓
SILVER	34807.00	↓
CRUDEOIL	42.98	↓
COPPER	331.00	↓
NATURALGAS	177.30	↓
DOLLAR/RS.	65.32	↑
EURO/RS.	72.30	↓
POUND/RS.	102.58	↓

## Market Snapshot

### Top Price Performers

Top Performers 1D	% Change	Top Performers 1W	% Change	Top Performers 1M	% Change
GOLDIAM	19.97	SHRENUJ	46.05	GMBREW	125.69
TNPETRO	19.95	JUBLINDS	35.55	GREENFIRE	120.81
TATAELXSI	19.71	GRAVISSHO	26.92	RUSHIL	105.88
IMPEXFERRO	19.47	KGNIND	26.55	HIMATSEIDE	78.52
MASTEK	18.72	GOLDIAM	25.70	SANCIA	75.00

### Worst Price Performers

Worst Performers 1D	% Change	Worst Performers 1W	% Change	Worst Performers 1M	% Change
JYOTISTRUC	(9.72)	JYOTISTRUC	(44.08)	AMTEKINDIA	(62.15)
TRF	(9.62)	RESTILE	(30.89)	JYOTISTRUC	(46.17)
TRICOM	(9.44)	PRAKASHCON	(30.10)	AHMEDFORGE	(36.04)
COMMEXTECH	(9.32)	AHMEDFORGE	(27.45)	FARMAXIND	(36.00)
GLOBALCA	(9.31)	KSCL	(27.24)	TRF	(35.00)

## Top News

- Royal Enfield** has opened its first operating direct distribution subsidiary (outside India) in North America. The subsidiary will directly sell to dealers and even to customers as well as conduct all market development and support activities such as marketing, services, aftersales etc for the Royal Enfield brand in North America . Its current product line-up in North America includes Bullet 500cc, Classic 500cc and Continental GT 535cc cafe racer ranging from \$4995 to \$5995.
- Emami Mgt Guideline** : Sales growth was seen from across all segments be it healthcare, consumer care, international business, new launches etc. The company is upbeat on the new launches and have already invested Rs 30 crore on them in first quarter and going forward too would appropriately do ad spends after evaluation of demand of new products. When asked about acquisition plans, the company is always on lookout for opportunities both within india and abroad.
- KNR Constructions** bagged new orders worth Rs 2,600 crore in April and May. Total order book stands at Rs 3,600 crore, Reddy said adding that the orders have to be executed within two years. Advances from the orders will be used as working capital for the company . The company executed National Highway Authority of India (NHAI) projects worth Rs 700-800 crore. The company has bid for more NHAI projects in states like Uttarakhand, Punjab and Maharashtra
- Essel Propack Mgt Guideline** : Company is confident of EBITDA margins sustaining at current levels of 18 percent or could even track 20 percent . On the revenue front, going forward he is hopeful of them being in the range of over Rs 500 crore because despite Q1 being a seasonally weak quarter the company managed to clock revenues of around Rs 500 crore.
- Bosch Ltd** said that it has commissioned a 12 MW solar power project for Cochin International Airport, which was inaugurated by Kerala Chief Minister Oommen Chandy. The project is the single largest solar project which has been constructed in an airport in India. It is spread over 50 acres. The project executed by Bosch Energy and Building Solutions (BEBS) team in India is estimated to generate approximately 50,000 units of electricity daily.
- Rajesh Exports** has bagged an export order worth Rs 1,170 crore from an UAE-based company for gold and diamond-studded jewellery and medallions from M/s Al Malek Jewellery, UAE . It has gold jewellery manufacturing facility at Bangalore, spread over 12 acres of land, with a capacity to process 250 tonnes of gold into jewellery.
- Sharon Bio-Medicine** said the US health regulator has inspected one of its formulation plants in Dehradun . The formulation plants at Dehradun in Uttarakhand has been inspected and audited by US Food and Drug Administration (USFDA) officials . USFDA had inspected company's manufacturing facility at Taloja near Navi Mumbai last month
- Chilean GDP** fell to a seasonally adjusted 1.9%, from 2.4% in the preceding month. Analysts had expected Chilean GDP to fall to 1.7% last month.
- U.K. PPI input** fell to a seasonally adjusted -0.9%, from -1.8% in the preceding month whose figure was revised down from -1.3%. Analysts had expected U.K. PPI input to fall -1.9% last month.
- U.K. Retail Price Inflation** remained unchanged at a seasonally adjusted 1.0%, from 1.0% in the preceding quarter. Analysts had expected U.K. Retail Price Inflation to remain unchanged at 1.0% in the last quarter.
- U.S. TIC long term purchases** rose to a seasonally adjusted 103.1B, from 93.0B in the preceding month. Analysts had expected U.S. TIC long term purchases to rise 23.0B last month.
- U.S. core PPI** rose to a seasonally adjusted 0.3%, from 0.3% in the preceding month. Analysts had expected U.S. core PPI to rise 0.1% last month.
- Euro zone CPI remained** unchanged at a seasonally adjusted annual rate of 0.2%, from 0.2% in the preceding month. Analysts had expected Euro zone CPI to remain unchanged at 0.2% last month.

### Result Calendar Q1FY16

BSE Code	Company Name	Date	BSE Code	Company Name	Date
532729	UTTAMSUGAR	19-Aug-15	523519	UNIOFFICE	27-Aug-15
505890	KENNAMET	21-Aug-15	517467	MARSONS	29-Aug-15
517044	IDM	26-Aug-15	524038	VENLONENT	31-Oct-15
521234	SRINACHA	27-Aug-15	511626	RRFIN	14-Dec-15

### Result Q1FY16

NSE Code	BSE Code	Sales Q1FY16(e)	Sales YOY(%)	Sales Q1FY16(e)	PAT YOY(%)
GREENPOWER	533263	108.27	(26.50)	(53.38)	(104.40)
OSWALAGRO	500317	5.09	115.70	4.14	167.10
PBAINFRA	532676	30.52	(56.80)	0.58	169.05
PCJEWELLER	534809	1510.65	14.20	82.47	18.51
PARGSHL	505502	42.38	158.60	0.50	100.00
PVP	517556	8.31	(16.10)	0.09	(84.21)
PAGEIND	532827	446.52	16.40	63.18	16.35
PANACEABIO	531349	124.84	(17.10)	(36.90)	(56.75)
PANORAMUNI	531816	37.85	16.20	(1.28)	36.60
PARABDRUGS	533211	22.06	(80.00)	(76.84)	(226.70)
PARACABLES	530555	77.69	(25.50)	(30.25)	(225.62)
PATELENG	531120	702.96	34.40	4.76	570.42
PAUSHAKLTD	532742	21.98	58.60	4.28	159.39
PAWANSUT	535658	0.43	19.40	0.06	(40.00)
PENIND	513228	273.85	(5.70)	6.60	18.90
PHOENIXLTD	503100	396.03	13.00	25.59	1.10
PICTUREHS	532355	1.50	(89.30)	(2.07)	31.68
PIPAVAVDOC	533107	106.96	(66.20)	(167.27)	(2159.98)
POLTC	514486	11.29	(21.60)	(20.54)	(12.24)
PFC	532810	6755.29	15.40	1576.21	8.83
PRADIP	533178	52.25	(64.70)	(41.35)	(32.45)
PRAKASHCON	533605	14.44	(7.50)	0.39	(26.42)
PRATIBHA	532718	879.72	26.20	9.24	(16.20)
PSMSPGMILL	503873	9.27	3.10	(2.07)	45.24
PROVOGE	532647	126.16	7.30	(11.09)	43.19
PUNJLLOYD	532693	657.35	(41.00)	(597.84)	(64.28)
PURVA	532891	449.32	(2.70)	23.23	(60.10)
QUADRANT	511116	134.45	14.20	(41.13)	33.05
RPPINFRA	533284	85.65	81.80	4.48	50.30
RAIREKMOH	530047	87.33	82.90	0.81	350.00
RAIN	500339	2623.65	(16.80)	145.13	17.50
RAINBOWPAP	523523	215.74	(25.20)	(65.35)	(412.40)
RAJVIR	532665	41.66	50.50	(2.06)	0.48
RAMKY	533262	265.60	20.70	(63.14)	27.75
RANASUG	507490	121.98	57.20	(18.68)	(74.91)
RATHIST	504903	165.38	62.50	(34.68)	(116.61)
IBPOW	533122	300.06	106.20	(263.18)	(86.90)
RELCAPITAL	500111	2450.00	14.60	201.00	22.60
RESPONIND	505509	607.90	18.60	4.96	(74.00)
RICOAUTO	520008	251.37	(29.60)	4.28	434.40

RICOHQ	517496	442.86	95.50	0.41	
RPIL	526407	2.29	37.10	0.43	43.33
RODIUM	531822	1.59	(27.70)	0.27	(70.97)
ROHITFERRO	532731	532.80	22.80	(60.78)	37.05
ROLTA	500366	983.40	11.60	40.72	(34.10)
RUBYMILLS	503169	52.55	2.30	5.64	(78.57)
SALSTEEL	532604	100.00	4.20	(14.35)	(165.74)
SBECSUG	532102	106.07	(24.60)	(8.05)	(259.40)
SEINV	532900	47.59	3.60	13.45	10.80
SELMCL	532886	649.96	(9.00)	59.41	259.60
SRSFIN	536799	6.49	(39.50)	1.91	(13.57)
SRSREAL	533305	268.89	53.20	1.66	23.88
STINDIA	513151	15.56	4.80	1.03	230.38
SAHARAHOUS	511533	3.50	(26.60)	0.46	(24.59)
SALORAINTL	500370	67.20	(34.10)	0.07	(36.36)
SANCIA	532836	0.81	(3.60)	(0.34)	83.25
SANKHYAIN	532972	36.08	(9.10)	2.16	77.05
SANWARIA	519260	513.79	5.00	9.23	49.84
SAREGAMA	532163	51.97	22.80	2.63	(21.73)
SATHAISPAT	526093	232.22	2.40	(14.73)	(289.82)
SATRAPROP	508996	16.20	358.90	(1.48)	79.39
SAYAJIHOTL	523710	38.08	21.00	0.39	39.29
SELAN	530075	19.06	(24.60)	6.38	(38.89)
SETCO	505075	103.65	8.60	4.25	(5.56)
SEZAL	532993	4.36	(5.40)	(2.47)	(104.13)
SHAHALLOYS	513436	86.14	12.00	(11.58)	57.49
SHREDIGCEM	502180	94.13	(19.30)	1.09	(89.98)
SGJHL	533180	0.58	(97.80)	(35.75)	30.49
RENUKA	532670	1550.50	33.90	(227.20)	(181.89)
SHRSHATEX	505513	2.45	444.40	0.09	(47.06)
SHREYASI	526335	0.37	(63.70)	(2.47)	28.41
SHREYAS	520151	135.57	11.10	16.38	182.40
SHRIDINESH	503804	16.19	(6.30)	(1.94)	(31.97)
SHYAMTEL	517411	70.45	(17.50)	(1.95)	(109.68)
SIMBHSUGAR	507446	224.29	2.30	(72.00)	(108.20)
SIMPLEX	532877	85.10	(48.10)	(13.78)	(125.20)
SITASHREE	532961	105.30	(8.10)	0.97	16.87
SITICABLE	532795	228.09	9.10	(37.11)	(17.20)
SMARTLINK	532419	14.15	(47.90)	0.49	(90.04)
SOMATEX	521034	45.08	(36.70)	(5.25)	65.48
SONASTEER	520057	374.67	4.90	4.15	15.90
SPECIALITY	534425	80.14	14.00	2.27	18.85
SPENTEX	521082	192.73	(27.50)	(20.50)	(87.73)
SRHHYPOLTD	532842	89.59	(5.50)	2.17	(73.04)
SABTN	530943	25.94	30.90	2.06	(21.67)
SIL	530017	1.69	(6.60)	(2.10)	(94.44)
STCINDIA	512531	2103.40	(39.90)	(1.13)	(102.55)
SAIL	500113	9502.80	(16.20)	(321.64)	(160.70)
STEELXIND	534748	317.67	7.00	8.65	(4.42)
STEELCOGUJ	500399	118.80	(2.00)	(5.79)	7.36

STERLINBIO	512299	118.08	(36.40)	(88.48)	19.76
STOVACQ	504959	38.13	68.90	5.46	50.41
SUDAR	533332	46.71	(81.60)	(11.36)	(199.30)
SUDARSCHEM	506655	294.23	10.10	18.21	57.25
SMPL	513414	872.74	2.60	0.98	(85.20)
SUJANATWR	532887	333.63	(22.20)	(11.91)	(1256.31)
SUJANAUNI	517224	737.63	(9.30)	1.05	90.91
SUMMEETINDS	514211	273.91	(7.30)	4.77	(23.20)
SUNDRMFAST	500403	631.94	9.20	42.29	10.94
SUNASIAN	506615	29.01	(24.20)	0.20	(23.08)
SUNTECK	512179	23.59	27.70	0.82	(2.40)
SUPRHOUSE	523283	149.05	(15.10)	5.56	(35.57)
SURYAROSNI	500336	731.23	8.80	11.79	5.27
SURYACHAKRA	532874	27.71	(29.90)	(21.62)	(4700.00)
SUVEN	530239	100.98	(28.70)	20.23	(41.77)
SWANENERGY	503310	72.09	14.00	0.07	(95.91)
SWARNSAR	526365	58.78	42.50	0.58	48.70
SYMPHONY	517385	133.42	(13.10)	22.28	(31.93)
SYNCOM	524470	40.04	17.50	2.25	36.36
NAOLINEN	537392	64.92	(2.40)	0.15	(76.20)
TANEJAERO	522229	9.44	34.90	(0.81)	3.57
TANTIACONS	532738	90.17	(30.50)	(0.11)	99.55
TARAJEWELS	534756	309.94	(3.20)	7.22	2.80
TATAPOWER	500400	9234.58	6.10	241.33	316.80
TECHNOFAB	533216	92.63	2.10	1.18	1.72
THIRUSUGAR	507450	44.92	(11.30)	(26.32)	(294.01)
TIDEWATER	590005	252.78	3.30	25.67	45.36
TI	507205	116.29	(45.70)	(44.96)	(245.50)
TIMETECHNO	532856	607.73	6.70	28.42	37.80
TIPSINDLTD	532375	8.86	8.60	(0.62)	(675.00)
TWL	532966	57.94	(18.00)	2.56	19.07
TRIVENI	532356	504.68	(12.40)	(90.21)	(1431.60)
TRITURBINE	533655	123.74	1.80	14.36	0.98
TUNITEX	531411	6.89	53.10	0.01	(50.00)
UGARSUGAR	530363	116.96	(58.20)	(92.62)	(12587.67)
UJAAS	533644	11.78	(52.80)	1.43	(3.38)
UNISH	531831	79.37	(44.20)	0.14	(75.00)
UNITECH	507878	417.55	(72.60)	(281.29)	(5159.20)
UNITY	532746	62.20	(76.30)	(95.40)	(94.69)
USHERAGRO	532765	456.48	17.10	20.24	(16.67)
UTTAMVALUE	500254	1055.50	(29.30)	(43.30)	(940.87)
VMS	533427	7.31	(76.70)	0.14	(36.36)
VSTIND	509966	191.44	(10.60)	30.92	(28.44)
VADILALIND	519156	183.01	8.80	21.36	58.69
VAKRANGEE	511431	704.30	3.40	84.94	11.50
VENKEYS	523261	558.28	26.70	15.82	901.27
VENUSREM	526953	98.91	(18.60)	0.19	(98.15)
VERITAS	512229	397.60	25.70	13.87	46.00
VICEROY	523796	29.28	17.40	(2.36)	26.90

VIJSHAN	523724	9.07	(31.90)	0.34	(53.42)
VIKASWSP	519307	160.10	(31.30)	0.85	(61.71)
VIVIDHA	506146	22.33	20.10	1.25	25.00
VISHNU	516072	109.56	31.00	6.39	185.27
VIVIMEDLAB	532660	332.96	(9.50)	24.17	41.10
VOLTAMP	532757	87.10	4.50	6.43	(4.46)
WSI	504220	2.10	(94.10)	(21.16)	(23.31)
WALCHANNAG	507410	117.13	(20.90)	(21.29)	(569.98)
WANBURY	524212	119.75	3.20	4.45	247.66
WARRENTEA	508494	19.17	(21.80)	0.14	(96.78)
WEIZFOREX	533452	1221.73	0.70	6.09	(0.65)
WEIZMANIND	523011	12.12	(4.70)	0.85	(11.46)
WINSOMTX	514470	162.80	(7.50)	10.25	88.42
XPROINDIA	590013	77.96	(0.40)	(5.45)	(9.88)
ZENTEC	533339	34.77	850.00	11.78	293.43
ZUARIGLOB	500780	0.58	(98.60)	2.34	5750.00

### Economic Calendar

Country	Monday 17th Aug 15	Tuesday 18th Aug 15	Wednesday 19th Aug 15	Thursday 20th Aug 15	Friday 21th Aug 15
US	NAHB Housing Market Index , Empire State Manufacturing Index	Building Permits ,Housing Starts .	CPI m/m , Core CPI m/m , Crude Oil Inventories , FOMC Meeting Minutes .	Unemployment Claims , Flash Manufacturing PMI , Philly Fed Manufacturing Index , Existing Home Sales , CB Leading Index m/m , Natural Gas Storage .	Flash Services PMI .
UK/EURO ZONE	Trade Balance , German Buba Monthly Report .	CPI y/y ,PPI Input m/m ,RPI y/y , Core CPI y/y , HPI y/y .	Current Account , Consumer Confidence ,	French Flash Manufacturing PMI ,French Flash Services PMI , German Flash Manufacturing PMI , German Flash Services PMI , Flash Manufacturing PMI , Flash Services PMI , Retail Sales m/m , Public Sector Net Borrowing .	
INDIA					

## Narnolia Securities Ltd.

### Narnolia Research Lab

Stellar IT Park | 5th Floor | Office Space No. 6 | Tower-IIInd Plot No. C-25 | Sector-62 | Noida | Ph : 0120-4215110

### Central Strategy Desk - Kolkata

124 | 1st Floor | 7/1 Lords Sinha Road | Kolkata - 71  
Ph : 033-22821500 | M : 93347 14418, 98302 69810