

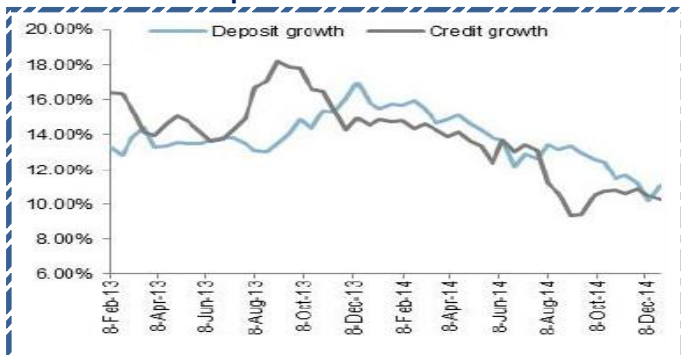
Quote of the Day

"You do things when the opportunities come along. I've had periods in my life when I've had a bundle of ideas come along, and I've had long dry spells. If I get an idea next week, I'll do something. If not, I won't do a damn thing."

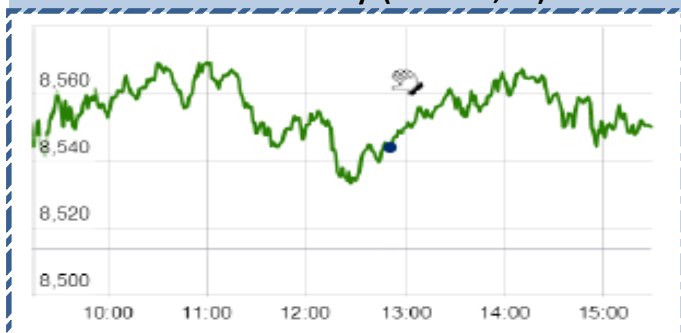
SGX NIFTY : 8603
(17.50 pts Up)

Chart of the Day

Deposit & Credit Growth



Index Action-Nifty (19th Jan, 15)



Index

Contents	Page	Coverage
News	3	UPDATE
Result Calendar Q3FY15	4 to 10	UPDATE
Result Q3FY15	11	UPDATE
Economic Calendar	10	UPDATE

MARKET

Name	Value	Change
Sensex	28262.01	140.12
Nifty	8550.7	36.90
DOW	Closed	
NASDAQ	Closed	
CAC	4394.93	15.31
DAX	10242.35	74.58
FTSE	6585.53	35.26
NIKIE	17270.65	256.36
HANG SENG	23833.76	95.27
EW ALL SHARE	14412.77	70.47

INSTITUTIONAL TURNOVER

FII			
Investor	Buy(Cr.)	Sale(Cr.)	Net(Cr.)
19th Jan	3695.66	3,261.94	433.72
Jan,15	50600.99	49,577.49	1023.50
2015	50600.99	49,577.49	1023.50
DII			
Investor	Buy(Cr.)	Sale(Cr.)	Net(Cr.)
19th Jan	1373.33	1,611.04	(237.71)
Jan,15	21875.49	49,577.49	(27702.00)
2015	21875.49	21,973.42	(97.93)

COMMODITY PRICE

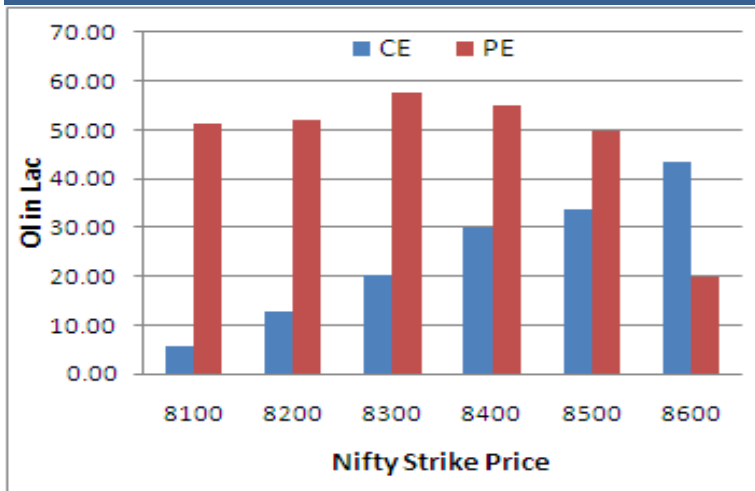
COMMODITY/CURRENCIES	Value	
GOLD	27695.00	↑
SILVER	38876.00	↓
CRUDEOIL	47.88	↓
COPPER	352.30	↓
NATURALGAS	182.90	↓
DOLLAR/RS.	61.71	↓
EURO/RS.	71.34	↓
POUND/RS.	92.83	↓

Narnolia Securities Ltd.

NIFTY SNAPSHOT	
Nifty Spot	8550.70(+36.90)
Nifty Jan 2014 Future	8578
Nifty Feb 2014 Future	8628
Nifty Jan 2014 Open Interest	20074375
Nifty Feb 2014 Open Interest	956700
7 DMA of Spot Nifty	8391
21 DMA of Spot Nifty	8296
50 DMA of Spot Nifty	8351
VOLATILITY INDEX (VIX)	17.65(+0.38)
PUT CALL RATIO	1.09



Nifty (Jan Series) Option OI Distribution:



Activity of Nifty (Jan Series) Strike

Strike	CALL		PUT	
	OI	% Chng	OI	% Chng
8100	552350	-2.20	5121625	-5.69
8200	1282350	-5.44	5201450	0.27
8300	2034250	-8.78	5755275	9.00
8400	2987925	-25.89	5489675	10.32
8500	3375300	0.37	4994550	24.74
8600	4345100	-6.95	1987250	13.96

FII's Activity (Fig in Cr)

Segment	Buy	Sell	Net
INDEX FUTURE	1,133	1,077	56
INDEX OPTION	10,260	10,915	(654)
STOCK FUTURE	2,546	2,454	92
STOCK OPTION	1,933	1,937	(4)
TOTAL	15,872	16,382	(510)

Fresh Long Seen In (Rising OI -Rising Price)

Scrip	OI	OI ch%	CMP	Ch%
WIPRO	91,66,500	7.7	584.5	5.3
JSWENERGY	343,56,000	5.8	112.8	5.1
AMBUJACEM	53,93,000	5.5	246.4	2.9
KTKBANK	236,40,000	5.3	153.1	6.6
CANBK	75,99,000	5.2	463.1	2.0

Fresh Shorts Seen In: (Rising OI -Falling Price)

Scrip	OI	OI ch%	CMP	Ch%
HEROMOTOCO	17,53,875	11.1	2841.8	-1.9
BPCL	43,89,000	10.3	645.5	-1.8
INDIACEM	235,04,000	8.4	99.8	-2.3
HINDUNILVR	90,81,500	6.6	892.8	-5.3
ADANI PORTS	73,21,000	6.5	328.6	-0.7

PCR (OI)

STOCK	T1	T2
JSWENERGY	0.47	0.29
AXISBANK	0.79	0.49
COLPAL	0.19	0.15
IDEA	0.36	0.30
FEDERALBNK	0.40	0.34

PCR (OI)

STOCK	T1	T2
HINDUNILVR	0.94	1.50
HCLTECH	0.73	0.91
KTKBANK	0.50	0.58
HAVELLS	0.28	0.33
HEROMOTOCO	0.30	0.35

Markets Snapshot

Top Price Performers

Top Performers 1D	% Change	Top Performers 1W	% Change	Top Performers 1M	% Change
SHANTIGEAR	20.00	NCOPPER	58.38	NTCIND	164.34
JKDAIRY	20.00	TAKE	57.66	ERAINFRA	124.73
SPARC	19.98	MIRZAIN	54.88	WEBELSOLAR	114.15
TAKE	19.97	JMTAUTOLD	52.33	SUNDARAM	101.08
BARTRONICS	19.97	ADSL	49.32	ISFT	93.68

Worst Price Performers

Worst Performers 1D	% Change	Worst Performers 1W	% Change	Worst Performers 1M	% Change
CLNINDIA	(16.03)	REISIXTEN	(25.00)	INFODRIVE	(88.49)
SHRENTH	(14.55)	OUTCTYTRVL	(21.94)	OUTCTYTRVL	(69.98)
SOFTSOL	(12.37)	KSERASERA	(20.91)	PRITI	(51.44)
SUBHKAM	(9.95)	BLCISER	(18.31)	KSERASERA	(49.57)
RESTILE	(9.53)	TANLA	(16.38)	JMDTELEFILM	(49.53)

Top News :

- **Gail** after market hours on Friday, 16 January 2015 said that there was an incident of fire on the DESU - Maruti pipeline of GAIL (India) near Venkateswara College, Dhaulakuan, New Delhi on 16 January 2015. The incident occurred due to a third party drilling activity without prior permission taken by the agency from GAIL, in spite of the pipeline warning markers located in close proximity to the site, the company said. Immediately on receiving the information, GAIL's pipeline sectionizing valves were closed by remote operation from the regional control room. With the support of Delhi Fire services and IGL Fire Tenders, the fire was extinguished, the company said. The Army Supply Corps located in the vicinity also rendered support. There have been no casualties, GAIL (India) said. However, the fire damaged a couple of vehicles parked nearby. Because of the incident, some CNG stations of IGL may get affected temporarily and efforts are being made to restore gas supply at the earliest. Restoration work of the pipeline has already started. GAIL (India) said.

- **GAIL Mgt** says the company has communicated with the government and will not be paying any subsidy burden for Q3, Q4 FY15. The company has already paid Rs 1000 crore towards the oil subsidy mechanism, but it is unclear if it will be exempted from paying the same in FY16.

- **Impco S. de R. L. de C. V., Mexico, Subsidiary Symphony**, is exploring the possibility of having lean manufacturing operation. This will happen over a period of time in phase. This is being exploring to achieve the following objectives: 1. To have a capital light & asset light business model in line with symphony's Indian operation. 2. Impco can focus more on sales & marketing, business development, research & development, product innovation etc. 3. To improve operational performance & provide flexibility in operation.

- **Tata Communications** announces investment for capacity purchase in Seaborn Networks' US-Brazil cable. Tata Communications and Seaborn Networks announce Tata Communications investment for purchase of significant capacity in Seaborn Networks cable system between Brazil and US.

- **Omaxe Ltd** has entered into Second Amendment Agreement with media Company i.e. Bennett Coleman and Company Ltd (BCCL).

- **Adani Enterprises** has approved the proposal to divest the Company's holding of 70.75 crore Equity shares in Maharashtra Eastern Grid Power Transmission Co. Ltd (MEGPTCL), to Adani Transmission Ltd, a Wholly Owned Subsidiary of the Company.

- **Career Point Ltd** has informed that consequent to acquisition of 4.99% equity shares of Career Point Edutech Limited (an unlisted subsidiary of Career Point Limited) by Career Point Limited, Career Point Edutech Limited has now become a wholly owned unlisted subsidiary (WOS-100%) of Career Point Limited with effect January 19, 2015.

- **European Central Bank** said that the euro zone current account recorded a seasonally adjusted surplus of €18.1 billion in November, narrowing from a surplus of €19.5 billion in October. Economists had expected the region's current account surplus to widen to €21.3 billion in November.

- **Hong Kong Unemployment Rate** remained unchanged at a seasonally adjusted 3.3%, from 3.3% in the preceding month. Analysts had expected Hong Kong Unemployment Rate to remain unchanged at 3.3% last month.

- **Federal Statistical Office said that Swiss PPI** fell to a seasonally adjusted -0.4%, from -0.7% in the preceding month. Analysts had expected Swiss PPI to fall -0.6% last month.

- **Janpaese industrial production** fell to a seasonally adjusted -0.5%, from -0.6% in the preceding month. Analysts had expected industrial production to fall -0.6% last month.

Result Calendar Q3FY15

Bse Coade	Company Name	Date	Bse Coade	Company Name	Date
538465	AMARSEC	20-Jan-15	500875	ITC	21-Jan-15
532694	BARTRONICS	20-Jan-15	590053	KARMOB-\$	21-Jan-15
500042	BASF	20-Jan-15	532400	KPIT	21-Jan-15
509438	BENARAS	20-Jan-15	533519	L&T;TFH	21-Jan-15
512404	BENGALS	20-Jan-15	531027	LIBORD	21-Jan-15
524606	BERLDRG	20-Jan-15	511593	LIBORDFIN	21-Jan-15
531582	BERYLSE	20-Jan-15	512455	LLOYDSME	21-Jan-15
511196	CANFINHOME	20-Jan-15	530065	LORDSHOTL	21-Jan-15
531595	CGCL	20-Jan-15	532654	MCLEODRUSS	21-Jan-15
506365	CHEMOPH	20-Jan-15	523828	MENONBE-\$	21-Jan-15
507886	DHRUVES	20-Jan-15	512522	NEPTEXP	21-Jan-15
531471	DUKEOFS	20-Jan-15	531395	PADAMCO	21-Jan-15
532511	EXCELCROP	20-Jan-15	508941	PANCARBON-\$	21-Jan-15
500174	GLFL	20-Jan-15	511734	PASUFIN	21-Jan-15
534328	HEXATRADEX	20-Jan-15	532826	RAJTV	21-Jan-15
533217	HMVL	20-Jan-15	532988	RANEENGINE	21-Jan-15
530055	HRMNYCP	20-Jan-15	500330	RAYMOND	21-Jan-15
517380	IGARASHI	20-Jan-15	531201	SHILCTECH	21-Jan-15
500378	JINDALSAW	20-Jan-15	503811	SIYSIL	21-Jan-15
532642	JSWHL	20-Jan-15	500405	SUPPETRO	21-Jan-15
538539	JTAPARIA	20-Jan-15	519604	SURFI	21-Jan-15
512147	KAJALSY	20-Jan-15	500408	TATAELXSI	21-Jan-15
533293	KIRLOSENG	20-Jan-15	512011	TEATIME	21-Jan-15
500247	KOTAKBANK	20-Jan-15	532410	TRANSCOR	21-Jan-15
512505	MEENST	20-Jan-15	507747	TTKHEALTH	21-Jan-15
532504	NAVINFLUOR	20-Jan-15	517506	TTKPRESTIG	21-Jan-15
522205	PRAJIND	20-Jan-15	514142	TTL-\$	21-Jan-15
500355	RALLIS	20-Jan-15	505537	ZEEL	21-Jan-15
507649	RASOI	20-Jan-15	504988	ZWELCAST	21-Jan-15
532692	RMCL	20-Jan-15	522273	AHMDSTE	22-Jan-15
536666	SFCL	20-Jan-15	506235	ALEMBICLTD	22-Jan-15
531322	SHAKTIGAS	20-Jan-15	526397	ALPHAGEO-\$	22-Jan-15
531431	SHAKTIPUMP-\$	20-Jan-15	512247	ASHCAP	22-Jan-15
538685	SHEMAROO	20-Jan-15	512433	ASUTENT	22-Jan-15
538565	SHUBHRA	20-Jan-15	500215	ATFL	22-Jan-15
532218	SOUTHBANK	20-Jan-15	526849	BANARBEADS	22-Jan-15
504961	TATAYODOGA-\$	20-Jan-15	532523	BIOCON	22-Jan-15
512303	ZMANSOON	20-Jan-15	532792	CAIRN	22-Jan-15
512004	ZNILKENG	20-Jan-15	506401	DEEPAKNI	22-Jan-15
531581	ALKADIA	21-Jan-15	519588	DFM	22-Jan-15
500012	ANDHRAPET	21-Jan-15	532839	DISHTV	22-Jan-15
522005	AUSTENG	21-Jan-15	500630	ESSARPORTS	22-Jan-15
500067	BLUESTARCO	21-Jan-15	500179	HCL-INSYS	22-Jan-15
532548	CENTURYPLY	21-Jan-15	502330	IPAPPM	22-Jan-15
504008	EMCO-\$	21-Jan-15	505283	KIRLPNU	22-Jan-15
508906	EVERESTIND	21-Jan-15	523704	MASTEK	22-Jan-15
524669	HESTERBIO	21-Jan-15	533088	MHRIL	22-Jan-15
507438	IFBAGRO	21-Jan-15	512065	MRUTR	22-Jan-15
531807	INGVYSYABK	21-Jan-15	533398	MUTHOOTFIN	22-Jan-15
500214	IONEXCHANG-\$	21-Jan-15	532200	MYSOREBANK	22-Jan-15

508924	NORTHPR	22-Jan-15	531096	MOUNTEVE	23-Jan-15
535754	ORIENTCEM	22-Jan-15	532416	NEXTMEDIA	23-Jan-15
500162	PARRYSUGAR	22-Jan-15	530175	ODYSSEY-\$	23-Jan-15
532742	PAUSHAKLTD	22-Jan-15	520021	OMAXAUTO	23-Jan-15
500143	PHCAP	22-Jan-15	500314	ORIENTHOT	23-Jan-15
506590	PHILPCARB	22-Jan-15	500327	PILIND	23-Jan-15
532254	POLARIS	22-Jan-15	522257	RAJOOENG-\$	23-Jan-15
533274	PRESTIGE	22-Jan-15	532987	RBL	23-Jan-15
532661	RML	22-Jan-15	532983	RPGLIFE	23-Jan-15
502090	SAGCEM	22-Jan-15	511640	SANGHCO	23-Jan-15
507894	SCHABLON	22-Jan-15	501267	SHRERAN	23-Jan-15
538875	SELLWIN	22-Jan-15	523363	STERLINH	23-Jan-15
532725	SOLARINDS	22-Jan-15	506854	TANFACIND-\$	23-Jan-15
531548	SOMANYCERA	22-Jan-15	501242	TCIFINANCE	23-Jan-15
517166	SPELS	22-Jan-15	531846	TRINITYLEA	23-Jan-15
533121	SQSBSFI	22-Jan-15	532538	ULTRACEMCO	23-Jan-15
532374	STRTECH	22-Jan-15	511736	USHDI	23-Jan-15
524542	SUKHIJTS-\$	22-Jan-15	533023	WABCOINDIA	23-Jan-15
509930	SUPREMEIND	22-Jan-15	531340	BERVINL	24-Jan-15
512257	SVARTCORP	22-Jan-15	532210	CUB	24-Jan-15
510245	SWASTIVI	22-Jan-15	532329	DANLAW-\$	24-Jan-15
513434	TATAMETALI	22-Jan-15	532345	GATI	24-Jan-15
532262	TCIIND	22-Jan-15	531531	HATSUN	24-Jan-15
523301	TCPLPACK-\$	22-Jan-15	500236	KANELIND	24-Jan-15
504966	TINPLATE	22-Jan-15	532741	KIL	24-Jan-15
512064	VISTR	22-Jan-15	533179	PERSISTENT	24-Jan-15
534976	VMART	22-Jan-15	526095	RALEGRA	24-Jan-15
509966	VSTIND	22-Jan-15	532029	SINDHUTRAD	24-Jan-15
511038	ZARCOLEA	22-Jan-15	531169	SKPSEC	24-Jan-15
532794	ZEEMEDIA	22-Jan-15	511218	SRTRANSFIN	24-Jan-15
534742	ZUARI	22-Jan-15	532301	TATACOFFEE	24-Jan-15
531161	ABMKNO	23-Jan-15	532432	UNITDSPR	24-Jan-15
523411	ADCINDIA	23-Jan-15	505216	ALFREDHE	27-Jan-15
532309	AIL	23-Jan-15	500008	AMARAJABAT	27-Jan-15
527001	ASHAPURMIN	23-Jan-15	513729	AROGRANITE-\$	27-Jan-15
500027	ATUL	23-Jan-15	522004	BATLIBOI-\$	27-Jan-15
503960	BBL-\$	23-Jan-15	512313	BIJLTEX	27-Jan-15
500049	BEL	23-Jan-15	500110	CHENNPETRO	27-Jan-15
500830	COLPAL	23-Jan-15	511243	CHOLAFIN	27-Jan-15
506395	COROMANDEL	23-Jan-15	512445	DEVITRD	27-Jan-15
501148	DSINVEST	23-Jan-15	533208	EMAMIPAP	27-Jan-15
532922	EDELWEISS	23-Jan-15	531508	EVEREADY	27-Jan-15
523754	EPCIN	23-Jan-15	523113	FUTURSEC	27-Jan-15
590065	IMPAL	23-Jan-15	500171	GHCL	27-Jan-15
501151	KARTKIN	23-Jan-15	533150	GODREJPROP	27-Jan-15
506528	KELENRG	23-Jan-15	500690	GSFC	27-Jan-15
507948	KEYCORP	23-Jan-15	505982	HINDUJAFI-\$	27-Jan-15
532924	KOLTEPATIL	23-Jan-15	532822	IDEA	27-Jan-15
526596	LIBERTSHOE	23-Jan-15	512329	JARITEX	27-Jan-15
501471	MACK	23-Jan-15	524731	JENBURPH	27-Jan-15
526642	MIRZAINI	23-Jan-15	532652	KTKBANK	27-Jan-15
503015	MODERN-\$	23-Jan-15	524103	LINEARPO	27-Jan-15

505320	LYNMC	27-Jan-15	500477	ASHOKLEY	29-Jan-15
532500	MARUTI	27-Jan-15	526187	ASHRAM	29-Jan-15
531209	NUCLEUS	27-Jan-15	500820	ASIANPAINT	29-Jan-15
512115	ROSEMER	27-Jan-15	513375	CARBORUNIV	29-Jan-15
512309	ROSETEX	27-Jan-15	521210	CITYMAN	29-Jan-15
532841	SAHYADRI	27-Jan-15	533309	DALMIABHA	29-Jan-15
516108	STHINPA	27-Jan-15	500124	DRREDDY	29-Jan-15
532812	TFL	27-Jan-15	500133	ESABINDIA	29-Jan-15
500114	TITAN	27-Jan-15	500135	ESSELPRO	29-Jan-15
532477	UNIONBANK	27-Jan-15	506803	FULFORD	29-Jan-15
524200	VINATIORGA	27-Jan-15	513108	GANDHITUBE-₹	29-Jan-15
524129	VINYLINDIA	27-Jan-15	531953	GCCL	29-Jan-15
505412	WENDT	27-Jan-15	531375	GCCLINP	29-Jan-15
512297	WHELTEX	27-Jan-15	530855	GDLLEAS	29-Jan-15
501270	ZCHANAIN	27-Jan-15	531399	GGAUTO	29-Jan-15
523204	ABAN	28-Jan-15	531360	GOLECHA	29-Jan-15
532331	AJANTPHARM	28-Jan-15	506076	GRINDWELL	29-Jan-15
506767	ALKYLAMINE	28-Jan-15	511441	GUJCREC	29-Jan-15
531310	AVAILFC	28-Jan-15	517372	GUJINTRX-₹	29-Jan-15
519105	AVTNPL	28-Jan-15	500185	HCC	29-Jan-15
505688	BHARATGEAR	28-Jan-15	500010	HDFC	29-Jan-15
532974	BIRLAMONEY-₹	28-Jan-15	523398	HITACHIOM	29-Jan-15
533108	BTTL	28-Jan-15	532835	ICRA	29-Jan-15
526821	DAICHI-₹	28-Jan-15	532659	IDFC	29-Jan-15
500840	EIHOTEL	28-Jan-15	532150	INDRAMEDCO	29-Jan-15
531162	EMAMILTD	28-Jan-15	511208	IVC	29-Jan-15
500150	FOSECOIND	28-Jan-15	523592	JENSONICOL	29-Jan-15
531600	GOGIACAP	28-Jan-15	590003	KARURVYSYA	29-Jan-15
532482	GRANULES	28-Jan-15	500245	KIRLFER	29-Jan-15
509546	GRAVISSHO	28-Jan-15	523207	KOKUYOCLN	29-Jan-15
517354	HAVELLS	28-Jan-15	523323	KOVAI	29-Jan-15
523405	JMFINANCIL	28-Jan-15	530139	KREONFIN	29-Jan-15
535648	JUSTDIAL	28-Jan-15	507912	LKPFIN	29-Jan-15
532926	JYOTHYLAB	28-Jan-15	516062	NATPLY	29-Jan-15
526179	LUDLOWJUT	28-Jan-15	500313	OILCOUNTUB	29-Jan-15
521018	MARALOVER	28-Jan-15	531539	RISHDIGA-₹	29-Jan-15
531319	MARUTISE	28-Jan-15	532699	ROHLTD	29-Jan-15
504882	NATIONSTD	28-Jan-15	531324	ROSELABS	29-Jan-15
500730	NOCIL	28-Jan-15	509423	SEL	29-Jan-15
532481	NOIDATOLL	28-Jan-15	532498	SHRIRAMCIT	29-Jan-15
500331	PIDILITIND	28-Jan-15	533228	SKSMICRO	29-Jan-15
590055	POLYSPIN	28-Jan-15	505827	SNL	29-Jan-15
512481	POLYTEX	28-Jan-15	500295	SSLT	29-Jan-15
512461	PUNCTRD	28-Jan-15	530883	SUCROSA	29-Jan-15
500359	RANBAXY	28-Jan-15	500407	SWARAJENG	29-Jan-15
532923	RJL	28-Jan-15	532390	TAJGVK	29-Jan-15
501154	ROSEI	28-Jan-15	521228	TATIAGLOB	29-Jan-15
501061	SBBJ	28-Jan-15	532349	TCI	29-Jan-15
521194	SILINV	28-Jan-15	533393	TCIDEVELOP	29-Jan-15
500420	TORNTPHARM	28-Jan-15	531652	THIRDFIN	29-Jan-15
505583	WWTECHHOL	28-Jan-15	511559	TIMESGTY	29-Jan-15
500710	AKZOINDIA	29-Jan-15	500414	TIMEX-₹	29-Jan-15

524717	TITANBIO	29-Jan-15	500228	JSWSTEEL	30-Jan-15
500251	TRENT	29-Jan-15	500165	KANSAINER	30-Jan-15
532371	TTML	29-Jan-15	505890	KENNAMET	30-Jan-15
512117	TWIROST	29-Jan-15	531692	KHYATI	30-Jan-15
532156	VAIBHAVGBL	29-Jan-15	532352	KIRLMU	30-Jan-15
512511	VARUNME	29-Jan-15	500241	KIRLOSBROS	30-Jan-15
501370	WALCHPF	29-Jan-15	502150	KLYNCEM	30-Jan-15
511601	YASHMGM	29-Jan-15	511138	KOTHARIFIN	30-Jan-15
512587	ZODJRD MJ	29-Jan-15	500250	LGBBROSLTD	30-Jan-15
503893	ZSATYASL	29-Jan-15	533007	LGBFORGE	30-Jan-15
521097	AMARJOTHI	30-Jan-15	517449	MAGNAELQ-\$	30-Jan-15
532134	BANKBARODA	30-Jan-15	532313	MAHLIFE	30-Jan-15
524687	BASANTGL-\$	30-Jan-15	526891	MKTCREAT	30-Jan-15
509480	BERGEPAIN	30-Jan-15	509196	MMRUBBR-B	30-Jan-15
511698	BHAGYFN	30-Jan-15	509760	MODRNSH	30-Jan-15
524723	BIJHANS	30-Jan-15	524084	MONSANTO	30-Jan-15
500059	BINANIIND	30-Jan-15	531049	NEELKAN	30-Jan-15
535620	BINNYMILLS	30-Jan-15	500452	NEPCAGRO	30-Jan-15
500069	BNKCAP	30-Jan-15	500301	NEPCMICON	30-Jan-15
517544	CENTUM	30-Jan-15	531077	NEPCPAPER	30-Jan-15
500147	CMIFPE-\$	30-Jan-15	521192	NEPCTEX	30-Jan-15
504340	CONFINT	30-Jan-15	524558	NEULANLAB	30-Jan-15
506935	CONTCHM	30-Jan-15	523209	NICCOUCO	30-Jan-15
531067	CONTILI	30-Jan-15	512103	NIDHGRN	30-Jan-15
526269	CRSTCHM	30-Jan-15	521009	NIWASSP	30-Jan-15
500096	DABUR	30-Jan-15	514460	OSWAYRN	30-Jan-15
500097	DALMIASUG	30-Jan-15	511702	PARSHINV	30-Jan-15
532927	ECLERX	30-Jan-15	530253	RAJTUBE	30-Jan-15
503681	ELCIDIN	30-Jan-15	530271	RICHUNV	30-Jan-15
504387	ELFTRDG	30-Jan-15	504365	RIDHISYN	30-Jan-15
517477	ELNET-\$	30-Jan-15	530917	RRSECUR	30-Jan-15
526574	ENTRINT	30-Jan-15	511403	SAIJEEV	30-Jan-15
514060	EVERTEX	30-Jan-15	515043	SAINTGOBAIN	30-Jan-15
500650	EXCELINDUS	30-Jan-15	531893	SAWABUSI	30-Jan-15
531754	FINCOM	30-Jan-15	532638	SHOPERSTOP	30-Jan-15
505714	GABRIEL	30-Jan-15	503696	SHRENTI	30-Jan-15
502856	GNDHISP	30-Jan-15	523790	SHUKJEW	30-Jan-15
500670	GNFC	30-Jan-15	531219	SHYAMAINFO	30-Jan-15
513343	GRANDFONRY	30-Jan-15	530439	SIDDHA	30-Jan-15
532015	GRAVITY-\$	30-Jan-15	500550	SIEMENS	30-Jan-15
530469	GSLSEC	30-Jan-15	531506	SKRABUL	30-Jan-15
530141	GYANDEV	30-Jan-15	512014	SOBME	30-Jan-15
532281	HCLTECH	30-Jan-15	532872	SPARC	30-Jan-15
519552	HERITGFOOD	30-Jan-15	514442	SRIKPRIND	30-Jan-15
500189	HINDUJAVEN	30-Jan-15	501110	SUNRINV	30-Jan-15
532174	ICICIBANK	30-Jan-15	532733	SUNTV	30-Jan-15
532100	INDOCITY-\$	30-Jan-15	511447	SYLPH	30-Jan-15
532612	INDOCO	30-Jan-15	500800	TATAGLOBAL	30-Jan-15
505358	INTEGRAEN	30-Jan-15	532755	TECHM	30-Jan-15
538835	INTELLECT	30-Jan-15	517407	TOYAMAQ-\$	30-Jan-15
506161	ISHWATR	30-Jan-15	530783	TRANSASIA	30-Jan-15
509715	JAYSHRETEA	30-Jan-15	504273	TUMUSEL	30-Jan-15

511096	TVOLCON	30-Jan-15	532779	TORNTPOWER	31-Jan-15
524038	VENLONENT	30-Jan-15	531279	TRISHAKT	31-Jan-15
530401	VINYOFL	30-Jan-15	524408	UNIVSTAR	31-Jan-15
500238	WHIRLPOOL	30-Jan-15	531762	UNJHAFOR	31-Jan-15
590013	XPROINDIA	30-Jan-15	538873	WINYCOMM	31-Jan-15
512345	YASTF	30-Jan-15	520119	ASAL	02-Feb-15
533287	ZEELEARN	30-Jan-15	511742	CHOKSEC	02-Feb-15
509046	ZLEENCON	30-Jan-15	523708	EIMCOELECO	02-Feb-15
512008	AMANITRA	31-Jan-15	511676	GICHSGFIN	02-Feb-15
531519	ANKUSHFI	31-Jan-15	522289	IFMIMPX	02-Feb-15
526125	ARHNTTO	31-Jan-15	532054	KDDL-\$	02-Feb-15
512038	ASWTR	31-Jan-15	500252	LAXMIMACH	02-Feb-15
502216	BOMBPOT	31-Jan-15	532915	RELIGARE	02-Feb-15
531203	BRANDREAL	31-Jan-15	509845	RJSHAH	02-Feb-15
507486	CAPRO	31-Jan-15	517168	SUBROS	02-Feb-15
530789	CEEJAY	31-Jan-15	512527	SUPER-\$	02-Feb-15
538786	CIL	31-Jan-15	532368	YBRANTDIGI	02-Feb-15
531210	COLINZ	31-Jan-15	500410	ACC	03-Feb-15
521216	DHANROTO	31-Jan-15	500825	BRITANNIA	03-Feb-15
503796	DIGJAM	31-Jan-15	500645	DEEPAKFERT	03-Feb-15
531533	ECOM	31-Jan-15	505700	ELECON	03-Feb-15
500086	EXIDEIND	31-Jan-15	530835	ELTROL	03-Feb-15
530705	FLORATX	31-Jan-15	500676	GSKCONS	03-Feb-15
531608	GORANIN	31-Jan-15	500182	HEROMOTOCO	03-Feb-15
500300	GRASIM	31-Jan-15	531968	IITLPROJ	03-Feb-15
538838	ICL	31-Jan-15	533047	IMFA	03-Feb-15
531672	INANISEC	31-Jan-15	504741	INDIANHUME	03-Feb-15
530405	JINDCAP	31-Jan-15	500257	LUPIN	03-Feb-15
530915	JRFOODS	31-Jan-15	531528	MAARSOFTW	03-Feb-15
514448	JYOTIRES	31-Jan-15	532641	NDL	03-Feb-15
533297	KBIL	31-Jan-15	506532	NITTAGELA-\$	03-Feb-15
508993	KEDIACN	31-Jan-15	502420	ORIENTPPR	03-Feb-15
500243	KIRLOSIND	31-Jan-15	532810	PFC	03-Feb-15
532732	KKCL	31-Jan-15	500387	SHREECEM	03-Feb-15
530243	MANGASOF	31-Jan-15	505650	SKYLMILAR	03-Feb-15
531221	MAYURFL	31-Jan-15	590072	SUNDRMBRAK	03-Feb-15
526251	MIDEASTP	31-Jan-15	534369	TBZ	03-Feb-15
505594	MULTIIN	31-Jan-15	522113	TIMKEN	03-Feb-15
531272	NIKKIGL	31-Jan-15	506687	TRANSPEK-\$	03-Feb-15
508875	NITINALOY	31-Jan-15	532343	TVSMOTOR	03-Feb-15
530669	PRESOFI	31-Jan-15	530889	ALKA	04-Feb-15
526009	PROCAL	31-Jan-15	532047	ASIANFILMS	04-Feb-15
520073	RAUNAUQU	31-Jan-15	500040	CENTURYTEX	04-Feb-15
532527	RKFORGE	31-Jan-15	521056	CHESLINTEX	04-Feb-15
519397	SHINDL	31-Jan-15	522261	DOLPHINOFF-\$	04-Feb-15
522152	SOLIMAC	31-Jan-15	508486	HAWKINCOOK	04-Feb-15
524667	SOTL	31-Jan-15	501295	IITL	04-Feb-15
513488	SSWRL	31-Jan-15	512237	JAICORPLTD	04-Feb-15
538876	STSERV	31-Jan-15	506943	JBCHEPHARM	04-Feb-15
505685	TAPARIA	31-Jan-15	507779	KANPRPLA	04-Feb-15
524204	TEEAI	31-Jan-15	524000	MAGMA	04-Feb-15
531814	TIRSARJ	31-Jan-15	506261	MODISNME-\$	04-Feb-15

523630	NFL	04-Feb-15	506947	ADVPETR-B	10-Feb-15
500672	NOVARTIND	04-Feb-15	534804	CARERATING	10-Feb-15
506579	ORIENTCQ-\$	04-Feb-15	504671	CHASBRT	10-Feb-15
520056	SUNCLAYLTD	04-Feb-15	523736	DPL	10-Feb-15
500403	SUNDRMFAST	04-Feb-15	513059	GSAUTO	10-Feb-15
500400	TATAPOWER	04-Feb-15	536868	INTELSOFT	10-Feb-15
533158	THANGAMAYL	04-Feb-15	517334	MOTHERSUMI	10-Feb-15
519224	WILLAMAGOR	04-Feb-15	526721	NICCOPAR-\$	10-Feb-15
519214	WILLIMFI	04-Feb-15	526801	PSL	10-Feb-15
513117	AMFORG	05-Feb-15	512099	PUNITCO	10-Feb-15
531878	ANJANIFIN	05-Feb-15	517496	RICOHQ	10-Feb-15
530429	ASHISHPO	05-Feb-15	530035	SANTOSHf	10-Feb-15
530885	AURUMSOFT	05-Feb-15	511185	SURYAKR	10-Feb-15
531719	BHAGCHEM	05-Feb-15	531091	UNITDCR	10-Feb-15
532173	CYBERTECH	05-Feb-15	500780	ZUARIGLOB	10-Feb-15
532424	GODREJCP	05-Feb-15	526851	AREXMIS	11-Feb-15
507598	KLRF	05-Feb-15	519174	ASHAI	11-Feb-15
504258	LAKSELEC	05-Feb-15	506820	ASTRAZEN	11-Feb-15
524709	NAGAAGRI	05-Feb-15	500043	BATAINDIA	11-Feb-15
535755	PFRL	05-Feb-15	531237	DHRUVCA	11-Feb-15
500260	RAMCOCEM	05-Feb-15	500164	GODREJIND	11-Feb-15
532513	TVSELECT	05-Feb-15	530557	NCLRESE	11-Feb-15
530973	ALFAICA	06-Feb-15	520151	SHREYAS	11-Feb-15
531179	ARMANFIN	06-Feb-15	512153	SPECMKT	11-Feb-15
532834	CAMLINFIN	06-Feb-15	509038	VOLLF	11-Feb-15
500085	CHAMBLFERT	06-Feb-15	530799	ANNAINFRA	12-Feb-15
590084	KANCOENT	06-Feb-15	500031	BAJAJELEC	12-Feb-15
521242	KANDAGIRI-\$	06-Feb-15	508939	BLCISER	12-Feb-15
517344	MINDTECK	06-Feb-15	530779	DYNAMICP	12-Feb-15
532460	PONNIERODE	06-Feb-15	531463	GBLINFRA	12-Feb-15
531412	RADIXIND	06-Feb-15	505250	GGDANDE	12-Feb-15
521240	SAMBANDAM-\$	06-Feb-15	507815	GILLETTE	12-Feb-15
503804	SHRIDINE-\$	06-Feb-15	526931	HRYNshp-\$	12-Feb-15
505192	SMLISUZU	06-Feb-15	532001	INDCTST	12-Feb-15
508963	STRLGUA	06-Feb-15	538422	JACKSON	12-Feb-15
500770	TATACHEM	06-Feb-15	526558	JAMEHOT	12-Feb-15
530199	THEMISMED	06-Feb-15	511092	JMDTELEFILM	12-Feb-15
530803	BHAGERIA	07-Feb-15	535730	KHOOBSURAT	12-Feb-15
530307	CHAMANSEQ-\$	07-Feb-15	531689	MAHAREM	12-Feb-15
531599	FDC	07-Feb-15	530897	NGIND-\$	12-Feb-15
517300	GIPCL	07-Feb-15	511632	OLYMTFI	12-Feb-15
532644	JKCEMENT	07-Feb-15	535658	PAWANSUT	12-Feb-15
521127	KHTRFIB	07-Feb-15	500459	PGHH	12-Feb-15
526947	LAOPALA	07-Feb-15	523236	SHRENUJ	12-Feb-15
502450	SESHAPAPER	07-Feb-15	526901	SONALAD	12-Feb-15
516030	YASHPPR-\$	07-Feb-15	526161	SPENTA	12-Feb-15
530233	AUROLAB	09-Feb-15	526827	SPICEISL-\$	12-Feb-15
531278	AXISCAP	09-Feb-15	526941	VAICC	12-Feb-15
523248	MACPLASQ-\$	09-Feb-15	526775	VALIANT-\$	12-Feb-15
500307	NIRLON	09-Feb-15	515099	VERTICLIND	12-Feb-15
531944	SERVOTEC	09-Feb-15	511122	1STCUS	13-Feb-15
522267	VJLAXMIE-\$	09-Feb-15	521174	ARORAFIB	13-Feb-15
500002	ABB	10-Feb-15	517203	BEELE	13-Feb-15
526331	ADVMULT	10-Feb-15	519500	BKV	13-Feb-15

532324	CINEVISTA	13-Feb-15	501343	MOTOGENFIN	13-Feb-15
512213	CLASELE	13-Feb-15	526299	MPHISIS	13-Feb-15
530859	COSBOARD	13-Feb-15	534184	NAGAROIL	13-Feb-15
505678	CPECLTD	13-Feb-15	514332	NEOINFRA	13-Feb-15
530171	DAULAT	13-Feb-15	511714	NIMBSPROJ	13-Feb-15
535486	DELTALTD	13-Feb-15	514324	OMNITEX	13-Feb-15
531252	FARRYIND	13-Feb-15	535514	PRIMECAPM	13-Feb-15
534757	FOCUSIRL	13-Feb-15	515127	RAMMA	13-Feb-15
531196	GAGANPO	13-Feb-15	531583	RAP	13-Feb-15
521176	GANGOTRI	13-Feb-15	531033	REGAL	13-Feb-15
531479	GLOBAL	13-Feb-15	507952	SHIKHARLETR	13-Feb-15
531737	GREENCREST	13-Feb-15	506655	SUDARSCHEM	13-Feb-15
511543	GSBFIN	13-Feb-15	531411	TUNITEX	13-Feb-15
531918	HINDAPL	13-Feb-15	531831	UNISH	13-Feb-15
517044	IDM	13-Feb-15	511690	WARNER	13-Feb-15
500202	INDLEASE	13-Feb-15	509910	ZSOUTGAS	13-Feb-15
504840	KAIRA	13-Feb-15	533144	COX&KINGS	14-Feb-15
504269	KHAITANELE	13-Feb-15	526073	GALXBRG	14-Feb-15
523652	KPLASTIK	13-Feb-15	532133	IFGLREFRAC	14-Feb-15
531288	LEADFIN	13-Feb-15	509040	NETLINK	14-Feb-15
506113	LIFELINE	13-Feb-15	530125	SAMRATPH-\$	14-Feb-15
532537	LUMAXAUTO	13-Feb-15	526532	SFPIL	14-Feb-15
500520	M&M	13-Feb-15	512221	TARCF	14-Feb-15
514456	METROOV	13-Feb-15	500425	AMBUJACEM	18-Feb-15
532164	MINOLTAF	13-Feb-15	500166	GOODRICKE	28-Feb-15

Economic Calendar					
	Monday 19-Jan-15	Tuesday 20-Jan-15	Wednesday 21-Jan-15	Thursday 22-Jan-15	Friday 23-Jan-15
US		Flash Manufacturing PMI , NAHB Housing Market Index .	Building Permits , Crude Oil Inventories .	Unemployment Claims ,Flash Services PMI , Natural Gas Storage .	Existing Home Sales .CB Leading Index m/m .
UK/EURO ZONE	German Buba Monthly Report .	German Buba Monthly Report , French Flash Manufacturing PMI , French Flash Services PMI , German Flash Manufacturing PMI , German Flash Services PMI , Flash Manufacturing PMI , German ZEW Economic Sentiment , ZEW Economic Sentiment .	Average Earnings Index 3m/y , Claimant Count Change , MPC Official Bank Rate Votes , MPC Asset Purchase Facility Votes , Unemployment Rate .	Spanish Unemployment Rate , Public Sector Net Borrowing , CBI Realized Sales , Minimum Bid Rate , ECB Press Conference .	Retail Sales m/m .
INDIA					

Consensus Estimate Q3FY15

BSE Code	NSE Code	Sales (Cr.)	Sales Growth(%)	PAT(Cr.)	PAT Growth (%)
500049	BEL	1409.7	198.40	197.7	17.30
532538	ULTRACEMCO	5713.2	997.10	411.9	19.40
500830	COLPAL	1021	183.90	137.5	15.50
500696	HINDUNILVR	8111.8	1411.50	1058.8	12.30
500875	ITC	9774.1	3772.80	2802.5	12.00
532432	MCDOWELL-N	2437.9	243.80	108.5	7.00
532523	BIOCON	768.7	178.30	107.8	9.80
532839	DISHTV	713.6	181.20	-0.2	14.40
505537	ZEEL	1239.7	398.20	293.4	4.30
500188	HINDZINC	4078.4	2234.10	2366	18.20
506395	COROMANDEL	3067.6	248.50	124.9	11.30
532777	NAUKRI	154.2	51.30	51.4	25.00
532792	CAIRN	3223	1952.40	1433.2	(35.50)
533274	PRESTIGE	630.5	167.10	103.2	46.50
532400	KPIT	768.4	109.60	67.1	13.40
532819	MINDTREE	916.4	184.50	142.5	15.90
533179	PERSISTENT	495.8	117.60	74.8	14.60
531807	INGVYSYABK	512.3	338.20	185	23.10
500247	KOTAKBANK	1076.7	743.60	459.4	18.00
535789	IBULHSGFIN	572.3	602.30	457.7	(1.30)
511218	SRTRANSFIN	1042.6	789.60	336.3	11.90

Result Q3FY15

BSE Code	NSE Code	Sales (Cr.)	Sales Growth(%)	PAT(Cr.)	PAT Growth (%)
UNICHEMLAB	506690	262.90	(0.80)	2.10	(97.20)
OBEROIRLTY	533273	217.00	27.60	79.20	15.50
M&MFIN	532720	1511.80	11.30	156.80	(14.00)
GUJFLUORO	500173	1607.46	87.30	137.25	382.30
SYMPHONY	517385	151.41	27.00	36.02	45.30
INDLMETER	517571	99.15	38.20	2.75	358.30
ATULAUTO	531795	139.33	13.20	11.31	17.32
GOODLUC	530655	261.62	3.40	7.37	197.18
IBSEC	532960	56.55	(28.00)	42.56	54.20
NAUKRI	532777	145.70	18.10	38.60	19.80
HIL	509675	245.99	23.10	8.44	7133.33
GRUH	511288	271.00	24.70	44.74	26.96
HINDUNILVR	500696	7774.63	7.60	1252.71	17.92
KANANIIND	506184	12.43	117.30	(0.18)	86.67
SSWL	513262	266.67	6.80	9.55	45.36
HINDZINC	500188	3803.73	10.30	2379.23	38.11
MINDTREE	532819	911.70	15.30	140.80	58.56
ZENSARTECH	504067	289.93	27.90	46.41	4.53
CCL	519600	241.30	21.70	26.10	51.80
ANTFRIBEAR	505665	38.66	28.20	0.93	75.47
BHARATSE	523229	177.63	25.50	2.09	0.97



Narnolia Securities Ltd

124, 1st floor 7/ 1, Lords Sinha Road Kolkata 700071, Ph 033-22821251 Toll Free no : 1-800-345-4000

email: research@narnolia.com,

website : www.narnolia.com

Risk Disclosure & Disclaimer: This report/message is for the personal information of the authorized recipient and does not construe to be any investment, legal or taxation advice to you. Narnolia Securities Ltd. (Hereinafter referred as NSL) is not soliciting any action based upon it. This report/message is not for public distribution and has been furnished to you solely for your information and should not be reproduced or redistributed to any other person in any form. The report/message is based upon publicly available information, findings of our research wing "East wind" & information that we consider reliable, but we do not represent that it is accurate or complete and we do not provide any express or implied warranty of any kind, and also these are subject to change without notice. The recipients of this report should rely on their own investigations, should use their own judgment for taking any investment decisions keeping in mind that past performance is not necessarily a guide to future performance & that the the value of any investment or income are subject to market and other risks. Further it will be safe to assume that NSL and /or its Group or associate Companies, their Directors, affiliates and/or employees may have interests/ positions, financial or otherwise, individually or otherwise in the recommended/mentioned securities/mutual funds/ model funds and other investment products which may be added or disposed including & other mentioned in this report/message.