

**SGX NIFTY : 8917 ( 8 Pt Down )**

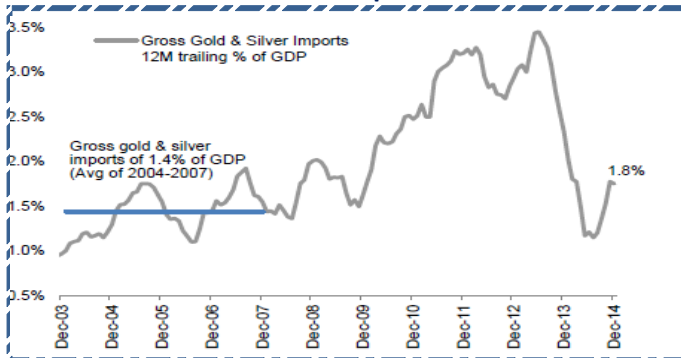
**Quote of the Day**

"The risk among any group of investors is that they only pay attention to what they already agree with. That's limiting in our opinion, and dangerous."

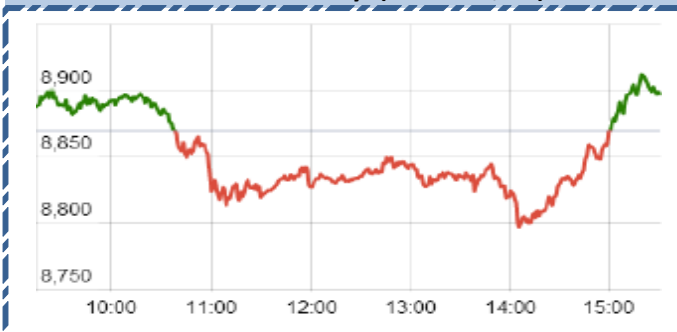
**Michael Mauboussin**

**Chart of the Day**

**Indian Gold Import Trend**



**Index Action-Nifty (19th Feb, 15)**



**Index**

Contents	Page	Coverage
News	2	UPDATE
Economic Calendar	3	UPDATE

**MARKET**

Name	Value	Change
Sensex	29462.27	142.01
Nifty	8895.3	26.20
DOW	18029.85	(17.73)
NASDAQ	4924.7	18.34
CAC	4802.01	2.98
DAX	10958.24	(2.76)
FTSE	6887.02	(10.46)
NIKKEI	18308.94	44.15
HANG SENG	Closed	
EW ALL SHARE	14890.68	42.78

**INSTITUTIONAL TURNOVER**

FII			
Investor	Buy(Cr.)	Sale(Cr.)	Net(Cr.)
19th Feb	5018.54	3,475.84	1542.70
Feb,15	60658.59	60,522.01	136.58
2015	165809.80	155,066.98	10742.82
DII			
Investor	Buy(Cr.)	Sale(Cr.)	Net(Cr.)
19th Feb	1498.50	1,694.24	(195.74)
Feb,15	24594.39	21,903.97	2690.42
2015	59908.04	65,099.39	(5191.35)

**COMMODITY PRICE**

COMMODITY/CURRENCIES	Value	
GOLD	26259.00	↑
SILVER	36427.00	↑
CRUDEOIL	52.29	↓
COPPER	359.40	↓
NATURALGAS	175.00	↑
DOLLAR/RS.	62.34	↑
EURO/RS.	70.73	↑
POUND/RS.	95.89	↑

**Narnolia Securities Ltd.**

## Markets Snapshot

### Top Price Performers

Top Performers 1D	% Change	Top Performers 1W	% Change	Top Performers 1M	% Change
JINDALSTEL	25.59	STEERINTER	65.78	NTCIND	88.09
KEMROCK	20.00	MOSERBAER	55.27	ISFT	83.21
BFINVEST	19.96	IL&FSENGG	55.00	SHREYAS	66.21
BFINVEST	19.96	KGL	53.97	SPARC	64.79
GUJNRECOKE	19.96	PETRONENGG	47.73	IL&FSENGG	57.72

### Worst Price Performers

Worst Performers 1D	% Change	Worst Performers 1W	% Change	Worst Performers 1M	% Change
YBRANTDIGI	(17.85)	ALMONDZ	(36.51)	PRITHVI	(47.19)
SCANPGEOM	(16.22)	SAMTEL	(29.73)	FARMAXIND	(43.97)
SRSREAL	(15.60)	YBRANTDIGI	(23.84)	YBRANTDIGI	(39.93)
SHREEKRPOL	(14.81)	STRAUSIND	(21.70)	STRAUSIND	(39.64)
SHRIYAMSEC	(10.60)	PRITHVI	(21.29)	SVCRES	(37.27)

### Top News :

- **NFL Mgt Guideline** : The oil ministry proposed pooling of gas prices for fertiliser plants to average out the prices of domestic gas as well as imported LNG. It could also make cost of fuel more uniform and affordable. Company believes pooling of gas will make business more attractive and the average price could be around USD 10-12 per mmbtu. Company get about 70 percent gas from domestic and 30 percent imported .

- **HEG Ltd** has informed that Government of India has imposed antidumping duty on graphite electrodes (all diameters) originating in or exported from People's Republic of China. The amount of anti-dumping duty ranges from USD 278.19 per MT to USD 922.03 per MT, depending upon the Chinese producer / exporter.

- **McNally Bharat Engineering Company Ltd** have received an order for Design, Engineering, Supply, Construction, Commissioning of a Coke Handling System of a Refinery Project for a value of Rs. 228.46 crores (approx). The order is 8.96% of sales .

- **Cipla Clarification** : News regarding "Cipla plans to acquire Pharma based companies in the US." Cipla Ltd replied stating "We wish to clarify that Company does not comment on any product or partner discussions. As a pharmaceutical company, we are constantly in discussions with multiple parties on potential collaboration opportunities - in line with our aspiration to drive access and ensure availability of high quality, affordable medicines.

- **Petron Engineering Construction Ltd** has received 'Letter of Commitment' from Fine Tech Corporation Private Limited, the Agents of Reliance Industries Limited for Mechanical Works of LLDPE and other Allied Works in J-3 Project at Reliance Industries Limited, Jamnagar, Gujarat for a total Value of Rs. 100.00 Crores.

- **Jindal Steel and Power Limited** won the Gare Palma IV/2&3 coal mine at Rs 108 per tonne each. The blocks have a total capacity of six million tonnes per annum.

- **Graphite India** said that ICRA has reaffirmed the rating of the Rs 720 crore fund based and non fund based limits availed by the company at (ICRA)AA+ for the long term and at (ICRA)A1+ for the short term . The outlook on the long term rating is stable

- **Fund action** : Titagarh Wagons : -HDFC MF A/C HDFC Prudence Fund buys 2.11 lakh shares at Rs 535.58/share . Maxwell : Reliance Capital Partners sells 15 lakh shares at Rs 49.02/share -Ohm Investment Corporation buys 5 lakh shares at Rs 49.05/share -Bengal Finance & Investment Pvt Ltd buys 8.86 lakh shares at Rs 49/share

- **U.S. Natural Gas Storage** fell to a seasonally adjusted annual rate of -111B, from -160B in the preceding month. Analysts had expected U.S. Natural Gas Storage to fall -108B last month.

- **U.S. Department of Labor** said the number of individuals filing for initial jobless benefits in the week ending February 14 decreased by 21,000 to a seasonally adjusted 283,000 from the previous week's total of 304,000. Analysts had expected initial jobless claims to fall by 11,000 to 293,000 last week.

- **European Central Bank** said that the euro zone current account recorded a seasonally adjusted surplus of €17.8 billion in December, narrowing from a surplus of €19.9 billion in November

## Result Calendar Q3FY15

Bse Coade	Company Name	Date	Bse Coade	Company Name	Date
590031	DENORA	19-Feb-15	500870	CASTROLIND	25-Feb-15
504959	STOVACQ	19-Feb-15	523888	VRWODAR	27-Feb-15
500249	KSBPUMPS	20-Feb-15	500166	GOODRICKE	28-Feb-15
500674	SANOFI	20-Feb-15	511626	RRFIN	14-Dec-15
520113	VESUVIUS	24-Feb-15			

## Economic Calendar

	Monday 16-Feb-15	Tuesday 17-Feb-15	Wednesday 18-Feb-15	Thursday 19-Feb-15	Friday 20-Feb-15
<b>US</b>		Empire State Manufacturing Index . Mortgage Delinquencies , NAHB Housing Market Index .	Building Permits , PPI m/m , Core PPI m/m , FOMC Meeting Minutes , Industrial Production m/m .	Unemployment Claims , Philly Fed Manufacturing Index , Crude Oil Inventories ,	Flash Manufacturing PMI
<b>UK/EURO ZONE</b>	Eurogroup Meetings , German Buba Monthly Report , Trade Balance .	CPI y/y , PPI Input m/m , German ZEW Economic Sentiment , ECOFIN Meetings	Average Earnings Index 3m/y , Claimant Count Change , German 10-y Bond Auction , Claimant Count Change , MPC Official Bank Rate Votes .	CBI Industrial Order Expectations , ECB Monetary Policy Meeting Accounts .	French Flash Manufacturing PMI , French Flash Services PMI , German Flash Manufacturing PMI , German Flash Services PMI , Flash Manufacturing PMI
<b>INDIA</b>	WPI				



## Narnolia Securities Ltd

124, 1st floor 7/ 1, Lords Sinha Road Kolkata 700071, Ph  
033-22821251 Toll Free no : 1-800-345-4000

email: [research@narnolia.com](mailto:research@narnolia.com),

website : [www.narnolia.com](http://www.narnolia.com)

**Risk Disclosure & Disclaimer:** This report/message is for the personal information of the authorized recipient and does not construe to be any investment, legal or taxation advice to you. Narnolia Securities Ltd. (Hereinafter referred as NSL) is not soliciting any action based upon it. This report/message is not for public distribution and has been furnished to you solely for your information and should not be reproduced or redistributed to any other person in any form. The report/message is based upon publicly available information, findings of our research wing "East wind" & information that we consider reliable, but we do not represent that it is accurate or complete and we do not provide any express or implied warranty of any kind, and also these are subject to change without notice. The recipients of this report should rely on their own investigations, should use their own judgment for taking any investment decisions keeping in mind that past performance is not necessarily a guide to future performance & that the value of any investment or income are subject to market and other risks. Further it will be safe to assume that NSL and /or its Group or associate Companies, their Directors, affiliates and/or employees may have interests/ positions, financial or otherwise, individually or otherwise in the recommended/mentioned securities/mutual funds/ model funds and other investment products which may be added or disposed including & other mentioned in this report/message.