

SGX NIFTY : 8620 ( 5 Pt Up )

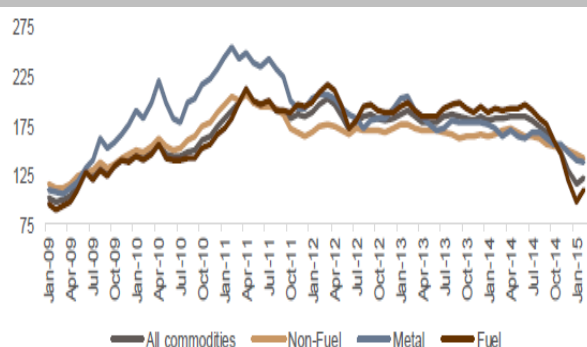
**Quote of the Day**

When purchasing depressed stock in troubled companies, seek out the ones with the superior financial positions and avoid the ones with loads of bank debt."

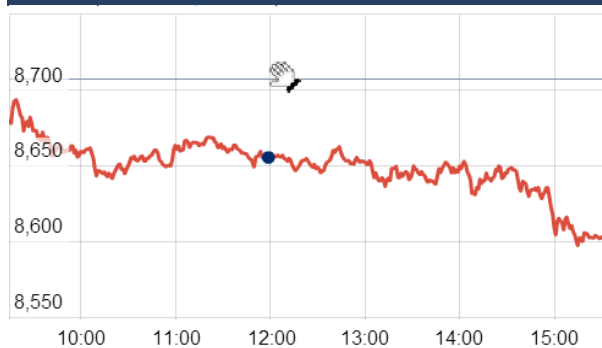
Peter Lynch

**Chart of the Day**

**Global Commodity Price Trend**



**Index Action Nifty ( 17th Apr 15 )**



**Index**

Contents	Page	Coverage
News	2	Update
Economic Calendar	4	Update
Result Calendar Q4FY15	3 to 4	Update

**Market**

Name	Value	Change
Sensex	28,442.10	(223.94)
Nifty	8606	(100.70)
DOW	17,826.30	(279.47)
NASDAQ	4,931.81	(75.89)
CAC	5,143.26	(81.23)
DAX	11,688.70	(310.10)
FTSE	6,994.63	(65.82)
NIKKEI	19,669.88	17.00
HANG SENG	27,664.81	11.69
EW ALL SHARE	14769.27	(185.14)

**Instituional Turnover**

**FII**

Investor	Buy(Cr.)	Sale(Cr.)	Net(Cr.)
17th Apr,15	4625.40	5301.11	(675.71)
Apr,15	107883.82	101659.22	1003.02
2015	311659.55	288083.01	24935.63

**DII**

Investor	Buy(Cr.)	Sale(Cr.)	Net(Cr.)
17th Apr ,15	1758.17	1685.65	72.52
Apr,15	38933.84	39022.79	932.34
2015	112720.23	118978.63	(5042.35)

**Commodity Price**

Commodity/Currencies	Value	
GOLD	26812.00	↑
SILVER	36455.00	↓
CRUDEOIL	55.90	↑
COPPER	384.00	↑
NATURALGAS	164.80	↓
DOLLAR/RS.	62.36	↑
EURO/RS.	67.58	↑
POUND/RS.	93.55	↑

## Market Snapshot

### Top Price Performers

Top Performers 1D	% Change	Top Performers 1W	% Change	Top Performers 1M	% Change
PRAKASHCON	19.76	PRAKASHCON	54.69	AANJANEYA	109.09
MUDRA	18.92	AANJANEYA	45.77	ESSDEE	102.45
DEEPIND	18.70	JETKINGQ	45.19	TRICOM	89.91
SELAN	13.76	LPDC	38.98	ZENOTECH	82.56
AADHAARVEN	13.33	BALAMINES	38.46	PARABDRUGS	81.48

### Worst Price Performers

Worst Performers 1D	% Change	Worst Performers 1W	% Change	Worst Performers 1M	% Change
PRADIP	(11.22)	VISASTEEL	(23.92)	GLODYNE	(50.94)
CALSREF	(11.11)	ARVINDREM	(22.47)	PRITI	(46.84)
RESTILE	(10.34)	MAVENS BIO	(20.69)	KGNENT	(39.99)
JRG	(10.21)	INNOIND	(18.49)	SHLAKSHMI	(36.04)
SOFTSOL	(9.91)	SHLAKSHMI	(18.00)	SAMTEL	(32.63)

## Top News

- **DCB Mgt Guideline** : Bank aims to double its balance sheet over the next three-and-a-half years . Bank saw a diversified portfolio growth in FY15, with retail, agriculture and inclusive banking reporting a healthy performance. Bank expects net interest margins to be in the range of 3.4-3.5 percent in the current half of this fiscal. NIM for FY15 as a whole was 3.72 percent. The banks slippages in FY15 was Rs 105-110 crore, excluding the shipyard account of Rs 65 crore. Bank expects non performing assets and slippages to be stable this fiscal.

- **Mindtree Mgt Guideline** : The company plans to acquire businesses in this space . The growth outlook for FY16 remained strong, and the effect would show in the second half earnings. However, margins could be lower compared to last year .

- **NHPC Ltd** has informed that Ministry of Environment, Forests & Climate Change vide its letter dated April 15, 2015 has accorded in-principle approval for diversion of 4577.84 ha of forest land in favour of M/s NHPC Limited for construction of Dibang Multipurpose Project (3000 MW) on Dibang River in Lower Dibang valley district of Arunachal Prade .

- **Fund Action** : Pacific Investors Services Private Limited sold 44,24,312 shares of Sanghi Industries at Rs 57.15 on the BSE.

Singapore state investment arm Temasek will invest 9.45 billion rupees (\$151.39 million) in Glenmark Pharmaceuticals Ltd

- **Ashoka Buildcon** said its board has decided to close the QIP issue, which opened on April 13, with immediate effect. The company said that the QIP committee of the board in its meeting today decided to "close the issue with immediate effect .

- **Skipper Ltd** has expanded its area of operation in Western Market of the Country with 10,000 Mt. capacity in Ahmedabad (Gujarat) and it has plan to make further expansion to achieve the installed capacity level of 100000 Mt per annum within a span of 3 years.

- **Bharat Petroleum Corporation Ltd** consortium establishes good productivity of reservoirs of Farfan discovery area in the Sergipe Basin, Brazil in a new appraisal well .

- **Essar Ports** has signed a pact with Kandla Port Trust for setting up a terminal for storing imported fuel at Vadinar in Gujarat.

- **NTPC** agreed to pay Rs 20 lakh as compensation to land owners ending a 11-year deadlock .

- **Piramal Enterprises** has agreed to acquire a majority stake in Health SuperHiway Private Limited, a healthcare analytics company, over the next 12 months.

- **CRISIL Ltd** has informed that 37,543 (Thirty Seven Thousand Five Hundred and Forty Three) equity shares of CRISIL Limited of face value Re. 1 each to the employees pursuant to their exercising the stock options granted to them under the Employees Stock Option Scheme - 2011 (ESOS - 2011) of the Company at an exercise price of Rs. 579.88 per share .

- **India imported** goods worth USD 35.74 billion in March (up from USD 28.39 billion in February) while exporting worth USD 23.95 billion (versus USD 21.55 billion), bringing the monthly trade deficit at USD 11.79 billion (up from USD 6.8 billion) . The increase in the trade deficit was largely due to a jump in gold imports, from USD 4.95 billion versus USD 1.98 billion. The rise in gold imports can be attributed to the recent government easing of the 80:20 import restriction scheme

- **Euro zone deputy finance ministers** will meet midweek ahead of a Eurogroup finance ministers' gathering two days later, a Greek government official told as Athens and its creditors continue to seek a deal on reforms to unlock aid.

- **Japan's Economy Minister** Akira Amari and U.S. Trade Representative Michael Froman made the comments after they kicked off two days of negotiations that could pave the way for a broader trans-Pacific trade deal.

- **The People's Bank of China (PBOC)** lowered the reserve requirement ratio (RRR) for all banks by 100 basis points to 18.5 percent, effective from April 20, the central bank said in a statement on its website [www.pbc.gov.cn](http://www.pbc.gov.cn).

### Result Calendar Q4FY15

BSE Code	Company Name	Date	BSE Code	Company Name	Date
524606	BERLDRG	20-Apr-15	500150	FOSECOIND	24-Apr-15
531582	BERYLSE	20-Apr-15	500189	HINDUJAVEN	24-Apr-15
500188	HINDZINC	20-Apr-15	530055	HRMNYCP	24-Apr-15
507522	MOUNTSHIQ-\$	20-Apr-15	532960	IBVENTURES	24-Apr-15
539015	ORTEL	20-Apr-15	500209	INFY	24-Apr-15
533179	PERSISTENT	20-Apr-15	500162	PARRYSUGAR	24-Apr-15
532370	RAMCOSYS	20-Apr-15	513519	PITTILAM-\$	24-Apr-15
513010	TATASPONGE	20-Apr-15	512529	SEQUENT	24-Apr-15
526921	21STCENMGM	21-Apr-15	500550	SIEMENS	24-Apr-15
500089	DICIND	21-Apr-15	513262	SSWL	24-Apr-15
532281	HCLTECH	21-Apr-15	509930	SUPREMEIND	24-Apr-15
511000	MADHUSE	21-Apr-15	512595	UNIMOVR	24-Apr-15
517385	SYMPHONY	21-Apr-15	513729	AROGRANITE-\$	25-Apr-15
504961	TATAYODOGA-\$	21-Apr-15	538713	ATISHAY	25-Apr-15
509966	VSTIND	21-Apr-15	532522	PETRONET	25-Apr-15
505412	WENDT	21-Apr-15	531169	SKPSEC	25-Apr-15
507685	WIPRO	21-Apr-15	532538	ULTRACEMCO	25-Apr-15
520119	ASAL	22-Apr-15	531221	MAYURFL	26-Apr-15
506390	CLNINDIA	22-Apr-15	533573	APLLTD	27-Apr-15
532913	CSIL	22-Apr-15	531340	BERVINL	27-Apr-15
508906	EVERESTIND	22-Apr-15	506894	CHEMFALKAL	27-Apr-15
500249	KSBPUMPS	22-Apr-15	507886	DHRUVES	27-Apr-15
523704	MASTEK	22-Apr-15	523754	EPCIN	27-Apr-15
500355	RALLIS	22-Apr-15	532482	GRANULES	27-Apr-15
517320	SAVINFOCO	22-Apr-15	509675	HIL	27-Apr-15
500405	SUPPETRO	22-Apr-15	532174	ICICIBANK	27-Apr-15
532648	YESBANK	22-Apr-15	534816	INFRATEL	27-Apr-15
532840	ADVANTA	23-Apr-15	538835	INTELLECT	27-Apr-15
502761	BLUBLND-B	23-Apr-15	500241	KIRLOSBROS	27-Apr-15
532792	CAIRN	23-Apr-15	532896	MAGNUM	27-Apr-15
532443	CERA	23-Apr-15	532500	MARUTI	27-Apr-15
532175	CYIENT	23-Apr-15	512115	ROSEMER	27-Apr-15
523477	GUJRATGAS	23-Apr-15	500407	SWARAJENG	27-Apr-15
500179	HCL-INSYS	23-Apr-15	512070	UPL	27-Apr-15
500180	HDFCBANK	23-Apr-15	530197	BAGADIA	28-Apr-15
502330	IPAPPM	23-Apr-15	532454	BHARTIARTL	28-Apr-15
533519	L&TTFH	23-Apr-15	532548	CENTURYPLY	28-Apr-15
523457	LINDEINDIA	23-Apr-15	533167	COROENGG	28-Apr-15
532720	M&MFIN	23-Apr-15	500135	ESSELPRO	28-Apr-15
500290	MRF	23-Apr-15	532345	GATI	28-Apr-15
532200	MYSOREBANK	23-Apr-15	532424	GODREJCP	28-Apr-15
532735	RSYSTEMINT*	23-Apr-15	532822	IDEA	28-Apr-15
532663	SASKEN	23-Apr-15	532771	JHS	28-Apr-15
500472	SKFINDIA	23-Apr-15	500245	KIRLFER	28-Apr-15
533121	SQSBFSI	23-Apr-15	532400	KPIT	28-Apr-15
506597	AMAL	24-Apr-15	538503	MARICOKAYEL	28-Apr-15
511243	CHOLAFIN	24-Apr-15	532504	NAVINFLUOR	28-Apr-15
505790	FAGBEARING	24-Apr-15	504112	NELCO	28-Apr-15

532498	SHRIRAMCIT	28-Apr-15	532638	SHOPERSTOP	30-Apr-15
538635	SNOWMAN	28-Apr-15	511218	SRTRANSFIN	30-Apr-15
517166	SPELS	28-Apr-15	531652	THIRDFIN	30-Apr-15
500408	TATAELXI	28-Apr-15	523868	UBEINDL	30-Apr-15
500425	AMBUJACEM	29-Apr-15	513375	CARBORUNIV	1-May-15
532523	BIOCON	29-Apr-15	523708	EIMCOELECO	1-May-15
511072	DHFL	29-Apr-15	505700	ELECON	1-May-15
500469	FEDERALBNK	29-Apr-15	533088	MHRIL	1-May-15
530141	GYANDEV	29-Apr-15	523756	SREINFRA	1-May-15
500010	HDFC	29-Apr-15	513709	SHILGRAVQ-₹	2-May-15
532129	HEXAWARE	29-Apr-15	516030	YASHPPR-₹	2-May-15
500233	KAJARIACER	29-Apr-15	522134	ARTSONEN	4-May-15
534690	LAKSHVILAS	29-Apr-15	531768	POLYMED	4-May-15
531324	ROSELABS	29-Apr-15	533228	SKSMICRO	4-May-15
532983	RPLIFE	29-Apr-15	532953	VGUARD	4-May-15
500674	SANOFI	29-Apr-15	505665	ABCBEARS-₹	5-May-15
500387	SHREECEM	29-Apr-15	500040	CENTURYTEX	5-May-15
505827	SNL	29-Apr-15	500096	DABUR	5-May-15
531359	SRAMSET	29-Apr-15	526821	DAICHI-₹	5-May-15
500295	SSLT	29-Apr-15	511208	IVC	5-May-15
501242	TCIFINANCE	29-Apr-15	500247	KOTAKBANK	5-May-15
504966	TINPLATE	29-Apr-15	521018	MARALOVER	5-May-15
532343	TVSMOTOR	29-Apr-15	511676	GICHSGFIN	6-May-15
531147	ALICON	30-Apr-15	521234	SRINACHA-₹	6-May-15
526125	ARHNTTO	30-Apr-15	531581	ALKADIA	7-May-15
532493	ASTRAMICRO	30-Apr-15	500620	GESHIP	7-May-15
500027	ATUL	30-Apr-15	534328	HEXATRADEX	7-May-15
531994	AUTOPINS	30-Apr-15	500378	JINDALSAW	7-May-15
532215	AXISBANK	30-Apr-15	500307	NIRLON	7-May-15
531203	BRANDREAL	30-Apr-15	531209	NUCLEUS	7-May-15
500085	CHAMBLFERT	30-Apr-15	504959	STOVACQ	7-May-15
506395	COROMANDEL	30-Apr-15	500114	TITAN	7-May-15
531155	EPSOMPRO	30-Apr-15	520113	VESUVIUS	7-May-15
509567	GOACARBON-₹	30-Apr-15	526269	CRSTCHM	8-May-15
533150	GODREJPROP	30-Apr-15	507815	GILLETTE	8-May-15
500185	HCC	30-Apr-15	500165	KANSAINER	8-May-15
532659	IDFC	30-Apr-15	524000	MAGMA	8-May-15
512329	JARITEX	30-Apr-15	524558	NEULANDLAB	8-May-15
531692	KHYATI	30-Apr-15	500459	PGHH	8-May-15
513605	LANCO INDUST	30-Apr-15	520056	SUNCLAYLTD	8-May-15
500250	LGBBROSLTD	30-Apr-15	523411	ADCINDIA	11-May-15
533007	LGBFORGE	30-Apr-15	530889	ALKA	11-May-15
532313	MAHLIFE	30-Apr-15	532047	ASIANFILMS	11-May-15
530243	MANGASOF	30-Apr-15	532756	MAHINDCIE	11-May-15
500730	NOCIL	30-Apr-15	500877	APOLLOTYRE	12-May-15
532481	NOIDATOLL	30-Apr-15	500477	ASHOKLEY	12-May-15
500313	OILCOUNTUB	30-Apr-15	534804	CARERATING	12-May-15
521080	PASARI	30-Apr-15	500124	DRREDDY	12-May-15
532254	POLARIS	30-Apr-15	503772	MODWOOL	12-May-15
509423	SEL	30-Apr-15	517334	MOTHERSUMI	12-May-15

534369	TBZ	12-May-15	512153	SPECMKT	27-May-15
500266	MAHSCOOTER	13-May-15	506655	SUDARSCHM	27-May-15
514142	TTL-₹	13-May-15	509038	VOLLF	27-May-15
523736	DPL	14-May-15	500008	AMARAJABAT	28-May-15
517044	IDM	14-May-15	508939	BLCISER	28-May-15
506767	ALKYLAMINE	15-May-15	506405	DHARAMSI	28-May-15
500420	TORNTPHARM	15-May-15	530779	DYNAMICP	28-May-15
534742	ZUARI	15-May-15	511092	JMDTELEFILM	28-May-15
500780	ZUARIGLOB	15-May-15	506113	LIFELINE	28-May-15
532133	IFGLREFRAC	16-May-15	530557	NCLRESE	28-May-15
526721	NICCOPAR-₹	16-May-15	505250	GGDANDE	29-May-15
532527	RKFORGE	16-May-15	500202	INDLEASE	29-May-15
532410	TRANSCOR	18-May-15	523323	KOVAI	29-May-15
590043	HARITASEAT-₹	19-May-15	500520	M&M	29-May-15
532978	BAJAFINSV	20-May-15	501343	MOTOGENFIN	29-May-15
500034	BAJFINANCE	20-May-15	532777	NAUKRI	29-May-15
532977	BAJAJ-AUTO	21-May-15	531049	NEELKAN	29-May-15
500490	BAJAJHLDNG	21-May-15	535514	PRIMECAPM	29-May-15
500414	TIMEX-₹	21-May-15	532915	RELIGARE	29-May-15
532156	VAIBHAVGBL	21-May-15	508963	STRLGUA	29-May-15
500452	NEPCAGRO	22-May-15	521226	UNIROYAL	29-May-15
531077	NEPCPAPER	22-May-15	531831	UNISH	29-May-15
521192	NEPCTEX	22-May-15	526941	VAICC	29-May-15
522113	TIMKEN	22-May-15	511690	WARNER	29-May-15
532644	JKCEMENT	23-May-15	512587	ZODJRD MKJ	29-May-15
535789	IBULHSGFIN	24-May-15	531223	ANJANI-₹	30-May-15
530835	ELTROL	25-May-15	532352	KIRLMU	30-May-15
531528	MAARSOFTW	25-May-15	532537	LUMAXAUTO	30-May-15
531319	MARUTISE	25-May-15	526251	MIDEASTP	30-May-15
532349	TCI	25-May-15	526891	MKTCREAT	30-May-15
500133	ESABINDIA	26-May-15	521246	PARASPETRO	30-May-15
526558	JAMEHOT	26-May-15	531931	SAICAPI	30-May-15
512618	RLF	26-May-15	530905	SAINBUS	30-May-15
500164	GODREJIND	27-May-15	530125	SAMRATPH-₹	30-May-15
500301	NEPCMICON	27-May-15	524703	SANDUPHQ	30-May-15
523236	SHRENUJ	27-May-15	524103	LINEARPO	31-May-15
			511626	RRFIN	14-Dec-15

## Result Q4FY15

NSE CODE	BSE CODE	SALES Rs (cr.)	SALES YOY	PAT Rs Cr	PAT YOY
TCS	532540	24220	12.4	5906	10.2
Mindtree	532819	903.6	9.7	126.7	28.76
GRUH	511288	304	29.3	74.05	0.61
CRISIL	500092	307.24	-0.6	56.68	-17.5
RSSOFTWARE	517447	83.28	-10.6	15.49	-3.2
ATFL	500215	187.54	-0.6	14.58	12.07
RELIANCE	500325	67470	-34.8	6381	8.5

Country	Monday 20 April 15	Tuesday 21 April 15	Wednesday 22 April 15	Thursday 23 April 15	Friday 24 April 15
US	CB Leading Index m/m .		Existing Home Sales , Crude Oil Inventories .	Unemployment Claims , New Home Sales , Natural Gas Storage .	Core Durable Goods Orders m/m ,Durable Goods Orders m/m , Revised UoM Consumer Sentiment .
UK/EURO ZONE	French Flash Manufacturing PMI ,French Flash Services PMI , German Flash Manufacturing PMI , German Flash Services PMI , Flash Manufacturing PMI , Flash Services PMI .	CPI y/y , German ZEW Economic Sentiment , ZEW Economic Sentiment , PPI Input m/m , RPI y/y .	MPC Official Bank Rate Votes , MPC Asset Purchase Facility Votes .	Spanish Unemployment Rate , German Ifo Business Climate , Retail Sales m/m .	Belgian NBB Business Climate .
INDIA					

**Risk Disclosure & Disclaimer :** This report/message is for the personal information of the authorized recipient and does not construe to be any investment, legal or taxation advice to you. Narnolia Securities Ltd. (Hereinafter referred as NSL) is not soliciting any action based upon it. This report/message is not for public distribution and has been furnished to you solely for your information and should not be reproduced or redistributed to any other person in any form. The report/message is based upon publicly available information, findings of our research wing "East wind" & information that we consider reliable, but we do not represent that it is accurate or complete and we do not provide any express or implied warranty of any kind, and also these are subject to change without notice. The recipients of this report should rely on their own investigations, should use their own judgment for taking any investment decisions keeping in mind that past performance is not necessarily a guide to future performance & that the the value of any investment or income are subject to market and other risks. Further it will be safe to assume that NSL and /or its Group or associate Companies, their Directors, affiliates and/or employees may have interests/positions, financial or otherwise, individually or otherwise in the recommended/mentioned securities/mutual funds/ model funds and other investment products which may be added or disposed including & other mentioned in this report/message. NSL or any of its affiliates or employees shall not be in any way responsible for any loss or damage that may arise to any person from any action taken based on the above information or inadvertent error in the information contained in this report/message

## Narnolia Securities Ltd.

<p><b>Narnolia Research Lab</b> Stellar IT Park   5th Floor   Office Space No. 6   Tower-I/nd Plot No. C-25   Sector-62   Noida   Ph : 0120-4215110</p>	<p><b>Central Strategy Desk - Kolkata</b> 124   1st Floor   7/1 Lords Sinha Road   Kolkata - 71 Ph : 033-22821500   M : 93347 14418, 98302 69810</p>
---	--